

**WARNING:**  
**BEFORE USING THIS FIREARM,**  
**READ THROUGH THESE WARNINGS**  
**AND INSTRUCTIONS CAREFULLY**  
**AND THOROUGHLY.**

**THIS MANUAL SHOULD ALWAYS ACCOMPANY**  
**THIS PISTOL AND BE TRANSFERRED WITH IT**  
**UPON CHANGES OF OWNER OR USER.**

**GI Expert™ – Para 1911**  
**SAFETY AND**  
**INSTRUCTION**  
**MANUAL**

***Para***  
**USA™**

©2004-09 Para USA, Inc.

THIS MANUAL APPLIES TO PARA USA  
GI EXPERT™ – PARA 1911 PISTOLS  
WITH 5-INCH BARRELS

**FIREARMS ARE CLASSIFIED AS DANGEROUS  
WEAPONS. THEREFORE THIS PRODUCT IS  
POTENTIALLY LETHAL.**

**FAILURE TO READ, UNDERSTAND AND FOLLOW  
ANY OF THESE WARNINGS AND INSTRUCTIONS MAY  
RESULT IN INJURY, DEATH OR  
DAMAGE OF PROPERTY.**



### **WARNING**

CHILDREN ARE ATTRACTED TO AND CAN OPERATE FIREARMS THAT CAN CAUSE SEVERE INJURIES OR DEATH. PREVENT CHILD ACCESS BY ALWAYS KEEPING GUNS LOCKED AWAY AND UNLOADED WHEN NOT IN USE. IF YOU KEEP A LOADED FIREARM WHERE A CHILD OBTAINS AND IMPROPERLY USES IT, YOU MAY BE FINED OR SENT TO PRISON.



### **ADVERTENCIA**

A LOS NIÑOS LOS ATRAEN LAS ARMAS DE FUEGO Y LAS PUEDEN HACER FUNCIONAR ELLOS PUEDEN CAUSARSE LESIONES GRAVES Y LA MUERTE. EVITE QUE LOS NIÑOS TENGAN ACCESO A LAS ARMAS DE FUEGO GUARDANDOLAS SIEMPRE CON LLAVE Y DESCARGADAS CUANDO NO LAS ESTE UTILIZANDO, SI USTED TIENE UNA ARMA DE FUEGO CARGADA EN UN LUGAR EN QUE UN NIÑO TIENE ACCESO A ELLA Y LA USA INDEBIDAMENTE, LE PUEDEN DAR UNA MULTA O ENVIARLO A LA CARCEL.

**WARNING: DO NOT MAKE ANY ATTEMPTS TO PRACTICE LOADING, UNLOADING, ETC. WITH LIVE AMMUNITION UNLESS YOU HAVE FULLY UNDERSTOOD THIS MANUAL AND ARE CERTAIN ABOUT THE PROPER HANDLING AND OPERATION OF THIS PRODUCT.**

**WHERE IN DOUBT ABOUT YOUR ABILITY TO HANDLE OR USE THIS HANDGUN SAFELY, SEEK SUPERVISED INSTRUCTION RUN BY A LOCAL GUN CLUB, GUN DEALER, OR POLICE DEPARTMENT.**

## **FIREARMS SAFETY – ACCIDENT PREVENTION**

### **YOUR RESPONSIBILITY**

**WHEN PRESSING THE TRIGGER, YOU MUST  
EXPECT THE GUN TO FIRE AND YOU MUST  
TAKE FULL RESPONSIBILITY FOR FIRING IT**

**ALWAYS TREAT A FIREARM  
AS IF IT WERE LOADED**

**THE BASIC PRINCIPLES OF HANDLING AND  
OPERATION OF THIS FIREARM MUST BE FULLY  
UNDERSTOOD AND FOLLOWED EXACTLY.  
THIS MANUAL IS PROVIDED TO ASSIST YOU  
IN THE PROPER USE AND MAINTENANCE OF  
YOUR PARA USA PISTOL. IF YOU HAVE ANY  
FURTHER QUESTIONS, PLEASE CONTACT  
US DIRECTLY.**

MANUALS ARE AVAILABLE  
**FREE** FROM THE FACTORY:

# **Para USA™**

10620 SOUTHERN LOOP BLVD.  
CHARLOTTE, NC 28134-7381

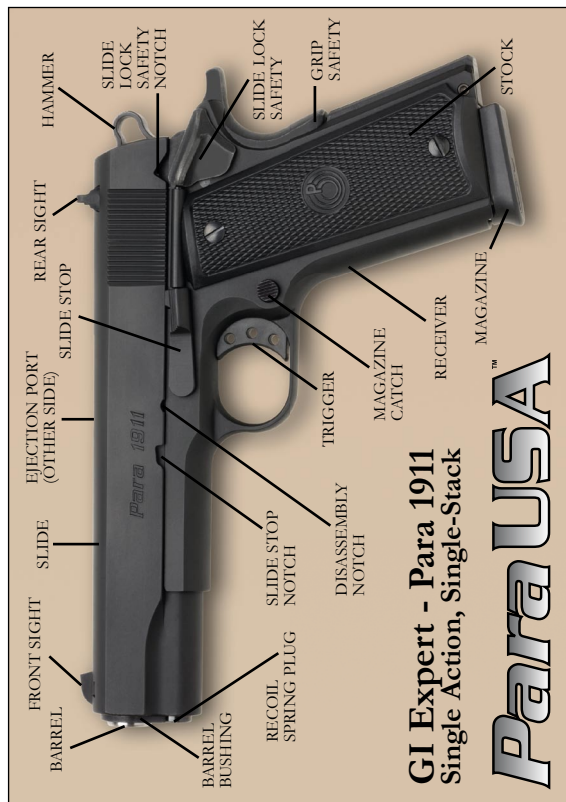
(954) 202-4440

[www.para-usa.com](http://www.para-usa.com)

## CONTENTS

	Page
<b>MAIN FEATURES</b> .....	1
<b>FIREARM SAFETY INSTRUCTIONS</b> .....	3
<b>FEATURES</b>	
<b>PARA 1911 GI EXPERT SPECIFICATIONS</b> .....	8
<b>SAFETY FEATURES</b>	
SLIDE LOCK SAFETY .....	9
GRIP SAFETY .....	11
PASSIVE SAFETIES.....	12
<b>FUNCTION</b>	
<b>PROPER LUBRICATION AND BREAK-IN PERIOD</b> .....	13
<b>MALFUNCTIONS</b> .....	17
<b>LOADING</b> .....	18
<b>UNLOADING</b> .....	23
<b>FIRING</b> .....	24
<b>GRIP</b> .....	25
<b>MAINTENANCE</b>	
DISASSEMBLY .....	28
REASSEMBLY .....	32
CLEANING PISTOL .....	36
CLEANING MAGAZINES.....	37
TRANSPORTATION & STORAGE .....	38
<b>WARRANTY INFORMATION</b> .....	38
<b>SERVICE AND REPAIR</b> .....	39
<b>LIMITS OF LIABILITY</b> .....	40
<b>SPARE PARTS</b> .....	41
<b>PARTS ILLUSTRATIONS</b> .....	42
<b>PARTS LISTS</b> .....	43

## MAIN FEATURES: GI Expert™ – Para 1911 Pistol



## MAIN FEATURES: GI Expert™ – Para 1911 Pistol



2

## FIREARMS SAFETY INSTRUCTIONS

DO NOT USE ANY FIREARM WITHOUT HAVING A FULL AND COMPLETE UNDERSTANDING OF ITS PARTICULAR MECHANICAL AND HANDLING CHARACTERISTICS.

**FOR YOUR SAFETY AND THE SAFETY OF OTHERS YOU MUST ENSURE YOUR COMPLETE AND CLEAR UNDERSTANDING OF THIS MANUAL AND YOU MUST FOLLOW ITS SAFETY INSTRUCTIONS EXACTLY.**

NEVER ALLOW ANYONE TO USE THIS FIREARM WITHOUT HAVING THAT PERSON READ THIS MANUAL FIRST.

**IMPROPER HANDLING OF YOUR PISTOL CAN RESULT IN INJURY, DEATH OR PROPERTY DAMAGE.**

### CAUTIONS:

1. ALWAYS TREAT EVERY FIREARM AS IF IT WERE LOADED.
2. NEVER – EVER – POINT ANY GUN, LOADED OR UNLOADED, AT ANYTHING YOU DO NOT INTEND TO SHOOT.
3. ALWAYS KEEP YOUR FINGER AWAY FROM THE TRIGGER, OUTSIDE THE TRIGGER GUARD, UNTIL YOU ARE AIMING AT A TARGET AND READY TO SHOOT.

3

4. ALWAYS BE SURE OF YOUR BACKSTOP, WHAT LIES BEYOND YOUR TARGET, AND THE SAFETY OF BYSTANDERS BEFORE YOU CONSIDER SHOOTING YOUR PISTOL. THE BACKSTOP MUST BE ADEQUATE TO STOP AND CONTAIN BULLETS. OTHERWISE, A BULLET IS CAPABLE OF TRAVELING THROUGH OR PAST YOUR TARGET FOR A DISTANCE OF UP TO 1 1/2 MILES. DO NOT SHOOT IF YOU ARE UNCERTAIN ABOUT WHAT LIES BEYOND YOUR TARGET.
5. ALWAYS MAKE SURE YOUR PISTOL IS UNLOADED AND THE SLIDE IS LATCHED OPEN BEFORE HANDING IT TO ANOTHER PERSON OR LAYING IT DOWN.
6. ALWAYS MAKE SURE THAT YOUR PISTOL HAS NOT BEEN IN ANY WAY DAMAGED AS THE RESULT OF IT HAVING BEEN DROPPED OR ANY OTHER INCIDENT OR CIRCUMSTANCE, INCLUDING CORROSION, THAT MAY HAVE POSSIBLY CAUSED DAMAGE TO SOME PARTS OF THE MECHANISM.
7. ALWAYS HAVE A COMPETENT GUNSMITH INSPECT YOUR PISTOL SO AS TO ENSURE ITS PROPER FUNCTION. REMEMBER, ONLY WEAPONS IN PERFECT WORKING ORDER CAN BE SAFE WEAPONS.
8. NEVER LEAVE A PISTOL COCKED AND READY TO FIRE.

**ALWAYS USE YOUR HANDGUN SAFELY AND WISELY. PROTECT YOURSELF AND THOSE AROUND YOU BY TAKING THE PROPER AND NECESSARY PRECAUTIONS PRIOR TO FIRING YOUR PISTOL. REMEMBER, UNSAFE PRACTICES CAN BE THE CAUSE OF INJURY, DEATH, OR PROPERTY DAMAGE.**

9. NEVER LEAVE A LOADED PISTOL UNATTENDED.
10. ALWAYS MAKE SURE THAT ANY OTHER SHOOTERS OR BYSTANDERS ARE WELL CLEAR OF YOU WHEN PREPARING TO SHOOT YOUR PISTOL. EJECTED CARTRIDGES CAN CAUSE INJURY TO ANYONE STANDING IN THEIR PATH. NEVER OBSTRUCT THE EJECTION PORT ON YOUR PISTOL BY PLACING YOUR FINGERS IN FRONT OF IT.
11. ALWAYS WEAR ADEQUATE SHOOTING GLASSES AND ENCOURAGE OTHERS TO DO THE SAME. UNPROTECTED EYES MAY BE INJURED BY POWDER GAS, CARBON RESIDUE, LUBRICANT, METALLIC PARTICLES OR SIMILAR DEBRIS THAT CAN DAMAGE EYES AND EVEN CAUSE BLINDNESS.
12. ALWAYS WEAR ADEQUATE EAR PROTECTION AND MAKE SURE THAT OTHERS IN YOUR VICINITY DO THE SAME. REPEATED EXPOSURE TO SHOOTING NOISE CAN LEAD TO CUMULATIVE, PERMANENT HEARING LOSS.
13. ALWAYS CARRY YOUR PISTOL EMPTY WITH THE SLIDE LATCHED OPEN UNTIL PREPARING TO FIRE.

**ALWAYS EMPLOY SAFE HANDLING, LOADING, AND SHOOTING METHODS. REMEMBER A LOADED FIREARM HAS THE POTENTIAL TO KILL. INTELLIGENTLY HANDLED IT CAN BE USED SAFELY.**

14. NEVER CONSUME ALCOHOL OR TAKE DRUGS PRIOR TO SHOOTING. IF UNDER MEDICATION, SEEK A DOCTOR'S ADVICE TO BE SURE THAT YOU ARE FIT AND ABLE TO HANDLE A GUN SAFELY.

15. NEVER SHOOT AT A FLAT SURFACE OF WATER OR AT ANY HARD SURFACE IN ORDER TO AVOID HAZARDOUS RICOCHETS THAT CAN CAUSE INJURY, DEATH, OR PROPERTY DAMAGE.

**ALWAYS USE AMMUNITION THAT COMPLIES WITH THE INDUSTRY PERFORMANCE STANDARD AS ESTABLISHED BY THE SPORTING ARMS AND AMMUNITION MANUFACTURER'S INSTITUTE (SAAMI). TO DO OTHERWISE MAY RESULT IN INJURY, DEATH, OR DAMAGE TO PROPERTY.**

16. ALWAYS MAKE SURE THE MUZZLE IS POINTED IN A SAFE DIRECTION.
17. NEVER LOAD YOUR PISTOL UNTIL YOU ARE PROPERLY READY TO USE IT. UNLOAD IT THE MINUTE YOU HAVE COMPLETED SHOOTING.
18. ALWAYS EXAMINE THE BARREL BORE TO BE CERTAIN IT IS CLEAR AND FREE OF ANY OBSTRUCTIONS. ANY OBSTRUCTION, WHETHER IT BE FROM DIRT, CORROSION OR OTHER DEBRIS, EVEN A HEAVY COATING OF OIL OR DROPS OF WATER, MAY RESULT IN DAMAGE TO THE PISTOL THAT CAN CAUSE INJURY, DEATH, OR PROPERTY DAMAGE.
19. ALWAYS USE ONLY CLEAN, DRY, ORIGINAL HIGH QUALITY FACTORY-MADE AMMUNITION THAT IS IN GOOD CONDITION AND OF THE PROPER TYPE AND CALIBER FOR YOUR GUN. IMPROPERLY LOADED AMMUNITION CAN PROVE TO BE EXTREMELY DANGEROUS WHEN CARTRIDGES HAVE BEEN LOADED OUTSIDE THE EXACTING SAFETY LIMITS BUILT INTO YOUR PISTOL.

20. USE OF EXTRA HIGH-PRESSURE AMMUNITION MAY CAUSE RELIABILITY PROBLEMS. AS WITH ANY HANDGUN, PROLONGED USE OF EXTRA HIGH PRESSURE AMMUNITION MAY SHORTEN THE SERVICE LIFE OF THE PISTOL.
21. ALWAYS HAVE THE SAFETY ON UNTIL YOU INTEND TO FIRE.
22. NEVER WALK OR CLIMB WITH A LOADED FIREARM. PISTOLS HAVE SHORT BARRELS AND THEREFORE EXTREME CARE SHOULD BE TAKEN WHEN HANDLING THEM BECAUSE THEIR ATTITUDE AND DIRECTION CAN BE EASILY CHANGED. HOLD YOUR PISTOL SO THAT THE MUZZLE IS CONTROLLABLE.

**ALWAYS STORE GUNS AND AMMUNITION SEPARATELY, LOCKED IF POSSIBLE, OUT OF SIGHT, AND BEYOND THE REACH OF CHILDREN AND INEXPERIENCED OR CARELESS ADULTS.**

23. ALWAYS MAKE SURE THAT YOUR PISTOL IS NOT LOADED BEFORE CLEANING AND STORING IT.
23. NEVER DRY FIRE YOUR PISTOL WHEN YOU HAVE REMOVED THE SLIDE FROM THE RECEIVER.

**LEAD WARNING:**

**DISCHARGING FIREARMS IN POORLY VENTILATED AREAS, CLEANING FIREARMS, OR HANDLING AMMUNITION MAY RESULT IN EXPOSURE TO LEAD AND OTHER SUBSTANCES KNOWN TO CAUSE BIRTH DEFECTS, REPRODUCTIVE HARM, AND OTHER SERIOUS INJURY. HAVE ADEQUATE VENTILATION AT ALL TIMES. WASH HANDS THOROUGHLY AFTER EXPOSURE.**

## PARA GI EXPERT - PARA 1911 SPECIFICATIONS

**Model Name:** GI Expert™

**Caliber:** .45 ACP

**Barrel:** 5 inches, stainless steel

**Twist:** 1 in 16 inches, left-hand

**Action:** Single-action, Semi-automatic

**Sights:** Dovetail Fixed, 3-White Dot

**Receiver:** Carbon Steel

**Trigger:** Medium length

**Hammer:** Skeletonized Spur

**Magazine:** 8-round with removable base pad

**Overall Length:** 8.5 inches

**Height:** 5.75 inches

**Weight:** 39 ounces

**Finish:** Covert Black Para Kote™

**Stocks:** Checkered Polymer

**Safeties:** Slide Lock, Internal Firing Block, Grip

**Additional Features:** Lowered and flared ejection port, beveled magazine well, flat mainspring housing, grip safety contoured for spur hammer

**Product Code:** GI45

## SAFETY FEATURES

The Para 1911 GI Expert single-action, semi-automatic pistol is equipped with a number of safety devices (some are hand-operated while others are passive) that are designed to minimize accidental discharges.

**NEVER RELY ON A SAFETY MECHANISM TO JUSTIFY CARELESS HANDLING OR POOR MAINTENANCE. ALWAYS POINT YOUR PISTOL IN A SAFE DIRECTION.**

### HAND-OPERATED SAFETIES

These safeties are activated manually.

### SLIDE LOCK SAFETY

This safety device can only be activated when the hammer is fully cocked with slide fully forward (**Figure 1**).



**Figure 1**

**NEVER LEAVE YOUR PISTOL COCKED  
AND READY TO FIRE.  
THIS IS AN EXTREMELY DANGEROUS  
CONDITION WHICH CAN LEAD TO AN  
ACCIDENTAL DISCHARGE THAT MAY CAUSE  
INJURY, DEATH, OR PROPERTY DAMAGE.**

To engage the Slide Lock Safety you must, while pointing the pistol in a safe direction with your finger away from the trigger, pull the slide to its most rearward position and then let it return all the way forward, freely and with all its force. This will leave the hammer fully cocked. Then push the Slide Lock Safety up until it fully engages the Slide Lock Notch (**Figure 2**). At this point, the slide is prevented from moving rearward and an internal cam surface engages the sear to prevent the hammer from moving forward if the trigger is pressed.



**Figure 2**

**10**

## GRIP SAFETY

The Grip Safety (**Figure 3**) prevents the rearward travel of the trigger, which is necessary to fire the pistol, unless the pistol is firmly in hand with a positive grasp of the Grip Safety. When ready to fire the pistol with a firm hold on the receiver, the forward pressure that is applied to the Grip Safety disengages this safety device and allows the trigger the necessary freedom for rearward movement required to fire the pistol.

**NEVER COMPROMISE SAFETY. NEVER ALTER  
OR MODIFY THIS PISTOL IN ANY WAY.  
THE MANUFACTURER WILL NOT  
BE RESPONSIBLE FOR ANY  
UNAUTHORIZED MODIFICATIONS  
PERFORMED IN THIS GUN.**



**Figure 3**

**11**



## PASSIVE SAFETIES

THESE SAFETIES ARE ACTIVATED AUTOMATICALLY WITHOUT MANUAL INTERVENTION. DO NOT BYPASS THEM OR RENDER THEM INOPERATIVE.

These mechanisms form parts of a safety system incorporated into your Para USA pistol and they are designed and installed for the prevention of accidental discharges that could otherwise follow as the result of some commonplace occurrences.

**NEVER RELY ON A SAFETY MECHANISM TO JUSTIFY CARELESS HANDLING OF YOUR PISTOL.**

Your Para USA pistol is equipped with the following passive safeties:

- Disconnecter:** Protects against firing a round prior to its being properly seated in the chamber of the barrel and the slide and barrel not having locked together.
- Inertia Firing Pin:** The size and position of the firing pin, which is held to the rear by a spring, keeps the pin from striking the cartridge primer unless the spring force and inertia of the firing pin are overcome by the blow of the hammer.
- Hammer Safety Stop:** The hammer is designed with a flat, shelf-like surface which is there to prevent the hammer from falling forward and onto the firing pin unintentionally by engaging the sear should there occur a primary sear notch failure.
- Firing Pin Lock:** To minimize the risk of accidental discharge that may be the result of the pistol being dropped or the muzzle receiving a blow, this safety device prevents the movement of the firing pin until the trigger is intentionally pressed.

**ALWAYS EXPECT THE GUN TO FIRE WHEN YOU PRESS THE TRIGGER.**

## FUNCTION

The action of the Para 1911 GI Expert pistol is based on a tilting barrel design that locks the barrel and slide together at the moment of firing. After firing, the barrel and slide recoil to the rear for a short distance still locked together. Following this initial movement, the barrel tilts downward from its locked position, permitting full recoil of the slide and the extraction and ejection of the spent cartridge cases.

**ALWAYS REMEMBER, THAT WHEN FIRED, A SEMI-AUTOMATIC PISTOL RELOADS AND RECOCKS ITSELF AUTOMATICALLY AND IS READY TO FIRE AGAIN BY SIMPLY PRESSING THE TRIGGER. ALWAYS KEEP THE PISTOL POINTED IN A SAFE DIRECTION.**

## PROPER LUBRICATION

Before using your new pistol for the first time, we recommend that you check to make sure it is properly lubricated.

As always when picking up a handgun for the first time MAKE SURE THE MUZZLE IS POINTED IN A SAFE DIRECTION retract the slide and lock the action of the pistol open.

**REMOVE THE MAGAZINE AND MAKE SURE THERE IS NOT A CARTRIDGE IN THE CHAMBER OF THE BARREL BEFORE LUBRICATING YOUR PISTOL.**

REMOVE THE MAGAZINE and MAKE SURE THERE IS NOT A CARTRIDGE IN THE CHAMBER OF THE BARREL.

Once you have made sure the pistol is unloaded, inspect the outside of the barrel to make sure that it has a light film of oil on it. With the slide locked back turn the pistol over and inspect the grooves on the inside of the slide to make sure they are lubricated (**Figure 4**).



**Figure 4**



**Figure 5**

If the pistol appears to be dry add a drop of gun oil to each of the grooves in the slide and a drop of gun oil behind the muzzle of the barrel (**Figure 5**).

DO NOT let oil get inside the muzzle, if it does, use a bore swab to remove excess oil from the inside of the barrel. Close the slide and place a drop of gun oil on top of the barrel hood (**Figure 6**).



**Figure 6**

WITH THE MUZZLE POINTED IN A SAFE DIRECTION AND THE MAGAZINE REMOVED FROM THE PISTOL, run the slide back and forth several times to work the lubricant between the barrel and the slide and between the slide and the frame.

There is no need to over lubricate your pistol, four drops is all you need. If you have any questions on how to lubricate your pistol consult your Para Dealer or Para Customer Service.

## BREAK-IN PERIOD FOR A LIFETIME OF SERVICE

All Para pistols are hand assembled to exacting tolerances and, like any precision instrument, we recommend that you adhere to the following break-in period before placing your new Para pistol into service.

**BE SURE TO ALWAYS USE ALL PROPER SAFETY PRECAUTIONS WHEN LOADING AND FIRING YOUR PISTOL.**

Take your pistol to the range and carefully follow the SAFETY INSTRUCTIONS which follow on how to load and fire your pistol. Using the correct ammunition for your model pistol (see Table 1) and following the previous CAUTIONS, shoot 50 rounds of ammunition through the pistol alternating with each of the two magazines provided with your pistol. Should you encounter any difficulties try a different brand or type of high quality factory made ammunition.

Remember that you must have a proper grip on the pistol to ensure its reliable function. If you suspect that you are having malfunctions due to an unlocked wrist while shooting your pistol consult your Para Dealer or a certified handgun instructor on the proper technique of gripping your pistol.

Repeat the 50-round break-in cycle. At 250 rounds, field strip your pistol according to the Disassembly instructions starting on page 28. Inspect the pistol for proper lubrication, clean the pistol and re-lubricate it following the Reassembly instructions on page 32. Repeat this cycle until you have reached 500 rounds. If you have any malfunctions consult your Para Dealer or Para Customer Service.

When you do, please, provide them with information on the nature of the malfunction and the brand and type of ammunition you were using.

At Para, we believe that providing you with the best pistol means we stand behind that pistol 100% for as long as you own it. We will provide you as the original retail purchaser all the necessary service, free of charge, for the lifetime of the pistol, where adjustment or repair is required due to some defect in materials or workmanship.



## MALFUNCTIONS

1. In any semi-automatic pistol, an unfired cartridge or fired cartridge case may become jammed between the slide and barrel.

**NEVER FORCE A JAMMED ACTION. TO DO SO MAY CAUSE AN EXPLOSION THAT CAN RESULT IN SERIOUS INJURY, DEATH OR PROPERTY DAMAGE.**

To clear a jammed cartridge, KEEP THE MUZZLE POINTED IN A SAFE DIRECTION and remove the magazine. Pull the slide back and lock it to the rear by engaging the Slide Stop. Remove the cartridge.

2. STOP SHOOTING IMMEDIATELY if you encounter any other mechanical malfunction while firing your pistol, e.g., cartridge has failed to extract, report on firing does not sound right, powder gas is being “spit out,” cartridge primer is punctured or cartridge case is bulged or punctured. HAVE THE FIREARM AND AMMUNITION EXAMINED BY A COMPETENT GUNSMITH.

3. FAILURE TO FIRE: KEEP THE MUZZLE POINTED IN A SAFE DIRECTION and hold it there for 30 seconds to determine if a HANGFIRE (slow ignition) has occurred. If round has not fired within the 30 seconds, remove the magazine, eject the round and examine the primer.

**NOTE:** Disposal of misfired or otherwise damaged, unfired cartridges should be carried out according to instructions provided by the manufacturer of the ammunition.

## LOADING

PRACTICE THESE IMPORTANT ASPECTS OF SAFE GUN HANDLING WITH AN UNLOADED PISTOL OR WITH DUMMY ROUNDS UNTIL YOU ARE ABLE TO PERFORM EACH OF THE FOLLOWING STEPS WITH SKILL AND CONFIDENCE. READ THROUGH THIS MANUAL COMPLETELY BEFORE MAKING ACTUAL USE OF THIS PISTOL.

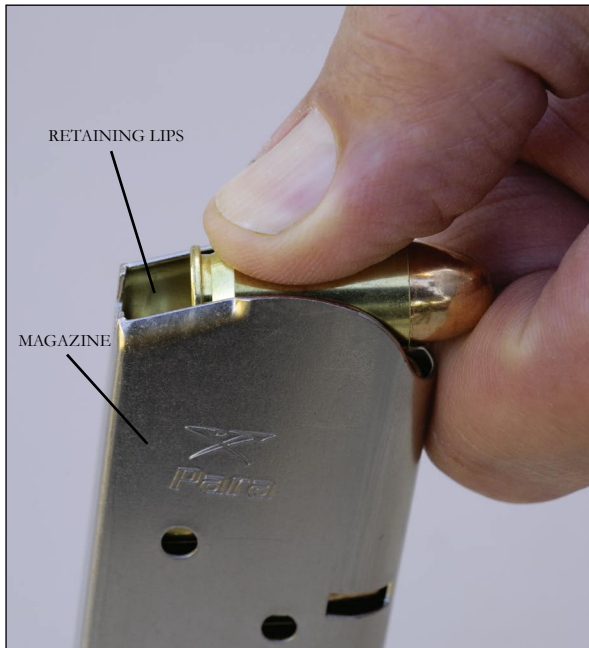
1. Remove the empty magazine from your pistol by pressing on the Magazine Catch button (**Figure 7**).  
**NOTE:** As the magazine will fall free from the receiver of its own weight, place one hand under the magazine to prevent it from dropping to the ground and having it damaged.



**Figure 7**

**DO NOT LOAD DAMAGED AMMUNITION. ALWAYS LOAD YOUR MAGAZINE WITH CLEAN, DRY, ORIGINAL HIGH QUALITY FACTORY MADE AMMUNITION THAT IS IN GOOD CONDITION AND THE PROPER CALIBER FOR YOUR PISTOL (TABLE 1). PRACTICE WITH DUMMY CARTRIDGES.**

2. Load the magazine from the top open end, the front of the cartridge pointing away from the back of the magazine. Use new, commercial ammunition of good quality. Press rounds down and back (**Figure 8**).



**Figure 8**

3. ENSURE THAT THE BARREL CHAMBER IS EMPTY AND THAT THE BORE IS FREE OF OBSTRUCTIONS. To do so, pull back on the slide, by grasping the serrated sides of the slide from the rear, and take a look into the chamber and bore. Having inspected the chamber and bore, and made sure the chamber is empty, allow the slide to return to its forward position. Where this step has caused the hammer to cock, press the trigger causing the hammer to fall with an empty chamber.
4. Insert the magazine into the frame of the pistol with cartridges pointing forward and make sure that the magazine is pressed up far enough to lock into place. **NOTE: DO NOT SLAM THE MAGAZINE INTO PLACE.**
5. WITH THE MUZZLE ALWAYS POINTED IN A SAFE DIRECTION, hold the pistol firmly in the shooting hand without touching the trigger. With the thumb and forefinger of the other hand on the serrated finger grips of the slide, pull the slide back, as far as it will go, to cock the hammer. Release the slide and allow it to fly forward with all its force and feed the top round from the magazine into the chamber. THE PISTOL IS NOW READY FOR INSTANT USE.
6. APPLY SLIDE LOCK SAFETY UNTIL YOU ARE READY TO SHOOT.

**NEVER LEAVE YOUR PISTOL IN THE  
COCKED AND READY TO FIRE POSITION.  
THIS CONDITION IS EXTREMELY  
DANGEROUS.**

## LOADING - ALTERNATE SEQUENCE

PRACTICE THESE IMPORTANT ASPECTS OF SAFE GUN HANDLING WITH AN UNLOADED PISTOL OR WITH DUMMY ROUNDS UNTIL YOU ARE ABLE TO PERFORM EACH OF THE FOLLOWING STEPS WITH SKILL AND CONFIDENCE. READ THROUGH THIS MANUAL COMPLETELY BEFORE MAKING ACTUAL USE OF THIS PISTOL.

1. Insert an **EMPTY** magazine (one with no cartridges in it) into the frame of the pistol. Pull back on the slide, by grasping the serrated sides of the slide from the rear, until the Magazine Follower pushes the Slide Stop up into the Slide Stop Notch on the slide (**Figure 7**). The slide is now locked open in its rearward position and the hammer is cocked.
2. Remove the empty magazine from your pistol by pressing on the Magazine Catch button (**Figure 7**). **NOTE:** As the magazine will fall free from the receiver of its own weight, place one hand under the magazine to prevent it from dropping to the ground and having it damaged.
3. ENSURE THAT THE BARREL CHAMBER IS EMPTY AND THAT THE BORE IS FREE OF OBSTRUCTIONS. VISUALLY AND PHYSICALLY INSPECT THE BARREL CHAMBER TO ENSURE THAT IT IS EMPTY. Insert a loaded magazine into the frame of the pistol with cartridges pointing forward and make sure that the magazine is pressed up far enough to lock into place. **NOTE: DO NOT SLAM THE MAGAZINE INTO PLACE OR OVER INSERT IT.**
4. WITH THE MUZZLE ALWAYS POINTED IN A SAFE DIRECTION, hold the pistol firmly in the shooting hand WITHOUT TOUCHING THE TRIGGER. Pull back on the slide with the other hand, by grasping the serrated sides of the slide from the rear, as far as it will go. Release the slide and

allow it to fly forward with all its force and feed the top round from the magazine into the chamber. THE PISTOL IS NOW READY FOR INSTANT USE.

5. APPLY SLIDE LOCK SAFETY UNTIL YOU ARE READY TO SHOOT.

**NEVER LEAVE YOUR PISTOL IN THE COCKED AND READY TO FIRE POSITION. THIS CONDITION IS EXTREMELY DANGEROUS.**

## UNLOADING

Always unload your pistol immediately after use and before cleaning and storage. **BEFORE PROCEEDING MAKE SURE YOU ARE WEARING SAFETY GLASSES AND KEEP THE PISTOL POINTED AWAY FROM YOUR FACE.**

FOLLOW THIS UNLOADING SEQUENCE EXACTLY IN ORDER TO AVOID THE POSSIBILITY OF THE CHAMBER BEING UNINTENTIONALLY LOADED WITH A LIVE CARTRIDGE.

1. WITH THE MUZZLE ALWAYS POINTED IN A SAFE DIRECTION, hold the pistol firmly in the shooting hand WITHOUT TOUCHING THE TRIGGER. Remove the magazine by placing the other hand below it and pressing the magazine catch button.
2. When unloading prior to the magazine having been totally expended and the slide stop having latched the slide open, keep your hands clear of the ejection port and pull the slide back vigorously to extract and eject a round from the chamber. **NOTE:** If the slide is locked open in its rearward position, this step (Step #2) does not apply.

- CAUTION:** INSPECT THE CHAMBER AND MAKE SURE THAT IT IS EMPTY AND THE MAGAZINE IS OUT OF THE PISTOL.
- With pistol still pointing in a safe direction, release the slide and allow it to snap forward on the empty chamber and then press the trigger and let the hammer fall forward. **NOTE:** If the slide is locked open to its rearward position, pull the slide back slightly and then release it.
- If the magazine contains any cartridges, hold it with the bullet end of the cartridges pointing away from you and press each cartridge forward and out of the magazine.
- SEGREGATE MISFIRED AND DAMAGED AMMUNITION FOR DISPOSAL ACCORDING TO AMMUNITION MANUFACTURER'S INSTRUCTIONS.

## FIRING

**ALWAYS WEAR AND ENCOURAGE OTHERS AROUND YOU TO WEAR EAR PROTECTION AND SAFETY GLASSES WHICH SHOULD PREVENT POSSIBLE PERMANENT HEARING LOSS OR BLINDNESS.**

- WITH THE BARREL ALWAYS POINTING IN A SAFE DIRECTION, load your pistol as previously described in the section on "LOADING."
- With a firm hold on the pistol receiver, KEEPING YOUR FINGER AWAY FROM THE TRIGGER, take aim and press down on the Slide Lock Safety to disengage it from the slide lock notch.
- Take steady aim at your target and place your index finger over the trigger. Press the trigger gently, pulling it to the back, until the hammer falls on the firing pin.

**THIS IS A SEMI-AUTOMATIC PISTOL THAT WHEN FIRED, AUTOMATICALLY RELOADS AND RECOCKS ITSELF AND IS READY TO FIRE AGAIN SIMPLY BY PULLING THE TRIGGER.**

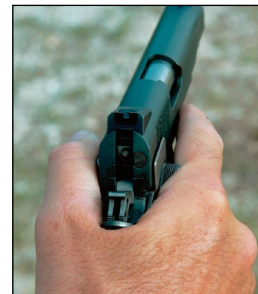
- Immediately following the firing of a shot, and if a subsequent shot is not to be fired at once, apply the Slide Lock Safety by pushing it into the slide lock notch. However, if the last round has already been fired from the magazine the slide will be locked to the rear with the engagement of the Slide Stop and the Slide Lock Safety cannot be applied.
- WITH PISTOL POINTING IN A SAFE DIRECTION, unload as previously described in section on "UNLOADING."

## GRIP

For best performance, always be sure to grip the pistol firmly with a locked wrist and insure that your hands don't press upward on the Slide Stop Lever or Slide Lock Safety, as this can retard slide movement and cause malfunctions.

Here are some tips on how to properly hold your Para pistol from champion shooter Todd Jarrett:

- To reduce recoil, get as high as possible to the center of the bore with your holster-side hand yet without touching the slide (**Figure 9**). This is important for high-speed shooting.



**Figure 9**

2. When holding a pistol, your thumbs should be pointing at the target and sitting lightly on the frame (**Figure 10**). Do not steer the pistol with your thumb or use it to add pressure.



**Figure 10**

3. When gripping a pistol, the right hand thumb will always be on top of the support hand. You will see that the weak hand thumb will be parallel across from the trigger finger (**Figure 11**). Remember, do not touch the slide with any part of your hand—it can disrupt the cycle and cause the firearm to malfunction.



**Figure 11**

4. When both hands are properly positioned on the pistol, there should be an equal amount of pressure all around the frame (**Figure 12**).



**Figure 12**

5. If you release the fingers of your support hand while still gripping the pistol, your fingers should be in a forty-five degree downward angle (**Figure 13**).



**Figure 13**

6. In an equal 50/50 grip, you should apply about as much pressure as if you were swinging a bat or hammer.
7. Even the smallest difference in your hand position when gripping a pistol will change the bullet impact on the target.

## MAINTENANCE

Proper periodic maintenance is essential to the reliable functioning of any firearm. The service life and performance of the pistol depend upon correct handling and proper care. All firearms require periodic maintenance and inspection which may reveal a need for adjustment or repair.

You should clean your pistol as soon after firing as possible and where your pistol has not been fired it should still be cleaned periodically. Have your firearm checked by a competent gunsmith annually, even if no functioning problem exists, since some potential problems may not be apparent from external examination of the pistol.

If the pistol gets wet, or is exposed to sand or other foreign matter, have it cleaned as soon as possible.



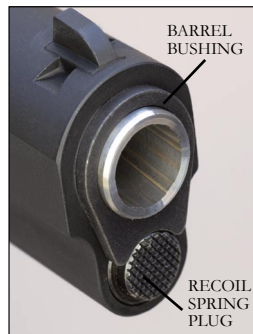
## DISASSEMBLY

**ALWAYS WEAR SAFETY GLASSES AND KEEP PISTOL POINTED AWAY FROM YOUR FACE, WHEN PREPARING TO STRIP AND CLEAN YOUR PISTOL TO AVOID INJURY TO THE EYES IN THE EVENT THAT SOME COMPONENT MAY COME FLYING LOOSE FROM YOUR GUN.**

Follow the steps for disassembly that apply to your pistol, carefully.

**STEP 1.** Always make certain that the **MAGAZINE HAS BEEN REMOVED** and your **PISTOL IS NOT LOADED**. Note that the front of the barrel is retained in the slide with a bushing. The bushing is locked into the slide and held in place by the recoil spring plug (**Figure 14**).

**STEP 2.** With barrel pointing upward and away from your face, place the pistol with the back (heel) of the receiver and the grip safety resting on a table or bench.

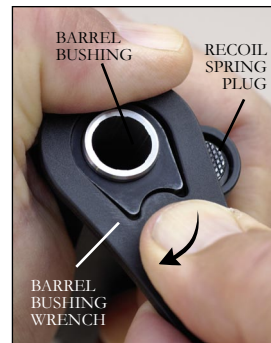


**Figure 14**

## STEP 3.

Using the barrel bushing wrench provided, press down the recoil spring plug (located below the barrel muzzle) while at the same time, rotating the barrel bushing clockwise for about a quarter (1/4) turn so as to free the plug and recoil spring (**Figure 15**).

Continue to apply pressure on the recoil spring plug to prevent ejection of it and the spring. Then, gently and gradually, allow the spring and the recoil spring plug to extend out of the slide (**Figures 16-17**). Once they are out of the slide, remove them from it.



**Figure 15**



**Figure 16**



**Figure 17**

**BEFORE PROCEEDING, MAKE SURE YOU ARE WEARING SAFETY GLASSES AND KEEP THE MUZZLE OF THE PISTOL POINTED AWAY FROM YOUR FACE.**

**STEP 4.** Pull back on hammer spur to cock the hammer.

**STEP 5.** Push the slide back to the point that the slide stop lug is directly opposite the disassembly notch (**Figure 18**). Then push the rounded end of the slide stop pin, on the right side of the receiver, inward and through the receiver and out the left side.



**Figure 18**

Disengage slide stop from the slide by removing slide stop completely from the receiver (**Figure 19**).



**Figure 19**

**NEVER DRY FIRE YOUR PISTOL WITH THE SLIDE REMOVED FROM THE RECEIVER.**

**STEP 6.** Step 6. Push the slide forward and remove the slide from the receiver be sure to catch the recoil spring guide as it drops out (**Figure 20**).



**Figure 20**

**STEP 7.** To remove the barrel bushing from the barrel, turn the bushing counter-clockwise and then push the barrel and bushing forward to the point that the bushing is clear of the slide and can be removed from the barrel (**Figure 21**).



**Figure 21**

**STEP 8.** With barrel bushing already removed, push barrel link forward and remove the barrel through the front of the slide.

**DO NOT DISASSEMBLE YOUR PISTOL ANY FURTHER. DO NOT REMOVE OR ALTER ANY PARTS, ESPECIALLY SAFETY PARTS.**

If your pistol requires further work it should be done at an Authorized Service Center or at the factory.

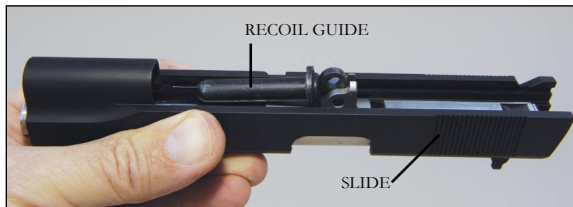
### REASSEMBLY

**BEFORE PROCEEDING, MAKE SURE YOU ARE WEARING SAFETY GLASSES AND KEEP THE MUZZLE OF THE PISTOL POINTED AWAY FROM YOUR FACE.**

**STEP 1.** Rotate barrel link forward and install the barrel through the front of the slide.

**STEP 2.** To install the barrel bushing on the barrel, push the barrel forward enough to allow you to slide the barrel bushing onto it. Then push the bushing rearward until it contacts the slide. Turn it clockwise to engage it in the slide.

**STEP 3.** Position the recoil spring guide as shown in **(Figure 22)**.



**Figure 22**

**STEP 4.** Make sure the plunger lever is down (forward) on top of the receiver, and keep it down by tipping the receiver forward. Wrap your fingers around the front of the slide and hold the recoil spring guide in position. Now, you can run the slide onto the receiver to the point where you can see the barrel link through the slide stop hole in the receiver **(Figure 23)**.



**Figure 23**

**STEP 5.** Grip the frame with one hand and the slide with the other. Now push the slide rearward to properly align the disassembly notch. Snap the slide stop pin into place by pressing up and against the slide stop detent **(Figure 24)**.



**Figure 24**

**STEP 7.** Insert the recoil spring into the slide, making sure the closed end of the spring goes in first (**Figure 25**) and push it over the recoil spring guide until it makes contact with base of the guide.



**Figure 25**



**Figure 26**

Now, place your bushing wrench over the bushing and, while pressing the wrench down firmly to hold the plug down, rotate the bushing counter-clockwise until the plug can snap into place (**Figure 26**).

## SIGHT ADJUSTMENT - Fixed Sights

The front (**Figure 27**) and rear sights are adjustable for windage only. They may be moved to either the left or right in the dovetail. It is recommended that you only move the rear sight for windage adjustment. Always move the rear sight in the direction you want your bullet's impact to go (**Figure 28**).



**Figure 27**



**Figure 28**

## CLEANING PISTOL

1. Disassemble (field-strip) the pistol to the extent described on pages 28 through 32.
2. Clean your pistol by brushing the barrel bore and chamber with a good powder-removing solvent and bore brush. Wipe the areas clean with patches or a swab.
3. Using a small brush dipped in solvent, remove all deposits from around the breech of the barrel, chamber, extractor and adjacent areas which have been subjected to powder residue. Wipe all surfaces clean with patch or swab.
4. After cleaning the entire pistol, use a cloth to apply a light coating of high quality gun oil by passing it once through the barrel and all other surfaces.

**NOTE:** Excess accumulations of oil can interfere with the safe and reliable function of the pistol.

**ALWAYS PASS A DRY PATCH THROUGH THE BARREL TO REMOVE AS MUCH OIL AS POSSIBLE PRIOR TO USING PISTOL. FIRING THE PISTOL WITH OIL, GREASE OR ANY OTHER MATERIAL EVEN PARTIALLY OBSTRUCTING THE BORE MAY RESULT IN DAMAGE TO THE PISTOL WHICH CAN CAUSE INJURY, DEATH, OR PROPERTY DAMAGE.**

**BEFORE PROCEEDING MAKE SURE YOU ARE WEARING SAFETY GLASSES AND KEEP THE MAGAZINE POINTED AWAY FROM YOUR FACE.**

## CLEANING YOUR SINGLE-STACK MAGAZINE



**Figure 29**

This should be done whenever cleaning the pistol or when the magazine is dirty.

Remove the magazine base pad by using a punch to push up the detent in the magazine floor plate. Remember the magazine spring puts pressure on the magazine base plate and magazine base pad. Carefully slide the magazine base plate forward off the magazine body using your hand to trap the magazine base plate and spring so they do not fly out of the magazine body.

Clean the follower, spring, magazine body, magazine base plate and magazine base pad. Lightly lubricate the spring and inside of the magazine body.

To reassemble, insert the magazine follower in the magazine body followed by the spring. Compress the magazine spring with the magazine base pad and slide the magazine base pad over the lips on the bottom of the magazine body. Push the magazine base pad over the magazine base plate until you hear the detent on the base plate snap into the hole on the base pad. The correct position of the spring in the magazine body is seen in **(Figure 29)**.

## TRANSPORTATION AND STORAGE

When transporting your firearm to and from shooting activities, keep it unloaded and obey all laws relating to the transportation of firearms in your area.

When storing your firearm, store it securely and keep it separated from ammunition, under lock and key, and out of the sight and reach of children and other inexperienced persons.

**NOTE:** Protect your firearms from theft.

DO NOT STORE your pistol in anything which will attract moisture, e.g., leather or heavy cloth, and do not store it in an air-tight container or with a plug inserted in the barrel for these are factors that can contribute to corrosion.

EXTENDED STORAGE requires that the internal mechanisms are well oiled with an acid-free lubricating oil or preservative while external mechanisms (receiver, barrel, etc.) should be coated with an anti-rust oil.

COLD CLIMATE STORAGE requires that you make use of an oil which will not congeal at low temperatures. USE SPARINGLY.

**BEFORE USING YOUR FIREARM AGAIN, BE SURE TO CLEAN IT.**

## WARRANTY INFORMATION

Para USA acknowledges its obligations under implied warranty legislation, with respect to the sale of consumer goods, that may be in force in jurisdictions where its products are sold. Due to differences in the extent and interpretation of such statutes, and also on the basis of the Magnusson-Moss Warranty Act of the United States of America, Para USA has elected not to

offer any written or express warranty on its product line and you are advised to consult existing legislation in your country, state or province with regard to any implied warranty rights you may have under such laws. However, Para USA is strongly committed to properly servicing its products, as it has over the years, and in place of an express or written warranty it will provide all necessary service for its pistols free of charge to the original purchaser only, where adjustment or repair is required due to some defect in materials or workmanship.

**NOTE:** Different remedies may be available to you in different jurisdictions.

## SERVICE AND REPAIR

If any problem or question should arise with regard to the performance of your firearm, please contact us, by mail or telephone, and fully describe all circumstances involved. This will allow us to determine the best way to handle your problem. If authorized factory service is deemed necessary, you will be given a return authorization number and shipping instructions.

**MAKE SURE THAT THE MAGAZINE AND PISTOL ARE UNLOADED. DO NOT SHIP ANY CARTRIDGES WITH A FIREARM.**

WHEN AUTHORIZED TO SHIP YOUR FIREARM FOR ADJUSTMENT OR REPAIR, PLEASE CAREFULLY NOTE THE FOLLOWING:

1. A detailed, written explanation of your problem should accompany the firearm being shipped for service or repair. Include model name, serial number and your return address (day telephone number optional). Also include a copy of your original proof of purchase.

- All firearms should be shipped by common carrier (e.g., UPS), prepaid (we will not accept collect shipments) and insured for their full value. It is illegal for unlicensed individuals to ship handguns through the mail.
- Due to the vast number of laws governing the transfer and transportation of firearms, it is strongly recommended that your firearm be shipped through a licensed dealer who will also accept delivery on your behalf when the pistol is returned. The shipment should be accompanied by a signed copy of the dealer's license.
- DO NOT include holsters, custom grips or other accessories when shipping your firearm for service.
- DO NOT indicate the nature of the contents on the package.
- DO include the return authorization number on the outside of the package.

## LIMITS OF LIABILITY

**NOTE: PARA USA HAS CAREFULLY PACKAGED THIS PRODUCT PRIOR TO SHIPMENT FROM THE FACTORY. PLEASE EXAMINE IT CAREFULLY AT TIME OF PURCHASE TO ENSURE IT IS UNDAMAGED.**

PARA USA SHALL NOT BE RESPONSIBLE IN ANY MANNER WHATSOEVER FOR INJURY, DEATH, OR DAMAGE TO PROPERTY AS A RESULT OF THE INTENTIONAL OR ACCIDENTAL DISCHARGE OF THIS FIREARM, OR FROM ITS PROPER FUNCTION WHEN THE PISTOL IS USED FOR PURPOSES FOR WHICH IT WAS NOT DESIGNED. FURTHERMORE, PARA USA SHALL NOT BE RESPONSIBLE FOR ANY CLAIMS THAT MAY ARISE AS A RESULT OF, WHETHER IN WHOLE OR IN PART, IMPROPER OR CARELESS HANDLING, UNAUTHORIZED MODIFICATIONS, USE OF IMPROPER AMMUNITION (WRONG CALIBER,

**DEFECTIVE, HAND LOADED, OR RELOADED CARTRIDGES) THAT IS NOT ORIGINAL HIGH QUALITY COMMERCIALLY MANUFACTURED AND IN GOOD CONDITION, ABUSE, NEGLECT, CORROSION, OR OTHER INFLUENCES BEYOND OUR IMMEDIATE AND DIRECT CONTROL. UNDER NO CIRCUMSTANCES SHALL PARA USA BE RESPONSIBLE FOR INCIDENTAL OR CONSEQUENTIAL DAMAGES, SUCH AS LOSS OF USE OF PROPERTY, LOSS OF EARNINGS OR PROFITS, OR ANY OTHER COMMERCIAL LOSS.**

**NOTE: DIFFERENT REMEDIES MAY BE AVAILABLE TO YOU IN DIFFERENT JURISDICTIONS.**

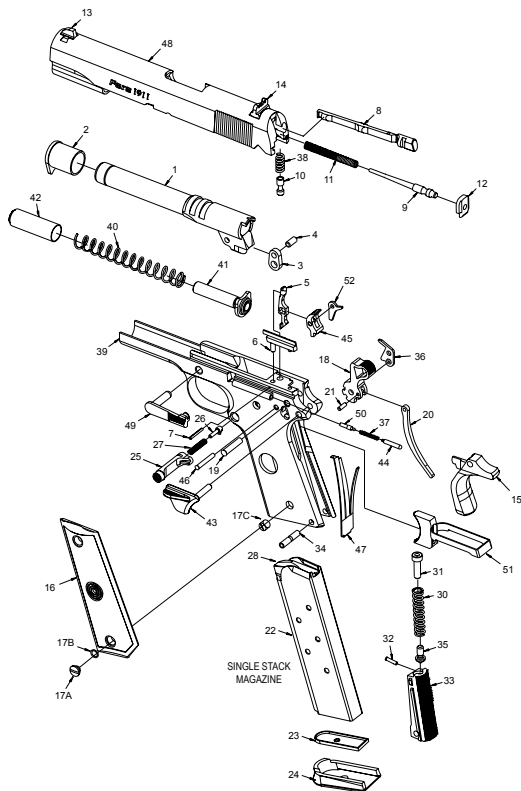
## SPARE PARTS

For Para USA replacement parts please contact your local dealer who should be able to assist you. Alternatively, you can also contact the Para USA Parts Department by mail or phone, for up-to-date information on the names and locations of our Authorized Service Centers as well as current parts prices.

**PARTS AVAILABLE FOR SALE SHOULD BE INSTALLED AT A PARA USA AUTHORIZED SERVICE CENTER. OTHERWISE, IT IS THE PURCHASER'S TOTAL RESPONSIBILITY TO MAKE ABSOLUTELY CERTAIN THAT ANY PARTS FITTED AND INSTALLED ARE OF THE CORRECT TYPE AND THE WORK IS PERFORMED BY A COMPETENT PERSON.**

**PARA USA WILL NOT BE RESPONSIBLE FOR ANY UNAUTHORIZED ALTERATIONS PERFORMED, UNAUTHORIZED ATTACHMENTS FITTED OR UNAUTHORIZED PARTS USED ON THIS PRODUCT.**

## GI EXPERT – PARA 1911 PARTS ILLUSTRATION



## GI EXPERT – PARA 1911 PARTS LIST

- |                          |                         |
|--------------------------|-------------------------|
| 1. BARREL                | 28. MAGAZINE FOLLOWER   |
| 2. BARREL BUSHING        | 29. MAGAZINE SPRING     |
| 3. BARREL LINK           | (NOT SHOWN)             |
| 4. BARREL LINK PIN       | 30. MAIN SPRING         |
| 5. DISCONNECTOR          | 31. MAIN SPRING CAP     |
| 6. EJECTOR               | 32. MAIN SPRING CAP PIN |
| 7. EJECTOR PIN           | 33. MAIN SPRING HOUSING |
| 8. EXTRACTOR             | (FLAT)                  |
| 9. FIRING PIN            | 34. MAIN SPRING HOUSING |
| 10. FIRING PIN PLUNGER   | PIN                     |
| 11. FIRING PIN SPRING    | 35. MAIN SPRING HOUSING |
| 12. FIRING PIN STOP      | PIN RETAINER            |
| 13. FRONT SIGHT          | 36. PLUNGER LEVER       |
| 14. REAR SIGHT           | 37. PLUNGER SPRING      |
| 15. GRIP SAFETY          | 38. PLUNGER SPRING F/P  |
| 16. GRIP (SET)           | 39. RECEIVER            |
| 17A. GRIP SCREW (4)      | 40. RECOIL SPRING       |
| 17B. GRIP SCREW LOCKING  | 41. RECOIL SPRING GUIDE |
| RINGS                    | 42. RECOIL SPRING PLUG  |
| 17C. GRIP SCREW BUSHING  | 43. SLIDE LOCK SAFETY   |
| 18. HAMMER               | 44. SAFETY LOCK PLUNGER |
| 19. HAMMER PIN           | 45. SEAR                |
| 20. HAMMER STRUT         | 46. SEAR PIN            |
| 21. HAMMER STRUT PIN     | 47. SEAR SPRING         |
| 22. MAGAZINE BODY        | 48. SLIDE               |
| 23. MAGAZINE FLOOR PLATE | 49. SLIDE STOP          |
| 24. MAGAZINE BASE PAD    | 50. SLIDE STOP PLUNGER  |
| 25. MAGAZINE CATCH       | 51. TRIGGER ASSEMBLY    |
| 26. MAGAZINE CATCH LOCK  | 52. TRIGGER BAR LEVER   |
| 27. MAGAZINE CATCH       | SPRING                  |



## **FIREARM RECORD**

**MODEL**

---

**SERIAL NO.**

---

**PURCHASED FROM**

---

---

---

**DATE PURCHASED**

---

This instruction manual should always accompany this firearm and be transferred with it upon change of ownership.

# ***Para* USA™**

10620 SOUTHERN LOOP BLVD.

CHARLOTTE, NC 28134-7381

(954) 202-4440

[www.para-usa.com](http://www.para-usa.com)

**MANUAL #P1108G**