

ROSSI

FIREARMS

Owner's Manual for Rossi Revolvers



READ CAREFULLY BEFORE USING YOUR FIREARM



THIS BOOKLET

The safety warnings in this booklet are important. By understanding the dangers inherent in the use of any firearm, and by taking the precautions described herein, you can enjoy complete safety in the use of your Rossi firearm. Failure to heed any of these warnings may result in serious injury to you or others, as well as severe damage to the firearm or other property.

CONTENTS

1. Safety Precautions	Page 04
2. Ammunition	Page 09
4. Taurus Security System	Page 13
5. Revolver Operation	Page 14
6. Care and Maintenance	Page 18
7. Exploded View	Page 20
Parts List	Page 22
8. Limited Warranty	Page 23
9. Braztech Service Policy	Page 24



This Booklet

The safety warnings in this booklet are important. By understanding the dangers inherent in the use of any firearm, and by taking the precautions described herein, you can enjoy complete safety in the use of your revolver manufactured by Taurus and branded as Rossi. Failure to heed any of these warnings may result in serious injury to you or others, as well as severe damage to the firearm or other property.

Dangerous Weapons

REVOLVERS are classified as FIREARMS or DANGEROUS WEAPONS and are sold by us with the specific understanding that we are not responsible in any manner whatsoever for their improper or negligent handling or resale under local laws and regulations.

TAURUS shall not be responsible in any manner whatsoever for malfunctioning of the firearm, or for physical injury or property damage, resulting in whole or in part from (1) criminal or negligent discharge, (2) improper or careless handling, (3) unauthorized modifications, (4) defective, improper hand-loaded, or reloaded ammunition, (5) neglect, or (6) other influences beyond our direct and immediate control. This limitation applies regardless of whether liability is asserted on the basis of contract, negligence or strict liability (including any failure to warn). Under no circumstance shall TAURUS be liable for incidental or consequential damages, such as loss of use of property, commercial loss and loss of earnings or profits.

Warning

Failure to properly secure a firearm may result in injury or death.

Warning

To prevent injury or death, it is imperative that you must keep your gun unloaded, uncocked, and securely locked, with ammunition in separate location. In addition, take any other reasonable steps to limit the possibility of theft, accident, or suicide.

Warning

Securing your firearm may inhibit access to it in a defense situation and result in injury or death.

NOT JUST FOR BEGINNERS

Regardless of your familiarity or experience with firearms, you need to study this manual.

The safe handling of firearms requires specialized training, discipline and caution. Firearms, by their nature and intended function, are deadly instruments. Accidental death or serious injury can result if they are handled improperly or carelessly.

Firearms rarely cause accidents. Firearms accidents almost always are caused by a failure to obey the basic rules of gun safety. Unfortunately, experienced shooters are found to violate these rules as frequently as beginners. Thus the basics of safe firearms handling cannot be repeated too often. Read, re-read and memorize the basic principles of firearms safety until they become second nature: habits that you don't forget.

If you have any question about your knowledge or ability to use this or any other firearm with complete safety you should seek supervised instruction.

Personalized instruction is often available from firearms dealers, gun clubs, state hunter safety programs or police departments in the United States. If none of these sources is accessible, write to the National Rifle Association, Washington, D.C. 20036. **THEY WILL ASSIST YOU.**

A person with a firearm in his possession has a full-time responsibility. He must **KNOW** how to keep and use his firearm safely, and then must always **TAKE** the precautions necessary – all of them. He cannot guess; he cannot forget. This responsibility is his alone. It cannot be passed off to someone else.

Remember: no firearm can be made accident-proof. A firearm is just a machine, with no judgement of its own. It responds to your actions, whether wise or foolish. The only truly effective safety device is the mind of a cautious shooter who never forgets that a moment's carelessness can produce permanent tragedy.

Guns Are Not Alike

Many makes and models of firearms might LOOK nearly the same. However, they differ widely in design and operation, and in the location and function of various controls.

Study this manual thoroughly. Educate yourself on the characteristics and operation of your particular firearm before attempting to handle it.

Do not permit others to handle it - unless they also have done so. You should have an instruction manual for every firearm you own. If you do not, write the manufacturer and obtain one. Most manufacturers will gladly send you one free. If for any reason a manual is not available, visit your public library. Many books have been published which contain detailed information on obsolete or discontinued firearms.

Your knowledge can prevent injuries.

You also may access the Rossi web site at rossiusa.com to view and print manuals.

Rossi handguns are designed and made to offer maximum safety when correctly used. However, as with any other firearm, it is not foolproof, and may become very dangerous if the following basic recommendations are not RIGIDLY observed:

ATTENTION

Rules of Firearms Safety

1. **DANGER:** Never, never-ever point any gun, loaded or unloaded, at anything you do not intend to shoot.
2. **WARNING:** Always treat every gun as if it were loaded.
3. **NOTICE:** Get instruction from a competent firearms instructor before using any gun.
4. **SAFETY FIRST:** The safety is only a mechanical device, not a substitute for common sense.
5. **WARNING:** Keep your finger off the trigger until you are actually aiming at the target ready to shoot.
6. **WARNING:** Be certain the gun is unloaded before cleaning.
7. **WARNING:** Always empty gun before entering a place where there are people.
8. **SAFETY FIRST:** Never leave a loaded gun unattended.
9. **SAFETY FIRST:** Store gun and ammunition separately beyond the reach of children.
10. **WARNING:** Don't test the safety by pulling the trigger while the safety is on unless you are absolutely sure the firearm is empty and you are pointing away from everyone.
11. **SAFETY FIRST:** Be sure of your target and backstop before you shoot.

12. **WARNING:** Guns and alcohol or drugs don't mix. Do not shoot or handle firearms after consuming beer, wine, other alcoholic beverages or any medications or other drugs that may affect your ability.
13. **WARNING:** Never pull a gun towards you by the barrel. Don't climb a tree or cross a fence with a loaded gun.
14. **DANGER:** Load and unload with the barrel pointed in a safe direction.
15. **SAFETY FIRST:** If a gun fails to fire when the trigger is pulled, keep it pointed at the target for at least 30 seconds. Sometimes slow primer ignition will cause a "hang" fire and the cartridge will go off after a short pause.
16. **SAFETY FIRST:** Never shoot at hard flat surfaces or water, bullet may ricochet.
17. **DANGER:** When receiving a gun always check that it is unloaded, (open cylinder to check if it is empty), even if you saw it done previously.
18. **DANGER:** Never put your hand over the barrel of a gun.
19. **DANGER:** Check ammunition to be sure it is the right size and caliber, and that it is not dented.
20. **SAFETY FIRST:** Use a proper holster and draw only if you intend to shoot
21. **NOTICE:** Never cock the gun until you are ready to shoot.
22. **SAFETY FIRST:** Dry firing is bad for this gun, whether the hammer block is engaged or not.
23. **DANGER:** WHILE HANDLING ANY FIREARM, NEVER ALLOW IT TO POINT AT ANY PART OF YOUR BODY OR AT ANOTHER PERSON, NO HARM SHOULD RESULT IF YOU OBEY THIS RULE, EVEN IF AN ACCIDENTAL DISCHARGE OCCURS.
24. Revolvers have "SIDE BLAST" or "CYLINDER BLAST", hot gases and particles escaping at high speeds to the sides of the gun from the clearance gap between the cylinder and barrel. Keep people behind and away from you and keep your hands and body clear of the sides of the revolver when firing.
25. **CAUTION:** If there is any reason to suspect that a bullet is obstructing the barrel, immediately unload the firearm and look through the bore.
It is not sufficient to merely look in the chamber.
26. **SAFETY FIRST:** Treat this gun as a precision instrument.
27. **WARNING:** Old or reloaded ammunition may be dangerous. We recommend against using it.
28. **SAFETY FIRST:** Never carry handgun in your pocket, purse or waist band. Use a pistol case or proper holster with safety flap or strap.
29. **DANGER:** Don't try to change your gun's trigger pull, because alteration of trigger pull usually affects sear engagement and may cause accidental discharge.
30. **DANGER:** Never engage a gun lock on a loaded firearm.

Write to us concerning any items or circumstances which might relate to your safety and the operation of our products.

Warning

Rossi revolvers are manufactured to perform properly with the original parts as designed. It is your duty to make sure any parts you buy are installed correctly and that neither replacements nor originals are altered or changed. Your gun is a complex tool with many parts that must relate correctly to other parts. Putting a gun together wrong or with modified parts can result in a damaged gun, danger and injury or death to you and others through malfunction.

Protect Your Eyes And Ears

Always wear adequate shooting glasses and ear plugs or “ear muff” type protectors whenever you are shooting.

Always make certain that persons close to you are similarly protected.

Unprotected eyes may be injured by powder, gas, carbon residue, lubricant, metallic particles or similar debris which may emanate occasionally from any firearm in normal use.

Without ear protection, repeated exposure to shooting noise will lead to cumulative, permanent hearing loss.



Ammunition

1. Use only high quality, original, factory-manufactured ammunition. Do not use cartridges that are dirty, wet, corroded, bent or damaged. Do not oil cartridges. Do not spray aerosol-type lubricants, preservatives, or cleaners directly onto cartridges or where excess spray may flow into contact with cartridges. Lubricant or other foreign matter on cartridges can cause potentially dangerous ammunition malfunctions.

USE ONLY AMMUNITION OF THE CALIBER FOR WHICH YOUR FIREARM IS CHAMBERED. THE PROPER CALIBER IS PERMANENTLY ENGRAVED ON YOUR FIREARM; NEVER ATTEMPT TO USE AMMUNITION OF ANY OTHER CALIBER.

2. The use of reloaded, “remanufactured”, hand-loaded, or other non-standard ammunition voids all warranties. Improperly loaded ammunition voids all warranties. Improperly loaded ammunition can be extremely dangerous. Severe damage to the firearm and serious injury to the shooter or to others may result. Always use ammunition that complies with the industry performance standards established by the Sporting Arms and Ammunition Manufacturers Institute, Inc., of the United States, (SAAMI) or the equivalent from other countries.

3. Firearms may be severely damaged and serious injury to the shooter or to others may result from any condition causing excessive pressure inside the chamber or barrel during firing. Excessive pressure can be caused by obstructions in the barrel, propellant powder overloads, or by the use of incorrect cartridges or defectively assembled cartridges. In addition, the use of a dirty, corroded, or damaged cartridge can lead to a burst cartridge case and consequent damage to the firearm and personal injury from the sudden escape of high-pressure propellant gas within the firearm’s mechanism.

4. Immediately stop shooting and check the barrel for a possible obstruction whenever:

- You have difficulty in, or feel unusual resistance in, chambering a cartridge, or
- A cartridge misfires (does not go off), or
- The mechanism fails to extract a fired cartridge case, or
- Unburned grains of propellant powder are discovered spilled in mechanism, or
- A shot sounds weak or abnormal. In such cases it is possible that a bullet is lodged part way down the barrel. Firing a subsequent bullet into the obstructed barrel can wreck the firearm and cause serious injury to the shooter or to bystanders.

5. Bullets can become lodged in the barrel.

- If the cartridge has been improperly loaded without propellant powder, or if the powder fails to ignite (Ignition of the cartridge primer alone will push the bullet out the cartridge case, but usually does not generate sufficient energy to expel the bullet completely from the barrel).
- If the bullet is not properly seated tightly in the cartridge case.

When such a cartridge is extracted from the chamber without being fired, the bullet may be left behind in the bore at the point where the rifling begins.

Subsequent chambering of another cartridge may push the first bullet further into the bore.

6. If there is any reason to suspect that a bullet is obstructing the barrel, immediately unload the firearm and look through the bore. It is not sufficient to merely look in the chamber. A bullet may be lodged some distance down the barrel where it can not easily be seen.

IF A BULLET IS IN THE BORE, DO NOT ATTEMPT TO SHOOT IT OUT BY USING ANOTHER CARTRIDGE, OR BY BLOWING IT OUT WITH A BLANK OR ONE FROM WHICH THE BULLET HAS BEEN REMOVED. SUCH TECHNIQUES CAN GENERATE EXCESSIVE PRESSURE, WRECK THE FIREARM AND CAUSE SERIOUS PERSONAL INJURY.

If the bullet can be removed with a cleaning rod, clean any unburned powder grains from the bore, chamber and mechanism before resuming shooting. If the bullet cannot be dislodged by tapping it with a cleaning rod, take the firearm to a gunsmith.

7. Dirt, corrosion, or other foreign matter on a cartridge can impede complete chambering and may cause the cartridge case to burst upon firing. The same is true of cartridges which are damaged or deformed.

8. Do not oil cartridges, and be sure to wipe the chamber clean of any oil or preservative before commencing to shoot. Oil interferes with the friction between cartridge case and chamber wall that is necessary for safe functioning, and subjects the firearm to stress similar to that imposed by excessive pressure.

9. Use lubricants sparingly on the moving parts of your firearm. Avoid excessive spraying of any aerosol firearm care product, especially where it may get on ammunition. All lubricants and aerosol spray lubricants in particular, can penetrate cartridge primers and cause misfires. Some highly penetrative lubricants can also migrate inside cartridge cases and cause deterioration of the propellant powder; on firing, the powder may not ignite. If only the primer ignites, there is danger that the bullet may become lodged in the barrel.

WARNING concerning ammunition marked “+P” and “+P+”

Recently there have been many developments by ammunition manufacturers and reloaders, not all of them good. It seems some ammunition manufacturers and reloaders are in a horsepower race to see who can develop the most case pressure and muzzle velocity with little regard for practicality or safety. Some of these loads exceed common sense and can virtually tear metal apart. Rossi Firearms rated for “+P” ammunition are rated for Sporting Arms and Ammunition Manufacturers Institute (SAAMI) compliant “+P” ammunition. **SAAMI does not recognize any “+P+” ammunition at all. It is DANGEROUS to fire “+P+” ammunition in any Rossi firearm and if you do so you may be seriously injured or killed.**

In addition, it seems some ammunition marked “+P” is not SAAMI compliant either. **There are only four calibers that can carry a “+P” rating from SAAMI.** They are 38 Special +P, 9mm Luger +P, 38 Super Automatic and 45 Automatic +P. **There are no other SAAMI approved “+P” loads.** Any ammunition in any other caliber marked “+P” is not SAAMI compliant, may be dangerous and should not be used.

DANGER for “+P+”

Never use “Plus -P -Plus” (+P+) rated ammunition in any Rossi firearm.

The Sporting Arms and Ammunition Manufacturers Institute (SAAMI) does not recognize such ratings and such ammunition can be very dangerous. Firing such ammunition can cause catastrophic failure in firearms resulting in serious bodily injury or death.

WARNING for “+P”

Only fire SAAMI rated Plus P (“+P”) ammunition in Rossi Models designated by Rossi for +P use. Firing +P ammunition in other Rossi products may be dangerous and can result in serious bodily injury or death. **Approved Rossi models include, and are limited to, any firearm chambered in 38 Special.**

WARNING

Even if your Rossi firearm is rated for Plus P (“+P”) ammunition, such ammunition generates pressures significantly in excess of the pressures associated with standard ammunition. Such pressures may affect the useful life of the firearm or exceed the margin of safety built into many firearms. Unless you need +P ammunition, do not use it, particularly for practice.

Safety Features

Your Rossi revolver is equipped with an exposed hammer which serves as an immediate safety device, indicating instantly by sight or touch whether the revolver is cocked.

The hammer is of the rebounding type, in which the firing pin is not thrust into contact with a chambered cartridge except when the trigger is pulled. In addition, the hammer-trigger mechanism incorporates an internal hammer block which interposes a block of steel between the hammer nose and primer. The hammer block is withdrawn only when the hammer is cocked, thus preventing an accidental discharge should the revolver be dropped, uncocked, and sustain a sharp blow on the hammer.

Therefore, unlike most single - action revolvers, your Rossi revolver is mechanically safe when carried with the cylinder fully loaded.

Finally the revolver cannot be cocked unless the cylinder is fully latched shut, nor can the cylinder be opened if the revolver is cocked.

Warning

Discharging firearms in poorly ventilated areas, cleaning firearms, or handling ammunition may result in exposure to lead and other substances known to cause birth defects, reproductive harm, and other serious physical injury. Have adequate ventilation at all times. Wash hands thoroughly after exposure.

Revolver with Taurus Security System®

The Rossi revolver is equipped with the exclusive “Taurus Security System.” The system is designed to preclude use of the weapon when the mechanism is engaged. It consists of an integral mechanism located in the hammer (Fig.A).



When properly engaged by use of the key, it prevents the functioning of the revolver. The engagement of the mechanism can only be done utilizing a special key that fits the activation pin.

Engagement (Secure)

To engage the system, it is necessary to insert the key into the activation pin and turn it clockwise until a “click” is felt or heard (Fig.B). In this position, the revolver’s mechanism is locked and the pin protrudes above the surface of the hammer (Fig.1B)



Disengagement (Ready-to-Fire)

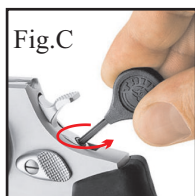
To place the revolver in a firing condition, you must insert the key in the security mechanism pin and turn the key counter-clockwise (Fig.C). In this position the top of the pin is in the same plane with the hammer surface (Fig.1C). The revolver is now ready to fire.



Warning:

All handguns must be kept out of the reach of children or persons not authorized to use them. Ammunition should be kept separated from the handgun. Never fully rely on any safety or security mechanism. It is not a substitute for safe and cautious gun handling. No safety or security mechanism, however positive or well designed, should be totally trusted. Like all mechanical devices, the safety or security system is subject to breakage or malfunction and can be adversely affected by wear, abuse, dirt, corrosion, incorrect assembly, improper adjustment, repair, or lack of maintenance.

Moreover, there is no such thing as a safety which is “childproof” or which can completely prevent accidental discharge from improper usage, carelessness or “Horseplay”.



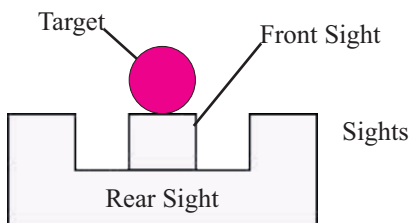
Position For Target Shooting

Take such stance that your body faces the target at a 90 degree angle. Keep your feet 1 ft. to 1-1/2 ft. apart. Raise your arm so that it lines up naturally with the target. Your head should be turned as needed, so as to have a good sight picture.

When you are in a correct position, aim the gun and squeeze the trigger.

Aiming

Align the front and rear sights carefully. The top of the front sight must be leveled with the top of the rear sight and set in the middle of the rear sight notch. The bullseye should rest on the top of the sights.

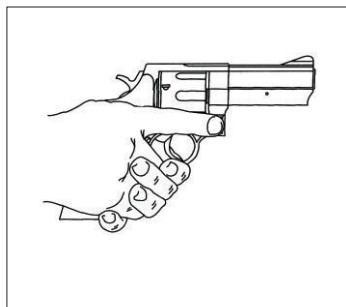
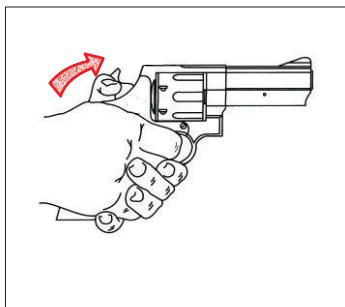


Squeeze Of The Trigger

Squeeze the trigger carefully with index-finger, keeping sight aligned with the target. If the trigger is jerked, the target will possibly be missed due to the movement of the gun. The pressure should be applied between the tip and the first joint of the finger. Press slowly and carefully. More speed will be gained with practice.

Decocking the Hammer

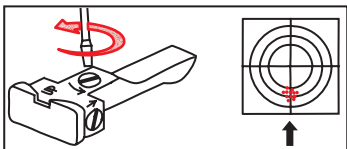
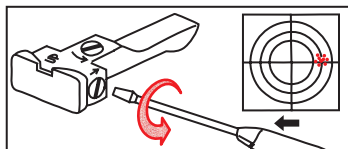
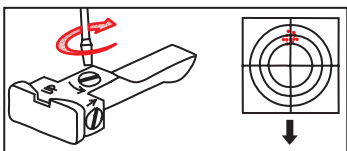
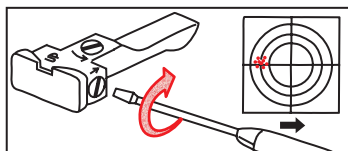
If, for any reason, the hammer of the revolver needs to be decocked, please follow the next steps: first, make sure the barrel is point in a safe direction. With the thumb, press firmly on the serrated spur of the hammer. While pressing on the hammer, carefully squeeze the trigger until you feel the hammer release. Then slowly and carefully, return the hammer softly to its rest position. This procedure should first be tried on an unloaded revolver. The hammer should not be cocked unless absolutely ready to shoot.



Adjusting The Sights

To raise the rear sight, turn the elevation adjusting screw counter-clockwise.

To lower the rear sight turn the screw clockwise. When raising the sight the point of impact rises. Lowering the sight, the point is lowered. The rear sight can also be adjusted for windage. Turn the windage adjusting screw clockwise to move the notch to right side, and counter-clockwise to move the notch to left side.



Loading

Your Rossi revolver may be chambered for one of three different cartridges: .22 Long Rifle, .38 Special or .357 Magnum.

The correct cartridge for use in your particular revolver is stamped on the right side of the barrel. **USE ONLY THAT CARTRIDGE AND NO OTHER!**

To load, point the barrel in a safe direction and push forward on the thumb piece on the left side of the frame, while simultaneously pushing on the right side of the cylinder so that the cylinder swings open. Insert the cartridges in the cylinder and gently but firmly return it to its closed position until it latches. **DO NOT VIOLENTLY SNAP THE CYLINDER OPEN OR CLOSED, AS THIS MAY DAMAGE THE REVOLVER.**



Warning

- 1) **DANGER:** Always keep the barrel pointed in a safe direction!
- 2) **SAFETY FIRST:** Never attempt to load or unload any firearm inside a vehicle, building or confined space. This is extremely dangerous. Do it safely - outside!
- 3) **SAFETY FIRST:** Before loading, always clean all grease and oil from the bore and chambers, and check to be sure that no obstruction remains. Any foreign matter in the barrel or chambers could result in a bulged or burst barrel or cylinder and could cause serious injury to the shooter or others.

THE BEST SAFETY DEVICE IS YOUR OWN GOOD SENSE. USE IT!

Unloading

Warning

ALWAYS KEEP THE BARREL POINTED IN A SAFE DIRECTION WHEN UNLOADING

To unload, open the cylinder as previously described under Loading. Elevate the barrel, with the cylinder fully open, push rearward, smartly on the front of the extractor rod. This will extract all cartridges so that they will either drop out or can be pulled out with the fingers.



Warning

- 1) **DANGER:** Never point any firearm - loaded or unloaded - at anything you do not intend to shoot. Keep the barrel pointed in a safe direction.
- 2) **WARNING:** Keep your finger off the trigger until you are ready to fire.
- 3) **SAFETY FIRST:** Always be sure of your backstop! Make certain that your backstop is adequate to stop and contain your bullets. Remember, your bullet can carry for more than a mile.
- 4) **SAFETY FIRST:** Never shoot at hard surfaces like rock, water or steel plates. The bullet could ricochet and travel in any direction to strike you or a person or object you cannot see, causing property damage or serious injury.

Care and Maintenance

A . The gun may be cleaned and lubricated under normal conditions without the need of any disassembly.

B . In special conditions, such as repairs, when disassembling is necessary, it is recommended the gun be returned to the factory or sent to a competent gunsmith or to the importer.

C . In order to keep a gun in perfect condition it must be kept clean and covered with a slight film of good quality oil to prevent corrosion. This is specially necessary after use.

D . For normal cleaning of handgun not used or kept in storage for some time, it is necessary to rub it with a lightly oiled cloth. In the same way proceed with the bore of the barrel. The excess oil must be removed, but a thin protecting film should remain. Also the dust should be removed from all crevices with a small clean brush.

E . For cleaning after shooting, it is of special importance that all residues of powder be removed from barrel and other adjacent areas subject to such deposits, using an appropriate brush. If particles of lead are detected in barrel they must be scrubbed with a brass brush, drenched with oil. Once cleaned, lubrication should be done as above described. When shooting more than 200 rounds in a row, your firearm should be cleaned before further shooting.

F . Do not keep handguns in contact with materials that attract moisture or possess a certain degree of acidity, or in environments with great variation of temperature or of humidity. Avoid the use of holsters of cloth or of any other material except natural leather appropriately cured.

G . If the weapon is to be stored for a long period of time, extreme care should be taken with metal surfaces, in order to protect them against corrosion.

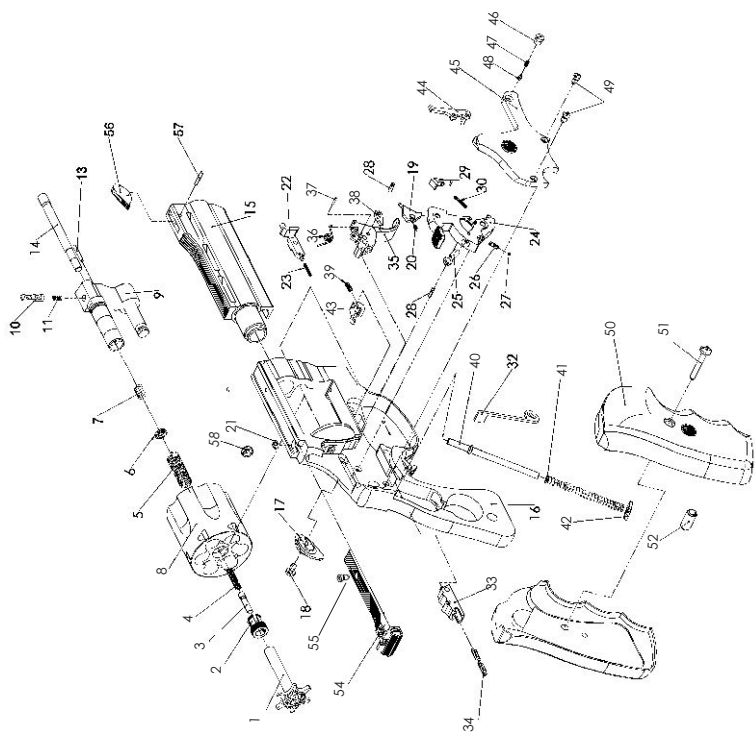
Model Specifications

Model	Caliber	Capacity	Barrel Length	Overall Length	Weight [oz]	Finish
R351	.38	5	2"	6 5/8"	22	B
R352	.38	5	2"	6 5/8"	22	SS
R461	.357	6	2" 3"	6 3/4" 7 3/4"	26 27.5	B B
R462	.357	6	2"	6 3/4"	26	SS
R851	.38	6	4"	8 1/2"	31.6	B
R971	.357	6	4"	8 1/2"	31.5	B
R972	.357	6	6"	10 1/2"	34.9	SS
R98 Plinker	.22 LR	8	4"	8 1/2"	29.1	SS or B

B = Blued Steel

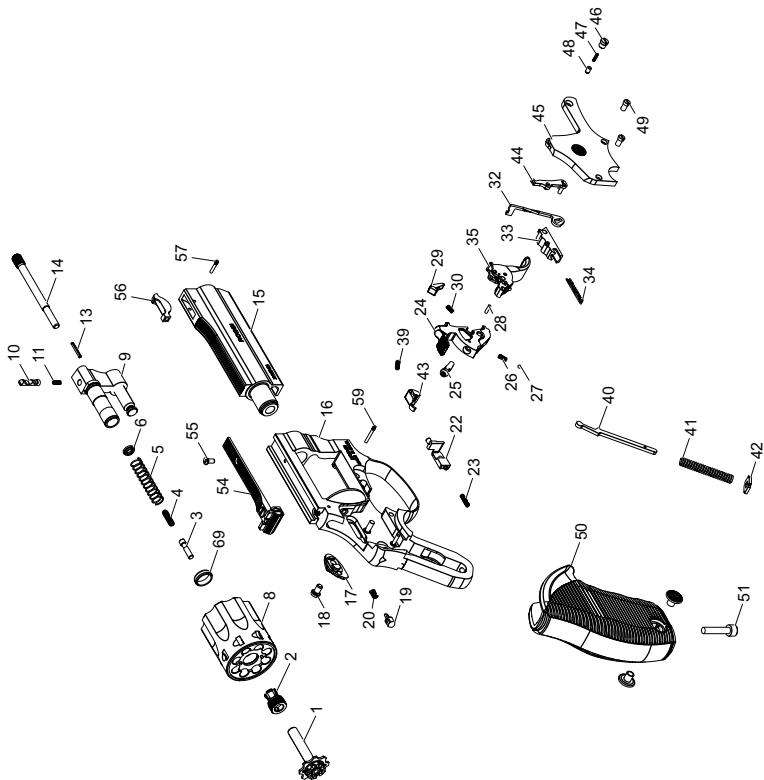
SS = Stainless Steel

Exploded View



Exploded View

For model R98 Plinker



Part List

- | | | | |
|----|-----------------------------------|----|---------------------------|
| 1 | EXTRACTOR | 33 | REBOUND SLIDE |
| 2 | CYLINDER RETAINING BUSHING | 34 | TRIGGER SPRING |
| 3 | CENTER PIN | 35 | TRIGGER ASSEMBLY |
| 4 | CENTER PIN SPRING | 36 | HAND CYLINDER SPRING |
| 5 | EXTRACTOR SPRING | 37 | HAND SPRING PIN |
| 6 | EXTRACTOR ROD COLLAR | 38 | TRIGGER LEVER |
| 7 | EXTRACTOR ROD SPRING | 39 | CYLINDER STOP SPRING |
| 8 | CYLINDER | 40 | MAIN SPRING CENTER PIN |
| 9 | YOKE | 41 | MAIN SPRING |
| 10 | FRONT LATCH | 42 | MAIN SPRING PLATE |
| 11 | FRONT LATCH SPRING | 43 | CYLINDER STOP |
| 12 | CYLINDER STOP PLUNGER WITH SPRING | 44 | HAND |
| 13 | FRONT LATCH PIN | 45 | SIDE PLATE |
| 14 | EXTRACTOR ROD | 46 | YOKE SCREW ASSEMBLY |
| 15 | BARREL | 47 | YOKE RETAINING PIN SPRING |
| 16 | FRAME | 48 | YOKE RETAINING PIN |
| 17 | THUMB PIECE | 49 | SIDE PLATE SCREW |
| 18 | THUMB PIECE SCREW | 50 | GRIP |
| 19 | HAMMER NOSE | 51 | GRIP SCREW |
| 20 | HAMMER NOSE SPRING | 52 | GRIP RETAINING PIN |
| 21 | HAMMER NOSE BUSHING | 54 | REAR SIGHT |
| 22 | BOLT | 55 | REAR SIGHT SCREW |
| 23 | BOLT SPRING | 56 | FRONT SIGHT |
| 24 | HAMMER ASSEMBLY | 57 | FRONT SIGHT PIN |
| 25 | KEY LOCK | 58 | FRAME LUG |
| 26 | KEY LOCK SPRING | 59 | FIRING PIN RETAINING PIN |
| 27 | KEY LOCK BALL | 69 | CYLINDER DISTANCE BUSHING |
| 28 | KEY LOCK PIN | | |
| 29 | SEAR | | |
| 30 | SEAR SPRING | | |

Rossi Limited Warranty

What Does This Warranty Cover?

This warranty covers any service and repair needed by any product manufactured by Taurus and branded as Rossi, and imported by Braztech, Int'l. or manufactured in the United States by Braztech, Int'l.

How Long Does Coverage Last?

This warranty is of unlimited duration.

What Will We Do?

Braztech will service and/or repair all covered products free of charge.

What Does This Warranty Not Cover?

This warranty does not cover grips, sights, accessories or cosmetic defects after one year, or damage caused by customer abuse at any time.

This express limited warranty is the only warranty on this product. This product is sold "as is" and has no implied warranties of merchantability or fitness for a particular purpose. There are no warranties which extend beyond the description on the face thereof.

How Do I Get Service?

To simplify repair and service Rossi products imported by Braztech International are serviced and repaired by Braztech. Questions regarding the products of either company can be directed to Braztech in Miami, Florida at 305-474-0401, or in writing to: 16175 N.W. 49th Avenue, Miami, FL 33014 in care of Customer Service.

In order to obtain warranty service or repair, describe the problem in writing and send the gun to Braztech at the above address, insured and prepaid with the written description of the problem enclosed.

How Does State Law Apply?

This warranty gives you specific legal rights and you may also have other rights which vary from state to state.

Braztech News

If you desire to receive periodic e-mails relating to new products from us, you may utilize our product enrollment web page at

<http://www.rossiusa.com/product-enrollment.cfm>

Privacy Statement – We do not share, sell or reveal customer information. This information is for our records only. Your e-mail address and purchase information will be kept confidential.

Braztech Service Policy

Before shipment, your firearm was carefully inspected and test fired in order to ensure that it conformed to our specifications and standards. Should your firearm require adjustment or repair, we strongly recommend that you return it to Braztech for factory service. If there is any question regarding the performance of your firearm, please write to our Service Department fully describing all circumstances and conditions involved. If our Service Department makes the determination that your firearm requires factory service, you will be so advised and will be given instructions for the most expeditious handling of your shipment. Our Service Department will give your firearm a complete inspection, and evaluate the problem (s) specified in your letter. If the work required is not covered under the terms of our "Warranty" (when applicable) you will receive an actual cost quotation, not an estimate. Any repair work must be authorized by you, and no work will be done without your expressed approval. Please follow these suggestions to expedite service in the United States of America to return any firearm to us for adjustment or repair.

1. Federal law permits you to return your firearm to the manufacturer for service via common carriers. However, state and local firearms laws vary greatly; you should consult your local prosecuting attorney regarding any restrictive laws in your jurisdiction regarding your shipment or receipt of firearms. With the above in mind, it is strongly recommended that any firearm sent to us for repair be sent through a Federally licensed dealer.

2. All firearms must be shipped to us prepaid. **WE WILL NOT ACCEPT COLLECT SHIPMENTS.**

3. Be sure to enclose a letter stating your name, address and telephone number, serial number, caliber and barrel length of your firearm. Also state nature of trouble experienced or work required. Merely stating "defective" or "repair as necessary" is inadequate information. Be specific and enclose copies of any previous correspondence. Work (other than warranty repair) will bear minimum labor charge of \$10.00.

4. **FIREARMS MUST BE SHIPPED UNLOADED.** Double check the chamber of your firearm before shipping. If firearms are sent to Braztech in a loaded condition, we are required by law to notify the Federal authorities.

5. **DO NOT** include telescopic sights, custom grips, holsters, or other accessories with any firearm shipped to us.

Parts

All firearms require periodic maintenance and inspection which may reveal a need for adjustment or repair. Have your firearm checked by a competent gunsmith annually, even if it seems to be working well, since breakage, improper functioning, undue wear, or corrosion of some components may not be apparent from external examination. If you notice ANY mechanical malfunction, do NOT continue to use the firearm. UNLOAD the firearm and take it to a competent gunsmith immediately.

Similarly, if water, sand, or other foreign matter enters the internal mechanism, the firearm should be dismantled for complete and thorough cleaning. Failure to keep your firearm clean and in proper working order can lead to a potentially dangerous condition.

Our Service Department maintains a full complement of replacement parts for our firearms of current manufacture. Even though most gunsmiths have the knowledge, training and ability to make the necessary repairs to your firearm, the skill and workmanship of any particular gunsmith is totally beyond our control. Should your firearm ever require service, we strongly recommend that you return it to Braztech. Follow the instructions outlined above. Remember, unauthorized adjustments or parts replacement can void your warranty. It is the responsibility of the purchaser to be absolutely certain that any parts ordered from Braztech are of the correct type and are properly fitted and installed by a competent person.

THIS FIREARM IS A PRECISION MECHANISM AND THE IMPROPER FITTING OF PARTS OR IMPROPER MECHANICAL ADJUSTMENT MAY RESULT IN A DANGEROUS MALFUNCTION, DAMAGE TO THE FIREARM, AND POSSIBLE SERIOUS INJURY TO THE SHOOTER OR TO OTHERS.

Therefore, the purchaser and/or installer of parts must accept full responsibility for the correct adjustment of and function of the firearm after such installation has been made or attempted.

Notice:

It is recommended that you record the model number, serial number and date of purchase of your firearm for future reference. Be sure to retain your store receipt and any other documentation that came with your firearm.

Model Number _____

Serial Number _____

Date of Purchase _____

ROSSI

F I R E A R M S

© Copyright 2012 Braztech International, L.C.

The information in this manual is provided as guidelines and directions for the safe use of your firearm. Braztech and/ or TAURUS can not be held responsible for the misuse, illegal or negligent use of our products. We strongly encourage all firearms owners to observe all firearms safety rules. Keep this and all firearms and ammunition away from unsupervised children. Firearms safety is everyone's responsibility.



www.rossiusa.com

A WORD TO THE WISE

MOST GUN ACCIDENTS HAPPEN BECAUSE THE SHOOTER CARELESSLY VIOLATES THE SINGLE MOST IMPORTANT RULE OF SAFE GUN

HANDLING:

**ALWAYS KEEP THE MUZZLE POINTED
IN A SAFE DIRECTION!**

IMPORTANT:

DO NOT DISCARD

**KEEP THIS MANUAL WITH YOUR FIREARM.
UPON CHANGE OF OWNERSHIP TRANSFER
THIS MANUAL WITH THE FIREARM.**

© Copyright 2012 Braztech International, L.C.

Rossi is a registered mark.

The information in this manual is provided as guidelines and directions for the safe use of your firearm. Braztech and/or Taurus can not be held responsible for misuse, illegal or negligent use of our products. We strongly encourage all firearms owners to observe all firearms safety rules. Keep this and all firearms and ammunition away from unsupervised children. Firearms safety is everyone's responsibility.

READ CAREFULLY BEFORE USING YOUR FIREARM