

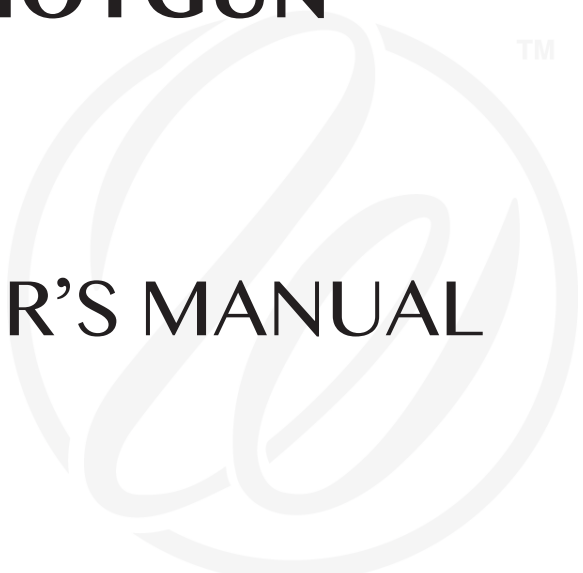


**SA-08**<sup>™</sup>

**SA-459**<sup>™</sup>

**SEMI-AUTOMATIC  
SHOTGUN**

**OWNER'S MANUAL**





# INTRODUCTION

Thank you for buying a Weatherby® firearm, and welcome to the family. We realize that you had many products to choose from and hope you feel as we do, that you purchased the finest quality production firearm on the market today.

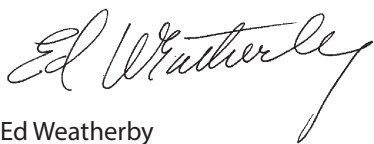
When Roy Weatherby, Sr. started this company in 1945, it was as a means to turn his revolutionary vision of rifle design and cartridge performance into practical realities.

At the time, we're sure that he had little idea that the Weatherby® name would come to be one of the most respected and revered in the firearms industry. That is a level of respect we appreciate, and you have our assurance that it will not be taken for granted.


This Owner's Manual is designed to assist you in learning how to use and care for your Weatherby® shotgun. Please read it very carefully and follow all instructions and safety warnings.

In closing, let us assure you that we are committed to the hunter, shooter, and sportsman and to delivering the uncompromising craftsmanship, performance, and value that you require in all that we do.

Good Shooting!



Ed Weatherby



Adam Weatherby



# - SAFETY - FIRST AND FOREMOST

FIREARMS ARE DANGEROUS WEAPONS, WHICH CAN CAUSE SERIOUS INJURY OR DEATH. WHEN USING ANY FIREARM, SAFETY MUST BE YOUR FIRST AND CONSTANT CONCERN.

## READ AND UNDERSTAND THE FOLLOWING SAFETY RULES

**KNOW YOUR FIREARM.** Before assembling or using your Weatherby® semi-auto shotgun, read and understand the instructions and safety warnings contained in this Owner's Manual in order to learn how to use the firearm safely and correctly.

**ALWAYS TREAT YOUR FIREARM AS IF IT WERE LOADED.** Use the manual safety button as outlined in this manual. *Never move the safety to "FIRE" until YOU are ready to fire.*

**KEEP THE MUZZLE POINTED IN A SAFE DIRECTION.** The safe direction may be "up" on some occasions, and "down" on others. Never point the muzzle toward anything not intended as a target.

**USE ONLY THE CORRECT AMMUNITION FOR YOUR FIREARM.** Be sure to use only the correct gauge and length ammunition for your Weatherby® semi-auto Shotgun as stamped on the left side of the barrel.

**ALWAYS UNLOAD YOUR FIREARM WHEN NOT SHOOTING.** Never transport or store a loaded firearm in a vehicle or building. Unload your firearm before climbing a fence or obstruction, or entering a slippery area.

**MAINTAIN YOUR FIREARM.** Keep the barrel clean and free of obstructions. Clean your firearm regularly and have it inspected periodically to make sure it is mechanically correct and functioning properly. Worn or damaged parts can be dangerous.

**DO NOT MAKE ADJUSTMENTS.** Never make changes or alterations to your firearm. Use only Weatherby® parts. Do not make any adjustments to the trigger, or change the shape or size of the sear or other parts. Repair should be performed by a Weatherby® Authorized Service Center.

**USE THE CORRECT PISTON.** There are two pistons included with this firearm. A "Heavy Load" which is designed for fast or heavy shot loads, and a "Light Load" which is designed for smaller shot or slower velocities. Using Fast or Heavy Shot with a Light Load piston may lead to damage to the gun and/or personal injury.

**MAKE YOURSELF SAFE.** Always wear shooting glasses. When target shooting or plinking, use ear protection also. If your firearm is equipped with a muzzle brake or is "ported", wear ear protection at all times. Never drink alcoholic beverages before or during shooting.

**REMEMBER - FIREARMS SAFETY DEPENDS ON YOU!!**

# INDEX

• Introduction	Page 3
• <b>Safety-First and Foremost</b>	Page 5
• Index	Page 6-7
• General Overview	Page 8
• Manual Safety Operation	Page 9
• Ammunition	Page 9
• Multi-Choke™ Tubes	Page 10
• Removing Choke Tubes	Page 10
• Installing Choke Tubes	Page 11
• Tightening Choke Tubes	Page 11
• Initial Assembly Instructions	Page 12
• Removing Forearm from Receiver Assembly	Page 12
• Assembling Barrel to Receiver	Page 12
• Assembling Forearm to Receiver Assembly	Page 13
• Operating Instructions	Page 14
• Opening the Bolt	Page 14
• Checking for and Clearing Bore Obstructions	Page 15
• Checking the Barrel for Obstructions	Page 15
• Clearing a Bore Obstruction	Page 15
• Closing the Bolt	Page 15
• Loading the Shotgun	Page 16
• Firing the Shotgun	Page 18
• Unloading the Shotgun	Page 18
• Disassembly Instructions	Page 19
• Disassembly of Barrel from Receiver	Page 19
• Disassembly of Trigger Assembly from Receiver	Page 19
• Disassembly of Bolt from Receiver	Page 20
• Removal of Choke Tubes	Page 21
• Disassembly of the Magazine Plug	Page 21
• Cleaning Your Weatherby® Semi-Auto Shotgun	Page 22
• Cleaning the Bore	Page 22
• Cleaning the Outside of the Barrel	Page 23
• Cleaning Choke Tubes	Page 23
• Cleaning the Receiver	Page 24
• Cleaning the Bolt	Page 24
• Cleaning the Slide and Carrier	Page 24

# INDEX

· Cleaning the Magazine	Page 24
· Cleaning the Trigger Assembly	Page 24
· Cleaning the Piston	Page 25
· Cleaning the Forearm and Buttstock	Page 25
· Rust Prevention and Removal	Page 25
• Assembly of Weatherby® Semi-Auto Shotgun	Page 25
· Assembly of Bolt to Receiver	Page 25
· Assembly of Trigger Assembly to Receiver	Page 26
· Assembly of Piston to Magazine Tube	Page 26
· Recommended Loads	Page 26
· Assembly of Magazine Plug to Magazine Tube	Page 27
· Assembly of Barrel to Receiver	Page 27
· Assembly of Forearm to Receiver	Page 27
• Weatherby® Model SA-459	Page 28
· Adjusting The Rear Sight	Page 28
• Storing Your Shotgun	Page 29
• Suggestions for Getting Top Performance from Your Weatherby® Semi-Auto Shotgun	Page 29
• Exploded View Diagram (General Assembly)	Page 30
• Exploded View Diagram (Bolt Group)	Page 31
• Exploded View Diagram (Trigger Group)	Page 32
• Parts List	Page 33
• SA-459 Exploded View Diagram (General Assembly)	Page 36
• SA-459 Parts List	Page 37
• Weatherby® Service Policy	Page 38
• Ten Commandments of Firearms Safety	Page 38
• Exercise Extreme Caution	Page 39

# WEATHERBY® SEMI-AUTOMATIC SHOTGUNS

The Weatherby® semi-auto shotgun is a gas operated semi-automatic shotgun capable of feeding and firing both target and hunting loads up to 3 inch.

With proper care as outlined in this manual, your Weatherby® semi-auto shotgun should give you many years of dependable use and shooting pleasure.

The picture below shows the main parts of the Weatherby® semi-auto shotgun. Please refer to it when reading this manual. It will aid in understanding the terminology.

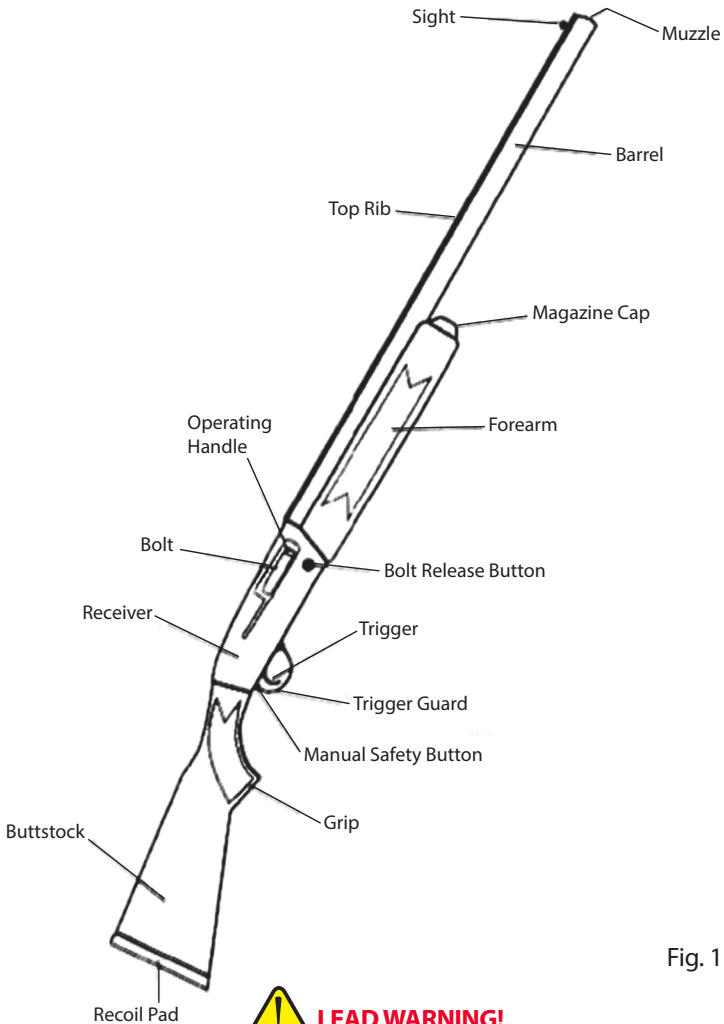


Fig. 1

**LEAD WARNING!**

DISCHARGING FIREARMS IN POORLY VENTILATED AREAS, CLEANING FIREARMS, OR HANDLING AMMUNITION MAY RESULT IN EXPOSURE TO LEAD OR OTHER SUBSTANCES KNOWN TO CAUSE BIRTH DEFECTS, REPRODUCTIVE HARM AND OTHER SERIOUS PHYSICAL INJURY. HAVE ADEQUATE VENTILATION AT ALL TIMES. WASH HANDS THOROUGHLY AFTER EXPOSURE.



# MANUAL SAFETY OPERATION

The manual safety on the Weatherby® semi-automatic shotgun is a button-type safety located on the rear of the trigger guard. When in proper condition and correctly engaged in the “SAFE” position, the manual safety blocks the trigger and prevents accidental discharge under normal usage.



## WARNING!!

NEVER DEPEND ON ANY MECHANICAL SAFETY MECHANISM OR DEVICE TO PREVENT THE DANGERS OF CARELESS HANDLING OR POINTING A FIREARM IN AN UNSAFE DIRECTION.

WHEN MANIPULATING THE MANUAL SAFETY, KEEP ALL FINGERS OUTSIDE THE TRIGGER GUARD. THE SHOTGUN WILL FIRE IF THE TRIGGER IS PULLED WHEN THE SAFETY IS NOT IN THE “SAFE” POSITION.

THE SAFETY SHOULD ALWAYS BE IN THE “SAFE” POSITION EXCEPT WHEN THE SHOTGUN IS INTENDED TO BE FIRED.

NEVER PULL THE TRIGGER WHEN THE SAFETY IS IN THE “SAFE” POSITION.

The manual safety can be moved between the “SAFE” and “FIRE” positions at any time, regardless of whether or not the shotgun is loaded or cocked. **To minimize the possibility of accidental discharge, it is strongly recommended that the safety always be placed in the “SAFE” position except when the shotgun is intended to be fired.**

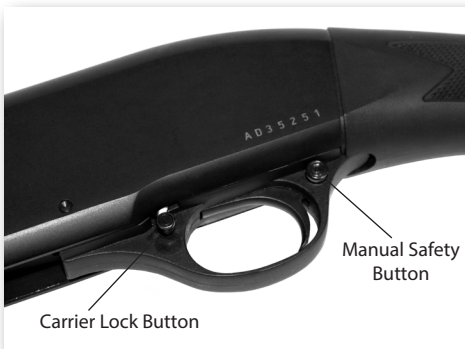


Fig. 2

To engage the manual safety, push the safety button all the way through the trigger guard from left to right with your thumb until it stops and stays in place in the “SAFE” position. (Fig. 2)

To disengage the manual safety, push the safety button through the trigger guard from right to left with your finger until it stops and stays in place in the “FIRE” position (a red mark will be visible on the safety button to the left of the trigger guard.)

# AMMUNITION

Weatherby® semi-automatic shotguns are chambered only for 12 and 20 ga. shells in 2¾ and 3 inch lengths, for which factory-loaded ammunition manufactured in accordance with U.S. industry standards is commercially available. Barrels marked for 3” shot shells can be safely used for both 2¾” and 3” shot shells. Barrels marked for 2¾” can be safely used for 2¾” shot shells only.

Exercise care to assure that you are using only the correct ammunition for your shotgun. Always make certain that the gauge indicated on the shot shell headstamp matches the gauge marked on the barrel of your shotgun, and that the length of the shell is correct for your shotgun.



### **WARNING!!**

USE OF INCORRECT OR OVERLOADED AMMUNITION CAN RESULT IN DEATH OR SERIOUS INJURY AND DAMAGE TO YOUR FIREARM DUE TO EXCESSIVE PRESSURE. EVEN THE STRONGEST FIREARM CAN BE "BLOWN UP" BY EXCESSIVE PRESSURE. USE ONLY FACTORY-LOADED AMMUNITION OF THE CORRECT GAUGE AND LENGTH FOR YOUR SHOTGUN AS MARKED ON THE SHOTGUN'S BARREL.

THE ACCIDENTAL CHAMBERING AND DISCHARGE OF SHELLS OF THE WRONG GAUGE OR LENGTH CAN RESULT IN DAMAGE TO YOUR GUN AND POSSIBLE INJURY TO THE SHOOTER. CARRY ONLY THE PROPER GAUGE AMMUNITION WITH YOU WHEN SHOOTING. A 20 GA. SHELL WILL ENTER A 12 GA. CHAMBER FAR ENOUGH TO LEAVE ROOM FOR A 12 GA. SHELL BEHIND IT. A DAMAGED GUN AND POSSIBLE INJURY TO THE SHOOTER WILL RESULT IF THE BARREL IS FIRED. ALSO, A 3½ INCH SHELL WILL CHAMBER INTO A 3 INCH CHAMBER, BUT THE CRIMP WILL UNFOLD INTO THE FORCING CONE, CAUSING POSSIBLE UNSAFE PRESSURES.

ALWAYS WEAR SHOOTING GLASSES AND HEARING PROTECTORS WHEN SHOOTING.

## **AMMUNITION NOTICE**

**WEATHERBY, INC. SPECIFICALLY DISCLAIMS RESPONSIBILITY FOR ANY INJURY OR DAMAGE WHATSOEVER OCCURRING IN CONNECTION WITH, OR AS A RESULT OF, THE USE OF FAULTY, OR NON-STANDARD, OR "REMANUFACTURED" OR HAND-LOADED OR RELOADED AMMUNITION, OR OF AMMUNITION OTHER THAN FOR WHICH THE FIREARM WAS ORIGINALLY CHAMBERED.**

## **MULTI-CHOKE™ TUBES**

Each new Weatherby® semi-auto shotgun (with the exception of shotguns having rifled barrels for firing slugs) is equipped with interchangeable Multi-Choke™ choke tubes and one choke tube wrench. (Fig. 3) If applicable, one of the choke tubes is installed in the muzzle of the barrel, and the remaining choke tubes are packaged in the shipping box.

Weatherby® Multi-Choke™ tubes are crafted from high grade steel and are certified for steel shot from cylinder bore through modified choke constrictions.

## REMOVING CHOKE TUBES

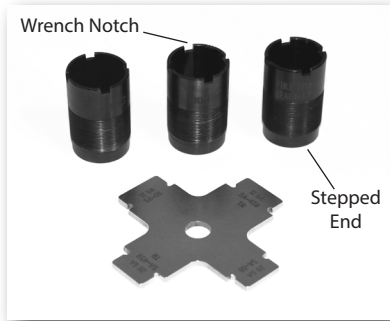


Fig. 3

Choke tubes may be removed with the barrel disassembled from the shotgun or with the barrel assembled to the shotgun by following these simple instructions.

**NOTE:** If removing choke tubes with the barrel removed from the shotgun, begin from instruction no. 3.

**When removing a choke tube from a barrel assembled to the shotgun, keep the muzzle of the shotgun pointed in a safe direction, and keep your fingers out of the trigger guard and away from the trigger at all times.**

1. Move the manual safety button to "SAFE" position (*refer to Manual Safety Operation, page 9*), before removing a choke tube from a barrel assembled to a shotgun.
2. Unload the shotgun (*refer to Unloading the Shotgun, page 18*).
3. Insert the stepped end of the choke tube wrench into the muzzle of the barrel and into the notches in the muzzle end of the choke tube.
4. Turn the choke tube counter-clockwise with the wrench until it emerges from the muzzle sufficiently to grasp with your fingers.
5. Continue turning the choke tube counter-clockwise with your fingers until it is free to be removed from the muzzle.

## INSTALLING CHOKE TUBES

Choke tubes may be installed into a barrel disassembled from the shotgun or with the barrel assembled to the shotgun, by following these simple instructions.

**NOTE:** If installing choke tubes with the barrel removed from the shotgun, begin from instruction no. 3.

**When installing a choke tube into a barrel assembled to the shotgun, keep the muzzle of the shotgun pointed in a safe direction, and keep your fingers out of the trigger guard and away from the trigger at all times.**

1. Move the manual safety button to the "SAFE" position (*refer to Manual Safety Operation, page 9*), before installing a choke tube into a barrel assembled to a shotgun.
2. Unload the shotgun (*refer to Unloading the Shotgun, page 18*).
3. Insert the threaded end of the choke tube into the muzzle of the barrel, and

screw it into the barrel as far as possible with your fingers, turning it in a clockwise direction.

4. Insert the stepped end of the choke tube wrench into the notches in the muzzle end of the choke tube, and continue turning clockwise until the choke tube is seated, tightening snugly.

**CAUTION: To prevent damage to barrel or choke tube threads, do not over-tighten.**

### TIGHTENING CHOKE TUBES

Choke tubes may loosen with repeated recoil, which may result in changes in point of impact or damage to choke tube or barrel threads with extended use. Check and tighten choke tubes frequently -- before, after and during shooting -- as follows:

**Keep the muzzle of the shotgun pointed in a safe direction, and keep your fingers out of the trigger guard and away from the trigger at all times.**

1. Move the manual safety button to the "SAFE" position (refer to *Manual Safety Operation, page 9*).
2. Unload the shotgun (refer to *Unloading the Shotgun, page 18*).
3. Insert the stepped end of the choke tube wrench into the notches in muzzle end of choke tube, and tighten the choke tube snugly, turning clockwise.

**CAUTION: To prevent damage, do not over-tighten.**

IDENTIFYING CHOKE TUBE CONSTRUCTION			
	IMPROVED CYLINDER (IC)	MODIFIED (MOD)	FULL (FULL)
NOTCH ON TOP	IIII	III	I



**WARNING!!** LOOSE CHOKE TUBES MAY CAUSE BORE OBSTRUCTIONS DUE TO "SHAVING" SHOT OR PREVENTING A WAD FROM EXITING THE MUZZLE, WHICH COULD RESULT IN INJURY OR DEATH TO THE SHOOTER OR BYSTANDERS AND DAMAGE TO THE SHOTGUN. TIGHTEN CHOKE TUBES FREQUENTLY -- BEFORE, DURING AND AFTER SHOOTING.

## INITIAL ASSEMBLY INSTRUCTIONS

### REMOVING FOREARM FROM RECEIVER ASSEMBLY

New Weatherby® semi-automatic shotguns are packaged in "take down" condition - the barrel separated from the receiver assembly, with the forearm

attached to the receiver assembly, in the shipping carton in which the shotgun is received by the dealer. The shotgun may also have been stored in “take down” condition. Before assembly of the shotgun, the forearm must be removed from the receiver assembly.

Remove the forearm from the receiver assembly as follows:

1. Grasp the magazine cap with one hand while holding the buttstock or receiver with the other hand.
2. Remove the magazine cap by turning it counter-clockwise until it separates from the magazine tube. (Fig. 4)
3. Grasp the forearm and slide it forward, away from the receiver, until it separates from the magazine tube. (Fig. 5)



Fig. 4



Fig. 5

## ASSEMBLING BARREL TO RECEIVER

**Keep the muzzle of the shotgun pointed in a safe direction, and keep your fingers out of the trigger guard and away from the trigger at all times.**

1. Visually examine the barrel to make sure there is no shot shell in the chamber or obstruction in the bore, and all surfaces are free of dirt and excess oil.
2. Remove the forearm from the receiver assembly (*refer to Removing Forearm from Receiver Assembly, page 12*).
3. Place the piston on the magazine tube (*refer to Assembly of Piston to Magazine Tube, page 26*).
4. Apply a very light coat of gun oil to the “O” ring inside the gas port cylinder. (Fig. 6) This oil will help with the assembly, preventing wear to the “O” ring.
5. Grasp the receiver and buttstock assembly with one hand, while grasping the barrel with your other hand.
6. With the bolt in the closed (fully forward) position, align the barrel shroud on chamber end of the barrel with the receiver and the barrel gas port cylinder with the magazine tube. (Fig. 7)
7. Insert the barrel shroud into the receiver until the barrel stops against the

receiver, with the gas port cylinder fitting over the magazine tube.

8. Pull the bolt handle half way back while applying rearward pressure on the barrel to fully seat the barrel into the receiver.

9. Assemble the forearm to the receiver assembly (*refer to Assembling Forearm to Receiver Assembly, page 13*).

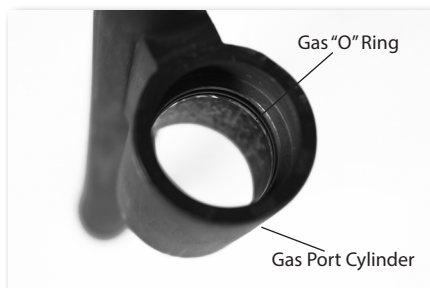


Fig. 6



Fig. 7



**WARNING!! IF AMMUNITION IS PRESENT IN THE BARREL'S CHAMBER, THE RECEIVER LOADING PORT OR THE MAGAZINE, THE SHOTGUN WILL BE LOADED, COCKED AND READY TO FIRE BY RELEASING THE BOLT AND PULLING THE TRIGGER WITH THE SAFETY "OFF" (IN THE "FIRE" POSITION).**

## ASSEMBLING FOREARM TO RECEIVER ASSEMBLY

The forearm may be assembled to the receiver assembly with the barrel installed, or without the barrel installed for storage in "take-down" condition.

**NOTE:** If installing the forearm with the barrel removed from the shotgun, begin from instruction no. 4.

When assembling the forearm to the receiver assembly with the barrel also installed, keep the muzzle of the shotgun pointed in a safe direction, and keep your fingers out of the trigger guard and away from the trigger at all times.

1. Move the manual safety button to the "SAFE" position (*refer to Manual Safety Operation, page 9*).
2. Unload the shotgun (*refer to Unloading the Shotgun, page 18*).
3. Align the forearm with the barrel in front of the magazine tube.
4. Slide the forearm rearward over the magazine tube until the magazine tube protrudes through the front of the forearm and the forearm is seated against the forearm latch. The forearm must set completely against the forearm latch to prevent breakage. (Fig. 8 & 9)
5. While applying rearward pressure on the forearm, screw the magazine cap onto the magazine tube until tight.



**WARNING:** IF THE BARREL IS ALSO INSTALLED AND AMMUNITION IS PRESENT IN THE BARREL'S CHAMBER, THE RECEIVER LOADING PORT OR THE MAGAZINE, THE SHOTGUN WILL BE LOADED, COCKED AND READY TO FIRE BY RELEASING THE BOLT AND PULLING THE TRIGGER WITH THE SAFETY "OFF" (IN THE "FIRE" POSITION).



Fig. 8



Fig. 9

## OPERATING INSTRUCTIONS

### OPENING THE BOLT

**Keep the muzzle of the shotgun pointed in a safe direction, and keep your fingers out of the trigger guard and away from the trigger at all times.**

1. Move the manual safety button to the "SAFE" position (*refer to Manual Safety Operation, page 9*).
2. Unload the gun (*refer to Unloading the Shotgun, page 18*).
3. Lock the carrier by sliding the carrier lock button rearward. (Fig. 2)

**NOTE:** The bolt only locks open when the carrier is locked and no ammunition is in the magazine.

4. While resting the butt-pad against your thigh, grasp the shotgun forearm firmly with one hand.
5. With the other hand grasp the operating handle and pull the bolt rearward until the bolt locks into the open position.

### CHECKING FOR AND CLEARING BORE OBSTRUCTIONS

The barrel of your shotgun should always be checked for obstructions before assembly, before loading and **immediately** following any occurrence in the field which might result in mud, dirt or other debris entering the bore.



**WARNING!! NEVER ATTEMPT TO CHECK FOR OR CLEAR A BORE OBSTRUCTION BY LOADING A SHOT SHELL INTO THE CHAMBER OF THE BARREL AND FIRING! IF THERE IS A BORE OBSTRUCTION THIS WILL CAUSE EXCESSIVE PRESSURES WHICH MAY RESULT IN DEATH OR SERIOUS INJURY AND DAMAGE TO YOUR SHOTGUN.**

## **CHECKING THE BARREL FOR OBSTRUCTIONS**

**Keep the muzzle of the shotgun pointed in a safe direction, and keep your fingers out of the trigger guard and away from the trigger at all times.**

1. Move the manual safety button to the "SAFE" position (*refer to Manual Safety Operation, page 9*).
2. Unload the shotgun (*refer to Unloading the Shotgun, page 18*).
3. Disassemble barrel from receiver (*refer to Disassembly of Barrel from Receiver, page 19*).
4. Visually check the bore for obstructions by looking through the barrel from the breech end through the muzzle.

## **CLEARING A BORE OBSTRUCTION**

1. Push a shotgun bore cleaning tool through the bore from the breech end until the end of tool exits the muzzle.
2. If the obstruction cannot be easily cleared, contact a Weatherby® Authorized Service Center or your local gunsmith.

## **CLOSING THE BOLT**

**Keep the muzzle of the shotgun pointed in a safe direction, and keep your fingers out of the trigger guard and away from the trigger at all times.**

1. Move the manual safety button to the "SAFE" position (*refer to Manual Safety Operation, page 9*).
2. Hold the shotgun with one hand grasping the forearm firmly.
3. With the other hand press the bolt release button to permit the bolt to move forward. (Fig. 1)
4. Visually check the manual safety button to make certain it is in the "SAFE" position (*refer to Manual Safety Operation, page 9*).

**CAUTION: Do not depress the bolt release button without a barrel installed; this will cause damage to the receiver. To avoid injury, keep hands and fingers away from the loading port when releasing the bolt from the locked position.**





**WARNING!!** IF A SHOT SHELL IS IN THE RECEIVER LOADING PORT WHEN THE BOLT RELEASE BUTTON IS DEPRESSED AND THE MANUAL SAFETY IS NOT IN THE "SAFE" POSITION, THE SHOTGUN IS NOW READY TO FIRE. DO NOT TOUCH THE TRIGGER UNTIL YOU ARE READY TO FIRE.

## LOADING THE SHOTGUN



### **WARNING!!**

USE OF INCORRECT OR OVERLOADED AMMUNITION CAN RESULT IN DEATH OR SERIOUS INJURY AND DAMAGE TO YOUR FIREARM DUE TO EXCESSIVE PRESSURE. EVEN THE STRONGEST FIREARM CAN BE "BLOWN UP" BY EXCESSIVE PRESSURE. USE ONLY FACTORY-LOADED AMMUNITION OF THE CORRECT GAUGE AND LENGTH FOR YOUR SHOTGUN AS MARKED ON THE SHOTGUN'S BARREL.

THE ACCIDENTAL CHAMBERING AND DISCHARGE OF SHELLS OF THE WRONG GAUGE CAN RESULT IN DAMAGE TO YOUR GUN AND POSSIBLE INJURY TO THE SHOOTER. CARRY ONLY THE PROPER GAUGE AMMUNITION WITH YOU WHEN SHOOTING. A 20 GA. SHELL WILL ENTER A 12 GA. CHAMBER FAR ENOUGH TO LEAVE ROOM FOR A 12 GA. SHELL BEHIND IT. A DAMAGED GUN AND POSSIBLE INJURY TO THE SHOOTER WILL RESULT IF THE BARREL IS FIRED. ALSO, A 3½-INCH SHELL WILL CHAMBER INTO A 3-INCH CHAMBER, BUT THE CRIMP WILL UNFOLD INTO THE FORCING CONE, CAUSING POSSIBLE UNSAFE PRESSURES.

ALWAYS WEAR SHOOTING GLASSES AND HEARING PROTECTORS WHEN

### **AMMUNITION NOTICE**

**WEATHERBY, INC. SPECIFICALLY DISCLAIMS RESPONSIBILITY FOR ANY INJURY OR DAMAGE WHATSOEVER OCCURRING IN CONNECTION WITH, OR AS A RESULT OF, THE USE OF FAULTY, OR NON-STANDARD, OR "REMANUFACTURED" OR HAND-LOADED OR RELOADED AMMUNITION, OR OF AMMUNITION OTHER THAN FOR WHICH THE FIREARM WAS ORIGINALLY CHAMBERED.**

## LOADING THE MAGAZINE

**Keep the muzzle of the shotgun pointed in a safe direction, and keep your fingers out of the trigger guard and away from the trigger at all times.**

1. Move the manual safety button to the "SAFE" position (*refer to Manual Safety Operation, page 9*).
2. Open the bolt (*refer to Opening the Bolt, Page 14*), and visually check to make sure no shell is in the receiver ejection port.
3. Close the bolt (*refer to Closing the Bolt, page 15*).

4. Insert desired number of shot shells of the proper gauge/length (*refer to Ammunition, page 9*) into the magazine through the loading port by depressing the bolt release button then pushing each shell forward fully into the magazine until it is held in place by the carrier latch. (Fig. 10)



Fig. 10

## FEEDING A SHELL FROM THE MAGAZINE INTO THE CHAMBER

**Keep the muzzle of the shotgun pointed in a safe direction, and keep your fingers out of the trigger guard and away from the trigger at all times.**

1. Visually check the manual safety button to make sure it is in the “SAFE” position (*refer to Manual Safety Operation, page 9*).
2. Slide the carrier lock button rearward, to release a shell onto the carrier from the magazine and lock the carrier (*refer to Manual Safety Operation, page 9*).
3. Cycle the bolt to permit feeding of the shell from the carrier into the chamber.

**⚠ WARNING!! IF THE MANUAL SAFETY IS NOT IN THE “SAFE” POSITION, THE SHOTGUN IS NOW READY TO FIRE. DO NOT TOUCH THE TRIGGER UNTIL YOU ARE READY TO FIRE.**

## SINGLE-LOADING THE CHAMBER WITHOUT SHELLS IN THE MAGAZINE.

**Keep the muzzle of the shotgun pointed in a safe direction, and keep your fingers out of the trigger guard and away from the trigger at all times.**

1. Move the manual safety button to the “SAFE” position (*refer to Manual Safety Operation, page 9*).
2. Open the bolt of the shotgun (*refer to Opening the Bolt, page 14*).
3. Drop a shot shell of the proper size (*refer to Ammunition, page 9*) directly into the ejection port, with the crimped end forward.

4. Press the bolt release button (*refer to Closing the Bolt, page 15*) to allow the bolt to close and feed the shell into the chamber.



**WARNING!!** IF THE MANUAL SAFETY IS NOT IN THE "SAFE" POSITION, THE SHOTGUN IS NOW READY TO FIRE. DO NOT TOUCH THE TRIGGER UNTIL YOU ARE READY TO FIRE.

## SINGLE-LOADING THE CHAMBER WITH SHELLS IN THE MAGAZINE.

**Keep the muzzle of the shotgun pointed in a safe direction, and keep your fingers out of the trigger guard and away from the trigger at all times.**

1. Move the manual safety button to the "SAFE" position (*refer to Manual Safety Operation, page 9*).
2. Open and hold the bolt of the shotgun back with one hand while dropping one shot shell of the proper size (*refer to Ammunition, page 9*) directly into the receiver loading port, with the crimped end forward.
3. Release the bolt handle to allow the bolt to close and feed the shell into the chamber.



**WARNING!!** IF THE MANUAL SAFETY IS NOT IN THE "SAFE" POSITION, THE SHOTGUN IS NOW READY TO FIRE. DO NOT TOUCH THE TRIGGER UNTIL YOU ARE READY TO FIRE.

## FIRING THE SHOTGUN

**Pulling the trigger fires the shotgun when a shot shell is in the chamber.**

1. With a shot shell in the chamber of the barrel, and keeping the muzzle of the shotgun pointed in a safe direction and your fingers out of the trigger guard and away from the trigger, move the manual safety button to the "FIRE" position (*refer to Manual Safety Operation, page 9*).
2. Hold the recoil pad snugly to your shoulder and carefully point the muzzle of the shotgun at your intended target.
3. Squeeze (pull) the trigger with steadily increasing pressure until the shotgun fires.



**WARNING!!** DO NOT TOUCH THE TRIGGER UNTIL YOU ARE ACTUALLY READY TO FIRE THE SHOTGUN, OR AN UNINTENDED DISCHARGE MAY OCCUR, POSSIBLY RESULTING IN DEATH OR INJURY TO A BYSTANDER, OR DAMAGE TO AN UNINTENDED TARGET.

**CAUTION: If another shot shell is in the magazine it will automatically be fed into the chamber and will fire upon the next pull of the trigger.**

4. Unless an immediate second shot is intended, immediately:
  - a. Remove your finger from the trigger;
  - b. Unload the shotgun (*refer to Unloading the shotgun, page 18*).

## **UNLOADING THE SHOTGUN**

**Keep the muzzle of the shotgun pointed in a safe direction, and keep your fingers out of the trigger guard and away from the trigger at all times.**

***ALWAYS UNLOAD YOUR SHOTGUN IMMEDIATELY AFTER YOU FINISH SHOOTING.***

1. Move the manual safety button to the "SAFE" position (*refer to Manual Safety Operation, page 9*).
2. To unload a shell from the chamber, pull the operating handle rearward to extract the shell.
3. To unload the magazine, lock the carrier by sliding the carrier lock button rearward. (Fig. 2)
4. Cycle the bolt to feed the next shell into the chamber.
5. Press the carrier lock button again. Cycle the bolt to extract the shell from the chamber and feed the next shell into the chamber.
6. Repeat Step 5 until the magazine is empty and the bolt locks open.
7. Visually confirm that there are no shot shells remaining in the magazine or chamber.

# **DISASSEMBLY INSTRUCTIONS**

## **DISASSEMBLY OF BARREL FROM RECEIVER**

**Keep the muzzle of the shotgun pointed in a safe direction, and keep your fingers out of the trigger guard and away from the trigger at all times.**

1. Unload the shotgun (*refer to Unloading the Shotgun, page 18*).
2. Close the bolt by depressing the bolt release button.
3. Unscrew the magazine cap by turning it in a counter clock-wise direction until easily detached.
4. Remove the forearm by sliding it forward (toward the muzzle), until clear of

the magazine tube.

5. Remove the barrel by grasping firmly and pushing forward (in the direction of the muzzle) until the barrel shroud is clear of the receiver.

## DISASSEMBLY OF TRIGGER ASSEMBLY FROM RECEIVER

**CAUTION: Make sure the hammer is in the cocked position prior to removing the trigger assembly from the receiver. This is achieved by pulling the bolt to the rear then releasing it. Have the safety in the "ON" ("SAFE") position while cleaning the trigger assembly. Do not pull the trigger while the trigger assembly is outside of the receiver.**

1. Unload the Shotgun (refer to *Unloading the Shotgun, page 18*) and disassemble the barrel from the receiver (refer to *Disassembly of Barrel from Receiver, page 19*).

2. Move the manual safety button to the "SAFE" position (refer to *Manual Safety Operation, page 9*).

3. Pull bolt to rear then ease it forward to make sure the hammer is cocked.

**CAUTION: Do not close a locked open bolt by depressing the bolt release button without a barrel installed; this will cause damage to the receiver.**



Fig. 11



Fig. 12

4. With a hammer and punch push the receiver pin through the receiver until the pin is out far enough to be grasped by hand, and remove the pin from the receiver. (Fig. 11)

5. Using one or two fingers push the trigger assembly forward approximately  $\frac{1}{4}$ ", then pull the trigger assembly straight out from the receiver.

## DISASSEMBLY OF BOLT FROM RECEIVER

1. Remove forearm (refer to *Removing Forearm from Receiver Assembly, page 12*) and barrel (refer to *Disassembly of Barrel from Receiver, page 19*).

2. Remove the gas piston from magazine tube by sliding it forward until it is free from the tube.
3. Push the slide assembly approximately 1" rearward (towards the buttstock), and hold. (Fig. 13)
4. Remove the bolt handle by grasping with fingers and pulling outward, making sure to hold back the slide from moving forward. (Fig. 12)
5. Move the slide along the magazine tube until the bolt is outside of the receiver. The bolt will then detach from the slide.

**NOTE:** If the piston is removed or comes off the magazine tube, make sure it is placed back onto the magazine tube in the proper direction. The piston will work only if the large outside diameter of the piston is placed onto the magazine tube first.



Fig. 13

## REMOVAL OF CHOKE TUBES

Remove Multi-Choke™ choke tubes as described, (*refer to Removing Choke Tubes, page 10*).

## DISASSEMBLY OF THE MAGAZINE PLUG

Each Weatherby® semi-auto shotgun is originally equipped with the magazine plug installed to restrict the magazine capacity to 2 shot shells, in compliance with the Federal Migratory Bird Treaty Act, federal migratory bird hunting regulations and some state laws. (Fig. 16) Removal of this magazine plug will result in a maximum magazine capacity of 5-2 ¾" shot shells or 4-3" shot shells.



**WARNING!!** TAKING A WEATHERBY® SEMI-AUTO SHOTGUN SA-08 INTO THE FIELD WITHOUT THE MAGAZINE PLUG INSTALLED MAY RESULT IN CITATION AND/OR PROSECUTION FOR VIOLATION OF FEDERAL MIGRATORY BIRD TREATY ACT AND/OR FEDERAL REGULATIONS OR STATE LAW.

1. Unscrew the magazine cap by turning it in a counter clock-wise direction until easily detached. (Fig. 4)
2. Remove magazine plug blocker from the magazine tube by placing the index finger under the protruding radiused of the magazine plug. (Fig. 15)
3. Push the magazine plug blocker into the magazine tube approximately 3/8".
4. Rotate the magazine plug blocker upward until a side of the magazine plug blocker protrudes above the magazine tube. (Fig. 15)
5. With the other hand grasp the magazine plug to pull it out of the magazine tube.
6. Screw the magazine cap on to the magazine tube by turning it in a clock-wise direction until seated.

Further disassembly of the shotgun is not recommended. If further disassembly is required, contact a Weatherby® Authorized Service Center or your local gunsmith.



Fig. 14



Fig. 15

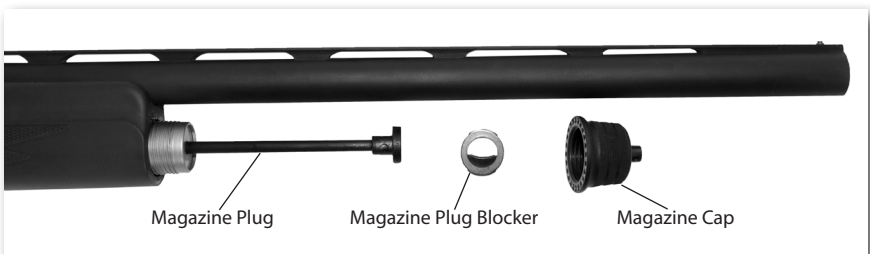


Fig. 16

# CLEANING YOUR WEATHERBY® SEMI-AUTO SHOTGUN

Any firearm requires regular cleaning and periodic maintenance. To assure safe and reliable functioning of your Weatherby® semi-auto shotgun, it is very important that you clean it immediately after each use, and periodically during extended storage periods, to remove powder residue, dirt, dust and excess lubricant, and to prevent rust. During cleaning, inspect components to determine whether they are in proper working order.

A basic cleaning kit consists of proper-sized cleaning rods, bore brush(es) and patches, gun cleaning solvent, gun lubricant, and lint-free cloths. The cleaning rod must have a tip with a slot into which patches can be inserted. Additionally, tooth brushes, cotton swabs and pipe cleaners are very handy tools for cleaning away dirt in hard to reach places.

To properly clean your shotgun, it must first be disassembled (*refer to Disassembly Instructions, page 19*), the parts and components cleaned as discussed below, then reassembled (*refer to Assembly of Weatherby Semi-Auto Shotgun, page 25*).

**CAUTION: Apply solvents and lubricants properly and sparingly. Do not spray or apply directly on ammunition. Solvents and lubricants may affect the propellant, causing it not to ignite, but the energy from the primer may be sufficient to propel the propellant, wad and shot column into the bore of the barrel, causing an obstruction, and resulting in damage to the shotgun and serious injury to the shooter and bystanders upon firing a subsequent shot shell.**

## CLEANING THE BORE

1. Apply gun cleaning solvent to a bore cleaning brush of the proper size attached to the cleaning rod.
2. Push the brush all the way through the barrel bore several times from the chamber end.
3. Insert the brush into the muzzle of the barrel only far enough to encounter the threads for the choke tube, and twist it several times.
4. With a clean patch inserted in the tip attached to the cleaning rod, push the rod all the way through the barrel bore from the chamber end until the cloth emerges from the muzzle. Remove the dirty patch and withdraw the rod.
5. Repeat Step 4 as many times as needed until the patch is clean as it emerges from the muzzle.
6. Using a clean patch or lint-free cloth wrapped around the tip of your finger or similarly shaped object, remove all solvent from the muzzle and from the choke tube threads inside the barrel bore.
7. Insert a patch saturated with gun lubricant into the cleaning rod tip and



it through the bore from the chamber end. Remove the patch and withdraw the rod.

8. Insert a dry, clean patch into the cleaning rod tip and push it through the bore from the chamber end, to remove excess lubricant. Remove the patch and withdraw the rod.

9. Using a clean patch or lint-free cloth wrapped around the tip of your finger or similarly shaped object, apply a light coat of gun lubricant to the choke tube threads and muzzle of the barrel bore.



**WARNING!! EXCESS LUBRICATION IN THE BORE OR CHAMBER OF ANY FIREARM MAY CREATE EXCESSIVE CHAMBER PRESSURES OR A PARTIAL BORE OBSTRUCTION, RESULTING IN POSSIBLE DAMAGE TO THE FIREARM AND SERIOUS INJURY TO THE SHOOTER AND BYSTANDERS UPON FIRING. BE SURE ALL EXCESS LUBRICANT HAS BEEN REMOVED.**

## **CLEANING THE OUTSIDE OF THE BARREL**

1. Using a patch or clean cloth saturated with cleaning solvent, wipe down all accessible surfaces of the barrel, rib and barrel ring. (A clean tooth brush may be handy for cleaning the corners and recesses of the rib and barrel ring.)

2. With a clean, dry, lint-free cloth, remove all cleaning solvent.

3. Using a patch or clean cloth, apply a light coat of gun lubricant to the outside surfaces of the barrel, rib and barrel ring, being careful to remove any excess lubricant.

## **CLEANING CHOKE TUBES**

1. Apply gun cleaning solvent to a bore cleaning brush of the proper size attached to the cleaning rod.

2. Push the brush all the way through the choke tube several times.

3. With a clean patch inserted in the tip attached to the cleaning rod, push the rod all the way through the choke tube until the patch emerges from the other end. Remove the dirty patch and withdraw the rod.

4. Repeat step 3 as many times as needed until the patch is clean as it emerges from the choke tube.

5. Insert a patch saturated with gun lubricant into the cleaning rod tip and push it through the choke tube. Remove the patch and withdraw the rod.

6. Insert a dry, clean patch into the cleaning rod tip and push it through the choke tube to remove excess lubricant. Remove the patch and withdraw the rod.

7. Using a patch or clean cloth saturated with cleaning solvent, wipe down the

outside surfaces of the choke tube. (A clean tooth brush may be handy for cleaning the threads.)

8. With a clean, dry lint-free cloth, remove all cleaning solvent.

9. Using a patch or clean cloth, apply a light coat of gun lubricant to the outside surfaces of the choke tube, being careful to remove any excess lubricant.

### **CLEANING THE RECEIVER**

1. Using a small lint-free cloth, clean the inside and outside of the receiver with gun-cleaning solvent and dry thoroughly with a clean cloth.

2. With a clean cloth or patch, apply a light coat of gun lubricant to all accessible surfaces of the receiver.

### **CLEANING THE BOLT**

1. Using a small lint-free cloth, clean the inside and outside of the bolt assembly with gun-cleaning solvent; and dry thoroughly with a clean cloth. (A clean toothbrush may be handy for cleaning the recesses of the bolt)

2. With a clean cloth or patch, apply a light coat of gun lubricant to all accessible surfaces of the bolt.

### **CLEANING THE SLIDE AND CARRIER**

1. Using a small lint-free cloth, clean the inside and outside of the slide and carrier with gun-cleaning solvent; and dry thoroughly with a clean cloth. (A clean tooth brush may be handy for cleaning some the areas of the slide and carrier)

2. With a clean cloth or patch, apply a light coat of gun lubricant to all accessible surfaces of the slide and carrier.

### **CLEANING THE MAGAZINE**

1. Using a lint-free cloth, clean the outside of the magazine tube with gun-cleaning solvent; and dry thoroughly with a clean cloth.

2. With a clean cloth or patch, apply a light coat of gun lubricant to the inside and outside surface of the magazine tube.

### **CLEANING THE TRIGGER ASSEMBLY**

**CAUTION: Make sure the hammer is in the cocked position prior to removing the trigger assembly from the receiver. This is achieved by pulling the bolt to the rear then releasing it. Make sure the safety is in the "ON" ("SAFE") position while cleaning the trigger assembly. Do not pull the trigger while the trigger assembly is outside of the receiver. If the hammer is mistakenly released while outside of the shotgun, push it back towards the trigger assembly until it reengages the trigger, prior to assembly back into the receiver.**

1. Using a small lint-free cloth, clean the outside of the trigger assembly and with a clean tooth brush, brush the top surface of the trigger assembly mechanism with gun-cleaning solvent; and dry thoroughly with a clean cloth.
2. With a clean cloth or patch, apply a light coat of gun lubricant to all accessible surfaces of the trigger assembly.

### **CLEANING THE PISTON**

1. Using a small lint-free cloth and clean tooth brush, clean the inside and outside of the piston with gun-cleaning solvent; and dry thoroughly with a clean cloth.
2. With a clean cloth or patch, apply a light coat of gun lubricant to all accessible surfaces of the piston.

### **CLEANING THE FOREARM AND BUTTSTOCK**

Usually, wiping the forearm and buttstock with a clean, dry cloth or a silicon cloth is all that is necessary. If you have been hunting or shooting in wet weather, allow the buttstock to dry thoroughly before storage.

### **RUST PREVENTION AND REMOVAL**

During normal maintenance, after a thorough cleaning, allow 2-3 hours at room temperature, for all metal parts to dry completely. Then apply a liberal amount of high grade gun oil to all metal parts, wiping off any excess with a clean dry cloth. If rusting does occur it may only be surface rust due to excessive moisture. You may be able to remove it by using a plastic bristle gun cleaning brush and gun cleaning solvent. If you are unable to remove rust on your shotgun, please contact a Weatherby Authorized Service Center or your local gunsmith. Immediate attention to this problem is imperative to prevent irreparable rust damage.

**DO NOT ALLOW RUST TO GO UNTREATED!**

## **ASSEMBLY OF WEATHERBY® SEMI-AUTO SHOTGUN**

### **ASSEMBLY OF BOLT TO RECEIVER**

**NOTE:** It is recommended to assemble the bolt to the receiver with the trigger assembly removed from the receiver.

1. Assemble the bolt assembly onto the slide arm assembly. (Fig. 17)



Fig. 17

2. Place the cylinder of the slide arm assembly over the magazine tube and move the slide toward the receiver, aligning the bolt with the receiver as the bolt enters the receiver opening.

3. Slide the bolt into the receiver aligning the link with the recoil spring plunger cup. (Fig. 18)

4. Once the bolt is far enough into the receiver, push the bolt handle into the bolt.



Fig. 18

### ASSEMBLY OF TRIGGER ASSEMBLY TO RECEIVER

1. While pushing and holding the bolt release button push the trigger assembly into the receiver until the trigger assembly is flush with the bottom of the receiver. Push the trigger assembly reward to seat the trigger assembly against the receiver, aligning the trigger pin hole in the trigger assembly and the receiver.

2. Press the receiver pin into the receiver until flush with the receiver side.

### ASSEMBLY OF PISTON TO MAGAZINE TUBE

**NOTE:** The Weatherby® semi-auto shotgun comes with 2 pistons. By having the two different pistons the operator can switch between heavy load and light load ammunition, allowing the action to cycle correctly with different ammunition. To determine the best piston for the ammunition, it is recommended to use the heavy load piston first, and if there is a problem with the gun cycling correctly change to the light load piston.



**⚠ WARNING!!** A HIGH VELOCITY LOAD SHOULD NEVER BE USED WITH A LIGHT LOAD PISTON. THE USE OF A HIGH VELOCITY LOAD WITH A LIGHT LOAD PISTON MAY LEAD TO DAMAGE TO THE GUN AND/OR PERSONAL INJURY. ALWAYS WEAR SHOOTING GLASSES AND HEARING PROTECTION WHEN SHOOTING.

SA-08	MINIMUM LOAD REQUIREMENT	VELOCITY
12 Gauge	1 1/8 oz. loads	1300 FPS
20 Gauge	7/8 oz. loads	1300 FPS
SA-459	MINIMUM LOAD REQUIREMENT	VELOCITY
12 Gauge	1 1/4 oz. loads	1330 FPS
20 Gauge	1 oz. loads	1300 FPS

1. Place the piston onto the magazine tube by sliding the piston over the forward end of the magazine tube, making sure the largest outside diameter of the piston goes onto the magazine tube first. (Fig. 7)

## **ASSEMBLY OF MAGAZINE PLUG TO MAGAZINE TUBE**

1. Unscrew the magazine cap by turning it in a counter clock-wise direction until easily detached. (Fig. 4)
2. Remove magazine plug blocker from the magazine tube by placing the index finger under the protruding radiuses of the magazine plug blocker. (Fig. 15)
3. Push the magazine plug blocker into the magazine tube approximately 3/8”.
4. Rotate the magazine plug blocker upward until a side of the magazine plug blocker protrudes above the magazine tube. (Fig. 15)
5. With the other hand grasp the magazine plug blocker to pull it out of the magazine tube.
6. Place the magazine plug into the magazine tube small end first until the second diameter on the magazine plug contacts the magazine spring retainer. (Fig. 16)
7. Place the magazine plug blocker on top of the magazine plug.
8. Push the magazine plug blocker and magazine plug into the magazine tube until the magazine plug blocker contacts the end of the magazine tube.
9. Rotate one corner of the magazine plug blocker into the magazine tube.
10. Press the remainder of the magazine plug blocker into the magazine tube until the complete magazine plug blocker is inside the magazine tube.
11. Remove your finger and the magazine plug blocker will stay inside the magazine tube. (Fig. 14)

## **ASSEMBLY OF BARREL TO RECEIVER**

Assemble the barrel as described, (*refer to Assembling Barrel to Receiver, page 12*).

## **ASSEMBLY OF FOREARM TO RECEIVER**

Assemble the forearm to the receiver, (*refer to Assembling Forearm to Receiver Assembly, page 13*).

# **SHIM KIT INSTALLATION INSTRUCTIONS**

Your Weatherby® semi-auto shotgun comes with a stock drop shim (SSP) installed, with four additional shims to adjust drop and cast included in the small parts box. (Fig. 19) The shims allow the user to adjust the angle of the buttstock left to right (cast) and up and down (drop).

Each drop spacer is marked with a molded in label: 50, 55, SSP, and 65. The 50 and 55 shims are designed to reduce the amount of drop, effectively angling the stock upward. The 65 shim is designed to increase the amount of drop by angling the stock downward.



Fig. 19



Fig. 20

The spacer marked “CAST SPACT” will adjust for cast. When looking at the gun from butt to muzzle, the direction that the buttstock is angled will be referred to as either “cast-on” or “cast-off”. Cast-on refers to a buttstock that is angled to the left, typically preferred by left-handed shooters. Cast-off refers to a buttstock that is angled to the right, typically preferred by right-handed shooters. To adjust the stock for cast-on, place the CAST SPACT spacer so that the thin side is on the left side when looking down the gun from butt to muzzle. To adjust the stock for cast-off, place the spacer so that the thin side is on the right.

**NOTE:** Only one drop shim should be used at a time, but can be installed along with the CAST-SPACT shim.

### INSTALLING DROP AND CAST SHIMS

1. Coat the end of a Phillips-head screwdriver with lubricant and insert it into the slits in the end of the recoil pad, engaging and removing the screws. (Fig. 20)
2. Using a 6mm hex head driver, remove the buttstock bolt, buttstock lock washer and flat washer that are housed in the interior of the stock.
3. Remove the buttstock from the recoil spring tube and set aside. (Fig. 21)
4. Remove the neutral spacer, marked “SSP” from the recoil spring tube.
5. Install the appropriate spacer(s) and reinstall the buttstock on the recoil spring tube.



Fig. 21

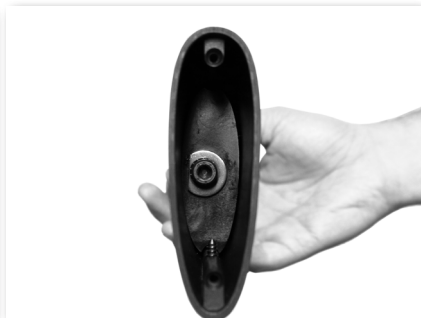


Fig. 22

6. Adding drop and/or cast shims will move the position of the recoil spring tube in relation to the buttstock bolt hole. Position the buttstock so that the bolt is able to thread into the recoil spring tube. (Fig. 22) Tighten the buttstock bolt until the stock is secured tightly to the receiver, while taking care not to cross-thread the bolt.

7. Reinstall the recoil pad. Insert the Phillips-head screwdriver into the slits at the end of the recoil pad and tighten the screws until the recoil pad is secured tightly in place.

## WEATHERBY® MODEL SA-459™ SEMI-AUTOMATIC SHOTGUN



Mechanically the 12 and 20 gauge SA-459 is the same as the 12 and 20 gauge SA-08. The differences are in the appearance of the buttstock, barrel, choke tube, sights and bolt handle. While the shape of these parts may be different, the operation remains essentially the same. These instructions will guide you through these minor differences.

**Buttstock** – The buttstock of the SA-459 is a synthetic stock which has a recoil absorbing pistol style grip and recoil pad.

**Barrel** – The SA-459 barrel is a shorter version of the SA-08 barrel and has a M-16 style front sight with a light gathering fiber optic bead.

**CAUTION: DO NOT USE THE FRONT SIGHT AS A HANDLE WHEN INSTALLING AND REMOVING CHOKE TUBES OR FOR ANY OTHER REASON. USING THE FRONT SIGHT AS A HANDLE COULD POSSIBLY DAMAGE THE FRONT SIGHT.**

**Choke tube** – The SA-459 barrel has been threaded to accept the “Beretta Mobil Choke” style choke tube. Your SA-459 has been equipped with an extended and ported choke tube which can be screwed in and out of the muzzle with the supplied wrench.

**Rear sight and scope rail** – The receiver has been drilled and tapped and a Picatinny style scope rail has been mounted to it. Mounted on this scope rail is a LPA style, large aperture, peep sight. This rear sight can be removed and a scope mounted to the rail using Weaver style scope rings.

**Bolt handle** – The SA-459 comes equipped with an hour glass style extended bolt handle that is interchangeable with the SA-08 model of the same gauge.

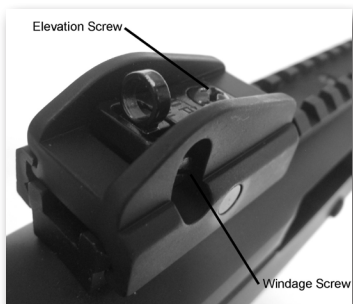


Fig. 19

### ADJUSTING THE REAR SIGHT OF YOUR WEATHERBY® SA-459 SHOTGUN

The rear sight of your SA-459 shotgun can be adjusted for both windage and elevation. A screw located on the top of the sight is for elevation adjustment. Turning this screw clockwise will lower the point of impact on the target. Turning this screw counterclockwise will raise the point of impact on the target. (Fig. 19)

The screw located on the right side of the sight is for windage adjustment. (Fig. 19) Turning this screw clockwise will move the point of impact to the right. Turning this screw counterclockwise will move the point of impact to the left.



## STORING YOUR SHOTGUN

Your Weatherby® semi-auto shotgun may be stored fully assembled (*refer to Assembly of Weatherby Semi-Auto Shotgun, page 25*), or in “take down” condition.

If storing your shotgun fully assembled, release the pressure on the hammer spring as follows:

1. Make certain the shotgun is not loaded by following unloading procedures (*refer to Unloading the Shotgun, Page 18*).
2. Close the bolt (*refer to Closing the Bolt, page 15*)
3. Pointing the muzzle of the shotgun in a safe direction, pull the trigger.

Do not store your shotgun in a leather case, scabbard or foam lined gun case. Leather and foam can attract moisture and cause rusting.

For your safety, and the safety of others, store your shotgun with a lock or other safety device properly installed; and store your ammunition in a separate, locked location.

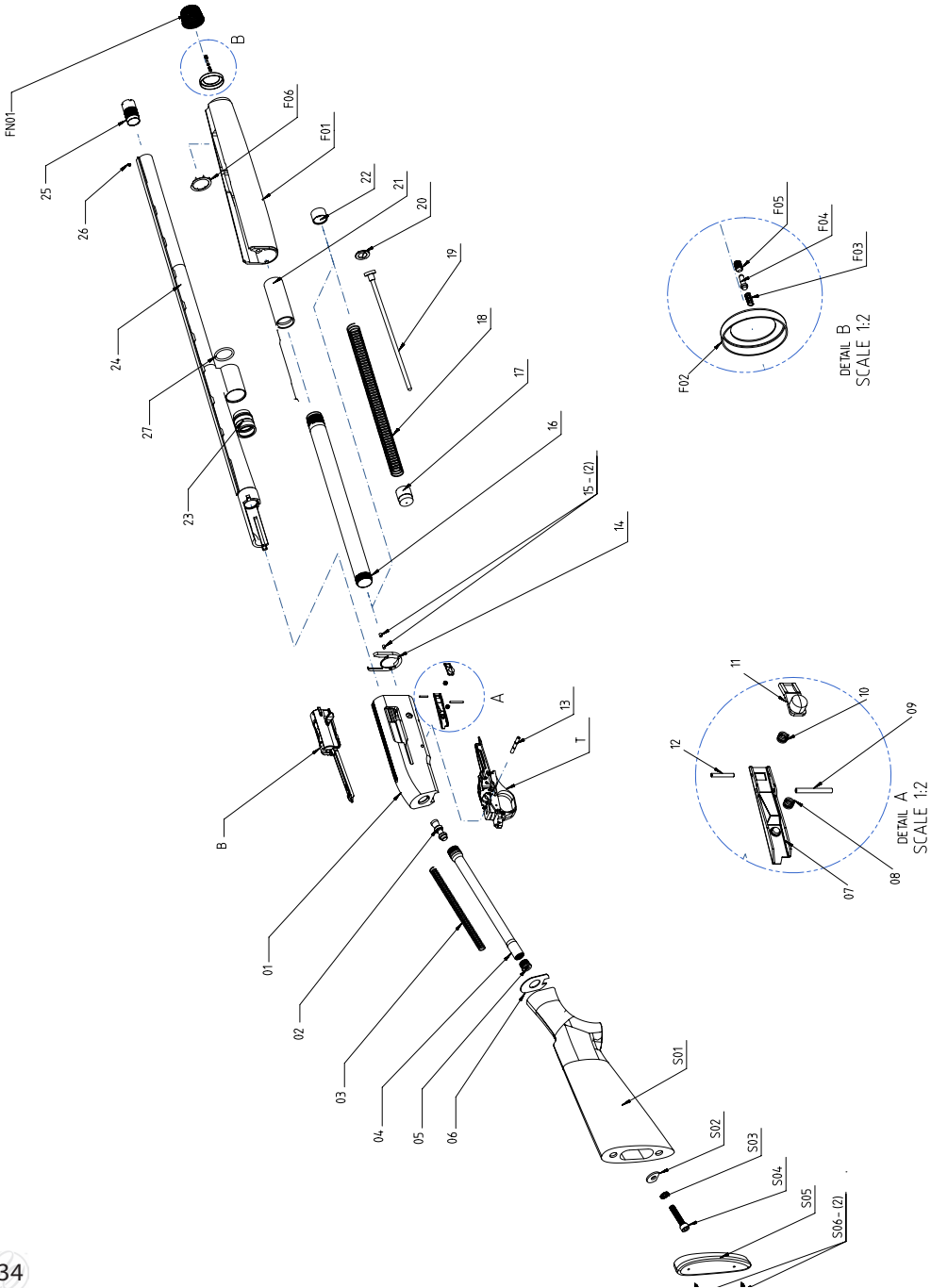
## SUGGESTIONS FOR GETTING TOP PERFORMANCE FROM YOUR WEATHERBY® SEMI-AUTO SHOTGUN

1. Check and tighten choke tubes frequently -- before, during and after shooting. Choke tube threads may loosen with repeated recoil, which may result in changes in point of impact or damage to choke tube or barrel threads with extended use.
2. The accuracy of any firearm can vary depending upon the brand and type of ammunition used in it. If your shotgun does not exhibit the consistent point of impact and shot pattern you expect, you should try several brands and types of ammunition, after referring to point 1, above, before concluding that it is “inaccurate”.

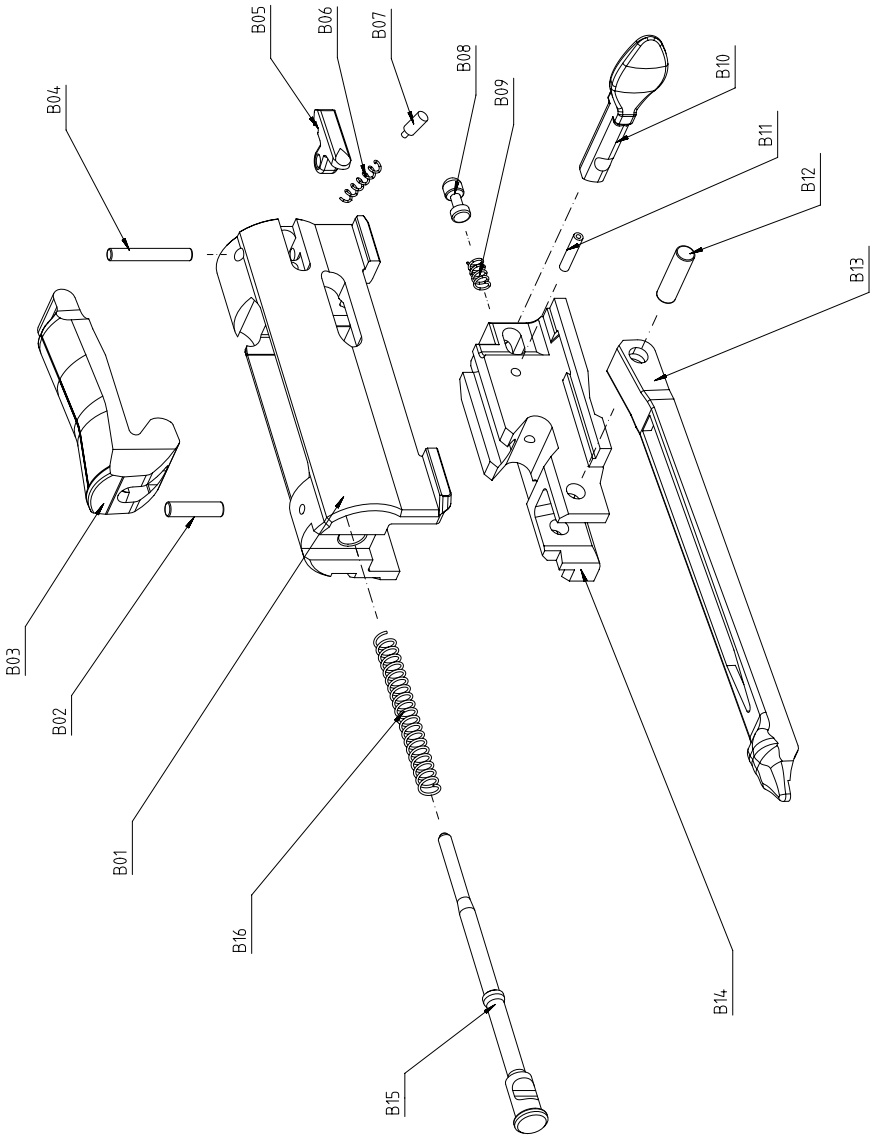
**DO NOT ALTER THE STOCK IN ANY WAY. Once a stock has been altered, it cannot be reworked by our Service Department or a Weatherby® Authorized Service Center.**

3. Consult the factory before returning any product for inspection or repair.

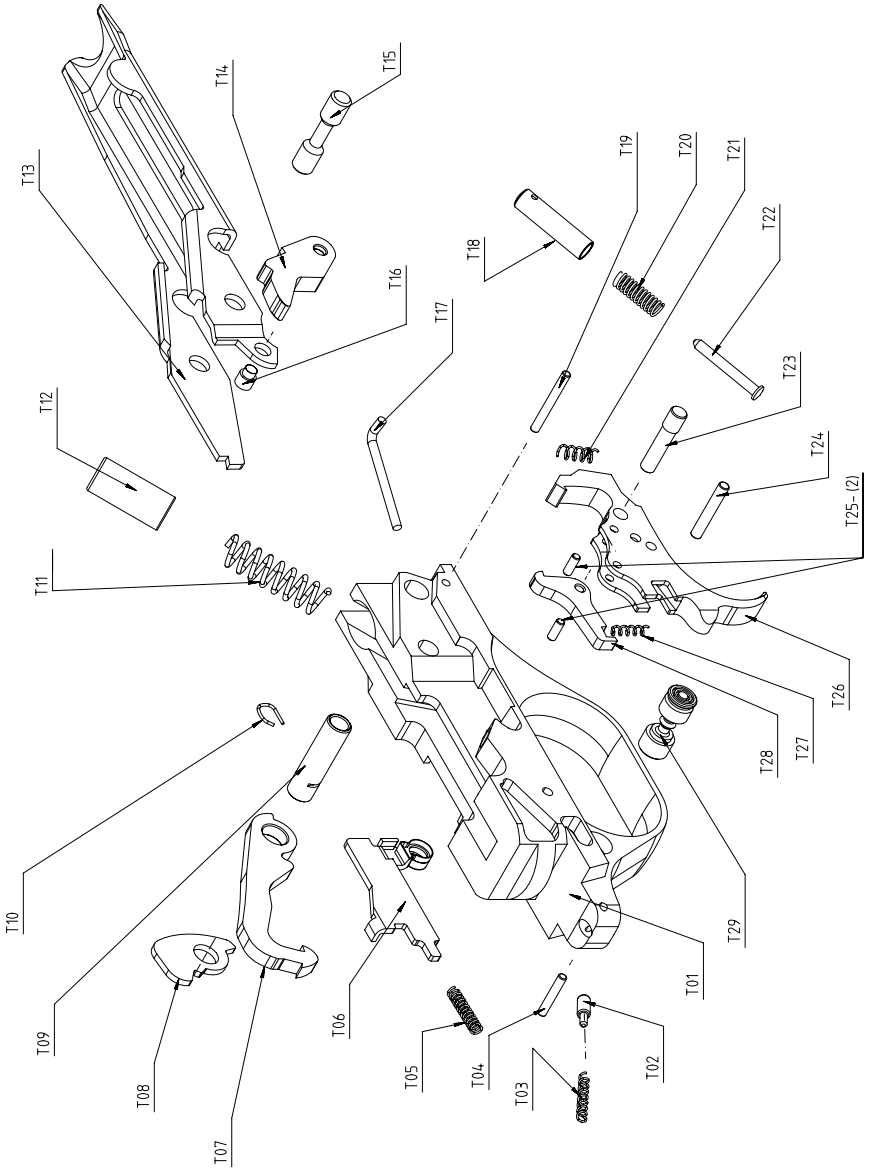
# SA-08 EXPLODED VIEW DIAGRAM DELUXE AND SYNTHETIC MODELS



# SA-08 EXPLODED VIEW DIAGRAM BOLT GROUP



# SA-08 EXPLODED VIEW DIAGRAM TRIGGER GROUP



## PARTS LIST

1	RECEIVER
2	CAP, RECOIL SPRING
3	SPRING, RECOIL
4	RECOIL SPRING TUBE
5	NUT, STOCK RETAINING
6	SHIM KIT
7	CARTRIDGE LATCH
8	SPRING, CARTRIDGE LATCH
9	PIN, CARTRIDGE LATCH
10	SPRING, BOLT RELEASE BUTTON
11	BOLT RELEASE BUTTON
12	PIN, BOLT RELEASE BUTTON
13	PIN, RECEIVER
14	FOREEND LATCH
15	SCREW, FOREEND LATCH
16	MAGAZINE TUBE
17	FOLLOWER, MAGAZINE SPRING
18	SPRING, MAGAZINE
19	MAGAZINE PLUG
20	MAGAZINE PLUG BLOCKER
21	SLIDE ARM
22	RETAINER, MAGAZINE SPRING
23	PISTON
24	BARREL ASSEMBLY
25	CHOKE TUBE
26	BRASS BEAD, FRONT SIGHT
27	O RING, GAS CYLINDER
B	BOLT ASSEMBLY
B01	BOLT
B02	PIN, FIRING PIN RETAINING
B03	LOCKING BLOCK
B04	PIN, EXTRACTOR
B05	EXTRACTOR
B06	SPRING, EXTRACTOR

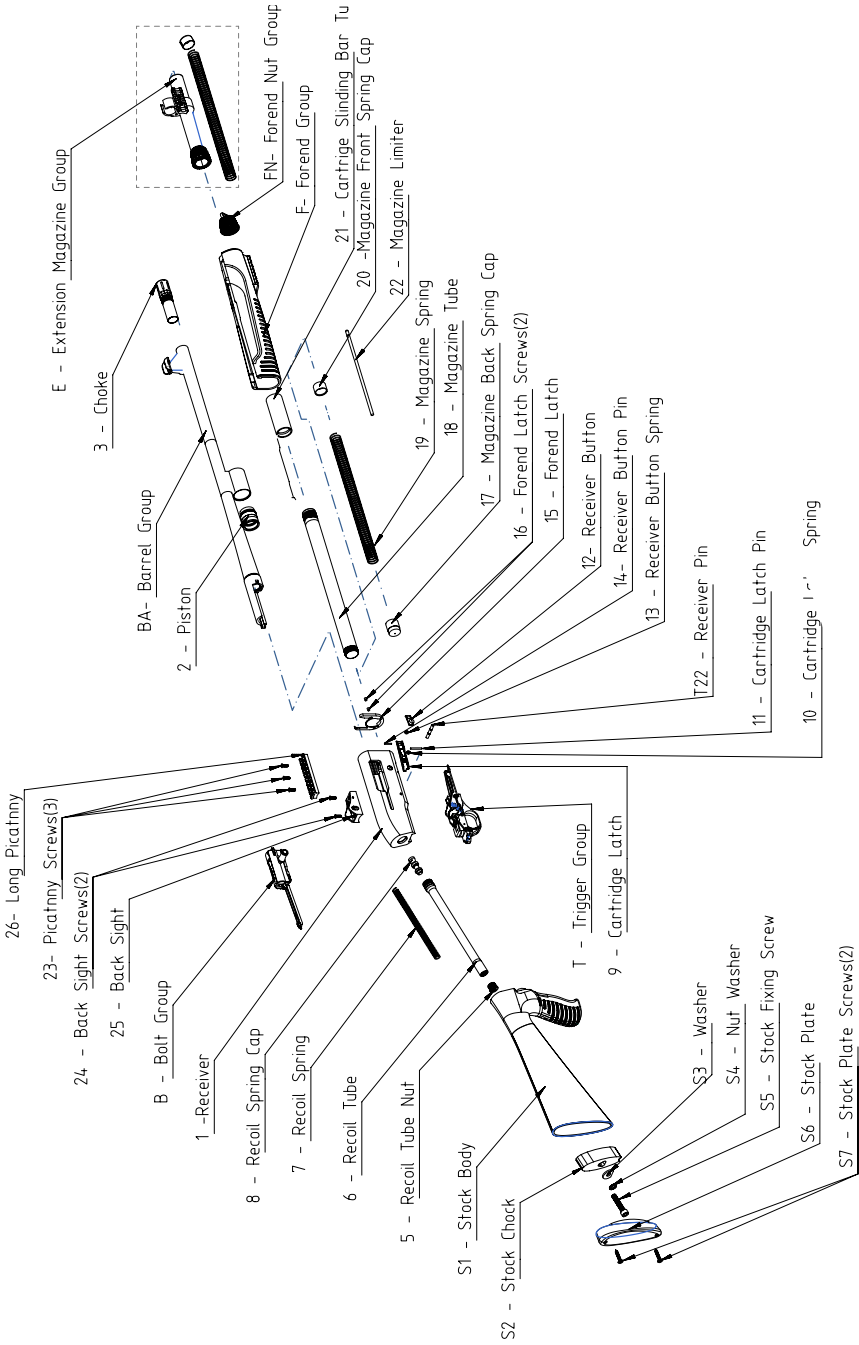
## PARTS LIST

B07	DETENT, EXTRACTOR SPRING
B08	DETENT, BOLT HANDLE
B09	SPRING, BOLT HANDLE DETENT
B10	BOLT HANDLE
B11	PIN, BOLT HANDLE DETENT SPRING RETAINING
B12	PIN, LINK
B13	LINK
B14	SLIDE, BOLT BODY
B15	FIRING PIN
B16	SPRING, FIRING PIN
F01	FOREND
F02	FOREND PLATE, MAG CAP DETENT (Wood model Only)
F03	SPRING, MAGAZINE CAP DETENT
F04	DETENT, MAGAZINE CAP
F05	SCREW, MAGAZINE CAP DETENT
F06	FOREND PINNED PLATE (Wood model Only)
FN01	CAP, MAGAZINE
FN02	C - CLIP, MAGAZINE CAP, SLING SWIVLE STUD (Synthetic Model Only)
FN03	SLING SWIVLE STUD, MAG CAP (Synthetic Model Only)
S01	STOCK
S02	WASHER, STOCK RETAINING
S03	WASHER, STOCK RETAINING, LOCK
S04	SCREW, STOCK RETAINING
S05	RECOIL PAD
S06	SCREW, RECOIL PAD
S07	WASHER, RECOIL PAD, SCREW
S08	SLING SWIVEL STUD, STOCK (Synthetic Only)
S09	STOCK INSERT, (Synthetic Only)
T	TRIGGER ASSEMBLY
T01	TRIGGER GUARD
T02	DETENT, SAFETY

## PARTS LIST

T03	SPRING, SAFETY DETENT
T04	PIN, SAFETY SPRING RETAINING
T05	SPRING, CARRIER LOCK BUTTON
T06	CARRIER LOCK BUTTON
T07	HAMMER
T08	CARRIER LATCH
T09	HAMMER TUBE
T10	HAMMER TUBE "D" RING
T11	SPRING, HAMMER
T12	CAP, HAMMER SPRING
T13	CARRIER
T14	LIFTER, CARRIER LATCH
T15	PIN, CARRIER
T16	PIN, CARRIER LIFTER LATCH
T17	PIN, CARRIER LATCH CONNECTOR, "L SHAPE"
T18	CAP, CARRIER LIFTER LATCH, SPRING
T19	PIN, HAMMER STOP
T20	SPRING, CARRIER LIFTER LATCH
T21	SPRING, TRIGGER
T22	PIN, CARRIER LIFTER LATCH, SPRING GUIDE
T23	PIN, TRIGGER PIVOT
T24	PIN, TRIGGER STOP
T25	PIN, DISCONNECTOR
T26	TRIGGER
T27	SPRING, DISCONNECTOR
T28	DISCONNECTOR
T29	SAFETY

# SA-459 EXPLODED VIEW DIAGRAM SYNTHETIC MODEL







## **WEATHERBY® SERVICE POLICY**

Weatherby® is a name that has been synonymous with quality firearms for over 50 years. All Weatherby® firearms are manufactured of the finest materials and have been thoroughly inspected and tested in every phase of production.

Weatherby® does not warrant against any type of defect to the firearm that Weatherby® did not cause, including but not limited to damage or defects arising out of:

1. Failure to provide proper care and maintenance,
2. Accidents, abuse, or misuse,
3. Barrel obstruction,
4. Hand loaded, reloaded, or improper ammunition,
5. Unauthorized adjustments, repairs, or modifications, or
6. Normal wear and tear.

Should any Weatherby® firearm require service or repair under this service policy, it must be delivered transportation prepaid to a Weatherby® Authorized Service Center (names and addresses available upon request). The product must be accompanied by a proof of original purchase and a letter explaining the problem. It should also be insured by the owner at the time of shipment, as Weatherby® does not accept responsibility for damage or loss in transit. Weatherby® will pay all charges to return the product to the owner if it is accepted for service or repair without charge under the provisions of this service policy. Weatherby® also reserves the right to repair or replace any product at our sole discretion.

The following warranty statement is granted to the original purchaser with proof of purchase exclusively, new firearms from Weatherby® shall be free from defects in materials and workmanship.

### **SA-08/SA-459**

5 Year Warranty

Original Purchaser

Proof of Purchase Required

## **TEN COMMANDMENTS OF FIREARMS SAFETY**

Prevention is the solution to hunting and shooting casualties. Every hunting and shooting accident that has occurred could have been prevented. Most such accidents happen as a result of people ignoring basic firearms safety rules. Prevention involves knowing and obeying those basic safety rules. Responsible, knowledgeable, and safe hunters and shooters will learn, remember and follow these simple rules:

1. Treat every firearm with the same respect due a loaded firearm.
2. Control the direction of your firearm's muzzle. Carry your firearm safely, keeping the safety on until ready to shoot. Keep your finger off the trigger until ready to shoot.

3. Identify your target and what is beyond it. Know the identifying features of the game you hunt or the targets you intend to shoot.
4. Be sure the barrel and action are clear of obstructions and that you have only ammunition of proper size for the firearm you are carrying.
5. Whenever not in use, keep your firearm unloaded and store all ammunition in a separate location.
6. Never point a firearm at anything you do not want to shoot. Avoid all horseplay with a firearm.
7. Never climb a fence or tree, or jump a ditch or log, with a loaded firearm. Never pull a firearm toward you by the muzzle.
8. Never shoot at a flat hard surface or water. During target practice, be sure your backstop or shot-fall area is adequate.
9. Store firearms and ammunition separately beyond the reach of children and careless adults.
10. Avoid alcoholic beverages or other mood-altering drugs before or while shooting.

## **EXERCISE EXTREME CAUTION**

### **Heed and follow these additional gun handling warnings whenever using any firearm**

- Be sure the barrel is clear of any obstruction before loading. Make it a habit to check the barrel every time before reloading.
- Never place a loaded gun into a vehicle or lean the gun against any object. The gun should be emptied and placed into a case when not in use.
- Keep the safety on at all times. Move the safety to the “FIRE” position only when you are sure that a shot is imminent.
- While loading or unloading, make sure the gun is pointed in a safe direction. Keep your finger off the trigger while operating the action.
- Treat every gun as if it is loaded - it may be!
- If you do not thoroughly understand the proper use and care of your gun, seek the advice of someone you know is competent.
- Do not abuse your hunting privileges. Be respectful of others and other people’s property.



# WARNING

CHILDREN ARE ATTRACTED TO AND CAN OPERATE FIREARMS THAT CAN CAUSE SEVERE INJURIES OR DEATH.

PREVENT CHILD ACCESS BY ALWAYS KEEPING GUNS LOCKED AWAY AND UNLOADED WHEN NOT IN USE. IF YOU KEEP A LOADED FIREARM WHERE A CHILD OBTAINS AND IMPROPERLY USES IT, YOU MAY BE FINED OR SENT TO PRISON.



# ADVERTENCIA

A LOS NIÑOS LOS ATRAEN LAS ARMAS DE FUEGO Y LAS PUEDEN HACER FUNCIONAR. ELLOS PUEDEN CAUSARSE LESIONES GRAVES Y LA MUERTE.

EVITE QUE LOS NIÑOS TENGAN ACCESO A LAS ARMAS DE FUEGO GUARDÁNDOLAS SIEMPRE CON LLAVE Y DESCARGADAS CUANDO NO LAS ESTÉ UTILIZANDO. SI USTED TIENE UN ARMA DE FUEGO CARGADA EN UN LUGAR EN QUE UN NIÑO TIENE ACCESO A ELLA Y LA USA INDEBIDAMENTE, LE PUEDEN DAR UNA MULTA O ENVIARLO A LA CARCEL.

PRINTED JULY 2020

WEATHERBY, INC

1550 YELLOWTAIL DR. SHERIDAN, WY 82801 (307) 675-7840

[www.weatherby.com](http://www.weatherby.com)