

---

# MODEL: APPEAL SEMIAUTOMATIC RIFLE



## WARNINGS AND INSTRUCTION MANUAL

MANUAL FOR

APPEAL 22LR  
APPEAL 22WMR  
APPEAL 17HMR

**Important!**

**Read these Warnings and Instructions before using firearm!**

© Copyright 2011

**WARNING!**  
DO NOT USE +P Ammo or  
High Velocity High Pressure  
Ammunition  
(factory or handloaded)



**MODEL: APPEAL Semi Auto Rifle**  
**EUROPEAN AMERICAN ARMORY, CORP..**  
**1426 king Street**  
**Cocoa, FL 32922**  
**Phone: (321) 639-4842**

**READ THIS MANUAL FOR USSG APPEAL BEFORE**  
**HANDLING YOUR FIREARM**

The APPEAL is a semi-automatic rifle combining a powerful cartridge, 5 or 10 round magazine capacity, excellent design, anatomical grip, scope mount, and special features for accurate shooting.

**CALIBERS: .22 LR, 22WMR , 17HMR**

**FINISHES: BLUE**

**FOR YOUR SAFETY AND THE SAFETY OF OTHERS**, this owner's manual contains important warnings and safety procedures which must be understood **BEFORE** using this firearm. Read the entire manual and if you do not understand any part it or the operation of your pistol, stop and seek professional firearms instructions. You can get a copy of this manual from **EUROPEAN AMERICAN ARMORY, CORP..** on request.

Record the serial number of your firearm # \_\_\_\_\_

and a description of it: \_\_\_\_\_

Make a copy of this manual, proof of purchase/sales record for safekeeping in a secure safe or fireproof container. Such proof is necessary if the firearm is stolen or for warranty repair.

**Specifications of the BAIKAL APPEAL Rifle**

<b>Caliber</b>	<b>22LR , 22 WMR, 17HMR</b>
<b>Length</b>	<b>26.25 inches</b>
<b>Weight</b>	<b>120 ounces</b>
<b>Barrel</b>	<b>18 inches</b>
<b>Magazine Capacity Full Size</b>	<b>10 plus 1 cartridges</b>



## **WARNING**

**\*\*YOU RISK PERSONAL INJURY OR DEATH  
BY HANDLING THIS FIREARM\*\***

**BEFORE HANDLING THIS FIREARM, READ, UNDERSTAND AND FOLLOW THE INSTRUCTIONS IN THIS MANUAL. ALWAYS KEEP THIS MANUAL WITH THE FIREARM. IF YOU LEND, GIVE OR SELL THIS FIREARM, BE SURE THE MANUAL GOES WITH IT. IF THERE IS ANYTHING YOU DO NOT UNDERSTAND, SEEK ADVICE FROM SOMEONE QUALIFIED IN SAFE HANDLING OF FIREARMS.**

**\*THIS FIREARM IS DESIGNED ONLY FOR TARGET OR COMPETITION AND SHOULD ALWAYS BE TRANSPORTED UNLOADED IN ITS CASE. DO NOT USE THIS FIREARM FOR CARRY, DUTY OR DEFENSIVE PURPOSES.\***

### **TYPE OF AMMUNITION TO BE USED**

**It is suggested that high quality commercially manufactured ammunition be used in this firearm. Other types of ammunition may have feeding or extraction problems. Some factory ammunition works better than others and you should stick with that brand you find works well in your semiautomatic rifle. Avoid military surplus or hot loaded ammo. The use of reloaded, +P, high pressure or hand loaded ammunition will void the warranty.**

### **NOTICE**

**RIFLES ARE CLASSIFIED AS FIREARMS OR DANGEROUS WEAPONS and are sold by EUROPEAN AMERICAN ARMORY, CORP.. Corporation with the specific understanding that we are not responsible in any manner whatsoever for their safe handling or resale under local laws and regulations.**

**EUROPEAN AMERICAN ARMORY, CORP.. shall not be responsible in any manner whatsoever for malfunctioning of the firearm, for physical injury or for property damage resulting in whole or in part from (1) intentional or negligent discharge, (2) improper or careless handling, (3) unauthorized modifications, (4) defective, improper, hand-loaded, or reloaded ammunition, (5) corrosion and/or lack of proper maintenance (6) neglect, or (7) other influences beyond our direct and immediate control. This limitation applies regardless of whether liability is asserted on the basis of contract, negligence or strict liability (including any failure to warn). Under no circumstance shall EUROPEAN AMERICAN ARMORY, CORP.. Corporation be liable for incidental or consequential damages, such as loss of use of property, commercial loss and loss of earnings or profits.**



## **SAFETY PROCEDURES**

1. We recommend that you get competent firearms instruction in safe handling before using this firearm. Please ask your dealer. All guns are extremely dangerous if carelessly handled or used. Remember that the gun user is the primary “safety” and to depend on any mechanical devices is to be only half safe.

**EVEN WITH THE MAGAZINE REMOVED, THIS FIREARM WILL STILL FIRE IF A ROUND (LIVE BULLET) IS IN THE CHAMBER AND THE TRIGGER IS PULLED AND THE MANUAL SAFETY IS OFF.**

2. NEVER carry this rifle with a cartridge loaded in the chamber. Remember the rifle will still fire without a magazine in the firearm. We recommend that you keep the Safety button in the safe position / engaged and always make sure the chamber is unloaded until you are ready to fire.

3. NEVER point this rifle at anything that is not your intended target, even if this rifle is unloaded. When loading, cleaning, unloading or handling, always be sure the muzzle is pointed in a safe direction and always keep your fingers off the trigger.

4. NEVER assume any gun is unloaded. Before handling this rifle, remove the magazine and retract the bolt assembly to check for any ammo in the firing chamber. See Unloading Instructions and then unload any ammunition. Make sure you know that this or any rifle is fully unloaded before handling or displaying it. When handling any firearm, keep your fingers away from the trigger at all times until you intend to fire the weapon.

5. WARNING: The actual firearm does not contain any lead; however, it does fire ammunition containing lead or lead compounds known to the State of California to cause cancer, birth defects and/or reproductive toxicity. Those who discharge a firearm, stand near someone who discharges a firearm or cleans firearms are hereby warned of the hazards and dangers presented by lead and lead compounds and should take protective health measures.

### **AMMUNITION WARNING**

**Old, Hot-loaded and/or re-loaded ammunition may be dangerous. Because of the poor or nonexistent quality control standards among some companies or people who make reloaded ammunition and the dangers of overloads and underloads (squib loads) which may occur, we recommend that only good quality new factory ammunition be fired in our firearms. [If you prepare your own handloads, do NOT exceed recommended pressures in line with those generated by standard factory loads as manufactured by Remington, Winchester, Federal, PMC or other reputable companies.] Do NOT use +P Ammo or High Velocity High Pressure Ammunition (factory or handloaded). Old ammunition may not fire with sufficient force to expel the projectile from the barrel.**



## **-WARNINGS- READING THESE SAFETY RULES WILL SAVE YOUR LIFE OR THE LIFE OF SOMEONE ELSE**

Get instructions from a competent firearms instructor before using this or any firearm. Learn from a professional how to handle, load, unload, operate, fire and care for your gun.

NEVER PLAY with your firearm. It is not a toy but a very dangerous weapon that can cause serious personal injury or death.

Always keep the gun pointed in a safe direction. Treat every gun as if it is loaded... all the time. NEVER point any firearm (loaded or unloaded) at any person or anything you do not intend to shoot. Always keep your gun unloaded until ready to use and make sure that it is unloaded before cleaning.

Keep your finger OFF the trigger until you are actually aiming at the target and ready to shoot.

Never rely on a gun's "safety" to protect you from unsafe gun handling. A safety is only a mechanical device, not a substitute for common sense and gun safety procedures.

Never leave a gun unattended or where it could fall and fire.

Store guns and ammunition separately beyond the reach of children. Make sure that they are properly secured so untrained individuals and children will be denied access to your guns and ammo.

Test your gun's operation and safeties ONLY at a shooting range while the firearm is pointed in a safe direction.

Know your target and what is beyond. Ask yourself what your bullet will hit if it misses the target or passes through the intended target. Remember, a fired bullet can travel over a mile (including a ricochet) and is capable of going through walls.

Guns and alcohol or drugs do not mix. Don't take any alcoholic beverages and/or drugs before or during shooting activities.

Never pull a gun toward you by the muzzle. Don't climb a tree, cross a ditch or fence with a loaded gun.

Always empty guns before entering a house, car, truck, boat, RV, camp or any building.

When receiving a gun, always open the action and check to make sure it is unloaded.

NEVER accept anyone's word that a gun is "unloaded" or "empty". You should immediately open the action and check to make sure it is unloaded.



## **-WARNINGS- READING THESE SAFETY RULES WILL SAVE YOUR LIFE OR THE LIFE OF SOMEONE ELSE**

Be careful with ALL ammunition. Even “blank” cartridges are deadly at close range due to the muzzle blast. Make sure your ammunition is in new and in good clean condition. Do NOT oil or grease ammo as this may damage the cartridge primer. Do NOT tamper with or alter the standard factory ammunition.

Keep firearms unloaded when not actually in use. Load the gun only when on the range preparing to fire and unload it before leaving the range.

Never put your hand over the muzzle of a gun.

ALWAYS WEAR protective shooting glasses and hearing protection when using firearms.

Spectators should be at least 10 feet behind and away from the shooter while the shooter is loading, shooting and unloading. Spectators should wear protection for hearing and sight loss and they should avoid distracting those firing their weapons.

Never carry a rifle in your pocket, purse or tucked in a belt or waistband. Use a rifle case or a proper holster with safety flap or strap.

Never drop your gun. If you do drop it, unload it and check it for proper function before using it again.

Don't alter or modify your gun. Don't try to change your gun's trigger pull, because it may affect sear engagement and thereby cause accidental firing.

Do not remove any internal safety or safety device on the firearm. Safety mechanisms are designed to protect you from injury or death.

Do maintain and keep your gun clean. Keep in a dry place away from other metals and water. If your gun shows sign of corrosion or improper operation, have it serviced by a competent gunsmith.

Keep the muzzle pointed in a safe direction when loading and unloading your gun. Never point the muzzle at anyone.

Never shoot at hard flat surfaces or water....bullets ricochet.

If a gun fails to fire when the trigger is pulled, keep it pointed down range at the target for 30 seconds. Sometimes slow primer ignition will cause a “hang fire” and the cartridge will go off after a short pause. If it still fails to fire, keep muzzle pointed in safe direction and avoid exposure to the breech, as you attempt to unload your firearm.

When loading a semi-automatic rifle, make sure that the muzzle is pointed in a safe direction and you are not exposed to the breech and the bolt assembly's ejector port or top opening as you release the bolt to travel forward.



Never let water, snow, mud or other material enter the barrel. Always be sure the barrel is free of any obstruction.

Since many ammunition identifications sound similar, be sure that you use only the correct ammunition for your gun. Do NOT use the wrong size or wrong strength ammunition in your firearm.

Repeated and prolonged exposure to gunfire may result in toxic levels of lead in your body. In addition, there are risks of cancer, impotency and birth defects. When shooting indoors, make sure there is proper ventilation.

Teach children: 1. NOT to touch guns, bullets, cartridges, shells or any explosive device and 2. if they discover such a dangerous item or weapon, they must immediately report its location to their parents, school teacher and police. Remember a firearm has the capability of taking your life or the life of someone else. Be careful with your firearm -- an accident is almost always the result of not following basic safety rules.

HOME SAFETY IS PROBABLY YOUR BIGGEST CONCERN. We suggest the following gun lock: Master Gun Lock. It works on most Firearms and is available in gun shops and sporting goods departments. For more information write: Master Gun Locks; Master Lock Company LLC, P.O. Box 927, Oak Creek, WI. 53154. (Www.masterlock.com) After all you have invested this much in your new gun, now invest a little more in your family's safety.

USED FIREARMS - If you got your EUROPEAN AMERICAN ARMORY, CORP.. firearm as a used gun, BEFORE USING IT you should unload it and check all its functions to be sure it works correctly. Firearms are some times altered to work incorrectly, or parts may be removed, lost or replaced with incorrect parts. First, unload it and check it yourself and then take it to a good gunsmith who knows EUROPEAN AMERICAN ARMORY, CORP.. Baikal firearms, and have him examine it.

WRITE US concerning any items or circumstances which you don't understand and which might relate to your safety and the operation of your firearm.

### **WARNING**

ANY BORE OBSTRUCTION, EVEN IF IT IS ONLY PARTLY BLOCKED, MAY CAUSE THE GUN TO BLOW UP IF IT IS FIRED, OR MAY CAUSE DAMAGE TO THE GUN SUCH AS A BULGED BARREL. TO AVOID INJURY OR DEATH TO THE SHOOTER OR BYSTANDERS, CHECK THE BARREL BEFORE SHOOTING OR IF A SHOT DOES NOT SOUND NORMAL.



## EXTERNAL CONTROL PARTS

DO NOT LOAD THIS Rifle UNTIL YOU UNDERSTAND THE SAFETIES AND HOW THIS Rifle OPERATES.

**Manual Safety Button:** Located in front and on top of trigger guard and is a push button / trigger block safety. This safety blocks the trigger ( pushed from right to left, red showing on left side and safety is disengaged.... pushed from left to right red covered and safety is engaged) . To fire, push safety from right hand side to left hand side to expose red. KEEP this rifle “on safe” (red covered and safety pushed from left hand side to right hand side) except at the actual moment of firing, to help protect against accidental firing and possible injury or death of yourself or others. (See Fig: 1a and 1b)



Figure 1a



Figure 1b

### Ejection Port Cover:

Can be moved from side to side. Put on left hand side and gun ejects on RH side. Put on right hand side and gun ejects on LH side. To move from side to side, push holding pin up and them move to desired side and push pin back in place thus locking cover in place (See Fig: 2a, 2b, 2c, 2d)



Figure 2a



Figure 2b



Figure 2c



Figure 2d

### Scope Mount:

Molded on top of Barrel in handle. The top of the handle / sight plane is a picatinny rail for various type of accessories. (See Fig: 4)



Figure 4

**Bolt Handle:** Used to cock the bolt rearward can be moved from RH side to Left hand side or vise a versa. Pull handle out and the put in side you wish in bolt



handle hole. (See Fig: 5a and 5b)

**Bolt Hold Back:** The bolt is locked in the rearward position with the bolt lock on the left hand side of the rifle is down. The bolt will also lock back when the magazine is empty and the bolt is in the rearward position (See Fig: 6). Bolt can be released by pushing the Bolt Hold Back up (See Fig: 6)



Figure 5a



Figure 5b



Figure 6

**Adjustable Sights:** Located on the top of the rifle behind the Pictinny Rail. The screw is on the right hand side of the rear sight and is used to adjust wind-age, clock wise turning will move the rear blade to the right side and counter clock wise to the left. (See Fig: 7a and 7b) . The front sight adjusts for elevation and the bolt handle is the tool for adjustment, RH turning will move the sight down and left hand turning will move the sight up. To make your gun shoot lower move the sight up and to make your gun shoot higher move the sight down. (See Fig 7c and 7d)



Figure 7a



Figure 7b



Figure 7c



Figure 7d

**Trigger:** Located in trigger guard and moves fore and aft to fire rifle (See Fig: 8)



Figure 8

**Magazine Catch and Magazine:** Magazine Catch is a push button that moves in and out to release or lock magazine, located in aft bottom portion of thumb hole area of stock. (See Fig: 9a) Magazine is located



Figure 9a



below ejection port at bottom of stock, moves in and out of stock and locks in place with magazine catch. (See Fig: 9b)

## **LOADING INSTRUCTIONS**

1. Always use original high quality commercially manufactured ammunition in good condition. Hollow point ammo can sometimes cause feeding problems in semi-automatic rifles. If you find one brand that works well, stick with it. Avoid the use of military surplus, reloaded, or hot loaded ammo. EUROPEAN AMERICAN ARMORY, CORP.. assumes no responsibility for incidents which occur through the use of cartridges of non-standard dimension or those developing excessive pressures.

2. Before loading be sure the rifle is fully unloaded (See Unloading Instructions) and the MANUAL SAFETY BUTTON IS ENGAGED OR PUSHED FROM LEFT TO RIGHT SO THE RED RING IS COVERED.

3. Depress the magazine catch and remove the magazine. (See Fig: 10)

4. Load the magazine with cartridges by pushing the cartridge down and into the magazine and then sliding the cartridge rearward with your thumb. (See Fig: 10a, 10b)



**Figure 10a**

5. Insert the magazine in the receiver until the magazine catch secures it in the receiver with a click. Avoid slamming the magazine into the rifle. Handle the magazine carefully when loading. Any damage by dropping may bend the magazine lips which can cause mis-feeding. (See Fig: 10c)



**Figure 10b**

6. To load the chamber, first be sure your fingers are out of the trigger guard, the gun is pointed in a safe direction and you are wearing eye & hearing protection. Holding the rifle grip, grasp the bolt handle with your other hand and pull the bolt assembly rearward until it cannot travel any further. Release the bolt and allow it to go forward into the closed position. As the bolt assembly travels forward, it will automatically strip a cartridge from the magazine lips and insert it into the firing chamber. (See Fig: 10d)



**Figure 10c**



**Figure 10d**



**Figure 9b**



**⚠ WARNING** Keep Your face away as bolt closes and never force the bolt assembly closed.

**⚠ WARNING** Your rifle is now loaded and ready to fire. IMMEDIATELY MAKE SURE THE SAFETY BUTTON IS ENGAGED OR IN THE SAFE POSITION. At this point the safety is on and the gun is cocked. (See Fig: 11a )



**Figure 11a**

7. IF YOU DO NOT WISH TO FIRE THE RIFLE AFTER LOADING, UNLOAD IT IMMEDIATELY. See Unloading Instructions. NEVER CARRY, HANDLE, OR CLEAN THIS RIFLE WITH A LOADED CARTRIDGE IN THE CHAMBER. EVEN WITH THE MAGAZINE REMOVED, THIS FIREARM WILL STILL FIRE, IF A ROUND IS IN THE CHAMBER AND THE TRIGGER IS PULLED AND THE SAFETY IS DIS-ENGAGED.

### **⚠ WARNING**

Always keep the muzzle pointed in a safe direction! Never attempt to load or unload any firearm inside a vehicle, building or other confined space (except a properly constructed shooting range). Enclosed areas frequently offer no completely safe direction in which to point the firearm. If an accidental discharge occurs, there is great risk of injury or property damage. Before loading, always clean all, grease and oil from the bore and chamber, and check to be certain that no obstruction is in the barrel. Any foreign matter in the barrel could result in a bulged or burst barrel or other damage to the firearm and could cause serious injury to the shooter or to others.

## **UNLOADING INSTRUCTIONS**

1.ALWAYS keep your firearm pointed in a SAFE DIRECTION.

2.BE SURE THE SAFETY BUTTON IS ON SAFE or engaged.

3.Press the magazine release button and remove the magazine from the rifle.



**Figure 12**

### **⚠ WARNING**

removal of the magazine does NOT prevent this rifle from firing. If a bullet or round is in the firing chamber, that round can still be fired.(See fig: 12)

4. Unload the firing chamber by keeping the rifle pointed in a safe direction, keep your finger(s) outside of the trigger guard and off the trigger. (See fig: 12a)



**Figure 12a**



5. Pull the bolt assembly (gripping the bolt handle) to the rear so that the extractor can pull out the cartridge in the chamber. Visually check to be sure that the chamber is completely empty and the cartridge has completely exited the firearm. The barrel may be checked by passing a cleaning rod through it. (See fig: 12b, 12c, 12d)



**Figure 12b**



**Figure 12c**



**Figure 12d**



**Figure 13**



**Figure 13a**



**Figure 13b**

## **⚠ WARNING**

When you remove the magazine always double check the chamber to insure you have completely unloaded this firearm. Since the trigger will operate without a magazine inserted, make sure that the safety is on safe or pushed from the left hand side to the right hand side.

## **FIRING INSTRUCTIONS**

1. Before firing, check to be sure you have a safe target and backstop. Never shoot at hard flat surfaces, rocks, water or anything that might make the bullet ricochet. Think about what you will hit if you miss the target. Put on your eye and hearing protection.

2. Load the magazine and chamber as discussed in the Loading Instructions. Keep the gun pointed toward the target.

3. Push the Safety Button from right to left or disengaged, only disengaged the safety when you are ready to fire. (See Fig: 13)

4. Grasp the rifle by the grip and keep it forward away from the body. Never place your hand in front of the barrel at any time. Take aim by placing the front sight post exactly between the two rear sight posts and they are horizontally in line. Carefully align the front sight and rear sight so that the top surfaces mate at the lower or 6 o'clock position of the black portion of the target. Squeeze the trigger and the gun will fire. After the first shot, the action will automatically cock for successive firing and the action will be indicated as cocked by the cocking indicator (you can easily feel if the action is cocked by sliding your hand over the cocking indicator and it is protruding from the stock the action is cocked). A gentle squeeze of the trigger is all that is necessary for successive firing and is best for accuracy.(See Fig: 13a and 13b)



5. The rifle will fire one shot with every squeeze of the trigger until the magazine is empty. When the guns stops firing, take your finger off the trigger and push the safety button from left to right so as engage the safety. Remove the magazine, pull the bolt back and check the chamber to make sure it is empty and then repeat loading and firing instructions as desired.



**Figure 13c**

If you want to stop firing, immediately engage the safety button. Unload the firearm as stated in Unloading Instructions. (See Fig: 13c)

### **⚠ WARNING**

If there is any reason to suspect that a bullet or projectile is obstructing the bar-rel, immediately unload the firearm (See Unloading Instructions) and check the firing chamber and the bore. It is not sufficient to merely retract the bolt and look at the rear of the barrel (firing chamber). A bullet may be lodged some distance down the barrel where it can not easily be seen. Check the bore by using a cleaning rod to pass through the barrel. If a bullet is in the bore, **DO NOT ATTEMPT TO SHOOT IT OUT WITH ANOTHER CARTRIDGE, OR BLOW IT OUT WITH A BLANK CARTRIDGE OR A CARTRIDGE FROM WHICH THE BULLET HAS BEEN REMOVED. SUCH TECHNIQUE(S) CAN GENERATE EXCESSIVE PRESSURE, DAMAGE THE FIREARM AND CAUSE SERIOUS PERSONAL INJURY.** If the bullet can be removed with a cleaning rod, clean any unburned powder grains from the bore, chamber & mechanism before resuming shoot-ing. If the bullet can not be dislodged by tapping it with a cleaning rod, take the firearm to a gunsmith.

### **⚠ WARNING (Mechanical Malfunctions)**

**STOP SHOOTING IMMEDIATELY AND UNLOAD YOUR FIREARM** if your firearm develops: a mechanical malfunction; binding or stoppage; spitting powder/gas; a cartridge primer is punctured; a cartridge case is bulged or ruptured; or the sound on firing does not sound quite right. Do **NOT** try one more shot but unload your firearm and take it and the ammunition to a gunsmith for examina-tion. Do not assume that the rifle is empty merely because the bolt remains open. An unfired cartridge or a fired cartridge case jammed between the bolt and the barrel can prevent the bolt from closing. Always look in the chamber to make sure! Should a jam occur, clear it as follows: 1. point the muzzle in a safe direction, engage the safety and remove the magazine 2. Pull back the bolt 3. remove the jammed cartridge or case by shaking the rifle or picking it out with your fingers.

**WARNING:** Lead or lead compounds are known to the State of California to cause cancer, birth defects and/or reproductive toxicity. Those who clean fire-arms should take protective measures to avoid contact or exposure to such chemicals.



## CLEANING AND MAINTENANCE OF THE RIFLE

1. Materials needed to clean this rifle are a rifle cleaning rod, cotton bore patches, brass bore brush, powder solvent, a small soft brush and good quality gun oil.
2. Make sure the rifle is unloaded and the safety is engaged, see unloading instructions.



**WARNING:** These products can expose you to chemicals including LEAD, which is known to the State of California to cause cancer and birth defects or other reproductive harm. For more information go to [www.P65Warnings.ca.gov](http://www.P65Warnings.ca.gov).



**ADVERTENCIA:** Este producto puede exponerle a químicos incluyendo PLOMO, que es conocido por el Estado de California como causante de cáncer y defectos de nacimiento u otros daños reproductivos. Para mayor información, visite [www.P65Warnings.ca.gov](http://www.P65Warnings.ca.gov).

3. Using the bore brush with powder solvent scrub the barrel and chamber to remove any powder and lead residue in the bore. Secondly, swab the bore with cotton patches soaked in solvent. Always and lastly, swab with cotton patch with gun oil to coat and protect the bore from rust and corrosion.
4. Any powder fowling on the receiver or breech face of the bolt can be easily cleaned with a brush and powder solvent.
5. All external metal surfaces should be wiped down with light coat of rust preventative. Avoid using too much oil as dust and/or debris can get trapped in the oil creating a gum that in time will cause misfires.
6. **CAUTION** in using solvents in gun bore cleaning. Prolonged or excess contact with finish or bluing can damage the gun's finish. Be sure to wipe away all excess solvent and then lubricate with oil.
7. A gun should be cleaned after firing. In addition, metal external parts should be wiped with an oiled cloth after handling. A light oil is ordinarily all that is necessary in cleaning if the gun has not been fired or fired very little. If a gun is used frequently, it must be cleaned after each firing and regularly serviced by a professional gunsmith. If the gun has been stored, remove all excess oil and/or grease before firing. Always check to be sure that no cleaning patch or other obstruction remains in the bore or chamber before firing.
8. Make sure that polymer parts are not exposed to gun cleaning solvents and if so they should be wiped off as soon as possible. Polymer parts may be cleaned with a good polymer cleaning solution (see your local gun shop).



## Instructions on Changing your Appeal to Left or Right Handed Ejection

1) First you must remove the top cover of your receiver. This is done by first removing the magazine and checking the rifle to make sure it is unloaded.

(see Fig. E1a)



Figure E1a

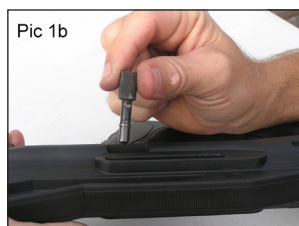


Figure E1b

Remove the bolt handle (see Fig. E1b) by grasping the handle with your finger and pulling it straight out. There are three pins on your rifle that have to be removed by using a pin punch and driving them out left to right.(see Fig. E1c)



Figure E1C

2) After removal of the receiver pins, remove the top cover by pulling it upwards. Now all the internal parts are exposed. (see Fig. E2a)



Figure E2a



Figure E3a

3) Grasp the action spring and guide rod pulling it forward and up. Remove the spring and guide rod. (see Fig. E3a)

**⚠WARNING:** The rod is under spring tension and should be pointed in a safe direction.



Figure E4a

4) There are two silver rods on both sides of the bolt. Remove these by pushing them rearwards. (see Fig. E4a).



Figure E5a

5) Remove the bolt extension and pull the bolt rearwards and up, then remove from the frame. (see Fig. E5a and E5b)



Figure E5b



6) Remove the extractor and replace it on the opposite side. (see Fig. E6a)

This is done by using a pin punch and pushing the extractor pin upwards then removing the extractor and extractor spring. Then placing the extractor spring in the hole on the opposite side of the bolt, flipping the extractor over and placing it in the slot. Press the extractor inwards against the extractor spring and replace the extractor pin in the hole to retain the extractor. (see Fig. E6b, E6c, E6d, E6e).

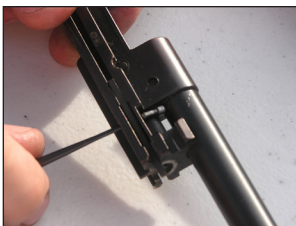
7) Holding the lower receiver in front of you, the ejector is located on the left side of the receiver just under the bolt guide hole. (see Fig. E7a)

Remove the retaining pin. (see Fig. E7b).

After removing the retaining pin, remove the ejector and flip it over to the opposite side of the receiver. Place the ejector in the slot. Then replace the ejector pin to retain the ejector in place. (see Fig. E7c)

8) The last operation is to relocate the ejection port cover to the opposite side. (see Fig. E8a)

On the rear of the upper receiver there are two slots for the ejection of the casings. One is covered and one is not. Remove the pin by tapping downward with a pin punch. (see Fig. E8b)



**Figure E6a**



**Figure E6b**



**Figure E6c**



**Figure E6d**



**Figure E6e**



**Figure E7a**



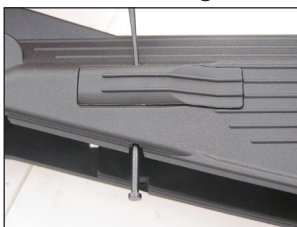
**Figure E7b**



**Figure E7c**



**Figure E8a**



**Figure E8b**



Push out the cover and replace it in the opposite slot. Replace the retaining pin to hold the cover in place.(see Fig. E8c)



**Figure E8c**



**Figure E9a**

9) To reassemble, replace bolt and make sure it is aligned with the ejector. (see Fig. E9a). Replace the bolt guide rods and make sure they are aligned with the bolt and frame. Place the bolt extension back in place.(see Fig. E9b)



**Figure E9b**

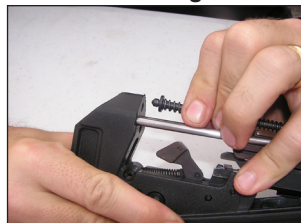


**Figure E10a**

10) Replace the main spring. (Note: It has two different ends, one end is short and pointed and the other is long and flared with a nub.)(see Fig.E10a)



**Figure E11a**



**Figure E11b**

11) The short pointed end is inserted first into the bolt, this is the detent for the bolt handle (see Fig. E11a). Now pressing forward and down the back end locks into the hole in the back of the receiver block.(see pic Fig. E11b)

### **WARNING:**

This is a spring and will fly out under tension. Make sure it is always pointed away from you in a safe direction.



**Figure E12a**



**Figure E12b**



**Figure E12c**

12) Now, after the reassembly of the internal parts, place the upper receiver onto the lower receiver. (see Fig. E12a) Replace the 3 pins in the proper holes. (see Fig. E12b). Reinstall the bolt handle.



**Figure E12d**



**Figure E12e**

Put your safety on and pull the bolt rearward, checking the chamber to make sure it is not loaded. (See Fig. E12c, E12d, and E12e) You are now ready to shoot.



## ONE YEAR LIMITED WARRANTY

This EUROPEAN AMERICAN ARMORY, CORP.. firearms is warranted to the original retail customer for One Year from date of purchase against defects in material and workmanship. All parts and labor or replacement at our option are covered.

Transportation to and from our repair facilities, government fees, damage caused by failure to perform normal maintenance, sales outside the United States, damage due to use of high velocity, high pressure, reloaded or other nonstandard ammunition, or any unauthorized repair, modification, misuse, abuse, or alteration of the product is not covered by this Limited Warranty.

Any implied warranties, including the implied warranties of merchantability and fitness for a particular purpose, are limited to one year from date of original retail purchase. Consequential or incidental damages and/or expenses, or any other expenses are not covered by this warranty.

To obtain warranty performance send your firearm with proof of retail purchase, freight prepaid to:

EUROPEAN AMERICAN ARMORY, CORP..  
1426 King Street  
Cocoa, FL 32922

## WARNING

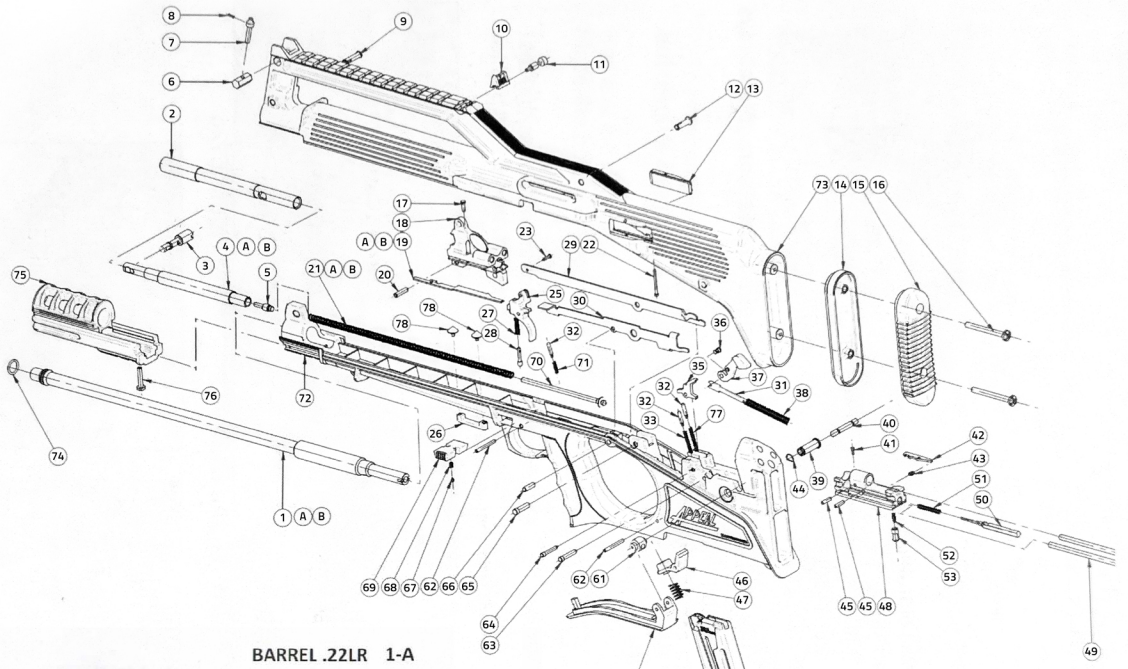
Altering or modifying parts and/or safeties is dangerous and will void the warranty. This recoil operated semi-automatic rifle was manufactured to perform properly with the original parts as designed. It is your duty to make sure any parts you buy are made for this firearm and are installed correctly and that neither the replacements nor originals are altered or changed. Your gun is a complex precision tool with many parts that must relate correctly to other parts in order for proper and safe operation. Putting a gun together wrong or with incorrect or modified parts can result in a damaged gun, danger, and injury or death to you and others through malfunction. Always have a qualified gunsmith work on your gun or at least check any work not performed by a gunsmith.

## **ALL PARTS ORDERS ARE SUBJECT TO A \$10.00 CHARGE FOR SHIPPING AND HANDLING.**

Please state Model, Caliber, Serial Number, and Finish Color when ordering. For parts and service contact: EUROPEAN AMERICAN ARMORY, CORP., 1426 King Street, Cocoa, FL 32922. Phone: (321) 639-4842.



# APPEAL PARTS LIST



BARREL .22LR	1-A		
BARREL .22 MAG.	1-B		
BOLT LEVER	2		
EXTENDED RECOIL SPRING SLEEVE .22WIN. MAG.	3		
RECOIL SPRING SLEEVE .22LR	4-A		
RECOIL SPRING SLEEVE .22 WIN. MAG.	4-B		
BOLT LEVER PIN	5		
FRONT SIGHT SUPPORT	6		
FRONT SIGHT	7		
FRONT SIGHT PIN	8		
FRONT ASSEMBLING STOCK PIN	9		
REAR SIGHT	10		
REAR SIGHT SCREW	11		
CENTER ASSEMBLING STOCK PIN	12		
EJECTOR HOUSING COVER	13		
RECOIL PAD INSERT	14		
RECOIL PAD	15		
RECOIL PAD SCREW	16		
EJECTOR PIN	17		
BARREL SUPPORT	18		
EJECTOR .22LR	19-A		
EJECTOR .22WIN. MAG.	19-B		
BARREL PIN	20		
RECOIL SPRING .22LR	21-A		
RECOIL SPRING .22WIN. MAG.	21-B		
EJECTOR HOUSING PIN	22		
TRIGGER BAR PIN	23		
TRIGGER	25		
SERIAL NUMBER INSERT	26		
TRIGGER SPRING	27		
TRIGGER PLUNGER	28		
TRIGGER BAR	29		
HOLD OPEN	30		
HAMMER STRUT	31		
TRIGGER BAR AND HOLD OPEN PLUNGER	32		
SEAR LEVER SPRING	33		
SEAR LEVER	35		
HAMMER STRUT PIN	36		
HAMMER	37		
HAMMER SPRING	38		
REAR ASSEMBLING STOCK PIN BUSHING	39		
REAR ASSEMBLING STOCK PIN	40		
EXTRACTOR PIN	41		
EXTRACTOR	42		
EXTRACTOR SPRING	43		
REAR ASSEMBLING STOCK PIN SPRING	44		
FIRING PIN PIN	45		
MAGAZINE CATCH	46		
		MAGAZINE CATCH SPRING	47
		BOLT	48
		BOLT GUIDE	49
		FIRING PIN	50
		FIRING PIN SPRING	51
		AUTOMATIC FIRING PIN SAFETY SPRING	52
		AUTOMATIC FIRING PIN SAFETY	53
		MAGAZINE PAD	54
		FOLLOWER SPRING STOP .22LR	55-A
		FOLLOWER SPRING STOP .22WIN. MAG.	55-B
		MAGAZINE SPRING .22LR	56A
		MAGAZINE SPRING .22MAG.	56B
		FOLLOWER BUTTON	57
		FOLLOWER .22LR	58-A
		FOLLOWER .22MAG.	58-B
		MAGAZINE .22LR	59-A
		MAGAZINE .22MAG.	59-B
		COVER	60
		HAMMER SPRING BUSHING	61
		MAGAZINE CATCH PIN	62
		HAMMER PIN	63
		SEAR LEVER PIN	64
		BARREL SUPPORT PIN	65
		HOLD OPEN PIN	66
		SAFETY PLUNGER	67
		SAFETY SPRING	68
		REVERSIBLE SAFETY	69
		RECOIL SPRING GUIDE	70
		HOLD OPEN SPRING	71
		LOWER STOCK	72
		UPPER STOCK	73
		BARREL O-RING	74
		FLASH HIDER	75
		FLASH HIDER SCREW	76
		TRIGGER BAR SPRING	77
		RIVET	78



## **WARNING**

Children are attracted to and can operate firearms that can cause severe injuries or death.

Prevent child access by always keeping guns locked away and unloaded when not in use. If you keep a loaded firearm where a child obtains and improperly uses it, you may be fined or sent to prison.

## **ADVERTENCIA**

A los niños les atraen las armas de fuego y los pueden hacer funcionar. Ellos pueden causarse lesiones graves y la muerte. Evite que los niños tengan acceso a las armas de fuego guardándolas siempre con llave y descargadas cuando no las esté utilizando. Si usted tiene un arma de fuego cargada en un lugar en que un niño tiene acceso a ella y la usa indebidamente. Le pueden dar una multa a enviarlo a la cárcel.

### **Importer:**

EUROPEAN AMERICAN ARMORY, CORP..  
1426 King Street  
Cocoa, FL 32922

### **Manufacturer:**

Fratelli Tanfoglio, S.n.c.  
Via Valtrompia 39/41  
25063 Gardone V.T.  
Brescia, Italy