

# TRIGGER INSTALLATION INSTRUCTIONS

## SAVAGE *AXIS / EDGE*



Before beginning work on any firearm, remove the ammunition source and double check to insure the chamber is empty.

Installation of the Timney Trigger on a Savage EDGE should take about 10 minutes. You'll need a flat tip screwdriver, a 5/32 hex wrench, a 5/64 hex wrench and a small adjustable wrench or a 1/4 inch open end wrench.

Clear your work space, unload the rifle and remove the barreled action by taking out the two 5/32 action screws. Set the stock aside and remove the bolt from the action. Now, remove the factory trigger by using the flat tip screw driver to push the C-Clip (DIAGRAM A) from the trigger pin. Don't lose this clip. Push out the trigger pin (DIAGRAM B) and lay it and the C-Clip aside (DIAGRAM C)

Insert the Timney Trigger into the action with the new trigger pull-weight spring (#3 - DIAGRAM D), lining up the hole in the Timney Trigger with the hole in the trigger assembly on the Savage Edge (DIAGRAM D). Once lined up, push in the trigger pin and secure it with the C-Clip (DIAGRAM E) Note the two 5/64 hex screws labeled in this diagram. After setting the sear engagement you'll use these screws to adjust the pull weight and the safety.

Insert the bolt in the action and slowly tighten the sear engagement screw until the trigger releases. Then, back the screw out about 1/6 of a turn and tighten the lock nut. Install the action and secure it with the front action screw. Now, test the trigger. If you would like to adjust the pull weight, adjust the rear screw (#1 - DIAGRAM D). When adjusted to the desired pull weight, adjust the safety screw (#2 - DIAGRAM D) until there is no play in the safety. Cycle the action and test the safety and trigger.

Finally, install the trigger guard (DIAGRAM G) and secure the action in the stock with the rear 5/32 hex screw. If you want to further refine the pull weight adjustment, all you have to do is remove the trigger guard to access the pull weight screw (#1 - DIAGRAM D). You're done!

**INSTALLATION DIAGRAMS ON BACK**



DIAGRAM A



DIAGRAM B

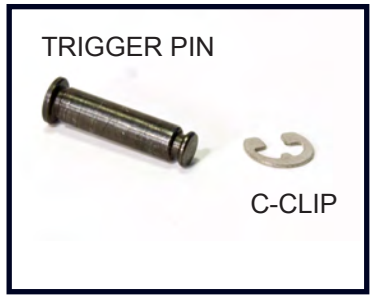


DIAGRAM C

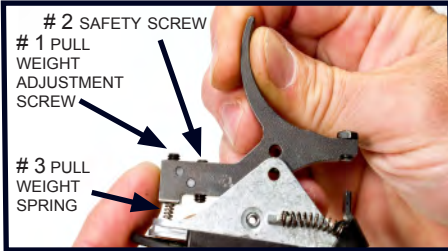


DIAGRAM D



DIAGRAM F

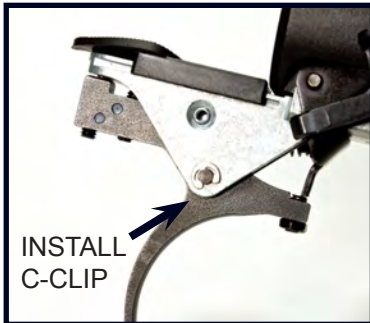


DIAGRAM E



DIAGRAM G

**NOTE: If you have trouble, contact Timney or check out the troubleshooting steps on the Timney web site. Timney will also install your trigger for \$ 40.00 plus \$ 35.00 shipping and handling.**

**TIMNEY TRIGGER GUARANTEE**

Material and workmanship: This TIMNEY trigger has been carefully inspected, tested and adjusted to give a lifetime of dependable service. Every possible care has been exercised in its design and construction. If any defect in workmanship or material should develop under conditions of normal use and service, necessary repairs, including parts and labor will be made at no charge to the purchaser, providing that our inspection reveals parts were not damaged through accident, alteration, misuse, abuse or other causes beyond our control. We neither assume nor imply any oral or statutory warranties, and we neither assume nor authorize any person to assume us for any obligation or liability in connection with this trigger. Repairs or disassembly of this trigger in any manner, without specific authorization, voids the guarantee.

TIMNEY MFG. 3940 W. CLARENDON AVE. PHOENIX, AZ 85019