



# ROSSI®

## OWNER'S MANUAL

Rossi® Gallery



GENERAL SAFETY,  
OPERATING INSTRUCTIONS  
AND LIMITED WARRANTY

**READ CAREFULLY BEFORE USING YOUR FIREARM**

**Important: Keep this manual with your firearm.**

The information contained in this manual is useful, both for beginners and experienced shooters. In addition to important information about the function, cleaning and care of the firearm, this manual contains instructions that are very helpful in shooting safely. **The most important rule of safe firearm handling is always keep the muzzle pointed in a safe direction!**

## TO OUR CUSTOMERS

Congratulations on the purchase of your new Rossi firearm. Like any precision instrument, if properly cared for, your Rossi should give you years of shooting enjoyment. Please take the time to read and understand the warnings and instructions contained in this owner's manual. This manual should be kept with your firearm. Upon change of ownership, transfer this manual with the firearm.

### **WARNING**

Never allow a minor to shoot without adult supervision. Never leave a firearm in the possession of a minor. When shooting with a child, make sure to remain close and safely supervise all activities. Always store firearms and ammunition separately.

### **NOTICE**

It is recommended that you record the model number, serial number and date of purchase of your Rossi firearm for future reference. Be sure to retain your store receipt and any other documentation that came with your Rossi.

Model Number	
Serial Number	
Date of Purchase	

## TABLE OF CONTENTS

<b>6</b>	Firearm Safety
<b>8</b>	Firearm Safety Systems
<b>9</b>	Get to Know Your Firearm
<b>10</b>	Firearm Storage and Gun Locks
<b>10</b>	Ammunition
<b>12</b>	Manual Safety
<b>14</b>	Loading Your Firearm
<b>16</b>	Adjusting Sights
<b>17</b>	To Fire
<b>18</b>	Unloading Your Firearm Failure to Fire
<b>19</b>	Care and Maintenance Cleaning Instructions Repair Instructions
<b>20</b>	Exploded View Parts List
<b>22</b>	Repair Policy

**ROSSI**

ALWAYS KEEP THE MUZZLE POINTED IN A SAFE DIRECTION.

*Intentionally Left Blank*

## NOTES

---



---



---



---

### **⚠ WARNING**

The safety warnings in this booklet are important. By understanding the dangers inherent in the use of any firearm, and by taking the precautions described herein, you can safely enjoy your Rossi® firearm. Failure to follow any of these warnings could result in serious injury to you or others, as well as severe damage to the firearm or other property.

## SIGNAL WORDS AS DEFINED BY ANSI Z535.6 AND Z535.4 STANDARDS.

### **⚠ DANGER**

DANGER indicates a hazardous situation which, if not avoided, will result in death or serious injury.

### **⚠ WARNING**

WARNING indicates a hazardous situation which, if not avoided, could result in death or serious injury.

### **⚠ CAUTION**

CAUTION indicates a hazardous situation which, if not avoided, could result in minor or moderate injury.

### **NOTICE**

NOTICE is used to address practices not related to physical injury.

# ROSSI

ALWAYS KEEP THE MUZZLE POINTED IN A SAFE DIRECTION.

## FIREARM SAFETY

### **WARNING**

When a firearm discharges, the bullet or shot can strike a person, resulting in death or serious bodily injury.

The three basic keys to safe handling of firearms:

1. **KEEP YOUR FINGER OFF THE TRIGGER UNTIL YOU ARE READY TO FIRE.** If you maintain good trigger discipline, it is extremely unlikely the firearm will fire.
2. **KEEP THE MUZZLE POINTED IN A SAFE DIRECTION.** Even if the firearm discharges, if the muzzle is pointed in a safe direction, no one will be injured.
3. **NEVER TRUST ANY SAFETY MECHANISM.** If you adopt the attitude that you will not trust any safety mechanism, you will be vigilant about keeping your finger off the trigger and keeping the muzzle pointed in a safe direction.

### **WARNING**

**KNOW YOUR TARGET.** Never fire at targets at close range. Ricochets can and do cause death or serious bodily injury. What constitutes “close range” depends on many factors including target material, bullet caliber and angle of impact.

**KNOW WHAT IS BEHIND YOUR TARGET.** Unless you are shooting into a bullet trap designed to capture the type of ammunition you are firing, projectiles may pass through the target and strike anyone or anything beyond. Bullets can travel miles.

**ALWAYS WEAR HEARING PROTECTION.** Firearms are loud. The sound they generate is greater indoors. Repeated exposure to loud noises can cause deafness. Hearing protection is rated by decibel reduction. Look for “dB” reduction of 30 or more when purchasing ear protection. Modern ear protection can allow normal hearing until the sound from the discharge reaches the ear. By layering hearing protection, for example, wearing 30db rated foam plugs along with 20db rated ear muffs, significant protection can be achieved.

**ALWAYS KEEP THE MUZZLE POINTED IN A SAFE DIRECTION.**

**ALWAYS WEAR EYE PROTECTION.** In normal operation, firearms emit hot high-velocity gases, particles and metal. These materials flying into your eye can cause blindness. Protect your vision with proper eye protection. Any eye protection may be better than none, but look for ANSI Z87.1-2003 certified eyewear for the best protection.

**NEVER HANDLE FIREARMS WHILE UNDER THE INFLUENCE OF DRUGS OR ALCOHOL.** Firearms are dangerous. Handling firearms while impaired by drugs or alcohol is foolhardy and can result in serious injury or death. This warning includes prescription drugs that contain a warning about using machinery or driving while taking the medication.

**MODIFIED FIREARMS ARE DANGEROUS, AND USE CAN RESULT IN SERIOUS INJURY OR DEATH.** “Trigger jobs,” polishing original components or installing aftermarket parts can cause a firearm to function in ways different than intended. Some such work may also be illegal.

**DAMAGED FIREARMS ARE DANGEROUS, AND USE CAN RESULT IN SERIOUS INJURY OR DEATH.** Repairs should always be made by a qualified gunsmith or by a factory-authorized repair site. Work done by those unfamiliar with the design can cause a firearm to function in ways different than intended.

**NEVER ATTEMPT TO DISASSEMBLE OR CLEAN A LOADED FIREARM. DOING SO CAN RESULT IN SERIOUS BODILY INJURY OR DEATH.** How often have we heard “But it went off while I was cleaning it!” or, “I did not know it was loaded!” or, “It was jammed, and I tried to take it apart!”?

**IF A FIREARM GOES OFF, THERE WAS A ROUND OF AMMUNITION IN THE CHAMBER.** Period. “Clear” (or empty) the firearm of all ammunition before disassembling or cleaning.

As owner of your new Rossi firearm, you are responsible for (1) keeping your finger off the trigger, (2) pointing the muzzle in a safe direction, (3) removing ammunition from the firearm, and (4) looking and feeling in the chamber to confirm the firearm is empty. An empty firearm cannot fire.

**ROSSI**

ALWAYS KEEP THE MUZZLE POINTED IN A SAFE DIRECTION.

## FIREARM SAFETY SYSTEMS

Firearm safety is supported by a system. With your firearm, the system is made up of the following:

1. **You!** Your involvement in safety cannot be overemphasized. No safety component can keep your finger off the trigger and the muzzle pointed in a safe direction. Also, you are the key to never trusting any of the mechanical parts of the safety system.

2. **Manual Safety -**

Always use the manual safety.

The manual safety button is located at the rear of the receiver and must be manually pressed to the desired position. See fig 1 and fig 2.



Manual Safety ON

3. **Trigger guard -** This is a physical obstruction that helps prevent unintended pressing of the trigger. Do not modify the trigger guard.



Manual Safety OFF

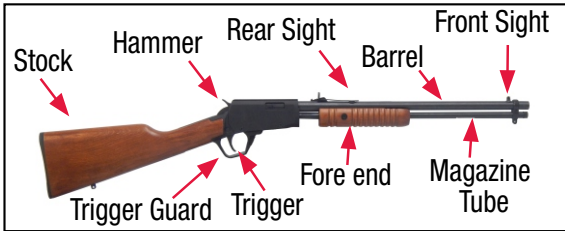
4. **This Manual -** Rossi intends for you to use this manual to learn about your firearm and to help you use your firearm safely. If you use the manual, you will be a long way toward being a knowledgeable and safe firearms owner.

5. **Online Resources -** RossiUSA.com hosts a library of videos concerning safety and related issues. This library is being added to and revised. Please visit the site and take advantage of what is available there as part of your education on using your Rossi firearm safely.

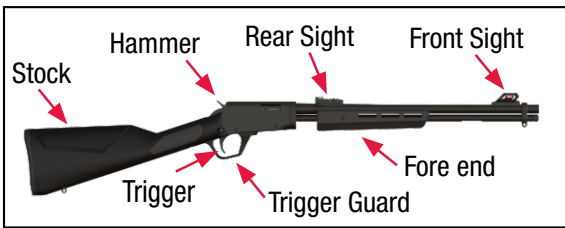


# GET TO KNOW YOUR FIREARM

**FIG 3: GALLERY WOOD FURNITURE**



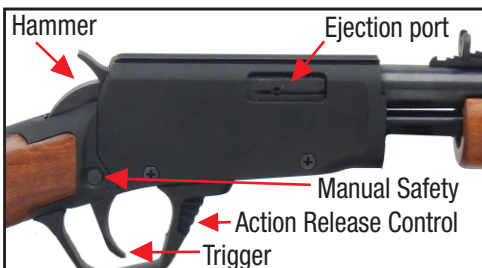
**FIG 4: GALLERY SYNTHETIC FURNITURE**



**FIG 5: LOCK**



**FIG 6: RIGHT-SIDE**



**ROSSI**

ALWAYS KEEP THE MUZZLE POINTED IN A SAFE DIRECTION.

## FIREARMS STORAGE AND GUN LOCKS

How you secure your firearms is a personal choice based on the unique circumstances in your home, business or vehicle and the laws of the state where your firearm is located. Any choice you make about securing your firearms will present advantages and disadvantages. You must weigh those advantages and disadvantages and choose which security method is best for you and those around you (see figure 5 page 9).

### WARNING - LOCKING

Never lock a firearm with a round of ammunition in the chamber. Unlocking a loaded firearm makes it more difficult to maintain trigger discipline and to keep the muzzle pointed in a safe direction.

### WARNING

Failure to secure a firearm may result in injury or death. Properly securing a firearm means storing your firearm unloaded, and securely locked, with all ammunition in a separate location.

## AMMUNITION

### WARNING

Using the wrong ammunition in your firearm can result in serious bodily injury and damage to your firearm. Make certain the ammunition you load in the chamber is the same caliber as is marked on the barrel.

**WARNING - AMMUNITION AND INDUSTRY STANDARDS**

Use only clean, dry factory-loaded ammunition. Old, damaged, wet or oily ammunition may fire at pressures higher than industry standard, causing injury to you and bystanders or damage to your firearm.

Do not use reloaded ammunition in your firearm. Its firing pressures are unknown and may well exceed industry standard, causing injury to you and bystanders or damage to your firearm.

Odd sounds are signs of trouble. If a round “does not sound right” when it goes off, stop firing right away. A bullet may be stuck in the barrel. Firing the firearm in this condition may cause pressures higher than industry standard, causing injury to you and bystanders or damage to your firearm.

Stop firing immediately if you hear any odd sounds. If there is any reason to suspect that the barrel is obstructed, immediately unload the firearm and make it clear. Inspect the bore for blockage with a visual inspection. It is not sufficient to merely look in the chamber. The bullet may be lodged in the barrel where it cannot be easily seen. If you do not see light when inspecting the bore, it means something is stuck in the barrel. DO NOT fire the firearm again, and take the firearm to a qualified gunsmith or contact the Rossi Service Department at 800-948-8029.

 **WARNING**

If the bore is obstructed, DO NOT attempt to shoot it out by using another cartridge or by blowing it out with a blank.

Such techniques can generate excessive pressure, damage the firearm and cause serious injury.

**ROSSI**

ALWAYS KEEP THE MUZZLE POINTED IN A SAFE DIRECTION.

## ⚠️ WARNING

### LEAD AND HAZARDOUS CHEMICAL EXPOSURE

Discharging firearms in poorly ventilated areas, handling, and /or cleaning firearms or handling ammunition can expose you to chemicals including lead which is known to the state of California to cause cancer and birth defects or other reproductive harm.

For more information, go to [www.P65Warnings.ca.gov](http://www.P65Warnings.ca.gov)

Have adequate ventilation at all times. Wash hands thoroughly after exposure with soap and water.

The use of reloaded, “remanufactured,” hand-loaded, or other nonstandard ammunition voids all warranties. Improperly loaded ammunition voids all warranties. Improperly loaded ammunition can be extremely dangerous. Severe damage to the firearm and serious injury to the shooter or to others may result. Always use ammunition that complies with the industry performance standards established by the Sporting Arms and Ammunition Manufacturers Institute, Inc., of the United States, (SAAMI).

## OPERATING INSTRUCTIONS

Your rifle is equipped with a manual safety. Always use your manual safety. Please read the manual safety function below to learn how to properly use it.

## MANUAL SAFETY

**These firearms are manufactured with a manual safety - USE IT!**



Manual Safety ON



Manual Safety OFF (red band visible)

## ⚠️ WARNING

Your firearm is equipped with the manual safety shown above. A manual safety is no substitute for safe, smart firearm handling.

**ALWAYS KEEP THE MUZZLE POINTED IN A SAFE DIRECTION.**

The manual safety button is located at the rear of the receiver.

To engage the manual safety, push the manual safety button from left to right so the **RED** band is not visible.

To disengage the manual safety, push the manual safety button from right to left. In the disengaged (off) position, the **RED** band will be visible indicating that the rifle is ready to fire.

## **⚠ WARNING**

Do not touch the trigger while the safety button is being engaged.

Never keep pressure on the trigger while closing the bolt, even if the manual safety is engaged.

### **HOW TO PLACE THE HAMMER IN THE SAFETY (HALF COCKED) POSITION**

Always use your manual safety when handling your rifle. Your rifle also features a conventional 3 position hammer.

The three positions are: all the way down, half cocked/safety and fully cocked. When the manual safety is not in use, your firearm should always be kept with the hammer in the safety/half cocked position to prevent accidental discharges. It is critical you learn how to properly and safely move the hammer to the safety position.

**Always keep the gun pointed in a safe direction.** With the hammer in the fired (down) position (fig 9), cock the hammer back slightly about a 1/16th to a 1/8th of an inch, until you feel and hear the hammer click into the safety position (fig 10). The hammer will now be locked into the safety position and if you pull the trigger to fire, the hammer should not fall. The second way to set the hammer to the safety position is from the full-cock position. You need to learn and practice this with an unloaded firearm and become very comfortable with this procedure. **If you let the hammer drop on a loaded chamber, the gun will fire. Always keep the gun pointed in a safe direction.** With the firearm pointed in a safe direction, firmly hold the hammer back with your thumb. While holding the hammer, apply just enough pressure on the trigger to release the hammer from the full-cock position. Remove your finger from the trigger and slowly lower the hammer into the safety position. The hammer will now be locked into the safety position and, if you pull the trigger to fire, the hammer should not fall. The essential maneuver of setting the safety this way is to maintain control of the hammer while quickly removing your finger from the trigger when dropping the hammer into the safety position.

# **ROSSI**

**ALWAYS KEEP THE MUZZLE POINTED IN A SAFE DIRECTION.**



**FIG 9**  
Hammer in the  
fired position.  
All the way down



**FIG 10**  
Hammer in the safety  
(half cocked) position



**FIG 11**  
Hammer in the fully  
cocked position

## **⚠ WARNING**

When the chamber is loaded, never place the hammer in the fired (down) position (fig 9).

## **⚠ WARNING**

You should practice lowering the hammer with an empty firearm until you are completely familiar and comfortable with this procedure.

## **LOADING YOUR FIREARM**

Point the muzzle in a safe direction, press the action release control and then pull the forend back to open the action. If a cartridge ejects, proceed with directions on how to unload the magazine tube to empty and clear the chamber on page 18.

Make certain that the barrel, receiver and chamber are free from any grease, oil, debris or any other obstruction before loading.

Make certain that you are using name-brand, top quality ammunition in .22 Long Rifle caliber. To load the magazine tube, first make sure the hammer is at the half cocked position. While keeping the muzzle pointed in a safe direction, twist the inner magazine tube by disengaging the magazine button (Figure 12) and pulling the tube out until the green-colored follower is visible through and clears the loading port in the outer magazine tube. With the muzzle pointed upward and in a safe direction, insert the rimmed end of the cartridges into the magazine (Figure 13) and allow them to slide down toward the action. Do not exceed the capacity of the magazine.

Next, push the inner magazine tube back down into position and lock it into place. Be careful when pushing the inner magazine tube in, as it is under spring tension. Keep the muzzle and the magazine tube pointed in a safe direction.



FIG 12



FIG 13

**If a cartridge is stuck in the barrel and you are unsure if it fired or not:** Keep the muzzle pointed in a safe direction. Treat it as a live round and handle in accordance with “WHAT TO DO IF YOUR FIREARM FAILS TO FIRE” ON PAGE 18.

### **⚠ WARNING**

The danger of personal injury or death associated with cartridges, fired or unfired, becoming stuck in a firearm can be avoided by using new, clean, factory loaded ammunition and never forcing ammunition into a chamber. If you have to force ammunition into the chamber, something is wrong! Stop! And take the rifle to a qualified gunsmith.

### **⚠ WARNING - ANY GUN MAY FIRE IF DROPPED**

If dropped or struck, the firearm may fire.

### **⚠ WARNING**

If dropped or struck the firearm should be inspected by a qualified armorer/gunsmith for a complete function check. After the firearm was dropped or struck, mechanisms, including automatic safeties, may not function as intended resulting in accidental death or serious injury.

# ROSSI

ALWAYS KEEP THE MUZZLE POINTED IN A SAFE DIRECTION.

## ADJUSTING SIGHTS ON WOOD STOCK MODEL

1. Check the firearm to ensure it is unloaded. Keep the muzzle pointed in a safe direction.
2. **Elevation Adjustment:** To adjust elevation on the rear sight, pull the rear sight upward using one hand and with the other hand move the elevator forward to make the sight shorter or rearward to make the sight taller. The taller you set the rear sight, the higher the point of impact will be.
3. **Windage Adjustment:** To adjust the windage simply move the front sight left or right by tapping it carefully using a brass punch and a hammer. If the shot is left from the target, move the front sight to the left. If the shot is right of the target, move the front sight to the right.



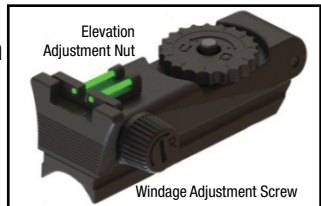
Elevation Adjustment



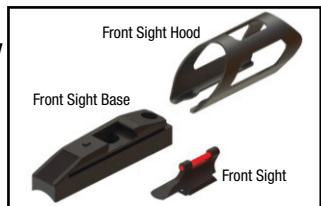
Windage Adjustment

## ADJUSTING SIGHTS ON THE POLYMER STOCK MODEL

4. **Elevation Adjustment:** To raise the rear sight, turn the elevation nut counterclockwise. To lower the rear sight, turn it clockwise.
5. **Windage Adjustment:** The rear sight should be moved in the same direction that you want the point of impact to move. Thus, to move the point of impact to the right, turn the windage screw clockwise.
6. **Disassembly:** To disassemble the front sight, first slide the front sight hood forward until it comes completely off from its housing. Next drift out the front sight by pushing it from left to right.



Rear Sight



Front Sight



7. Assembly: To assemble the front sight, put it together in reverse order. First, install the front sight pushing it from right to left until the end of the channel. Next, adjust the lower tabs of the front sight hood into the slots located on the muzzle break side, and then push it until the end of the channel, which is fixed by pressure.

## TO FIRE

### **⚠ WARNING**

Always be sure the firearm is pointed at the target and away from other people, buildings and vehicles before firing. Do not fire into water. When finished shooting, immediately set the manual safety to the safe position by pushing the safety button from left to right.

The rifle chamber can now be loaded by pulling the forend back completely and then pushing it back to a closed position.

**If the gun is cocked it will be necessary first to press the action release control\***

Important: The rifle is now set to fire. The hammer has been moved from the safety position to the full-cocked position. The manual safety should be engaged until you are ready to fire. When ready to shoot, take aim, make certain that you are firing in a safe environment, that

neither you or any other person is in danger, disengage the manual safety, and when on target, squeeze the trigger.

To chamber the next round, pull the fore end fully back and then push fully forward. You are now ready to fire next round.



Fore end completely backwards



\*Action release control: This part is located on the trigger guard of the gun. Activation of the action release control allows the opening of the rifle's chamber, even in the cocked condition, and if there is a cartridge in the chamber, it will be ejected.

# ROSSI

ALWAYS KEEP THE MUZZLE POINTED IN A SAFE DIRECTION.

## WARNING

Be careful not to touch the trigger when pulling back the forend, always keep the manual safety in the safe position until you are ready to pull the trigger. Failure to do so may result in accidental death or serious injury.

## UNLOADING YOUR FIREARM

If you want to unload your firearm without shooting, set the manual safety on, (red band is not visible) pull the forend back to open the action **WITHOUT PULLING THE TRIGGER** to eject the cartridges. Keep doing this until the firearm is empty (no cartridges come out when pulling the forend back). Or you can twist the inner magazine tube by disengaging the magazine button, pull the tube out, and remove all the live cartridges from the magazine.

## WARNING

Always make sure the breech bolt will open in a safe direction and that the unfired cartridges will fall on a safe place. Cartridges ejecting from the chamber can cause injury. **ALWAYS INSPECT THE BARREL AND BORE FROM THE EJECTION PORT SIDE TO MAKE SURE THAT THE CHAMBER IS EMPTY.**

## WHAT TO DO IF YOUR FIREARM FAILS TO FIRE

1. Misfires – If you squeeze the trigger and the cartridge does not fire, remain in the shooting position and wait 30 seconds. Then, pull the forend backward. This will eject the misfired cartridge from the gun.
2. Underpowered cartridge – An underpowered cartridge is unusual if the ammunition is fresh, clean, and factory loaded. However, if you hear an unusual sound or low report, you should stop shooting immediately, keep the muzzle pointed in a safe direction, wait a full 30 seconds and then check, visually, both the chamber and bore to make sure there is no obstruction.

## CARE AND MAINTENANCE

### **WARNING**

Before cleaning: (1) point the muzzle in a safe direction, (2) keep your finger off the trigger, (3) engage the manual safety by pushing the manual safety button from right to left, (4) pull the forend back (see page 6 and 15), visually inspect the chamber, barrel and bore to ensure the firearm is clear and safe to perform cleaning.

In order to keep a firearm safe to use, it must be kept clean and covered with a light film of good quality gun oil to prevent corrosion. The barrel bore should be cleaned and left free of debris. For normal cleaning, rub the firearm with a lightly oiled cloth. In the same way, proceed with the bore of the barrel. Excess oil should be removed. Dust should be removed from all crevices with a small clean plastic brush.

## CLEANING INSTRUCTIONS

You should always clean your rifle after use. We suggest that you purchase a top quality rifle cleaning kit. Make sure that the rifle is unloaded, and open the action. Using a cleaning rod with a lightly oiled patch, run the rod from the muzzle end of the barrel down toward the breech area, cleaning the chamber. Use a cleaning swab to remove all debris from the chamber as well as the face of the bolt and breech. It is important to make certain that there is no debris in the chamber or on the face of the bolt and breech.

## REPAIR INSTRUCTIONS

Your firearm has been designed, engineered and manufactured in accordance with Rossi's quality control standards.

However, any precision device may occasionally require adjustment or repair.

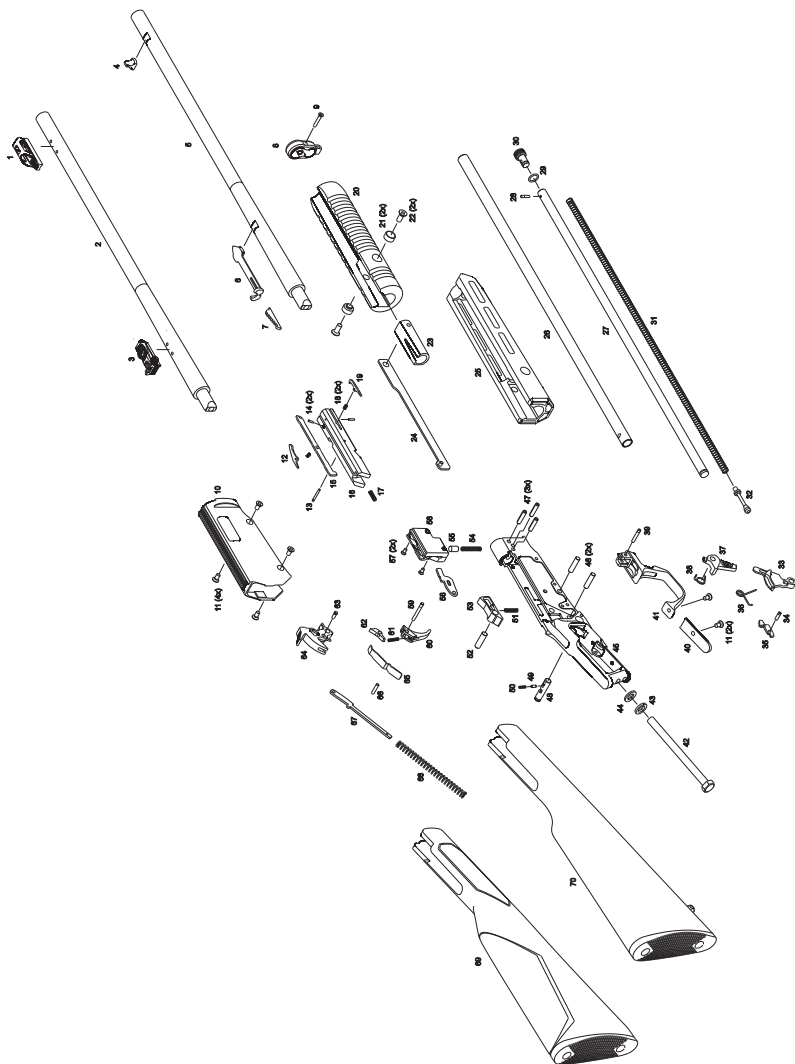
All firearms require periodic maintenance and inspection which may reveal a need for adjustment or repair. Have your firearm checked by a qualified gunsmith annually, even if it seems to be working well, since breakage, improper functioning, undue wear, or corrosion of some components may not be apparent from external examination. If you notice ANY mechanical malfunction, **STOP USING THE FIREARM.** UNLOAD the firearm and take it to a qualified gunsmith immediately. See repair policy on page 22.

# ROSSI

ALWAYS KEEP THE MUZZLE POINTED IN A SAFE DIRECTION.

## DRAWING AND PARTS LIST

This is intended as an informative guide and not a specific model or guide to assembly.



ALWAYS KEEP THE MUZZLE POINTED IN A SAFE DIRECTION.

1	.....Front Sight	43	.....Lock Washer
2	.....Barrel	44	.....Washer
3	.....Rear Sight	45	.....Receiver
4	.....Front Sight	46	.....Lever / Hammer Pin
5	.....Barrel	47	.....Expansion Pin
6	.....Rear Sight	48	.....Safety
7	.....Rear Sight Elevator	49	.....Safety Follower
8	.....Barrel Band	50	.....Safety Spring
9	.....Barrel Band Screw	51	.....Locking Bolt Spring
10	.....Receiver Cover	52	.....Locking Bolt Pin
11	.....Screw	53	.....Locking Bolt
12	.....Left Extractor	54	.....Carrier Spring
13	.....Pin	55	.....Carrier Plunger
14	.....Bolt	56	.....Cartridge Guide
15	.....Firing Pin	57	.....Cartridge Guide Screw
16	.....Bolt	58	.....Carrier
17	.....Firing Pin Spring	59	.....Trigger Pin
18	.....Extractor Spring	60	.....Trigger
19	.....Right Extractor	61	.....Trigger Spring
20	.....Forend Wood	62	.....Locking Hammer
21	.....Forend Cover Bush Screw	63	.....Pin
22	.....Screw M5 X 12	64	.....Hammer
23	.....Forearm Tube	65	.....Locking Hammer Spring
24	.....Forearm Rod Assembly	66	.....Locking Hammer Pin Spring
25	.....Forend Synthetic	67	.....Main Spring Rod
26	.....Outer Tube	68	.....Hammer Spring
27	.....Inner Tube	69	.....Stock Synthetic
28	.....Friction Stud Stop Pin	70	.....Stock Wood
29	.....O'ring		
30	.....Magazine Button		
31	.....Magazine Spring		
32	.....Magazine Follower		
33	.....Bolt Articulator		
34	.....Action Lock Pin		
35	.....Action Release Control		
36	.....Spring Lock Tile		
37	.....Action Lock Button		
38	.....Button Action Lock Spring		
39	.....Pin		
40	.....Finishing Cover		
41	.....Trigger Guard		
42	.....Stock Screw		

# ROSSI

ALWAYS KEEP THE MUZZLE POINTED IN A SAFE DIRECTION.

## PARTS

All firearms require periodic maintenance and inspection which may reveal a need for adjustment or repair. Have your firearm checked by a qualified gunsmith, even if it seems to be working well, since breakage, improper functioning, undue wear, or corrosion of some components may not be apparent from external examination. If you notice ANY mechanical malfunction, the firearm. UNLOAD the firearm and take it to a qualified gunsmith immediately.

Our Service Department maintains a full complement of replacement parts for our firearms of current manufacture. Even though most gunsmiths have the knowledge, training and ability to make the necessary repairs to your firearm, the skill and workmanship of any particular gunsmith is totally beyond our control. Should your firearm ever require service, we strongly recommend that you return it to Braztech. Follow the instructions outlined on the warranty card included with your firearm. Remember, unauthorized adjustments or parts replacement can void your warranty. It is the responsibility of the purchaser to be absolutely certain that any parts ordered from Braztech are of the correct type and are properly fitted and installed by a competent person. **THIS FIREARM IS A PRECISION MECHANISM AND THE IMPROPER FITTING OF PARTS OR IMPROPER MECHANICAL ADJUSTMENT MAY RESULT IN A DANGEROUS MALFUNCTION, DAMAGE TO THE FIREARM, AND POSSIBLE SERIOUS INJURY TO THE SHOOTER OR TO OTHERS.** Therefore, the purchaser and/or installer of parts must accept full responsibility for the correct adjustment of and function of the firearm after such installation has been made or attempted.

## ROSSI LONG GUN REPAIR POLICY

### Limited Warranty

Rossi® Gallery

Braztech International, L.C., the exclusive importer of Rossi-brand firearms into the U.S.A., hereby provides the following **ONE-YEAR LIMITED WARRANTY** to the original purchaser of the enclosed Rossi® Gallery subject to the terms and conditions set forth below.

What does the warranty cover and what is its duration ?

Braztech warrants to the original purchaser that the enclosed Gallery was made free of defects in material, function, and workmanship.

For one (1) year after the date of purchase, Braztech promises to remedy any such defect in material, function, or workmanship.

ALWAYS KEEP THE MUZZLE POINTED IN A SAFE DIRECTION.

Further, if Braztech cannot remedy any such defects after a reasonable number of attempts within the one (1) year period, Braztech will replace the Gallery with an exact or comparable model. This Warranty terminates automatically upon the transfer of the Gallery to any individual or entity other than the original purchaser.

### **Disclaimer and Limitation of Remedy.**

#### **ANY IMPLIED WARRANTIES OF MERCHANTABILITY IMPARTED BY STATE LAW WILL BE LIMITED TO ONE (1) YEAR.**

Some States do not allow limitations on how long an implied warranty lasts, so the above-limitation may not apply to you.

#### **ANY AND ALL INCIDENTAL AND CONSEQUENTIAL DAMAGES ARE EXPRESSLY DISCLAIMED UNDER ALL CIRCUMSTANCES.**

Some States do not allow the exclusion or limitation of incidental or consequential damages, so the above limitation or exclusion may not apply to you. **This ONE-YEAR LIMITED WARRANTY** gives you specific legal rights, and you may also have other rights which vary from State to State.

Braztech will not be responsible for:

- 1) Defects or malfunctions resulting from careless handling, unauthorized adjustments or modifications.
- 2) Use of defective or improper ammunition, reloaded ammunition, corrosion, neglect, abuse, ordinary wear and tear or unreasonable use.
- 3) Criminal misuse, negligence or use under the influence of drugs or alcohol.

### How do you obtain warranty service?

You must contact Braztech to receive warranty service. You may contact Braztech by calling (800) 948-8029, or in writing: c/o Consumer Affairs Department, 100 Taurus Way, Bainbridge, Ga 39817. Please include a description of the claimed issue, along with your name, address, telephone number, model, serial number, proof of purchase, and date of purchase.

**FIREARMS MUST BE SHIPPED UNLOADED.** Double check the chamber of your firearm before shipping. If firearms are sent to Braztech in a loaded condition, we are required by law to notify the Federal authorities.

**DO NOT INCLUDE AMMUNITION** with your firearm. This is a violation of federal law. **DO NOT** include telescopic sights; custom grips, holsters, ammunition or other accessories with any firearm shipped to us.

When shipping Matched Pair or Matched Set models for repair, all barrels must be included with the firearm. Be sure to repackage the additional barrels in their shipping tubes to prevent damage to the finish and to the stocks during shipment. Braztech is not responsible for shipment damage.

# ROSSI

ALWAYS KEEP THE MUZZLE POINTED IN A SAFE DIRECTION.

## A WORD TO THE WISE

Most gun accidents happen because the shooter carelessly violates the single most important rule of safe gun handling: **Always keep the muzzle pointed in a safe direction!**

Important: **Do not discard.** keep this manual with your firearm. Upon change of ownership, transfer this manual with the firearm.



[WWW.ROSSIUSA.COM](http://WWW.ROSSIUSA.COM)

© Copyright 2017 Braztech International, L.C.  
Rossi is a registered mark of Amadeo Rossi, S.A.

The information in this manual is provided as guidelines and directions for the safe use of your firearm. Braztech and/or Rossi cannot be held responsible for the misuse, illegal or negligent use of our products.

We strongly encourage all firearms owners to observe all firearms safety rules.

**WARNING:** This product contains chemicals known to the State of California to cause cancer, or birth defects or other reproductive harm.

Keep this and all firearms and ammunition away from unsupervised children. Firearms safety is everyone's responsibility.

**Read Carefully Before Using Your Firearm**