

How to Install a LimbSaver Recoil Pad

Synthetic Stock:

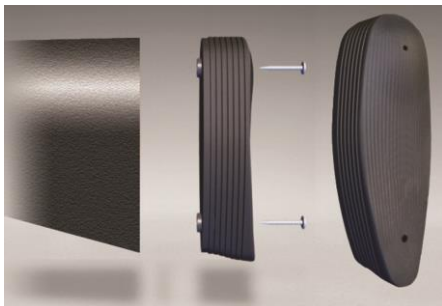
Use original screws. Wrong screw size may damage synthetic stocks!

Wood Stock:

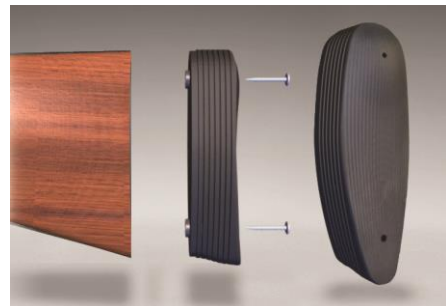
Flat stocks only! Curved stocks will require gunsmithing.

Installation Instructions:

- 1. Removal of existing recoil pad:** Lubricate a Philips screwdriver shaft with Armor All® or water. Remove the recoil pad using a Philips screwdriver through the two holes/slits located at the top of the recoil pad. If your pad has been glued on, please see a gunsmith.
- 2. Using the template:** Template can be found on packaging or can be printed from the web at <http://www.limbsaver.com/RecoilPadTemplateGuide.pdf>. Cut out the paper template with scissors. Center the template card on the gun stock. When the template is centered, hold the template firmly in place. Using a center punch, mark the screw hole locations through the paper template into the gun stock. If the screw holes do not line up, you can slot or elongate the screw holes on the bottom of the recoil pad plate an additional 3/16" towards the center of the pad (use a Dremel® tool with sanding attachment) to match the holes in your stock. This is regardless of wood or synthetic stocks. Please note: This only refers to the template recoil pads that are not already elongated or slotted.
- 3. Installation of the LimbSaver Recoil Pad:** Insert the screws through the small holes in the LimbSaver Recoil Pad. Line up the screws to the pre-drilled pilot holes in your gun stock. Tighten the screws to hold the recoil pad in place (snug but not tight). Adjust the recoil pad up/down, right/left to center the pad and tighten the screws firmly.



Synthetic



Wood