



HENRY®

Made In America, Or Not Made At All

HenryUSA™

Henry Side-Gate Lever Action X Models

Instruction Manual For All X Model Series Rifles and Shotguns



Important:
Study this instruction manual
carefully before you handle this firearm.

Made in America



IS A REGISTERED TRADEMARK
OF THE HENRY REPEATING ARMS COMPANY

TEL. **201-858-4400** | FAX. **201-858-4435**

WEBSITE. **www.henryusa.com**

WARNING: BEFORE USING FIREARM, READ AND FOLLOW THESE INSTRUCTIONS.

If there is anything you do not understand,
get help from someone qualified to teach the safe handling of firearms.

THE HENRY GUARANTEE

Thank you very much for spending your hard earned money to purchase a Henry. I certainly appreciate it and welcome you to the Henry family. As an owner of a Henry, you are backed by our lifetime warranty and my personal guarantee for 100% satisfaction. I will do what it takes to make certain you are happy with your purchase.

Sincerely,

Anthony Imperato

Henry Repeating Arms

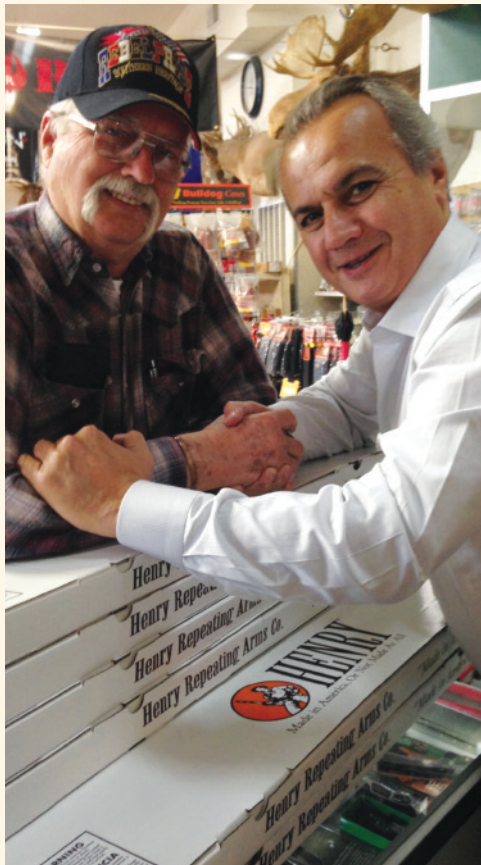
Telephone: 201.858.4400

Web: www.henryusa.com

We are confident that you'll enjoy and be proud to own any of our Henry firearms, well known for their reliability, accuracy, handsome looks and smooth action.

Our goal has and always will be to manufacture a line of classic, well-crafted firearms that every enthusiast would find readily affordable.

We take great pride in manufacturing our shotguns in the United States, hence our corporate motto "Made in America, or Not Made at All".



HENRY[®]
Made In America,
Or Not Made At All

Use the space below to record information about your new firearm.

Serial Number _____

Caliber _____

Purchase Price _____

Purchased From _____

Date of Purchase _____

Henry Repeating Arms Company
59 East 1st Street
Bayonne, NJ 07002

If you have any questions or comments regarding your new Henry firearm, please feel free to write or call us.

SIMPLE LIMITED LIFETIME WARRANTY ON ALL HENRY FIREARMS

It is our promise to you that as long as you own your Henry firearm, it will be free from defects in material and workmanship from the manufacturer. If you have a problem with your Henry firearm, we will fix it at no charge to you. Henry Repeating Arms shall repair, send replacement parts or replace the firearm with a valid warranty claim. If a complete replacement is necessary, the original firearm will not be returned. Henry RAC will provide repairs or replacement at no charge, but will not offer cash, credit, or refund.

WE RESERVE THE RIGHT TO REFUSE SERVICE ON FIREARMS THAT HAVE BEEN ALTERED, ADDED TO, OR SUBSTANTIALLY CHANGED. Removal of metal from the barrel, or modifications of the firing mechanism and/or operating parts, may lead to a refusal of service on such firearms. There will be a charge for parts and labor to return the firearm to original specifications.

DO NOT, UNDER ANY CIRCUMSTANCES, ALTER THE TRIGGER, "SAFETY" OR OTHER PARTS OF FIRING MECHANISM OF THIS OR ANY OTHER FIREARM. FAILURE TO OBEY THIS WARNING MAY RESULT IN INJURY OR DEATH.

NOTICE: Henry RAC shall not be responsible for injury, death, or damage to property resulting from either intentional or accidental discharge of this firearm, or from its function when used for purposes or subjected to treatment for which it is not designed.

Whether or not you are experienced in the safe handling of firearms, we urge you to read this entire instruction manual carefully. You must follow the safety instructions for your safety and the safety of others. Should you have any questions concerning the instructions in this manual, please call us at 201-858-4400.

WARNING: If you have little or no experience in the safe handling and operation of a firearm, we strongly urge you to take a firearms safety course from an NRA Certified Instructor or someone with equivalent qualifications before using this or any other firearm. You can contact the NRA Firearms Education and Safety Division at 703-267-1470 for the name of an instructor in your area, or contact your firearms dealer, law enforcement agency or local sportsman's club for training

Table of Contents

Gun Safety and Handling	4
Terminology	5
Specs	6
Ammunition	6
Shooting Cautions	7
Operating Instructions	
How To Use the Safety	8
Maintenance Before Use	8
How To Load Your Henry	8
How To Operate Your Henry	9
How To Unload Your Henry	9
Magazine Tube Plug	9
Scope Mount	10
Sights	10
Chokes	10
Malfunction	11
Cleaning, Maintenance & Storage	
How To Clean Your Henry	12
Maintenance Before Storage	12
Storage Safety	13
Illustration of Parts	15
Service and Repair	16
Socialize	17
History and Thank You	17

GENERAL GUN SAFETY HANDLING

Apply the following safety rules in every situation, with any kind of firearm:

ALWAYS TREAT EVERY FIREARM AS IF IT IS LOADED AND WILL FIRE. Do not take anyone's word that the firearm is unloaded - always check for yourself. Never pass your firearm to another person until the cylinder or action is open and you visually check that it is unloaded. Keep your firearm unloaded and safely stored when not in use.

ALWAYS BE SURE OF YOUR TARGET AND WHAT IS BEYOND. A bullet could travel through or past your target for up to 1 ½ miles. Always be sure your backstop is adequate to stop and contain bullets before beginning target practice so that you do not hit anything outside the range shooting area. If in doubt, don't shoot! Do not fire randomly into the sky.

NEVER SHOOT ACROSS A HIGHWAY OR ANOTHER ROADWAY.

ALWAYS POINT YOUR FIREARM IN A SAFE DIRECTION. NEVER point a firearm at anyone or anything you do not intend to shoot whether or not it is loaded. This is particularly important when loading, unloading, or field stripping the firearm. ALWAYS control the direction of the firearm; if it fires accidentally, injury, death, or damage to property can be avoided.

NEVER PLACE YOUR FINGER INSIDE THE TRIGGER GUARD OR ON THE TRIGGER UNLESS YOU INTEND TO FIRE. You should also take care to ensure that other objects do not touch the trigger.

NEVER USE ALCOHOL OR DRUGS BEFORE OR WHILE SHOOTING. Your vision, motor skills and judgment could be dangerously impaired, making your gun handling unsafe to you and to others. Further, do not use your firearm if you are on any medication which impairs, even slightly, your mental or physical ability.

ALWAYS SEEK A DOCTOR'S ADVICE IF YOU ARE TAKING MEDICATION. Be sure you are fit to shoot and handle your firearm safely.

NEVER SHOOT AT A HARD SURFACE SUCH AS A ROCK OR A LIQUID SURFACE SUCH AS WATER. A bullet may ricochet and travel in any direction to strike you or an object you cannot see, causing injury, death or damage to property.

NEVER DISCHARGE A FIREARM NEAR FLAMMABLE MATERIAL. Flame and sparks erupt from the firearm when discharged. They could start a fire or cause flammable liquids to explode.

ALWAYS BE AWARE OF POSSIBLE RISK FROM DROPPING YOUR FIREARM. Some parts of the mechanism could be damaged. You may not see the damage, but it could be severe. The firearm may discharge and cause injury, death, or damage to property. If your firearm has been dropped, have it examined by a competent gunsmith before using it again.

ALWAYS KEEP AND CARRY YOUR FIREARM EMPTY WITH THE HAMMER IN THE "SAFE" POSITION except when you intend to shoot, so that your firearm cannot be fired when you do not intend to fire it.

NEVER CROSS OBSTACLES SUCH AS FENCES OR STREAMS WITH A LOADED FIREARM. Always make certain your firearm is unloaded before crossing a fence, climbing a tree, jumping a ditch or approaching other obstacles.

NEVER TRANSPORT A LOADED FIREARM. Keep all firearms unloaded during transport, even when stored in a holster, gun case, scabbard or other container.

NEVER WALK, CLIMB, OR FOLLOW A COMPANION WITH YOUR FIREARM COCKED AND READY TO FIRE. When

hunting, hold your firearm so that you can always control the direction of the muzzle.

NEVER LEAVE A LOADED FIREARM UNATTENDED. Someone, especially a child, may fire it and cause injury, death, or damage to property.

ALWAYS INSTRUCT CHILDREN AND NON SHOOTERS TO RESPECT FIREARMS. If you teach your children to shoot or get them trained by a qualified instructor, be certain they know how to use the firearm properly and always supervise them closely. Always stress safety so that your children or others will not fire a rifle when or where it is unsafe to do so.

TERMINOLOGY AND DESCRIPTIONS

Congratulations on your purchase of your Henry Side-Gate Lever Action X Model.

This lever action is a dependable hunting rifle loaded with performance and accuracy features that have been a proven platform for success. Like every Henry rifle, it's 100% American made with its sleek black pistol grip stock and forearm. Each of these rifles come with a fully adjustable fiber optic rear sight and fiber optic fronts. Receivers are tapped for scope mounts and the 19.8" or 17.4" barrels have a full length tubular magazine, machined with the traditional high quality button rifling you have come to depend on.

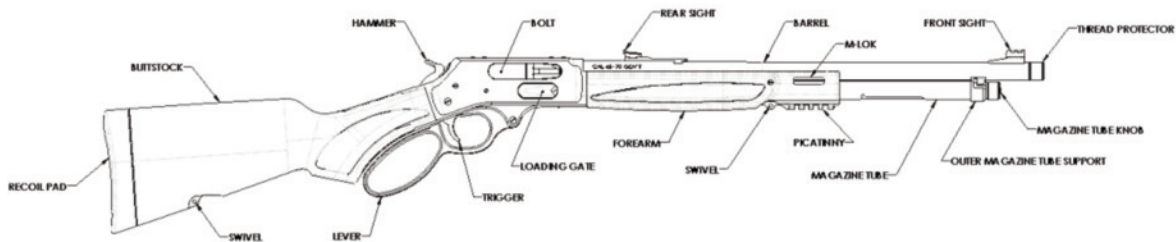
The X Model Shotgun comes with a side loading gate, large loop lever, front fiber optic bead screw in invector choke, picatinny rail and the receiver is tapped for a scope mount.

The X Model Rifle carries a side loading gate, threaded barrel, fiber optic sights, picatinny rail, M-lok and large loop lever.

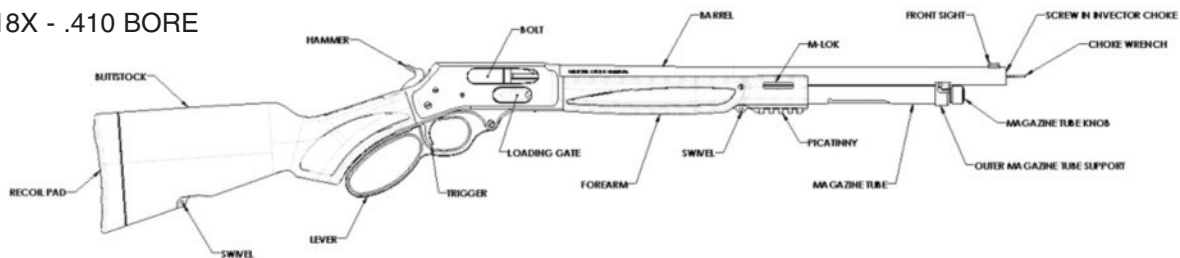
They carry sling swivel studs and our centerfire in-hammer transfer bar make for convenient and safe carry with the hammer down on a loaded chamber.

HENRY X MODEL, SIDE GATE LEVER ACTION

H010X - .4570, H012X - .44MAG/.44SPL, H012CX - .45 COLT, H012MX - .357 MAG/.38 SPL



H018X - .410 BORE



SERIAL NUMBER

The serial number is located on the underside of the receiver. Record this number in this manual for future reference.

SPECS

Caliber

H010X - .45-70
H018X - .410 Bore
H012X - .44 Mag/.44 Spl
H012CX - .45 Colt
H012MX - .357 Mag/.38 Spl

Capacity

.45-70 – 4 rounds
.410 Bore – 5 rounds
.44 Mag/.44 Spl – 7 rounds
.45 Colt – 7 rounds
.357 Mag/.38 Spl – 7 rounds

Receiver

Steel

Barrel Length

.45-70 – 19.8”
.410 Bore – 19.8”
.44 Mag/.44 Spl – 17.4”

.45 Colt – 17.4”
.357 Mag/.38 Spl – 17.4”

Rate of Twist

.45-70 – 1:20
.410 Bore – Smooth W/Choke
.44 Mag/.44 Spl – 1:20
.45 Colt – 1:16
.357 Mag/.38 Spl – 1:16

Overall Length

.45-70 – 38.6”
.410 Bore – 38.6”
.44 Mag/.44 Spl – 36.3
.45 Colt – 36.3”
.357 Mag/.38 Spl – 36.3”

Weight

7.5 lbs.

Rear Sight

On all Rifle versions -
Fully Adjustable Fiber Optic
.410 Bore - Not Included

Front Sight

.45-70 – Fiber Optic
.410 Bore – Fiber Optic
.44 Mag/.44 Spl – Fiber Optic
.45 Colt – Fiber Optic
.357 Mag/.38 Spl – Fiber Optic

Scope Mount

.45-70 & .410 Bore - Drilled and
Tapped for Weaver 63B
.44 Mag/.44 Spl, .45 Colt, & .357
Mag/.38 Spl - Drilled & Tapped for
BB-RSM

Stock

Black Synthetic Pistol Grip

Buttplate/pad

Recoil Pad

Length of Pull

14”

Safety

Transfer Bar

AMMUNITION FOR RIFLES

Your Henry X Model Side Gate Lever Action comes in the following calibers:

.45-70
.44 Mag/.44 Spl
.45 Colt
.357 Mag/.38 Spl

THE CALIBER OF YOUR NEW X MODEL SIDE-GATE LEVER ACTION IS INSCRIBED ON THE TOP OF THE RECEIVER AS WELL AS ON THE BARREL.

ALWAYS HAVE ADEQUATE VENTILATION IN THE AREA THAT YOU DISCHARGE A FIREARM. LEAD EXPOSURE CAN OCCUR FROM DISCHARGING FIREARMS IN POORLY VENTILATED AREAS, CLEANING FIREARMS OR HANDLING AMMUNITION.

Lead is a substance that has been known to cause

birth defects, reproductive harm and other serious injury. Wash hands thoroughly after exposure.

AMMUNITION FOR SHOTGUNS

The Henry Lever Action X Model Shotgun .410 Bore is chambered for use of **2 ½” SHOTGUN SHELLS ONLY**. Use of any other ammunition can cause excess pressure and possible serious injury. The gauge is inscribed on the barrel near the receiver.

- Factory .410 bore shotgun shells only.
- Chambered for 2 1/2" shells only.
- Never attempt to load 3" shells.
- Barrel has a smooth bore with no rifling and removable choke with invector style threads.
- Slugs are not recommended with the factory full choke.
- Other factory chokes are available on Henry Pride at www.henrypride.com

AMMUNITION SELECTION

ALWAYS USE THE CORRECT AMMUNITION FOR YOUR PARTICULAR FIREARM. Henry Repeating Arms Firearms are designed to function with a variety of brands and types of factory manufactured ammunition in the appropriate caliber, but not all ammunition produces the same result. Be sure the only ammunition you carry correctly matches the gauge or caliber you are shooting. Never use non-standard, reloaded, or "hand-loaded" ammunition which has not been subjected to internal ballistic pressure testing. Henry RAC recommends that after you read and understand this manual, you go to the range and fire different ammunition which is appropriate to the caliber of your firearm. Once you find the ammunition which functions best, keep using it.

RANGE AND SHOOTING CAUTIONS

ALWAYS DESIGNATE A KNOWLEDGEABLE AND RESPONSIBLE PERSON TO BE IN CHARGE TO MAINTAIN SAFETY CONTROL WHEN A GROUP IS FIRING ON A RANGE. Obey their commands so that discipline is maintained to reduce the possibility of accidents.

ALWAYS CARRY YOUR FIREARM EMPTY WITH THE ACTION OPEN WHILE ON A RANGE until preparing to fire and keep it pointing towards the backstop when loading, firing, and unloading to eliminate the risk of injury, death or damage to property.

ALWAYS KEEP THE HAMMER IN THE UNCOCKED POSITION UNTIL YOU ARE READY TO FIRE. This will minimize the risk of an accidental discharge.

ALWAYS WEAR EYE AND EAR PROTECTION SPECIFIED FOR USE WITH FIREARMS. Flying particles could damage eyes and cause blindness. Without ear protection, the noise of even one shot from your rifle and from other guns close to you could leave a "ringing" in the ears for some time after firing and the cumulative long term effect could be permanent hearing loss. Make sure others in the vicinity of where you are shooting are doing so as well.

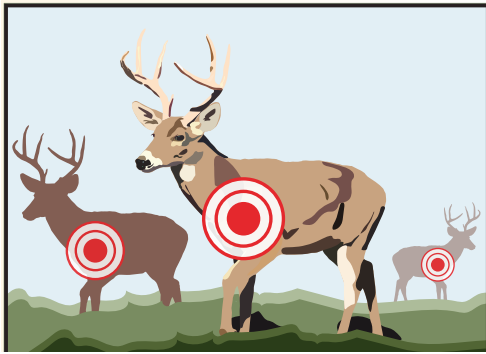
ALWAYS KEEP CLEAR AND KEEP OTHERS CLEAR OF THE EJECTION PORT. Spent ammunition is ejected with enough force to cause injury. The ejection port must also be unobstructed by your hand to insure safe ejection of spent rounds. Never place fingers in ejection port - they could be burned by hot metal or injured by the bolt moving forward.

NEVER PUT YOUR FINGER INSIDE THE TRIGGER GUARD UNTIL YOU ARE AIMING AT A TARGET AND READY TO SHOOT. This will prevent you from firing the firearm when it is pointing in an unsafe direction.

NEVER JOKE AROUND OR ENGAGE IN "HORSEPLAY" WHILE HANDLING YOUR FIREARM. Doing so could cause an accidental discharge.

TRANSFER BAR SAFETY

This firearm is designed with an ultra-safe patented Transfer Bar Safety Mechanism. This safety system prevents the gun from being fired under all circumstances, except when the hammer is fully cocked and the trigger is pulled. If the hammer is fully cocked and the trigger is pulled, the gun would fire as normal. However, if the hammer is fully cocked and is accidentally dislodged by some other means other than the trigger being pulled, the gun will not fire. If the hammer is in the process of being cocked and is accidentally released and dropped into the fired down position, before it is fully cocked, the gun will not fire. This firearm can be safely carried fully loaded with the hammer in the fired down resting position. Please note that this firearm does not have a half cock safety position nor a crossbolt safety. If you do not have a full understanding of how the safety system works, please call us immediately at 201-858-4400 and ask for technical assistance.



MAINTENANCE BEFORE USE

Before using your firearm for the first time, it should be cleaned. (See the cleaning instructions.) Your firearm was treated at the factory with either a preservative or oil to protect it against corrosion during shipping and storage. Preservative and oil should be wiped from the bore, chamber and exposed areas using a clean swab or patch before using the firearm.

Purchase cleaning supplies that are specifically designated for your type and caliber of firearm. Many suppliers offer these in kit form for your convenience. Follow the instructions provided. Whenever your firearm has been exposed to sand, dust, extreme humidity, water or other adverse conditions, it should be cleaned and lubricated.

HOW TO LOAD YOUR HENRY RIFLE (2 WAYS TO LOAD)

To Load the Chamber:

The Side-Gate can be single loaded. With an empty magazine, place one cartridge of the correct caliber through the ejection port with the bullet pointed toward the muzzle. Close the bolt by rotating the lever fully rearward, locking the cartridge in the chamber.



WARNING! The firearm is now loaded with a cartridge in the chamber.

1. To Load the Magazine:

With the hammer down and the chamber empty, close the bolt by rotating the lever fully rearward. Insert a cartridge, bullet end first, by pushing the loading gate with the nose of the cartridge.

NOTE: Always check the cartridge for the correct designation before loading the firearm.

2. To Load the Magazine Tube

This firearm also uses a tubular feed brass inner magazine tube to hold cartridges. Open the action by rotating the lever down and forward until the bolt is fully rearward. Cartridges are loaded into the cutout in the blued outer magazine tube located underneath the barrel. Important - when loading the action must be closed with the hammer in the uncocked position (fired down position). Rotate the inner magazine tube to disengage. Pull the inner magazine tube out until the follower (the black part at the end of the inner magazine tube) clears the loading port in the outer magazine tube. You can either remove the brass inner magazine tube completely or keep it positioned in the outer magazine tube just past the loading port. With the muzzle pointed upward, insert the rimmed end of the cartridges into the loading port in the outer magazine tube and allow them to slide down towards the action. Do not exceed the capacity of the magazine. Next, push the inner magazine tube back down into position, and lock it into place. The rifle is now ready for operation.

HOW TO OPERATE YOUR HENRY X MODEL LEVER ACTION RIFLE

The rifle will be ready to fire by moving the hammer to the cocked position and pulling the trigger. If you are not ready to fire, place your thumb on the hammer and disengage the hammer by pulling the trigger slightly rearward. Immediately release the trigger while still holding the hammer and bring the hammer into the fired down position.



If you do not fire all the cartridges in the magazine, be sure to put the hammer in the safe position until you are ready to shoot again. **UNTIL A VISUAL CHECK HAS BEEN MADE, YOU SHOULD ASSUME THAT A LIVE ROUND REMAINS IN THE CHAMBER.**

HOW TO UNLOAD THE MAGAZINE AND CHAMBER OF YOUR HENRY X MODEL LEVER ACTION RIFLE

To unload the magazine and chamber, the hammer should be resting in the fired down position. With the rifle pointing upward, withdraw the inner magazine tube. Tip the gun downward, allowing cartridges to slide out into a container. Replace the inner magazine tube. Open the action again, by cycling the lever, to make certain that there are no cartridges in the chamber. Cycle the action multiple times to insure that no live rounds remain in the chamber.

NOTE: The lever must be completely closed and then fully opened to insure proper feeding and ejecting of all the cartridges.

MAGAZINE TUBE PLUG FOR .410 BORE SHOTGUN INSTALLATION OPTION (SOLD SEPARATELY)

WARNING: A magazine plug which limits the magazine capacity to two (2) shells must be installed according to the Federal Migratory Bird Treaty Act and some state laws. Check with your local Fish & Game Commission to determine whether a magazine plug is required in your circumstances.

The Magazine Tube Plug is used to limit the number of shot shells to a quantity of 2 inside the magazine tube of your firearm.

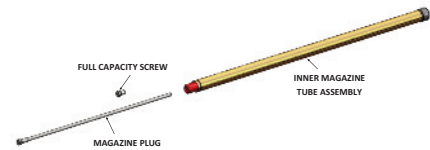
To use the Magazine Tube, first check the chamber and the magazine to make sure there are no shells in the

firearm. Unscrew and remove the full capacity screw, then place the Magazine Plug in the end of the Inner Magazine Tube.

Replace and tighten the full capacity screw.

Do not use the inner magazine tube assembly without either the full cap screw or the magazine plug installed.

For full capacity loading, remove the magazine plug and re-install the full capacity screw. This can be ordered at www.henrypride.com.



SCOPE MOUNT INSTALLATION (FOR RIFLE & SHOTGUN)

To install a scope mount, first check to see that the rifle is unloaded, then remove the filler screws on top of the receiver. Once the filler screws are removed, use the screws that come with your scope mount kit to attach the mount.

SIGHTS & SIGHT ADJUSTMENTS (FOR RIFLE ONLY)

Your X Model is equipped with a Fully Adjustable Fiber Optic rear sight. The rear sight is adjustable for elevation (shooting high and low) and for windage (shooting left and right).



HIGH OR LOW (ELEVATION ADJUSTMENT)

In order to shoot higher, you need to raise the rear sight. In order to shoot lower, you need to lower the rear sight. In order to raise or lower the rear sight, you need to adjust the set screw closest to the Fiber Optic Tubes. Turning the screw clockwise raises and turning counterclockwise lowers.



LEFT OR RIGHT (WINDAGE ADJUSTMENT)

To adjust your rifle for windage (left/right), we suggest that you move the rear sight to the left or right as desired. The rear sight sits in a dovetail slot cutout in the barrel. Current models will have a screw on the front of the rear sight assembly. This screw must first be loosened, prior to attempting adjustment. To adjust your rifle for windage use a plastic mallet, or a hammer and a brass wedge to tap it in the direction you want your shots to hit.

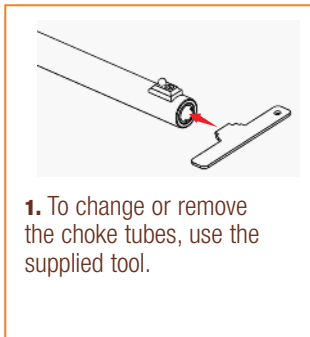
For example: if you are shooting to the left, you need to tap the sight over to the right to correct the point of impact. Conversely, if you are shooting to the right then you will need to tap the rear sight over to the left.

Your Henry X Model Shotgun is equipped with a Fiber Optic Bead Front Sight.

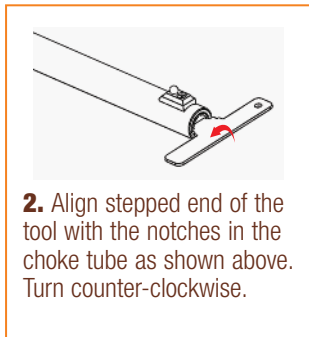
INSTALLING A NEW CHOKE TUBE

1. Start the new choke tube into the muzzle with the threaded end entering the barrel first and the 4 notches pointing away from the barrel.
2. Turn clockwise, starting threads by hand.
3. Use supplied tool to tighten.

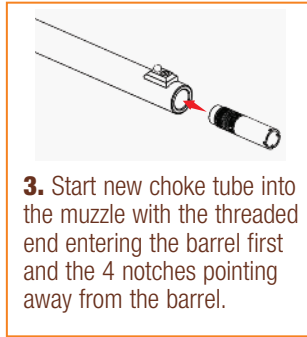
Flush fitting choke tubes fit flush with the barrel when properly installed. Do not use excessive force when installing. Choke tube tightness should be checked periodically to avoid damage to the choke, firearm, and to prevent injury to you or those around you.



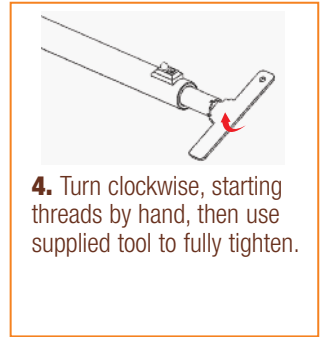
1. To change or remove the choke tubes, use the supplied tool.



2. Align stepped end of the tool with the notches in the choke tube as shown above. Turn counter-clockwise.



3. Start new choke tube into the muzzle with the threaded end entering the barrel first and the 4 notches pointing away from the barrel.



4. Turn clockwise, starting threads by hand, then use supplied tool to fully tighten.

NEVER FIRE YOUR SHOTGUN WITHOUT A CHOKE IN PLACE. FIRING WITHOUT A CHOKE CAN DAMAGE THE THREADS FOR THE CHOKE.

Inspect choke tubes periodically to insure they are properly installed and in good condition. Pay special attention to the threaded end of the choke tube to be certain it is not deformed or dented. Never fire this firearm without a choke tube properly installed. Failure to do so will damage the precision threads on the inside of the barrel. Firing this firearm with loose choke tubes may lead to damage to the choke tube and barrel, as well as serious personal injury to you or those around you.

MALFUNCTION AND TROUBLESHOOTING

NEVER USE YOUR FIREARM IF IT FAILS TO FUNCTION PROPERLY, AND NEVER FORCE A JAMMED ACTION. Forcing the action could make the round explode, causing serious injury, possible death, or severe damage to your firearm or other property.

FAILURE TO FIRE. A misfire occurs when the firing pin strikes the primer and it does not fire. **IF THE FIREARM FAILS TO FIRE DO NOT PUT IT DOWN OR OPEN THE ACTION. ALWAYS HOLD THE FIREARM, KEEPING IT POINTED IN A SAFE DIRECTION AND WAIT 30 SECONDS. IF A HANGFIRE (SLOW IGNITION) HAS OCCURRED, THE ROUND WILL FIRE WITHIN 30 SECONDS.**

If the round does not fire, remove the ammunition, eject the round and examine the cartridge. If the firing pin indent on the primer is light or non-existent, have the firearm examined by a competent gunsmith before firing again. If the firing pin indent on the rim appears normal (in comparison with similar previously fired rounds) assume you have faulty ammunition. Segregate the misfired round from other live ammunition and empty cases, reload, and carry on firing.

FAILURE TO EXTRACT (FTE). This is when the firearm discharges the round and fails to extract the spent round from the chamber. This could happen because of a bad extractor or bad/damaged casings.

FAILURE TO FEED (FTF). This is simply when the firearm fails to feed another round into the chamber. Put the lever in the open position and clear the ejection port.

NOTE: The ejection port should face the ground; this will allow the round to easily fall out (gravity is your friend here). This will work for both left and right handed shooters.

CLEANING, STORAGE AND MAINTENANCE

CLEANING SAFETY PRECAUTIONS

WARNING: BEFORE PERFORMING CLEANING PROCEDURES, MAKE SURE THE HAMMER IS IN THE FIRED-DOWN POSITION, WHICH ALLOWS YOUR SAFETY TO FUNCTION AS DESIGNED. OPEN THE ACTION AND MAKE CERTAIN YOUR FIREARM IS COMPLETELY UNLOADED. KEEP THE MUZZLE POINTED IN A SAFE DIRECTION. FAILURE TO FOLLOW THESE WARNINGS COULD RESULT IN SERIOUS INJURY OR DEATH.

KEEP ALL AMMUNITION AWAY FROM THE CLEANING AREA. NEVER TEST THE MECHANICAL FUNCTION OF YOUR RIFLE WITH LIVE AMMUNITION. FAILURE TO FOLLOW THESE WARNINGS COULD RESULT IN SERIOUS INJURY OR DEATH.

NOTICE - RIFLE! It is very important that the chambers of your rifle be cleaned thoroughly and promptly after shooting. Do not leave discharged (empty) cartridges in the chambers for any length of time, as the chemical composition of many cartridges contain moisture which can "sweat" onto the chambers' surfaces, and possibly cause corrosion and rust.

NOTICE - SHOTGUN! It is very important that the chambers of your shotgun be cleaned thoroughly and promptly after shooting plastic shotshells. Do not leave discharged (empty) shells in the chambers for any length of time, as the chemical composition of many plastic shells contain moisture which can "sweat" out of the shell and onto the chambers' surfaces, and possibly cause corrosion and rust.

CARE & CLEANING OF CHOKE TUBE (SHOTGUN ONLY)

The precision threads on your choke tube should be kept clean and lightly oiled at all times. During cleaning of the barrel, be certain a choke tube is properly installed. This will avoid residue build-up on threads.

HOW TO CLEAN YOUR HENRY FIREARM

DO NOT USE AN AGGRESSIVE SOLVENT ON THE RECEIVER COVER. WE SUGGEST THAT YOU USE BIRCHWOOD CASEY GUN SHEATH OR A MILD SOLVENT SUCH AS HOPPE'S NO. 9, KLEENBORE OR BREAKFREE.

Regular cleaning is important in order for your gun to operate correctly and safely. Taking proper care of it will also maintain its value and extend its life. Your gun should be cleaned every time it is used.

In order to clean it, we suggest that you first open the action by cycling the lever down/forward. Using a brand name cleaning kit, run the cleaning rod down the bore from the breech towards the muzzle. Clean the bolt and oil it before replacing. To reassemble, simply do the reverse.

MAINTENANCE BEFORE STORAGE

When storing your firearm, do not encase it in anything that will attract or hold moisture, for example, leather or heavy cloth. Also, do not store firearms with a plug inserted in the barrel because this can be a contributing factor to moisture accumulation.

If your firearm is to be stored for an extended period, the bore, chamber and internal surfaces should be oiled with a high-quality lubricating oil or preservative intended for firearms. The external parts; receiver, bolt and

barrel should be coated with an anti-rust oil.

Before using your firearm again, be sure to clean it. Every time you clean your firearm, check it for signs of wear. If wear is noted, do not use the firearm, have it checked by a qualified gunsmith.

Make sure your firearm is in good mechanical condition before firing it. Periodically have your firearm checked for signs of erosion, cracking, or wear by the factory or a factory certified gunsmith.

STORAGE SAFETY AND PRECAUTIONS

NEVER LOCK A LOADED FIREARM AND NEVER LOAD A LOCKED FIREARM!

ALWAYS CHECK TO MAKE SURE YOUR FIREARM IS NOT LOADED BEFORE CLEANING, STORING, TRANSPORTING IT, LAYING IT DOWN, OR HANDING IT TO ANOTHER PERSON so that it cannot be fired when it is unsafe to do so.

ALWAYS KEEP AND STORE YOUR FIREARM AND AMMUNITION IN SEPARATE, LOCKED LOCATIONS, OUT OF REACH AND SIGHT OF CHILDREN AND UNTRAINED PERSONS. Safe and secure storage of your firearm and ammunition are your responsibility.

NEVER LEAVE THE KEY TO THE LOCK FOR YOUR FIREARM WITH THE STORED FIREARM!

NEVER ASSUME THAT A "HIDING" PLACE IS A SECURE STORAGE METHOD. Others may be aware of your storage location or come upon it by chance. It is your personal responsibility to use common sense when storing your firearm and ammunition and to always make sure they are not accessible to children or other unauthorized persons.

Note: Do not store your firearm in an air-tight container, and do not seal or attempt to seal the barrel to exclude dust, as the internal steel surface is more likely to rust or corrode by doing this.

BEWARE OF BARREL OBSTRUCTIONS. Be sure the barrel is clear of obstructions before shooting. Mud, water, snow or other objects may inadvertently lodge in the barrel bore. A small obstruction can cause a dangerous increase in pressure and may damage your firearm and cause injury to yourself and others.

BEFORE CHECKING FOR A BARREL OBSTRUCTION, BE CERTAIN YOUR FIREARM IS COMPLETELY UNLOADED. After assuring yourself that the firearm is completely unloaded, open the action and look through the barrel to be sure it is clear of obstructions. If an obstruction is seen, no matter how small it may be, clean the bore with a cleaning rod and patch as described in the **CLEANING** section of this owner's manual.

BE SURE ALL ACCESSORIES, SUCH AS SLINGS, SCOPES AND OTHER ACCESSORIES ARE COMPATIBLE WITH YOUR PARTICULAR FIREARM AND THAT THE ACCESSORIES DO NOT INTERFERE WITH ITS SAFE OPERATION.

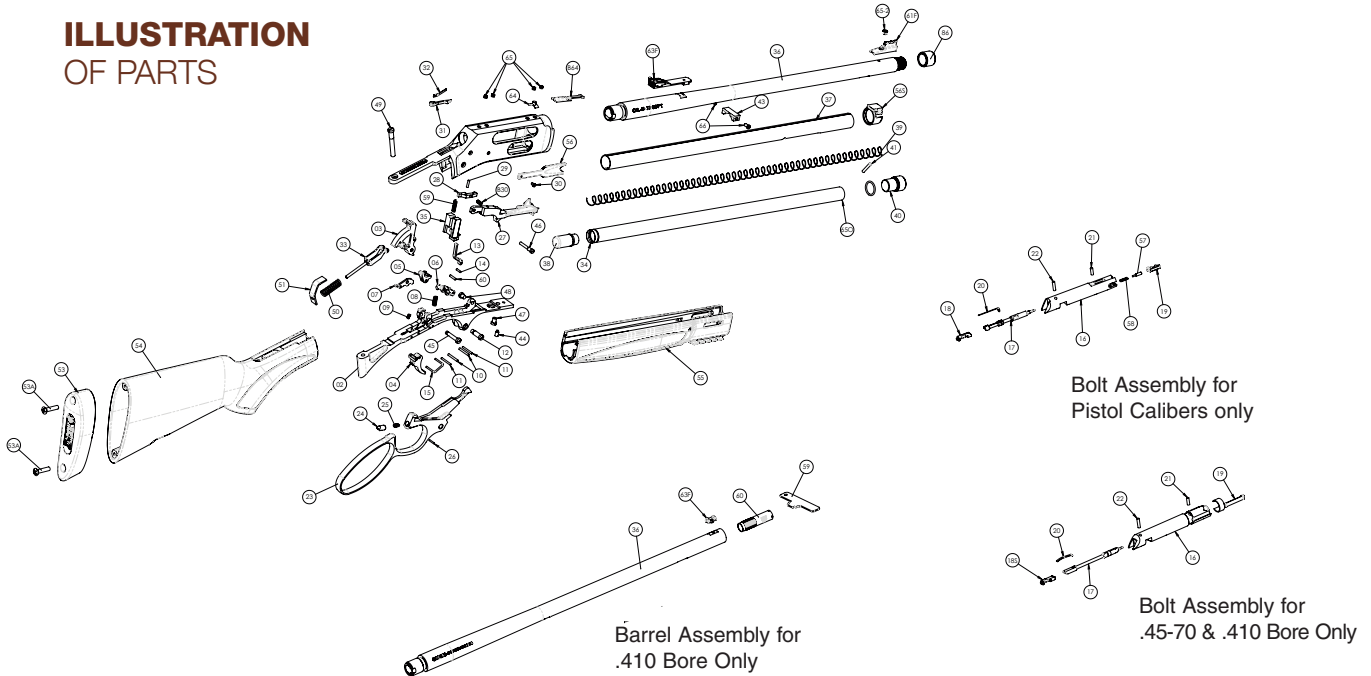
It is your responsibility to understand and follow all of the instructions in the safety manual that accompanied your firearm, as well as those which may be supplied with your ammunition and any accessory.

NEVER DISASSEMBLE YOUR FIREARM BEYOND THE FIELD STRIPPING PROCEDURE OUTLINED IN THIS MANUAL. Improper disassembly or reassembly of your firearm may be dangerous and can lead to serious injury or death.

NEVER MANIPULATE, ADJUST OR CHANGE ANY OF THE INTERNAL COMPONENTS OF YOUR FIREARM UNLESS SPECIFICALLY INSTRUCTED TO DO SO IN THIS MANUAL. Improper manipulation of any other internal component may affect the safety and reliability of your firearm and may cause serious injury or death.

NEVER ALLOW ANY ALTERATION OR REPLACEMENT OF PARTS IN YOUR FIREARM UNLESS PERFORMED BY A QUALIFIED GUNSMITH USING AUTHORIZED PARTS. If you do otherwise, improper functioning of your firearm may occur and serious injury or death and damage to property may result.

ILLUSTRATION OF PARTS



LIST OF PARTS

01	Receiver
02	Trigger Guard Plate
03	Hammer
04	Trigger
05	Sear
06	Rocker
07	Trigger Lock
08	Sear Rocker Spring
09	Trigger Lock Spring
10	Sear Trigger Pin
11	Lever Detent Trig. Lock Pin
12	Lever Screw
13	Transfer Bar
14	Transfer Bar Pin
15	Trigger Rocker Link
23	Lever
24	Lever Plunger
25	Lever Plunger Spring
26	Lever Plunger Pin
27	Carrier
28	Carrier Dog
29	Carrier Pin
30	Screw Loading Gate
30B	Carrier Dog Pin
31	Ejector
32	Ejector Spring
33	Mainspring Yoke Ass'y
34	Inner Magazine Tube
35	Locking Bolt
36#	Barrel

37	Outer Magazine Tube
38	Follower
39	Inner Magtube Spring
40	Knob Magazine Tube
41	Magazine Tube Knob Pin
43	Forearm Support
44	Outer MagTube Ret. Screw
45	Hammer Screw
46	Carrier Screw
47	Trigger Guard Plate Screw
48	Trigger G_Plate Sup Screw
49	Tang Screw
50	Main Spring
51	Main Spring Seat
53	Recoil Pad
53A	Recoil Pad Screw
54	Buttstock
55	Forearm
56S	Outer Mag Tube Support
56	Loading Gate
59	Locking Bolt Spring
60	Mainspring Yoke Pin
61F	Front Sight
63F	Rear Sight
64	Insert Receiver (.45-70 & .410 Only)
64B	Insert Receiver (.357 Only)
65	Dummy Screw
65-2	H14-65-2
650	O-Ring
66	Forearm Screw

68 Thread Protector

BARREL ASM. .410 ONLY

36	Barrel
59	Choke Tube Wrench
60	Choke
63F	Front Sight

BOLT ASM. 45-70 & .410 ONLY

16	Bolt
17	Front Firing Pin
18S	Rear Firing Pin
19	Extractor
20	Rear Firing Pin Spring
21	Pin, Front Firing Pin
22	Pin, Rear Firing Pin
33	Main Spring

BOLT ASM. PISTOL CALIBERS ONLY

16	Bolt
17	Front Firing Pin
18	Rear Firing Pin
19	Extractor
20	Firing Pin
21	Pin, Front Firing Pin
22	Pin, Rear Firing Pin
57	Extractor Pin
58	Extractor Spring

GUN PARTS

An illustration and list of part names are included in this manual. Please note that not all parts are available for sale. Those parts which are available should be installed by a licensed gunsmith. When ordering parts, please give part name and part number.

Important: If you make unauthorized adjustments or use unauthorized parts, Henry Repeating Arms Company will not assume responsibility for the proper functioning of the firearm.

THIS GUN IS MANUFACTURED TO PERFORM PROPERLY WITH THE ORIGINAL PARTS AS DESIGNED. IT IS YOUR DUTY TO MAKE SURE ANY PARTS YOU BUY ARE INSTALLED CORRECTLY AND THAT NEITHER REPLACEMENTS NOR ORIGINALS ARE ALTERED OR CHANGED. THIS IS WHY WE SAY TAKE IT TO A LICENSED GUNSMITH STATION. YOUR GUN IS A COMPLEX TOOL WITH MANY PARTS THAT MUST RELATE CORRECTLY TO OTHER PARTS. PUTTING A GUN TOGETHER WRONG OR WITH MODIFIED PARTS CAN RESULT IN A DAMAGED GUN, DANGER, AND INJURY OR DEATH TO YOU AND OTHERS THROUGH MALFUNCTION. ALWAYS LET A QUALIFIED GUNSMITH WORK ON YOUR GUN AND CHECK ANY WORK YOU THINK WAS NOT PERFORMED BY A GUNSMITH.

SERVICING AND REPAIR

If you believe that your Henry shotgun requires repair or adjustment, we suggest that you first contact our Customer Service by visiting the “Contact Us” page on our website, or by phone at 201.858.4400. It may be a problem that we can resolve by phone or by sending a replacement part. For international customers please visit the “Contact Us” page on our website for instructions.

In the unlikely event that your firearm requires adjustments or repair, please make certain that it is unloaded and send it to us at the following address:

HRAC
107 W. Coleman Street
Rice Lake, WI 54868

Att: Repair Dept.

Enclose an explanation of the problem in as much detail as possible.

Make certain to include your complete name, address, phone number and serial number. Make sure your firearm is packaged to prevent it from being damaged. The package should be insured to protect against LOSS OR THEFT.

DO NOT INCLUDE "HENRY REPEATING ARMS" IN THE ADDRESS ON THE PACKAGE, IN ORDER TO PREVENT AN INQUISITIVE THIEF FROM BEING ATTRACTED TO IT BY SUCH INFORMATION.

YOU CAN USE THE ORIGINAL BOX FOR RETURN, HOWEVER, YOU SHOULD MAKE SURE IT IS WRAPPED IN A BROWN OR OTHER COLORED PAPER AS TO NOT INDICATE THAT THE BOX CONTAINS A FIREARM. THIS HELPS TO MAINTAIN THE CONFIDENTIALITY OF YOUR RIFLE TO ENSURE IT GETS BACK TO US SAFELY.

NEW PRODUCTS FROM HENRY

Henry Repeating Arms Company will endeavor to introduce and manufacture other fine firearms, all made in America, of high quality and at affordable prices.

Telephone: **201-858-4400** • Fax: **201-858-4435** • Website: **www.henryusa.com**

SOCIALIZE WITH HENRY AND HENRY OWNERS

Keep up to date with new inventions and products from Henry as well as meet other Henry owners around the country by joining the conversation and liking our social media accounts:

 www.facebook.com/henryrepeating

 @Henry_Rifles

 @HenryRifles

 www.youtube.com/c/HenryriflesUSA

Be the first to know about new products and events by subscribing to our e-mail list: www.henryusa.com/maillinglist

HENRY CUSTOMER PHOTOS

You may already be famous, but if not, we invite you to send a photo with your Henry for a possible website appearance to: info@henryusa.com

HENRY ACCESSORIES

Made in America, just like our rifles! Find apparel, slings, scope mounts, gun cases, display cases and more at www.henrypride.com

History and Thank You



Benjamin Tyler Henry.
His invention: The Henry Rifle.

Thank you for purchasing your new Henry Firearm. We are proud to have crafted this firearm for you in the great tradition of the Henry Repeating Rifle which dates back to 1860 when the first effective, lever-action repeating rifle was developed by Benjamin Tyler Henry. The lever action is America's unique contribution to international firearms design; We go to great lengths to provide the highest quality of design and craftsmanship for each and every one of our American-Made firearms. You are now a part of the Henry family, and we are thankful to have your support. Your new Shotgun should provide you and your family with many years of safe enjoyment and pride of ownership.

It is imperative that these cautions and operating instructions be thoroughly studied and understood before using your new firearm, in order to ensure proper and safe gun handling. Failure to follow these cautions, warnings and operating instructions could result in damage to your gun or to other property or could result in injury or death to yourself or to others.