

# VRBP-100 MAG FED SHOTGUN

## USER'S MANUAL

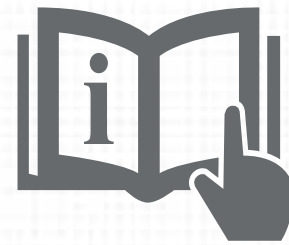


WARNING: READ THE INSTRUCTIONS AND SAFETY PRECAUTIONS  
IN THIS MANUAL CAREFULLY BEFORE USING THE FIREARM.

**RTIA**  
**IMPORTS**

# ROCK ISLAND ARMORY

## USERS MANUAL VRBP-100 MAG FED SHOTGUN SAFETY, INSTRUCTION AND PARTS MANUAL



As a responsible owner of this firearm, you must read the instructions and warnings in this manual carefully. Before using this firearm, make sure you understand thoroughly the contents of this manual.

This manual must always be in the firearms carrying case whenever the owner/user brings it or when it transfers ownership. A copy of this manual is available upon request from:

### **RIA Recommendation For Semi Auto Shotgun Break In Procedures**



Quality shotshells only  
2 3/4 minimum, preferred 3 dram shotshell to be used  
Minimum 1 1/8 oz of shot  
Minimum of 50 rounds before trying a lighter load

*ARMSCOR PRECISION INTERNATIONAL  
150 N Smart Way, Pahrump NV 89060  
E-mail: [support@armscor.com](mailto:support@armscor.com)*

# TABLE OF CONTENTS

- 1 Statement of Liability
- 1 State-By-State Warnings
- 2 Safety Precautions
- 3 Important Warnings

## HEALTH & SAFETY

- 4 Tech Specs
- 5 Basic Parts
- 6 Exploded Views

## ABOUT THE FIREARM

- Operating Instructions
- Disassembling the Shotgun.....7

- Usage of Chokes and Tubes 10

- Ordering Parts 11

- Warranty 12

## MAINTENANCE



# 01 | STATEMENT OF LIABILITY

## STATEMENT OF LIABILITY

This shotgun is classified as a firearm or dangerous weapon. It is expressly understood that we assume no liability for its resale or unsafe handling under local laws and regulations. Armscor assumes no responsibility for physical injury or property damage resulting from either intentional or accidental discharge, or for the function of the firearm subjected to influence beyond their control. Armscor will honor no claims which may result from careless handling, unauthorized adjustments, defective or improper ammunition, corrosion or neglect. Examine your firearm carefully at the time of purchase. It should be forwarded immediately to the factory or its sales agent if any adjustment of any kind of required.

### State-By-State Warnings -



#### CALIFORNIA STATE WARNING

*CHILDREN ARE ATTRACTED TO AND CAN OPERATE FIREARMS THAT CAN CAUSE SEVERE INJURIES OR DEATH. PREVENT CHILD ACCESS BY ALWAYS KEEPING FIREARMS LOCKED AWAY AND UNLOADED WHEN NOT IN USE. IF YOU KEEP A LOADED FIREARM WHERE A CHILD OBTAINS AND IMPROPERLY USES IT, YOU MAY BE FINED OR SENT TO PRISON. IT IS UNLAWFUL TO USE A MAGAZINE WITH A CAPACITY OVER 10 ROUNDS.*



#### MASSACHUSETTS STATE WARNING

*IT IS UNLAWFUL TO CARRY ANY MAGAZINE OR BELT WHICH HOLDS MORE THAN TEN ROUNDS, UNLESS AUTHORITY IS GRANTED BY THE BOSTON POLICE COMMISSIONER. IT IS UNLAWFUL TO STORE OR KEEP A FIREARM, RIFLE, SHOTGUN OR MACHINE GUN IN ANY PLACE UNLESS THAT WEAPON IS EQUIPPED WITH A TAMPER RESISTANT SAFETY DEVICE OR IS STORED OR KEPT IN A SECURELY LOCKED CONTAINER.*



#### NEW YORK STATE WARNING

*IT IS UNLAWFUL TO CARRY ANY MAGAZINE OR BELT WHICH HOLDS MORE THAN SEVEN ROUNDS, UNLESS AUTHORITY IS GRANTED BY THE STATE OF NEW YORK. THE USE OF A LOCKING DEVICE OR SAFETY LOCK IS ONLY ONE ASPECT OF RESPONSIBLE FIREARMS STORAGE FOR INCREASED SAFETY, FIREARMS SHOULD BE STORED UNLOADED AND LOCKED IN A LOCATION THAT IS BOTH SEPARATED FROM THEIR AMMUNITION AND INACCESSIBLE TO CHILDREN AND OTHER UNAUTHORIZED PERSONS.*

## 02 | SAFETY PRECAUTIONS

Safety must be the first and constant consideration of every person who handles firearms and ammunition. The person with a firearm in his possession has an important responsibility. He/she must know how to use his/her firearm safely:

1. Always keep the muzzle pointed in a safe direction. Watch the muzzle at all time: never point a gun, accidentally or intentionally, at any person or anything you do not intend to shoot. Identify the target before shooting; do not shoot at sounds.
2. Always treat a gun as if it is loaded – it may be!
3. Keep your finger off the trigger while operating the action and at all other times until you are ready to shoot.
4. Keep the safety “on” or in the “safe” position at all times until you are ready to fire. Do not rely on your gun’s safety, the safety on any gun is a mechanical device and is not intended as a substitute for common sense or safe gun handling.
5. Learn how your gun functions and handles. If you do not thoroughly understand the proper use and care of your gun, seek the advice of someone who is knowledgeable.
6. Do not alter or modify any part of the firearm.
7. Store guns unloaded, separate from any ammunition, and out of the reach of children.
8. Be sure the barrels is clear of any obstructions before loading. Make it a habit to check the barrel every time before loading.
9. Be sure you have and use the proper ammunition.
10. Wear protective shooting glasses and adequate ear protection while shooting.

11. Never climb or jump over anything, such as a tree, fence, or ditch, with a loaded gun. Open the barrel, remove the shells and hand the gun to someone else or place it on the ground on the other side of the obstacle before crossing it yourself. Do not lean a gun against a tree or other object; it could fall and possibly discharge.
12. Do not shoot at a hard surface or at water. Bullet and shot can ricochet or bounce off and travel in unpredictable directions with great velocity.
13. Never transport a loaded gun. DO not place a loaded gun into a vehicle. The gun should be unloaded and placed into a case when not in use.
14. Never drink alcoholic beverages before or during shooting.

### **WARNING:**

DO NOT ATTEMPT TO USE ANY FIREARM WITHOUT HAVING A COMPLETE UNDERSTANDING OF ITS PARTICULAR CHARACTERISTICS AND SAFE USE. READ AND UNDERSTAND THIS MANUAL CAREFULLY BEFORE USAGE OF YOURSHOTGUN.

### **WARNING:**

YOU SHOULD NEVER DEPEND ON A SAFETY MECHANISM OR ANY OTHER MECHANICAL DEVICE TO JUSTIFY CARELESS AND IMPROPER HANDLING.

### **WARNING:**

THIS FIREARM WAS MANUFACTURED TO PERFORM PROPERLY WITH THE ORIGINAL PARTS AS DESIGNED. PLEASE MAKE SURE ANY PARTS YOU BUY ARE INSTALLED CORRECTLY AND THAT NEITHER REPLACEMENTS NOR ORIGINALS ARE ALTERED OR CHANGED. PUTTING A FIREARM TOGETHER INCORRECTLY OR WITH MODIFIED PARTS CAN RESULT IN DAMAGED FIREARM, DANGER, AND INJURY OR DEATH. ANY MODS TO FIREARM WILL VOID FACTORY WARRANTY.

## 03 | SAFETY PRECAUTIONS

### **WARNING:**

CHILDREN ARE ATTRACTED TO FIREARMS, AND MIGHT BE ABLE TO OPERATE THEM. THEY CAN CAUSE SEVERE INJURIES AND EVEN DEATH, TO THEMSELVES OR OTHERS. PREVENT CHILDREN FROM ACCESS, ALWAYS KEEP YOUR FIREARMS LOCKED AWAY, UNLOADED AND OUT OF REACH OF CHILDREN WHEN NOT IN USE AT ANY TIME.

### **WARNING:**

THE FIREARM SHOULD BE STORED IN ROOMS WITH A DRY ATMOSPHERE AND MINIMUM HUMIDITY. IT SHOULD NOT BE STORED ENCASED IN LEATHER OR ANYTHING THAT WILL ATTRACT AND HOLD MOISTURE, CAUSING IT TO RUST.

### **WARNING:**

DO ALL PROCEDURES (DISASSEMBLY, CLEANING AND OTHER MAINTENANCE) ONLY WHEN THE FIREARM IS UNLOADED. BE SURE THAT THE MAGAZINE TUBE, RECEIVER AND CHAMBER ARE EMPTY WHILE YOU ARE PROCEEDING. CHECK EJECTION PORT, LOADING PORT AND CHAMBER VISUALLY.

### **WARNING:**

ALL PRODUCTS HAVE 3" (76MM) CHAMBERS (EXCEPT OTHERWISE STATED). YOU CAN SEE MARKS ABOUT GAUGES AND CHAMBER LENGTH ON THE GUN. EVERY SHOTGUN HAS PASSED DURABILITY TEST WITH SPECIAL HIGH PRESSURE CARTRIDGES.

### **WARNING:**

WHEN STORING THE GUN FOR A PROLONGED PERIOD OF TIME, IT IS NECESSARY TO OIL IT HEAVILY WITH AN ACID-FREE LUBRICANT. THE EXTERNAL PARTS MUST BE COATED WITH AN ANTI-RUST OIL OR GREASE TO PREVENT MOISTURE CAUSING THE PARTS TO RUST AND MALFUNCTION. BEFORE USAGE, THE SHOTGUN MUST BE CLEANED AND WIPED DRY AGAIN.

## 04 | TECH SPECS

Model	VRBP-100
Caliber	12 Gauge
Chamber	2.75in / 3in
Action	Semi Automatic
Capacity	5+1 Rounds
Choke	Full, Modified, and Improved Cylinder
Barrel	Contoured
Barrel Length	500mm / 20in
Overall Length	785mm / 30.91in
Overall Width	230mm / 9.1in
Overall Height	30mm / 1.18in
Rear Sight	Serration on receiver
Weight, Empty	3.50kg / 7.72lbs
Weight, Loaded	4.10kg / 9.04lbs
Finish	Black Chrome
Stock	Polymer buttstock with rubber buttpad and polymer forend

CALIBER



12 Gauge

# 05 | BASIC PARTS

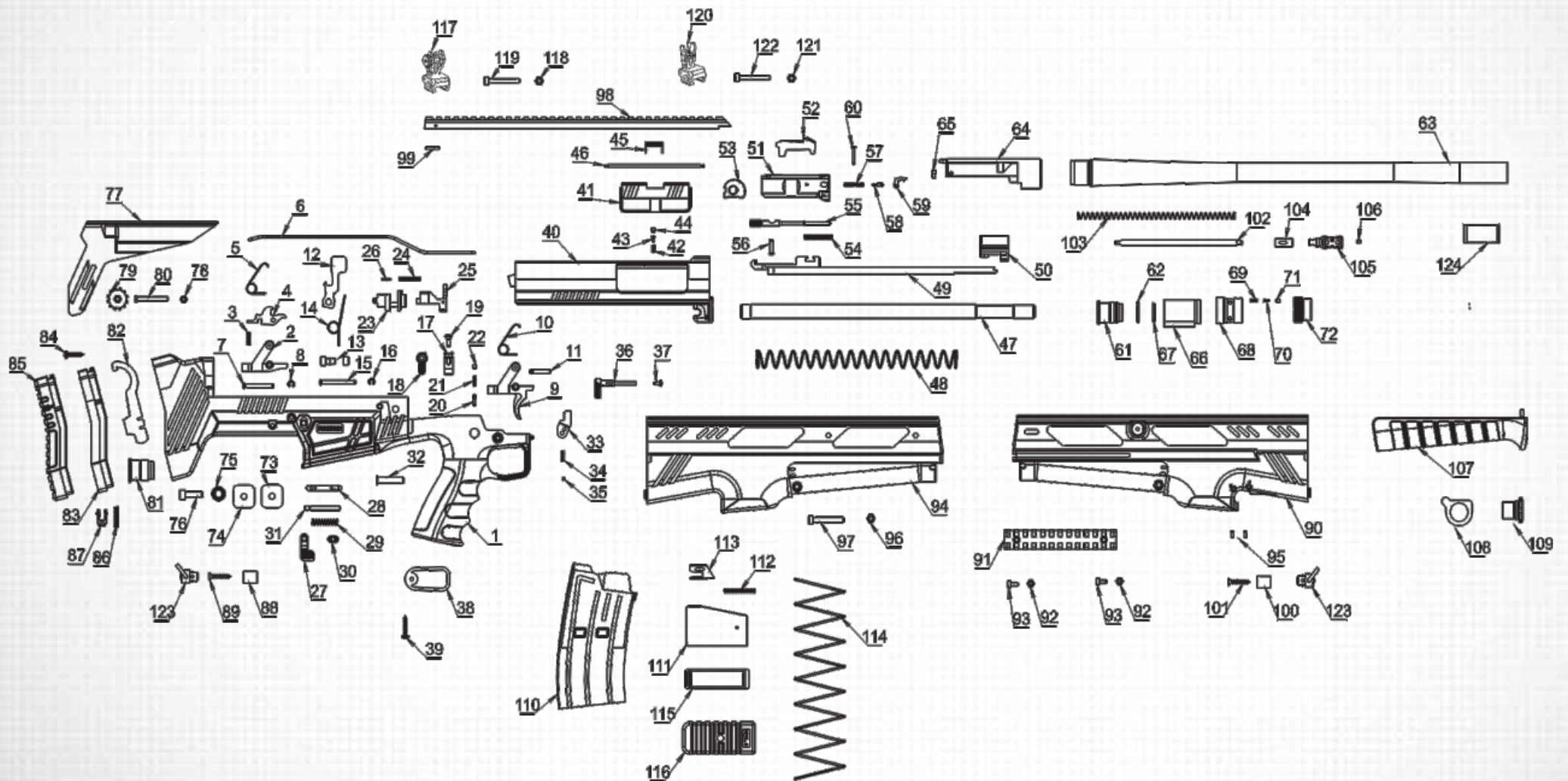
## VRBP-100 MAG FED SHOTGUN BASIC PARTS

PART NUMBER	PART NAME	PART NUMBER	PART NAME	PART NUMBER	PART NAME	PART NUMBER	PART NAME
1	Receiver	32	Upper Connector Pin	63	Barrel	94	Right Foreend Side
2	Back Trigger	33	Cartridge Ramp	64	Barrel Extension	95	Coloured Safety Pin
3	Disconnecter Spring	34	Ficartridge Ramp Spring	65	Extractor Rivet	96	M5 Hand Guard Connector Nut
4	Disconnecter	35	Cartridge Ramp Ball	66	Gas Block	97	M5 Hand Guard Connector Screw M5
5	Trigger Spring	36	Cartridge Ramp	67	Gas Block O-ring	98	TopRail
6	Trigger Slide	37	Cartridge Ramp Screw	68	Gas Block Discharge Shell	99	TopRail Pin
7	Rear Trigger Pin	38	Pistol Grip Cover	69	Gas Block Discharge Shell Spring	100	Sling Swivel Docking
8	Crescent Fragment	39	Pistol Grip Screw	70	Gas Block Discharge Shell Spring Pin	101	Sling Swivel Docking Screw
9	Front Trigger	40	Upper	71	Gas Block Discharge Shell Spring Spring	102	Charging Handle Pusher Pin
10	Front Trigger Spring	41	Ejector Cover	72	Magazine Tube Cover	103	Charging Handle Spring
11	Front Trigger Pin	42	Ejector Cover Spring	73	Frame Connector Rubber	104	Charging Handle Docking
12	Hammer	43	Ejector Cover Pin	74	Frame Connector Washer	105	Charging Handle
13	Hammer Shell Group	44	Ejector Cover Srew	75	Washer	106	M4 Screw
14	Hammer Spring	45	Ejector Cover Spring	76	M6 Screw	107	Grip
15	Hammer Pin	46	Cover Pin	77	Cheekpad	108	Fore End Retainer
16	Cresent Fragment	47	Magazine Tube	78	Cheekpad Nut	109	Nut
17	Body Safety	48	Main Spring	79	Cheekpad Adjuster	110	(2+1, 5+1, 10+1 ) Magazine
18	Cover Safety	49	Carrier	80	Cheekpad Adjuster Screw	111	Follower
19	Safety Screw	50	Welded Slide	81	Heavy Load Gas Piston	112	Follower Rivet Spring
20	Safety Ball	51	Bolt	82	Mulit Use Tool	113	Follower Rivet
21	Safety Spring	52	Lock	83	Spacer	114	Magazine Spring
22	M4 Screw	53	Buffer Bolt	84	Spacer Screw	115	Magazine Base Plate Retainer
23	Bolt Stopper	54	Firing Pin Spring	85	Recoil Pad	116	Magazine Base Plate
24	Bolt Stopper Spring	55	Firing Pin	86	Recoil Pad Button Spring	117	Flip Up Rear Sight
25	Bolt Stopper Latch	56	Firing Pin Fragment	87	Recoil Pad Button	118	Flip Up Rear Sight Retaining Nut
26	Bolt Stopper Latch Pin	57	Extractor Spring	88	Sling Swivel Docking	119	Flip Up Rear Sight Retaining Screw
27	Magazine Lock Latch	58	Extractor Spring Pin	89	Sling Swivel Docking Screw	120	Flip Up Front Sight
28	Magazine Lock	59	Extractor	90	Left Foreend Side	121	Flip Up Front Sight Retaining Nut
29	Magazine Lock Spring	60	Extractor Pin	91	Side Rail	122	Flip Up Front Sight Retaining Screw
30	Magazine Lock Button	61	Light Load Gas Piston	92	M4 Nut	123	Push-in Sling Swivel
31	Magazine Lock Screw	62	Gas Piston Fragment	93	M4 Screw	124	Mobile Choke



# 06 | EXPLODED VIEWS

## VRBP-100 MAG FED SHOTGUN



# 07 | OPERATING INSTRUCTIONS

## DISSEMBLY OF THE FIREARM



1. Remove the magazine by pushing the release button.



2. The release button is on both sides of the firearm.



3. Use the tool to remove the cover in the front.



4. Push in arrow direction to remove the forend.



5. Hold the charging handle tight and remove the cover in the front with a tool.



6. Slide the assembly towards arrow direction.

## 08 | OPERATING INSTRUCTIONS



7. Remove the barrel cap by unscrewing it.



8. Hold the pistol grip and push the barrel in arrow direction.



9. At this stage you can clean or replace the gas piston.



10. Remove the recoil pad with tool. At this stage you can add or remove additional spacers.



11. Unscrew both screws with an allen wrench.



12. Remove the the covers located on both sides with an allen wrench.

## 09 | MAINTENANCE



**13.** Remove the the covers located on both sides carefully.



**14.** The pins are used to seperate the upper from the trigger housing.



**15.** Push the pins in the front and the back, and pull them from the other side until they unlock.



**16.** Slightly push the bolt assembly backwards until it unlocks. Then seperate the trigger housing from the upper by pulling in arrow direction.

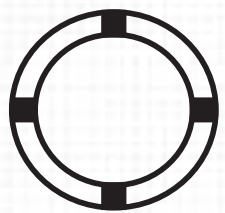
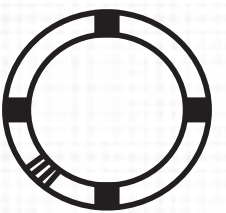
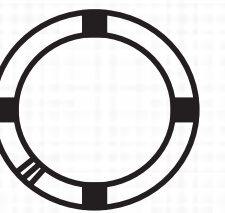
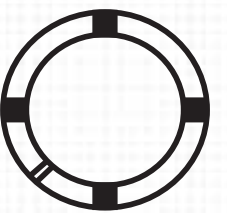
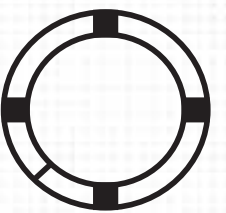


**17.** Pull the bolt assembly in arrow direction and remove it carefully.

# 10 | MAINTENANCE




## USAGE OF CHOKE TUBES

The choke is what controls the openness or tightness of the pattern of your shotgun. The chart below lists the choke available (from open to tight), and the corresponding marks that indicate the choke of your specific shotgun.

	SKEET	IC	M	IM	F
CHOKETUBE					
BBLS	CL	****	***	**	*

Never fire or gun cleaning tools through a barrel that uses choke tubes without having tube installed. The threads of the choke tube and the internal threads of the barrel should be cleaned after each use and before installation of the tube.

To install a tube, insert the tube into the barrel and tighten with your fingers. Once the tube is finger-tightened, tighten with the appropriate choke-tube wrench until the tube is snug. DO NOT over tighten or forcefully tighten with wrench.

Marking	USAGE OF CHOKE TUBES	NOTCHES
*	Suitable for longer ranges (DONT USE SLUGS!)	
***	Suitable for medium ranges (DONT USE SLUGS!)	
*****	Suitable for short ranges	

## ORDERING PARTS

Visit RIA website to browse, learn more about and purchase parts and ammunition for all of your Rock Island Armory products.

 [www.advancedtactical.com](http://www.advancedtactical.com)



## WARRANTY REGISTRATION

Armscor's warranty covers its firearms and parts. We offer limited lifetime warranty on our products for their intended purpose. As with any product, abuse, gunsmithing by an unqualified person and normal wear and tear are excluded. Additionally, if the firearm was modified and/or repaired by an unqualified gunsmith without permission from Armscor, then the warranty will be void. If warranty work should be required, return the firearm to the address listed below. There is no refund for the shipping cost. Gunsmithing services are available by registered Armscor Gunsmithers. Please email the address below.

To register your firearm, please go to [www.rockislandarmory.com/support-center/warranty/](http://www.rockislandarmory.com/support-center/warranty/) and complete online warranty form. In comments section, write warranty registration and press submit. You can also go to [www.rockislandarmory.com](http://www.rockislandarmory.com) and press warranty section at the bottom.

For more information on warranty, visit [www.rockislandarmory.com](http://www.rockislandarmory.com), or email [support@armscor.com](mailto:support@armscor.com)

Armscor Precision International  
150 North Smart Way  
Pahrump, NV 89060  
Email: [support@armscor.com](mailto:support@armscor.com)

## IMPORTANT WARRANTY INFORMATION

Our Rock Island Armory shotguns are warranted to function only with Factory Ammo and the Original Factory Magazine. Use of Handloads is not covered in Warranty of Repair for the function of the Firearm.

DUE TO THE FIT AND TIGHTNESS OF FIREARM, RIA RECOMMENDS A BREAK-IN PERIOD OF 500 ROUNDS.

### THIS IS HOW YOU VOID YOUR WARRANTY

- \* Refinishing your RIA firearm
- \* Misuse, Mishandling, Dropping your RIA Firearm
- \* Firing Remanufactured or Reloaded Ammunition
- \* Not properly reassembling your RIA Firearm resulting in damage, ie reverse plugs!
- \* Any addition of after market parts
- \* Unauthorized repairs done by any other than Rock Island Armory

### LIMITS ON WARRANTY (will not cover)

- \* Finish, Holster wear, Scratches, Chemical damage
- \* After Market Magazines
- \* Damage to Factory Magazines
- \* Sights not installed by Rock Island Armory
- \* Recoil Springs

WE RESERVE THE RIGHT TO CHARGE FOR LABOR, PARTS AND SHIPPING TO RETURN YOUR RIA FIREARM BACK TO FACTORY SPECIFICATIONS IF IT HAS BEEN ALTERED.

# RIA

IMPORTS

[WWW.ROCKISLANDARMORY.COM](http://WWW.ROCKISLANDARMORY.COM)

