

VR60 SHOTGUN

USER'S MANUAL



WARNING: READ THE INSTRUCTIONS AND SAFETY PRECAUTIONS IN THIS MANUAL CAREFULLY BEFORE USING THE FIREARM.



ROCK ISLAND ARMORY

USER'S MANUAL VR60 SHOTGUN

SAFETY, INSTRUCTION AND PARTS MANUAL



As a responsible owner of this firearm, you must read the instructions and warnings in this manual carefully. Before using this firearm, make sure you understand thoroughly the contents of this manual.

This manual must always be in the firearm's carrying case whenever the owner/user brings it or when it transfers ownership. A copy of this manual is available upon request from:

*ARMSCOR PRECISION INTERNATIONAL
150 N Smart Way, Pahrump NV 89060
E-mail: support@armscor.com*

TABLE OF CONTENTS

- 1 Statement of Liability
- 1 State-By-State Warnings
- 2 Safety Precautions

HEALTH & SAFETY

- 3 Tech Specs
- 4 Basic Parts
- 5 Exploded Views

ABOUT THE FIREARM

- Operating Instructions 6
 - Shotgun Disassembly Instructions.....6
 - Choke Set.....7
 - Screw-in Choke Warning.....7

- Maintenance and Cleaning 8

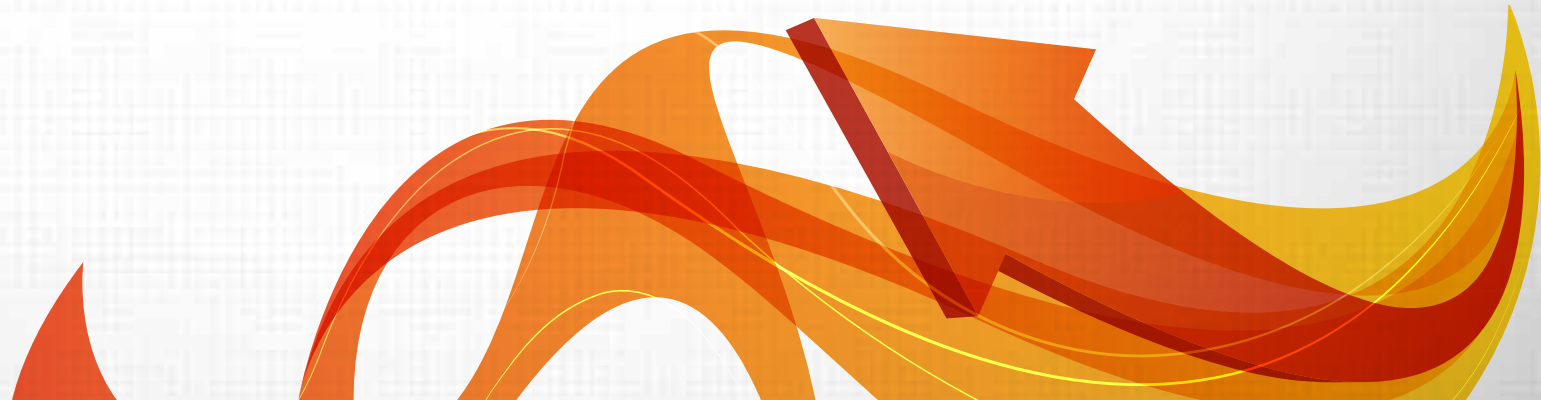
- Storage and Transportation 9

- Ordering Parts 10

- Warranty 11

- Notes 12

MAINTENANCE



STATEMENT OF LIABILITY

This shotgun is classified as a firearm or dangerous weapon. It is expressly understood that we assume no liability for its resale or unsafe handling under local laws and regulations. Armscor assumes no responsibility for physical injury or property damage resulting from either intentional or accidental discharge, or for the function of the firearm subjected to influence beyond their control. Armscor will honor no claims which may result from careless handling, unauthorized adjustments, defective or improper ammunition, corrosion or neglect. Examine your firearm carefully at the time of purchase. It should be forwarded immediately to the factory or its sales agent if any adjustment of any kind of required.

State-By-State Warnings



CALIFORNIA STATE WARNING

CHILDREN ARE ATTRACTED TO AND CAN OPERATE FIREARMS THAT CAN CAUSE SEVERE INJURIES OR DEATH. PREVENT CHILD ACCESS BY ALWAYS KEEPING FIREARMS LOCKED AWAY AND UNLOADED WHEN NOT IN USE. IF YOU KEEP A LOADED FIREARM WHERE A CHILD OBTAINS AND IMPROPERLY USES IT, YOU MAY BE FINED OR SENT TO PRISON. IT IS UNLAWFUL TO USE A MAGAZINE WITH A CAPACITY OVER 10 ROUNDS.



MASSACHUSETTS STATE WARNING

IT IS UNLAWFUL TO CARRY ANY MAGAZINE OR BELT WHICH HOLDS MORE THAN TEN ROUNDS, UNLESS AUTHORITY IS GRANTED BY THE BOSTON POLICE COMMISSIONER. IT IS UNLAWFUL TO STORE OR KEEP A FIREARM, RIFLE, SHOTGUN OR MACHINE GUN IN ANY PLACE UNLESS THAT WEAPON IS EQUIPPED WITH A TAMPER RESISTANT SAFETY DEVICE OR IS STORED OR KEPT IN A SECURELY LOCKED CONTAINER.



NEW YORK STATE WARNING

IT IS UNLAWFUL TO CARRY ANY MAGAZINE OR BELT WHICH HOLDS MORE THAN SEVEN ROUNDS, UNLESS AUTHORITY IS GRANTED BY THE STATE OF NEW YORK. THE USE OF A LOCKING DEVICE OR SAFETY LOCK IS ONLY ONE ASPECT OF RESPONSIBLE FIREARMS STORAGE FOR INCREASED SAFETY, FIREARMS SHOULD BE STORED UNLOADED AND LOCKED IN A LOCATION THAT IS BOTH SEPARATED FROM THEIR AMMUNITION AND INACCESSIBLE TO CHILDREN AND OTHER UNAUTHORIZED PERSONS.

02 | SAFETY PRECAUTIONS

Safety must be the first and constant consideration of every person who handles firearms and ammunition. The person with a firearm in his possession has an important responsibility. He/she must know how to use his/her firearm safely:

1. Always keep the muzzle pointed at a safe direction. Watch the muzzle at all time: never point a gun, accidentally or intentionally, at any person or anything you do not intend to shoot. Identify the target before shooting; do not shoot at sounds.
2. Always treat a gun as if it is loaded – it may be!
3. Keep your finger off the trigger while operating the action and at all other times until you are ready to shoot.
4. Keep the safety “on” or in the “safe” position at all times until you are ready to fire. Do not rely on your gun’s safety, the safety on any gun is a mechanical device and is not intended as a substitute for common sense or safe gun handling.
5. Learn how your gun functions and handles. If you do not thoroughly understand the proper use and care of your gun, seek the advice of someone who is knowledgeable.
6. Do not alter or modify any part of the firearm.
7. Store guns unloaded, separate from any ammunition, and out of the reach of children.
8. Be sure the barrels is clear of any obstructions before loading. Make it a habit to check the barrel every time before loading.
9. Be sure you have and use the proper ammunition. A 20 gauge shell will enter a 12 gauge chamber far enough so that a 12 gauge shell can be loaded behind it. Also, a 3 inch shell may fit into a 2 $\frac{3}{4}$ inch chamber, but the crimp at the mouth of the shell will unfold into the forcing cone. If either of these things occur and you fire the gun, the gun will explode, damaging the gun and possibly causing serious injury or death to you and those around you.
10. Wear protective shooting glasses and adequate ear protection when shooting.
11. Never climb or jump over anything, such as a tree, fence, or ditch, with a loaded gun. Open the barrel, remove the shells and hand the gun to someone else or place it on the ground on the other side of the obstacle before crossing it yourself. Do not lean a gun against a tree or other object; it could fall and possibly discharge.
12. Do not shoot at a hard surface or at water. Bullet shot can ricochet or bounce off and travel in unpredictable directions with great velocity.
13. Never transport a loaded gun. Do not place a loaded gun into a vehicle. The gun should be unloaded and placed into a case when not in use.
14. Never drink alcoholic beverages before or during shooting.

WARNING:

DO NOT ATTEMPT TO USE ANY FIREARM WITHOUT HAVING A COMPLETE UNDERSTANDING OF ITS PARTICULAR CHARACTERISTICS AND SAFE USE.

WARNING:

YOU SHOULD NEVER DEPEND ON A SAFETY MECHANISM OR ANY OTHER MECHANICAL DEVICE TO JUSTIFY CARELESS AND IMPROPER HANDLING.

WARNING:

THIS FIREARM WAS MANUFACTURED TO PERFORM PROPERLY WITH THE ORIGINAL PARTS AS DESIGNED. PLEASE MAKE SURE ANY PARTS YOU BUY ARE INSTALLED CORRECTLY AND THAT NEITHER REPLACEMENTS NOR ORIGINALS ARE ALTERED OR CHANGED. PUTTING A FIREARM TOGETHER INCORRECTLY OR WITH MODIFIED PARTS CAN RESULT IN DAMAGED FIREARM, DANGER, AND INJURY OR DEATH. ANY MODIFICATIONS TO FIREARM WILL VOID FACTORY WARRANTY.

03 | TECH SPECS

Model	VR60
Caliber	12 Gauge
Chamber	2.75in / 3in
Action	Semi-automatic
Capacity	5 + 1 Rounds
Choke	Mobile, Full, Modified, and Improved Cylinder
Barrel	Contoured
Barrel Length	500mm / 20in
Overall Length	990mm / 39in
Overall Width	40mm / 1.6in
Overall Height	230mm / 9in
Front Sight	Bead
Rear Sight	Serration on receiver
Weight, Empty	3.35kg / 7.38lbs
Weight, Loaded	3.85kg / 8.49lbs
Finish	Black, Grey, Red, Brown chrome
Stock	Polymer buttstock with rubber buttpad and polymer forend



04 | BASIC PARTS

VR60 SHOTGUN BASIC PARTS

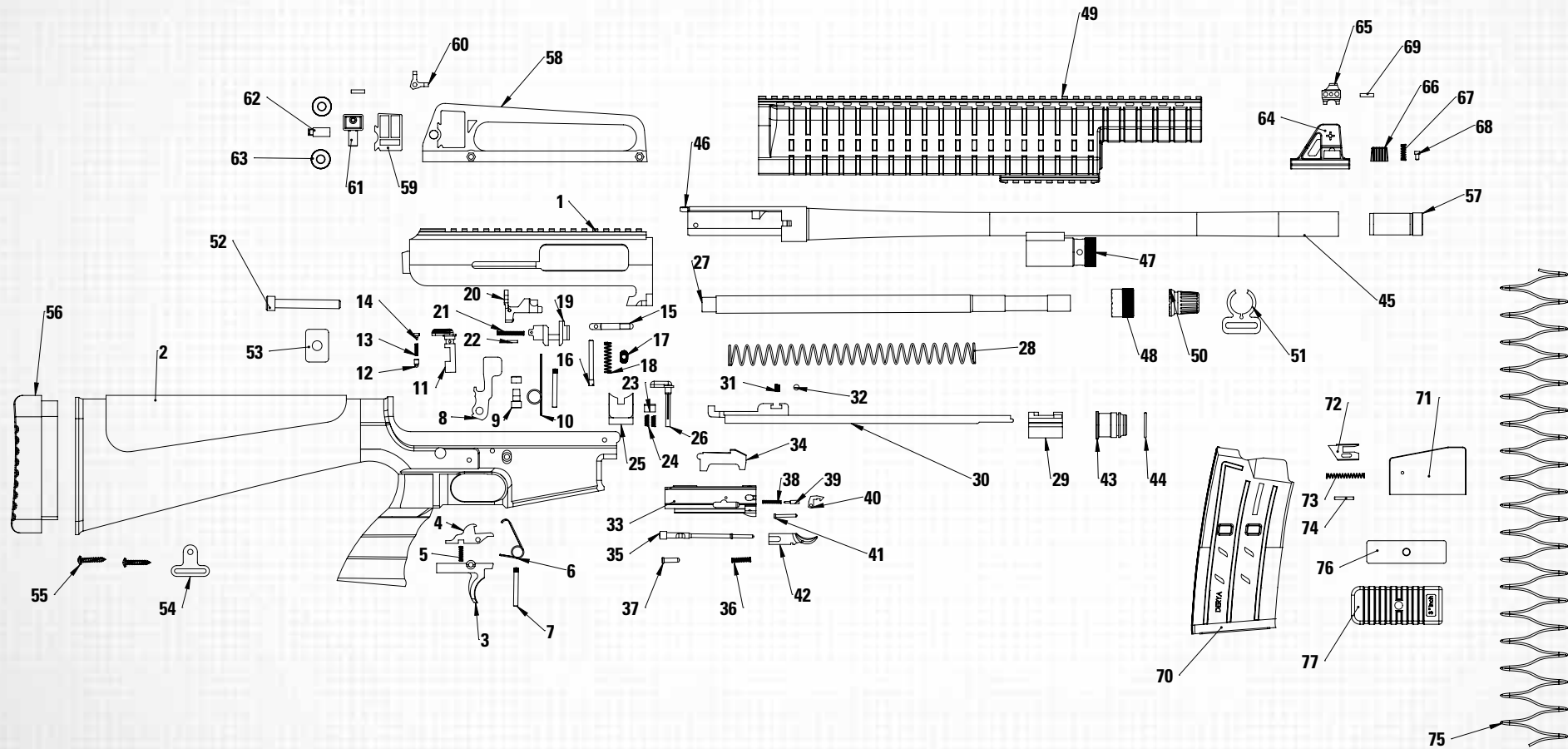
PART NAME	PART NUMBER
Upper Case	1
Lower Case And butt	2
Trigger	3
Blind Trigger	4
Blind Trigger Spring	5
Trigger Spring	6
Trigger Cock Spring	7
Cock	8
Cock Centering Sleeve	9
Spring Cock	10
Safety	11
Safety Casing	12
Safety Spring	13
Safety Screws	14
Magazine Lock	15
Magazine Lock Screw	16
Magazine Lock button	17
Magazine Lock Spring	18
Mechanism Retainer Slot	19
Mechanism Retainer Latch	20
Mechanism Retainer Spring	21
Mechanism Retainer Pin	22
Click Flare Launchers	23
Snap Bow Flare Launchers	24
Flare Launchers	25

PART NAME	PART NUMBER
Flare Ramp Pin	26
Executive Pipe	27
Enforcement of Spring	28
Arm Tube	29
Arm	30
Ball Spring	31
Ball	32
Mechanism	33
Lock	34
Needle	35
Needle Spring	36
Needle Pin	37
Pawl	38
Nail Bow Pin	39
Nail	40
Nail Pin	41
Knob	42
Plunger	43
Piston Segment	44
Barrel	45
Cap	46
Gas Chamber	47
Lock Nut / Check-nut	48
Self-propelled Gun	49
Square Nut	50
Closed Belting	51

PART NAME	PART NUMBER
Butt Connecting Screw M8	52
Butt Fixing Washer	53
Stock Belting	54
Stock Rubber Screw	55
Stock Rubber	56
Shock	57
Handle	58
Handle Hindsight	59
Handle Hindsight Sight	60
Handle Hindsight Adjustment Screw	61
Left/Right Adjustment Screw	62
Setting Nut	63
Front Sight	64
Front Sight Air Pac	65
Front Sight Lock	66
Front Sight Lock Spring	67
Front Sight Lock Bow Pin	68
Front Sight Fixing Pin	69
Clip	70
Pistol Tub	71
Magazine Tub Nail	72
Magazine Tub Nail Spring	73
Magazine Tub Nail Pin	74
Magazine Spring	75
Magazine Cover Center Part	76
Magazine Cover	77

05 | EXPLODED VIEWS

VR60 SHOTGUN



06 | OPERATING INSTRUCTIONS

SHOTGUN DISASSEMBLY INSTRUCTIONS

MANUFACTURING WARNING:

THIS MANUFACTURED FIREARM WAS DESIGNED TO PERFORM WITH ITS ORIGINAL PARTS. IT IS YOUR RESPONSIBILITY TO MAKE SURE THAT ANY PARTS YOU BUY ARE AUTHENTIC AND CORRECTLY INSTALLED AND THAT THE PARTS HAVE NOT BEEN ALTERED OR CHANGED. IT IS IMPERATIVE THAT ONLY FACTORY PARTS BE USED AS REPLACEMENTS TO ASSURE THAT THE FIREARM REMAINS FUNCTIONALLY SAFE AND OPERATES ACCURATELY. THE GUN OWNER ACCEPTS FULL RESPONSIBILITY FOR THE CORRECT REASSEMBLY AND FUNCTIONING OF THE FIREARM AFTER ANY DISASSEMBLY OR REPLACEMENT OF PARTS.

IMPORTANT WARNING:

BEFORE YOU BEGIN ANY DISASSEMBLY ALWAYS

- 1) POINT THE SHOTGUN IN A SAFE DIRECTION.*
- 2) BE SURE THAT YOU REMOVE THE MAGAZINE FROM THE FIREARM.*
- 3) VISUALLY AND MANUALLY INSPECT THE CHAMBER TO CONFIRM THAT IT IS EMPTY.*



1. Unscrew the front handguard secure cap and remove it.



2. Pull the handguard forward to remove it from the body.



3. Remove the barrel fixing nut but you don't need to remove regulator nut and spring



4. Pull the bolt to the rear slightly and remove the barrel as you are letting the bolt slide forwards. Slowly release the bolt to clear the recoil spring/bolt carrier as the barrel comes out.



5. Turn the ratchet downward to release the carrier.

07 | OPERATING INSTRUCTIONS



6. Remove the buttstock cap using a screwdriver to access the upper receiver retention bolt in the bore of the buttstock.



7. Insert Allen socket into upper receiver retention bolt and loosen the bolt 4 full turns. Remove the ratchet and lightly tap the extension and socket to push the retention bolt forward. After the upper receiver starts to separate, loosen the bolt 2 to 3 more turns. Gently tap the extension to further separate the upper receiver from the buttstock. You will note an expanding gap as you do this. When the widening of the gap is around an inch, you can remove the upper receiver retention bolt and washer. Slightly compress and hold the recoil spring on the operational rod with one hand; this keeps the bolt from pushing forward and damaging the feed ramp. Use your other hand to help separate the upper receiver from the buttstock/lower receiver. As the upper receiver separates, lift the receiver up and off. This allows the bolt to clear the feed ramp on the lower receiver.

CHOKE SET

Shotgun comes with 3 screw-in internal chokes (Full, Modified and cylinder bore). Each choke can be identified by the number of notches on it (Full-1 Notch, Modified-3 Notches, and Cylinder Bore-5 Notches). A choke wrench is supplied in the box with the chokes. Before you attempt to install a choke always perform a safety check to make sure that the shotgun is unloaded and pointed in a safe direction. To install the choke you can insert it into the end of the barrel and hand screw it. It can then be tightened with the choke wrench to secure it in place.

SCREW-IN CHOKE WARNING

Never peer directly into the shotgun's muzzle or change chokes when the gun is loaded regardless of the position of the safety. Never fire the shotgun if the screw-in choke is not fully and tightly bottomed to the barrel threads, improperly installed or "cross-threaded", or if the threads of the barrel or choke insert is damaged. In this situation the barrel will be damaged and the choke insert will be propelled out of the muzzle with high velocity which can result in death. Serious injury, or property damage. Never fire the shotgun without the screw-in choke in place as it will cause an unpredictable shot pattern and damage the choke threads in the barrel thus making correct installation of the screw-in choke impossible without expensive re-barreling.

MAINTENANCE AND CLEANING

IMPORTANT WARNING:

BEFORE YOU START CLEANING YOUR SHOTGUN ALWAYS MAKE SURE IT IS UNLOADED AND POINTED IN A SAFE DIRECTION.

LUBRICATION WARNING:

FIRING A SHOTGUN WITH OIL, GREASE, OR OTHER DEBRIS PARTIALLY OBSTRUCTING THE BORE MAY RESULT IN DAMAGE TO THE FIREARM OR INJURY TO THE SHOOTER AND THOSE NEARBY BEFORE FIRING MAKE SURE THE BORE AND CHAMBER OF THE BARREL IS UNOBSTRUCTED AND DRY NEVER SPRAY OR APPLY LUBRICANT ON SHOTSHELLS. FIRING ANOTHER SHOTSHELL BEHIND AN OBSTRUCTION MAY DAMAGE THE SHOTGUN AND CAUSE DEATH OR INJURY. ONLY USE LUBRICANTS PROPERLY AND SPARINGLY. YOU ARE RESPONSIBLE FOR THE PROPER CARE AND MAINTENANCE OF YOUR SHOTGUN.

STEP 1. Disassemble your shotgun.

STEP 2. Using a proper cleaning rod, run a solvent-wetted patch through the bore several times. This will then be followed by running dry patches through the bore to remove any debris or residue.

STEP 3. If the bore is leaded to the extent that the above patch cleaning procedure did not remove the lead, then scrub the bore full length with a solvent-wetted brass bristle brush. When the leading is loose then repeat step #2.

STEP 4. The surfaces of bolt carrier, ejector and inside surfaces of the receiver should be coated very lightly with non-penetrating lubricating oil.

STEP 5. Reassemble the shotgun and wipe the exterior metal surfaces sparingly with an oiled cloth. Swab the bore with any oily patch before storing the firearm.

STEP 6. Place the shotgun in a safe, locked storage space where unauthorized persons cannot access the firearm. Never store the shotgun in a leather case as leather attracts.



SCAN QR

SEE FULL VIDEO TUTORIALS ON OUR
WEBSITE

STORAGE AND TRANSPORTATION

When storing the firearm and ammunition, store in separate locations, store ammo in a cool, dry location.

When storing the gun for a prolonged period of time, It is necessary to oil it heavily with an acid-free lubricant. The external parts must be coated with an anti-rust oil or grease to prevent moisture causing the parts to rust and malfunction. Before usage, the shotgun must be cleaned and wiped dry again as discussed preciously.

WARNING:

CHILDREN ARE ATTRACTED TO AND CAN OPERATE FIREARMS THAT CAN CAUSE SEVERE INJURIES OR DEATH. PREVENT CHILD ACCESS BY ALWAYS KEEPING FIREARMS LOCKED AWAY AND UNLOADED WHEN NOT IN USE. IF YOU KEEP A LOADED FIREARM WHERE A CHILD OBTAINS AND IMPROPERLY USES IT, YOU MAY BE FINED OR SENT TO PRISON.

WARNING:

THE FIREARM SHOULD BE RE-STORED IN ROOMS WITH A DRY ATMOSPHERE AND WITH THE LEAST HUMIDITY. IT SHOULD NOT BE STORED ENCASED IN LEATHER OR ANYTHING THAT WILL ATTRACT AND HOLD MOISTURE, CAUSING IT TO RUST.

ORDERING PARTS

Visit RIA website to browse, learn more about and purchase parts and ammunition for all of your Rock Island Armory products.

 www.advancedtactical.com



WARRANTY REGISTRATION

Armcor's warranty covers its firearms and parts. We offer limited lifetime warranty on our products for their intended purpose. As with any product, abuse, gunsmithing by an unqualified person and normal wear and tear are excluded. Additionally, if the firearm was modified and/or repaired by an unqualified gunsmith without permission from Armcor, then the warranty will be void. If warranty work should be required, return the firearm to the address listed below. There is no refund for the shipping cost. Gunsmithing services are available by registered Armcor Gunsmithers. Please email the address below.

To register your firearm, please go to www.rockislandarmory.com/support-center/warranty/ and complete online warranty form. In comments section, write warranty registration and press submit. You can also go to www.rockislandarmory.com and press warranty section at the bottom.

For more information on warranty, visit www.rockislandarmory.com, or email support@armcor.com

Armcor Precision International
150 North Smart Way
Pahrump, NV 89060
Email: support@armcor.com

IMPORTANT WARRANTY INFORMATION

Our Rock Island Armory shotguns are warranted to function only with Factory Ammo and the Original Factory Magazine. Use of Handloads is not covered in Warranty of Repair for the function of the Firearm.

DUE TO THE FIT AND TIGHTNESS OF FIREARM, RIA RECOMMENDS A BREAK-IN PERIOD OF 500 ROUNDS.

THIS IS HOW YOU VOID YOUR WARRANTY

- * Refinishing your RIA firearm
- * Misuse, Mishandling, Dropping your RIA Firearm
- * Firing Remanufactured or Reloaded Ammunition
- * Not properly reassembling your RIA Firearm resulting in damage, ie reverse plugs!
- * Any addition of after market parts
- * Unauthorized repairs done by any other than Rock Island Armory

LIMITS ON WARRANTY (will not cover)

- * Finish, Holster wear, Scratches, Chemical damage
- * After Market Magazines
- * Damage to Factory Magazines
- * Sights not installed by Rock Island Armory
- * Recoil Springs

WE RESERVE THE RIGHT TO CHARGE FOR LABOR, PARTS AND SHIPPING TO RETURN YOUR RIA FIREARM BACK TO FACTORY SPECIFICATIONS IF IT HAS BEEN ALTERED.

NOTES



WWW.ROCKISLANDARMORY.COM

