

M5 SHOTGUN

USER'S MANUAL



WARNING: READ THE INSTRUCTIONS AND SAFETY PRECAUTIONS
IN THIS MANUAL CAREFULLY BEFORE USING THE FIREARM.



ROCK ISLAND ARMORY

USER'S MANUAL M5 SHOTGUN

SAFETY, INSTRUCTION AND PARTS MANUAL



As a responsible owner of this firearm, you must read the instructions and warnings in this manual carefully. Before using this firearm, make sure you understand thoroughly the contents of this manual.

This manual must always be in the firearm's carrying case whenever the owner/user brings it or when it transfers ownership. A copy of this manual is available upon request from:

*ARMSCOR PRECISION INTERNATIONAL
150 N Smart Way, Pahrump NV 89060
E-mail: support@armscor.com*

TABLE OF CONTENTS

- 1 Statement of Liability
- 1 State-By-State Warnings
- 2 Safety Precautions

HEALTH & SAFETY

- 4 Tech Specs
- 5 Basic Parts
- 6 Exploded Views

ABOUT THE FIREARM

Operating Instructions 7

To Make Safe.....	7
To Release Safety.....	7
To Load Chamber.....	7
To Load Magazine Tube.....	7
To Operate.....	7
To Remove Loaded Shell From Magazine.....	7
Disassembly.....	8
Assembly.....	8
Action Safety Button.....	8

Care of Shotgun 9

Storage and Transportation 10

Ordering Parts 11

Warranty 12

Notes 13

MAINTENANCE

STATEMENT OF LIABILITY

This shotgun is classified as a firearm or dangerous weapon. It is expressly understood that we assume no liability for its resale or unsafe handling under local laws and regulations. Armscor assumes no responsibility for physical injury or property damage resulting from either intentional or accidental discharge, or for the function of the firearm subjected to influence beyond their control. Armscor will honor no claims which may result from careless handling, unauthorized adjustments, defective or improper ammunition, corrosion or neglect. Examine your firearm carefully at the time of purchase. It should be forwarded immediately to the factory or its sales agent if any adjustment of any kind of required.

State-By-State Warnings -



CALIFORNIA STATE WARNING

CHILDREN ARE ATTRACTED TO AND CAN OPERATE FIREARMS THAT CAN CAUSE SEVERE INJURIES OR DEATH. PREVENT CHILD ACCESS BY ALWAYS KEEPING FIREARMS LOCKED AWAY AND UNLOADED WHEN NOT IN USE. IF YOU KEEP A LOADED FIREARM WHERE A CHILD OBTAINS AND IMPROPERLY USES IT, YOU MAY BE FINED OR SENT TO PRISON. IT IS UNLAWFUL TO USE A MAGAZINE WITH A CAPACITY OVER 10 ROUNDS.



MASSACHUSETTS STATE WARNING

IT IS UNLAWFUL TO CARRY ANY MAGAZINE OR BELT WHICH HOLDS MORE THAN TEN ROUNDS, UNLESS AUTHORITY IS GRANTED BY THE BOSTON POLICE COMMISSIONER. IT IS UNLAWFUL TO STORE OR KEEP A FIREARM, RIFLE, SHOTGUN OR MACHINE GUN IN ANY PLACE UNLESS THAT WEAPON IS EQUIPPED WITH A TAMPER RESISTANT SAFETY DEVICE OR IS STORED OR KEPT IN A SECURELY LOCKED CONTAINER.



NEW YORK STATE WARNING

IT IS UNLAWFUL TO CARRY ANY MAGAZINE OR BELT WHICH HOLDS MORE THAN SEVEN ROUNDS, UNLESS AUTHORITY IS GRANTED BY THE STATE OF NEW YORK. THE USE OF A LOCKING DEVICE OR SAFETY LOCK IS ONLY ONE ASPECT OF RESPONSIBLE FIREARMS STORAGE FOR INCREASED SAFETY, FIREARMS SHOULD BE STORED UNLOADED AND LOCKED IN A LOCATION THAT IS BOTH SEPARATED FROM THEIR AMMUNITION AND INACCESSIBLE TO CHILDREN AND OTHER UNAUTHORIZED PERSONS.

02 | SAFETY PRECAUTIONS

Safety must be the first and constant consideration of every person who handles firearms and ammunition. The person with a firearm in his possession has an important responsibility. He/she must know how to use his/her firearm safely:

1. Before using your shotgun always ensure the inside of barrel is clean, free of dirt, grease and empty.
2. After using your shotgun disassemble barrel, choke and bolt group for cleaning and lubricating then re-assemble all.
3. Never use number 1 full choke for steel shot, number 4 and 5 chokes are mostly proper.
4. The values at choke table can vary to cartridge, choose suitable choke in accordance to your cartridge and game.
5. Ensure magazine cap is tight enough to have best performance from your shotgun.
6. Always ensure your shotgun's safety is on and muzzled is pointed in a safe direction while it is loaded/loading and unloading.
7. Use the right ammunition. Always use clean, dry, original, factory loaded ammunition of the proper type and gauge for your gun. If you are shooting a 12 gauge do not carry 20 gauge ammunition.

WARNING:

READ THIS INSTRUCTION MANUAL VERY CAREFULLY BEFORE HANDLING AND USING THIS SHOTGUN. FAILURE TO DO SO MAY RESULT IN SERIOUS INJURY OR DEATH TO YOU OR BYSTANDERS. DO NOT ATTEMPT TO LOAD OR USE THE SHOTGUN UNTIL YOU READ AND UNDERSTAND THE INFORMATION CONTAINED THIS OWNER'S MANUAL.

ALWAYS KEEP THIS MANUAL WITH YOUR SHOTGUN. MAKE SURE YOU UNDERSTAND ALL THE OPERATION INSTRUCTIONS, SAFETY PROCEDURES AND WARNINGS IN THIS MANUAL BEFORE YOU HANDLE THE SHOTGUN. IF YOU SELL, LEND OR GIVE THE SHOTGUN TO ANOTHER PERSON, MAKE SURE THIS MANUAL GOES WITH IT.

WARNING:

ALWAYS KEEP YOUR FINGER OUTSIDE THE TRIGGER GUARD AND ENSURE THAT THE SAFETY IS FULLY ENGAGED UNTIL YOU ARE SURE THAT YOU ARE READY TO FIRE. SAFETY IS "ON" WHEN THE SAFETY BUTTON IS PUSHED ALL THE WAY TO THE RIGHT AND RED RING IS NOT VISIBLE ON THE LEFT SIDE OF THE TRIGGER GUARD. WHEN RED IS VISIBLE, THE SAFETY IS "OFF" AND THE SHOTGUN IS READY TO FIRE.

WARNING:

DO NOT ATTEMPT TO USE ANY FIREARM WITHOUT HAVING A COMPLETE UNDERSTANDING OF ITS PARTICULAR CHARACTERISTICS AND SAFE USE.

WARNING:

YOU SHOULD NEVER DEPEND ON A SAFETY MECHANISM OR ANY OTHER MECHANICAL DEVICE TO JUSTIFY CARELESS AND IMPROPER HANDLING.

WARNING:

THIS FIREARM WAS MANUFACTURED TO PERFORM PROPERLY WITH THE ORIGINAL PARTS AS DESIGNED. PLEASE MAKE SURE ANY PARTS YOU BUY ARE INSTALLED CORRECTLY AND THAT NEITHER REPLACEMENTS NOR ORIGINALS ARE ALTERED OR CHANGED. PUTTING A FIREARM TOGETHER INCORRECTLY OR WITH MODIFIED PARTS CAN RESULT IN DAMAGED FIREARM, DANGER, AND INJURY OR DEATH. ANY MODIFICATIONS TO FIREARM WILL VOID FACTORY WARRANTY.

03 | SAFETY PRECAUTIONS

SAFETY MEASURES

1. Keep your fingers away from the muzzle. Never pull a shotgun toward you by the muzzle.
2. Always point the shotgun in a safe direction even though it may be unloaded. Do not point the shotgun at anything you do not intend to shoot. Avoid all horseplay while handling a shotgun.
3. When handling your shotgun, never allow fingers or any object to touch the trigger until you are ready to shoot.
4. Keep the safety "ON" unless you are actually ready to fire. Treat every shotgun with respect and caution.
5. Be sure the barrel is clear of obstructions, including dirt, snow or water.
6. Always treat every shotgun as if it were loaded.
7. Keep the shotgun unloaded when not in use and never load your shotgun if you do not intend to shoot it.
8. Always aim at a safe target, taking care that it does not conceal any other object. Be sure of your target before you pull the trigger. Never shoot at sounds, at a flat surface or water. Do not fire at a target, which allows ricochets or deflections.
9. Store shotguns and ammunition separately, beyond the reach of children, better if under lock key. Shotguns should always be unloaded when stored.
10. Never carry a loaded shotgun inside a vehicle, house, camp or public place. When transporting the shotgun keep the shotgun safety "ON" and unloaded. Never climb a tree or fence, or jump a ditch with a loaded shotgun.
11. Never rely on anyone's words that the safety is "ON" or unloaded. Always check to see if the safety is "ON" and unloaded when getting it from another person or storage.
12. Avoid alcoholic beverages or drugs before or during shooting.
13. Always use eye and hearing protection and make sure bystanders are similarly protected.
14. Although the actual shotgun does not contain any lead, it fires ammunition containing lead or lead compounds, which are known to be dangerous for health. Anyone who shoots the shotgun stands near the shotgun shooter, or cleans the shotgun should take protective health measures. Avoid exposure to lead while handling and wash your hands after contact. Proper air ventilation is absolutely necessary when shooting indoors.
15. Any damage, malfunction, injury or death resulting from the use of faulty, non-standard, remanufactured, hand loaded or reloaded ammunition is the responsibility of the user. The user is solely responsible for the damage, injuries or death resulting from carelessness or misuse of the shotgun.

04 | TECH SPECS

Model	M5
Caliber	12 Gauge
Chamber	2.75in / 3in
Action	Pump Action
Capacity	4 + 1 (3" shell)
Choke	Open cylinder
Barrel	Contoured
Barrel Length	508mm. / 20in.
Overall Length	1016mm. / 40in.
Overall Width	51mm. / 2in.
Overall Height	178mm. / 7in.
Front Sight	Bead
Rear Sight	Serration on receiver
Trigger Pull	2.72 - 4.08kgs. / 6 - 9 lbs.
Length of Pull	343mm - 349mm (13.5in - 13.75in)
Drop at heel	64mm - 67mm (2.5in - 1.63in)
Drop at comb	38mm - 41mm (1.5in - 1.63in)
Weight, Empty	3.40kgs. / 7.5lbs.
Weight, Loaded	3.64kgs. / 8lbs.
Finish	Matte Nickel
Stock	Polymer buttstock with rubber buttpad and polymer forehand operating handle
Other feature	Precision reamed and chambered ordnance steel barrel, cross bolt safety and damascened bolt, with heat shield on barrel



05 | BASIC PARTS

M5 SHOTGUN
BASIC PARTS

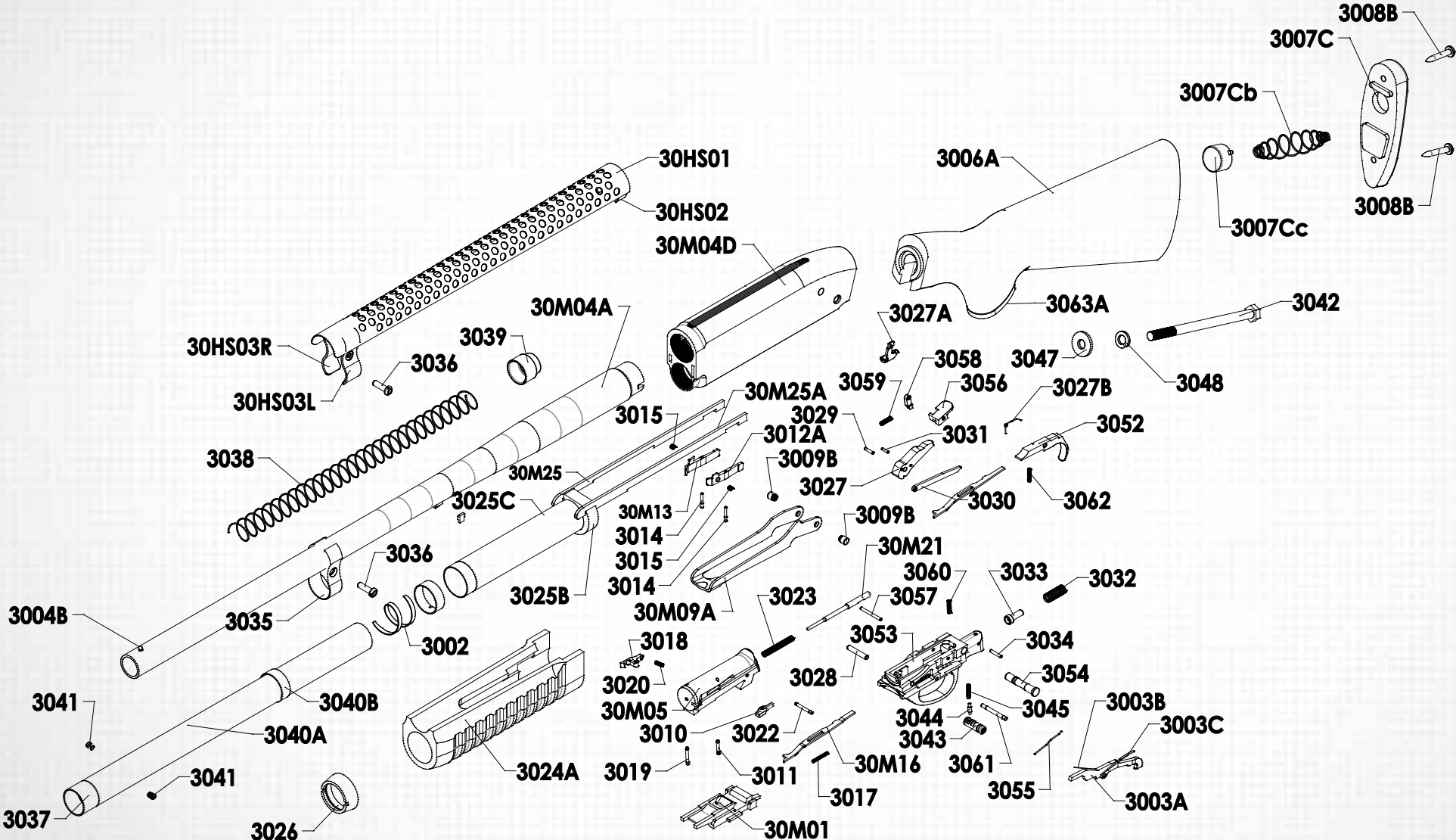
PART NAME	PART NUMBER
Action Slide	30M01
Action Slide Spring	3002
Action Slide Release Lever	3003A
Action Slide Release Lever Spring	3003B
Action Slide Release Lever Retainer Spring	3003C
Barrel	30M04A
Front Sight	30004B
Receiver	30M04D
Bolt	30M05
Buttstock	3006A
Buttpad	3007C
Buttstock Shell Pocket Spring	3007Cb
Spring Cap	3007Cc
Buttpad Retainer Screws	30008B
Bullet Carrier	30M09A
Bullet Carrier Button	3009B
Carrier Operating Cam	3010
Carrier Operating Cam Pin	3011
Cartridge Stop Left	3012A
Cartridge Stop Right	30M13
Cartridge Stop Pin	3014
Cartridge Stop Spring	3015
Ejector	30M16
Ejector Spring	3017

PART NAME	PART NUMBER
Extractor	3018
Extractor Hingh Pin	3019
Extractor Hinge Spring	3020
Firing Pin	30M21
Firing Pin Retainer Pin	3022
Firing Pin Spring	3023
Forehand Operating Handle	3024A
Action Slide Bar Right	30M25
Action Slide Bar Left	30M25A
Action Bar Retainer	3025B
Forehand Operating Tube	3025C
Hammer	3027
Hammer Catch	3027A
Hammer Catch Spring	3027B
Hammer Pivot Pin	3028
Hamnmer Hinge Pin	3029
Hammer Strut	3030
Hammer Strut Pin	3031
Hammer Spring	3032
Hammer Spring Guide	3033
Hammer Spring Retainer Pin	3034
Magazine Band	3035
Magazine Band Screw	3036
Magazine Cap	3037

PART NAME	PART NUMBER
Magazine Spring	3038
Magazine Spring Follower	3039
Magazine Tube	3040A
Magazine Ring	3040B
Magazine Tube Lock Screw	3041
Stockbolt	3042
Safety Button	3043
Safety Plunger	3044
Safety Plunger Spring	3045
Stockbolt Washer	3047
Stockbolt Lock Washer	3048
Trigger	3052
Trigger Guard	3053
Trigger Guard Retainer Pin	3054
Trigger Guard Retainer Pin Spring	3055
Trigger Lock	3056
Trigger Lock Pin	3057
Trigger Lock Pawl	3058
Trigger Lock Pawl Spring	3059
Trigger Lock Spring	3060
Trigger Pin	3061
Trigger Spring	3062
Grip Cap	3063A
Heat Shield	30HS01

06 | EXPLODED VIEWS

M5 SHOTGUN



07 | OPERATING INSTRUCTIONS

TO MAKE SAFE



With hammer cocked, push safety button from left to right until red band is covered (Note: Safety button is in trigger guard bow). This locks trigger and gun cannot be fired. Always lock trigger when gun is loaded.

TO RELEASE SAFETY



Push safety button from right to left exposing red band. Gun is ready to fire.

TO LOAD CHAMBER



Open action fully by pulling back the forearm up to rear position. If gun is locked, press action slide release lever located on rear left side of trigger guard bow. Insert shell directly to chamber and push forearm forward to close action.

TO LOAD MAGAZINE TUBE



With trigger locked, insert shell upward into bottom of receiver and push forward into magazine tube past cartridge stops. Repeat until magazine tube is full.

TO OPERATE



When gun is fired, action automatically unlocks. Forearm can be fully drawn back and pushed forward. This extracts and ejects fired shell through ejection port opening facing downward.

TO REMOVE LOADED SHELL FROM MAGAZINE



Turn gun over, trigger guard up, and barrel pointing down. Press cartridge stop left to release shell from magazine. Remove shell and repeat until magazine is empty.

08 | OPERATING INSTRUCTIONS

DISASSEMBLY

TRIGGER ASSEMBLY

With pencil-point small screwdriver, eject trigger guard retainer pin from right to left side of receiver. Lift rear part of trigger guard until guard projection clears stock, then pull back and up.

ACTION SLIDE

Move forearm backward until shoulders of slide are centered in the square cuts of receiver. Pull action slide upward then fully move forearm forward to free action slide from action slide bar. Now lift the action slide out of receiver

CARRIER AND BREECH BOLT

Lift the carrier-front end and slide the bolt forward. Press the two legs of carrier inward to disengage buttons from receiver hole and pull out carrier. With bolt centered in the receiver square opening, lift the bolt rear end first out of the receiver.

ASSEMBLY

1. BREECH BOLT: With its round flat surface facing receiver opening and with extractor forward, insert breech bolt into receiver bottom and slide forward.
2. BULLET CARRIER: Draw forearm fully backward, grasp front and sides of carrier, flat side up. Squeeze carrier sides slightly and engage button ends in proper holes in receiver. Raise front end of carrier and lower to rest over breech bolt.
3. ACTION SLIDE: Pull breech bolt back to center in square cuts of the receiver. Move forearm until action bar hook is slightly back of front square cut of the receiver and drop slide into receiver through square cuts (Make sure action bar hook has engaged corresponding cut in slide).
4. TRIGGER GUARD ASSEMBLY: With forearm fully forward, hammer in the trigger assembly cocked, insert front end of trigger guard with guide prongs fitting into grooves in receiver walls and push forward and down.
5. TRIGGER GUARD RETAINER LOCK PIN: Push small end of pin into receiver from left to right (Before driving pin in, align trigger guard until pin hole shows clear passage).

ACTION SAFETY BUTTON

Further disassembly of trigger guard safety button is not recommended for routine cleaning. These procedures serve as a guide only for qualified gunsmith.

1. Lay down the gun with trigger guard up. Cock the gun. Push safety button to expose red band, then change the position of the gun right side-up.
2. Using long-nose pliers, grip tightly the end portion of safety and rotate safety button 90° clockwise so that the plunger is freed from the notch of safety button. (Notch and slots of safety button will now appear).
3. After rotating the safety button, push it downward to remove. Restrain safety button plunger as it is under spring pressure.

09 | MAINTENANCE

CARE OF SHOTGUN

After firing, run an oil-soaked patch through the bore several times using cleaning rod. Then clean the bore with dry patch. If the firearm is to be stored, swab the bore with an oily patch. Likewise, the exterior of the firearm should be wiped with an oily patch to protect surface from rusting.

WARNING:

BEFORE FIRING, THE BARREL BORE SHOULD BE CLEANED FREE OF GREASE TO EASE PASSAGE OF BULLET AND TO PREVENT SWELLED BORE OR INJURY TO BARREL



CAUTION

THE SAFETY IN YOUR FIREARM IS CORRECTLY DESIGNED, FITTED AND TESTED. HOWEVER, ANY MECHANICAL DEVICE CAN FAIL. NEVER POINT YOUR FIREARM AT ANYTHING BUT A SAFE TARGET AND NEVER RELY UPON THE SAFETY TO JUSTIFY CARELESS HANDLING.



SCAN QR

SEE FULL VIDEO TUTORIALS ON OUR
WEBSITE

10 | MAINTENANCE

STORAGE AND TRANSPORTATION

When storing the firearm and ammunition, store in separate locations, store ammo in a cool, dry location.

When storing the gun for a prolonged period of time, It is necessary to oil it heavily with an acid-free lubricant. The external parts must be coated with an anti-rust oil or grease to prevent moisture causing the parts to rust and malfunction. Before usage, the shotgun must be cleaned and wiped dry again as discussed previously.

WARNING:

CHILDREN ARE ATTRACTED TO AND CAN OPERATE FIREARMS THAT CAN CAUSE SEVERE INJURIES OR DEATH. PREVENT CHILD ACCESS BY ALWAYS KEEPING FIREARMS LOCKED AWAY AND UNLOADED WHEN NOT IN USE. IF YOU KEEP A LOADED FIREARM WHERE A CHILD OBTAINS AND IMPROPERLY USES IT, YOU MAY BE FINED OR SENT TO PRISON.

WARNING:

THE FIREARM SHOULD BE RE-STORED IN ROOMS WITH A DRY ATMOSPHERE AND WITH THE LEAST HUMIDITY. IT SHOULD NOT BE STORED ENCASED IN LEATHER OR ANYTHING THAT WILL ATTRACT AND HOLD MOISTURE, CAUSING IT TO RUST.

ORDERING PARTS

Visit RIA website to browse, learn more about and purchase parts and ammunition for all of your Rock Island Armory products.

 www.advancedtactical.com



WARRANTY REGISTRATION

Armcor's warranty covers its firearms and parts. We offer limited lifetime warranty on our products for their intended purpose. As with any product, abuse, gunsmithing by an unqualified person and normal wear and tear are excluded. Additionally, if the firearm was modified and/or repaired by an unqualified gunsmith without permission from Armcor, then the warranty will be void. If warranty work should be required, return the firearm to the address listed below. There is no refund for the shipping cost. Gunsmithing services are available by registered Armcor Gunsmithers. Please email the address below.

To register your firearm, please go to www.rockislandarmory.com/support-center/warranty/ and complete online warranty form. In comments section, write warranty registration and press submit. You can also go to www.rockislandarmory.com and press warranty section at the bottom.

For more information on warranty, visit www.rockislandarmory.com, or email support@armcor.com

Armcor Precision International
150 North Smart Way
Pahrump, NV 89060
Email: support@armcor.com

IMPORTANT WARRANTY INFORMATION

Our Rock Island Armory shotguns are warranted to function only with Factory Ammo and the Original Factory Magazine Tube. Use of Handloads is not covered in Warranty of Repair for the function of the Firearm.

DUE TO THE FIT AND TIGHTNESS OF FIREARM, RIA RECOMMENDS A BREAK-IN PERIOD OF 500 ROUNDS.

THIS IS HOW YOU VOID YOUR WARRANTY

- * Refinishing your RIA firearm
- * Misuse, Mishandling, Dropping your RIA Firearm
- * Firing Remanufactured or Reloaded Ammunition
- * Not properly reassembling your RIA Firearm resulting in damage, ie reverse plugs!
- * Any addition of after market parts
- * Unauthorized repairs done by any other than Rock Island Armory

LIMITS ON WARRANTY (will not cover)

- * Finish, Holster wear, Scratches, Chemical damage
- * After Market Magazines
- * Damage to Factory Magazines
- * Sights not installed by Rock Island Armory
- * Recoil Springs

WE RESERVE THE RIGHT TO CHARGE FOR LABOR, PARTS AND SHIPPING TO RETURN YOUR RIA FIREARM
BACK TO FACTORY SPECIFICATIONS IF IT HAS BEEN ALTERED.

NOTES



WWW.ROCKISLANDARMORY.COM

