



KELTEC[®]



1505 Cox Rd Cocoa FL 32926
p: 800.515.9983 f: 321.631.1169
e: info@keltecweapons.com



KELTECWEAPONS.COM

P50[™]



**SAFETY,
INSTRUCTION
& PARTS MANUAL**

⚠ WARNING: Read this manual carefully before loading or using the P50.

TABLE OF CONTENTS

Safety Information and Warnings	2
Overview	5
I. Description	5
II. Safety	6
III. Nomenclature.....	7
IV. Specifications	7
A. Overall.....	7
B. Measurements	7
V. Ammunition	8
Operating Instructions	9
I. Loading Magazine and Chambering.....	9
II. Sights	12
III. Firing	13
IV. Unloading.....	14
Breakdown	15
I. Disassembly.....	15
II. Assembly.....	17
III. Proper Care	17
A. Maintenance	17
B. Lubrication	18
C. Troubleshooting	18
Customer Service	20
I. Service/Repair	20
II. Warranty.....	20
Exploded View and Parts	22
I. Trigger Assembly	22
II. Grip Assembly.....	23
III. Bolt Assembly	24
IV. Receiver Assembly	25

SAFETY INFORMATION AND WARNINGS

This manual explains the function and handling of the P50 and warns of the potential dangers, including death or serious personal injury that can result from the unsafe use of the P50. This manual should always accompany the P50 and be transferred with it, as well as, if it is sold or loaned to another person.

Even if you are an experienced shooter, you must READ THIS ENTIRE MANUAL CAREFULLY before loading or firing the P50. This manual gives basic instructions on the proper handling and functioning of the P50. The safety of yourself and that of others will depend on you following the instructions and warnings in this manual. Always use safe firearms practices. If you are unfamiliar with firearms, take a course in the safe handling of firearms run by a qualified firearms instructor, your local gun club, or a similar qualified organization.

This manual contains several safety warnings and instructions preceded with **WARNING**, **CAUTION**, or **NOTICE**. These signal words are designed to draw your attention to important safety information.

WARNING indicates a hazardous situation which, if not avoided, could result in death or serious injury.

CAUTION indicates a hazardous situation which, if not avoided, could result in minor or moderate injury.

NOTICE addresses safety practices not related to personal injury.

WARNING Firearms can cause death or serious personal injury. Safety must be the prime consideration of anyone who handles firearms.

WARNING The P50 is designed to function reliably with proper care and knowledgeable use. Do not use your P50 unless you fully understand how to safely operate it.

WARNING It is your responsibility to use safe firearm handling habits. Accidents are the result of violating the rules of safe firearms handling as well as the warnings noted in this manual.

WARNING Always seek a doctor's advice if you are taking medication and/or are pregnant to be sure that you are able to shoot and handle a firearm safely. Never drink alcoholic beverages and/or take drugs before or while shooting. Your vision and judgment could be seriously impaired, making your firearm handling unsafe.

WARNING Always treat a firearm as though it were loaded.

⚠️ WARNING Always keep the muzzle pointed in a safe direction. Never point a firearm at anyone or anything you do not intend to shoot.

⚠️ WARNING Always keep your finger off the trigger and outside the trigger guard until you have made the decision to fire.

⚠️ WARNING Always wear hearing and eye protection when using your firearm.

⚠️ WARNING Never accept or pick up a firearm without checking the magazine and the chamber to make sure that it is unloaded.

⚠️ WARNING Do not trust the extractor to remove the cartridge from the chamber. Always check to confirm that it is empty.

⚠️ WARNING Always make sure the P50 is unloaded, on SAFE, magazine removed, and shows a cleared chamber before handing it to another person.

⚠️ WARNING Never allow a firearm to be used by individuals who are not familiar with its safe operation and rules of firearm safety.

⚠️ WARNING Never alter or modify the P50 because this could cause it to malfunction, create a dangerous condition, and void the warranty.

⚠️ WARNING Be sure all accessories are compatible with the firearm, properly installed on the firearm, and that the accessories do not interfere with safe operation of the firearm. Follow the instructions provided by the accessory manufacturer to the extent those instructions are not inconsistent with the warnings and instructions contained in this manual.

⚠️ WARNING If the P50 is dropped or forcefully struck, it could be damaged and may not function properly. Have it inspected by Kel-Tec CNC Industries, Inc. before continued use.

⚠️ WARNING Never load a firearm except immediately before shooting. When transporting your firearm, be sure your firearm is unloaded, on SAFE, and the action is open.

⚠️ WARNING Never store or transport firearms and ammunition together, keep them locked up and away from children and other unauthorized persons.

⚠️ WARNING Always secure firearms from children. You are responsible for the firearm's safety and security.



Most ammunition contains lead in the projectile and/or primer. Discharging firearms in poorly ventilated areas, cleaning firearms, or handling ammunition may result in exposure to lead and other substances known to cause birth defects, reproductive harm, cancer, and other serious physical injury. Have adequate ventilation at all times. Wash hands thoroughly after exposure.

The P50 was tested, carefully inspected, and packaged before it left the factory. Kel-Tec CNC Industries, Inc. cannot control what happens to the P50 after it leaves the factory. Therefore, carefully examine the P50 when you acquire it to ensure that it is unloaded and undamaged. If you do not understand any of the warnings and instructions in this manual or have any problems operating the P50, contact Kel-Tec CNC Industries, Inc. at:

KEL-TEC CNC INDUSTRIES INC

1505 Cox Road
Cocoa, FL 32926

Telephone Number: 321-631-0068 Toll free: 1-800-515-9983

Hours: M-F 9am-6pm EST (excluding holidays)

Website: <https://www.keltecweapons.com>

Email: customerservice@keltecweapons.com

The current version of the instruction manual can also be downloaded at:
<https://www.keltecweapons.com>

OVERVIEW

I. DESCRIPTION

The P50 semi-automatic pistol uses a distinctly featured top mounted magazine for 5.7 X 28mm ammunition. It is designed to be holstered, carried in a backpack or on a sling using the integrated quick disconnect ports. The double stack magazine holds 50 rounds plus an additional round can be carried in the chamber of the pistol. The pistol is molded to fit the hand and adds a “gator grip” pattern for additional control.



Figure 1

With a twelve-pound pull of force, the charging handle will chamber the initial round. Subsequent rounds will be rotated 90° from the magazine and fed from the bolt. The total weight of the pistol is 3.5lbs which very light for its capacity. It consists of an aluminum receiver that houses the bolt and barrel assemblies. A picatinny-style rail runs throughout the entirety of the receiver forward of the ejection port. There is also a rail integrated forward of the trigger guard to allow for the attachment of accessories, such as a flashlight or laser.

NOTICE Check with federal and local laws before attaching ANY type of extra grip to this rail.

The grip and handle are the only exterior components made of an impact-resistant glass-reinforced Nylon. Most of the remaining pistol is made of steel and aluminum.

NOTICE Check with federal and local laws before attaching ANY type of stock, brace, or other attachment that extends to the back of the pistol.

The pistol's serial number is engraved near the area shown in *Figure 1*. The magazine body seats between the receiver and grip without give or play. By pressing the release lever underneath the charging handle, the receiver pivots on the hinge axis near the muzzle and the magazine becomes accessible. If the magazine is not seated correctly in the pistol, the magazine or pistol could become damaged from closing the upper assembly.

An extractor and firing pin are housed inside the bolt. The front sight post is threaded into the receiver and is adjustable with a flathead screwdriver. Recoil springs are guided by both weighted bolt rods and recoil spring rods allowing for smoothness of the bolt and a reduction in recoil. The free-floating barrel is held captive in the receiver.

II. SAFETY

An ambidextrous safety lever is located in front of the release lever in the rear of the grip. LEVER DOWN is FIRE mode. A TRIANGLE is visible next to the position. LEVER UP is SAFE mode. A CIRCLE is visible next to the position. The firing mechanism is hammer fired and of conventional single action type. The safety disconnects the trigger mechanism and fully blocks the sear so the hammer cannot drop.

To put the firearm in the SAFE position; visually verify (shown in unloading procedure pg.14, fig. 12) that there is no round in the chamber, pull back the handle and release, then switch the safety lever up from the position shown in *Figure 2*. A good safety practice is to not have the magazine in the P50 when pulling back the handle. This is the best way to put the P50 on SAFE to minimize the risk of accidentally chambering a round.

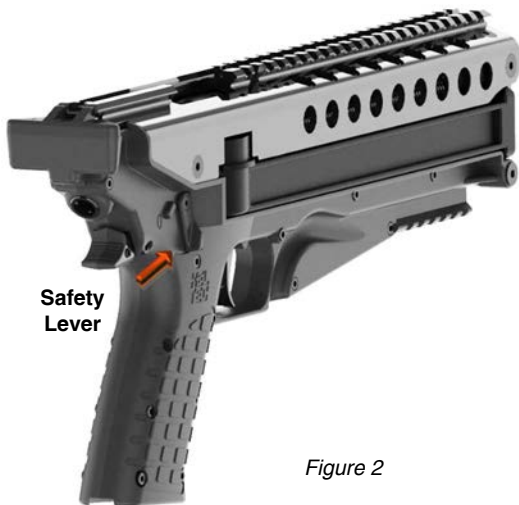


Figure 2

WARNING The safety lever **MUST** reach its intended position. If you do not completely disengage or engage the safety lever and instead stop the safety midway, you may still be able to pull the trigger. The safety will not engage unless the hammer is fully cocked. The handle may need to be completely pulled back again in either of these scenarios to completely engage the safety.

WARNING Never completely rely on a mechanical safety as it can fail or become unintentionally disengaged. A mechanical safety is **NOT A SUBSTITUTE** for safe firearm handling practices.

III. NOMENCLATURE

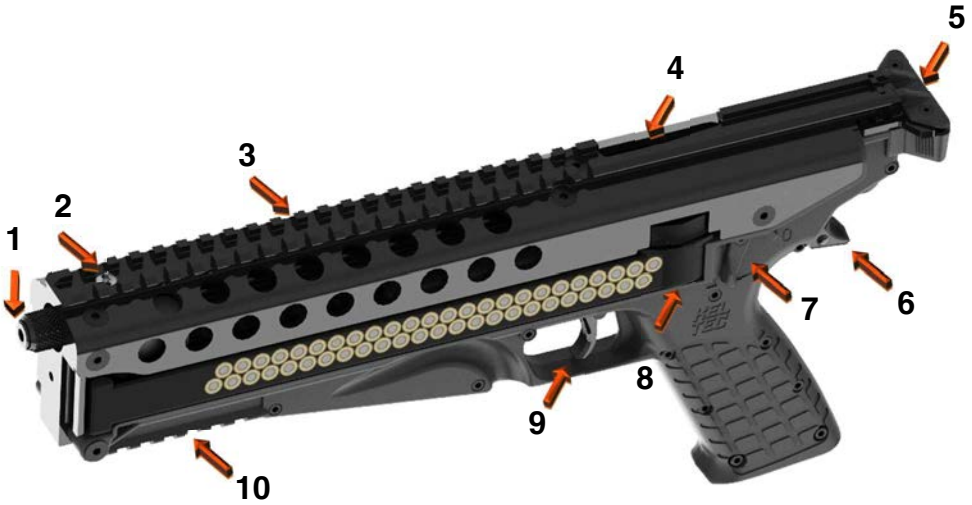


Figure 3

1 – THREAD PROTECTOR	6 – RELEASE LEVER
2 – FRONT SIGHT POST	7 – SAFETY LEVER
3 – PICATINNY-STYLE RAIL	8 – MAGAZINE
4 – EJECTION PORT	9 – TRIGGER
5 – CHARGING HANDLE	10 – ACCESSORY RAIL

IV. SPECIFICATIONS: P50

A. Overall

Caliber	5.7 X 28mm
Operation	Straight blowback
Mode of Fire	Semi-automatic
Trigger System	Hammer fired, single-action
Magazine Capacity (Included)	50 rounds

B. Measurements

Weight

Pistol w/o Magazine	3.2 Lbs	1.43 kg
Loaded Magazine (50 rounds)	1.1 Lbs	0.49 kg

Dimensions

Overall Length	15 in	380 mm
----------------	-------	--------

Barrel Length	9.6 in	244 mm
Width	2 in	50 mm
Height	6.7 in	170 mm
Rifling	1 in 7 in	1 in 356 mm

Force

Trigger Pull	5.0 lb	1.8 kg
--------------	--------	--------

V. AMMUNITION

The P50 pistol has been designed and chambered to operate with standard 5.7 x 28mm cartridges. Use only US made, SAAMI spec, commercially manufactured, clean, dry, high-quality, and good condition ammunition. Never use non-standard, reloaded or damaged cartridges. Use only brass-cased ammunition. Any other ammunition is considered non-standard and use of it may cause functioning issues and void the warranty of the firearm.

KelTec firearms are manufactured from high quality materials and will provide extended service life. However, all warranties, expressed or implied, are voided and Kel-Tec CNC Industries, Inc. will not be liable for property damage or personal injury and consequential damages, if faulty, non-standard, or reloaded ammunition is used in any KelTec firearm.

Not all ammunition produces the same result. We recommend that once you find a brand that functions best, keep using it. Kel-Tec CNC Industries, Inc. does not recommend using hand loads, reloads, remanufactured ammunition, foreign or military surplus ammunition of unknown or questionable quality. The use of this type of ammunition will: void the warranty, be dangerous, and possibly cause death or serious injury if the ammunition is not made to the proper specifications.



WARNING Never use non-standard ammunition or cartridges with pressures or dimensions exceeding SAAMI standards, failure to follow this warning may result in serious injury or death and damage to your firearm.

NOTICE 5.7 X 28MM CARTRIGES HAVE A DRY COATING AND CAN STICK IN THE CHAMBER IF IT IS NOT LUBRICATED.

The chamber of the P50 should be lubricated before use. If it is not, you may have to manually clear the round. After firing there could be a fail to extract or the cartridge could fracture off and stick in the chamber. In the latter, a certified gunsmith should remove the partial case to avoid damaging the chamber.

OPERATING INSTRUCTIONS

I. LOADING MAGAZINES AND CHAMBERING

The P50 accepts a 5.7 X 28mm FN PS90 style magazine that holds up to 50 rounds.

NOTICE Check with federal and local laws before choosing which capacity magazine you will be using. Some states require reduced capacity magazines.

1. To start loading, position a cartridge with the rim touching the back of the wall of the recessed area. Press the cartridge downward in the center of the magazine loading area shown in *Figure 4*.
2. Slide the round all the way back before pushing another round down on top of it. The round will rotate and feed into the others below. Continue loading the magazine by pushing another round down and then sliding the round back.

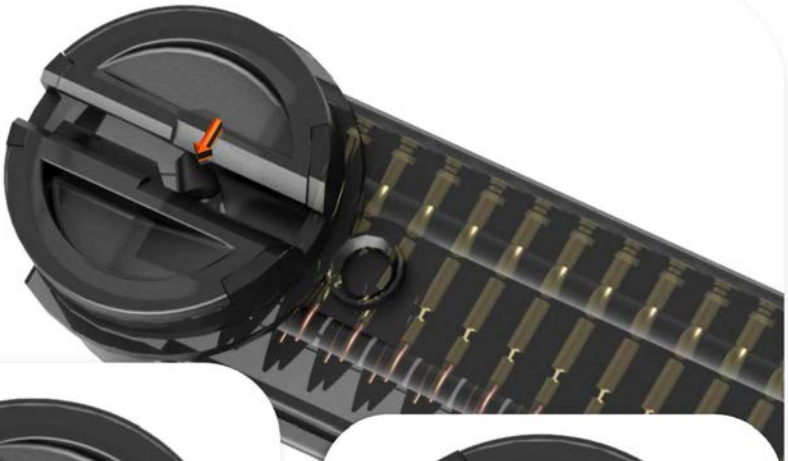


Figure 4

⚠️ WARNING The P50 has a hinge axis (*Figure 5*) as well as other moving parts. During loading, firing, or inspection, make sure that fingers, body parts, or other objects are clear from the path of any moving mechanical parts.

⚠️ WARNING Always check that the ammunition is clean, undamaged, and the correct caliber for the pistol. Forcing substandard ammunition into the chamber could result in damage to property, injury, or death.

⚠️ WARNING Always position the safety lever upward in the SAFE position when loading and unloading the firearm. The hammer must be cocked to do this.



Figure 5

With the pistol on SAFE (the hammer must be cocked), grab the grip with your shooting hand, using your other hand, grab the upper assembly near the operating handle and rotate open to 90°. The key to loading is keeping everything in alignment.

Place the loaded magazine into the receiver by aligning it with the cutout area shown in *Figure 5*. There is a cutout in the magazine that also needs to align with the bottom of the barrel trunnion. Now align the front of the magazine tabs next to the hinge axis on the grip.

CAUTION Clamping parts can pinch skin and loose clothing.

Establish a good grip on the receiver near the handle. Your hand must cover the receiver and extend around to also grip the magazine shown in *Figure 5*. Be very careful not to place your fingers underneath the magazine when closing the receiver. **MAKE SURE THE BOLT COMPRESSES THE TOP ROUND IN THE MAGAZINE BEFORE CLOSING THE RECEIVER ONTO THE GRIP.**

Firmly close the group to the hooks of the release catch. You will hear a “click” when it is closed properly. A good practice is to press the release lever up (*Figure 6*)

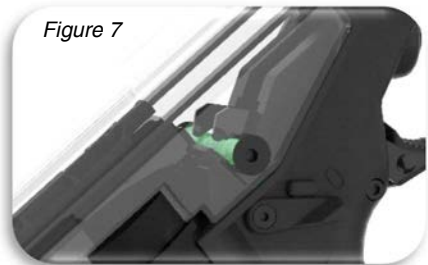
with your thumb to ensure the hooks are locked in the proper position (*Figure 7*) on the catch.



WARNING Do not pull the trigger, manipulate any parts, or obstruct the path of the receiver while the latch is open.

WARNING If the release latch is not completely closed as shown in *Figure 7* the pistol can still fire and cause an unsafe event.

NOTICE Not all magazines close with ease as the magazine becomes full.



To chamber: hold the firearm in your shooting hand with the safety lever on SAFE (lever up), keep the muzzle pointed in a safe direction and your finger outside the trigger guard pointing forward. Grab the operating handle and firmly pull the bolt all the way back and release. Releasing

the bolt on its own power will allow the it to properly chamber a round, while slowly guiding it closed may cause a malfunction.



Figure 8

**A ROUND IS NOW
CHAMBERED IN THE
PISTOL. ENSURE
SAFETY IS ENGAGED
UNTIL THE FIREARM IS
TO BE FIRED.**

CAUTION Springs and sliding parts can pinch skin and loose clothing.

When chambering a round from the magazine or when the final round is fired, the bolt **WILL NOT** lock back.

II. SIGHTS

The P50 sights come from the manufacturer with a general alignment. It is always best to accurately align and zero your sights. The rear sight adjusts for

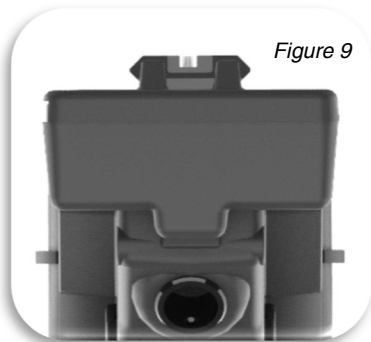


Figure 9

windage/horizontal alignment and the front sight adjusts for



Figure 10

elevation/vertical alignment. To make vertical adjustments, rotate the front sight post using a flat head screwdriver. Make 1/8 clockwise turns (clicks) for your shot group to adjust upward by 1 MOA, do the opposite for your shot group to adjust downward.

For adjusting the rear sight, careful consideration is needed. If you need to shift your shot group to the left, rotate the left side set screw counterclockwise and then the right set screw clockwise. Rotating each screw 1/4 turn allows for approximately 1" adjustment at 30 yards.

III. FIRING

⚠ WARNING Never discharge a firearm without proper shooting glasses and ear protection.

⚠ WARNING Never shoot until you are sure of your backstop and what lies beyond it.

⚠ WARNING Never shoot at a hard surface, such as a rock, or a liquid surface, such as water, because a bullet may ricochet and travel in any direction, striking you or someone else.

⚠ WARNING When firing on a target range, be alert and follow the range officer's commands. Always be aware of other people so that they cannot accidentally walk into the line of fire. Make sure your "audience" is always at least 6 feet behind you, not next to you, when firing.

⚠ WARNING Always carry the P50 unloaded while on a range until preparing to fire. Always keep the P50 pointed towards the backstop and/or safe direction when loading, firing, and unloading it.

⚠ WARNING After firing several rounds, the exterior metal parts of the P50 get very hot and can cause severe burns if touched.

⚠ WARNING The P50 ejects spent cases upwards to the right side of the receiver. Even after limited firing those cases are hot and can cause burns if contacting unprotected skin.

⚠ WARNING The P50 is a relatively short firearm. Make sure you have a firm grasp of the grip and at no time extend fingers or body parts into the line of fire.



⚠ WARNING The P50 has a moving bolt and charging handle. During firing or inspection, make sure fingers or body parts are safe from this path or any moving mechanical parts.

Once all warnings are understood and implemented, prepare to fire:

1. Center the front sight in between the rear sight notch and align the post as shown in *Figure 9*. Take aim at the target while also taking notice of the target's backdrop.
2. Disengage the safety by sweeping the safety lever down with your thumb.

⚠ WARNING The P50 is now able to fire upon trigger pull.

3. Place trigger finger into the trigger guard.
4. Slowly squeeze the trigger until a round is fired. Upon firing, the bolt moves rearward extracting and ejecting the empty case, and also returns to the forward position feeding another round automatically. Release the trigger and you are ready to fire another round.
5. To fire another round, squeeze the trigger. This sequence can be repeated until the last round has been fired. The hammer will be cocked on the last round and a dry fire can be prevented by counting your rounds. After the magazine is emptied or you are finished firing, sweep the safety lever up to **SAFE** with your thumb.

⚠ WARNING If the last round was not fired, there will be a live round in the chamber.

IV. UNLOADING

⚠ WARNING Always make sure the muzzle is pointed in a safe direction when unloading.

1. With the pistol on **SAFE**, press the release lever and remove the magazine. Use technique described in loading for securing and removing the magazine.
2. Turn the P50 so that the ejection port is visible, pull back the operating handle, and rotate the receiver so that the chamber of the barrel is visible (*Figure 12*). Visually and physically inspect the chamber and bolt to ensure it is clear.

Figure 12



BREAKDOWN

I. DISASSEMBLY

WARNING Never rely on your memory to determine whether the P50 is loaded or unloaded.

WARNING Always wear safety glasses when disassembling the P50 to protect your eyes from components that are under pressure, such as springs.

WARNING If the P50 has been fired, wait a sufficient amount of time for the components to cool before attempting disassembly. Failure to do so may result in burns.

NOTICE For disassembly, the P50 safety lever should be in the **SAFE** position, firearm cleared, and the magazine removed.

1. With the receiver group rotated upward, place one hand on the receiver group and to access the exposed portion of the bolt (*Figure 13*). Be careful not to put too much strain on the hinge axis while the receiver group open.

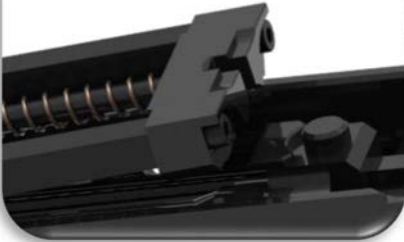
CAUTION Bending, twisting, or creating any type of torque in any direction other than the intended motion of the hinge axis will cause the axis and/or other joining parts to break.

2. Take a cartridge and pry the recoil block off of the trunnion. Another option is to use two fingers to pry the recoil block off the trunnion.
3. Once the recoil block is released from tension against

Figure 13

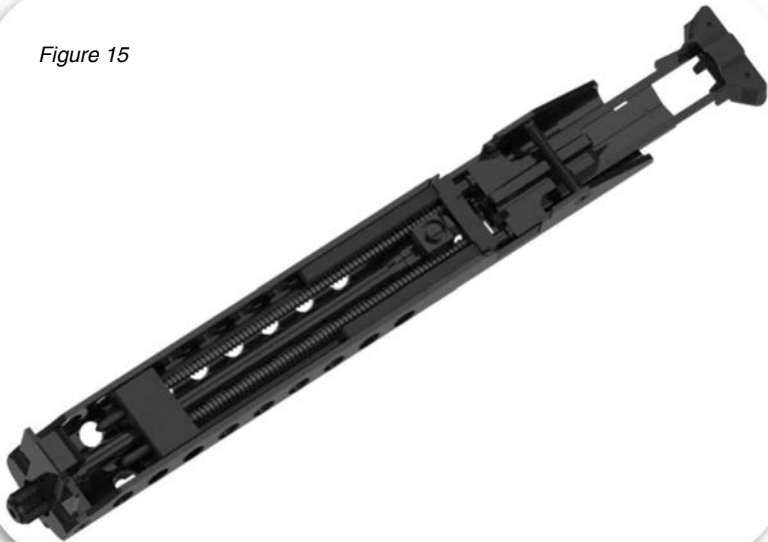


Figure 14



the trunnion, pull the bolt assembly down just enough to allow for the handle assembly to have room to clear the top of the bolt cover. Unlatch the operating handle (*Figure 15*) and remove it.

Figure 15



4. Now the bolt group can be removed from the receiver.
5. This is as far as Kel-Tec CNC Industries, Inc. recommends field stripping the P50. From this point, the cleaning procedure can be implemented if necessary.

⚠ WARNING Further disassembly should only be performed by a certified gunsmith or Kel-Tec CNC Industries, Inc. Attempting further disassembly may void your warranty.

II. ASSEMBLY

Figure 16



⚠ WARNING Always wear safety glasses when reassembling the P50 to protect your eyes from springs.

Assembly is essentially disassembly in reverse; however, some steps warrant extra attention.

1. Place the bolt group into the receiver, leaving room to insert the handle assembly. The handle assembly needs to connect in front of the bolt cover.

2. Slide in place and raise the recoil block above the trunnion.
3. Secure the recoil block to the trunnion using either method demonstrated in disassembly.
4. Close the receiver and secure using the release lever.

III. PROPER CARE

A. Maintenance

⚠ WARNING Always wear safety glasses when cleaning the P50 to protect your eyes from cleaning materials.

⚠ WARNING Always make sure that no ammunition is located in the area where you clean the P50. Cleaning solvents can affect the primer and powder in ammunition which cause it to malfunction. This could result in a bullet being pushed into the barrel of the P50 and getting stuck. Firing another round with a bullet stuck in the barrel could cause the barrel to burst and result in death or serious personal injury and/or damage to the P50.

⚠ WARNING If the P50 has been fired, wait a sufficient amount of time for the components to cool before attempting disassembly. Failure to do so may result in burns.

Your P50 is a precision instrument and will provide a lifetime of faithful service if it is properly cleaned and maintained. It is recommended that you clean your P50 after every shooting session or more frequently if needed.

⚠️ WARNING Be sure to unload your P50 (see Unloading on pg. 14) before performing any cleaning or maintenance procedures.

NOTICE Only use commercially available gun solvent and gun oil or a cleaner-lubricant-preserved. Use of improper cleaning fluids could damage the P50 and void the warranty.

1. Disassemble the P50 (see Breakdown on pg.15).
2. Thoroughly clean all exterior sides of the bolt with solvent and brush.
3. Brush the barrel bore and chamber with a good powder removing solvent and bore brush. Wipe the areas clean with patches or a swab.
4. Using a small brush dipped in solvent, remove all deposits from around the breech of the barrel as well as all adjacent areas that have been subjected to powder or primer residue.
5. Clean the magazines with solvent and brush if needed.

B. Lubrication

After cleaning the entire gun, use a cloth to apply a light coating of high-quality gun oil to all interior and exterior metal surfaces and wipe clean. Manually cycle the action back and forth to check the function of the firearm. If any parts are damaged or badly worn or the firearm does not work correctly, the firearm should not be fired and should be returned to Kel-Tec for servicing immediately.

⚠️ WARNING Discharging a firearm with oil, grease, or any other material even partially obstructing the bore could result in serious injury, damage to your firearm, and death.

C. Troubleshooting

Proper functioning of your firearm is directly related to proper maintenance and care as well as the quality of ammunition you use. In the unlikely circumstance your P50 malfunctions, we have included a list of several suggested remedies below.

Failure to Fire (FTFR):

Also known as a dud or misfire. This occurs when the round feeds correctly in the chamber, the trigger is pulled, but the primer in the round is not discharged. Point the barrel of the P50 in a safe direction and engage the safety if possible. If the hammer is down, the safety will not engage. For either scenario, wait at least 1 minute before fully cycling the action and ejecting the round.

- Remove the magazine, eject the round and set aside. Load the magazine and proceed to fire as normal. Fire one round to see if the failure repeats. If it does not, fire a couple more, and if they are without failure the FTFR round that was set aside is a faulty round and should be DISPOSED OF PROPERLY. If the FTFR continues to occur with successive rounds then it is likely that a thorough cleaning is required to ensure proper contact between the hammer and the firing pin.

Failure to Feed (FTFD):

This type of failure occurs when the cartridge does not fully seat in the chamber.

- It is most like that the chamber, feed ramp, recoil spring and/or the magazine/spring need to be cleaned. Properly clean and lubricate the pistol.

Failure to Eject (FTEJ):

When an empty cartridge does not fully exit the pistol but leaves the chamber it is an FTEJ.

- Rotate the P50 and pull back the handle into the locked position. The cartridge should eject and a new round should enter the chamber. Proceed to fire and see if the problem repeats. If so, the chamber and bolt may need to be cleaned.

Failure to Extract (FTEX):

This failure occurs when the spent cartridge is not removed from the chamber.

- A faulty round could expand and get stuck in the chamber. The barrel could also be dirty and require cleaning. Additionally, check the extractor for visible damage and make sure that the spring is working.

In the case of malfunctions beyond the scope of the stated failures,

Contact Kel-Tec Service at: www.keltecweapons.com/contact

CUSTOMER SERVICE

I. SERVICE/ REPAIR



Always make sure the P50 is unloaded before sending it in for service.

If your P50 ever requires adjustment, refinishing or repair, it should be returned to Kel-Tec CNC Industries, Inc.'s service department. The unloaded firearm should be sent prepaid shipping charges to:

Kel-Tec CNC Industries, Inc.
ATTN: Service Department
1505 Cox Road
Cocoa, FL 32926

Contact your chosen carrier to determine its requirements for shipping firearms. In certain states, your firearm may have to be returned to you through a local, federally licensed firearms dealer. Be sure to securely package your firearm and insure it for its full value because Kel-Tec CNC Industries, Inc. is not responsible for firearms lost or damaged during shipment.

To ensure prompt service and handling, include a brief letter including your name, address, telephone number, the serial number of your P50, and what you would like to be done with it, or the issue that you would like addressed. No return authorization number is required. Once your firearm has been received, we will provide a quotation of all charges (unless the repairs are covered by the warranty) and will not begin work until we receive your approval. Charges for adjustments, refinishing, and repairs are payable by money order, Master Card, Visa or American Express. No COD or personal checks are accepted.

II. LIMITED LIFETIME WARRANTY

Subject to the terms, conditions and limitations outlined below, Kel-Tec CNC Industries, Inc. guarantees your P50 against defects in materials and workmanship for the lifetime of the original consumer purchaser.

To make a claim under this warranty, return your P50 pursuant to the instructions above and include a copy of a bill of sale in your name, or a copy of the 4473 form, showing that you are the original consumer purchaser. For repairs that are covered by the warranty, Kel-Tec CNC Industries, Inc. will pay the transportation and insurance charges to return your P50.

A. LIMITATIONS OF WARRANTY

The warranty will be void if any of the following occur:

(1) the instructions in the Instruction Manual are not followed;

(2) the P50 or any of its parts are altered or modified from their original state;

(3) damage is caused by misuse, abuse or improper maintenance; or

(4) the P50 is disassembled beyond the breakdown procedure listed in the Instruction Manual.

There are no warranties which extend beyond the description on the face hereof.

The sole and exclusive remedy pursuant to this warranty is the repair or replacement of the P50, at the sole discretion of Kel-Tec CNC Industries, Inc.

The implied warranties of merchantability and fitness for a particular purpose are expressly disclaimed.

All disclaimers and limitations of liability shall still apply even if the limited remedy of repair and replacement fails of its essential purpose.

In States where permitted, Kel-Tec CNC Industries, Inc. assumes no liability for incidental or consequential damage or for incidental expenses.

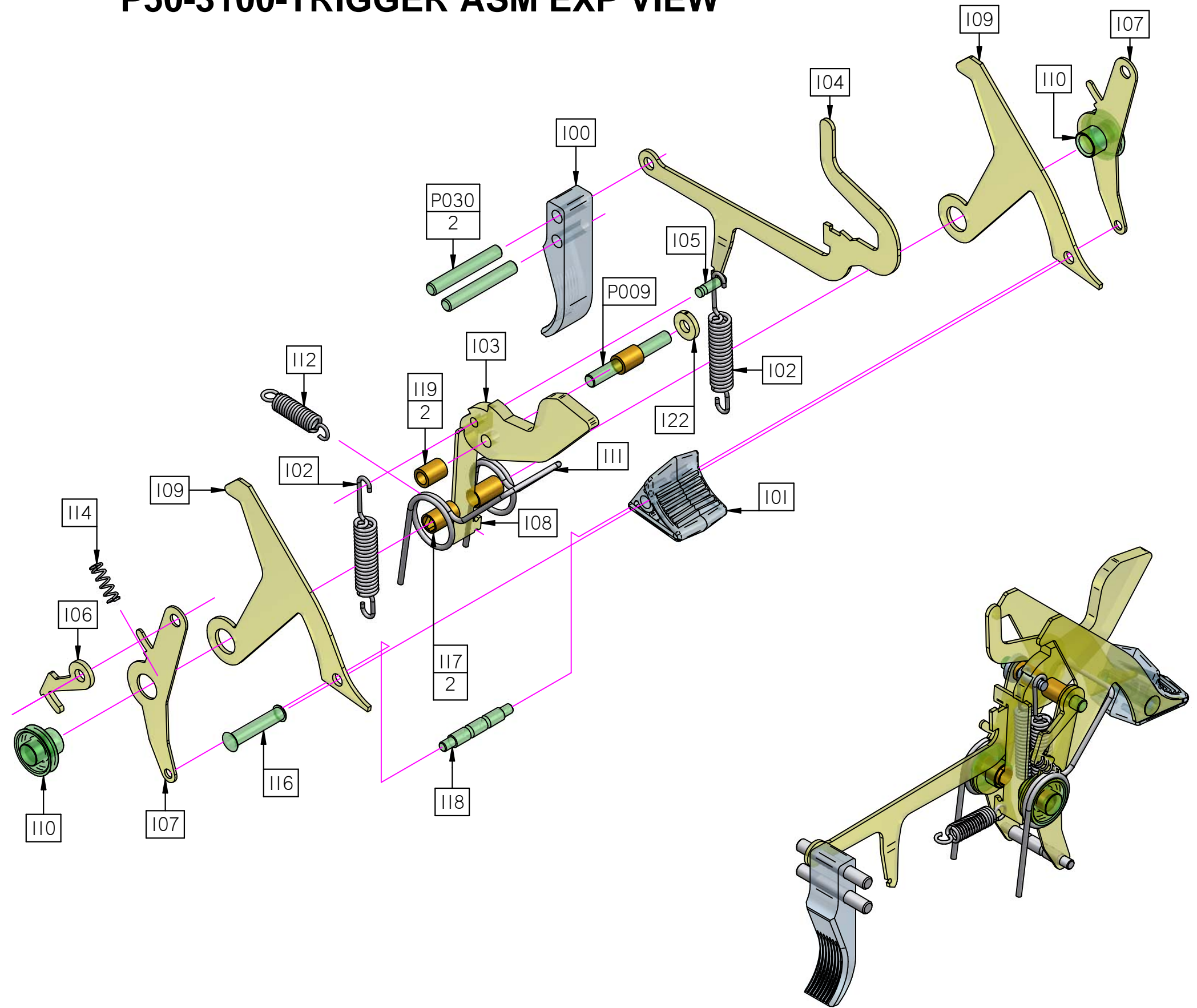
Any action against Kel-Tec CNC Industries, Inc. based on an alleged breach of this warranty must be brought within one (1) year of the claimed breach.

Kel-Tec CNC Industries, Inc.'s liability for breach of warranty shall be limited to repair or replacement of the P50, at the sole discretion of Kel-Tec CNC Industries, Inc.

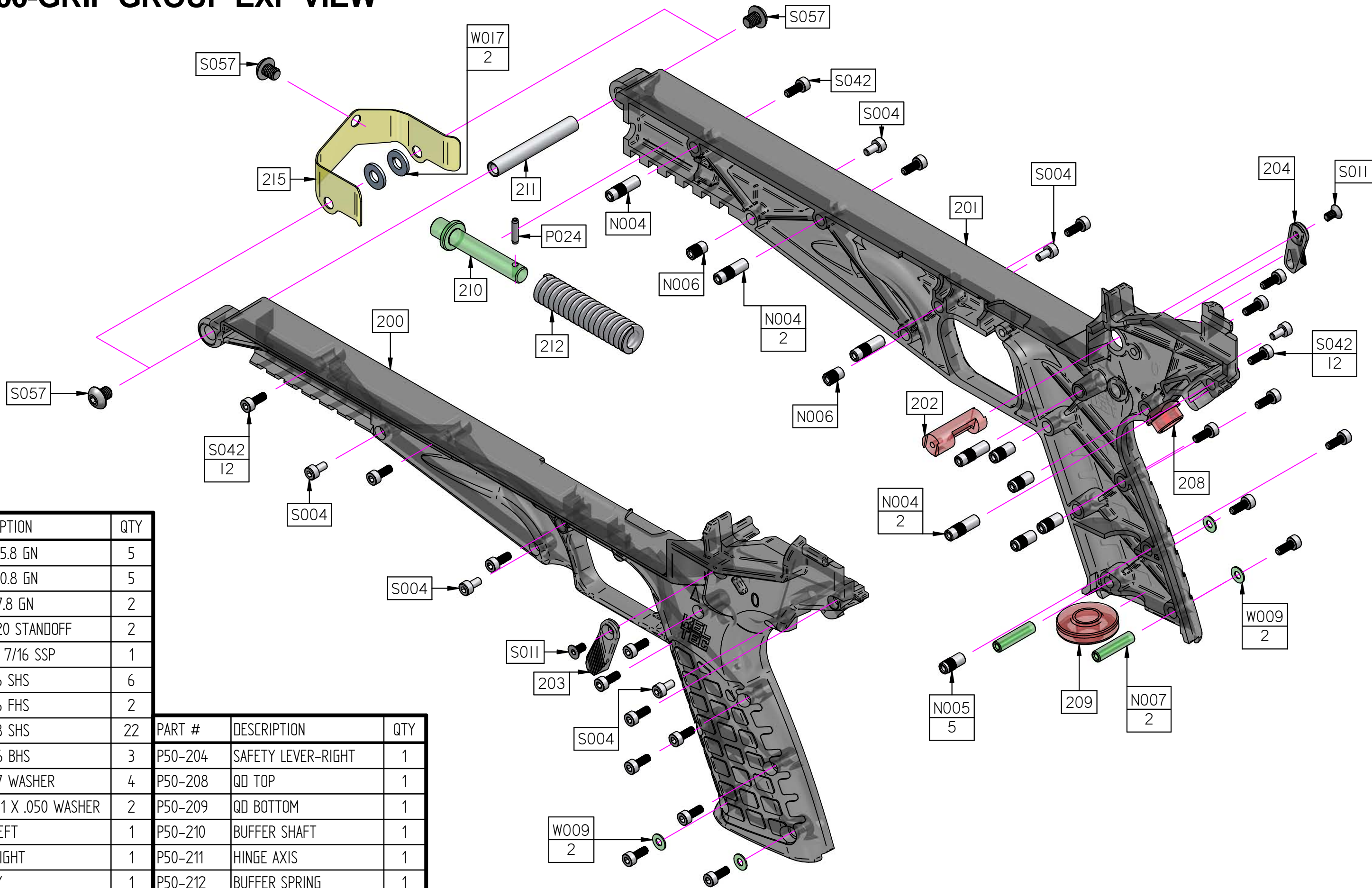
The purchaser assumes all liability resulting from unsafe handling or any action that constitutes a violation of any applicable laws or regulations. Kel-Tec will not be responsible for injuries or damages resulting from careless handling, unauthorized or unsafe adjustments or modifications, the use of non-standard, defective, or improper ammunition, the use of incompatible or improperly installed accessories, corrosion, neglect, fire damage, water damage, theft, abuse, ordinary wear and tear, or unreasonable use of the P50. Under no circumstances shall Kel-Tec be responsible for incidental or consequential damages with respect to economic loss or injury or property damage, whether as a result of breach of express or implied warranty, negligence or otherwise.

P50-3100-TRIGGER ASM EXP VIEW

PART #	DESCRIPTION	QTY
100	TRIGGER	1
101	ASSEMBLY BUTTON	1
102	HAMMER SPRING	2
103	HAMMER	1
104	TRIGGER BAR	1
105	HAMMER SPRING AXIS	1
106	SAFETY SNAP	1
107	SUPPORT PLATE	2
108	SEAR	1
109	RELEASE CATCH	2
110	RELEASE SPRING BUSHING	2
111	RELEASE SPRING	1
112	TRIGGER SPRING	1
114	SAFETY SNAP SPRING	1
116	RELEASE RIVET	1
117	SEAR BEARING	2
118	HAMMER SPRING PIN	1
119	HAMMER BUSHING	2
122	HAMMER AXIS WASHER	1
P009	1/8 X 1 DP	1
P030	1/8 X 7/8 DP	2



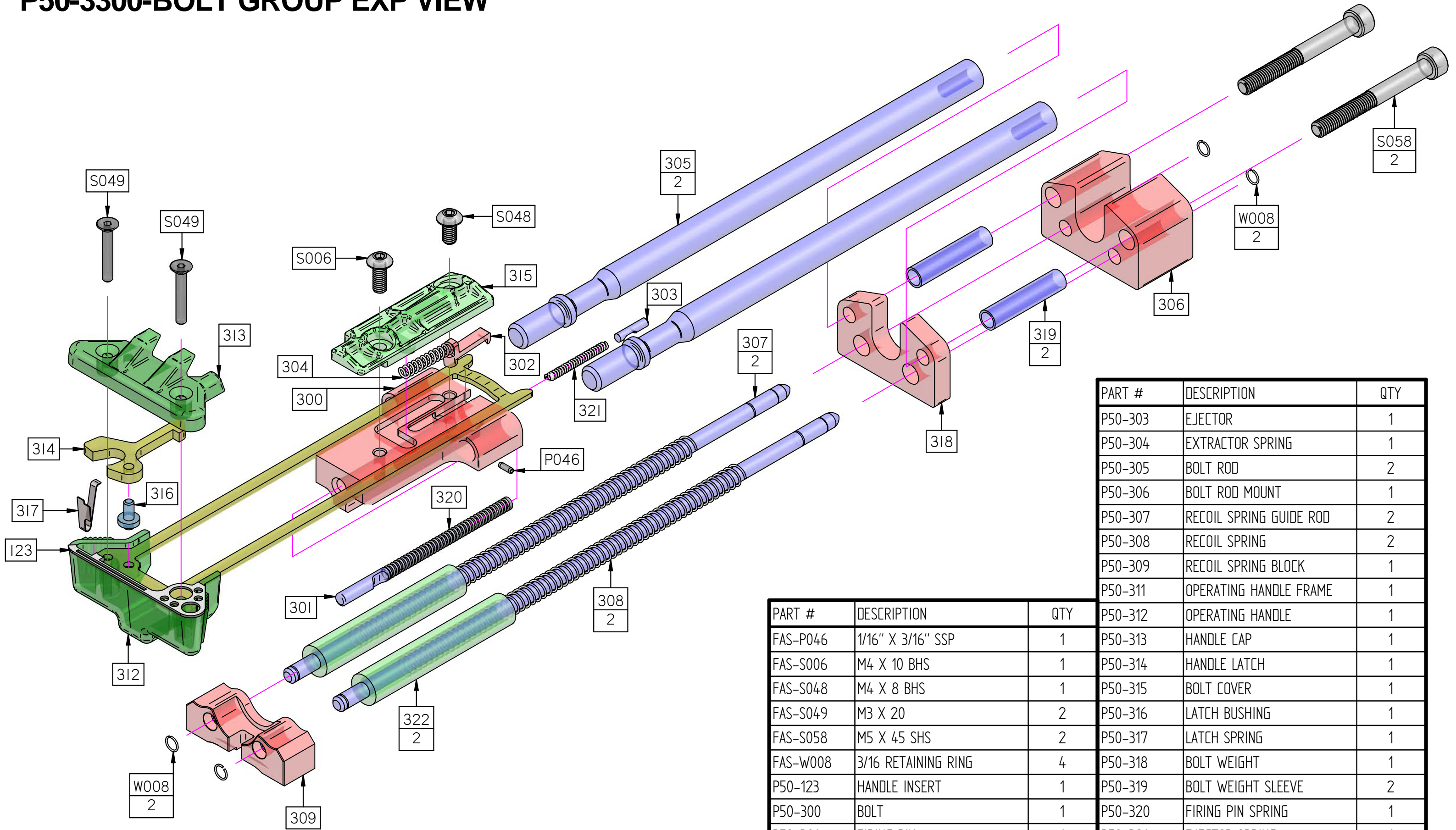
P50-3200-GRIP GROUP EXP VIEW



PART #	DESCRIPTION	QTY
FAS-N004	M3 X 15.8 GN	5
FAS-N005	M3 X 10.8 GN	5
FAS-N006	M3 X 7.8 GN	2
FAS-N007	M3 X 20 STANDOFF	2
FAS-P024	3/32 X 7/16 SSP	1
FAS-S004	M3 X 6 SHS	6
FAS-S011	M3 X 6 FHS	2
FAS-S042	M3 X 8 SHS	22
FAS-S057	M5 X 6 BHS	3
FAS-W009	M3 X 7 WASHER	4
FAS-W017	M5 X 11 X .050 WASHER	2
P50-200	GRIP LEFT	1
P50-201	GRIP RIGHT	1
P50-202	SAFETY	1
P50-203	SAFETY LEVER-LEFT	1

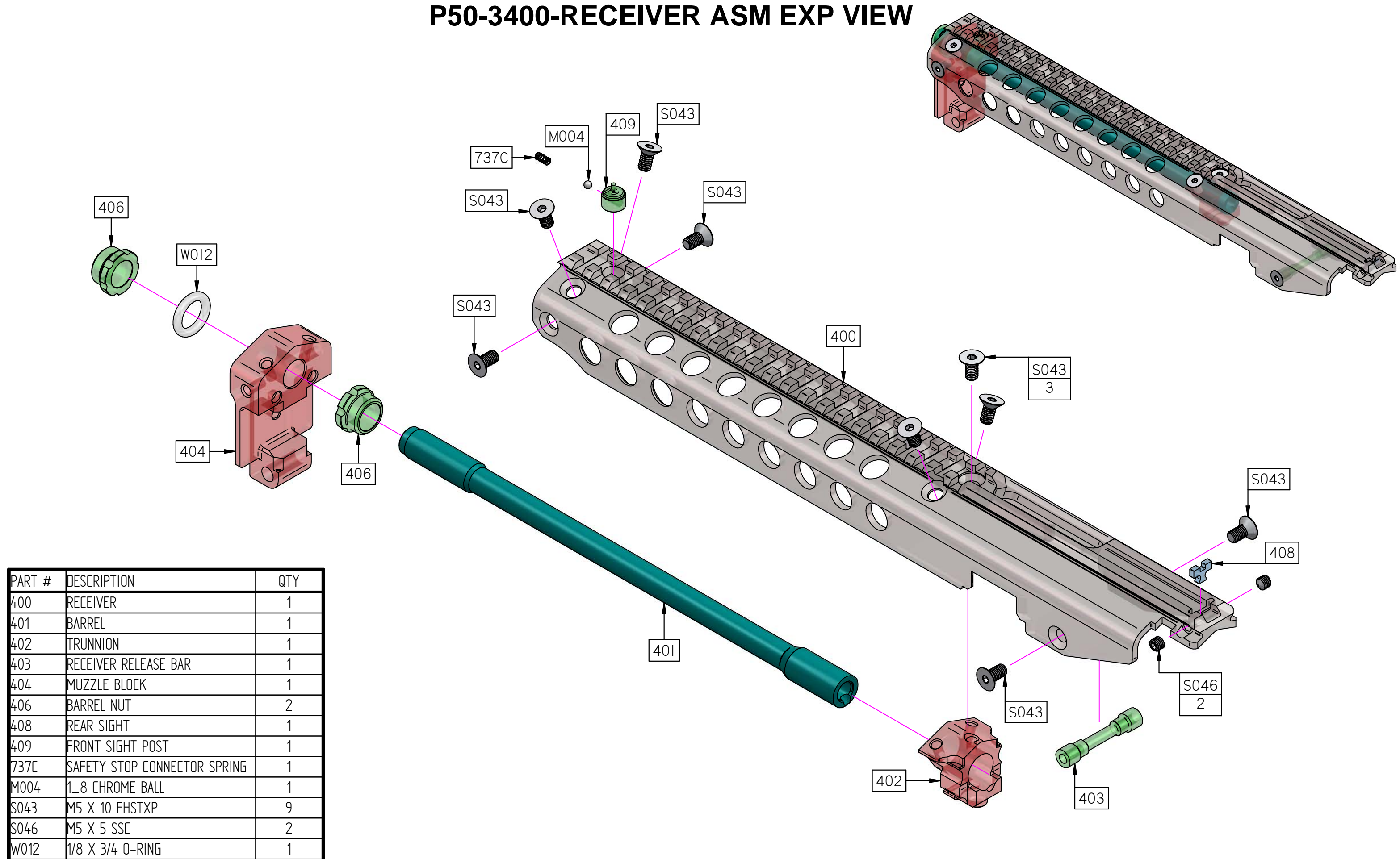
PART #	DESCRIPTION	QTY
P50-204	SAFETY LEVER-RIGHT	1
P50-208	QD TOP	1
P50-209	QD BOTTOM	1
P50-210	BUFFER SHAFT	1
P50-211	HINGE AXIS	1
P50-212	BUFFER SPRING	1
P50-215	MAG GUIDE	1

P50-3300-BOLT GROUP EXP VIEW



PART #	DESCRIPTION	QTY
P50-303	EJECTOR	1
P50-304	EXTRACTOR SPRING	1
P50-305	BOLT ROD	2
P50-306	BOLT ROD MOUNT	1
P50-307	RECOIL SPRING GUIDE ROD	2
P50-308	RECOIL SPRING	2
P50-309	RECOIL SPRING BLOCK	1
P50-311	OPERATING HANDLE FRAME	1
P50-312	OPERATING HANDLE	1
P50-313	HANDLE CAP	1
P50-314	HANDLE LATCH	1
P50-315	BOLT COVER	1
P50-316	LATCH BUSHING	1
P50-317	LATCH SPRING	1
P50-318	BOLT WEIGHT	1
P50-319	BOLT WEIGHT SLEEVE	2
P50-320	FIRING PIN SPRING	1
P50-321	EJECTOR SPRING	1
P50-322	BUFFER TUBE	2
FAS-P046	1/16" X 3/16" SSP	1
FAS-S006	M4 X 10 BHS	1
FAS-S048	M4 X 8 BHS	1
FAS-S049	M3 X 20	2
FAS-S058	M5 X 45 SHS	2
FAS-W008	3/16 RETAINING RING	4
P50-123	HANDLE INSERT	1
P50-300	BOLT	1
P50-301	FIRING PIN	1
P50-302	EXTRACTOR	1

P50-3400-RECEIVER ASM EXP VIEW



PART #	DESCRIPTION	QTY
400	RECEIVER	1
401	BARREL	1
402	TRUNNION	1
403	RECEIVER RELEASE BAR	1
404	MUZZLE BLOCK	1
406	BARREL NUT	2
408	REAR SIGHT	1
409	FRONT SIGHT POST	1
737C	SAFETY STOP CONNECTOR SPRING	1
M004	1.8 CHROME BALL	1
S043	M5 X 10 FHSTXP	9
S046	M5 X 5 SSC	2
W012	1/8 X 3/4 O-RING	1