

REVOLVER

USER'S MANUAL



WARNING: READ THE INSTRUCTIONS AND SAFETY PRECAUTIONS IN THIS MANUAL CAREFULLY BEFORE USING THE FIREARM.



ROCK ISLAND ARMORY

USER'S MANUAL REVOLVER

SAFETY, INSTRUCTION AND PARTS MANUAL



As a responsible owner of this firearm, you must read the instructions and warnings in this manual carefully. Before using this firearm, make sure you understand thoroughly the contents of this manual.

This manual must always be in the firearm's carrying case whenever the owner/user brings it or when it transfers ownership. A copy of this manual is available upon request from:

*ARMSCOR PRECISION INTERNATIONAL
150 N Smart Way, Pahrump NV 89060
E-mail: support@armscor.com*

TABLE OF CONTENTS

1	Statement of Liability	
1	State-By-State Warnings	
2	Safety Precautions	
HEALTH & SAFETY		
3	General Information & Mechanical Characteristics	
4	Tech Specs	
5	Basic Parts	
	<i>M200 REVOLVER</i>	5
	<i>M206A REVOLVER</i>	6
7	Exploded Views	
	<i>M200 REVOLVER</i>	7
	<i>M206A REVOLVER</i>	8
ABOUT THE FIREARM		
	Ammunition	9
	Operating Instructions	9
	Loading	9
	Firing	9
	Unloading	9
	Basic Disassembly & Reassembly	10
	Care & Maintenance	11
	Storage and Transportation	12
	Ordering Parts	13
	Warranty	14
	Notes	15
MAINTENANCE		



01 | STATEMENT OF LIABILITY

STATEMENT OF LIABILITY

This revolver is classified as a firearm or dangerous weapon. It is expressly understood that we assume no liability for its resale or unsafe handling under local laws and regulations. Armscor assumes no responsibility for physical injury or property damage resulting from either intentional or accidental discharge, or for the function of the firearm subjected to influence beyond their control. Armscor will honor no claims which may result from careless handling, unauthorized adjustments, defective or improper ammunition, corrosion or neglect. Examine your firearm carefully at the time of purchase. It should be forwarded immediately to the factory or its sales agent if any adjustment of any kind of required.

State-By-State Warnings



CALIFORNIA STATE WARNING

CHILDREN ARE ATTRACTED TO AND CAN OPERATE FIREARMS THAT CAN CAUSE SEVERE INJURIES OR DEATH. PREVENT CHILD ACCESS BY ALWAYS KEEPING FIREARMS LOCKED AWAY AND UNLOADED WHEN NOT IN USE. IF YOU KEEP A LOADED FIREARM WHERE A CHILD OBTAINS AND IMPROPERLY USES IT, YOU MAY BE FINED OR SENT TO PRISON. IT IS UNLAWFUL TO USE A MAGAZINE WITH A CAPACITY OVER 10 ROUNDS.



MASSACHUSETTS STATE WARNING

IT IS UNLAWFUL TO CARRY ANY MAGAZINE OR BELT WHICH HOLDS MORE THAN TEN ROUNDS, UNLESS AUTHORITY IS GRANTED BY THE BOSTON POLICE COMMISSIONER. IT IS UNLAWFUL TO STORE OR KEEP A FIREARM, RIFLE, SHOTGUN OR MACHINE GUN IN ANY PLACE UNLESS THAT WEAPON IS EQUIPPED WITH A TAMPER RESISTANT SAFETY DEVICE OR IS STORED OR KEPT IN A SECURELY LOCKED CONTAINER.



NEW YORK STATE WARNING

IT IS UNLAWFUL TO CARRY ANY MAGAZINE OR BELT WHICH HOLDS MORE THAN SEVEN ROUNDS, UNLESS AUTHORITY IS GRANTED BY THE STATE OF NEW YORK. THE USE OF A LOCKING DEVICE OR SAFETY LOCK IS ONLY ONE ASPECT OF RESPONSIBLE FIREARMS STORAGE FOR INCREASED SAFETY, FIREARMS SHOULD BE STORED UNLOADED AND LOCKED IN A LOCATION THAT IS BOTH SEPARATED FROM THEIR AMMUNITION AND INACCESSIBLE TO CHILDREN AND OTHER UNAUTHORIZED PERSONS.

02 | SAFETY PRECAUTIONS

Safety must be the first and constant consideration of every person who handles firearms and ammunition. The person with a firearm in his possession has an important responsibility. He/she must know how to use his/her firearm safely:

The M200/M206 REVOLVERS are one of the safest type handguns, as long as it is used correctly by a competent person. Following are basic safety precautions which the user must be thoroughly familiar with when handling the revolver.

1. Always keep the firearm holstered except when drawn for a definite purpose.
2. Always check the firearm for live ammunition when picked up, drawn from the holster, handed to, or received from another person.
3. Never point the firearm at anything you do not intend to shoot.
4. Never cock the hammer of the firearm unless you are ready to immediately shoot it. Do not even insert your finger in the trigger guard until you are ready to shoot.
5. Avoid dry firing even with dummy cartridges, unless the same is performed on a regular target range or at a known inanimate target.
6. When holding the firearm that is ready to fire, be absolutely certain that it is not pointed at any part of your body or at any person within your immediate vicinity.
7. Beware of obstructions in barrel. If, when firing, a weak or peculiar report is heard, cease firing and inspect the barrel for an obstruction. Remove magazine then check to insure there is no obstruction in barrel or chamber.
8. When a misfire or a "dud" is experienced keep the revolver pointed at the target for at least ten seconds before inspecting the firearm; a delayed firing may occur.
9. Open the cylinder and immediately eject all cartridges.
10. When possible, wear shooting glasses and hearing protectors when firing.
11. Do not shoot at a hard surface, or water for the bullet can glance off and travel in unpredictable directions with considerable velocity.
12. Avoid drinking alcoholic beverages when handling the firearm.

WARNING:

DO NOT ATTEMPT TO USE ANY FIREARM WITHOUT HAVING A COMPLETE UNDERSTANDING OF ITS PARTICULAR CHARACTERISTICS AND SAFE USE.

WARNING:

YOU SHOULD NEVER DEPEND ON A SAFETY MECHANISM OR ANY OTHER MECHANICAL DEVICE TO JUSTIFY CARELESS AND IMPROPER HANDLING.

WARNING:

THIS FIREARM WAS MANUFACTURED TO PERFORM PROPERLY WITH THE ORIGINAL PARTS AS DESIGNED. PLEASE MAKE SURE ANY PARTS YOU BUY ARE INSTALLED CORRECTLY AND THAT NEITHER REPLACEMENTS NOR ORIGINALS ARE ALTERED OR CHANGED. PUTTING A FIREARM TOGETHER INCORRECTLY OR WITH MODIFIED PARTS CAN RESULT IN DAMAGED FIREARM, DANGER, AND INJURY OR DEATH. ANY MODIFICATIONS TO FIREARM WILL VOID FACTORY WARRANTY.

GENERAL INFORMATION AND MECHANICAL CHARACTERISTICS

The M200/M206 REVOLVERS are Rock Island Armory's latest all-new version of a six-shot, swing out cylinder handgun specifically designed for police and military use. It comes as a result of an intensive design analysis for mechanical features, materials and modern manufacturing processes.

The gun features a simple but modern and reliable mechanical mechanism of high quality standards. It utilizes a spring-loaded, floating firing pin coupled with a transfer bar mounted on and controlled by the trigger. Only when the trigger is fully pulled does the transfer bar interpose itself between the firing pin and falling hammer, which allows the firing pin to contact the primer.

This type of system ensures greater safety and dependability, and makes it virtually impossible for any accidental discharge to occur even under abnormal circumstances or rough handling. The only time the gun will fire is when the trigger is fully pulled to the rear!

The hammer has wide spur-serrated thumbpiece for fast, positive non-slip cocking, and is activated by a coil spring which provides the needed energy for positive firing.

The M200/M206 REVOLVERS are made of high grade chrome moly steel on all action parts which are heat-treated for strength, durability and consistency over prolonged usage and repeated firing. These component parts are made utilizing the latest technology in precision investment casting, making many of the parts standard and interchangeable.

Other notable features of the gun are: well polished metal, parkerized finish; combat-type plastic grip; precision drilled, reamed and button rifled barrel; carefully machined cylinder made from aircraft high quality steel; crisp single shot action and smooth double action; quick and natural pointing ability that can be relied upon in any combat situation.

04 | TECH SPECS

Model	M200	M202	M206	M206WG
Caliber	38 Special			
Action	Double			
Magazine Capacity	6 Rounds			
Barrel	Half-Shroud	Bull	Full-Shroud	
Barrel Length	102mm. / 4in.		51mm. / 2in.	
Overall Height	223mm. / 8.75in.		174mm. / 6.88in.	171mm. / 6.75in.
Weight Empty (Approx.)	0.80kg. / 1.76lbs.	0.82kg. / 1.81lbs	0.72kg. / 1.59lbs	0.68kg. / 1.51lbs
Trigger Pull	5.25 – 5.90 kg. (11.50 - 13lbs.)			
Front Sight	Fixed Ramp			
Rear Sight	Fixed Wide Square Notch			
Rifling Twist	Right Hand Twist, 1 Turn in 400mm (16")			
No. of Grooves	6			
Stock	Combat Type Polymer Grip		Checked Wood Grip	
Finish	Parkerized			
Hammer	Wide Serrated Thumbpiece			
Trigger	Wide Finger Radius; Polished Sides			
Safety	Transfer Bar System			
Firing Pin	Floating			

Notes:
Specification is subject to change without prior notice.

05 | BASIC PARTS

M200 REVOLVER BASIC PARTS

PART NAME	PART NUMBER	PART NAME	PART NUMBER	PART NAME	PART NUMBER
*Barrel (M200)	20001	Ejector Rod Spring	20017	Hammer Pawl Plunger	20035
*Barrel (M202)	20201	Ejector Rod Head	20018	**Trigger	20036
*Barrel (M206/M206WG)	20601	Ejector Rod Head(M206/M206WG)	20618	Trigger Pivot Pin	20037
Barrel Pin	20001A	*Ejector Rod Guide	20019	Trigger Spring	20038
*Barrel Housing (M200)	20002	Ejector Alignment Pin	20020	Trigger Spring Rod	20039
*Barrel Housing (M202)	20202	*Firing Pin	20021	Trigger Spring Spacer Spring	20040
*Barrel Housing (M206/M206WG)	20602	*Firing Pin Bushing	20022	**Hand	20041
*Frame	20003	Firing Pin Bushing Retainer Pin	20023	Hand Pin	20042
*Cylinder	20004	*Firing Pin Spring	20024	Hand Rest Pin	20043
Cylinder Lock	20005	*Slide Plate	20025	**Transfer Bar	20044
Cylinder Lock Pin	20006	Latch Spring Stopper Pin	20025A	Transfer Bar Pin	20045
**Cylinder Stop	20007	Side Plate Screw	20026	*Transfer Bar Spring	20046
Cylinder Stop Pin	20008	**Hammer	20027	**Latch	20047
Cylinder Stop Spring	20009	Hammer Pivot Pin	20028	Latch Spring	20048
*Crane Link	20010	Hammer Spring	20029	Latch Bearing Pin	20049
Crane Lock Screw	20012	Hammer Spring Guide	20030	Grip	20050
Crane Lock Detent	20013	Compression Plate	20031	Grip Pin (M206WG)	20051
Crane Lock Spring	20014	**Hammer Pawl	20032	Grip Screw	20052
* Ejector	20015	Hammer Pawl Pin	20033	Nut	20053
Ejector Rod	20016	Hammer Pawl Spring	20034		

*Parts Not sold - repaired or fitted by factory only.
 **Parts that may be fitted by police armorers or competent gunsmith only

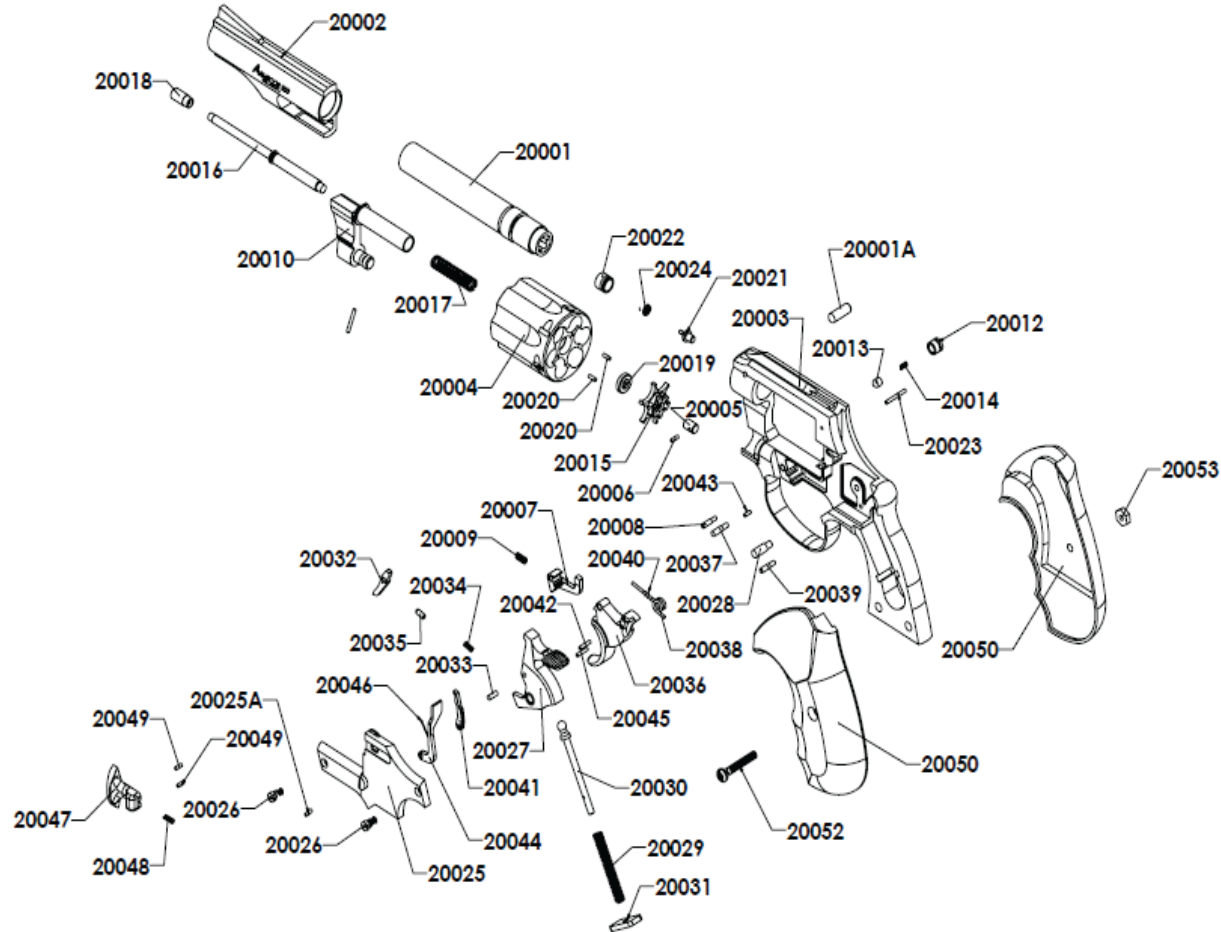
06 | BASIC PARTS

M206A REVOLVER BASIC PARTS

PART NAME	PART NUMBER	PART NAME	PART NUMBER	PART NAME	PART NUMBER
Barrel	20601	Firing Pin	20021	Trigger Spring Spacer Spring	20040
Barrel Pin	20001A	Firing Pin Bushing	20022	Hand	20041
Barrel Housing (With integrated front sight)	20602	Firing Pin Bushing Retainer Pin	20023	Hand Pin	20042
Frame	20003	Firing Pin Spring	20024	Hand Rest Pin	20043
Cylinder	20004	Side Plate	20025	Transfer Bar	20044
Cylinder Lock	20005	Latch Spring Stopper Pin	20025A	Transfer Bar Pin	20045
Cylinder Lock Pin	20006	Side Plate Screw	20026	Transfer Bar Spring	20046
Cylinder Stop	20007	Hammer	20027A	Latch	20047
Cylinder Stop Pin	20008	Hammer Pivot Pin	20028	Latch Spring	20048
Cylinder Stop Spring	20009	Hammer Spring	20029	Latch Bearing Pin	20049
Crane Link	20010	Hammer Spring Guide	20030	Grip (Left & Right)	20050
Crane Lock Screw	20012	Compression Plate	20031	Grip Screw	20052
Crane Lock Detent	20013	Hammer Pawl	20032	Grip Screw Nut	20053
Crane Lock Spring	20014	Hammer Pawl Pin	20033		
Ejector	20015	Hammer Pawl Spring	20034		
Ejector Rod	20016	Hammer Pawl Plunger	20035		
Ejector Rod Spring	20017	Trigger	20036		
Ejector Rod Head	20618	Trigger Pivot Pin	20037		
Ejector Rod Guide	20019	Trigger Spring	20038		
Ejector Alignment Pin	20020	Trigger Spring Rod	20039		

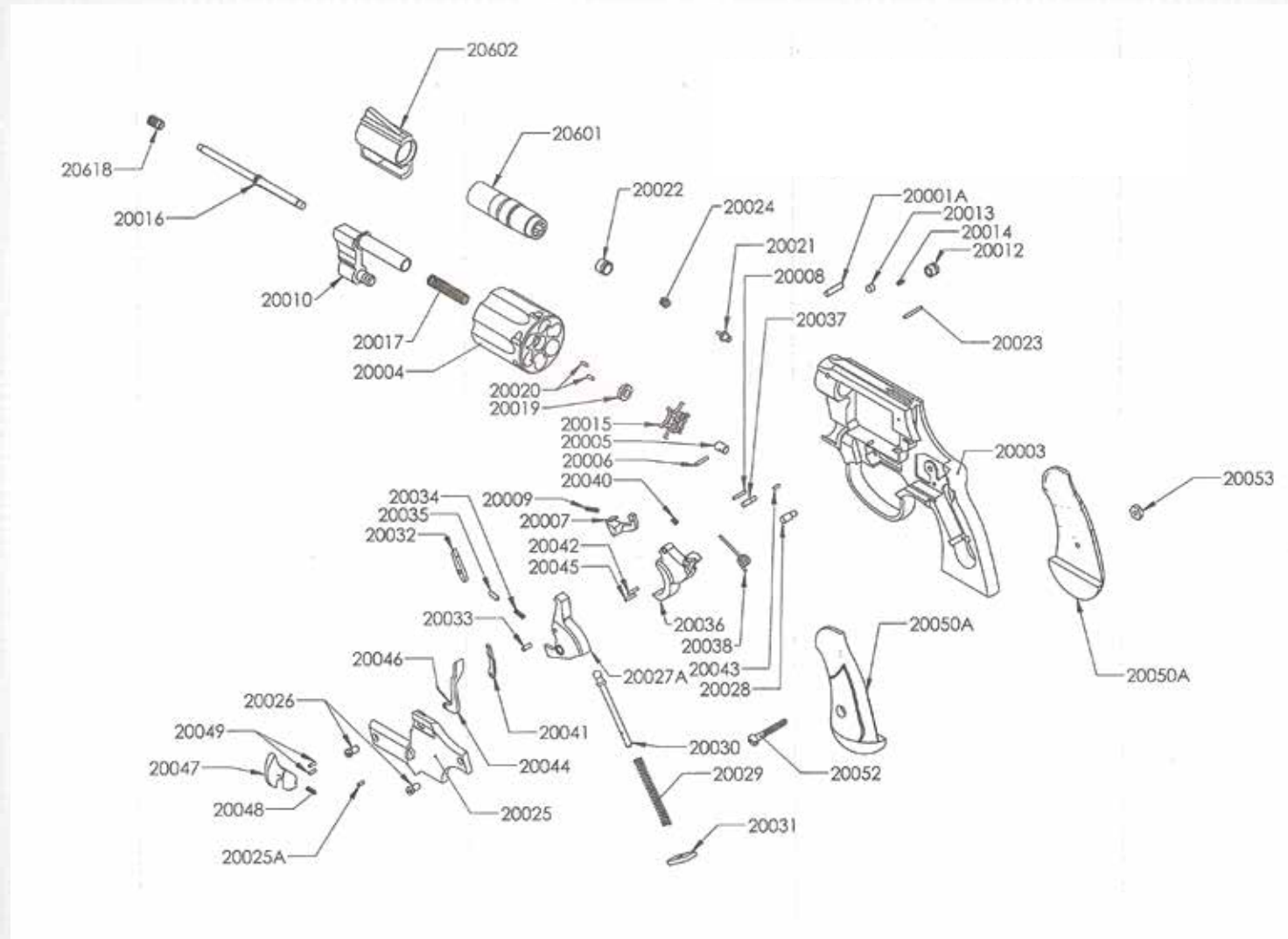
07 | EXPLODED VIEWS

M200 REVOLVER



08 | EXPLODED VIEWS

M206A REVOLVER



09 | MAINTENANCE

AMMUNITION



CAUTION:

NEVER USE CARTRIDGES OF UNKNOWN CALIBER, ORIGIN AND LOAD. IT IS EXTREMELY DANGEROUS TO USE A CARTRIDGE WHOSE PRESSURE IS GREATER THAN INDUSTRY STANDARDS, AS THE FIREARM MAY BE DAMAGED, AND MAY RESULT IN DEATH OR SERIOUS INJURY TO THE SHOOTER OR OTHER PERSON.

The M200 REVOLVER is chambered for Cal.38 Special cartridges manufactured in accordance with standard industry practice.

OPERATING INSTRUCTIONS



CAUTION:

THE M200 REVOLVER IS PACKED WITH LUBRICANT, IT IS A MUST TO FIRST REMOVE EXCESS OIL AND INSPECT THE GUN BEFORE USAGE. FIRING THE GUN WITH EXCESSIVE OIL, GREASE OR ANY OTHER LUBRICANT MAY RESULT TO SEVERE DAMAGE TO THE FIREARM AND INJURY TO THE SHOOTER AND THOSE NEARBY.



Loading is done by moving the latch rearward with the right thumb. This will release the cylinder so that it can be swung out to the left side for loading. With the muzzle pointing downwards, insert the cartridges into the cylinder chambers making certain the cartridges are firmly seated. Return the cylinder to its original position by retracting the latch again and swinging it back to the cylinder. Make sure that the latch returns, and the cylinder locks in alignment with the barrel bore. The revolver is now ready to fire.

LOADING



CAUTION: *THE CYLINDER SHOULD NOT BE SWUNG IN AND OUT OF THE FRAME WITH EXCESSIVE FORCE, AND NEVER BY WRIST ACTION.*

Loading is done by moving the latch rearward with the right thumb. This will release the cylinder so that it can be swung out to the left side for loading. With the muzzle pointing downwards, insert the cartridges into the cylinder



Single-action firing is commonly used for deliberate firing when there is enough time to sight the gun carefully and squeeze the trigger in an unhurried manner. It is accomplished by pulling the hammer to its extreme rearward position; the trigger will hold the hammer in place. The gun may then be fired by merely squeezing the trigger. Single-action shooting may also be employed in rapid firing, depending on the ability of the shooter to quickly pull the hammer, aim the gun and squeeze the trigger.

Double-action firing is used where the time or any other circumstance does not allow the shooter to fire in single action fashion. Shooting double-action is done by merely pointing the gun at the target and pulling the trigger rearward to its fullest extent. Release trigger to its forward most position to repeat process of double action firing.



To extract the fired or unfired cartridges, move the latch rearward and swing out the cylinder to its extreme outward position, point the gun upwards and press down the ejector rod head. This will eject the cartridges or fired shells from the cylinder chambers. The gun is now ready for reloading.

UNLOADING

10 | BASIC DISASSEMBLY & REASSEMBLY

DISASSEMBLY



CAUTION: *BEFORE STARTING DISASSEMBLY, CHECK TO ENSURE THAT THE CYLINDER CHAMBERS ARE FREE OF AMMUNITION.*

The cylinder-crane link assembly is removed by unscrewing the crane lock screw. Swing out the cylinder and draw forward out of the frame. With leather-padded pliers, unscrew the ejector rod head and remove the crane link out of cylinder. Further stripping of cylinder-ejector assembly is not recommended.

To disassemble the mechanism parts, remove grips and side plate screws and pry up the side plate gently and evenly, tapping the frame lightly to loosen it. Remove the transfer bar and hand from the pivot pins on the trigger. Cock the hammer and insert an opened paper clip through the cross hole of the hammer spring guide to trap the hammer spring. By releasing the hammer, the spring assembly is removed out of frame. pull the trigger to the rear and remove the hammer and trigger successively out of the frame cavity. Remove the cylinder lock out of its hole in the frame. To remove the cylinder stop, pivot it downward out of its slot in the frame and then lift it from its pivot pin. Further disassembly of the remaining parts (e.g. the firing pivot pin and hammer-plunger assemblies, barrel and pivot pins as attached to the frame) is not recommended. This should only be performed at the factory or by a qualified gunsmith.

REASSEMBLY

Reassembly is done in the reverse order of disassembly. In attaching the side plate, push the cylinder lock fitted to frame all the way forward. Hold the side plate while depressing the latch until it is even with the edge of the frame. Then, engage its lock lid to its slot in the frame and push the side plate gently inward to its final position. In doing this, make sure that the cylinder lock pin enters its clearance slot on the latch and the transfer bar and hand do not come off free of their pivot pins on the trigger. **RE-CHECK THE GUN FOR PROPER FUNCTIONING BEFORE LOADING LIVE AMMUNITION.**

11 | MAINTENANCE

CARE AND MAINTENANCE

With proper care, your REVOLVER will provide you with years of dependable service.

CLEANING

For the revolver to function safely and reliably, it is essential to keep it always in good condition by making it free of rust, dirt, grease and firing residues. It is important to clean and lubricate the gun to avoid rusting of metal parts after firing and before storing. Doing the job requires no disassembly of mechanism parts. Under normal cleaning purposes, removal of the cylinder-crane link assembly is sufficient.

To clean the revolver when not fired or after prolonged storage, rub the external parts with a slightly oiled rug and then swab out the bore and cylinder chamber with a flannel patch. Remove excess oil but leave a slight film to protect the metal from rusting. Clean all crevices with a nylon or brass. **DO NOT OVER LUBRICATE.**

To clean the revolver after firing, scrub the bore and the cylinder with gun cleaning solvent (preferably nitro solvent), and then use a brush dipped in solvent, to remove the powder and primer residues. Areas to be cleaned are from around the breech of the cylinder, ejector, barrel bore and other adjacent areas which have been subjected to the residue. If there are head residues or foreign matters left inside the barrel or chambers, scrub these parts further with brass brush dipped in powder solvent. After cleaning the gun with solvent, remove all traces of the solvent and apply a light film of oil immediately thereafter. It is normal to find residues in the barrel and cylinder within 24 hours to 48 hours after initial cleaning. These can be removed with bristle brush and a slight re-application of solvent, after which slight oil should be re-applied on all surface.

When storing the gun for prolonged period of time, the gun's locking mechanism should be oiled heavily with an acid-free lubricant. The external parts must be heavily coated with an anti-rust oil or grease to prevent moisture from seeping into the internal mechanism and settling on the external surface. Linseed oil should be applied to wooden grips to prevent cracking. **CAUTION** should be exercised in doing this so as not to affect the moving mechanisms, linseed oil becomes sticky when dry. Before using a revolver that has been stored for a prolonged period of time, the revolver must always be cleaned first as discussed above.



CAUTION:

NEVER STORE THE REVOLVER WITH A PLUG IN THE BARREL THIS WILL CONTRIBUTE TO ACCUMULATION OF MOISTURE. THE GUN SHOULD BE RE-STORED IN ROOMS WITH DRY ATMOSPHERE AND WITH THE LEAST HUMIDITY. IT SHOULD NOT BE STORED ENCASED IN LEATHER OR ANYTHING THAT WILL ATTRACT AND HOLD MOISTURE, CAUSING IT TO RUST.



SCAN QR

SEE FULL VIDEO TUTORIALS ON OUR
WEBSITE

STORAGE AND TRANSPORTATION

When storing the firearm and ammunition, store in separate locations, store ammo in a cool, dry location.

When storing the gun for a prolonged period of time, It is necessary to oil it heavily with an acid-free lubricant. The external parts must be coated with an anti-rust oil or grease to prevent moisture causing the parts to rust and malfunction. Before usage, the revolver must be cleaned and wiped dry again as discussed previously.

WARNING:

CHILDREN ARE ATTRACTED TO AND CAN OPERATE FIREARMS THAT CAN CAUSE SEVERE INJURIES OR DEATH. PREVENT CHILD ACCESS BY ALWAYS KEEPING FIREARMS LOCKED AWAY AND UNLOADED WHEN NOT IN USE. IF YOU KEEP A LOADED FIREARM WHERE A CHILD OBTAINS AND IMPROPERLY USES IT, YOU MAY BE FINED OR SENT TO PRISON.

WARNING:

THE FIREARM SHOULD BE RE-STORED IN ROOMS WITH A DRY ATMOSPHERE AND WITH THE LEAST HUMIDITY. IT SHOULD NOT BE STORED ENCASED IN LEATHER OR ANYTHING THAT WILL ATTRACT AND HOLD MOISTURE, CAUSING IT TO RUST.

ORDERING PARTS

Visit RIA website to browse, learn more about and purchase parts and ammunition for all of your Rock Island Armory products.

 www.advancedtactical.com



WARRANTY REGISTRATION

Armcor's warranty covers its firearms and parts. We offer limited lifetime warranty on our products for their intended purpose. As with any product, abuse, gunsmithing by an unqualified person and normal wear and tear are excluded. Additionally, if the firearm was modified and/or repaired by an unqualified gunsmith without permission from Armcor, then the warranty will be void. If warranty work should be required, return the firearm to the address listed below. There is no refund for the shipping cost. Gunsmithing services are available by registered Armcor Gunsmithers. Please email the address below.

To register your firearm, please go to www.rockislandarmory.com/support-center/warranty/ and complete online warranty form. In comments section, write warranty registration and press submit. You can also go to www.rockislandarmory.com and press warranty section at the bottom.

For more information on warranty, visit www.rockislandarmory.com, or email support@armcor.com

Armcor Precision International
150 North Smart Way
Pahrump, NV 89060
Email: support@armcor.com

IMPORTANT WARRANTY INFORMATION

Our Rock Island Armory revolvers are warranted to function only with Factory FMJ Brass Cased Ammo and the Original Factory Magazine. Use of Handloads is not covered in Warranty of Repair for the function of the Firearm.

DUE TO THE FIT AND TIGHTNESS OF FIREARM, RIA RECOMMENDS A BREAK-IN PERIOD OF 500 ROUNDS.

THIS IS HOW YOU VOID YOUR WARRANTY

- * Refinishing your RIA firearm
- * Misuse, Mishandling, Dropping your RIA Firearm
- * Firing Remanufactured or Reloaded Ammunition
- * Not properly reassembling your RIA Firearm resulting in damage, ie reverse plugs!
- * Any addition of after market parts
- * Unauthorized repairs done by any other than Rock Island Armory

LIMITS ON WARRANTY (will not cover)

- * Finish, Holster wear, Scratches, Chemical damage
- * After Market Magazines
- * Damage to Factory Magazines
- * Sights not installed by Rock Island Armory
- * Recoil Springs

WE RESERVE THE RIGHT TO CHARGE FOR LABOR, PARTS AND SHIPPING TO RETURN YOUR RIA FIREARM BACK TO FACTORY SPECIFICATIONS IF IT HAS BEEN ALTERED.

NOTES



WWW.ROCKISLANDARMORY.COM

