



# PT 92

INSTRUCTION MANUAL

## GENERAL SAFETY, OPERATING INSTRUCTIONS

### READ CAREFULLY BEFORE USING YOUR FIREARM

**Important:** Keep this manual with your firearm.

The information contained in this manual is useful, both for beginners and experienced shooters. In addition to important information about the function, cleaning, and care of the firearm, the manual contains instructions that will be very helpful in shooting. **The most important rule of safe firearm handling is always keep the muzzle pointed in a safe direction.**



# PT 92

[TaurusUSA.com](http://TaurusUSA.com)

[f /TaurusUSA](https://www.facebook.com/TaurusUSA)

[@taurususa](https://twitter.com/taurususa)

[i /TaurusUSA](https://www.instagram.com/TaurusUSA)

- 9mm Luger
- Finish: Matte black or matte stainless
- Integrated front/drift adjustable rear
- DA/SA trigger
- Manual safety / decocker

# CONTENTS

Firearms Safety .....	6
Get To Know Your Pistol.....	14
Ammunition .....	18
Operating Instructions.....	22
Disassembly .....	26
Assembly .....	30
Care and Maintenance.....	31
Exploded View.....	32
Taurus® Service .....	34
Limited Warranty .....	36



## WARNING

The safety warnings in this booklet are important. By understanding the dangers inherent in the use of any firearm, and by taking the precautions described herein, you can safely enjoy your Taurus® firearm. Failure to follow any of these warnings may result in serious injury to you or others, as well as severe damage to the firearm or other property.

## NOTES




---

---

---

---

### SIGNAL WORDS AS DEFINED BY ANSI Z535.6 AND Z535.4 STANDARDS.

 <b>DANGER</b>	DANGER indicates a hazardous situation which, if not avoided, will result in death or serious injury.
 <b>WARNING</b>	WARNING indicates a hazardous situation which, if not avoided, could result in death or serious injury.
 <b>CAUTION</b>	CAUTION indicates a hazardous situation which, if not avoided, could result in minor or moderate injury.
<b>NOTICE</b>	NOTICE is used to address practices not related to physical injury.

*Intentionally left blank*

## FIREARMS SAFETY

### WARNING

When a firearm discharges, the bullet or shot can strike a person, resulting in death or serious bodily injury.

The three basic keys to safe handling of firearms:

- 1. KEEP YOUR FINGER OFF THE TRIGGER UNTIL YOU ARE READY TO FIRE.** If you maintain good trigger discipline, it is extremely unlikely the firearm will fire.
- 2. KEEP THE MUZZLE POINTED IN A SAFE DIRECTION.** Even if the firearm discharges, if the muzzle is pointed in a safe direction, no one will be injured.
- 3. NEVER TRUST ANY SAFETY MECHANISM.** If you adopt the attitude that you will not trust any safety mechanism, you will be vigilant about keeping your finger off the trigger and keeping the muzzle pointed in a safe direction.

### WARNING - KNOW YOUR TARGET

Never fire at targets at close range. Ricochets can and do cause death or serious bodily injury. What constitutes “close range” depends on many factors including target material, bullet caliber and angle of impact.

**KNOW WHAT IS BEHIND YOUR TARGET.** Unless you are shooting into a bullet trap designed to capture the type of ammunition you are firing, projectiles may pass through the target and strike anyone or anything beyond. Bullets can travel miles.

**ALWAYS WEAR HEARING PROTECTION.** Firearms are loud. The sound they generate is greater indoors. Repeated exposure to loud noises can cause deafness. Hearing protection is rated by decibel reduction. Look for “dB” reduction of 30 or more when purchasing ear protection. Modern ear protection can allow normal hearing until the sound from the discharge reaches the ear. Layering hearing protection, for example, wearing 30db rated foam plugs with 20db rated ear muffs, significant protection can be achieved.

**ALWAYS WEAR EYE PROTECTION.** In normal operation, firearms emit hot high-velocity gases, particles and metal. These materials flying into your eye can cause blindness. Protect your vision with proper eye protection. Any eye protection may be better than none, but look for ANSI Z87.1-2003 certified eyewear for the best protection.

**NEVER HANDLE FIREARMS WHILE UNDER THE INFLUENCE OF DRUGS OR ALCOHOL.** Firearms are dangerous. Handling firearms while impaired by drugs or alcohol is foolhardy and may result in serious injury or death. This warning includes prescription drugs that contain a warning about using machinery or driving while taking the medication.

**MODIFIED FIREARMS ARE DANGEROUS, AND USE CAN RESULT IN SERIOUS INJURY OR DEATH.** “Trigger jobs,” polishing original components or installing aftermarket parts can cause a firearm to function in ways different than intended. Some such work may also be illegal.

**DAMAGED FIREARMS ARE DANGEROUS, AND USE CAN RESULT IN SERIOUS INJURY OR DEATH.** Repairs should always be made by a qualified gunsmith or by a factory-authorized repair site. Work done by those unfamiliar with the design can cause a firearm to function in ways different than intended.

**NEVER ATTEMPT TO DISASSEMBLE OR CLEAN A LOADED FIREARM. DOING SO CAN RESULT IN SERIOUS BODILY INJURY OR DEATH.** How often have we heard “But it went off while I was cleaning it!” or, “I did not know it was loaded!” or, “It was jammed, and I tried to take it apart!”?

**IF A FIREARM GOES OFF, THERE WAS A ROUND OF AMMUNITION IN THE CHAMBER.** Period. “Clear” (or empty) the firearm of all ammunition before disassembling or cleaning.

## FIREARMS SAFETY SYSTEMS

Firearms safety is supported by a system. With your pistol, the system is made up of the following:

**1. You!** Your involvement in safety cannot be overemphasized. No safety component can keep your finger off the trigger and the muzzle pointed in a safe direction. Also, you are the key to never trusting any of the mechanical parts of the safety system.

**2. Manual Safety Lever.** To operate the manual safety, push the manual safety lever up. Manual safety must be all the way in the safe position to work properly, not halfway or at some other point in its travel. Don't play with the manual safety and you will avoid accidents.

**3. Trigger Guard.** This is a physical obstruction that helps prevent unintended pressing of the trigger or trigger safety. Do not modify the trigger guard.

**4. Firing Pin Block.** The firing pin block's purpose is to prevent the gun from firing in the event the firearm was accidentally dropped in certain orientations. The Firing Pin Block interferes with the forward travel of the firing pin until the trigger is pulled. Once you are ready to fire, pressing the trigger moves this safety component from its "safe" (blocking) position to its "fire" (free) position.

**5. This Manual.** Taurus intends for you to use this manual to learn about your pistol and to help you use your pistol safely. If you use the manual, you will go a long way toward being a knowledgeable and safe firearms owner.

**6. On Line Resources.** TaurusUSA.com hosts a library of videos concerning safety and related issues. This library is being added to and revised. Please visit the site and take advantage of what is available there as part of your education regarding using your Taurus pistol in a safe fashion.

## PISTOL AND REVOLVER SIZE AND SAFETY

The selection of a revolver versus a pistol as well as the size, caliber and magazine capacity of a handgun are personal choices. There are many choices to be made, and there are advantages and disadvantages for each. When selecting a pistol, size has safety implications because of the way pistols are loaded.

Generally speaking, smaller handguns may require more attention to be handled safely than medium or full-size handguns. This is because their small size makes it easier to point the muzzle at your hand or to “sweep” (swing the muzzle across your body) yourself or others in ordinary handling.

With the PT 22 model pistols, we recommend loading using the tip-up barrel feature to place a round in the chamber. With this feature, it is not necessary to manipulate the slide at all. This is the safest procedure when chambering a round in the PT 22 model pistols.

## SAFE CARRY CONDITION

“Safe Carry Condition” is the most ready-to-fire condition that the user feels is reasonable under the circumstances. Generally, we believe that Taurus® pistols should be carried with a full magazine and an empty chamber. Under most circumstances, this provides the best balance of readiness and safety. On the plus side, if the chamber is empty, unintended discharges are minimized. However, the slide must be manipulated to load a round in the chamber. In emergency circumstances, this can be difficult to do safely and correctly.

If the user believes that he or she is faced with an increased threat, chambering a round is appropriate. For safety reasons, this should be done beforehand with the muzzle pointed in a safe direction, and your finger off the trigger. How do you know you may be going into a more dangerous situation? That depends. If, for example, you carry cash to deposit after a business closing, this may well qualify. If a domestic partner is actively threatening you, this may qualify as well.

“Safe Carry Condition” is a judgment call and must be made by the user. Some users routinely face greater threats than others. Users must be aware of their situation and circumstances. Errors in judgment can have dire and tragic outcomes if firearms are present.

## CARRYING FIREARMS

Carrying a firearm can be dangerous. Carrying a firearm makes it more difficult to control the muzzle and makes it more likely that the firearm can be dropped or bumped causing the firearm to fire.

In almost all circumstances, it is safest to carry a handgun in a holster designed for that specific handgun. Carrying a handgun in a pocket without a specific designed In-Pocket Holster or a trigger shield or in a waist band without a belt clip is always a last choice. Carrying any handgun in a holster that fits the firearm and style of carry should prevent it from accidentally falling and you from losing control of the muzzle.

Except in rare high-threat circumstances, carry your pistol with a full magazine and an empty chamber. If the chamber is empty, the pistol cannot fire.



### WARNING - CARRYING

Do not carry your firearm in any way that might let it fall or be bumped. If a firearm falls or is bumped, it may fire.



### WARNING - CARRYING

Always review and follow the holster or luggage manufacturer's instructions or the firearm may fall or be bumped and fire.

## FIREARMS STORAGE AND GUN LOCKS

How you secure your firearms is a personal choice based on the unique circumstances in your home, business or vehicle and the laws of the state where your firearm is located. Any choice you make about securing your firearms will present advantages and disadvantages. It is up to you to weigh those advantages and disadvantages and choose which security method is best for you and those around you.



### WARNING - LOCKING

Never lock a firearm with a round of ammunition in the chamber. Unlocking a loaded firearm makes it more difficult to maintain trigger discipline and to keep the muzzle pointed in a safe direction.



### WARNING

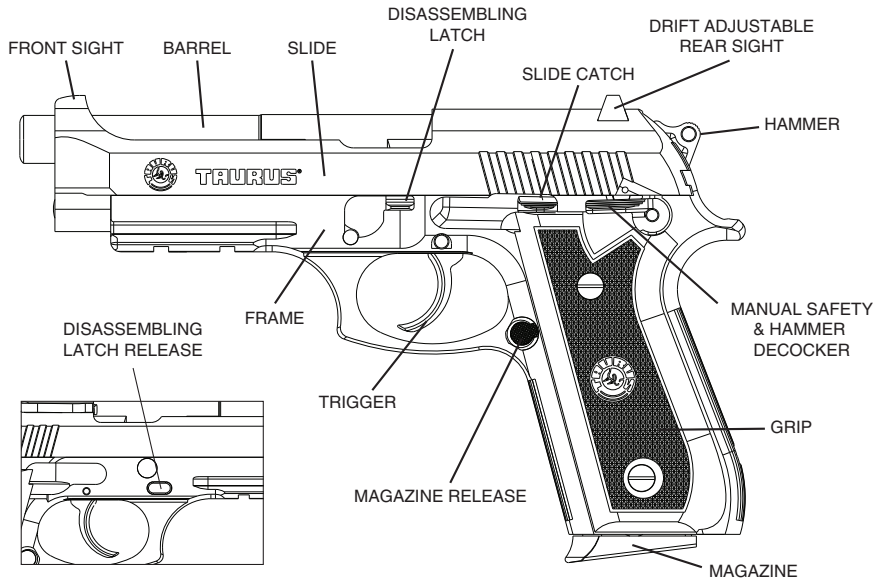
Securing your firearm may inhibit access in a defensive situation and may result in injury or death.



### WARNING

Failure to secure a firearm may result in injury or death. Properly securing a firearm means storing your firearm unloaded, decocked and securely locked, with all ammunition in a separate location.

## GET TO KNOW YOUR PISTOL



## SPECIFICATIONS

<b>Model</b>	<b>PT 92</b>
<b>Caliber</b>	9mm Luger
<b>Action</b>	DA / SA
<b>Capacity</b>	17+1 Rounds
<b>Barrel Length</b>	5"
<b>Overall Length</b>	8.5"
<b>Overall Height</b>	5.5"
<b>Overall Width</b>	1.6"
<b>Weight</b>	34 oz.
<b>Sights (Front)</b>	Integrated
<b>Sights (Rear)</b>	Drift Adjustable
<b>Materials</b>	Slide: Alloy Steel or Stainless Steel Barrel: Stainless Steel Grip: Polymer
<b>Safety Device</b>	Ambidextrous Manual Safety / Decocker



## LOCKING DEVICE INSTALLATION INSTRUCTIONS



### WARNING - LOCKING DEVICES

- Always keep your firearm pointed in a safe direction, including when you are installing or removing your locking device.
- Always verify that your firearm is completely unloaded (see page 28) before installing your locking device.
- Do not install locking devices in the trigger guard; always keep your fingers and locking device outside the trigger guard during device installation and removal.
- Store firearms, ammunition and keys separately and securely, away from children and careless adults; do not store your firearm with the keys in the locking device.
- Do not attempt to work the action of your firearm with the locking device in place; this may damage your firearm.
- While locking devices are an important aid to security measures, they are not a substitute for safe firearm handling and proper storage. Remember that any mechanical device can be bypassed with enough time, knowledge, determination and equipment.

LOCKING DEVICES MUST BE USED SAFELY AND RESPONSIBLY

### It is important to use the locking device on your Taurus firearm!

Keep the muzzle pointed in a safe direction and your fingers outside the trigger guard at all times during installation of the locking device!

#### To Install the Factory-Supplied Locking Device:

1. Remove the magazine from your pistol.
2. Open the action completely, and verify that the firearm is completely unloaded and contains no cartridges or cartridge cases! Use the slide stop to keep the action open during installation of the locking device.
3. Insert the cable directly in your pistol as shown in Figure 1.
4. To lock: With the key turned to the farthest clockwise position, insert the loose end of the cable into the lock. Turn the key counterclockwise and remove the key.
5. Once the lock is securely closed, pull firmly on the lock to test the connection and be sure it is locked. Do not leave or store your firearm with the key in the lock! Store your locked, unloaded firearm and the key in secure, separate locations, away from ammunition, children, and careless adults.



### WARNING

Never leave your keys in the lock when the lock is installed on the firearm.

## AMMUNITION

### **WARNING**

Using the wrong ammunition in your pistol can result in serious bodily injury and damage to your pistol. Make certain the ammunition you load in the magazine is the same caliber as is marked on the pistol.

### **WARNING - AMMUNITION AND INDUSTRY STANDARDS**

Use only clean, dry factory-loaded ammunition. Old, damaged, wet or oily ammunition may fire at pressures higher than industry standard, causing injury to you and bystanders or damage to your pistol.

Do not use reloaded ammunition in your pistol. Its firing pressures are unknown and may well exceed industry standard, causing injury to you and bystanders or damage to your pistol.

Odd sounds are signs of trouble. If a round “does not sound right” when it goes off, stop firing right away. A bullet may be stuck in the barrel. Firing the pistol in this condition may cause pressures higher than industry standard, causing injury to you and bystanders or damage to your pistol.

If you hear any odd sounds when firing your pistol, stop firing, clear the pistol and “field strip” (or disassemble) the pistol in accordance with the procedures listed in this manual. Once the barrel is removed from the slide, look down the bore. If you do not see light, there is something stuck in the bore. Do not fire the pistol again, and take the pistol to a qualified gunsmith or contact the Taurus Service Department at 800-327-3776.

### **WARNING - LEAD AND HAZARDOUS CHEMICAL EXPOSURE**

Discharging firearms in poorly ventilated areas, handling, and/or cleaning firearms or handling ammunition can expose you to chemicals including lead which is known to the state of California to cause cancer and birth defects or other reproductive harm. For more information, go to [www.P65Warnings.ca.gov](http://www.P65Warnings.ca.gov)

Have adequate ventilation at all times. Wash hands thoroughly after exposure with soap and water.

**SHOOTING OR CLEANING GUNS MAY EXPOSE YOU TO LEAD**

### **WARNING**

“+P” ammunition can be dangerous. There is a detailed discussion about “+P” and “+P+” ammunition on page 20 of this manual. Until you have read that information, do not fire any ammunition marked “+P” in your pistol.

### **WARNING**

Never fire ammunition marked “+P+” in your pistol. It does not comply with industry standards as to chamber pressures.

### **WARNING**

It is DANGEROUS to fire “+P+” ammunition in any Taurus® firearm, and doing so may result in serious bodily injury or death. The Sporting Arms and Ammunition Manufacturers Institute (SAAMI) does not recognize any “+P+” ammunition at all. These loads operate at unknown pressures.

There are only four calibers that can carry a “+P” rating from SAAMI. They are 38 Special +P, 9mm Luger +P, 38 Super Automatic +P and 45 Automatic +P. There are no other SAAMI approved “+P” loads. Any ammunition in any other caliber marked “+P” is not SAAMI compliant, may be dangerous and should not be used.

Only fire SAAMI rated Plus P (“+P”) ammunition in Taurus® models designated by Taurus for +P use as below. **Firing +P ammunition in other Taurus products may be dangerous and can result in serious bodily injury or death.**

Model 85 small-frame revolver in 38 Special.

Model 856 small-frame revolver in 38 Special.

Model 850 small-frame revolver in 38 Special.

Model 851 small-frame revolver in 38 Special.

Model 85 Polymer small-frame revolver in 38 Special.

Model 82 medium-frame revolver in 38 Special.

Model 817 compact frame (tracker) revolver in 38 Special.

All firearms chambered in 38 Super Automatic.

All firearms chambered in 45 Automatic (ACP).

All firearms chambered in 9mm Luger.

## NOTICE

Even if your Taurus® firearm is rated for Plus-P (“+P”) ammunition, such ammunition generates pressures significantly in excess of the pressures associated with standard ammunition. Such pressures may affect the useful life of the firearm or exceed the margin of safety built into many firearms. Unless you need +P ammunition, do not use it, particularly for practice.

## FIREARMS ARE NOT ALL ALIKE

Many makes and models of firearms might LOOK nearly the same. However, they differ widely in design, operation, and in the location and function of various controls. You may access the Taurus® website at TaurusUSA.com to view and print manuals.

## “JAMS”

**SOMETIMES A CARTRIDGE OR SHELL CASE MAY BECOME “JAMMED” OR STUCK IN THE PISTOL. TO CLEAR THE JAM, (1) POINT THE MUZZLE IN A SAFE DIRECTION, (2) KEEP YOUR FINGER OFF THE TRIGGER, TIP UP THE BARREL AND PICK OUT CARTRIDGE FROM CHAMBER.**



### WARNING - FIRING

The slide opens and shuts quickly while firing. Keep face and hands away from rear of slide. Hot brass is ejected quickly and can burn you. Always wear shooting glasses, hat with brim, and hearing protection.



### WARNING - ANY GUN MAY FIRE IF DROPPED

If dropped or struck, the pistol may fire.



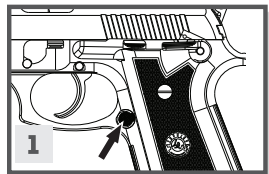
### WARNING

If dropped or struck the firearm should be inspected by a qualified armorer/gunsmith for a complete function check. After the firearm was dropped or struck, mechanisms, including automatic safeties, may not function as intended resulting in accidental death or serious injury.

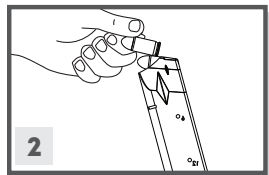
## OPERATING INSTRUCTIONS

The Taurus® 92 does not have a magazine disconnect (magazine safety). They will fire the round in the chamber with the magazine removed.

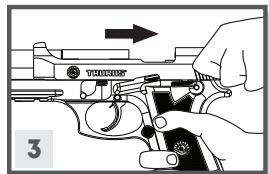
### To load and fire your pistol:



1. Remove the **magazine** by pressing the **magazine release button**, located on the grip, with your thumb.



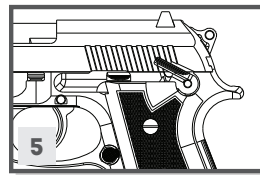
2. Hold the **magazine** in one hand and insert cartridges, one at a time, bullet forward, by pressing them down and to the rear.



3. After re-inserting the **magazine**, hold the pistol with one hand keeping your finger away from the **trigger**. With the other hand, pull the **slide** to its limit and release it or push down the **slide catch**, so the **slide** will go forward under the **recoil spring** force and will insert one cartridge in the **chamber**.



4. The pistol is now cocked and ready to fire by pulling the **trigger**. After firing, the **slide** will recoil from gas pressure and will eject the empty cartridge case and feed another cartridge into the **chamber**. The pistol will be ready to fire again. After the last round, the slide will remain in the open position held by the **slide catch**. In order to make it return to its rest position, press the **slide catch** just above the left **grip**.



5. If you want to stop shooting before firing the last cartridge of a **magazine**, decock the firearm immediately by moving the **safety lever** downward then engage the **safety** by pushing the **safety lever** in the up (on) position.

6. Aim the pistol with the low-profile fixed sights. To fire, pull the **trigger** smoothly and fully to the rear.

7. After firing, the **slide** will “recoil” (come back toward you) and eject the empty cartridge case and then quickly feed another cartridge into the **chamber**. The pistol will be ready to fire again. After the last round is out of the **magazine**, the **slide** will remain in the open position. In order to make the **slide** return to its forward position, with the **magazine** removed, pull the **slide** slightly to the rear and release the **slide**.

 **CAUTION**

Failure to ensure the manual safety lever is completely in the "off" position will result in damage to the pistol.

 **WARNING - FIRING**

The slide opens and shuts quickly while firing. Keep face and hands away from rear of slide. Hot brass is ejected quickly and can burn you. Always wear shooting glasses, hat with brim, and hearing protection.

 **WARNING - ANY GUN MAY FIRE IF DROPPED**

If dropped or struck, the pistol may fire.

 **WARNING**

Take care to prevent the forcible ejection of the guide rod assembly and compressed recoil spring.

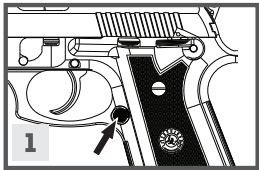
## DISASSEMBLY

### WARNING

Always wear eye protection that is specified for use with firearms (ANSI Z87.1+) every time you handle your firearm for cleaning and maintenance.

### WARNING

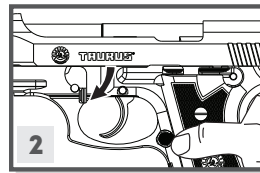
After removing the magazine, always check the chamber and make sure it is empty.



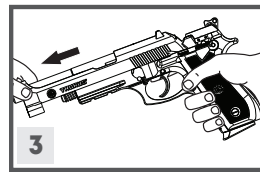
1. Before disassembly always (1) Keep your finger off or the **trigger**, (2) point the **muzzle** in a safe direction (3) remove the **magazine** by pressing the **magazine release button** (4) pulling the **slide** to the rear and locking back and (5) looking and feeling the **magazine well** and **chamber** to confirm the pistol is empty. An empty firearm cannot fire.

### WARNING

After removing the magazine, always check the chamber and make sure it is empty.



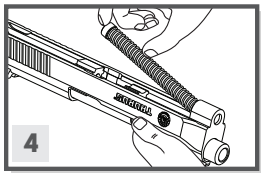
2. Press the **disassembling latch release** and rotate the **disassembling latch** 90 degrees clockwise.



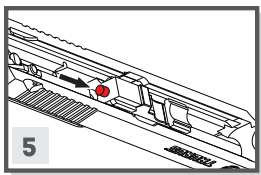
3. Pull the **slide-barrel assembly** forward.

## NOTICE

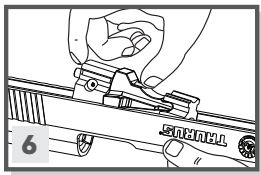
While removing the disassembly latch, make sure that the slide won't be damaged (scratched).



4. Release **recoil spring assembly** from its position on the bottom of the **barrel**. Lift and remove it carefully.



5. Press **locking block plunger** forward.



6. Remove the **barrel** from the **slide** by pulling to the front and up.

 **WARNING**

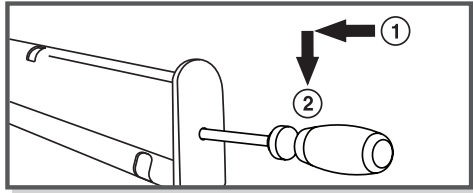
No further cleaning or disassembly is recommended unless done by a qualified gunsmith.

## ASSEMBLY

In order to reassemble the pistol, proceed by reversing the disassembly instructions.

## DISASSEMBLING YOUR MAGAZINE

1. Use a **punch** to press the **magazine plate** down, then **pull** the magazine bottom out of the magazine body.



2. Withdraw the magazine spring plate and magazine spring from the magazine body. Turn the magazine upside down and remove the magazine follower.

3. Assemble in reverse order.

## CARE AND MAINTENANCE

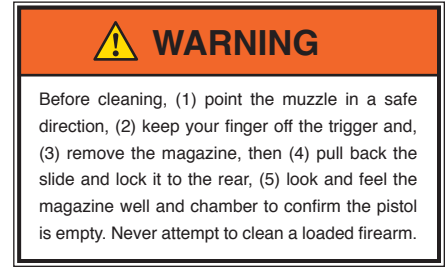
The firearm may be cleaned and lubricated under normal conditions with the disassembly steps described in pages 26-28.

In order to keep a firearm safe to use, it must be kept clean and covered with a light film of good quality gun oil to prevent corrosion. The barrel bore should be cleaned and left free of debris.

For normal cleaning, rub the pistol with a lightly oiled cloth. In the same way, proceed with the bore of the barrel. Excess oil should be removed.

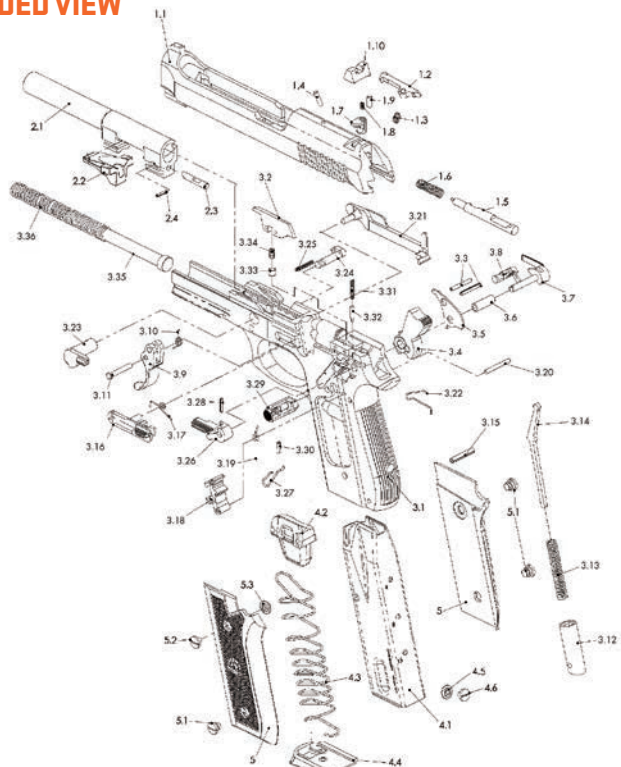
Dust should be removed from all crevices with a small clean brush.

Please note that a firearm with laser should not be cleaned in a well or supersonic machine that submerges the firearm as this can damage the laser system.





## EXPLODED VIEW



## PART LIST

- 1. SLIDE ASSEMBLY
- 1.1 SLIDE
- 1.2 EXTRACTOR
- 1.3 EXTRACTOR SPRING
- 1.4 EXTRACTOR PIN
- 1.5 FIRING PIN
- 1.6 FIRING PIN SPRING
- 1.7 FIRING PIN BLOCK
- 1.8 FIRING PIN BLOCK SPRING
- 1.9 FIRING PIN BLOCK PIN
- 1.10 REAR SIGHT ASSEMBLY
- 2. BARREL ASSEMBLY
- 2.1 BARREL
- 2.2 LOCKING BLOCK
- 2.3 LOCKING BLOCK PLUNGER
- 2.4 LOCKING BLOCK PLUNGER PIN
- 3.1 FRAME
- 3.2 EJECTOR
- 3.3 EJECTOR PIN
- 3.4 HAMMER
- 3.5 FIRING PIN BLOCK LEVER
- 3.6 HAMMER BUSHING
- 3.7 RIGHT SAFETY LATCH
- 3.8 HAMMER CATCH
- 3.9 TRIGGER
- 3.10 TRIGGER SPRING
- 3.11 TRIGGER PIN
- 3.12 HAMMER SPRING SUPPORT
- 3.13 HAMMER SPRING
- 3.14 HAMMER SPRING GUIDE
- 3.15 HAMMER SPRING SUPPORT PIN
- 3.16 SLIDE CATCH
- 3.17 SLIDE CATCH SPRING
- 3.18 SEAR
- 3.19 SEAR SPRING
- 3.20 SEAR PIN
- 3.21 TRIGGER BAR
- 3.22 TRIGGER BAR SPRING
- 3.23 DISASSEMBLING LATCH
- 3.24 DISASSEMBLING LATCH RELEASE
- 3.25 DISASSEMBLING LATCH RELEASE SPRING
- 3.26 LEFT SAFETY LATCH
- 3.27 SAFETY SPRING
- 3.28 SAFETY ELASTIC PIN
- 3.29 MAGAZINE RELEASE ASSEMBLY
- 3.30 MAGAZINE RELEASE CASE PIN
- 3.31 SAFETY PLUNGER SPRING
- 3.32 SAFETY PLUNGER
- 3.33 HAMMER CATCH PLUNGER
- 3.34 HAMMER CATCH PLUNGER SPRING
- 3.35 RECOIL SPRING GUIDE
- 3.36 RECOIL SPRING
- 4. MAGAZINE ASSEMBLY
- 4.1 MAGAZINE BODY
- 4.2 MAGAZINE FOLLOWER
- 4.3 MAGAZINE SPRING
- 4.4 MAGAZINE BOTTOM
- 4.5 MAGAZINE PLATE
- 5. GRIPPAIR
- 5.1 GRIP SCREW
- 5.2 LEFT GRIP UPPER SCREW
- 5.3 LEFT GRIP UPPER BUSHING

## TAURUS SERVICE

Should your firearm require adjustment or repair contact our Customer Care department at 800-327-3776.

Please follow these suggestions to expedite service in the United States to return any firearm to us for adjustment or repair.

1. Federal law permits you to return your firearm to the manufacturer for service via common carriers. However, state and local firearms laws vary greatly; you should consult your local prosecuting attorney regarding any restrictive laws in your jurisdiction regarding your shipment or receipt of firearms. With the above in mind, it is strongly recommended that any firearm sent to us for repair be sent through a federally licensed dealer.

2. All firearms must be shipped to us prepaid. WE WILL NOT ACCEPT COLLECT SHIPMENTS.

3. Warranty Service: If your product is covered under the Taurus® Limited Lifetime Warranty (<https://warranty.taurususa.com>) or was manufactured prior to January 1, 2017, you must contact Taurus to receive warranty service. You may contact Taurus by calling 800-327-3776, logging onto <https://taurususa.com>, or in writing: Taurus, Attn: Warranty Service, 100 Taurus Way, Bainbridge, GA 39817. Please include a description of the claimed defect, along with your name, address, telephone number, model and serial number of your firearm, proof of purchase, and date of purchase.

4. FIREARMS MUST BE SHIPPED UNLOADED. Double check the chambers of your firearm before shipping. If firearms are sent to Taurus in a loaded condition, we are required by law to notify the Federal authorities.

5. DO NOT include telescopic sights, custom grips, holsters, or other accessories with any firearm shipped to us.

## PARTS

Firearms require periodic maintenance, inspection, adjustment and repair. If your pistol has a malfunction, be safe. Stop firing, “clear” and unload the pistol and take it to a qualified gunsmith. Before shooting it again, contact our Customer Care department if you have any questions.

If water, sand, or other foreign matter gets in your pistol, field strip it (see pages 26-28) and thoroughly clean it. Failure to keep your firearm clean and in proper working order can be dangerous.

Our Customer Care department maintains a full stock of replacement parts for current Taurus firearms. Even though most gunsmiths have the knowledge, training and ability to make the necessary repairs to your firearm, the skill and workmanship of any particular gunsmith is totally beyond our control. Should your firearm require service, return it to our Customer Care department.

Remember, unauthorized adjustments or parts replacement can void your warranty. If you choose to have someone else do the required work, the purchaser and/or installer of parts must accept full responsibility for the correct adjustment and function of the firearm.



## **TAURUS® LIMITED LIFETIME WARRANTY**

Taurus® hereby provides the following **LIMITED LIFETIME WARRANTY**, to the original purchaser of the enclosed Taurus firearm subject to the terms and conditions set forth below. **THIS IS THE ONLY WARRANTY EXTENDED BY TAURUS COVERING THIS FIREARM.**

### **What does the warranty cover and what is its duration?**

Taurus warrants to the original purchaser that the enclosed firearm was made free of defects in material, function, and workmanship. Taurus promises to remedy any defect in material, function or workmanship for the entire time that the original purchaser owns the firearm. This warranty covers the firearm's finish, grips, magazines, sights or accessories for the first year. Any claims of defect related to lasers must be directed to the manufacturer of the laser. This warranty terminates automatically upon the transfer of this firearm to any individual or entity other than the original purchaser.

### **Disclaimer and Limitation of Remedy.**

**ANY IMPLIED WARRANTIES OF MERCHANTABILITY IMPARTED BY STATE LAW WILL BE LIMITED TO ONE (1) YEAR.**

Some States do not allow limitations on how long an implied warranty lasts, so the above-limitation may not apply to you.

**ANY AND ALL INCIDENTAL AND CONSEQUENTIAL DAMAGES ARE EXPRESSLY DISCLAIMED UNDER ALL CIRCUMSTANCES.**

Some States do not allow the exclusion or limitation of incidental or consequential damages, so the above limitation or exclusion may not apply to you. This **LIMITED LIFETIME WARRANTY** gives you specific legal rights, and you may also have other rights which vary from State to State.

Taurus will not be responsible for:

1. Defects or malfunctions resulting from careless handling, unauthorized adjustments or modifications.
2. Use of defective or improper ammunition, reloaded ammunition, corrosion, neglect, abuse, ordinary wear and tear or unreasonable use.
3. Criminal misuse, negligence or use under the influence of drugs or alcohol.

### **How do you obtain warranty service?**

The warranty becomes effective only if activated by the original purchaser within thirty (30) days of the purchase date by registering online at: <https://warranty.taurususa.com> or by calling Taurus at 800-327-3776.

You must contact Taurus to receive warranty service. You may contact Taurus by calling 800-327-3776, logging onto <https://taurususa.com>, or in writing: Taurus, Attn: Warranty Service, 100 Taurus Way, Bainbridge, GA 39817. Please include a description of the claimed defect, along with your name, address, telephone number, model and serial number of your firearm, proof of purchase, and date of purchase.

## NOTES

---

---

---

---

---

---

---

---

---

---

---

---

---

---

---

---

---

---

---

---

## **IMPORTANT DO NOT DISCARD**

KEEP THIS MANUAL WITH THE FIREARM  
UPON CHANGE OF OWNERSHIP.

### **TAURUS ARMAS, S.A.**

Av. São Borja, 2181 – Prédio A  
São Leopoldo/Fazenda São Borja  
Rio Grande do Sul  
93.035-411  
Brasil

### **TAURUS INTERNATIONAL MANUFACTURING, INC.**

100 Taurus Way  
Bainbridge, GA 39817  
Telephone: 1-800-327-3776



**TAURUSUSA.COM**

MKG50030 REV. 4