

PHOENIX

OWNER'S MANUAL



TRUE. AMERICAN. ORIGINAL.



Born from the ashes and designed from the ground up. The Phoenix 9mm subgun is the perfect plinking platform yet built for serious duty. It's an ideal host for your suppressed shooting and features a 1913 picatinny rail at the rear, making future conversions or adding a brace a breeze.

The direct blowback system has proven to be extremely reliable around the world. Ambidextrous controls and our 4.5lb drop-in match grade trigger deliver extreme ergonomics and accuracy suitable for all skill levels.

- CALIBER**..... 9X19mm
- ACTION** Semi-auto
- WEIGHT** 4.6 lbs / 2 kg (empty)
- BARREL** 8.5" / 21.6cm
- RIFLING** 1:10 , 1/2x28 muzzle threads
- LENGTH** 17.5" / 44.5cm
- FINISH** Black anodized
- HANDGUARD** Monolithic upper receiver with M-LOK
- MUZZLE DEVICE** Dual Chamber Muzzle Brake
- TRIGGER**..... MIL-SPEC AR-style
- FURNITURE**..... Mission First Tactical
- FIRE CONTROL** Ambidextrous



GET TO KNOW YOUR



1/2-28 muzzle threads with muzzle brake

Monolithic upper receiver with M-LOK® compatibility

Charging handle

Ambidextrous magazine release

MIL-SPEC trigger

AR15 compatible trigger, selector, and grip



Table of Contents

WELCOME TO POF-USA 2

STATE BY STATE WARNINGS 3

FIREARM SAFETY RULES 6

BREAK-IN PROCEDURES 7

GENERAL OPERATION..... 8

 OPERATION OF SAFETY 8

 OPERATION OF BOLT CATCH 9

AMMUNITION 11

MAGAZINES 12

LOADING 12

MAGAZINE DISASSEMBLY/ASSEMBLY 13

INSERTING..... 14

REMOVING..... 14

LOAD AND FIRE WITH MAGAZINE 15

LOAD AND FIRE WITHOUT MAGAZINE 16

UNLOAD 16

TO RELOAD THE FIREARM 17

 EXTRACT AND EJECT A CHAMBERED CARTRIDGE 17

 REMOVE A BORE OBSTRUCTION..... 18

 CLEAR A MALFUNCTION 19

 MINIMIZE MALFUNCTIONS..... 20

DISASSEMBLY 21

REASSEMBLY 23

 BOLT AND RECOIL ASSEMBLY..... 24

 HAND GUARD 25

CARE AND CLEANING 26

WARRANTY POLICIES..... 26

MODEL SPECIFIC (PHOENIX 9MM) 28

DIAGRAMS 29



WELCOME TO POF-USA

Patriot Ordnance Factory, Inc. (POF-USA) is an American owned and operated small business with facilities headquartered in Phoenix, Arizona. All POF-USA firearms are American made. POF-USA firearms are engineered and tested to assure they meet the highest standards for durability and performance. Read this manual in its entirety before attempting to operate your POF-USA firearm. In addition, POF-USA recommends that you receive proper training in the handling of firearms prior to handling any firearm.



WARNING



Please read the instructions and warnings contained in this manual BEFORE attempting to handle, load or utilize the POF-USA family of firearms. Even if you are familiar with the standard AR-10, AR-15, M-16, and/or M-4 family of firearms, you need to familiarize yourself with POF-USA firearms and their accessories before using them in any manner. Failure to do so could result in damage to the firearm, bodily injury to the shooter or bystanders, or even death.

The POF-USA firearms are designed for factory manufactured cartridges only. Using hand-loaded, remanufactured, reloaded, or other non-standard ammunition could result in serious malfunction, damage to the firearm, or serious bodily injury to the shooter or bystanders, or even death. POF-USA, Inc. is not liable for any damage to the weapon, bodily injury to person(s), or damage to any property resulting from the use or misuse of any firearm. This manual should always accompany this firearm. A replacement copy can be obtained anytime by visiting our website at www.pof-usa.com.

The safety warnings are for the protection of the owner and operator of this POF-USA firearm as well as the safety of others. Disregarding information in this manual or failure to follow the basic rules of safe firearms handling can result in property damage, bodily injury and even death.

- **Always wear eye and hearing protection**
- **Handle every firearm as if it were loaded**
- **Always keep the muzzle pointed in a safe direction**
- **Never chamber a round until you are ready to shoot**
- **Safety selector is on "SAFE" or engaged until ready to fire**

**PROTECT OUR CHILDREN
STORE YOUR FIREARMS RESPONSIBLY**



STATE BY STATE WARNINGS

Some states require by law that specified warning notices in “larger-than-normal” type be conspicuously included by the manufacturer, distributor, or retailer with firearms sold in that state. Since our products may be sold in those states, we include the following:

California:**WARNING**

“Children are attracted to and can operate firearms that can cause severe injuries or death. Prevent child access by always keeping guns locked away and unloaded when not in use. If you keep a loaded firearm where a child obtains and improperly uses it, you may be fined or sent to prison.”

**ADVERTENCIA**

“Los niños se sienten atraídos y se puede operar las armas de fuego que pueden causar lesiones graves o la muerte. Evitar el acceso niño siempre manteniendo las armas bajo llave y descargadas cuando no esté en uso. Si usted mantiene un arma de fuego cargada en que un niño obtiene y utiliza inadecuadamente, usted puede recibir una multa de enviado a la cárcel”.

Connecticut:

“UNLAWFUL STORAGE OF A LOADED FIREARM MAY RESULT IN IMPRISONMENT OR FINE”

Florida:

“IT IS UNLAWFUL, AND PUNISHABLE BY IMPRISONMENT AND FINE, FOR ANY ADULT TO STORE OR LEAVE A FIREARM IN ANY PLACE WITHIN THE REACH OR EASY ACCESS OF A MINOR UNDER 18 YEARS OF AGE OR TO KNOWINGLY SELL OR OTHERWISE TRANSFER OWNERSHIP OR POSSESSION OF A FIREARM TO A MINOR OR A PERSON OF UNSOUND MIND”

Maine:

“ENDANGERING THE WELFARE OF A CHILD IS A CRIME. IF YOU LEAVE A FIREARM AND AMMUNITION WITHIN EASY ACCESS OF A CHILD, YOU MAY BE SUBJECT TO FINE, IMPRISONMENT OR BOTH. KEEP FIREARMS AND AMMUNITION SEPARATE. KEEP FIREARMS AND AMMUNITION LOCKED UP. USE TRIGGER LOCKS.”

Maryland:

“WARNING: Children can operate firearms which may cause death or serious injury. It is a crime to store or leave a loaded firearm in any location where an individual knew or should have known that an unsupervised minor would gain access to the firearm. Store your firearm responsibly!”

Massachusetts:

“WARNING FROM THE MASSACHUSETTS ATTORNEY GENERAL: This handgun is not equipped with a device that fully blocks use by unauthorized users. More than 200,000 firearms like this are stolen from their owners every year in the United States. In addition, there are more than a thousand suicides each year by younger children and teenagers who get access to firearms. Hundreds more die from accidental discharge. It is likely that many more children sustain serious wounds or inflict such wounds accidentally on others. In order to limit the chance of such misuse, it is imperative that you keep this weapon locked in a secure place and take steps necessary to limit the possibility of theft or accident. Failure to take reasonable preventive steps may result in innocent lives being lost, and in some circumstances may result in your liability for these deaths.”

“IT IS UNLAWFUL TO STORE OR KEEP A FIREARM, RIFLE, SHOTGUN, OR MACHINE GUN, IN ANY PLACE UNLESS THAT WEAPON IS EQUIPPED WITH A TAMPER-RESISTANT SAFETY DEVICE OR IS STORED OR KEPT IN A SECURLY LOCKED CONTAINER.”

New Jersey:

“IT IS A CRIMINAL OFFENSE TO LEAVE A LOADED FIREARM WITHIN EASY ACCESS OF A MINOR.”

North Carolina:

“IT IS UNLAWFUL TO STORE OR LEAVE A FIREARM THAT CAN BE DISCHARGED IN A MANNER THAT A REASONABLE PERSON SHOULD KNOW IS ACCESSIBLE TO A MINOR.”

Texas:

“IT IS UNLAWFUL TO STORE, TRANSPORT, OR ABANDON AN UNSECURED FIREARM IN A PLACE WHERE CHILDREN ARE LIKELY TO BE AND CAN OBTAIN ACCESS TO THE FIREARM.”

Wisconsin:

“IF YOU LEAVE A LOADED FIREARM WITHIN THE REACH OR EASY ACCESS OF A CHILD YOU MAY BE FINED OR IMPRISONED OR BOTH IF THE CHILD IMPROPERLY DISCHARGES, POSSESSES, OR EXIBITS THE FIREARM.”

As a responsible firearm owner it is your responsibility to be aware of any local, state, or federal laws governing the lawful ownership of firearms. The above is not all inclusive of all states and is subject to change. Please check with your local retailer, state police, and local law enforcement for current regulations in your area.

Visit the NRA website (www.nra.org) or the BATFE website (www.atf.gov) for further information.



FIREARM SAFETY RULES

1. **Treat all firearms as if they are loaded.** Always assume that a firearm is loaded even if you think it is unloaded. Every time a firearm is handled, for any reason, check to see that it is unloaded. If you are unable to check a firearm to see if it is unloaded, leave it alone and seek help from someone more knowledgeable about firearms.
2. **Keep the firearm pointed in the safest possible direction.** Always be aware of where a firearm is pointing. A "safe direction" is one where an accidental discharge of the firearm will not cause injury or damage. Only point a firearm at an object you intend to shoot. Never point a firearm toward yourself or another person.
3. **Keep your finger off the trigger until you are ready to shoot.** Always keep your finger off the trigger and outside the trigger guard until you are ready to shoot. Even though it may be comfortable to rest your finger on the trigger, it also is unsafe. If you are moving around with your finger on the trigger and stumble or fall, you could inadvertently pull the trigger. Sudden loud noises or movements can result in an accidental discharge because there is a natural tendency to tighten the muscles when startled. The trigger is for firing and the handle is for handling.
4. **Know your target, its surroundings and beyond.** Check that the areas in front of and behind your target are safe before shooting. Be aware that if the bullet misses or completely passes through the target, it could strike a person or object. Identify the target and make sure it is what you intend to shoot. If you are in doubt, DON'T SHOOT! Never fire at a target that is only a movement, color, sound or unidentifiable shape. Be aware of all the people around you before you shoot.
5. **Know how to properly operate your firearm.** It is important to become thoroughly familiar with your firearm. You should know its mechanical characteristics including how to properly load, unload and clear a malfunction from your firearm. Obviously, not all firearms are mechanically the same. Never assume that what applies to one make or model is exactly applicable to another. You should direct questions regarding the operation of your firearm to your firearms dealer or contact the manufacturer directly.
6. **Store your firearm safely and securely to prevent unauthorized use.** Firearms and ammunition should be stored separately. When the firearm is not in your hands, you must still think of safety. Use a safety device on the firearm, such as a trigger lock or cable lock, so it cannot be fired. Store it unloaded in a locked container, such as a lock box or a firearm safe. Store your firearm in a different location than the ammunition. For maximum safety, you should use both a locking device and a storage container.
7. **Never use Alcohol, Over-The-Counter, Prescription, or other drugs before or while shooting.** These substances are likely to impair normal mental or physical bodily functions and must not be used before or while handling or shooting firearms.



BREAK-IN PROCEDURES

Breaking In Your New Weapon

1. Thoroughly clean the chamber of your new weapon, and clean after every shooting session. The chamber of the new weapon may be cleaned via the drill method as described under the “Cleaning Procedures” section on the POF-USA support page. Or with the use of the proper rod, bore solvent, and brass brush by hand.

Check out our links on the technical page for cleaning procedures and tips

<http://pof-usa.com/support/>

(Please Note: Videos and technical information will be uploaded and updated constantly during the lifespan of the weapon.)

2. Conservatively lube the bolt with your favorite firearm lubricant. After lubing, wipe down any excess and visibly pooled lubricant. Only a thin film along any riding surface is necessary. Please note: the thicker the lubricant is the more often you will have to clean your weapon. As your weapon breaks in less lubrication will be needed and after a few hundred rounds just a light wipe will be sufficient.
3. There is no break-in required for the barrel, just clean it at the end of each shooting session. This includes cleaning the chamber. A dirty chamber will be the leading cause of failures to feed and/or extract.
4. POF-USA only recommends the use of factory new ammunition and cannot offer you advice or tips regarding hand loading or re-loaded ammunition.

GENERAL OPERATION

OPERATION OF SAFETY

The manual safety mechanism is located above the trigger on the left side (and right if ambidextrous equipped) of the lower receiver. The safety can be moved to “SAFE” anytime the hammer is cocked. When the safety is on, it blocks the trigger. The safety should always be kept in “SAFE” mode when loading or unloading the firearm and should be kept in “SAFE” mode at all times unless firing the firearm. Firearms are in the “SAFE” position when the lever is in a horizontal position. **(See Figures 1 & 2 below).**



Figure 1
“SAFE”



Figure 2
“FIRE”

Keep the safety on unless firing. Always move the safety fully to its intended position and check it. The safety is not “ON” unless it is completely “ON”. Never depend on a safety mechanism or any mechanical device to justify careless handling or permitting the firearm to point in an unsafe direction. The only “safe” firearm is one in which the bolt is open, the chamber is empty, and there is no magazine in the gun.

KNOW HOW TO USE THE SAFETY

OPERATION OF BOLT CATCH

POF-USA firearms are designed so that the bolt will remain open after the last shot has been fired, provided there is a correctly functioning magazine in the firearm. When the magazine is empty, the magazine follower engages the bolt catch, which retains the bolt group, in the rearward position.

***WARNING: The bolt catch is NOT a safety device. It should not be used to hold back the bolt when there are cartridges in the magazine. A slight jar to the butt end of the firearm can cause the bolt catch to disengage allowing the bolt to go forward and feed a cartridge into the chamber.**

*The bolt catch should be used to hold the bolt in its rearward position only when the chamber is empty, and an empty magazine is in place. The bolt catch is there for convenience when changing magazines.

To hold the bolt open:

1. Put safety on "SAFE".
2. Pull the charging handle all the way to the rear.
3. Depress the bottom part of the bolt catch plunger and allow the bolt to move forward until it stops. **(See Figure 3)**



Figure 3

To release, allowing the bolt to move forward, KEEP SELECTOR ON SAFE and either:

1. Remove the magazine; draw the charging handle to the rear and release. Allow the handle to spring forward freely. Do not “ride” the charging handle or otherwise retard the forward motion.
2. Push the top part of the bolt catch toward the lower receiver and the bolt will release. **(See Figure 4)**



Figure 4

3. Additionally, you may depress the bolt release lever on the right side of the firearm. **(See Figure 5)**



Figure 5

AMMUNITION

POF-USA only recommends the use of factory new ammunition loaded in accordance with U.S. industry practice and cannot offer any advice or tips regarding hand loaded or reloaded ammunition. Damages due to high pressure, reloaded, or non-standard ammunition is not covered under warranty.

Death, serious injury and damage can result from the use of wrong ammunition; bore obstructions, powder overloads, or incorrect cartridge components. Always wear eye protection and hearing protection.

ONLY USE FACTORY AMMUNITION LOADED TO U.S. INDUSTRY STANDARDS

POF-USA SPECIFICALLY DISCLAIMS ANY RESPONSIBILITY FOR ANY DAMAGE OR INJURY WHATSOEVER OCCURRING IN CONNECTION WITH, OR AS A RESULT OF, THE USE IN POF-USA FIREARMS OF FAULTY, OR NON-STANDARD, OR "REMANUFACTURED", OR HAND LOADED (RELOADED) AMMUNITION, OR OF CARTRIDGES OTHER THAN THOSE FOR WHICH THE FIREARM WAS ORIGINALLY CHAMBERED

WARNING-LEAD EXPOSURE

Discharging firearms in poorly ventilated areas, cleaning firearms, or handling ammunition may result in exposure to lead and other substances known to the State of California to cause birth defects, reproductive harm, and other serious physical injury. Wash hands thoroughly after exposure.

SHOOTING OR CLEANING GUNS MAY EXPOSE YOU TO LEAD

MAGAZINES

The Phoenix 9MM is supplied with a 35-round magazine where legally permitted. This magazine is manufactured by POF-USA and is proprietary to POF-USA and this firearm platform.

Firearms supplied to states with magazine restrictions are shipped with the appropriate magazine based upon the state restriction.

DAMAGED, NON-STANDARD, OR IMPROPERLY ASSEMBLED MAGAZINES

SHOULD NOT BE USED – THEY CAN CAUSE THE FIREARM TO MALFUNCTION

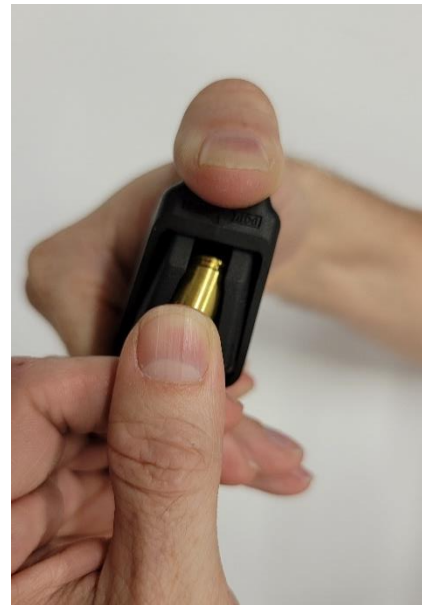
LOADING

Use only clean, dry ammunition of the proper caliber manufactured to U.S. Industry specifications, in good condition. Place the cartridge between the feed lips of the magazine, push the rim of the cartridge down on the follower of the magazine at the widest point near the center. With the follower pushed down slide the round toward the rear of the magazine. Confirm that the rim of the case is pushed as far rearward in the feed lips as possible. Each round after the first is pressed against the case of the round already positioned in the magazine. Repeat the process until the desired number of cartridges are loaded.



If using the magazine loader, follow the steps outlined below.

All magazines are shipped with a POF-USA magazine loader. Orientate the magazine loader onto the magazine as shown. With the magazine loader/magazine in one hand, pick up a round with the other. Press the magazine loader down onto the follower or last loaded round. Begin to slide the next round into place. When the round reaches the tang on the magazine loader begin to lift the loader and finish sliding the round into place until the rim meets the back of the feed lips.

**MAGAZINE DISASSEMBLY/ASSEMBLY**

All POF-USA Phoenix 9MM magazines are designed to be disassembled and reassembled. Disassembly is only recommended when necessary, such as if the magazine is dirty to the point where it no longer functions reliably.

DISASSEMBLY

1. Press the button (lock plate) located on the bottom of the magazine baseplate.
2. While the button is pressed pinch the side tabs inward. PLEASE NOTE: The side tabs are manufactured to a tight tolerance to ensure locking of the magazine. Due to this, they may be difficult to depress. The use of a clamping device may be necessary to depress the side tabs fully.

3. With the side tabs depressed. The base plate should slide out of the magazine. Be mindful that the spring is still under pressure and may shoot out if not contained.
4. The spring and follower should then fall out of the magazine.
5. Reassemble all components in the same order and orientation that they were removed.

INSERTING

The magazine may be inserted with the bolt either closed or open (see OPERATION OF BOLT CATCH Page 9). More force will be required to insert the magazine with the bolt in the closed position in order to overcome the bolt.

1. Hold the magazine as shown and insert it into the magazine well until it is seated/latched.
2. Check to assure it is securely latched in place by pulling on the magazine, it should not come out.



REMOVING

To remove the magazine, push the magazine catch button towards the lower receiver from the right side (**See Figure 11**) or the magazine release lever from the left side via the ambidextrous button (**See Figure 12**) until the magazine drops out of the magazine well. Avoid letting the magazine drop to the ground, this will prevent the possibility of damage to the magazine and minimize the possibility of magazine related malfunctions.



Figure 11



Figure 12

LOAD AND FIRE WITH MAGAZINE

Safe firearm handling should be practiced with an unloaded firearm until you can perform each of the following steps with skill and confidence. Please read this manual completely prior to operating your POF-USA firearm.

1. Be certain the muzzle is pointed in a safe direction.
2. Before inserting a loaded magazine, engage the bolt catch so that the bolt is held open. Verify the chamber is empty. Move the safety selector to the “ON” or “SAFE” position.
3. Insert a loaded magazine into the magazine well and release the bolt catch by depressing the pad on the left side. A cartridge will be stripped from the magazine and chambered by the motion of the bolt moving forward.

WARNING: *If cartridges do not feed smoothly from the magazine into the chamber then do not use the firearm until the problem is corrected (See CLEAR A MALFUNCTION, Page 16-17)*

4. The firearm is now cocked, and a cartridge is chambered. Visually check to be certain the safety is in the “ON” or the “SAFE” position, and the firearm is pointed in a safe direction.
5. When you are ready to fire, move the safety to the “FIRE” position.

WARNING: DO NOT TOUCH THE TRIGGER UNTIL YOU ARE ACTUALLY READY TO FIRE.

KEEP THE SAFETY "ON" UNLESS ACTUALLY FIRING

6. The firearm will fire one shot each time the trigger is pulled until the magazine is empty.
7. Immediately following the firing of the shot and if no other shots are to be fired, put the safety in the "SAFE" position while the firearm is still pointed in a safe direction. The safety should always be moved to the "SAFE" position as soon as firing is completed, and it should be on "SAFE" at all times except when the firearm is on target and being fired.

IF DROPPED OR STRUCK WITH THE SAFETY "OFF", THE FIREARM MAY FIRE.

KEEP THE CHAMBER EMPTY UNLESS ACTUALLY FIRING!

KEEP THE SAFETY ON IN THE "SAFE" POSITION UNLESS ACTUALLY FIRING!

ANY GUN MAY FIRE IF DROPPED

LOAD AND FIRE WITHOUT MAGAZINE

Your firearm can be used as a single shot in the absence of a magazine or for training purposes. To do so, follow steps 1 & 2 above then manually load a cartridge into the chamber. Then follow steps 4 & 5 (disregard magazine). Note that the bolt will not automatically lock back after the cartridge is fired and ejected. Engage the safety between shots.

UNLOAD

WARNING: This sequence must be followed exactly as spelled out. Failure to do so can result in the rifle's chamber becoming unintentionally loaded with a cartridge!

1. Keep the muzzle pointed in a safe direction at all times and keep the fingers outside the trigger guard. Rotate the safety to the "SAFE" position.
2. Remove the magazine. **REMEMBER** that even though the magazine has been removed, a cartridge remaining in the chamber can still be fired!



3. Rapidly pull the charging handle all the way to the rear, extracting and ejecting the cartridge in the chamber.
4. When the bolt is fully retracted, lock the bolt back using the appropriate method laid out on page 9.
5. Always visually double check the chamber to be certain it is empty.
6. The only “safe” firearm is one in which the bolt is open, and the chamber and magazine are empty, and the muzzle is pointed in a safe direction.



TO RELOAD THE FIREARM

1. Keep the rifle pointed in a safe direction. Put the safety in the “SAFE” position.
2. Remove the magazine as described on page 14.
3. Insert a loaded magazine. **WARNING:** The bolt catch is held in place by friction between the bolt face and the rear surface of the bolt catch. Therefore, when there is a loaded magazine in place and the rifle is jarred, the bolt can release and chamber a cartridge.
4. Release the bolt by the methods described on page 9. A cartridge will be chambered when the bolt shuts. **WARNING:** The rifle is ready for instant use once the bolt moves forward. If the rifle is not to be fired immediately, keep the safety on “SAFE”. When you are ready to fire, move the selector to the “FIRE” position and resume firing, putting the safety back on “SAFE” when you cease firing, even for a moment.

EXTRACT AND EJECT A CHAMBERED CARTRIDGE

When the rifle is fired, the same pressure that drives the bullet forward pushes the bolt to the rear. This action causes extraction and ejection of the fired cartridge case. If a cartridge fails to fire or if the shooter wishes to eject the chambered cartridge manually, follow the procedure described in “UNLOAD”. When the charging handle is operated, there can be a failure to extract the cartridge from the chamber, or a failure to eject the cartridge clear of the rifle. These failures usually are the result of the charging handle not being pulled rearward vigorously. From the foregoing, the user must:

1. Always visually check the chamber after opening the action to eject a chambered cartridge. If the charging handle is not vigorously retracted, the extracted cartridge can be “ejected” into the magazine area.

2. Thoroughly clean the chamber and the extractor as often as necessary. If an empty magazine is in the rifle when the charging handle is being retracted to extract a cartridge, the cartridge may drop on top of the magazine or remain held to the bolt face by the extractor. Then, when the bolt goes forward, the cartridge will be chambered again!

REMEMBER -- always remove the magazine before clearing the chamber, and visually check to ensure that no cartridges remain in the firearm.

REMOVE A BORE OBSTRUCTION

Firearms which are chambered for small caliber high-velocity cartridges are particularly susceptible to damage from firing when the bore is obstructed. Excess oil, grease, or water may form an obstruction which could cause damage and injury. If you suspect that your rifle may have excess oil, grease or other contaminants in the barrel. Or, if it may have been exposed to humid conditions, which could cause condensation, or to rain or snow, which might have entered the bore, open the bolt and clean out the barrel. Inspect the bore visually to be sure that it is perfectly clear.

A firearm user should recognize that a lodged bullet is a fairly common form of bore obstruction. Therefore, the following information on how a bullet may become lodged in the bore, and how it should be removed, deserves most careful reading and understanding!

1. When firing, a bullet may become lodged in the bore if the cartridge contains no powder, insufficient powder, or the powder fails to ignite and only the primer charge ignites, producing insufficient force to propel the bullet out of the bore.
2. A bullet may also become lodged in the bore when extracting a cartridge from the chamber (unloading). If the bullet is not crimped tightly enough in the cartridge case, the bullet may stick in the bore, with only the case being extracted.

Experience indicates that the two conditions described above occur most frequently With reloaded ammunition.

When either of the above described (1 or 2) situations occur, proceed as follows *with the firearm pointing in a safe direction*:

- a. If the firearm is cocked, move the safety to the "SAFE" position.
- b. Remove the magazine from the firearm.
- c. Retract the charging handle and lock it in the open position. Retracting the charging handle should remove the cartridge case. Be certain the safety is in the "SAFE" position.



- d. Check the chamber to be certain there is no cartridge case in it – if there is, extract it before proceeding with steps (e) and (f).
- e. After making sure the chamber is clear and the magazine is removed, close the bolt, disengage the take down pin, remove the bolt and inspect the bore visually and with a rod as necessary.
- f. If the bore is obstructed, insert a proper size cleaning rod (without a tip or brush) into the bore from the muzzle and dislodge and remove the bullet. If the bullet does not readily dislodge, it may be necessary to lightly tap the handle end of the cleaning rod. If such efforts fail to dislodge the bullet, take the firearm to a gunsmith.
- g. Inspect the bore to be certain it is free of unburned powder particles or any other

DO NOT ATTEMPT TO REMOVE A LODGED BULLET USING A
BLANK CARTRIDGE OR A CARTRIDGE FROM WHICH THE BULLET HAS
BEEN REMOVED, OR BY ANY MEANS OTHER THAN THE USE OF THE
PROPER SIZE CLEANING ROD AND REASONABLE FORCE APPLIED TO THE ROD. BE CERTAIN ALL LOOSE POWDER
HAS BEEN REMOVED FROM THE BORE AND ACTION BEFORE INTRODUCING THE ROD INTO THE BORE.
NEVER TRY TO SHOOT OUT A BORE OBSTRUCTION!

debris. At the same time clean the magazine, the magazine well, and other areas of the mechanism of unburned powder grains.

CLEAR A MALFUNCTION

If you experience a malfunction, study the situation to determine the nature of the malfunction and how best to clear it. Any auto-loading firearm may occasionally malfunction. If it does:

1. Be certain the muzzle is pointed in a safe direction and the safety is in the “SAFE” mode.
2. When attempting to free a jammed cartridge, do not use any type of tool that is likely to act as a “firing pin” and discharge the cartridge should the tool impact on the primer. Never use a cartridge as a “tool.”
3. After clearing a jam, inspect the firearm mechanism to determine if dirt or debris might be the cause of the problem. Excess lubricant or grease can cause cartridges to feed sluggishly. An accumulation of grease, dirt or powder grains in the magazine can contribute to cartridge feeding problems.

4. After clearing a jam, inspect all cartridges that have been removed from the firearm. Safely dispose of any cartridges which are dented or nicked or have bullets that are loose or improperly positioned in the cartridge case.
5. If it appears that the gun and magazine are not at fault and that the jam was caused by the type of cartridge being used, then try another type or brand of cartridge.
6. If the above procedures do not result in a smooth and reliable feeding firearm, do not use the firearm until it feeds cartridges smoothly and reliably. The firearm should be returned directly to POF-USA for repair. Contact TECHNICAL@POF-USA.COM for packing and shipping information.

Another precaution: Form the habit of examining fired cartridge cases from time to time. If fired cases have bulged rims or show splits on any part of the case, stop using that ammunition. If the problem persists with different types of ammunition contact TECHNICAL@POF-USA.COM.

7. If a cartridge or shell is caught between the bolt and receiver, put the safety on "SAFE", retract the bolt using the charging handle, and lock it in the open position using the bolt catch. Remove the magazine; then remove the jammed case.
8. If a fired cartridge case is in the chamber, use a cleaning rod to knock it out.

MINIMIZE MALFUNCTIONS

Auto-loading firearms of all makes and types occasionally malfunction when a cartridge fails to feed from the magazine to the chamber, or when a cartridge (or fired case) fails to properly extract and eject. To minimize the possibility of such occurrences the gun user should:

1. Use ammunition of the correct caliber and type which is loaded to industry specifications. Avoid reloads, remanufactured cartridges, and cartridges that are dirty, corroded, or deformed.
2. Clean and lubricate the gun in accordance with the instructions in this manual and the instructional videos on the POF-USA website.
3. If the mechanism shows signs of not functioning correctly, or if a part is damaged or broken, do not use the firearm. Have it inspected and repaired.
4. Use only high-quality POF-USA magazines and carefully load the magazine. Do not exceed the stated magazine capacity.
5. Do not "ride" the charging handle when chambering a cartridge from the magazine. The bolt should be permitted to snap forward under the full force of the recoil.



spring. If a cartridge does not fully chamber, clear the not fully chambered cartridge using the procedure outlined on page 17. Then try to chamber a second cartridge from the magazine. If the second cartridge is still not chambered completely, the round should be cleared as a jam and inspected for any issues before proceeding with another magazine.

6. To minimize the probability of an unfired cartridge being jammed should it “fall back” onto the magazine, remove the magazine *before* retracting the bolt. When extracting an unfired cartridge, tip the right side of the rifle towards the ground so that gravity will assist the cartridge to fall clear of the ejection port. Always retract the charging handle briskly when extracting a live cartridge. Take care to see that a cartridge is not forcibly ejected against a surface where the primer might be set off.

DISASSEMBLY

1. With the rifle pointing in a safe direction, safety in the “SAFE” position, remove the magazine by pushing the magazine catch button inward to release the magazine, while drawing magazine down.

NOTE: Hammer must be cocked to place the selector in the “SAFE” position. Again, be sure chamber is empty!

2. On the left-hand side of the lower receiver push the rear take down pin to the right. From the right side of the rifle, pull the pin outward until the detent stops any additional travel.



3. Tip the upper receiver forward on the front pivot pin, remove the bolt from the upper receiver.



4. If desired, remove the upper receiver from the lower receiver by pushing the pivot pin on the left side of the lower receiver to the right. Reach to the right-hand side of the lower receiver and pull the pivot pin to the right until the detent stops any additional travel.



5. Lift the upper receiver off the lower receiver.

REASSEMBLY

Again, Be Sure Firearm and Magazines are Completely Unloaded!

1. Reassemble the bolt into the upper receiver:

- a. Turn the upper receiver upside down so that the top of the firearm is pointing toward the ground.
- b. Place the spring retaining key of the bolt into the channel in the upper receiver. Slide the bolt group into the upper receiver in the provided bore.
- c. Once installed make sure that the recoil plate is pushed in before snapping the upper receiver back down on to the lower.
- d. Reinsert the rear take down pin.

Care should be taken not to turn the upper receiver so that the bolt can slide out the back of the upper receiver.

2. Assemble the upper receiver to the lower receiver:

- a. Make sure the hammer is cocked, place the selector on "SAFE", and make sure both the take down pin and pivot pin are pushed completely to the right side of the lower receiver.
- b. Make sure the bolt is all the way forward in the upper receiver.
- c. Put the upper receiver onto the lower receiver and slide the upper receiver all the way rearward against the threaded section for the butt stock.
- d. Push the pivot pin into the receiver until the detent locks in the hole in the pivot pin. Push the take down pin into the receiver until the detent locks in the hole in the take down pin.



BOLT AND RECOIL ASSEMBLY

Disassembly of the bolt and recoil assembly:

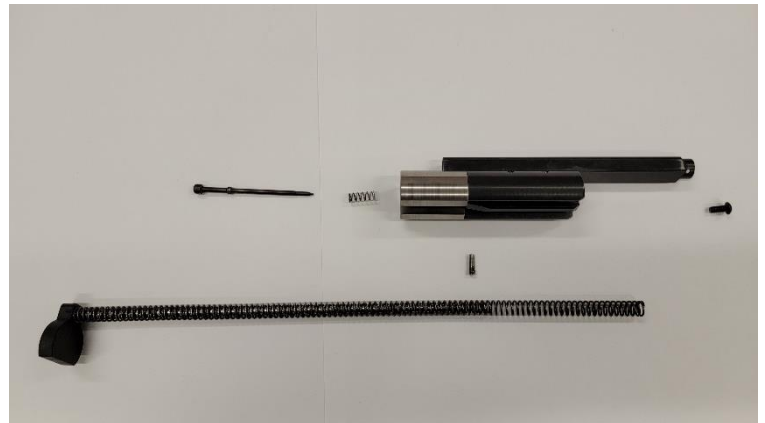
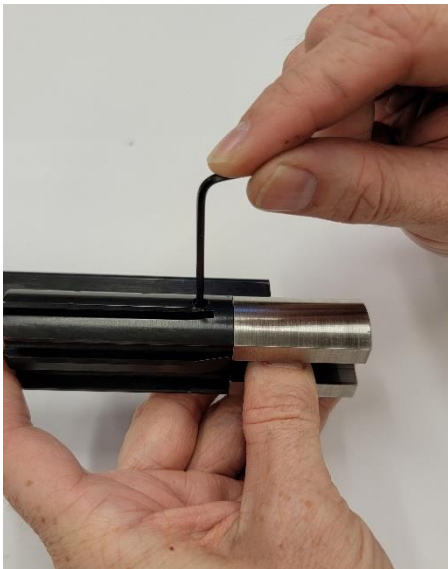


1. Remove the recoil assembly from the top of the bolt by pushing down on the recoil plate until the guide rod protrudes from the end of the spring retainer. While keeping tension down the bolt assembly, un-screw the recoil rod retaining screw. PLEASE NOTE: The springs will be under a significant load upon any compression by hand. It is strongly recommended to point the assembly away from yourself and others when removing the recoil assembly. As always, it is recommended to wear eye protection when handling any firearm or its components.





2. Remove the firing pin by pressing on the hammer strike side. This will take tension off the firing pin retainer. Screw out the firing pin retainer with a 5/64 Hex wrench and then slide the firing pin and firing pin spring out of the rear of the bolt. PLEASE NOTE: Take special care when removing firing pin components. They may shoot out at high speed if improper technique is used.



Reassemble the bolt in reverse order of disassembly.

The bolt group is proprietary to POF-USA and is not interchangeable with other firearms.

HAND GUARD

The hand guard allows the operator to customize their hand guard with the desired rail M-LOK compatible accessories.

CARE AND CLEANING

After each shooting session, at regular intervals, or whenever your firearm has been exposed to sand, dust, extreme humidity, condensation, immersion in water, or other adverse conditions; disassemble, clean and lubricate

Basic Procedures are:

1. Disassemble the firearm as described on pages 21-24.
2. Clean the barrel bore with patches and solvent using a cleaning rod.
3. Remove powder residue from all components and wipe with a clean cloth.
4. Only use a light application of oil on the riding surfaces of the bolt. Excessive oil will attract dust and dirt and may congeal in cold weather possibly interfering with the safe operation and reliable function of the firearm.

WARRANTY POLICIES

- ❖ All POF-USA firearms have a 100% satisfaction guarantee and have a limited lifetime warranty. POF-USA firearms are warranted against defects in material and workmanship for the life of the firearm regardless of ownership. Normal maintenance is not covered by the warranty and it is the responsibility of the owner to assure the weapon is properly maintained. All labor and /or replacement parts at the discretion of POF-USA are free of charge.
- ❖ **Shipping to and from our facilities, government fees, damages caused by failure to perform normal maintenance, sales outside the United States, damages due to high velocity, high pressure, reloaded, remanufactured, or other no non-standard ammunition, consequential or incidental damages and /or expenses, any unauthorized repair, modification, misuse, abuse, or alteration of the product is not covered by this warranty.**

- ❖ In order to help us assist you better, please register your firearm through our Warranty Registration online form at <http://pof-usa.com/warranty-registration/>
- ❖ For further technical assistance or to obtain warranty information on your POF-USA firearm, email technical support at TECHNICAL@POF-USA.COM

Altering or modifying parts is dangerous and will void the warranty. Your POF-USA firearm was manufactured to perform properly with the original parts as designed. It is your responsibility to make sure any parts you install are made for this firearm, installed correctly, and that neither the originals nor the replacement parts are altered or changed. Your POF-USA firearm is a complex precision tool with many parts that must operate correctly with other parts in order to maintain proper and safe operation. Putting your firearm together improperly or with incorrect or modified parts can result in a damaged firearm, serious personal injury, or death to you and/or others through malfunction. Always have a qualified armorer or gunsmith work on your POF-USA firearm systems or other firearms.

MODEL SPECIFIC (PHOENIX 9MM)

Please be aware of the following:

AMMUNITION

As stated on page 11, POF-USA only recommends the use of factory loaded ammunition made to U.S standards. The use of “+P” ammunition has been tested in this firearm and, if new and factory loaded ammunition, is safe for general operation. Please NOTE: this ammunition will accelerate wear on all components and will not shoot as comfortably as standard ammunition. **POF-USA WILL NOT WARRANTY AND DISCLAIMS ANY RESPONSIBILITY FOR THE USE OF “+P+” AMMUNITION IN THIS FIREARM. THIS AMMUNITION IS NOT REGULATED OR RECOGNIZED AS AN OFFICIAL DESIGNATION AND THERE IS NO CONTROLLED SPECIFICATION TO WHICH IT IS MANUFACTURED.**

Through our relentless testing of this firearm and magazine, POF-USA has concluded that steel cased 9MM will only function reliably when cleaned thoroughly before use in the firearm. From the factory, most steel cased ammunition is coated with a corrosive protective coating to enhance the lifespan of the cases in storage and in shipping. This coating is known to cause friction issues when inside the magazine, thus causing erratic feeding. User experience may vary from our testing.

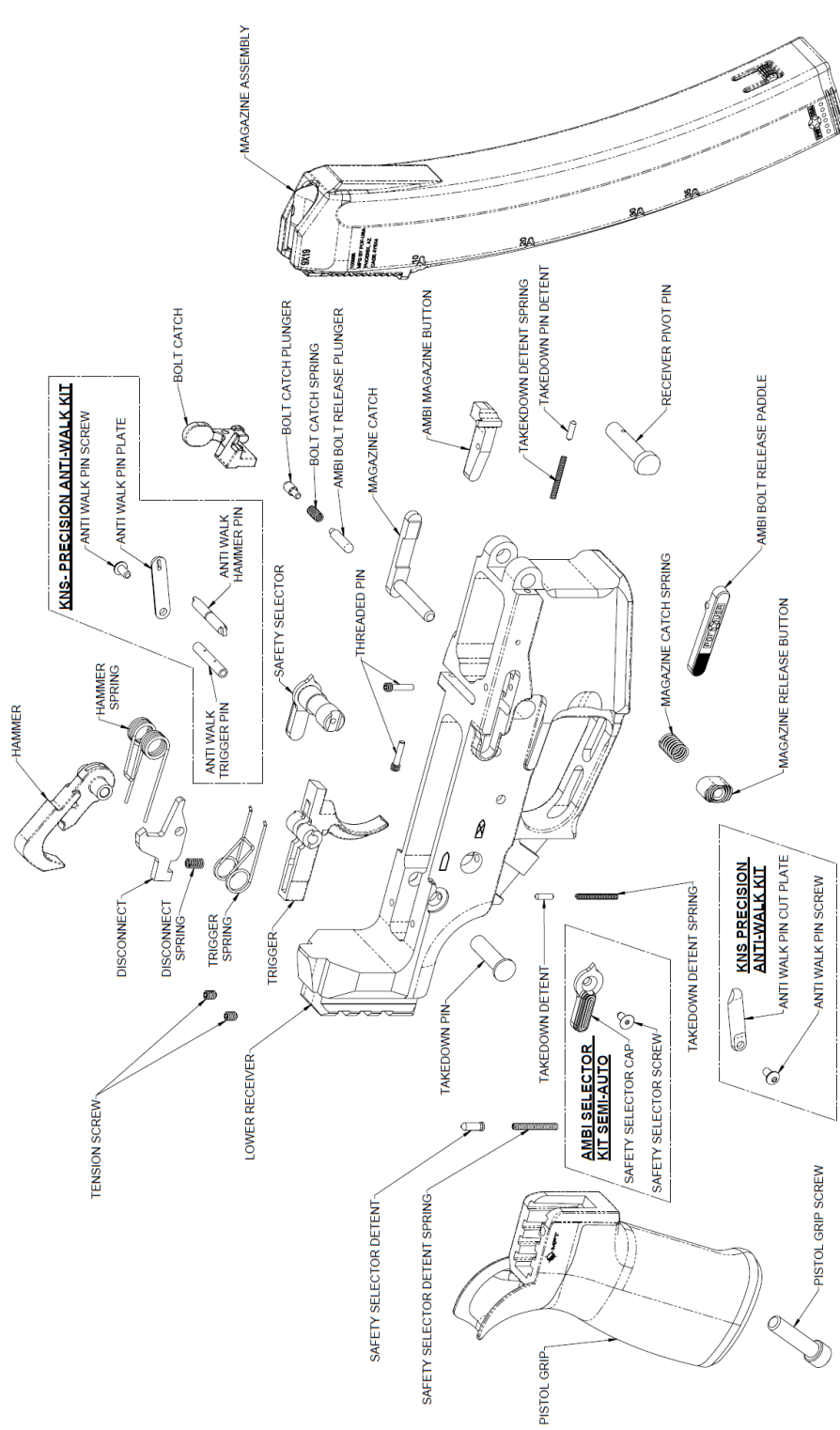
TRIGGER

POF-USA ONLY GUARANTEES THE USE OF THE **FACTORY SUPPLIED TRIGGER ASSEMBLY** WITH THIS FIREARM. THE USE OF ANY OTHER NON POF-USA APPROVED TRIGGER WILL NOT BE GUARANTEED BY THE WARRANTY. INCLUDING, BUT NOT LIMITED TO, OTHER NON-DESIGNATED POF-USA DROP IN TRIGGERS, AND ANY TRIGGER MANUFACTURED BY ANOTHER OEM.



DIAGRAMS

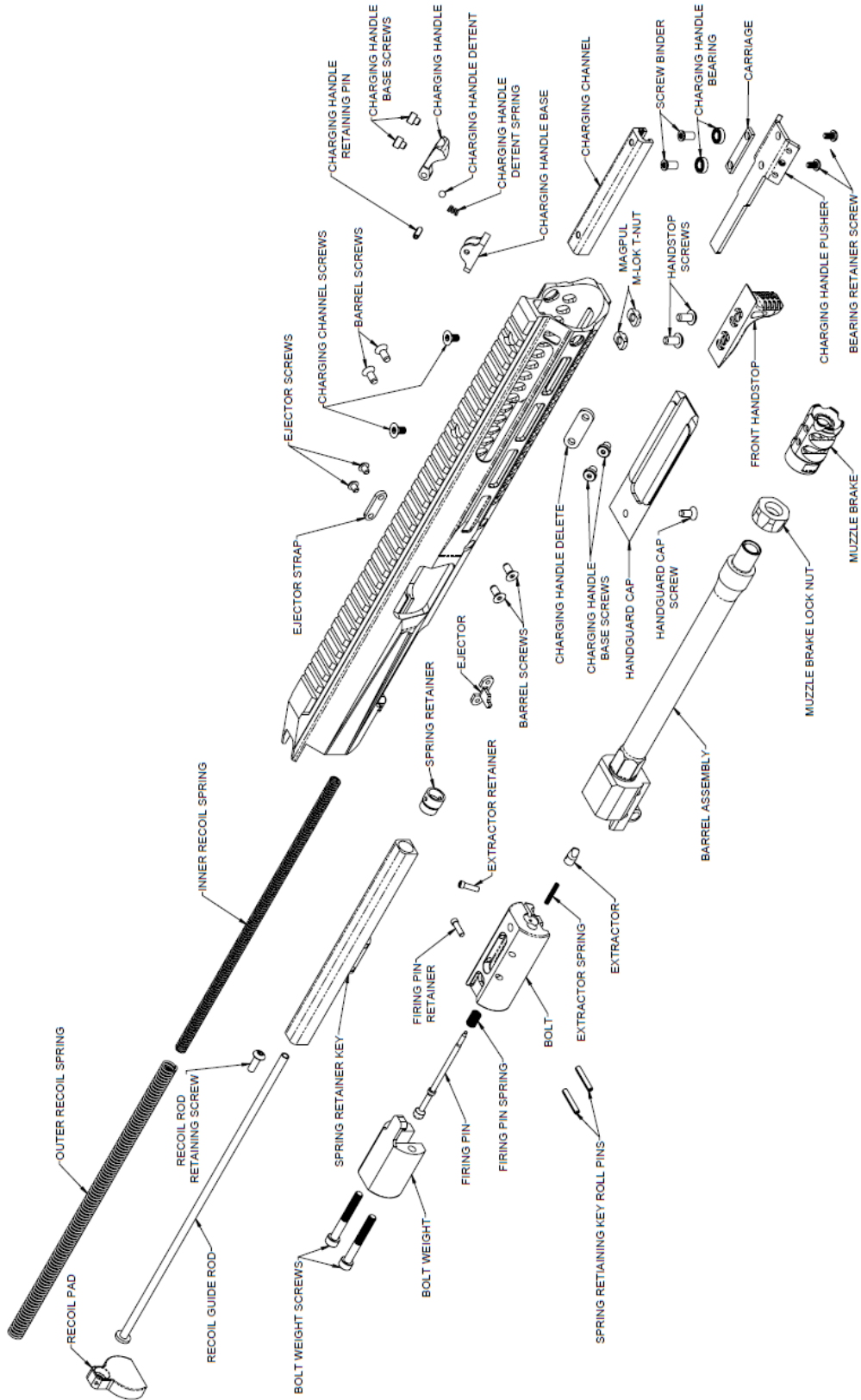
The following diagrams are provided to help you identify individual parts in your firearm.



POF-USA P-SG LOWER RECEIVER COMPONENTS BY DESCRIPTION

REV DATE: 01/03/2022





REV DATE: 12/13/2021

POF-USA P-SG UPPER RECEIVER COMPONENTS BY DESCRIPTION





TRUE. AMERICAN. ORIGINAL.

Patriot Ordnance Factory

Made in the U.S.A.

sales@pof-usa.com | POF-USA.com | 623-561-9572



PHO



/POFUSA



/POFUSA



/PATRIOTORDNANCE



/USER/POFUSA