

Bushnell®



BINOCULAR INSTRUCTION MANUAL

For All Basic Models

10 x 42 Xterra



PARTS GUIDE

Ocular Lens	A
Center Focus Knob	B
Eyecups	C
Tripod Adapter Socket*	D
Objective Lens	E
Diopter Adjustment Ring**	F

* under cap (compact models are not tripod adaptable)

** no diopter ring on some models-rotate entire right eyecup

Thank you for purchasing your new Bushnell® binoculars.

This manual will help you optimize your viewing experience by explaining how you can adjust the binocular to your eyes, and how to care for this instrument. Read the instructions carefully before using your binocular.



NEVER LOOK DIRECTLY AT THE SUN WITH YOUR BINOCULAR, AS IT MAY CAUSE SERIOUS DAMAGE TO YOUR EYES

EYECUP ADJUSTMENT

Your Bushnell binocular is fitted with eyecups that provide a comfortable view of the full image and help to exclude extraneous light. If you need to wear glasses when using binoculars, leave the eyecup in the “down” position (or, for models with fold down style eyecups, fold them down) (Fig. 1, next page). For use without eyeglasses or sunglasses, twist up the eyecups (or, for models with fold down style eyecups, simply leave them up) (Fig. 2). This will place your eyes farther from the binocular’s ocular lenses, at the correct eye relief distance, allowing you to see the full field of view.

IPD (INTERPUPILLARY DISTANCE) ADJUSTMENT

The spacing between the pupils of your eyes, called “interpupillary distance,” varies from person to person. To match your binoculars to your IPD or “eye to eye” width:

1. Point them at a white wall or blank area of the sky. Hold the binoculars and view through them as you normally would. Don’t worry about focus yet.
2. Grasp each side of the binocular firmly. Move the left and right sides closer together or farther apart (Fig. 3, next page) until you see a single image with no shaded areas.

FOCUS AND DIOPTRER ADJUSTMENT

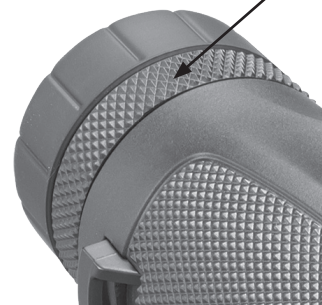
1. Adjust the eyecups and IPD as described in the previous sections.
2. Using the lens cap (if supplied) or your hand, cover the objective lens on the right side of the binocular.
3. Using the center focus knob, focus on a distant object with fine detail (e.g., brick wall, tree branches, etc) until it appears as sharp as possible when viewed through the left side of the binocular.
4. Uncover the objective lens on the right side, and cover the left objective lens while continuing to view the same object.
5. Rotate the diopter adjustment ring (**NOT the center focus knob**) located directly below the right eyecup (Fig. 4) to bring the object into focus in the right side of the binocular. *Note: on some models, there is no ring; rotate the entire right eyecup to adjust diopter.* Avoid over-turning or forcing the diopter mechanism. If you are unable to bring the object into focus for your right eye by adjusting the diopter ring/eyecup, make sure the left side is still in focus (repeat steps #2-4 if necessary). The diopter adjustment essentially provides “fine focus” on one side of the binocular (right only) to allow for slight differences in the vision of your left and right eyes.



Fig. 3 Interpupillary Distance (IPD) Adjustment



Fig. 4 Diopter Adjustment Ring



- Your binocular should now be adjusted for your eyes. Focusing for any distance can now be done simply by turning the center focus knob. Make a note of your diopter setting (position of plus and minus marks on diopter ring relative to index mark on binocular near the ring) for future reference in case the ring is moved accidentally or by another person using your binocular.

NECKSTRAP ATTACHMENT

To attach the neckstrap, thread the ends of the neckstrap through the strap lug (**Fig. 5**) on each side of the binocular, then back through the plastic buckle on the strap (**Fig. 6**). Adjust the position of the binoculars on your chest as they hang around your neck to your preference, by changing the length of the strap section which passes through the strap channel and buckle by an equal amount on each side. If you prefer to use an aftermarket strap that has metal O-rings, attach them to a plastic zip tie placed on the strap lugs rather than installing them directly on the lug, to avoid damaging the finish on the binocular via contact with the rings.



Fig. 5 Strap Lug



Fig. 6 Strap & Buckle

TRIPOD MOUNTING (select full size models only, not available on compact models)

To attach the binocular to a tripod or monopod (feature provided on some full size models), unscrew or pull off (varies with model) the cap which covers the threaded (1/4-20UNC) socket at the far end of the center hinge (**Fig. 7**), and set it aside in a safe place. Use a compatible binocular tripod adapter accessory (90° angle bracket), such as the Bushnell #161002CM, to attach your full size binocular on any standard tripod in a horizontal position, to provide a stable image during prolonged viewing, or when using high power models.



Fig. 7 Tripod Socket Cap

ANTI-REFLECTIVE LENS COATINGS (FULLY COATED/MULTI-COATED)

All models have lenses with a microthin layer of anti-reflective (AR) coating on every air-to-glass surface. Selected models have multiple layers of these AR coatings on one or more surfaces ("multi-coated"), providing increased light transmission for a brighter, clearer image. It's important to take proper care of your binocular to avoid damage to these lens coatings that could be caused by improper cleaning methods.

CLEANING

1. First, blow or brush away any dust or debris on the lens (using "canned air" or a soft lens brush).
2. To remove dirt or finger prints, clean with the supplied soft storage bag (made of washable micro-fiber cloth), rubbing in a circular motion. Use of a coarse cloth (including paper towels) or unnecessary rubbing may scratch the lens surface and eventually cause permanent damage. The included storage bag/micro-fiber cloth is ideal for the routine cleaning of your optics. Simply breathe lightly on the lens to provide a slight amount of moisture, then gently rub the lens with the micro-fiber cloth.
3. For a more thorough cleaning, photographic lens tissue and photographic lens cleaning fluid or isopropyl alcohol may be used. Always apply the fluid to the cleaning cloth - never directly on the lens.
4. To prevent potential damage to the optical coatings on the binocular's lens surfaces, never use household window cleaning liquids. Avoid using facial tissue or clothing that may have fibers which can be abrasive and hold oils or dirt.

CARE OF THE OPTICS

1. Your Bushnell binocular will provide years of trouble-free service if it receives the normal care you would give any fine optical instrument.
2. Avoid sharp impacts. Set the binocular down gently on hard surfaces.
3. Tug on the strap after attaching, making sure it is securely fastened to the binocular before placing it around your neck.
4. Store your binocular in a cool, dry place whenever possible.
5. Not all basic Bushnell binocular models are waterproof. Check the features listed on the product packaging to verify if your model is waterproof. Non-waterproof models should not be exposed to direct sources of moisture such as rain, and can be damaged by submersion in water of any depth for any length of time. Damage from exposure to water is not covered by the product's warranty for non-waterproof models. Waterproof models are tested for water resistance to IPX7 standards.



Products manufactured on or after April 2017 are covered by the Bushnell Ironclad Warranty. The Ironclad Warranty is a full lifetime warranty that covers the lifetime of this Product. Each Product has a defined lifetime; lifetimes can range from 1 to 30 years. This Product's lifetime can be found at the website listed below and/or on the Bushnell webpage specific to this Product.

We warrant that this Product is free from defects in materials and workmanship and will meet all represented performance standards for the lifetime of this Product. If this Product isn't working properly due to a covered defect, we will, at our option, either repair or replace it and ship it back to you at no charge. This warranty is fully transferable and does not require a receipt, warranty card, or product registration. This warranty does not cover the following: electronic components; batteries; cosmetic damage; damage caused by failing to properly maintain the product; loss; theft; damage as a result of unauthorized repair, modification, or disassembly; intentional damage, misuse, or abuse; and ordinary wear and tear. This Warranty will be void if the date stamp or other serialization codes have been removed from the Product.

To view the full warranty and find details on how to request service under the warranty, go to our website at www.bushnell.com/warranty. Alternatively, you can request a copy of the warranty by calling us at 1-800-423-3537 or writing to us at one of the following addresses:

IN U.S.A. Send To:

Bushnell Holdings, Inc.
Attn.: Repairs
9200 Cody
Overland Park, Kansas 66214

IN CANADA Send To:

Bushnell Holdings, Inc.
Attn.: Repairs
140 Great Gulf Drive, Unit B
Vaughan, Ontario L4K 5W1

For products purchased outside the United States or Canada please contact your local dealer for applicable warranty information.

This warranty gives you specific legal rights.
You may have other rights which vary from country to country.

©2020 Bushnell Outdoor Products

Bushnell®

©2020 Bushnell Outdoor Products
Bushnell,™, ®, denote trademarks of Bushnell Outdoor Products
www.bushnell.com
9200 Cody, Overland Park, KS 66214