



AMERICAN TACTICAL

AR FAMILY | INSTRUCTION MANUAL

.223 / 5.56 / 300 BLACKOUT / 6MM ARC / .410 GAUGE



OMNI HYBRID MAXX 6MM ARC



MILSPORT 5.56 P3P



MILSPORT AR-15 .410 SHOTGUN



ALPHA-15 AR

ATTENTION: BEFORE REMOVING THE FIREARM FROM ITS PACKAGE, READ AND UNDERSTAND WARNINGS, FULL INSTRUCTIONS, AND PRECAUTIONS IN THIS OWNER'S MANUAL.

INDEX

AR FAMILY

Warnings.....	3
Safety Rules.....	4-5
Instruction for Use & Ammunition.....	6-8
Assembly.....	9
Loading.....	10
Firing & Decocking.....	11
Unloading, Misfires, Disassembly.....	12
Cleaning & Maintenance.....	13

.410 AR

.410 Upper Instructions.....	14-17
Parts Schematic.....	18-19

ALPHA-15

Warnings.....	21
Instruction for Use & Ammunition.....	22-24
Lower Receiver Features.....	25

AR FAMILY CONTINUED

Troubleshooting Tips.....	36-27
Service Instructions.....	28-27
Notes	28-30
Warranty & Registration Information.....	31
Product Registration Card.....	32

WARNINGS

The complete and full knowledge of your firearm may help you to avoid serious injuries due to lack of safety devices. Read the entire manual and learn the proper use of the gun without live ammunition. It is important that you understand the proper use of this product. The life of the people close to you may depend on your safety. If the manual is not clear, please contact the dealer where you bought the gun or call the distributor or the manufacturer by using the contact information provided within this manual.

American Tactical is not responsible for damage to objects caused by misuse of the gun or for injuries to persons or animals, or in case of death, caused voluntarily or involuntarily by the gun user. American Tactical is not responsible for injuries caused by poor maintenance, misuse of the gun, unauthorized or improper modifications. American Tactical declines responsibility for the indirect consequences of any injuries and/or death of persons or animals, damage to objects caused by use of the gun or by primer explosion, by bullet's ricochet, or unsafe loading practices and/or procedure.

OMNI HYBRID

The Omni Hybrid Lower is not designed to be used with 50 BMG. DO NOT attempt to use this caliber. This will void any and all warranties. We specifically disclaim for any damage or injury whatsoever occurring in connection with the aforementioned.

ALPHA-15

Due to its design, the Mil-Spec dimension polymer buffer tube cannot be removed from the lower receiver. WARNING! The rear buffer tube is permanently fixed to the lower and is not to be separated or it voids the warranty. Castle nut is factory torqued. DO NOT tighten the castle nut.



American Tactical Recommends the use of all Lucas Oil Outdoor Line Cleaning and Lubricants to maintain your firearms optimal performance.

**AMERICAN TACTICAL
PROUDLY USES
LUCAS OIL OUTDOOR
PRODUCTS
FOR ALL OF OUR FIREARM
MAINTENANCE NEEDS**



A Lucas Oil Lubrication sample is included with all firearm purchases!

SAFETY RULES

1. Read the instructions carefully before use. Reading the manual and a careful examination of the firearm are fundamental to avoiding any kind of problem.
2. Be aware that you are handling a firearm; therefore your knowledge and behavior may affect your life and people close to you.
3. Firearms and ammunitions must be kept in different places.
4. ALWAYS keep firearms and ammunition out of reach of children.
5. Store the firearm in a clean, dry and airy place after use to avoid rust in mechanical parts that may cause serious problems in functioning after a period of inactivity.
6. The firearm must ALWAYS be stored unloaded, ALWAYS check that the chamber is empty.
7. Keep away from open flame or heat sources.
8. NEVER leave a loaded firearm unattended.
9. NEVER leave the firearm loaded and with a closed bolt carrier.
10. ALWAYS point the firearm in a safe direction, and handle as if it was loaded, especially when handing to another person. NEVER take someone's word that it is unloaded. Check that the firearm is unloaded before laying it down or handing it to someone else.
11. After use, clean and lubricate the inside of the barrel with appropriate oil. Avoid grease or oil buildup that can cause excessive pressure and result in serious personal injury. Inspect the barrel and chamber to make sure there are no obstructions in the bore. Remove any oil residue with rod and dry patch before shooting.
12. Accumulation of rust in the barrel can cause excessive pressure resulting in serious injury and may cause the barrel to explode. A rusted, pitted, or eroded barrel should be replaced.
13. Wash hands thoroughly after shooting and handling firearms to remove any unwanted residues.
14. ALWAYS keep the firearm unloaded when transporting it from home to shooting areas and check that the chamber is empty.
15. NEVER run with a loaded firearm, don't cross any obstacle (fences, water courses, etc.) or walk where there is any possibility of slipping or falling without having your firearm unloaded and in safe condition.
16. DO NOT smoke while handling, loading, or shooting any ammunition, especially black powder. Keep black powder in a closed container at all times, reclosing the container after every use.
17. NEVER drink alcoholic beverages or take any drugs before or during shooting, as this not only constitutes criminal disregard for your safety and that of others, but will seriously impair your judgment and vision. NEVER use a firearm while you are taking medication unless you have checked with your doctor to ensure your ability to handle the firearm safely.

18. DO NOT rest your finger on the trigger until you are ready to shoot. Keep the safety on until you are ready to safely shoot at an intended target (see safety features).
Note: safety devices on firearms are extras, and are not a substitute for safe handling procedures.
19. ALWAYS wear and encourage those around you to wear ear protection when shooting, especially on a range, as repeated exposure to the noise can cause permanent hearing loss.
20. ALWAYS wear protective shooting glasses to protect your eyes from injury by firearm powder, gas, lubricant, dirt, metallic particles, carbon residue, sparks or other debris.
21. Use exclusively factory loaded ammunition of the caliber specified on the firearm barrel. Use of incorrect ammunition may cause serious injury.
22. Before shooting ALWAYS check to ensure that the barrel is free of obstructions.
23. When selecting a place to shoot, ALWAYS be absolutely sure of your target and the area behind it before you touch the trigger, making sure there is an adequate backstop which will stop and contain bullets. A bullet can travel through or past your target for several miles. If you have any doubt, DO NOT shoot.
24. Keep all bystanders behind you. Standing beside a shooter is not a safe position. Make sure all other shooters and bystanders are well away from the ejection port.
25. NEVER shoot against a solid surface or into a pool of water. The projectiles could ricochet in any direction. Don't shoot up into the sky.
26. NEVER force a jammed action. It could cause an explosion or uncontrolled discharge of the round and consequent injury.
27. In case of misfire, manually extract the cartridge from the chamber. If firearm fails to fire when trigger is pulled, as a result of slow primer ignition (hang fire), keep muzzle pointed downrange for a minimum of 30 seconds. If the round does not fire, remove the magazine, clear the firearm and examine the ejected, unfired cartridge. If the indent from the firing pin is off center, light or absent, take the firearm to a competent gunsmith. If the indent appears normal compared to the other rounds, assume it is a faulty round. Separate from other cartridges, reload and continue shooting.
28. DO NOT attempt to re-use damaged or faulty cartridges.
29. NEVER modify any parts of your firearm. Any alteration may cause serious personal injury and voids the warranty.
30. Only a qualified gunsmith may service the firearm for repair or serious maintenance.

AMERICAN TACTICAL DECLINES ANY RESPONSIBILITY FOR MISUSE OF THE FIREARM.
IN CASE OF ALTERATION OF THE FIREARM, AMERICAN TACTICAL DECLINES ANY CIVIL AND PENAL
RESPONSIBILITY AND WILL NOT REFUND ANY DAMAGE.

THE USER IS RESPONSIBLE FOR INJURIES OR DAMAGES CAUSED TO HIM OR TO OTHER PERSONS.
COMPLETE KNOWLEDGE OF YOUR FIREARM CAN MAKE THE DIFFERENCE.

QUALITY INSPECTION

Every firearm is thoroughly inspected for function and cosmetic blemish prior to shipment.

INSTRUCTIONS FOR USE

ATTENTION: American Tactical uses only Mil-Spec parts in the production of our lower receiver. Receiver buffer tube threads are manufactured to military specifications. Use of other than Mil-Spec parts may not perform up to American Tactical's standards and may void warranty.

AMMUNITION

For best performance of the Omni Hybrid and MilSport we recommend the use of quality ammunition high velocity and no reloads

Please allow 100-150 rounds for initial "Break-In" period *OMNI 410 Break-In is 500

NOTICE

WE SPECIFICALLY DISCLAIM RESPONSIBILITY FOR ANY DAMAGE OR INJURY WHATSOEVER OCCURRING IN CONNECTION WITH, OR AS THE RESULT OF, THE USE OF FAULTY, OR NONSTANDARD, OR "REMANUFACTURED" OR HAND LOADED (RELOADED) AMMUNITION, OR OF CARTRIDGES OTHER THAN THOSE FOR WHICH THE FIREARM WAS ORIGINALLY CHAMBERED.

- Death, serious injury, and damage can result from the use of wrong ammunition, bore obstructions, powder overloads, or incorrect cartridge components.
- Use only ammunition specifically recommended for your firearm. This is specified on the barrel.
- Use only high quality original factory manufactured ammunition.
- DO NOT use ammunition loaded with non-jacketed lead projectiles unless using 22LR caliber.
- Your firearm has been designed for ammunition of a specific caliber-DO NOT alter the barrel, chamber or caliber for which your firearm was designed.
- Be sure you NEVER mix ammunition.
- Firearms may be damaged, and serious injury to the shooter or others may result from any condition causing excessive pressure inside the chamber of a barrel during firing. Excessive pressure can be caused by an obstruction in the barrel, propellant powder overloads, or by the use of incorrect or defectively assembled cartridges. In addition, the use of a dirty, corroded or damaged cartridge can lead to a burst cartridge case and consequent damage to the firearm and personal injury from the sudden escape of high pressure propellant gas within the firearm's mechanism.
- Oil bore solvents and other lubricants shall be removed from the bore and chamber prior to loading and firing your firearm.
- IMMEDIATELY stop shooting and check the barrel for possible obstruction when ever:
 - You have difficulty in, or feel unusual resistance in chambering a cartridge.
 - A cartridge misfires (does not go off).
 - The mechanism fails to extract a fired cartridge case.
 - Unburned grains of propellant are discovered in the mechanism.
 - A shot sounds weak or abnormal.
 - In such cases it is possible that the bullet is lodged part way down the barrel. Firing a subsequent bullet into the obstructed barrel can damage the firearm and cause serious injury to the shooter or bystanders.

- Bullets can become lodged in the barrel if:
 1. The cartridge has been improperly loaded without propellant powder, or if the powder fails to ignite. (Ignition of the cartridge primer alone will push the bullet out of the cartridge case, but usually does not generate sufficient energy to expel the bullet completely from the barrel).- A cartridge misfires (does not go off).
 2. The bullet is not properly seated tightly in the cartridge case. When such a cartridge is extracted from the chamber without being fired, the bullet may be left behind in the bore at the point where the rifling begins. Subsequent chambering of another cartridge may push the first bullet farther into the bore.
 3. If there is any reason to suspect that a bullet is obstructing the barrel, immediately unload the firearm and look through the bore. It is not sufficient to merely look in the chamber. A bullet may be lodged some distance down the barrel where it cannot easily be seen. If a bullet is in the bore, DO NOT attempt to shoot it out by using another cartridge, or by blowing it out with a blank or one from which the bullet has been removed. Such techniques can generate excessive pressure, damage the firearm and cause serious personal injury. Remove the bullet with a cleaning rod, a wood or brass dowel (use hand pressure only, NEVER "hammer" a bullet lodged in the bore). Clean any unburned powder grains from the bore, chamber and mechanism before resuming shooting. If the bullet cannot be dislodged by tapping it as referenced above, then take the firearm to a gunsmith.
 4. Dirt, corrosion, or other foreign matter on a cartridge can impede complete chambering and may cause the cartridge case to burst upon firing, The same is true of cartridges which are damaged or deformed.
 5. DO NOT oil cartridges, and be sure to wipe the chamber clean of any oil preservative before commencing shooting. Oil interferes with the friction between the cartridge case and chamber wall that is necessary for safe functioning, and subjects the firearms to stress similar to that imposed by excessive pressure.
 6. Use lubricants liberally on the moving parts of your firearm. Avoid excessive spraying of any aerosols. Spray can lubricants in particular can penetrate cartridge primers and cause misfires. Some highly penetrative lubricants can also migrate inside cartridge cases and cause deterioration of the propellant powder; on firing, the powder may not ignite. If only the primer ignites, there is a danger that the bullet may become lodged in the barrel.

USE OF RELOADED OR IMPROPER AMMUNITION VOIDS THE WARRANTY

ASSEMBLY

FIGURE 1 - Assemble the upper part of your firearm by pushing the two pins.



FIGURE 2 - Mount the upper of choice by fixing the front pivot pin. Next, lower the upper receiver onto the lower receiver. Make sure the hammer is cocked, or the upper cannot be pushed down onto the lower receiver.



FIGURE 3 - Insert the back locking pin.



NOTE:

THERE ARE SEVERAL "M16" MODELS ON SALE WITH A DIFFERENT FRONT AND REAR PIN. YOU CAN USE THE SPECIAL ADAPTERS SUPPLIED BY ALL MAJOR PARTS SUPPLIERS.

MAKE SURE THAT THE BREECH BOLT IS COMPLETELY INSIDE ITS HOUSING AND DOES NOT PROTRUDE. THE BOLT MUST ALSO BE PUSHED DOWN COMPLETELY WITH THE OPENINGS INTO THE CORRESPONDING NOTCHES.

DO NOT BLANK SHOOT.

LOADING

WARNING: Make sure the firearms in unloaded (cleared chamber, barrel clear of obstructions, and magazine is empty) for inspection and that the safety is in the safe position. Keep muzzle pointed in safe direction and follow all safety procedures at all times. Practice these steps with an unloaded gun or dummy ammo until you are completely familiar and comfortable with the procedures. Use live ammo only when you are prepared to shoot. Always use clean, dry high quality ammunition (of the proper caliber) that meets industry performance standards.

1. Press magazine release and remove empty magazine. (FIGURE 3)
2. Insert the loaded magazine until the magazine catch locks it in position. (FIGURE 4)



FIGURE 4

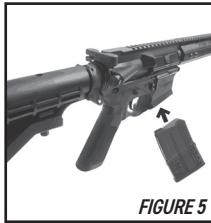


FIGURE 5



Using ATI's Multiloader makes loading your .223, .556, 9mm and .410 ammo a breeze.

1. To load the chamber with the first cartridge, pick up the firearm with your shooting hand and point the muzzle in a safe direction.
2. With the other hand, pull the charging handle all the way to the rear and release. As the bolt travels forward, it inserts the first round into the chamber. The hammer is now cocked. Leave the safety in the safe position until you are ready to fire.

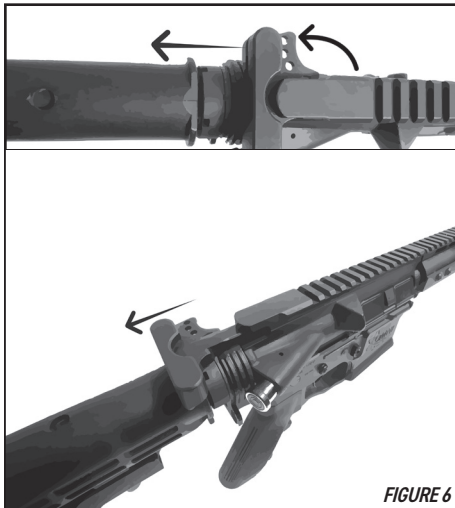


FIGURE 6

WARNING

NEVER PUT YOUR HAND IN FRONT OF THE MUZZLE. ALWAYS LOAD A ROUND INTO THE CHAMBER BY FEEDING FROM THE MAGAZINE.

American Tactical AR-15/M4/M16 are designed so that they are able to fire when the magazine is removed. Therefore, if the magazine is removed from the firearm and there is a loaded round in the chamber, it will fire if the trigger is pulled. After inserting a magazine, ALWAYS test to make sure it is locked in place by applying some removal pressure to the magazine. Your firearms is now ready to fire. Keep your finger out of the trigger guard until you are ready to fire.

FIRING

1. Grasp firearm with one hand on forearm and other hand on grip with index finger resting along outside of trigger guard.
2. Raise firearm and pull buttstock firmly into shoulder.
3. Aim at a safe target.
4. Push the manual safety to the fire position.
5. Squeeze the trigger slowly and maintain the pressure until the round is fired.

YOUR FIREARM LOADS IMMEDIATELY AFTER FIRING. You may continue to fire by pulling and fully releasing the trigger until the magazine is empty

IF YOU WISH TO STOP, after the hammer has been cocked or if you decide to suspend firing

1. Keep the firearm pointed in a safe direction.
2. Remove your finger from within the trigger guard.
3. Place the manual safety in the "SAFE" position and remove the magazine.
4. Pull charging handle rearward to eject any remaining cartridge(s).
5. Make sure that the firearm is unloaded (magazine removed, chamber and barrel cleared)
6. You must be certain there is no cartridge in the chamber or obstructions in the barrel.
7. Remember that any time you release the bolt while a magazine containing cartridges is in the firearm, you will have loaded the firearm and it will be capable of firing.

DECOCKING

1. Decock the hammer by first ensuring the magazine is removed and the chamber cleared.
2. Use the charging handle to draw the bolt carrier assembly 1" to the rear.
3. With the bolt carrier in this position, squeeze trigger, gently release the charging handle and let the bolt carrier close.
4. The hammer is now decocked.

NOTE:

DO NOT APPLY THE MANUAL SAFETY AFTER DECOCKING. WHEN THE HAMMER IS RELEASED THE SAFETY SHOULD NOT ENGAGE. IF IT DOES ROTATE INTO THE "SAFE" POSITION, THE MECHANISM IS DAMAGED UNLESS YOU HAVE A NANO COMPOSITE TRIGGER MECHANISM AND SHOULD BE TAKEN TO A GUNSMITH. DO NOT ATTEMPT TO LOAD OR FIRE.

UNLOADING

1. Point the muzzle in a safe direction.
2. Remove the magazine.
3. Ensure that the chamber is empty by pulling back the charging handle to visually inspect the chamber.
4. Keep firearm pointed in a safe direction.
5. Release the charging handle so that the bolt moves into battery.
6. Push the manual safety to the "fire" position.
7. Squeeze trigger to decock the firearm. The firearm may now be carried safely. Keep the firearm pointed in a safe direction when unloading. Failure to do this can result in serious injury or death.

MISFIRES

Warning: If your firearm gives any indication that it is not performing properly or the operation of your firearm has changed "the way it feels or sounds", stop firing. Make sure the firearm is pointed in a safe direction, unload the firearm and have it inspected and test fired by a qualified gunsmith.

1. If a cartridge fails to fire, wait 30 seconds while keeping the muzzle pointed in a safe direction.
2. Keep your finger off the trigger and out of the trigger guard.
3. Place the manual safety in the "SAFE" position.
4. Remove the magazine.
5. Grasp the charging handle and briskly pull it fully rearward to eject the misfired round.
6. Check the barrel chamber and bore visually for any obstructions. Never look down the barrel from the muzzle end. You must be certain there are no cartridges in the chamber or obstructions in the barrel. Remember that any time you release the bolt while a magazine containing cartridges is in the firearm, you will have reloaded the firearm and it will be capable of firing.

Note: the Forward Assist Plunger does not function in the .22 & .410. In case of feeding failures, retract the charging handle to extract the damaged round.

Warning: Never try to use a misfired cartridge again.

DISASSEMBLY (FIELD STRIPPING)

Release the upper from the back removing the back locking pin, then pull the trigger while gently accompanying the hammer (in order not to dry fire). Keep the firearm pointed in a safe direction when decocking. Failure to do this can result in serious injury or death. **WARNING:** Prior to disassembly, make sure that the firearm is unloaded (magazine removed, chamber cleared, barrel clear of any obstructions, magazine empty) for inspection and that the safety is in the safe position. Keep muzzle pointed in a safe direction and follow all safety procedures at all times. Practice these steps with an unloaded firearm and dummy ammo until you are completely familiar and comfortable with the procedures. Use live ammo only when you are prepared to shoot. Always use clean, dry, high quality ammunition (of the proper caliber) that meets industry performance standards. Always follow the disassembly instructions exactly. Never do anything beyond what you are specifically instructed to do in this manual. Never alter or modify the parts in your firearm. Push the rear receiver pin out of the gun to the right. Do not use excessive force. Push the front receiver pin and disassemble the upper receiver pushing it upwards.

CLEANING

This product should be cleaned after every use and when exposed to dirt, sand, etc. When not in use, clean at least twice per year. A careful and scrupulous ordinary clearing of the firearms is essential to guarantee its safety and long life. We recommend to clean the weapon at least after shooting 200 to 300 rounds. Every time you use your gun it is advised to clean it in order to remove all corroding agents (humidity, powder or lead residues, etc.) which can in time alter a few parts. In order to perform a standard clearing, it is sufficient to utilize a good solvent, cleaning oil, a little brush. For a deeper cleaning, please turn to your local gunsmith.

Warning: Always run the cleaning rods from the chamber end.

1. Verify gun is ON SAFE with the magazine removed and chamber is clear of rounds.
2. Remove receiver pins and disassemble the lower and upper parts
3. Remove the bolt carrier group and charging handle
4. Thoroughly clean the bolt assembly area with a brush and cloth
5. Remove the sliding block and clean the ejector, breech block, bolt, fire control group and barrel breech.
6. Clean the barrel with bore solvent utilizing a flexible cleaning rod inserted through breech end of barrel (where bullets seats). Dry the barrel with cleaning patches; always begin at the chamber. Repeat until barrel is clean.
7. Apply a thin coat of oil to all metal parts
8. Reassemble firearm and check for proper function

MAINTENANCE

- Before any sort of maintenance, make sure the firearm is unloaded
- By "ordinance maintenance" we refer to measures the user should take to keep the gun in good working condition.
- An "extraordinary maintenance" implies the replacement of broken parts and therefore disassembling the gun. In this case, only authorized personnel or a qualified gunsmith should operate.
- Also, a long period of heavy use or inactivity requires an extraordinary maintenance; your gun should be taken to a qualified gunsmith to have the action disassembled for professional cleaning and lubrication.
- Your gunsmith will advise the best lubricant for the good maintenance of your firearm.
- Do not leave oil residues when cleaning and lubricating your firearm.
- Make sure that the mechanism of the weapon functions smoothly; if it starts to stiffen, or if corrosion is starting on some essential parts, you should bring your gun to competent, professional personnel.
- Do not use pure silicon or lanolin.
- When ordering parts, it's important to specify date of purchase, serial number, model, caliber and item reference of the parts needed.
- If the gun has a problem that you cannot fix, DO NOT FIRE it but send it to an authorized center for a check-up. If you try to fix it personally, you may put yourself and the people near you in danger.
- Always pay great attention and handle the gun very carefully, to avoid terrible accidents which may change your life and that of others.



MILSPORT AR-15 .410 SHOTGUN

FEATURES

- 410 GAUGE
- 5RD CAPACITY
- ADJUSTABLE GAS SYSTEM
- PATENTED UPPER RECEIVER
- 1 CYLINDER CHOKE TUBE (OTHER TUBES AVAILABLE)
- SMALL GAME, LARGE GAME, HOME PROTECTION AND TARGET SHOOTING
- 13" MLOK RAIL
- AMERICAN TACTICAL SR-1 DELUXE COMPLETE STOCK WITH HIDDEN COMPARTMENT
- 18" BARREL, DULL HARD CHROME
- POLYMER FRONT AND REAR FLIP SIGHTS

.410 AR UPPER INSTRUCTIONS

INSTRUCTIONS FOR YOUR AMERICAN TACTICAL .410 AR HAS A MIL-SPEC LOWER
AND A PROPRIETARY .410 UPPER.



.410 UPPER INSTRUCTIONS



CAUTION!

The American Tactical .410 Upper is designed to fire 2.5" high brass .410 Gauge Shells ONLY! Some manufacturers 2.5" Shells are actually longer than 2.5" and will not cycle properly.

For optimal performance, American Tactical recommends the use of American Tactical Ammunition, Federal, Hornady, Remington, and Winchester high velocity rounds.

**DO NOT ATTEMPT TO FIRE .45 LONG COLT OR
45-70 GOVERNMENT OUT OF THIS UPPER!**

DISASSEMBLY

To remove the .410 upper, simply remove the rear and front take down pin on the lower receiver. Pull the upper off the lower receiver. Lift the ejector arm to allow the bolt carrier group to slide to the rear of the receiver (FIGURE 7).



FIGURE 7



FIGURE 8
BOLT CARRIER GROUP

PISTON SYSTEM DISASSEMBLY

To disassemble the gas piston system, start by removing the flash hider with an AR-15 armorers tool and using a 3mm allen head wrench to remove 6 screws from the hand guard (FIGURE 9).

Remove the handguard by sliding forward towards the muzzle. Next, use a 1.5mm allen wrench to remove the indexed set screw from the gas bonnet cap (FIGURE 10).

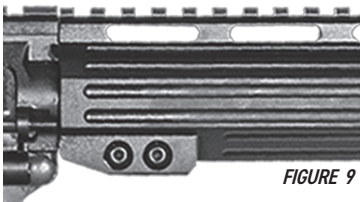


FIGURE 9

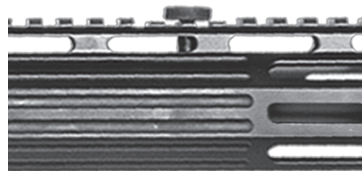


FIGURE 10

- FIGURE 11 - Remove the gas bonnet cap and copper gas washer.
- FIGURE 12 - Grasp the gas bonnet firmly and apply downward pressure towards the receiver until the C-clips are exposed and can be removed by hand.
- FIGURE 13 - Remove the Gas O-ring.

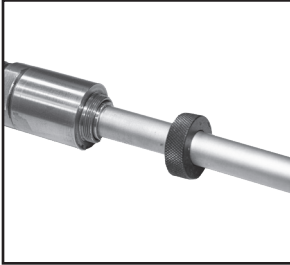


FIGURE 11

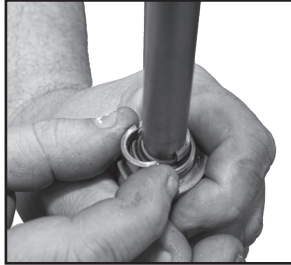


FIGURE 12

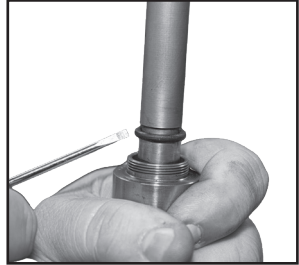


FIGURE 13

After removing C-clips and O-ring, remove the gas system. Take note of the position of the piston drive rods underneath the barrel extension. When reassembling, the drive rods must return to this position.

BOLT CARRIER GROUP DISASSEMBLY

- Punch out firing pin retaining pin (Fig. 13)
- Remove the firing pin (Fig. 14).
- Remove the cam pin (Fig. 15)
- Bolt will slide out (Fig. 16).
- Remove the ejector rod and spring (Fig. 17).



FIGURE 14

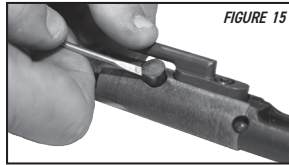


FIGURE 15

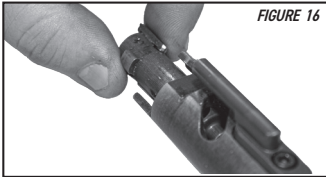


FIGURE 16

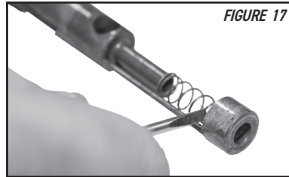


FIGURE 17



FIGURE 18

REASSEMBLY

Follow all steps in reverse taking into account the noted positions of the guides for the piston system and the set screw for the piston end cap. When placing the bolt carrier group (BCG) back into the upper receiver, you must lift the ejector arm so it does not catch on the BCG. See Figure 7 & 8 on page 15.

CLEANING

American Tactical recommends a minimum of 500 rounds shot before a thorough cleaning of the gas system, chamber, and bolt assembly. American Tactical also recommends the use of all Lucas Oil Outdoor Line of products in cleaning and lubricating your .410 upper and all its parts.

PLEASE READ THIS IMPORTANT INFORMATION ABOUT YOUR AR .410 COMPLETE UPPER

To achieve the best performance from your .410 Upper, we advise the use of .410 ammunition that is closed at the top with a roll crimp. Ammunition using a star crimp closure may cause interference with a smooth and unobstructed entry of the first cartridge from the magazine into the chamber. The bolt must be fully closed and locked into the barrel allowing the firing pin to strike the primer when the trigger is pulled.

To insert the first cartridge from the magazine into the chamber, we recommend pulling the charging handle all the way back until it stops, and then quickly release your grip on the handle allowing the bolt to slam forward as it pushes the first cartridge into the chamber. Using the bolt release button may not completely seat the first round using certain type of ammunition.

If the rounds being fired in your .410 AR are not ejecting, or the bolt is not locking to the rear on the last round, the pressure from the round may be lower than your gas system is adjusted to and you will need to increase the gas pressure by rotating the adjustment knob clockwise a few clicks to have the gas system function correctly. Conversely, if the rounds after the first successful chamber and firing are not loading into the chamber the gas system is over pressured and the action is cycling too rapidly and deforming the shell on loading. To resolve this problem, rotate the gas adjustment knob in the counterclockwise direction a few clicks to decrease the gas pressure until the shell loads properly. The .410 AR features an gas adjustment system to allow for fine tuning of the load you are using.

The gas system can be adjusted with the thumb screw located on the top of the hand guard. The adjustment knob is marked with "High Pressure Load" and a directional arrow.

Turning the adjustment knob counterclockwise will siphon gas from the gas system slowing the cycling action. Keeping in mind the large

variance of .410 loads which range from target loads to personal defense rounds, it was necessary for American Tactical to give the system a large range of adjustment. The gas adjustment knob will rotate clockwise and counterclockwise for 2 full turns to account for this. The gas adjustment screw can be completely removed for disassembly of the firearm for cleaning. To completely remove the knob, rotate counterclockwise until it becomes disconnected from the gas bonnet and forend.

TO FINE TUNE THE GAS ADJUSTMENT SYSTEM ON YOUR MILSPORT .410 AR UPPER RECEIVER:

- Rotate the gas adjustment knob in the clockwise direction until it is completely closed. Be careful not to over tighten the screw.
- Next rotate the gas adjustment knob one complete turn in the counterclockwise direction. This should be the mid-point of your adjustment knob where you will begin dialing in the ammunition you are using.

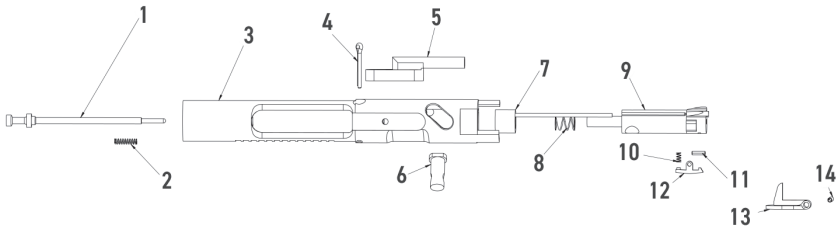
The .410 AR gas adjustment system is factory set to a variety of ammunition used for testing after production. Lower pressure rounds may require an adjustment in the clockwise direction to increase the gas pressure to cycle the action. Rounds such as slugs or personal defense rounds may require an adjustment in the counterclockwise direction to decrease the gas pressure to cycle the action.



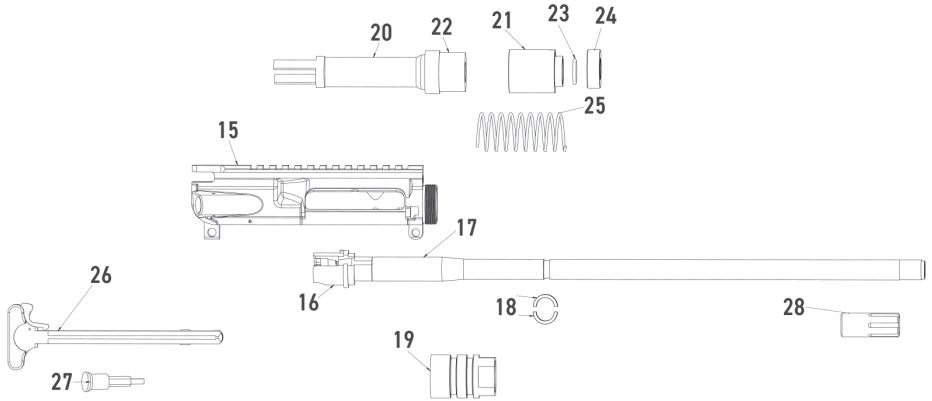
5 Round Patented Magazines



15 Round Patented Magazines



PART#	PART NAME	SKU
1	FIRING PIN	SPAR41FP
2	FIRING PIN SPRING	ATI-410FPRS
3	BOLT CARRIER	SPAR41BC
4	FIRING PIN RETENTION PIN	SPAR15-FPRETIANPN
5	CARRIER GUIDE LUG	ATI-410CGL
6	CAM PIN	SPAR41CAM PIN
7	EJECTOR CYLINDER	ATI-410EJCYL
8	EJECTOR SPRING	SPAR41EJSPR
9	BOLT CARRIER	SPAR41BOLT
10	EXTRACTOR SPRING	SPAR41EXTSPRNG
11	EXTRACTOR PIN	ATI-410EXREPIN
12	EXTRACTOR	ATI-410EXTRACTOR
13	EJECTOR HOOK	ATI-410EJHOOK
14	EJECTOR PIN	ATI-410EHRPIN



PART#	PART NAME	SKU
15	410 UPPER RECIEVER	ATI-410UPPER
16	410 BARREL EXTENSION	ATI-410BBLEXT
17	410 18" BARREL	SPAR41BBL18
18	410 GAS RING RETAINING CLIPS	SPAR41CCLIP
19	BARREL NUT	ATI-BBLNUT
20	410 GAS PISTON	ATI-410GTP
21	410 GAS BONNET	ATI-410BON-P
22	GAS TUBE END	ATI-410GTE
23	410 GAS O-4ING	SPAR41GSORNG
24	410 BONNET CAP	ATI-410BC
25	410 GAS PISTON SPRING	ATI-41PSRING17
26	STANDARD AR CHARGING HANDLE	
27	STANDARD FORWARD ASSIST	
28	410 CYLINDER CHOKE	ATI-410CC

American Tactical Inc.
Summerville, SC

Alpha
15 MULTI



**ALPHA-15 AR
INSTRUCTION MANUAL**



WARNINGS

The complete and full knowledge of your firearm may help you to avoid serious injuries due to lack of safety devices. Read the entire manual and learn the proper use of the gun without live ammunition. It is important that you understand the proper use of this product. The life of the people close to you may depend on your safety. If the manual is not clear, please contact the dealer where you bought the gun or call the distributor or the manufacturer by using the contact information provided within this manual.

American Tactical is not responsible for damage to objects caused by misuse of the gun or for injuries to persons or animals, or in case of death, caused voluntarily or involuntarily by the gun user.

American Tactical is not responsible for injuries caused by poor maintenance, misuse of the gun, unauthorized or improper modifications. American Tactical declines responsibility for the indirect consequences of any injuries and/or death of persons or animals, damage to objects caused by use of the gun or by primer explosion, by bullet's ricochet, or unsafe loading practices and/or procedure.

ALPHA-15

The ATI ALPHA-15 LOWER IS NOT designed to be used with 50 BMG. DO NOT attempt to use this caliber. This will void any and all warranties. We specifically disclaim for any damage or injury whatsoever occurring in connection with the aforementioned.

If you believe your ATI Alpha-15 product needs service, please contact our Customer Service Department at 1-800-290-0065 to obtain a Return Authorization (RA) or email our customer service at customerservice@americantactical.us. All firearms (pistols, rifles, shotguns, and lower receivers) being sent in for service must be registered through the American Tactical website or by mailing in the firearms warranty card to receive warranty services. Firearms that are not registered can be serviced, but will be subject to charge.

Due to its design, the Mil-Spec dimension polymer buffer tube cannot be removed from the lower receiver. WARNING! The rear buffer tube is permanently fixed to the lower and is not to be separated or it voids the warranty. Castle nut is factory torqued. DO NOT tighten the castle nut.

For further service instructions, please see Page 26.

AMERICAN TACTICAL DECLINES ANY RESPONSIBILITY FOR MISUSE OF THE FIREARM.
IN CASE OF ALTERATION OF THE FIREARM, AMERICAN TACTICAL DECLINES ANY CIVIL AND PENAL RESPONSIBILITY AND WILL NOT REFUND ANY DAMAGE.

THE USER IS RESPONSIBLE FOR INJURIES OR DAMAGES CAUSED TO HIM OR TO OTHER PERSONS.
COMPLETE KNOWLEDGE OF YOUR FIREARM CAN MAKE THE DIFFERENCE.

QUALITY INSPECTION

Every firearm is thoroughly inspected for function and cosmetic blemish prior to shipment.

INSTRUCTIONS FOR USE

ATTENTION: ATI Alpha-15 uses only Mil-Spec parts in the production of our lower receiver. Receiver buffer tube threads are manufactured to military specifications. Use of other than Mil-Spec parts may not perform up to ATI Alpha standards and may void warranty.

AMMUNITION

For best performance of the Omni Hybrid and Milsport we recommend the use of quality ammunition high velocity and no reloads

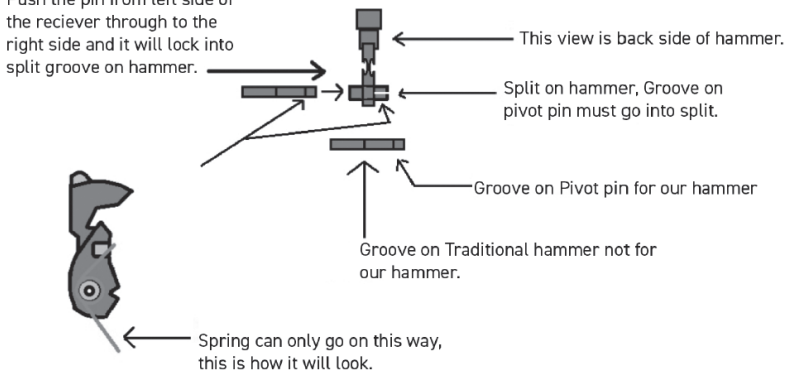
Please allow 100-150 rounds for initial "Break-In" period

NOTICE

WE SPECIFICALLY DISCLAIM RESPONSIBILITY FOR ANY DAMAGE OR INJURY WHATSOEVER OCCURRING IN CONNECTION WITH, OR AS THE RESULT OF, THE USE OF FAULTY, OR NONSTANDARD, OR "REMANUFACTURED" OR HAND LOADED (RELOADED) AMMUNITION, OR OF CARTRIDGES OTHER THAN THOSE FOR WHICH THE FIREARM WAS ORIGINALLY CHAMBERED.

HAMMER MECHANISM

Push the pin from left side of the receiver through to the right side and it will lock into split groove on hammer.



- Death, serious injury, and damage can result from the use of wrong ammunition, bore obstructions, powder overloads, or incorrect cartridge components.
- Use only ammunition specifically recommended for your firearm. This is specified on the barrel.
- Use only high quality original factory manufactured ammunition.
- DO NOT use ammunition loaded with non-jacketed lead projectiles unless using 22LR caliber.
- Your firearm has been designed for ammunition of a specific caliber-DO NOT alter the barrel, chamber or caliber for which your firearm was designed.
- Be sure you NEVER mix ammunition.
- Firearms may be damaged, and serious injury to the shooter or others may result from any condition causing excessive pressure inside the chamber of a barrel during firing. Excessive pressure can be caused by an obstruction in the barrel, propellant powder overloads, or by the use of incorrect or defectively assembled cartridges. In addition, the use of a dirty, corroded or damaged cartridge can lead to a burst cartridge case and consequent damage to the firearm and personal injury from the sudden escape of high pressure propellant gas within the firearm's mechanism.
- Oil bore solvents and other lubricants shall be removed from the bore and chamber prior to loading and firing your firearm.
- IMMEDIATELY stop shooting and check the barrel for possible obstruction when ever:
 - You have difficulty in, or feel unusual resistance in chambering a cartridge.
 - A cartridge misfires (does not go off).
 - The mechanism fails to extract a fired cartridge case.
 - Unburned grains of propellant are discovered in the mechanism.
 - A shot sounds weak or abnormal.
 - In such cases it is possible that the bullet is lodged part way down the barrel. Firing a subsequent bullet into the obstructed barrel can damage the firearm and cause serious injury to the shooter or bystanders.
- Bullets can become lodged in the barrel if:
 1. The cartridge has been improperly loaded without propellant powder, or if the powder fails to ignite. (Ignition of the cartridge primer alone will push the bullet out of the cartridge case, but usually does not generate sufficient energy to expel the bullet completely from the barrel). A cartridge misfires (does not go off).
 2. The bullet is not properly seated tightly in the cartridge case. When such a cartridge is extracted from the chamber without being fired, the bullet may be left behind in the bore at the point where the rifling begins. Subsequent chambering of another cartridge may push the first bullet farther into the bore.
 3. If there is any reason to suspect that a bullet is obstructing the barrel, immediately unload the firearm and look through the bore. It is not sufficient to merely look in the chamber. A bullet may be lodged some distance down the barrel where it cannot easily be seen. If a bullet is in the bore, DO NOT attempt to shoot it out by using another cartridge, or by blowing it out with a blank or one from which the bullet has been removed. Such techniques can generate excessive pressure, damage the firearm and cause serious personal injury. Remove the bullet with a cleaning rod, a wood or brass dowel (use hand pressure only, NEVER "hammer" a bullet lodged in the bore). Clean any unburned powder grains from the bore, chamber and mechanism before resuming shooting. If the bullet cannot be dislodged by tapping it as referenced above, then take the firearm to a gunsmith.
 4. Dirt, corrosion, or other foreign matter on a cartridge can impede complete chambering and may cause the cartridge case to burst upon firing. The same is true of cartridges which are damaged or deformed.
 5. DO NOT oil cartridges, and be sure to wipe the chamber clean of any oil preservative before commencing shooting. Oil interferes with the friction between the cartridge case and chamber wall that is necessary for safe functioning, and subjects the firearms to stress similar to that imposed by excessive pressure.
 6. Use lubricants liberally on the moving parts of your firearm. Avoid excessive spraying of any aerosols. Spray can lubricants in particular can penetrate cartridge primers and cause misfires. Some highly penetrative lubricants can also migrate inside cartridge cases and cause deterioration of the propellant powder; on firing, the powder may not ignite. If only the primer ignites, there is a danger that the bullet may become lodged in the barrel.

USE OF RELOADED OR IMPROPER
AMMUNITION VOIDS THE WARRANTY

TROUBLESHOOTING TIPS (ALL MODELS)

PROBLEM	CAUSE	SOLUTION
LAST ROUND BOLT STOP FAILURE	<ul style="list-style-type: none"> • BOLT TRAVEL NOT SUFFICIENT • TOO HIGH VELOCITY IN RECOIL • DIRT/DEBRIS IN ACTION 	<p>USE AMMUNITION SLIGHTLY FASTER. THE GUN IS TUNED TO SHOOT AMMO 325 M/SEC</p> <p>USE AMMUNITION SLIGHTLY LESS POWERFUL, TOO MUCH VELOCITY MAY COMPROMISE THE CORRECT FUNCTIONING OF THE BOLT STOP. IF YOU HAVE BEEN SHOOTING FOR A WHILE OR USING AMMUNITION WITH EXCESSIVE FOULING, IT MAY BE NECESSARY TO CLEAN THE FIREARM</p>
THE BOLT DOES NOT CYCLE CORRECTLY OR IS STUCK	<ul style="list-style-type: none"> • NOT ENOUGH PRESSURE TO CYCLE • DIRT/DEBRIS IN ACTION - IN BREECH CYCLE • AMMUNITION TOO SHORT OR TOO LONG FOR CHAMBER 	<p>USE HIGHER VELOCITY AMMO. THE GUN IS TUNED TO SHOOT AMMO 1050 FPS (325 M/SEC) OR GREATER. DISASSEMBLE, CLEAN CAREFULLY AND OIL THE UPPER</p> <p>CHECK THE AMMUNITION. CONSIDER DIFFERENT TYPES OF AMMUNITION</p>
FAIL TO FIRE (DNF)	<ul style="list-style-type: none"> • BOLT NOT COMPLETELY CLOSED • AMMUNITION WITH RIM OUT OF TOLERANCE • WEAK HAMMER SPRING • FIRING PIN DAMAGED OR BROKEN 	<p>CAREFULLY CLEAN THE BREECH BOLT, BARREL, AND CHAMBER AREA</p> <p>CHANGE TYPE/BRAND OF AMMUNITION</p> <p>CONTACT OUR SERVICE CENTER</p>
FAILURE TO EXTRACT EMPTY SHELL	<ul style="list-style-type: none"> • DIRTY CHAMBER • DAMAGED CHAMBER • DAMAGED EXTRACTOR • WEAK EXTRACTOR SPRING 	<p>CLEAN CARTRIDGE CHAMBER WITH CLEANING BRUSH</p> <p>CONTACT A PROFESSIONAL GUNSMITH TO POLISH THE CHAMBER</p> <p>CONTACT OUR SERVICE CENTER</p>
THE EMPTY SHELL DOES NOT EJECT (STOVE PIPE)	<ul style="list-style-type: none"> • AMMUNITION WITH RIM OUT OF TOLERANCE • NOT ENOUGH PRESSURE TO CYCLE 	<p>CHANGE TYPE/BRAND OF AMMUNITION</p> <p>USE HIGHER VELOCITY AMMO, REMEMBER THE GUN IS TUNED TO SHOOT 1050 FPS (325M/SEC) OR GREATER</p>

PROBLEM	CAUSE	SOLUTION
THE BOLT STAYS COMPLETELY OPEN	<ul style="list-style-type: none"> • DAMAGED EJECTOR • DIRTY CHAMBER • DAMAGED CHAMBER • WEAK EXTRACTOR SPRING • DIRT/DEBRIS IN ACTION WEAK RECOIL SPRING 	<p>REPLACE MAGAZINE</p> <p>CLEAN CARTRIDGE CHAMBER WITH CLEANING BRUSH</p> <p>DISASSEMBLE AND CAREFULLY CLEAN THE GUN</p> <p>CONTACT A PROFESSIONAL GUNSMITH TO POLISH THE CHAMBER</p> <p>CONTACT OUR SERVICE CENTER</p>
AMMUNITION DOES NOT CHAMBER	<ul style="list-style-type: none"> • INCORRECT AMMUNITION • DIRT/DEBRIS IN ACTION OR CHAMBER 	<p>CHECK THE AMMUNITION AND CHANGE TYPE IF NECESSARY</p>
MAGAZINE IS STUCK	<ul style="list-style-type: none"> • MAGAZINE NOT PROPERLY SEATED • BULLET CRIMP/DESIGN • DIRT/DEBRIS BUILDUP • AMMUNITION IS TOO LONG 	<p>CLEAN THE MAGAZINE THOROUGHLY</p> <p>CHANGE TYPE OF AMMUNITION</p>
FIREARM SHOOTS LOW	<ul style="list-style-type: none"> • REAR SIGHT NEEDS ADJUSTMENT 	<p>LIFT THE REAR SIGHT TO RAISE THE POINT OF IMPACT OR VICE VERSA TO LOWER IT</p>
SHOOTING LEFT OR RIGHT (WINDAGE)	<ul style="list-style-type: none"> • REAR SIGHT NEEDS ADJUSTMENT 	<p>MOVE THE REAR SIGHT THE OPPOSITE DIRECTION OF ERROR (IF POI "POINT OF IMPACT" IS LEFT OF CENTER, MOVE THE REAR SIGHT TO THE RIGHT)</p>

SERVICE INSTRUCTION

Should your firearm, or any component of your firearm require service, kindly ship your **entire** firearm via your chosen carrier. Please ensure postage is paid, we do not accept C.O.D. shipments. Follow the instructions below.

You **MUST** email customer service **FIRST** at customerservice@americantactical.us and provide a detailed description of the problem. Be sure to provide make, model, and serial number of the firearm, as well as the owner's name, address (no P.O. boxes please), and phone number. A customer service agent will contact you normally within one business day. Also, be sure to carefully follow all instructions listed below:

- Make absolutely certain your firearm is unloaded.
- Do not send ammunition with your firearm.
- Remove all accessories from your firearm such as scopes, slings, mounts, etc.
- Ship your firearm in a suitable container, packaging it securely to prevent parts from shifting and/or harm during shipping.
- It is advisable to place your correspondence inside your shipping container when shipping.

SHIPPING ADDRESS

Service address is provided with Return Authorization. If you have any questions, please contact the Product Service Center by email at customerservice@americantactical.us

TO ORDER PARTS FROM THE FACTORY SERVICE CENTER

To order parts, you can fax, phone, mail, or e-mail your order to us at one of the below numbers/addresses.

Phone Number: (800) 290-0065

Fax Number: (888) 320-6830

E-mail Address: customerservice@americantactical.us

Mailing Address: **Service address is provided with Return Authorization.**

Please provide your name, address, city, state, zip, your daytime phone number and e-mail address.

We will need the Model #, Serial #, Gauge/Caliber, Finish, Part # and Part Name.

We accept most major credit cards, money orders, and bank drafts.

SERVICE OUTSIDE OF THE U.S.A.

For American Tactical firearm parts and service requirements outside of the United States, customers are requested to contact the closest American Tactical International stocking dealer/distributor.

WARRANTY SERVICE RETURNS PROCEDURE:

American Tactical provides warranty services, repairs and parts for our imported and domestic brand products. If you believe your American Tactical product needs service, please contact our Customer Service Department at 1-800-290-0065 to obtain a Return Authorization (RA) or email our customer service at customerservice@americantactical.us

All firearms (pistols, rifles, shotguns, and lower receivers) being sent in for service must be registered through the American Tactical website or by mailing in the firearm's warranty card to receive warranty services. Firearms that are not registered can be serviced, but will be subject to charge.

WARRANTY

Defects in workmanship or material & failure to function as designed and specified in this manual

PLEASE REGISTER YOUR FIREARM'S WARRANTY ONLINE AT: <http://www.americantactical.us/warranty.html>

WHAT IS NOT COVERED UNDER WARRANTY?

We will not cover damage of your firearm caused by:

- Failure to provide proper care and maintenance
- Accidents, abuse or misuse
- Barrel obstruction
- Hand loaded, reloaded or improper ammunition
- Unauthorized adjustments, repairs or modification
- Normal wear and tear

WHAT IS EXCLUDED FROM THIS WARRANTY?

American Tactical excludes and will not pay incidental or consequential damages under this warranty. By this we mean any loss, expense or damages other than to repair defects in the firearm or replace the firearm. No implied warranties extend beyond the term of this written warranty.

SERVICES OUTSIDE OF WARRANTY COVERAGE:

Any firearms requiring service outside of the scope of manufacturer warranty, require a minimum \$25 shipping and handling fee for return shipping expenses. This fee must be paid prior to issuance of a RA from Customer Service. It is the responsibility of the owner of the firearm to pay shipping expenses incurred for the firearm to return to American Tactical facility.

Once inspected, you will receive a service quote for the cost of parts and labor for any fees required to service the firearm. No service work will be performed without authorization following issuance of the quote. Should the service quote be accepted, all fees must be paid prior to return of the firearm to the customer. Should the service quote be refused, no work will be performed and firearm will be returned to the customer in the condition in which it was received. If no response to an issued quote is received by American Tactical within 30 days of issuance, the firearm will be returned to the customer in the condition in which it was received.

All payments can be made through American Tactical Customer Service via Credit/Debit Card or by mailing a money order addressed to American Tactical.

ALPHA-15

Due to its design, the Mil-Spec dimension polymer buffer tube cannot be removed from the lower receiver. WARNING! The rear buffer tube is permanently fixed to the lower and is not to be separated or it voids the warranty. Castle nut is factory torqued. DO NOT tighten the castle nut.



AMERICAN TACTICAL

Registration and Warranty Information

Thank you for choosing an American Tactical firearm.

Please Register Online!

Please Visit www.AmericanTactical.us/warranty.html to register your firearm and fill out a brief questionnaire.

If you do not have on-line access, use the back of this card

Registration will be used for product registry in the event your firearm needs service or repair.

American Tactical Lifetime Limited Warranty

American Tactical's LIMITED LIFETIME WARRANTY is in effect for any firearms registered for warranty beginning January 1, 2015. This warranty extends to any and all parts of the firearm as originally sold by American Tactical, but does not extend to firearms altered after their original purchase, firearms damaged through abuse, misuse or lack of proper care and maintenance or firearms used other than for their legal intended purposes. If a firearm cannot be repaired, American Tactical will replace it with a brand new identical firearm. If a replacement firearm identical to the returned firearm is not available, American Tactical will replace it with a firearm of equal value to be determined at our discretion. The American Tactical LIMITED LIFETIME WARRANTY does not allow for monetary compensation for firearms purchased by the end user at the retail level. Any and all claims for monetary return must be addressed with the retail location from which the end user purchased the American Tactical brand domestic or imported firearm and will be subject to the terms and conditions of the retail locations returns policies.

American Tactical is not liable for any returns or claims policies of independent retailers selling American Tactical

brand domestic or imported products.

All firearms registered prior to January 1, 2015 are still subject to the previous 2 Year American Tactical Warranty policy. Once expired, firearms registered prior to January 1, 2015 will be subject to the policy detailed below in the section labeled SERVICES OUTSIDE OF WARRANTY.

NOTE: All American Tactical Omni Hybrid and Milsport AR receivers have a lifetime warranty regardless of registration date.



American Tactical Product Registration Card

Contact Information

First Name: _____
Last Name: _____
Address: _____

City: _____
State: _____ Zip: _____
Phone: _____
Email: _____

Purchase Information

Date Purchased: _____
Place of Purchase: _____
Make: _____
Model: _____
Serial Number: _____
Purchase Price: _____
Color / Finish: _____
Caliber / Gauge: _____
Magazine Capacity: _____

Additional Information

Gender: Male Female Prefer Not to Answer

Marital Status: Single Married

Date of Birth: ____ / ____ / ____

Occupation: _____

Including yourself, what is the total number of people living in your household? _____

Your Level of Education:

- Some High School
 Completed High School (or equivalent)
 Some College
 Associate's College Degree
 Bachelor's College Degree
 Master's College Degree or Higher

Number of Firearms you Own: _____

What are your Household Shooting Interests?

- Waterfowl Trap / Skeet
 Upland Birds Sporting Clays
 Turkey Target
 Big Game Plinking
 Small Game Home Defense

This ATI Firearm will be used for (Fill all that Apply):

- Waterfowl Gun Collection
 Big Game Sporting Clays
 Small Game Target
 Trap Plinking
 Skeet Home Defense
 Other

Number of ATI Firearms you own: _____

NOTICE: All information on this form is confidential and will not be sold or given to any third parties.

Additional Notes:



AMERICAN TACTICAL

Please Visit www.AmericanTactical.us/warranty.html to register your firearm and fill out a brief questionnaire. To register by mail, detach and mail this page. Find the address at www.AmericanTactical.us or give us a call at 800.290.0065