



# **TYPHOON**

## **DEFENCE INDUSTRIES**

**F12 SEMI AUTOMATIC MAGAZINE FED  
FULL METAL SHOTGUN INSTRUCTION MANUAL**



**READ THE INSTRUCTIONS AND WARNINGS IN THIS MANUAL  
BEFORE USING THIS FIREARM!!!**



1370 BAR  
STEEL SHOT





## **INTRODUCTION TO TYPHOON DEFENCE INDUSTRIES**

For a long time Typhoon Defence Industries LLC. has been associated with the firearms industry in best way. The company has been manufacturing and exporting huge amount type of firearms to more than 28 countries, where has C.I.P , SAAMI and TSE Test procedures by harmonizing the best modern technology and traditional craftsmanship in manufacturing process.

Typhoon Defence Industries LLC. has builded the company's main philosophy and distinctive feature on Research&Development from the begining. This vision provided the company always putting signature to patented systems and inovative designs in Turkish market and International market with a lot of projects.

Typhoon Defence Industries LLC. has these quality certificates :

ISO 9001:2008 Certificate  
European Quality Assurance Certificate  
Turkish Standarts Institution Certificate

Use your Typhoon Defence product for many years with high pleasure and feel yourself special by quality of your product!!!

## **GENERAL INFORMATION**

This semi automatic shotgun (F12) uses gas pressure from the discharged shell in a precision, spring-loaded mechanism to eject empty shell, and load a new cartridge into the chamber (each time the trigger pulled). The system reduces recoil , and allows the shooter to concentrate on target.

This technologically advanced gas metering system allows you to shot 2 ¾" and 3" shells interchangeably with ammunition of the proper gauge for your shotgun with flawless performance. This and other fine features ensure that your shotgun will be a source of pride and pleasure for many years in forward. For 3 ½" models the metering system allows you to shot heavy 2 ¾" , 3" , 3 ½" shells interchangeably.

### **Safety Switch or Button**

The safety is designed to stop the trigger mechanism. Do not rely on your guns safety. Treat every gun as if it were loaded and ready to fire.

The safety on any gun is a mechanical device , and it is not intended as a substitute for common sense or safe gun handling . Always keep the muzzle pointed in a safe direction.

## **SERIAL NUMBER OF THE FIREARM**

The serial number is located on various parts of the shotgun. Each serial number is specific to that shotgun and is used for identification and registration. It is recommended that you record your serial number in your manual and keep the information in a secured location.





## IMPORTANT SAFETY WARNINGS

Be certain this owner's manual is available for reference and is kept with this firearm if transferred to another party. If the manual is lost or misplaced, contact your "Product Service Center" for a free replacement copy, or download a copy from [www.typhoondefence.com](http://www.typhoondefence.com)

After performing any work on your firearm such as cleaning, adjustments, disassembly, or installation of any accessory, the firearm should be re-checked for proper functioning before firing live ammunition.

Firearms are complicated mechanisms. Any modification, alteration, or improper fitting of parts may result in a dangerous malfunction, damage to the firearm and injury to the shooter and others. The firearm's owner must accept full responsibility for the correct reassembly and functioning of the firearm after any disassembly or replacement of parts.

If you do not understand any of the material in this manual or have any questions, contact your dealer or a qualified gunsmith.

Do not attempt to load or use any firearm until you have read and understood the information contained in its owner's manual. Before handling your firearm, you should learn how it operates and how to maintain it. This includes knowing its basic parts, how the manual safety and other safety features operate, how to safely open and close the action, and how to safely load and unload ammunition from the firearm. Improper use and handling is dangerous and could cause serious injury or death to you or those around you. All users of the firearm must become thoroughly familiar with the instructions in this manual.

As the owner of a firearm, you must undertake the full-time responsibility of safe firearms handling for your own safety and the safety of those around you:

- Keep all firearms and ammunition out of the reach of children.
- Store your firearms and ammunition separately.
- Never store a loaded firearm.
- Never leave a loaded firearm unattended.
- Never transport a loaded firearm in a vehicle.
- Unload your firearm when you have stopped shooting and when you have to climb a tree, fence, cross a slippery surface or have to transport it in a vehicle.
- Do not load your firearm before you are in a place where it is safe to shoot, and keep your finger off the trigger until you are on target and have decided to fire.
- Never shoot at water, rocks or any hard surfaces. Shots may glance off such surfaces and cause injuries.
- Do not use alcohol or drugs before or while handling firearms.
- Do not touch the trigger while the safety button is being engaged or disengaged.



Always point the muzzle of your firearm in a safe direction, regardless of whether the firearm is loaded or unloaded. Always treat every firearm as if it were loaded. Give your firearm to someone with the action open (bolt fully rearward) and safety in the "ON" (SAFE) position, after you verify the firearm is unloaded. Insist on the same procedure when receiving a firearm from someone else. Learn the location of all the safety features of your firearm and how they operate. Wear eye and ear protection when shooting. Shooting without proper ear protection can cause hearing damage. The use of eye protection during any type of shooting is important to protect your eyesight. Due to the heavy recoil of a shotgun, maintain an adequate distance between the rear of the scope (if equipped) and your face at all times. Be certain the scope installation does not interfere with access to, or the proper functioning of the safety.

**!!!WE SPECIFICALLY DISCLAIM ANY RESPONSIBILITY FOR DAMAGE OR INJURY WHATSOEVER OCCURRING IN CONNECTION WITH, OR AS A RESULT OF, THE USE OF FAULTY, OR "REMANUFACTURED," OR HAND-LOADED (RELOADED) AMMUNITION. ADDITIONALLY, WE DISCLAIM ANY RESPONSIBILITY FOR DAMAGE OR INJURY WHICH RESULTS FROM ANY MODIFICATIONS OR CHANGES THAT ARE NOT A PART OF THE FIREARM AS DELIVERED FROM THE FACTORY.**

Learn to clean your firearm thoroughly and make certain no oil, grease, or other materials are blocking the barrel. Obstructions of any kind can cause damage to the firearm, and may result in serious personal injury to the shooter and/or others nearby. Practice proper firearm maintenance and safety. Make sure all exposed metal surfaces are coated with a thin film of oil, especially after exposure to damp weather. (See proper section of this manual for cleaning instructions). Do not plug barrel or store in a fabric-lined case which will absorb lubricants from the firearm. Before using after storage, follow complete instructions stated in this manual for familiarization with the firearm. A thorough inspection should be performed before going into the field. Have your firearm periodically checked by a qualified gunsmith. CONGRATULATIONS!!!

You are now the owner of the Typhoon Defence F12 12-gauge shotgun. Your shotgun has an innovative design and is manufactured from high quality materials. With regularly performed maintenance and the use of proper ammunition it will provide you with many years of service.

In order to achieve the best performance and reliability from your shotgun, please read and fully understand all of the instructions, safety guidelines, and warnings carefully in this manual. Your quality shotgun is enormously reliable and safe unless it is handled in a careless or irresponsible manner.

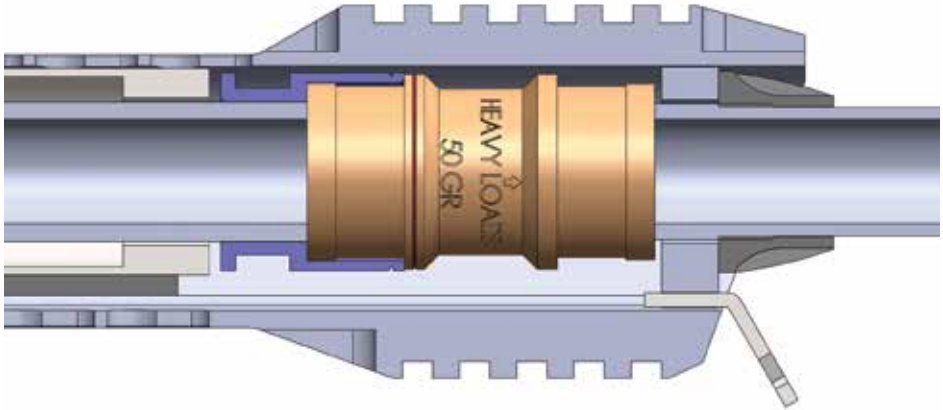
REMEMBER: It is imperative that the firearm handler be fully educated and conscious of the importance of executing proper gun safety rules when operating any firearm.

Before using or firing with any live ammunition you should know and fully understand your shotgun's parts, function, and operating mechanisms. So carefully read and fully understand all of the information about the parts and procedures of using the shotgun safely and effectively.

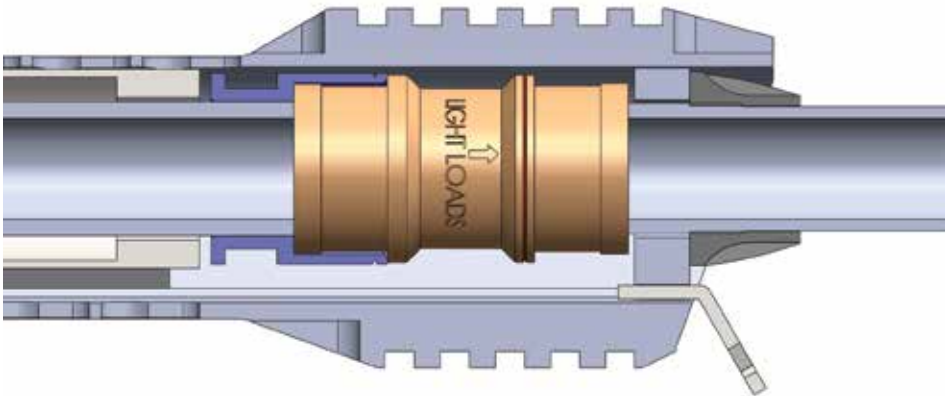




## USAGE OF TYPHOON F12 PATENTED DUAL GAS SYSTEM



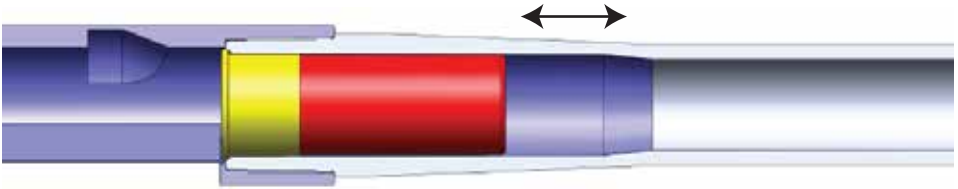
Typhoon F12 Semi automatic Shotgun is designed for maximum operation quality with patented dualside gas system as in the photo. Your gun will be manufactured as that for low and medium pressure shells usage, on the other hand you will be able to increase the operation quality according to your requirements by following these steps easily.



When you disassemble quadrail (forend) of your Typhoon F12 semi automatic shotgun according to instructions on manual you will be able to change side of gas system as in the photo for usage of high pressure shells in best way without any problem. Before doing these kind of operations on your gun, you must read owners manual with all details for not to face with problem because of incorrect assembling.

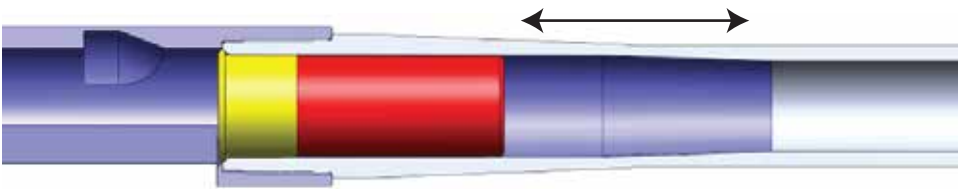


## CLASSIC CHAMBER CONE FOR SHOTGUNS

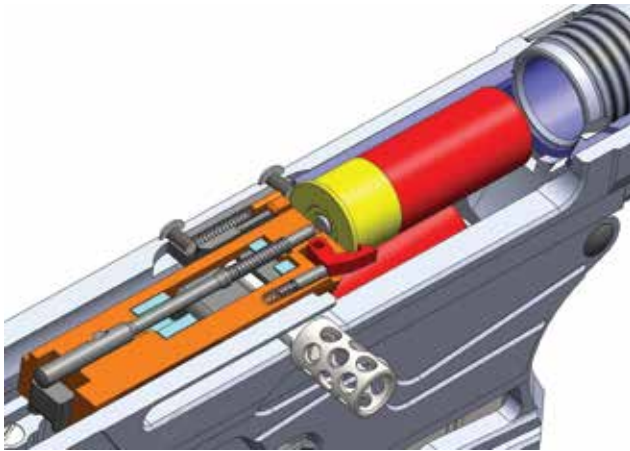


Classic chamber cones cause jamming and prevent optimum focusing on target because of incorrect design on chamber and high pressure inside of the barrel.

## SPECIAL DESIGN F12 EXTRA LONG FORCING CHAMBER CONE

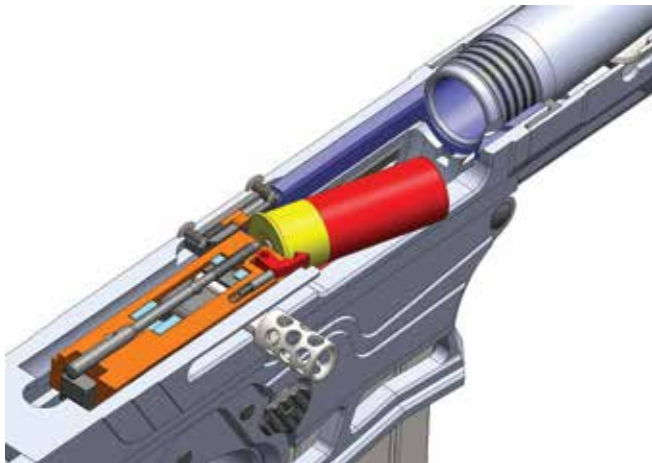


This special extra long forcing cone will provide users %6 reduced recoil and optimum reduced movement to upward direction because of gas pressure inside of barrel while shooting. In this way shooters will be able to get higher shooting performance and target stabilization by special design F12 Extra Long Forcing Chamber Cone.

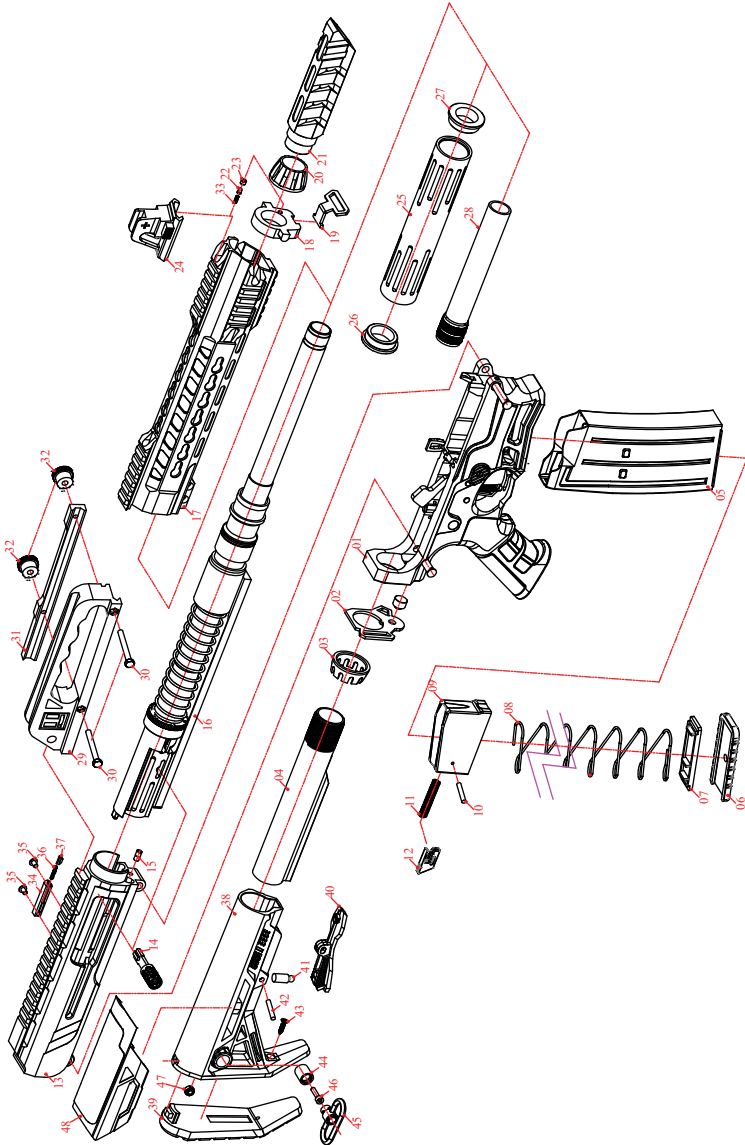


### **F12 SPRING EJECTOR SYSTEM**

This system provides shooters to use Typhoon Defence F12 semi automatic shotgun with variety inch and grammage shells in more healthy way. This system prevents jamming and problems on operation during shooting.



### DIAGRAM OF F12

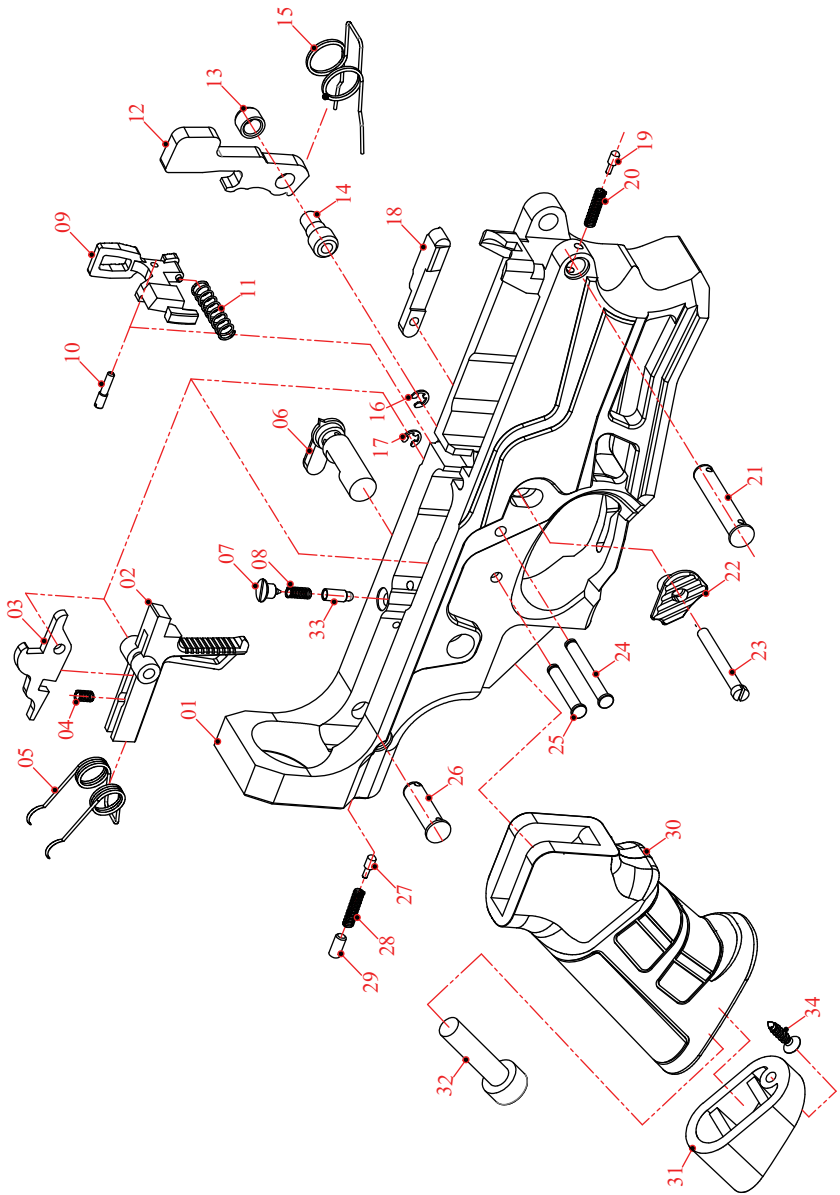




**DIAGRAM OF F12**

<b>Part Nr</b>	<b>Parts Name</b>	<b>Part Nr</b>	<b>Parts Name</b>
1	F12 LOWER FRAME	25	F12 SILENCER
2	STOCK END PLATE	26	F12 SILENCER BACK SIDE NUT
3	CASTLE NUT	27	F12 SILENCER FRONT SIDE NUT
4	6 POSITION BUFFER TUBE	28	EXTENDED CHOKE
5	MAGAZINE	29	ADJUSTABLE REAR SIGHT
6	MAGAZINE BUTTOM PLUG	30	A.R.S SCREW-1
7	SPRING RETAINER APARATUS	31	A.R.S RETAINER CAP
8	MAGAZINE SPRING	32	A.R.S NUT
9	MAGAZINE UPPER PLUG	33	HANDGUARD RETAINER SPRING
10	MAGAZINE UPPER PLUG PIN	34	F12 SPRING EJECTOR
11	MAGAZINE SIDE EXTRACTOR SPRING	35	F12 SPRING EJECTOR RETAINER SCREW
12	MAGAZINE SIDE EXTRACTOR	36	F12 EJECTOR SPRING
13	F12 UPPER FRAME	37	F12 SPRING EJECTOR RETAINER PIN
14	CHARGING HANDLE	38	6 POSITION ADJUSTABLE STOCK
15	HANDGUARD RETAINER PIN	39	F12 RECOIL PAD
16	BARREL GROUP ASSEMBLY	40	STOCK ADJUSTING KIT
17	ALUMINIUM HANDGUARD	41	STOCK RETAINER PIN
18	HANDGUARD RETAINER	42	STOCK ADJUSTING KIT PIN
19	FRONT SWIVEL	43	F12 RECOIL PAD SCREW
20	HANDGUARD RETAINER NUT	44	F12 SWIVEL HOLE
21	F12 FLASHHIDER	45	F12 SWIVEL
22	HANDGUARD RETAINER PIN	46	F12 SWIVEL SCREW
23	HANDGUARD RETAINER SCREW	47	F12 SWIVEL NUT
24	F12 FRONT SIGHT	48	F12 CHEEK ADJUSTMENT

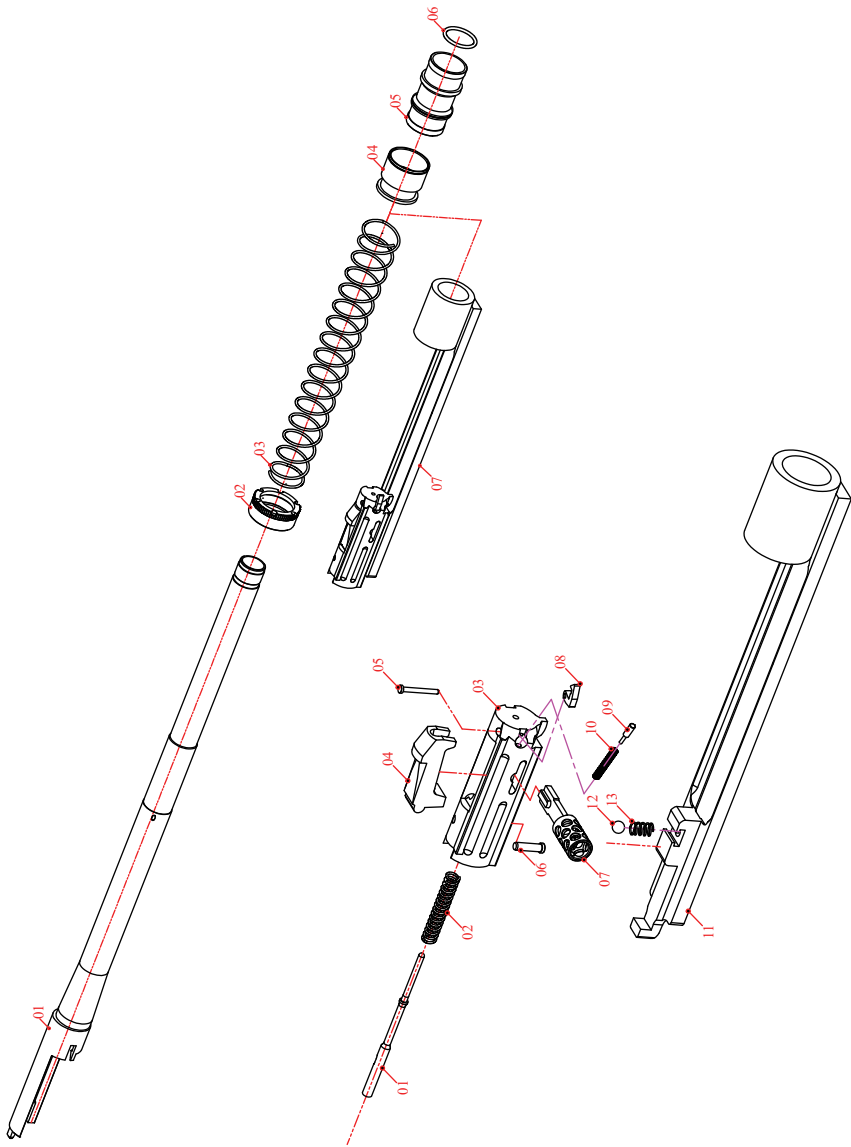
DIAGRAM OF F12 LOWER FRAME



**DIAGRAM OF F12 LOWER FRAME**

<b>Part Nr</b>	<b>Parts Name</b>	<b>Part Nr</b>	<b>Parts Name</b>
1	F12 LOWER FRAME	18	MAGAZINE CATCH
2	TRIGGER	19	PIVOT PIN DETENT
3	DISCONNECTOR	20	PIVOT DETENT SPRING
4	DISCONNECTOR SPRING	21	PIVOT PIN
5	TRIGGER SPRING	22	F12 MAGAZINE CATCH BUTTON
6	SELECTOR SAFETY	23	MAGAZINE CATCH SCREW
7	SAFETY SCREW	24	HAMMER PIN
8	SAFETY SPRING	25	TRIGGER PIN
9	BOLT CATCH	26	TAKEDOWN PIN
10	BOLT CATCH PIN	27	TAKEDOWN PIN DETENT
11	BOLT CATCH SPRING	28	TAKEDOWN DETENT SPRING
12	HAMMER	29	TAKEDOWN RETAINER NUT
13	HAMMER FIXING KIT-1	30	F12 PISTOL GRIP
14	HAMMER FIXING KIT-2	31	PISTOL GRIP BOTTOM CAP
15	HAMMER SPRING	32	PISTOL GRIP SCREW
16	HAMMER PIN SEGMAN	33	SELECTOR DETENT
17	TRIGGER PIN SEGMAN	34	PISTOL GRIP CAP SCREW

### DIAGRAM OF F12 BARREL GROUP & BOLT GROUP



**DIAGRAM OF F12 BARREL GROUP & BOLT GROUP****BARREL GROUP ASSEMBLY**

<b>Part Nr</b>	<b>Parts Name</b>
1	F12 STYLE BARREL
2	F12 BARREL NUT
3	OPERATION SPRING
4	F12 GAS PISTON
5	F12 DUAL GAS SYSTEM
6	GAS ROOM O-RING
7	BOLT GROUP ASSEMBLY

**BOLT GROUP ASSEMBLY**

<b>Part Nr</b>	<b>Parts Name</b>
1	FRING PIN
2	FRING PIN SPRING
3	BOLT
4	BOLT LOCK
5	EXTRACTOR PIN
6	FIRING PIN RETAINER
7	BOLT HANDLE
8	EXTRACTOR
9	EXTRACTOR SPRING PIN
10	EXTRACTOR SPRING
11	ACTION BAR (CARRIER)
12	CARRIER BALL
13	CARRIER BALL SPRING



Photo 1 -) Point the gun in safe direction and be sure about that the gun is empty.



Photo 2-) Pull F12 charging handle to operation direction then use shell safety kit (yellow part) to make ready your gun disassembling in right way. If you do not use that shell safety kit, you will damage shell carrier ramp absolutely!!!



Photo 3 -) Turn allen wrench to the direction of clockwise for starting to disassemble F12 muzzle break as in the photo



Photo 4 -) Turn F12 muzzle break by using your hand to direction of clockwise until thread on barrel allows to disassemble muzzle completely.



Photo 5-) Your F12 shotgun is ready to disassemble in right way with that shell safety kit.



Photo 6-) Push takedown pin at the back side of lower frame receiver by a tool or your finger as in the photo.



Photo 7-) Push pivot pin at the front sight of lower frame by a tool or your finger as in the photo.



Photo 8-) You will be able to separate upper and lower frame of your gun after these steps as in the photo easily in right way.



Photo 9-) Use your F12 Special Wrench Set for starting to disassemble forend of your shotgun.



Photo 10-) Pull or push sling swivel apparatus to the thread of barrel for passing next step.



Photo 11-) Use the 4.00 mm allen wrench in your F12 tool set for turning the screws on bottom side of forend for starting to disassemble forend of your shotgun.



Photo 12-) You can pull easily forend of F12 as in the photo, if you operated the process in Photo 11.



Photo 13-) Pull the action bar until the charging handle and the hole (charging handle lock hole) is parallel for unlocking the charging handle of F12. Then pull the charging handle to right side of the gun for disassembling charging handle.



Photo 14-) Use your F12 Special Wrench Set for turning the barrel nut of your gun.



Photo 15-) You can disassemble bolt group of F12 completely after required steps as in the photo easily.



Photo 16-) If you need to adjust or change your stock you can use F12 Special Wrench Set as in the photo.



Photo 17-) After turning the F12 castle nut until pin leaves stock end plate, you will be able to operate your stock according to your requirements.



Photo 18-) You can adjust trigger range of gun according to your physical features by using the 6 step adjustment kit on your F12 gun as in the photo. On the other hand you are able to adjust checkering of your gun by using the screws of mobile checkering kit.



Photo 19-) If you need to change appearance of your F12 shotgun ; you can insert easily F12 tactical silencer instead of muzzle break easily.





### **USAGE OF MULTI CHOKE**

The purpose of multi(internal) choke is to make barrel's tip narrowed down to shoot far and more collectively or to enlarge barrel's tip to shoot more wider groupment for small shoots. To change or clean the internal choke, proceed as follows:

- 1) Unscrew the internal choke using the special choke wrench supplied with the shotgun and extract it completely from the barrel seat .
- 2) If the threaded seat of the choke on the barrel is too dirty, clean it.
- 3) Reassemble on the barrel seat the kind of choke required, taking care to insert the nonthreaded part inside the barrel, before screwing the choke on the barrel's thread .
- 4) Finish the assembly of the choke by screwing it firmly using the choke wrench .

NOTE: when choke is correctly mounted, it must not protrude from the barrel's muzzle.

NOTE: before re-using the shotgun, make sure that the choke wrench has been removed from the barrel's muzzle.

Before the shotgun is put away, cleaning the internal choke and relative barrel thread is recommended.

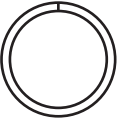
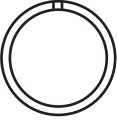
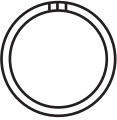
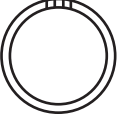
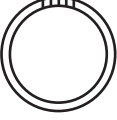
#### **WARNING!!!**

**Do not use choke values 1-2-3 with slugs , single projectiles. Do not use choke 1 or 2 with steel shot.**

#### **WARNING!!!**

**Never shoot steel shot with a full or improved modified cylinder or skeet chokes (marked 3-4-5 cuts respectively). Do not use full,improved modified and modified (marked 1-2-3 cuts ) with slugs, single bullets or single projectiles. Never use cartridge with a case longer than the chamber, as this would have serious consequences for bolt the gun and the shooter.Do not use 3 ½'' cartridges (super magnum) in this shotgun. Never shot without the choke tube fitted on the barrel.**

**CHOKE TYPES AND BENEFICIAL USAGE**

<b>CHOKE TYPE</b>	<b>SYMBOL</b>	<b>GAME</b>	<b>PELLET SIZE</b>	<b>USEFUL SHOOTING DISTANCE</b>
<b>* 1 FULL</b>		<b>Goose, Duck, Wood Grouse. For long range hunting with lead shot and tight groups</b>	<b>1-2-3</b>	<b>50-60 Metres</b>
<b>** 2 IMPROVED MODIFIED</b>		<b>Duck, Pheasant, Wood Grouse, Rabbit</b>	<b>4-5-6</b>	<b>41-44 Metres</b>
<b>*** 3 MODIFIED</b>		<b>Partridge, Pheasant, Quail, Pigeons, Woodcock For long range hunting with lead shot and tight groups.</b>	<b>5-6-7-8</b>	<b>31-41 Metres</b>
<b>**** 4 IMPROVED CYLINDER</b>		<b>Quail, Dove and target shooting For shooter distance more open shooting</b>	<b>7-8 9-10-11-12</b>	<b>30-35 Metres</b>
<b>***** 5 CYLINDER</b>		<b>For sporting clay and skeet shooting. Short distances more open shooting.</b>	<b>7-8 9-10-11-12</b>	<b>20-30 Metres</b>



## **PARTS**

To order parts, please furnish the following information: Your name, address, telephone number, firearm serial number, maker and model. When we receive your request we will send you an order form and a parts breakdown with prices.

## **MAINTENANCE AND CLEANING**

**LUBRICATION WARNING:** Firing a shotgun with oil, grease, or other debris partially obstructing the bore may result in damage to the firearm or injury to the shooter and those nearby. Before firing make sure the bore and chamber of the barrel is unobstructed and dry. Never spray or apply lubricant on shotshells. Firing another shotshell behind an obstruction may damage the shotgun and cause death or injury. Only use lubricants properly and sparingly. You are responsible for the proper care and maintenance of your shotgun.

1. Disassemble your shotgun.
2. Using a proper cleaning rod, run a solvent-wetted patch through the bore several times. This will then be followed by running dry patches through the bore to remove any debris or residue.
3. If the bore is leaded to the extent that the above patch cleaning procedure did not remove the lead, then scrub the bore full length with a solvent-wetted brass bristle brush. When the leading is loose then repeat step #2.
4. The surfaces of bolt carrier, ejector, and inside surfaces of the receiver should be coated very lightly with non-penetrating lubricating oil.
5. Reassemble the shotgun and wipe the exterior metal surfaces sparingly with an oiled cloth. Swab the bore with an oily patch before storing the firearm.
6. Place the shotgun in a safe, locked storage space where unauthorized persons cannot access the firearm. Never store the shotgun in a leather case as leather attracts moisture even though it may appear dry.
7. Never fire your gun without choke tubes snugly tightened in barrels. Do not over tighten choke tubes. Wipe all exposed metal surfaces with an oiled cloth before storing. Do not squirt or pour oil into the inside mechanism because it may cause deformation.

## **SHIPPING**

When returning your gun for service, please take care in packaging. Disassemble your gun, wrap in paper or other protective media and place gun in the original box. (THIS BOX WILL PROTECT THE GUN BUT IS NOT DESIGNED FOR SHIPPING). Wrap box in a cardboard box approved for interstate shipping. Typhoon Defence Industries LLC. is not responsible for damage incurred during shipping.

## **THANK YOU**

Thank you for purchasing a Typhoon Defence Industries shotgun. We are sure this gun will bring you years of hunting and/or shooting pleasure. Your satisfaction is the key to our success. Please let us know if we can be of service and please relay any observations about your gun's performance or appearance. For your questions and comments please visit:

**[www.typhoondefence.com](http://www.typhoondefence.com)**





## **SERVICE AGREEMENT AND LIMITED WARRANTY**

Typhoon Defence Industries agrees to service its products free of charge for defects in materials and workmanship in accordance with the service agreement listed below. The obligation of Typhoon Defence Industries under this agreement is limited to the repair or replacement of unserviceable parts and does not cover any incidental or consequential damages. Other than the express warranty contained herein Typhoon Defence Industries makes no warranties, express or implied.

Typhoon Defence Industries will repair or replace any unserviceable part(s) for two (2) year from date of purchase and further will supply free parts (Wood not included) for an additional two (2) years in accordance with the above warranty statement provided your firearm had not been altered, abused, willfully damaged, or damaged by overpressure ammunition. This agreement is not transferable; its benefits apply only to the original purchaser.

To obtain free service during the time this agreement is in effect, make sure your firearm is unloaded, and send it to Typhoon Defence Industries.

This agreement and the warranties contained herein are void if your registration card is not received with a copy of your sales slip within 30 days from date of purchase



WARANTY CARD

NAME OF PURCHASER: .....

ADRESS OF PRUCHASER: .....

CITY: ..... STATE: ..... ZIPCODE: .....

MOBILE PHONE: .....

PURCHASE DATE: .....

PRODUCT MODEL/NUMBER: .....

GAUGE: ..... SERIAL NUMBER: .....

PURCHASE PRICE: .....

STORE NAME: .....

SIGNATURE: .....



Özerbaş Makina Silah Otomotiv İnşaat San. ve Tic. Ltd. Şti.

SIGN AND STAMP OF DEALER

### BE COURTEOUS

When shooting or hunting always acquire the permission of the landowner. Respect the land. Do not litter, use gates when possible, leave open and closed gates closed. Drive vehicles only where advance permission has been granted any always express gratitude for use of another persons land. Offer your labor or game as repayment for the privilege of use. Remember you are helping develop a reputation for all sportsmen/sportswomen.



**TYPHOON**  
**DEFENCE INDUSTRIES**



Phone :+90 554 350 9098 - Fax : +90 332 524 7236

Atatük Cd. No: 93/1-A 42720 Konya TURKEY

[info@typhoondefence.com](mailto:info@typhoondefence.com) - [www.typhoondefence.com](http://www.typhoondefence.com)