



5140 Commerce Ave. Unit A&B Moorpark, CA 93021

Phone:(805) 978 - 8565

Fax:(805) 978 - 8564

info@dickinsonarms.com



USER'S MANUAL

ECLIPSE

GAS SYSTEM SEMI AUTO SHOTGUN

**READ THE INSTRUCTIONS AND WARNINGS
IN THIS MANUAL CAREFULLY BEFORE USING
THIS SHOTGUN!**



WARNING: This product can expose you to chemicals including lead, which are known to the State of California to cause cancer and birth defects or other reproductive harm. For more information go to www.p65Warnings.ca.gov.

INDEX

SAFETY RULES	2
INITIAL ASSEMBLY AND INSPECTING	3
SAFETY BUTTON.....	4
LOADING AND USAGE	5
DISASSEMBLY	6-7
PART DIAGRAM AND PART LIST	8-9
REASSEMBLY	10-11
USE OF CHOKE TUBES	12-13-14
CLEANING AND MAINTENANCE.....	15
OPTIONAL PART DIAGRAM AND PART LIST.....	16

SAFETY RULES

WARNING: THE FAILURE TO FOLLOW THESE SHOTGUN SAFETY REQUIREMENTS WILL CAUSE SERIOUS PERSONAL INJURY OR DEATH TO YOU OR OTHERS.

- ALWAYS TREAT A FIREARM AS IF IT WERE LOADED. NEVER ASSUME THAT IT IS UNLOADED.
- NEVER POINT THE FIREARMS AT SOMETHING THAT IS NOT SAFE TO SHOOT.
- ALWAYS STORE FIREARMS TO PREVENT CHILDREN FROM HAVING ACCESS TO THEM. IT IS YOUR RESPONSIBILITY TO INSURE THAT UNAUTHORIZED PERSONS DO NOT GAIN ACCESS TO YOUR FIREARM. TO REDUCE THE RISK OF ACCIDENTS INVOLVING CHILDREN, UNLOAD YOUR FIREARM, LOCK IT AND STORE THE AMMUNITION IN A SEPARATE LOCKED LOCATION.
- ALWAYS WEAR ADEQUATE AND PROPER EAR PROTECTORS.
- ALWAYS WEAR SAFETY PROTECTIVE GLASSES SPECIFIED FOR FIREARM USE.
- ALWAYS BE ALERT AND ALWAYS FOLLOW THE SAFETY INSTRUCTIONS OF THE RANGE OFFICER. NEVER SHOOT IF YOU ARE TIRED, COLD OR IMPAIRED IN ANY WAY.
- ALWAYS BE AWARE OF YOUR SURROUNDINGS, AND BE ALERT THAT PEOPLE CAN WALK INTO YOUR LINE OF FIRE.
- THE SHOOTER (AND ALL OTHERS IN THE SHOOTING AREA) MUST ALWAYS BE IN A POSITION THAT IS OUT OF THE LINE OF FIRE.
- NEVER SHOOT AT HARD SURFACES, WATER OR RANDOMLY INTO THE SKY. ALWAYS SELECT A PLACE TO SHOOT THAT HAS A SAFE BACKSTOP AND IS FREE FROM OBSTRUCTIONS AND WATER SURFACES WHICH CAUSE RICOCHETS.
- NEVER CLIMB A TREE, FENCE OR OBSTRUCTION WITH A LOADED FIREARM. OPEN AND EMPTY THE CHAMBER OF YOUR FIREARM AND ENGAGE THE MANUAL SAFETY BEFORE CLIMBING OR DESCENDING A TREE OR BEFORE CLIMBING A FENCE OR JUMPING OVER A DITCH OR OBSTRUCTION.
- NEVER TRANSPORT A LOADED FIREARM.
- NEVER USE ALCOHOL OR DRUGS BEFORE OR WHILE SHOOTING OR HANDLING ANY FIREARM.

STORING YOUR SHOTGUN IN A CARRYING CASE IS NOT ADVISABLE. RUST MAY OCCUR DUE TO TRAPPED MOISTURE IN THE CASE.

INITIAL ASSEMBLY AND INSPECTING

- Your shotgun is shipped from the factory with the barrel not assembled to the receiver (Figure 1).



Figure 1

- Unscrew the fore-end retaining nut (Figure 2) and remove the forend by pulling it forward (Figure 3).



Figure 2



Figure 3

- Next, unscrew the barrel locker nut (Figure 4). Assemble the barrel to the receiver (Figure 5). Screw the barrel locker nut (Figure 6). When doing this you might need to pull/release the cocking handle for easier firing. Assemble the forend (Figure 7) and then screw the forend retaining nut (Figure 8).



Figure 4



Figure 5



Figure 6



Figure 7



Figure 8

SAFETY BUTTON

The safety is designed to stop the trigger operating.

The safety on any gun is a mechanical device, and it is not intended as a substitute for common sense or safe gun handling. Always keep the muzzle pointed in a safe direction.

- The safety is located behind the trigger, and provides protection against accidental or unintentional discharge under normal usage when properly engaged.

- To engage the safety, push the button so that it protrudes from the right side of the gun and the RED RING CAN NOT BE SEEN (Figure 9). The safe should always be in the “on” or “safe” position until you intend to fire the gun.

- When you are ready to fire the gun, press the safety button to the “off” or “fire” position, so that the safety protrudes from the left side of the shotgun and the RED RING APPEARS (Figure 10).

WARNING: The gun will fire when the trigger is pulled intentionally or accidentally when the RED RING APPEARS.



Figure 9



Figure 10

LOADING AND USAGE

WARNING: WHILE LOADING, KEEP THE SAFETY “ON” AT ALL TIMES AND KEEP THE MUZZLE AIMING AT A SAFE DIRECTION.

To load your semi-automatic shotgun, pull the cocking handle backward till it is locked (Figure 11) and press the bolt release button (Figure 12). Looking at the bottom of the gun, you will see that it is possible to move the carrier into the receiver. You can now insert shells in the magazine tube using your thumb (Figure 13). Note that your gun is factory limited to 3 shells - 2 in the magazine and 1 in the chamber - using a magazine plug. To chamber a shell, push the shell drop lever located at the back of the carrier (Figure 14), and pull the cocking handle backward and a shell will transfer from the magazine tube into the chamber (Figure 15). When you pull and release the cocking handle, the first round will get chambered and you are ready to fire. As the first shell is chambered, you can add one more shell into the magazine tube.

WARNING: To prevent unexpected ignition and potential injuries, be certain that each round you use is in the proper gauge, and the safety is engaged while loading.

Always keep your fingers away from the trigger while loading your gun!



Figure 11



Figure 12



Figure 13



Figure 14



Figure 15

DISASSEMBLY

- Unscrew the fore-end retaining nut (Figure 16), and remove the forend (Figure 17). Unscrew the barrel locker nut (Figure 18). Take the barrel off by pulling it forward (Figure 19).



Figure 16



Figure 17



Figure 18



Figure 19

- Grasping the action bar in the hand and pulling the recoil spring slowly backwards, remove the cocking handle (Figure 20). For taking the cocking handle out or inserting it into its slot, the lateral side surface of the cocking handle must center the hole on located on the bolt (Figure 21). This can be achieved by pushing the bolt with your thumb.



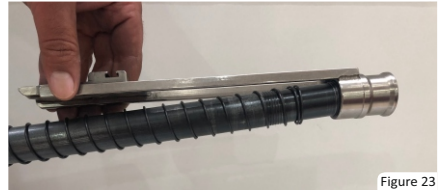
Figure 20



Figure 21

DISASSEMBLY

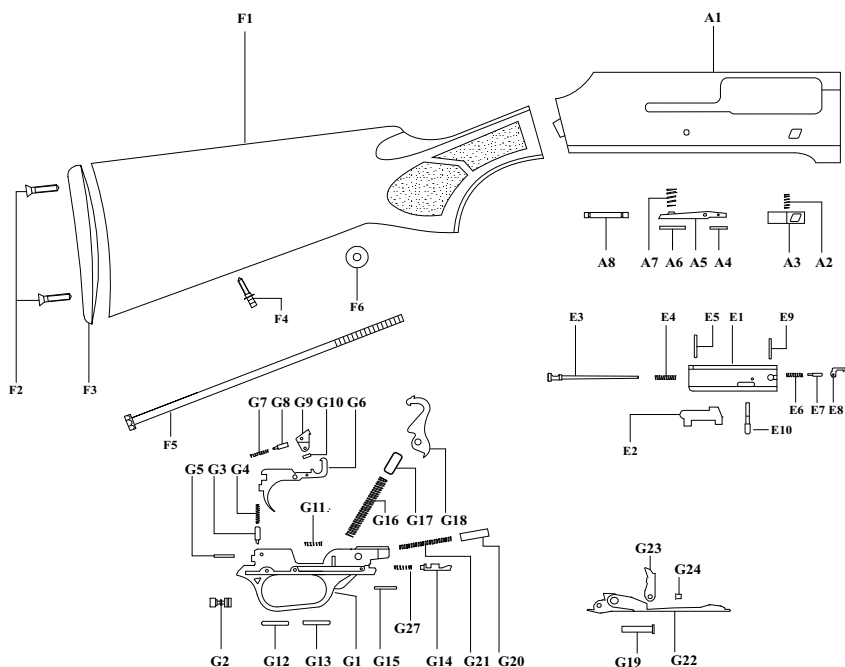
- Next, remove the bolt (Figure 22), action bar (Figure 23), and the recoil spring (Figure 24). Take the gas piston located in the gas chamber out that is under the barrel by pulling it with your fingernails (Figure 25).



- Using a punch tool, remove the trigger group pin from either side of the receiver(Figure 26) then pull down on the trigger group to remove it (Figure 27).

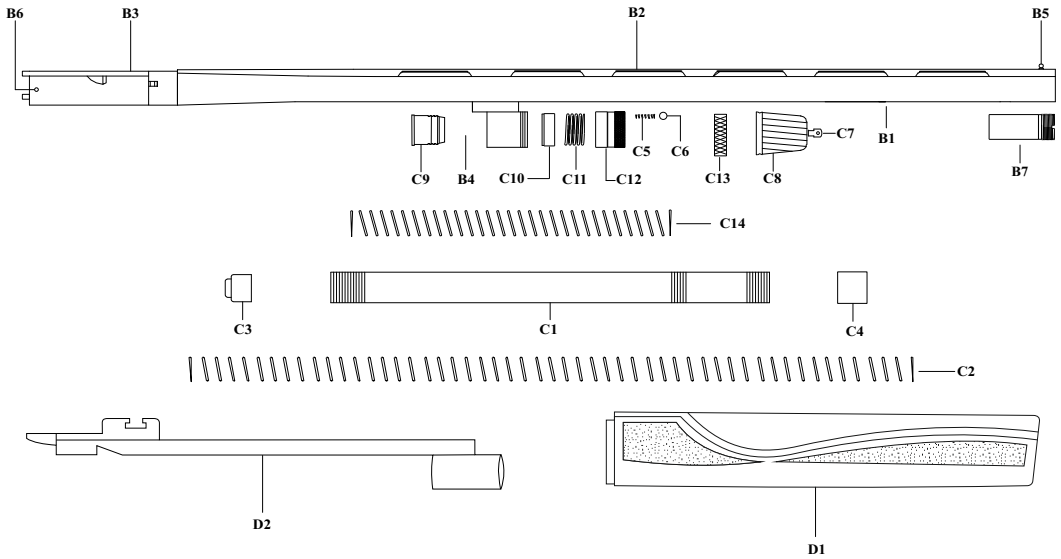


PART DIAGRAM AND PART LIST



PART CODE	PART NAME	PART CODE	PART NAME
A	RECEIVER GROUP	C	MAGAZINE GROUP
A1	RECEIVER	C1	MAGAZINE TUBE
A2	SPRING OF LOCK	C2	MAGAZINE SPRING
A3	LOCK OF CARTRIDGE LOADER	C3	MAGAZINE PLUG FRONT
A4	PLATE OF CARTRIDGE LOADER	C4	MAGAZINE PLUG REAR
A5	LATCH	C5	DETENT BALL SPRING
A6	LATCH PIN	C6	DETENT BALL
A7	LATCH SPRING	C7	SWIVEL HOLDER
A8	TRIGGER PLATE RETAINING PIN	C8	MAGAZINE CAP
B	BARREL GROUP	C9	PISTON
B1	BARREL	C10	DISCHARGE RING
B2	TOP RIB	C11	DISCHARGE SPRING
B3	BARREL HOOD	C12	DISCHARGE COVER
B4	BARREL COLLAR	C13	BARREL LOCKER NUT
B5	SIGHT BEAD	C14	RECOIL SPRING
B6	EJECTOR PIN	D	FOREND GROUP
B7	CHOKE TUBE	D1	FOREND
		D2	ACTION ARM

PART DIAGRAM AND PART LIST



PART CODE	PART NAME	PART CODE	PART NAME
E	BOLT GROUP	G4	SAFETY BUTTON DETENT SPRING
E1	BOLT	G5	SAFETY BUTTON DETENT PIN
E2	LOCKING BOLT	G6	TRIGGER
E3	FIRING PIN	G7	SAFETY SEAR SPRING
E4	FIRING PIN SPRING	G8	SAFETY SEAR SPRING PLUNGER
E5	FIRING PIN RETAINING PIN	G9	SAFETY SEAR
E6	EXTRACTOR SPRING	G10	SAFETY SEAR PIN
E7	EXTRACTOR PLUNGER	G11	TRIGGER SPRING
E8	EXTRACTOR	G12	PIN OF TRIGGER HOLDER
E9	EXTRACTOR PIN	G13	TRIGGER PIN
E10	COCKING HANDLE	G14	SHELL DROP LEVER
F	STOCK GROUP	G15	SHELL DROP LEVER PIN
F1	STOCK	G16	HAMMER SPRING
F2	HEEL PAD SCREWS	G17	HAMMER PLUNGER
F3	HEEL PAD	G18	HAMMER
F4	STOCK SWIVEL	G19	CARRIER AXIS
F5	STOCK BOLT	G20	CARRIER DOG PLUNGER
F6	STOCK BOLT WASHER	G21	CARRIER DOG PLUNGER SPRING
G	TRIGGER GROUP	G22	CARTRIDGE CARRIER
G1	TRIGGER PLATE	G23	CARRIER DOG
G2	SAFETY BUTTON	G24	PIN OF CARRIER DOG
G3	SAFETY BUTTON DETENT	G27	SHELL DROP LEVER SPRING

REASSEMBLY

- First, re-install the trigger group housing (Figure 28), and insert the trigger group housing pin from either side (Figure 29). Before putting the trigger group housing into place, make sure that the hammer is cocked. Figure 30 shows the cocked hammer and Figure 31 shows the decocked hammer.



- Afterwards, mount the recoil spring and insert the action bar and bolt group to the receiver (Figure 32), and insert the cocking handle into its slot (Figure 33). To remove or install the cocking handle, the cocking handle must be centered in the slot on the side of the bolt.



REASSEMBLY

- Now, insert the gas piston into the gas chamber located under the barrel (Figure 34), and attach the barrel to the receiver (Figure 35), screw the barrel nut (Figure 36). Assemble the forend (Figure 37), and finally screw the forend retaining nut (Figure 38).



Figure 34



Figure 35



Figure 36



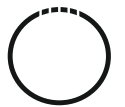
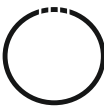
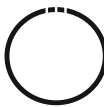
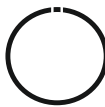
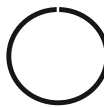
Figure 37



Figure 38

USE OF CHOKE TUBES

The choke tubes control the openness or tightness of the shotguns shot pattern. The chart below lists the chokes available (from open to tight), and the corresponding marks that indicate the choke of your shotgun.

CHOKE	TRUE CYLINDER	1/4	1/2	3/4	FULL
AMERICAN DESIGNATION	CL (Cylinder)	IC (Improved Cylinder)	M (Modified)	IM (Improved Modified)	F (Full)
CHOKE TUBE					
NOTCHES	★★★★★	★★★★	★★★	★★	★
COMPATIBILITY WITH STEEL SHOT	Recommended	Recommended	Recommended	Do Not Use	Do Not Use
BEST IN THE AREA OF	Sporting, clay and skeet shooting. Short distance, more open shooting.	Quail, dove and target shooting. For shorter distance more open shooting.	Hunting woodcock, pheasant & quail with 30-35 yard shots. Long range hunting with steel shot and tight groups.	For hunting pheasant, ducks with 30-40 yard shots.	For duck and goose hunting with 40-45 yard shots. For long range hunting with lead shot and tight groups.

All five choke tubes are included in the package in a specially designed box (Figure 39).



WARNING: When installing a choke tube in your barrel, make sure that the tube is completely screwed down tight in the barrel, never shoot your shotgun without the choke tubes installed as this may damage the barrel and injure the shooter. Choke tubes may become loose after extended firing and should be checked frequently of tightness and cleanliness.

USE OF CHOKE TUBES

INSTALLATION OF CHOKE TUBES

WARNING: Check that the firearm is unloaded. If not, unload the firearm by operating as described in the chapter “Unloading”. Never look into the muzzle or change tube on a loaded gun; even with safety is set to “on”.

- Apply a thin coat of gun oil to the threads of the barrel and of the choke tube.
- Insert the desired chokes into the choke housing. Make sure the notched end is forward.
- Carefully hand screw the choke into the barrels clockwise (Figure 40). Using the choke tube wrench; tighten the choke until it is fully bottomed into its recess in the barrel.
- Remove the choke tube wrench after tightening.



Figure 40

USE OF CHOKE TUBES

REMOVAL OF CHOKE TUBES

WARNING: Check that the firearm is unloaded. If not, unload the firearm by operating as described in the chapter “Unloading”. Never look into the muzzle or change tube on a loaded gun, even with safety engaged.

- Unscrew (counterclockwise) the choke tube using the choke tube wrench supplied (Figure 41). Remove the choke tube from the muzzle (Figure 42).



Figure 41



Figure 42

CLEANING OF CHOKE TUBES

WARNING: Check that the firearm is unloaded. If not, unload the firearm by operating as described in the chapter “Unloading”. Never look into the muzzle or change tube on a loaded gun, even with safety set to “on”.

- Carefully clean the choke housing. If necessary, use a cotton patch coated with gun oil, and brass brushes as necessary.
- Check the choke to make sure it is perfectly clean inside and outside.
- Apply a thin coat of gun oil to the threads of the barrel and of the choke tube.

CLEANING AND MAINTENANCE



WARNING: ENSURE THAT YOUR FIREARM IS UNLOADED BEFORE BEGINNING TO CLEAN IT.



At the end of the day of shooting/hunting, clean and lubricate the shotgun.

Cleaning procedure:

- Disassemble the shotgun (see paragraph “Disassembly”).
- Clean the bores with care by passing a cleaning rod with a cotton patch coated with a high-quality gun oil to remove combustion residues. Also include the chamber in your cleaning operation.
- Do not forget to clean chokes and choke seats by removing the chokes; otherwise the chokes will be really difficult to remove, if they are not cleaned for a long time.
- Run a clean dry patch through the bores to remove oil residues.
- Lightly oil the inside of the barrels with a clean cotton patch coated in high-quality gun oil.
- Clean with care the external surfaces of the shotgun to remove any trace of dirt, sweat and fingerprints.
- Grasp your shotgun on the wooden/synthetic parts and place it into its case or wherever you would like to keep it. Make sure you do not touch the metal parts while you are pulling your shotgun back into its place.

Always follow the instructions provided with your gun cleaner and gun lubricant.

Whenever your firearm has been exposed to sand, dust, extreme humidity water or other adverse conditions, it must be cleaned and lubricated.

After intensive use period, check the BOLT and if necessary, clean and lubricate it using suitable gun oil.

If your firearm is used in a cold climate, be sure to use an oil of an appropriate weight so that it will not congeal in cold temperatures.

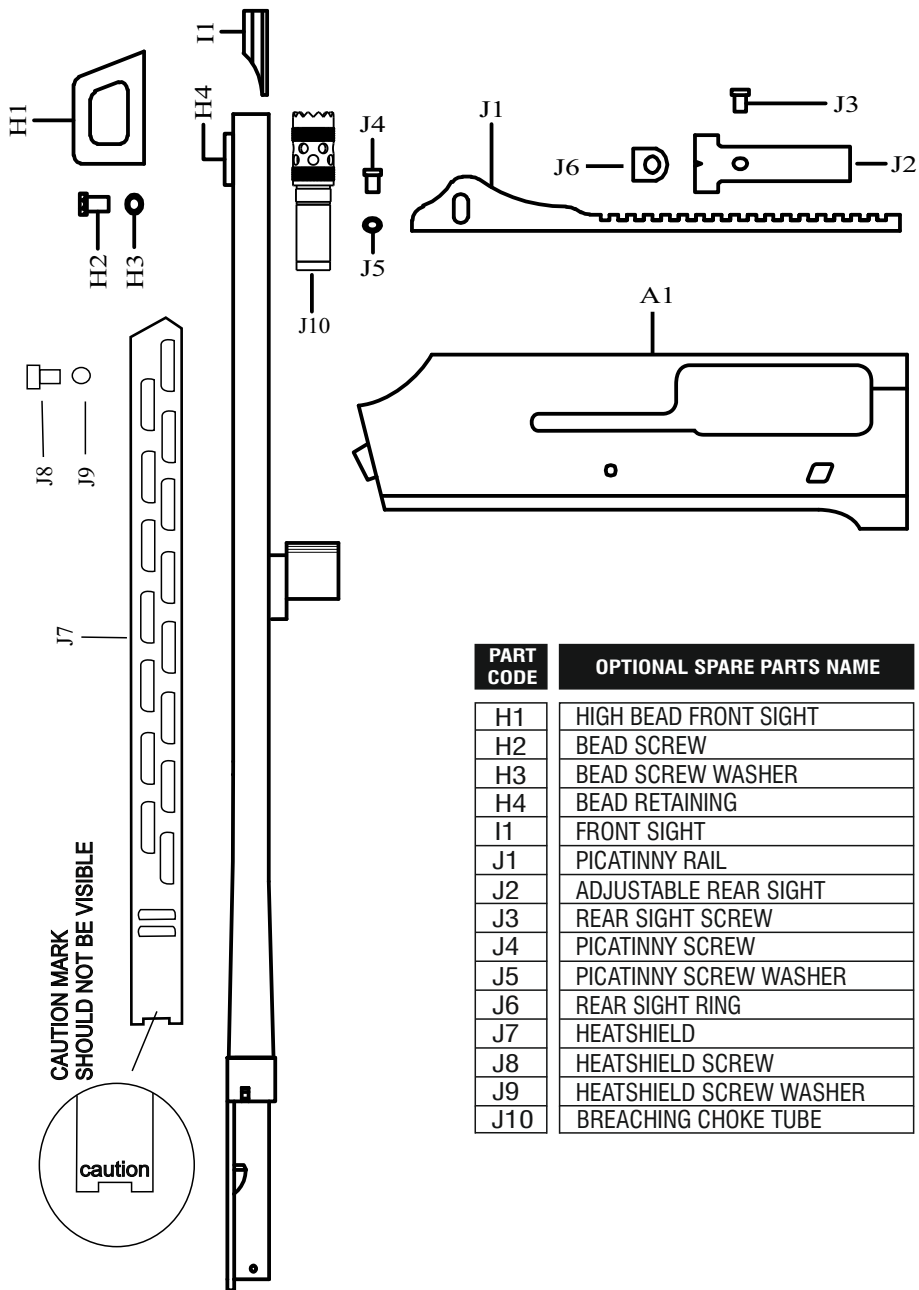
NEVER MANIPULATE, ADJUST OR CHANGE ANY OF THE INTERNAL COMPONENTS OF YOUR FIREARM.

ANY MAINTENANCE, ADJUSTMENT OR SERVICE NOT SPECIFIED IN THIS MANUAL MAY AFFECT THE SAFETY AND RELIABILITY OF YOUR FIREARM AND MUST BE PERFORMED BY AN AUTHORIZED GUN-SMITH USING GENUINE FACTORY PARTS. IF YOU DO OTHERWISE, IMPROPER FUNCTIONING OF YOUR FIREARM MAY OCCUR AND SERIOUS INJURY OR DEATH MAY RESULT.

When storing, do not encase the shotgun in anything that will attract or hold moisture, for example; leather or heavy cloth. Also, do not store shotguns with a plug inserted in the barrel for this can be a contributing factor to moisture accumulation. If the shotgun is to be stored for an extended period, the bore, chamber and internal surfaces should be oiled with a high-quality lubricating oil preservative intended for firearms.

The external parts; receiver, bolt and barrel should be coated with an anti-rust oil.

OPTIONAL PART DIAGRAM AND PART LIST



PART CODE	OPTIONAL SPARE PARTS NAME
H1	HIGH BEAD FRONT SIGHT
H2	BEAD SCREW
H3	BEAD SCREW WASHER
H4	BEAD RETAINING
I1	FRONT SIGHT
J1	PICATINNY RAIL
J2	ADJUSTABLE REAR SIGHT
J3	REAR SIGHT SCREW
J4	PICATINNY SCREW
J5	PICATINNY SCREW WASHER
J6	REAR SIGHT RING
J7	HEATSHIELD
J8	HEATSHIELD SCREW
J9	HEATSHIELD SCREW WASHER
J10	BREACHING CHOKE TUBE