



DICKINSON XXPA SEMI AUTOMATIC AND PUMP ACTION

MAGAZINE FED SHOTGUN

SERVICE and USER'S MANUAL

READ AND UNDERSTAND THIS MANUAL BEFORE USING THIS SHOTGUN

CONTENTS OF THE SHOTGUN CASE



**THANK YOU FOR CHOOSING DICKINSON XXPA SEMI AUTOMATIC AND
PUMP ACTION MAGAZINE FED SHOTGUN...**

	PAGE NO
- WARNINGS AND SAFETY	4
- GENERAL SPECIFICATIONS OF THE DICKINSON XXPA SEMI AUTOMATIC AND PUMP ACTION MAGAZINE FED SHOTGUN	5
- OPERATION MODES OF THE SHOTGUN	5
- USE OF THE SHOTGUN	6
- DISASSEMBLY / REASSEMBLY	8
- GAS VALVE REMOVAL AND INSTALLATION	15
- CLEANING AND MAINTENANCE PROCESS	16
- USE OF AMMUNITION	17
- NOMENCLATURE	18

WARNINGS and SAFETY

READ THIS MANUAL CAREFULLY BEFORE USING YOUR SHOTGUN.

- MAKE SURE THAT THE MAGAZINE WELL AND INSIDE OF THE BARREL ARE FREE FROM ANY OBSTACLES BEFORE USING THE SHOTGUN.
- USE ONLY SAFE AND PROPER PRESSURIZED SHOTSHELLS THAT ARE FACTORY LOADED.
- USE PROTECTIVE OUTFIT AND EQUIPMENT WHILE SHOOTING.
- KEEP YOU FINGER AWAY FROM THE TRIGGER WHILE LOADING/UNLOADING YOUR SHOTGUN EVEN WHEN THE SAFETY IS ON "SAFE" POSITION.
- ALWAYS KEEP THE MUZZLE POINTED IN A SAFE DIRECTION.
- MAKE SURE THAT INSIDE OF THE BARREL IS CLEAN AND DRY AS IT MAY CAUSE DAMAGE TO THE SHOTGUN WHILE SHOOTING THAT MAY RESULT IN INJURIES AND DEATH.
- CLEAN AND MAINTAIN YOUR SHOTGUN AFTER EACH USE AS SHOWN IN THIS MANUAL.
- DO NOT MAKE ANY ALTERATIONS OR MODIFICATIONS ON YOUR SHOTGUN.
- STORE YOUR SHOTGUN IN A SAFE PLACE BEYOND THE REACH OF CHILDREN AND UNAUTHORIZED PERSONS.

GENERAL SPECIFICATIONS

- DICKINSON XXPA OFFERS BOTH SEMI AUTOMATIC AND PUMP ACTION OPERATIONS ON A SINGLE SHOTGUN. THIS MEANS, YOU WILL HAVE BOTH A SEMI AUTOMATIC AND A PUMP ACTION SHOTGUN AT THE SAME TIME.
- DICKINSON XXPA IS A 12 GA SHOTGUN WITH A 76 MM (3") CHAMBER.
- THIS SHOTGUN WILL CYCLE WITH ANY LOAD FROM 24 GRAMS (7/8 OZ) TO HEAVY MAGNUMS.
- ON SEMI AUTOMATIC MODE, THIS SHOTGUN OPERATES LIKE ANY OTHER GAS OPERATED SHOTGUN AND ON PUMP ACTION MODE, YOU CYCLE IT MANUALLY.
- THERE ARE 2, 5 AND 10-ROUND MAGAZINE OPTIONS DEPENDING ON YOUR NEEDS.
- ERGONOMIC AND MODERN DESIGN MOVES IT AHEAD OF THE COMPETITORS.
- DESIGNED AND MANUFACTURED AS A RESULT OF LONG R&D WORK, THE DICKINSON XXPA SEMI AUTOMATIC AND PUMP ACTION MAGAZINE FED SHOTGUN AIMS TO OFFER MAXIMUM QUALITY AND PLEASURE THAT CAN BE OFFERED BY A SHOTGUN.

OPERATION MODES OF THE SHOTGUN

DICKINSON XXPA CAN BE USED EITHER AS SEMI AUTOMATIC OR A PUMP ACTION SHOTGUN.

ON SEMI AUTOMATIC MODE, THIS SHOTGUN OPERATES LIKE OTHER GAS OPERATED SHOTGUNS USING THE PRESSURE THAT ARISES FOLLOWING THE BURN OF THE GUNPOWDER AND TRIGGERING THE BOLT PASSING BY PASSING THROUGH THE GAS DISCHARGE HOLES.

ON PUMP ACTION MODE, GAS DISCHARGE HOLES ARE CLOSED, AND THE GUN IS USED MANUALLY WITH THE FORWARD/REARWARD MOVEMENT OF THE FOREND LIKE ANY OTHER PUMP ACTION SHOTGUN.

USE OF THE SHOTGUN

SEMI AUTOMATIC MODE:

- INSERT THE LOADED MAGAZINE INTO THE MAGAZINE SLOT OF DICKINSON XXPA SEMI AUTOMATIC AND PUMP ACTION MAGAZINE FED SHOTGUN.
- MAKE SURE THAT THE MAGAZINE FULLY INSERTED AND LOCKED IN THE MAGAZINE WELL.
- PULL AND RELEASE THE CHARGING HANDLE.
- THE FIRST SHOTSHELL IS NOW CHAMBERED AND YOUR GUN IS READY TO FIRE.
- SET THE SAFETY TO "SAFE" (S) MODE WHILE YOUR SHOTGUN IS COCKED.
- WHEN YOU ARE READY TO FIRE, SET THE SAFETY TO "FIRE" (F) MODE.
- WHEN ALL THE SHOTSHELLS ARE FIRED, THE BOLT WILL LOCK AT THE REAR POSITION.
- DEPRESS THE BOLT RELEASE LEVER FIRMLY TO MOVE THE BOLT FORWARD.

WARNING: THE EMPTY SHOTGUN WILL ALSO BE COCKED AFTER MOVING THE BOLT FORWARD. PULL THE TRIGGER TO DECOCK YOUR SHOTGUN POINTING THE BARREL IN A SAFE DIRECTION.

- IN CASE THERE IS AN UNFIRED SHOTSHELL LEFT IN THE CHAMBER, PULL THE CHARGING HANDLE AND REMOVE THE UNFIRED SHOTSHELL.

PUMP ACTION MODE:

- TO CONVERT YOUR DICKINSON XXPA SEMI AUTOMATIC AND PUMP ACTION MAGAZINE FED SHOTGUN TO PUMP ACTION MODE, PRESS THE TWO SELECTOR BUTTONS SIMULTANEOUSLY THAT ARE LOCATED ON BOTH SIDES OF THE FOREND AND KEEP THEM PRESSED, MOVE THE FOREND BACKWARD AND RELEASE THE SELECTOR BUTTONS.

- NOW YOUR SHOTGUN IS ON PUMP ACTION MODE.

- INSERT THE LOADED MAGAZINE INTO THE MAGAZINE WELL.

- MOVE THE FOREND FULLY BACKWARD AND THEN FORWARD. THIS WILL CHAMBER THE FIRST SHOT-SHELL.

- YOUR SHOTGUN IS NOW READY TO FIRE.

- TO EJECT THE FIRED SHOTSHELL AND CHAMBER THE NEXT ONE, PUMP THE FOREND FULLY REARWARD AND THEN FORWARD AFTER EACH SHOT.

- WHEN ALL THE SHOTSHELLS ARE FIRED, THE BOLT WILL LOCK AT THE REAR POSITION.

- DEPRESS THE BOLT RELEASE LEVER FIRMLY TO MOVE THE BOLT FORWARD.

WARNING: THE EMPTY SHOTGUN WILL ALSO BE COCKED AFTER MOVING THE BOLT FORWARD. PULL THE TRIGGER TO DECOCK YOUR SHOTGUN POINTING THE BARREL IN A SAFE DIRECTION.

- IN CASE THERE IS AN UNFIRED SHOTSHELL LEFT IN THE CHAMBER, PULL THE FOREND FULLY REARWARD AND REMOVE THE UNFIRED SHOTSHELL.

DISASSEMBLY / REASSEMBLY



Figure 1.1



Figure 1.2

REMARK: Before starting disassembly, point the barrel to a safe direction and keep your finger away from the trigger. Make sure that your shotgun is unloaded.

1) Depress the magazine catch (1.1) or lower magazine catch (1.2) and remove the magazine. Figure 1.1 / Figure 1.2



Figure 2

2) Make sure that the chamber and magazine slot are empty by pulling the cocking handle. Figure 2

DISASSEMBLY / REASSEMBLY



Figure 3.1



Figure 3.2

3) Press and hold the selector buttons (Pump Action-Semi Auto Modes) located on both sides of the forend, pull the forend rearward and release the buttons. To be sure whether your shotgun is properly changed to pump action mode, ensure that the gas valve screw positioned in front of the forend is visible. (Shotgun on Pump Action Mode)".
Figure3.1- Figure 3.



Figure 4

4) Unscrew the barrel casing that covers the front of the barrel by rotating it counterclockwise. Figure 4



Figure 5

5) Remove the front cap by pushing it forward to the muzzle. Figure 5

*** The shotgun must be on Pump Action Mode to be disassembled.**

DISASSEMBLY / REASSEMBLY



6) Pull the forend rearward (6.1) and rotate the gas valve 180° clockwise as shown in the figure (6.2). Figure 6.1 and 6.2.



7) Remove the gas valve using a tool like a punch as shown in the Figure. Figure 7.1 and 7.2

DISASSEMBLY / REASSEMBLY



Figure 8.1



Figure 8.2

8) Press and hold the selector buttons located on both sides of the forend and move it fully forward to remove.
Figure 8.1-Figure 8.2



Figure 9.1



Figure 9.2

8) Remove the lock nut by unscrewing it counterclockwise. Do not forget to take and preserve the O-ring under the lock nut carefully. Figure9.1 -Figure 9.2

DISASSEMBLY / REASSEMBLY



10) Pull the cocking handle halfway rearward and take the barrel out by pulling forward.
Figure 10.1, 10.2 and 10.3.

DISASSEMBLY / REASSEMBLY



Figure 11.1



Figure 11.2

11) Pull the action bar slightly rearward and remove the cocking handle by aligning it with the hole on the bolt frame. Figure 11.1-Figure 11.2

DISASSEMB



Figure 12.1



Figure 12.2



Figure 12.3

12) Remove the action bar and the bolt frame by rotating the magazine slope retainer with the help of a flat screwdriver counterclockwise from "up" to "down" position. Figure 12.1 - Figure 12.2 - Figure 12.3



Figure 13

13) Take the gas piston out as shown on the Figure.
Figure 13

**** For assembling your shotgun, follow the above steps in reverse way.***

WARNING: After disassembling the barrel, do not cock the action before rotating the magazine ramp to down position.

GAS VALVE REMOVAL AND INSTALLATION:



Removal:

- 1- Slide the forend to the rear halfway
- 2- Rotate the gas valve 180 degrees so the point on the gas valve is forward
- 3- Using a punch tool, press the gas valve out from the left side of the shotgun
- 4- Finish by fully removing the gas valve



Installation:

- 1- Start with the forend pulled to the rear halfway
- 2- Insert the gas plug from the right side of the shotgun with the valve point facing forward
- 3- Rotate the gas valve point 180 degrees to the rear and slide the forend forward

CLEANING AND MAINTENANCE PROCESS

1. Disassemble your shotgun as shown in the user's manual.
2. Use a suitable cleaning rod for your shotgun and clean inside of the barrel by attaching a solvent impregnated cloth to the cleaning rod. Repeat the same process with the cleaning rod now with a clean and dry cloth until all the residue in the barrel is wiped.
3. Lightly oil the action bar, action shaft, and inner side of the receiver using a thin gun oil.
4. Reassemble the shotgun and wipe the exterior surface with an oily cloth.

LUBRICATION REMINDER:

Do not use thick oils (like grease) for maintaining your shotgun. Preferably use a thin gun oil or spray oil. The owner of the shotgun is responsible for cleaning and maintenance.

USE OF AMMUNITION

AMMUNITION

With your shotgun, you can use any type of factory loaded shotshells including slugs and steel shots. The chamber of your shotgun is 76 mm (3") so you can shoot both 70 mm (2 ¾") and 76 mm (3") shotshells. Do not ignore the fact that shotshells, which are not factory loaded may cause wear and damage on mechanical parts due to possible unregulated pressure. In case you experience cycling problems with 24-gram (7/8 ons) light loads, we recommend shooting about 100 factory loaded magnum loads.

REMINDER ABOUT AMMUNITION USE

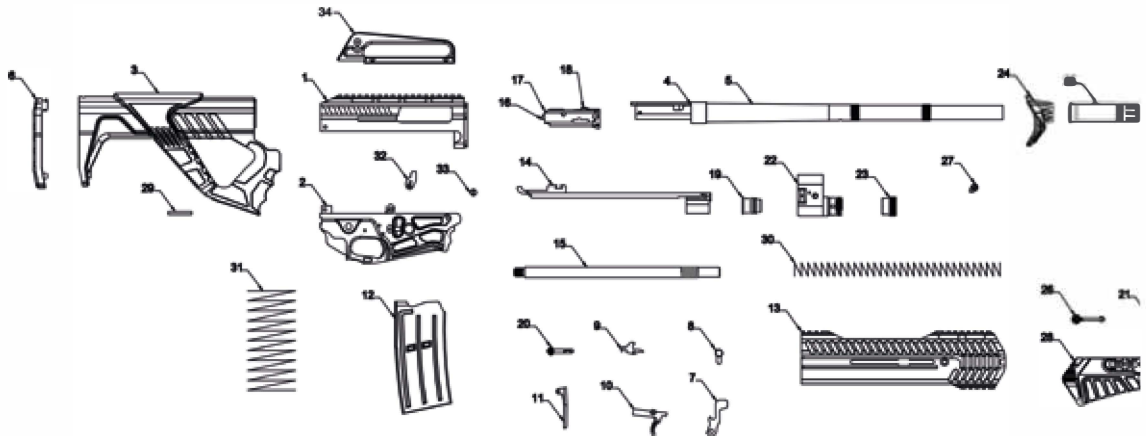
The user of the shotgun is responsible for any possible material damage, injuries and death that occur due the use of non-factory loaded, handmade, non-standard shotshells which are out of the specification of originally designed calibers and diameters. This is a legal warning.

LEAD EXPOSURE WARNING

Exposure to lead is possible while shooting, gun cleaning and touching ammunition in poor ventilated environments. Lead and its components may cause birth defects, infertility, cancer or other serious health problems or injuries. Thoroughly wash your hands and body in case of exposure to lead.

YOU CAN USE LOADS FROM VERY LIGHT 24 GRAMS (7/8 oz.) TO HEAVY MAGNUM LOADS WITH EACH 2-5-10 ROUND MAGAZINES. THE SHOTGUN SHOULD BE CLEANED AND LUBRICATED AFTER SHOOTING ONE HUNDRED RAUNDS.

NOMENCLATURE



1- UPPER RECEIVER

8- SAFETY

15- ACTION SHAFT

22- GAS CHAMBER

29- RETAINING PIN

2- LOWER RECEIVER

9- SEAR

16- FIRING PIN

23- LOCK NUT

30- RECOIL SPRING

3- BUTTSTOCK

10- TRIGGER

17- BOLT FRAME

24- FRONT CAP

31- MAGAZINE SPRING

4- BARREL BREECH

11- MAGAZINE LATCH

18- LOCK

25- BARREL CASING

32- MAGAZINE SLOPE

5- BARREL

12- MAGAZINE (5 ROUNDS)

19- PISTON

26- FOREND PLUNGER

33- MAGAZINE SLOPE RETAINER

6- BUTT PAD

13- HANDGUARD

20- MAGAZINE CATCH BUTTON

27- GAS VALVE

34- REAR SIGHT

7- HAMMER

14- ACTION BAR

21- GAS CAM SEAT

28- FOREND




DICKINSON