



A. Uberti S.p.A.

Via Artigiani, 1 - Gardone V.T. (Brescia) - ITALY

Instruction Manual

BEFORE REMOVING THE FIREARM FROM THIS PACKAGE,
READ & UNDERSTAND THE PRECAUTIONS IN THE
INSTRUCTIONS MANUAL

CONVERSION MODELS

SPECIAL SAFETY INSTRUCTIONS

- 1) DO NOT transport your Uberti Conversion with a cartridge in the chamber. Failure to observe this rule could result in an accidental discharge if the firearm is dropped or knocked.
- 2) We advise that you DO NOT use old cartridges in these firearms because the brass powder, after a certain period of time, can deteriorate and damage your firearm which can be dangerous also for yourself.
- 3) NEVER use cartridges marked "High Speed" or "High Velocity".
- 4) Uberti assumes no liability for incidents occurring through the use of reloaded ammunitions.
Use **ONLY COMMERCIALY** loaded cartridges that have been loaded in accordance with SAAMI-C.I.P. standards.

IMPORTANT

The old-timers used to say that the safest way to carry a single-action revolver was to load only five chambers and let the hammer rest, in the safety position, on the empty sixth chamber. That's good advice even today. It still takes proper care in handling and use by you, its owner.

Remember to tighten up your screws after firing or at least when you clean your firearm.

Draw the hammer back approximately 1/2" until you feel the hammer "click" into the "half cock" position (Fig.2). With the enclosed screwdriver key, turn the SAFETY BLOCK screw head clockwise (located on the right side of the hammer) until you see the SAFETY BLOCK come all the way out (Fig.1). Gently pull the hammer all the way back to the full cock position (Fig. 3), always keeping control of the hammer, and depress the trigger, now, gently lower the hammer down onto an EMPTY chamber. The hammer is now in the safety position. Use this position every time you are not actively engaged in shooting your revolver. NEVER POSITION A LIVE ROUND UNDER THE HAMMER UNTIL YOU ARE READY TO FIRE!

To fire the gun, you will need to reverse the above procedure, always making certain the gun is pointed in a safe, down range direction.

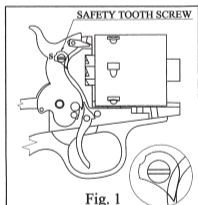


Fig. 1
1. Basic Safety Block "Activated" Position

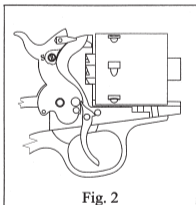


Fig. 2
2. Half Cock Position Only Loading / Unloading

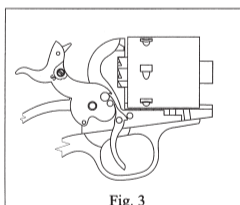


Fig. 3
3. Full Cock Position Only Firing

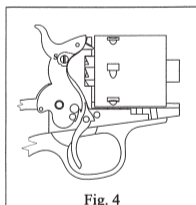


Fig. 4
4. Hammer Position After Shooting

DISASSEMBLY

To disassemble your Conversion, insure there is no ammunition or casing in the cylinder. After checking the cylinder for any ammunition or casings, you will have to turn the wedge screw, located on the left side of the barrel, above the wedge, to the OPEN position. You will note that the screw has a flat cut into one side of the screw head. Align this flat with the wedge (See Fig. 6). After turning the wedge screw to the OPEN position, remove the wedge from the barrel. Once the wedge is removed, pull the barrel off the cylinder pin towards the front. After removing the barrel, the cylinder can be removed for cleaning. To assemble the Open Top, reverse the above and insure you turn the wedge screw 1/2 turn to the CLOSED position. (See Fig.5).

NOTE: Keep in mind the wedge is the means of adjusting the barrel to cylinder gap. If the wedge is pushed in too far the barrel to cylinder gap will be too tight and the cylinder cannot rotate. The revolver is jammed. If this happens, back out the wedge.

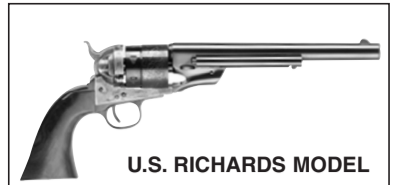
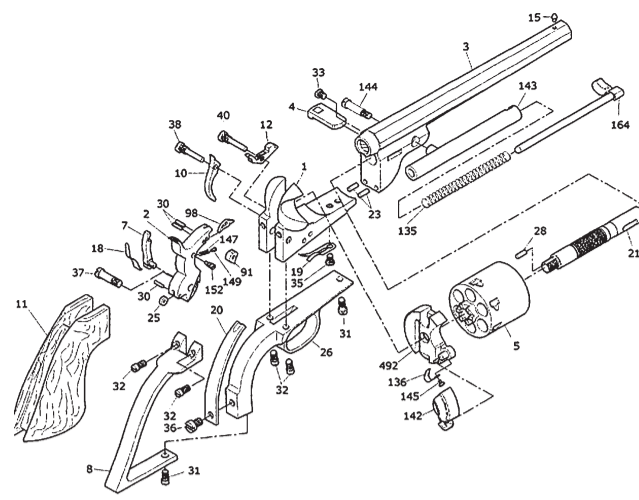
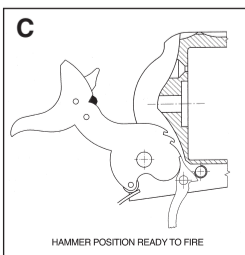
LOADING

Keeping your finger out of the trigger guard and off the trigger, draw the hammer back to the half-cock position which makes the cylinder free to rotate. Then open the loading gate as far as it will go. This will expose each chamber, one at a time, as you rotate the cylinder. Make certain you have the *exact* caliber cartridges matching the *exact* caliber of your revolver. Then load one cartridge in each chamber. Close the loading gate which, as you can see, becomes part of the recoil shield. Then place the hammer in the safety notch position by drawing it back, allow the hammer to travel slowly forward, but only far enough to pass its half-cock notch position, carefully pull the trigger back, and, holding it back, slightly to disengage it from its half-cock notch. Holding the hammer back out of its half-cock notch position, carefully pull the trigger back, and, holding it back, allow the hammer to travel slowly forward, but only far enough to pass its half-cock notch. **NOTE:** You will *not* hear a click as it moves through the half-cock notch. Then release the pressure on the trigger and continue to slowly lower the hammer forward until it clicks into its safety position. Again, you should practice this loading function without *any* cartridges until you are comfortable with handling the hammer and are familiar with its respective notches. Then, *and only then*, are you and your revolver ready for use.

FIRING (FULL COCK) POSITION

Draw the hammer full rearward to its full cock position. Make sure it clicks into this rear-most position. Your revolver is now ready to fire. (See drawing 'C')

NOTE: Never attempt to fire your revolver in any position except the full cock position. Attempting to pull the trigger in the safety position or half cock position will strain the mechanism and make it unsafe. (It might even break if you are strong enough).



U.S. RICHARDS MODEL



MODEL 1851 RICHARDS-MASON CONVERSION

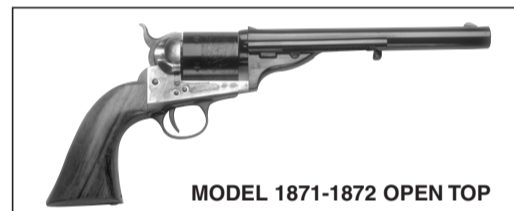


MODEL 1860 RICHARDS-MASON CONVERSION

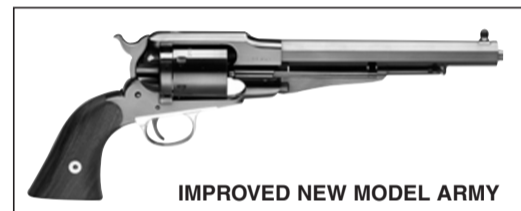
Revolver 1851 Richards-Mason Conversion

N.	DESCRIPTION
1	Frame Assembly
2	Hammer Assembly
3	Barrel 7 1/2"
4	Wedge
5	Cylinder
7	Hand
8	Backstrap Brass
10	Trigger
11	Rough Grip
11	Polished Grip
12	Bolt
15	Sight
18	Hand Spring
19	Trigger Bolt Spring
20	Main Spring
21	Base Pin
23	Barrel Pin
25	Roller
26	Triggerguard Brass
30	Hammer Pin
31	Front Triggerguard Screw

N.	DESCRIPTION
32	Backstrap & Triggerguard Screw
33	Wedge Screw
35	Trigger Bolt Spring Screw
36	Main Spring Screw
37	Hammer Screw
38	Trigger Screw
40	Bolt Screw
91	Hammer Safety Bar
98	Firing Pin
135	Ejector Spring
136	Gate Spring
142	Gate
143	Ejector Rod Tube
144	Ejector Rod Tube Screw
145	Gate Spring Screw
147	Hammer Safety Spring
149	Safety Pin
152	Hammer Safety Stop Screw
164	Ejector Nut Assembly
492	Breech
455	Connect Screw



MODEL 1871-1872 OPEN TOP



IMPROVED NEW MODEL ARMY

If you have your revolver in the full cock position and change your mind and don't want to shoot, carefully follow these steps:

1. Point the revolver in a safe direction.
2. Fully draw the hammer back with your thumb and continue holding it fully rearward while pulling the trigger backward. Hold the trigger and hammer back in this position.
3. While you keep holding the trigger back, slowly lower the hammer downward, past its half cock notch. **Remember - you are lowering it toward a live round!** Be careful and keep it pointed in a safe direction.
4. When past the half cock notch, release pressure on the trigger and take your finger out of the trigger guard.
5. Continue to lower the hammer to its safety notch position.

LOADING

Keeping your finger out of the trigger guard and off the trigger, draw the hammer back to the half-cock position which makes the cylinder free to rotate. Then open the loading gate as far as it will go. This will expose each chamber, one at a time, as you rotate the cylinder. Make certain you have the *exact* caliber cartridges matching the *exact* caliber of your revolver. Then load one cartridge in each chamber. Close the loading gate which, as you can see, becomes part of the recoil shield. Then place the hammer in the safety notch position by drawing it back, allow the hammer to travel slowly forward, but only far enough to pass its half-cock notch position, carefully pull the trigger back, and, holding it back, slightly to disengage it from its half-cock notch. Holding the hammer back out of its half-cock notch position, carefully pull the trigger back, and, holding it back, allow the hammer to travel slowly forward, but only far enough to pass its half-cock notch. **NOTE:** You will *not* hear a click as it moves through the half-cock notch. Then release the pressure on the trigger and continue to slowly lower the hammer forward until it clicks into its safety position. Again, you should practice this loading function without *any* cartridges until you are comfortable with handling the hammer and are familiar with its respective notches. Then, *and only then*, are you and your revolver ready for use.

UNLOADING

Draw the hammer to its half-cock position and open the loading gate on the right rear part of the frame. Push out each cartridge or empty case with the ejector rod located under the barrel. Operate the ejector rod in each chamber to its full length to assure full length case ejection. Close the loading gate after you are sure that all six chambers in your revolver are empty.

CLEANING

Check first to make sure your revolver is empty. Then remove the cylinder using the following steps:

1. Open the loading gate.
2. Put the hammer in its half-cock notch.
3. Depress the base pin catch. This is the spring loaded plunger which is located on the left front side of the frame. Keep it depressed.
4. Slide the base pin all the way out. The base pin is the heavy pin around which the cylinder revolves (and provides a bearing surface for the cylinder). It should always be clean and lubricated.
5. Remove cylinder toward the loading gate.

The cylinder is made to fit your revolver precisely and can be removed and replaced easily, but carefully. It is a close fit, so don't force it to move in any direction. To reassemble, simply reverse the steps used in removal. When you reassemble the base pin, make sure the base pin catch snaps back to its regular position. You can test this by making sure the plunger is free to move when you depress it and it returns under its own spring pressure.

Use a wood, aluminum or brass cleaning rod (not steel), a brass bristle brush, and patches appropriate to your revolver's caliber to clean it. Use a good quality cleaning solution to scrub the bore and each cylinder. While scrubbing the bore, always brush all the way through the bore; never try to reverse directions while the brush is actually in the barrel or chamber. After scrubbing, run clean patches through the bore and chambers until they come out clean. Then completely, but lightly, oil the entire revolver. You'll find that the oil will nicely color the one piece grip of your revolver over the years, and it will develop and retain a soft patina glow. Use a good quality brass polish on the back-strap and trigger guard. The brass parts are solid brass, and, as such, will tarnish, reflecting their good quality. It is easily removed with any good quality brass polish.

Use your revolver carefully and safely. Help us to help you keep and protect your right to gun ownership.

CAUTION - Remember, when you fullcock your revolver to shoot it again, you rotate the cylinder, you decide not to fire when you decocked the pistol. This round is still live and will rotate back towards the firing position with each cocking. Do not forget about this round.

If you fired rounds prior to the decocking operation and commence firing again, the hammer will fall on one or more empty cylinders and still will fall on a live round. Be careful and attentive to this live round.

Always keep pistol pointed in a safe direction.