



A. Uberti S.p.A.

Via Artigiani, 1 - Gardone V.T. (Brescia) - ITALY

Instruction Manual

BEFORE REMOVING THE FIREARM FROM THIS PACKAGE,
READ & UNDERSTAND THE PRECAUTIONS IN THE
INSTRUCTIONS MANUAL

CONVERSION MODELS

SPECIAL SAFETY INSTRUCTIONS

- DO NOT transport your Uberti Conversion with a cartridge in the chamber. Failure to observe this rule could result in an accidental discharge if the firearm is dropped or knocked.
- We advise that you DO NOT use old cartridges in these firearms because the brass powder, after a certain period of time, can deteriorate and damage your firearm which can be dangerous also for yourself.
- NEVER use cartridges marked "High Speed" or "High Velocity".
- Uberti assumes no liability for incidents occurring through the use of reloaded ammunitions.
Use **ONLY COMMERCIALY** loaded cartridges that have been loaded in accordance with SAAMI-C.I.P. standards.

IMPORTANT

The old-timers used to say that the safest way to carry a single-action revolver was to load only five chambers and let the hammer rest, in the safety position, on the empty sixth chamber. That's good advice even today. It still takes proper care in handling and use by you, its owner.

Remember to tighten up your screws after firing or at least when you clean your firearm.

Draw the hammer back approximately 1/2" until you feel the hammer "click" into the "half cock" position (Fig.2). With the enclosed screwdriver key, turn the SAFETY BLOCK screw head clockwise (located on the right side of the hammer) until you see the SAFETY BLOCK come all the way out (Fig.1). Gently pull the hammer all the way back to the full cock position (Fig. 3), always keeping control of the hammer, and depress the trigger, now, gently lower the hammer down onto an EMPTY chamber. The hammer is now in the safety position. Use this position every time you are not actively engaged in shooting your revolver. NEVER POSITION A LIVE ROUND UNDER THE HAMMER UNTIL YOU ARE READY TO FIRE!

To fire the gun, you will need to reverse the above procedure, always making certain the gun is pointed in a safe, down range direction.

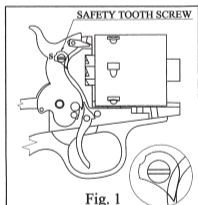


Fig. 1
1. Basic Safety Block "Activated" Position

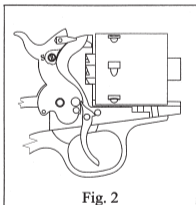


Fig. 2
2. Half Cock Position Only Loading / Unloading

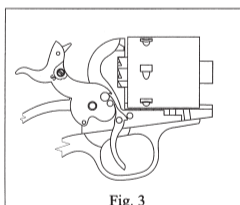


Fig. 3
3. Full Cock Position Only Firing

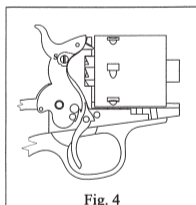


Fig. 4
4. Hammer Position After Shooting

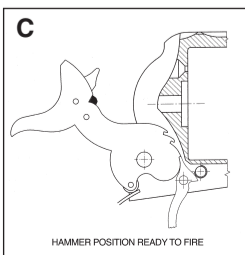
DISASSEMBLY

To disassemble your Conversion, insure there is no ammunition or casing in the cylinder. After checking the cylinder for any ammunition or casings, you will have to turn the wedge screw, located on the left side of the barrel, above the wedge, to the OPEN position. You will note that the screw has a flat cut into one side of the screw head. Align this flat with the wedge (See Fig. 6). After turning the wedge screw to the OPEN position, remove the wedge from the barrel. Once the wedge is removed, pull the barrel off the cylinder pin towards the front. After removing the barrel, the cylinder can be removed for cleaning. To assemble the Open Top, reverse the above and insure you turn the wedge screw 1/2 turn to the CLOSED position. (See Fig.5).

NOTE: Keep in mind the wedge is the means of adjusting the barrel to cylinder gap. If the wedge is pushed in too far the barrel to cylinder gap will be too tight and the cylinder cannot rotate. The revolver is jammed. If this happens, back out the wedge.

LOADING

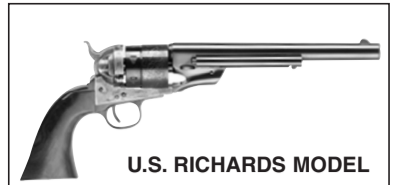
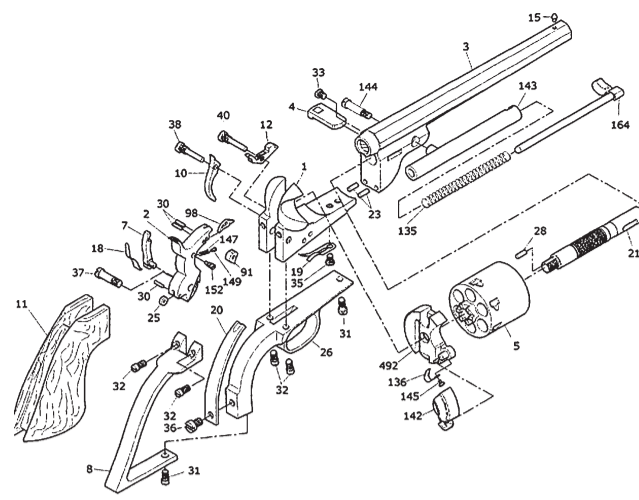
Keeping your finger out of the trigger guard and off the trigger, draw the hammer back to the half-cock position which makes the cylinder free to rotate. Then open the loading gate as far as it will go. This will expose each chamber, one at a time, as you rotate the cylinder. Make certain you have the exact caliber cartridges matching the exact caliber of your revolver. Then load one cartridge in each chamber. Close the loading gate which, as you can see, becomes part of the recoil shield. Then place the hammer in the safety notch position by drawing it back, allow the hammer to travel slowly forward, but only far enough to pass its half-cock notch position, carefully pull the trigger back, and, holding it back, slightly to disengage it from its half-cock notch. Holding the hammer back out of its half-cock notch position, carefully pull the trigger back, and, holding it back, allow the hammer to travel slowly forward, but only far enough to pass its half-cock notch. **NOTE:** You will not hear a click as it moves through the half-cock notch. Then release the pressure on the trigger and continue to slowly lower the hammer forward until it clicks into its safety position. Again, you should practice this loading function without any cartridges until you are comfortable with handling the hammer and are familiar with its respective notches. Then, and only then, are you and your revolver ready for use.



FIRING (FULL COCK) POSITION

Draw the hammer full rearward to its full cock position. Make sure it clicks into this rear-most position. Your revolver is now ready to fire. (See drawing 'C')

NOTE: Never attempt to fire your revolver in any position except the full cock position. Attempting to pull the trigger in the safety position or half cock position will strain the mechanism and make it unsafe. (It might even break if you are strong enough).



U.S. RICHARDS MODEL



MODEL 1851 RICHARDS-MASON CONVERSION

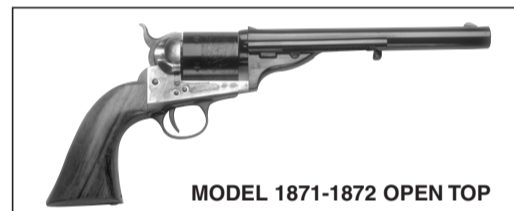


MODEL 1860 RICHARDS-MASON CONVERSION

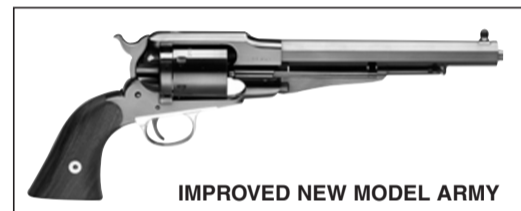
Revolver 1851 Richards-Mason Conversion

N.	DESCRIPTION
1	Frame Assembly
2	Hammer Assembly
3	Barrel 7 1/2"
4	Wedge
5	Cylinder
7	Hand
8	Backstrap Brass
10	Trigger
11	Rough Grip
11	Polished Grip
12	Bolt
15	Sight
18	Hand Spring
19	Trigger Bolt Spring
20	Main Spring
21	Base Pin
23	Barrel Pin
25	Roller
26	Triggerguard Brass
30	Hammer Pin
31	Front Triggerguard Screw

N.	DESCRIPTION
32	Backstrap & Triggerguard Screw
33	Wedge Screw
35	Trigger Bolt Spring Screw
36	Main Spring Screw
37	Hammer Screw
38	Trigger Screw
40	Bolt Screw
91	Hammer Safety Bar
98	Firing Pin
135	Ejector Spring
136	Gate Spring
142	Gate
143	Ejector Rod Tube
144	Ejector Rod Tube Screw
145	Gate Spring Screw
147	Hammer Safety Spring
149	Safety Pin
152	Hammer Safety Stop Screw
164	Ejector Nut Assembly
492	Breech
455	Connect Screw



MODEL 1871-1872 OPEN TOP



IMPROVED NEW MODEL ARMY

If you have your revolver in the full cock position and change your mind and don't want to shoot, carefully follow these steps:

- Point the revolver in a safe direction.
- Fully draw the hammer back with your thumb and continue holding it fully rearward while pulling the trigger backward. Hold the trigger and hammer back in this position.
- While you keep holding the trigger back, slowly lower the hammer downward, past its half cock notch. **Remember - you are lowering it toward a live round!** Be careful and keep it pointed in a safe direction.
- When past the half cock notch, release pressure on the trigger and take your finger out of the trigger guard.
- Continue to lower the hammer to its safety notch position.

LOADING

Keeping your finger out of the trigger guard and off the trigger, draw the hammer back to the half-cock position which makes the cylinder free to rotate. Then open the loading gate as far as it will go. This will expose each chamber, one at a time, as you rotate the cylinder. Make certain you have the exact caliber cartridges matching the exact caliber of your revolver. Then load one cartridge in each chamber. Close the loading gate which, as you can see, becomes part of the recoil shield. Then place the hammer in the safety notch position by drawing it back, allow the hammer to travel slowly forward, but only far enough to pass its half-cock notch position, carefully pull the trigger back, and, holding it back, slightly to disengage it from its half-cock notch. Holding the hammer back out of its half-cock notch position, carefully pull the trigger back, and, holding it back, allow the hammer to travel slowly forward, but only far enough to pass its half-cock notch. **NOTE:** You will not hear a click as it moves through the half-cock notch. Then release the pressure on the trigger and continue to slowly lower the hammer forward until it clicks into its safety position. Again, you should practice this loading function without any cartridges until you are comfortable with handling the hammer and are familiar with its respective notches. Then, and only then, are you and your revolver ready for use.

UNLOADING

Draw the hammer to its half-cock position and open the loading gate on the right rear part of the frame. Push out each cartridge or empty case with the ejector rod located under the barrel. Operate the ejector rod in each chamber to its full length to assure full length case ejection. Close the loading gate after you are sure that all six chambers in your revolver are empty.

CLEANING

Check first to make sure your revolver is empty. Then remove the cylinder using the following steps:

- Open the loading gate.
- Put the hammer in its half-cock notch.
- Depress the base pin catch. This is the spring loaded plunger which is located on the left front side of the frame. Keep it depressed.
- Slide the base pin all the way out. The base pin is the heavy pin around which the cylinder revolves (and provides a bearing surface for the cylinder). It should always be clean and lubricated.
- Remove cylinder toward the loading gate.

The cylinder is made to fit your revolver precisely and can be removed and replaced easily, but carefully. It is a close fit, so don't force it to move in any direction. To reassemble, simply reverse the steps used in removal. When you reassemble the base pin, make sure the base pin catch snaps back to its regular position. You can test this by making sure the plunger is free to move when you depress it and it returns under its own spring pressure.

Use a wood, aluminum or brass cleaning rod (not steel), a brass bristle brush, and patches appropriate to your revolver's caliber to clean it. Use a good quality cleaning solution to scrub the bore and each cylinder. While scrubbing the bore, always brush all the way through the bore; never try to reverse directions while the brush is actually in the barrel or chamber. After scrubbing, run clean patches through the bore and chambers until they come out clean. Then completely, but lightly, oil the entire revolver. You'll find that the oil will nicely color the one piece grip of your revolver over the years, and it will develop and retain a soft patina glow. Use a good quality brass polish on the back-strap and trigger guard. The brass parts are solid brass, and, as such, will tarnish, reflecting their good quality. It is easily removed with any good quality brass polish.

Use your revolver carefully and safely. Help us to help you keep and protect your right to gun ownership.

CAUTION - Remember, when you fullcock your revolver to shoot it again, you rotate the cylinder, you decide not to fire when you decocked the pistol. This round is still live and will rotate back towards the firing position with each cocking. Do not forget about this round.

If you fired rounds prior to the decocking operation and commence firing again, the hammer will fall on one or more empty cylinders and still will fall on a live round. Be careful and attentive to this live round.

Always keep pistol pointed in a safe direction.

SAFETY MANUAL

This Manual Should Always Accompany this Firearm and Be Transferred With It Upon Change of Ownership SAFETY INSTRUCTIONS



Whether you are an experienced safe shooter and are familiar with these safety instruction procedures, or have some or no familiarity with handling a gun, it is imperative that you read carefully and thoroughly this entire instruction manual and follow the safety instructions to ensure you are familiar with the proper and safe use of this firearm to prevent personal injury, death, or property damage.

WARNING:

• NEVER POINT A FIREARM AT SOMETHING THAT IS NOT SAFE TO SHOOT.

Never let the muzzle of a firearm point at any part of your body or at another person. This is especially important when loading or unloading the firearm. When you are shooting at a target, know what is behind it. Some bullets can travel over a mile. If you miss your target or if the bullet penetrates the target, it is your responsibility to ensure that the shot does not cause unintended injury or damage.

• ALWAYS TREAT A FIREARM AS IF IT WERE LOADED.

Never assume that a firearm is unloaded. The only certain way to ensure that a firearm has the chamber empty is to open the chamber and visually examine the inside to see if a round is present. Removing the magazine will not guarantee that a firearm is unloaded or cannot fire. Shotguns and rifles can be checked by cycling or removing all rounds and by then opening and inspecting the chamber and the magazine tube for any remaining rounds.

• KNOW THE SAFETY FEATURES OF THE FIREARM YOU ARE USING, BUT REMEMBER: SAFETY DEVICES ARE NOT A SUBSTITUTE FOR SAFE HANDLING PROCEDURES.

Never rely solely on a safety device to prevent an accident. It is imperative that you know and use the safety features of the particular firearm you are handling, but accidents can best be prevented by following the safe handling procedures described in these safety rules and elsewhere in the product manual. To further familiarize yourself with the proper use of this or other firearms, take a Firearms Safety Course taught by an expert in firearms use and safety procedures.

• NEVER TRANSPORT A LOADED FIREARM.

Unload a firearm before putting it in a vehicle (chamber empty, magazine empty). Hunters and target shooters should load their firearm only at their destination. If you carry a firearm for self-protection, leaving the chamber unloaded can reduce the chance of accidental discharge.

• AVOID ALCOHOLIC BEVERAGES OR JUDGMENT/REFLEX IMPAIRING MEDICATION WHEN SHOOTING.

Do not drink and shoot. If you take medication that can impair motor reactions or judgment, do not handle a firearm while you are under the influence of the medication.

• ALWAYS WEAR PROTECTIVE GLASSES AND EARPLUGS WHEN SHOOTING.

The chance that gas, gunpowder or metal fragments will blow back and injure a shooter who is firing a gun is rare, but the injury that can be sustained in such circumstances is severe, including the possible loss of



• Make sure your gun is not loaded before cleaning, storing, traveling, laying it down, or handing it to another person.

• STORE YOUR FIREARM SO THAT CHILDREN CANNOT GAIN ACCESS TO IT.

It is your responsibility to insure that children under the age of 18 or other unauthorized persons do not gain access to your firearm. To reduce the risk of accidents involving children, unload your firearm, lock it and store the ammunition in a separate locked location. Please note that devices intended to prevent accidents - for example, cable locks, chamber plugs, etc. - may not prevent use or misuse of your firearm by a determined person. Steel gun safes may be more appropriate to reduce the likelihood of intentional misuse of a firearm by an unauthorized child or person.

• Black powder and percussion caps must be stored in separate locations, preferably in their original containers.

• LEAD WARNING.

Discharging firearms in poorly ventilated areas, cleaning firearms or handling ammunition may result in exposure to lead and other substances known to cause birth defects, reproductive harm, and other serious physical injury. Have adequate ventilation at all times. Wash hands thoroughly after exposure.

• PROPERLY MAINTAIN YOUR FIREARM.

Store and carry your firearm so that dirt or lint does not accumulate in the working parts. Clean and oil your firearm, following the instructions provided in this manual, after each use to prevent corrosion, damage to the barrel or accumulation of impurities which can prevent use of the gun in an emergency. Always check the barrel prior to loading to ensure that it is clean and free from obstructions. Firing against an obstruction can rupture the barrel and injure yourself or others nearby.

In case you hear an unusual noise when shooting, stop firing immediately, engage the manual safety and unload the firearm. Make sure the chamber and the barrel are free from any obstruction or possible bullet blocked inside the barrel due to defective or improper ammunition.



PRECAUTIONS

Read and understand all the following precautions before removing this firearm from the package.

The United States I.R.S., B.A.T.F. and treasury department classifies this product as a firearm or dangerous weapon; therefore, it is potentially lethal.

WARNING: Careless and improper handling of this gun could result in unintended discharge causing injury, death or property damage. Safety must be the first and constant consideration when handling a firearm and ammunition.

CAUTION: Prior to removing this gun from its packaging, and prior to loading and shooting, carefully and thoroughly read this entire instruction manual which advises on the gun's proper functioning and handling. If you are unsure of anything, or have little experience or are unfamiliar with firearms, contact your local gun club, NRA approved instructor, or directly contact the National Rifle Association, Washington, D.C. 20036. Firearm safety is your responsibility and your safety and that of your family and others depend on your responsible, safe use.

NOTICE - DISCLAIMER OF LIABILITY

A. Uberti S.p.A. shall not be responsible for product malfunction or for physical injury, death, or property damage from the gun's intentional or accidental discharge, its criminal or negligent use, improper or careless handling, unauthorized modifications, corrosion or other failure to maintain, use of defective, improper, hand-loader or reloaded ammunition, or other than original, good condition, high quality, commercially manufactured ammunition, or from its use for purposes or subjection to treatments for which it was not designed. A. Uberti S.p.A. will not honor claims made by the second or subsequent owners of the firearm.

While this firearm was tested, carefully inspected, and packaged before it left the factory, A. Uberti S.p.A. cannot thereafter control product handling. Please be sure to examine this firearm carefully



eyesight. A shooter must always wear impact resistant shooting glasses when firing any firearm. Earplugs help reduce the chance of hearing damage from shooting.

• ALWAYS CHECK THE BARREL BORE, CHAMBER AND ACTION TO ENSURE THEY ARE PERFECTLY CLEAN AND CLEAR OF OBSTRUCTIONS.

Clean a fouled gun immediately for correct and safe function. DO NOT SMOKE WHILE HANDLING, LOADING OR SHOOTING ANY AMMUNITION, ESPECIALLY BLACK POWDER. Keep black powder in a closed container at all times, reclosing the container after each and every use.

• USE PROPER AMMUNITION

Only use factory-loaded, new ammunition manufactured to industry specifications: CIP (Europe and elsewhere), SAAMI (U.S.A.). Be certain that each round you use is in the proper caliber or gauge and type for the particular firearm. The caliber or gauge of the firearm is clearly marked on the barrels of shotguns and on the slide or barrel of pistols. The use of reloaded or remanufactured ammunition can increase the likelihood of excessive cartridge pressures, casehead ruptures or other defects in the ammunition which can cause damage to your firearm and injury to yourself or others nearby.

Always use an individual charge from ei powder measure when loading a muzzleloading gun, never charging directly from a powder flask.

• NEVER SHOOT AT WATER OR AT A HARD SURFACE.

Shooting at the surface of water or at a rock or other hard surface increases the chance of ricochets or fragmentation of the bullet or shot, which can result in the projectile striking an unintended or peripheral target.

• Never shoot the gun near an animal, as the animal could be startled and create an accident.

• Never engage in "horseplay" while holding your gun.

• When selecting a place to shoot, always be absolutely sure of your target and the area behind it before you touch the trigger, making sure there is an adequate backstop which will stop and contain bullets. A bullet can travel through or past your target up to 1 1/2 miles. If you have any doubt, do not shoot.

• NEVER CLIMB A TREE FENCE OR OBSTRUCTION WITH A LOADED FIREARM.

Open and empty the chamber of your firearm and engage the manual safety before climbing or descending a tree or before climbing a fence or jumping over a ditch or obstruction. Never pull or push a loaded firearm toward yourself or another person.

• Never follow a companion with your gun loaded.

• Place the hammer forward only when you are ready to shoot. Never place or permit the hammer to remain in the half-cock notch as this is not a safe carrying position. You might end up accidentally perching the hammer on the lip of the half cock notch, which is extremely dangerous. The hammer in this condition could fall forward and discharge the gun, causing injury, death, or property damage.

• Do not put your finger inside the trigger guard until you have aimed the gun at the intended target and are imminently ready to safely shoot.

• Always be aware of other people around you. Keep spectators or others to your rear. Keep hands and face clear and keep others clear of the ejection port as ejected spent cartridges can cause injury.

• Always use extreme care with a misfire or failure to fire. Keep the gun pointed in a safe direction and wait one full minute. This is because if hangfire or slow ignition has occurred, the round will still fire. If the round fails to fire after waiting, remove the magazine, eject the round and examine the primer. Immediately refer to a competent gunsmith if you notice the firing pin indent on the primer is light, off-center, or does not exist. Dispose of misfired rounds according to the ammunition manufacturer's instructions.

• Immediately cease shooting if your gun fails to properly function. Never force a jammed action, which can cause a round to explode and cause personal injury, death, or damage to your gun or other property.

• Never leave a gun, especially a loaded gun, unattended as someone, especially a child, could accidentally shoot it causing injury, death, or property damage.

when purchased to ensure it is unloaded and undamaged. Your gun dealer will assist you in making this examination and answer any further questions in this regard.

AMMUNITION

AMMUNITION WARNING: Since your gun has been designed for specific caliber ammunition, use only commercially manufactured ammunition which pressure cannot be higher than

the ones stated by SAAMI or C.I.P. standards.

Factory ammunitions must be in excellent condition, of original high quality, and specifically recommended for the gun and nothing else.

Never use reloaded or hand-loaded ammunitions.

- The use of reloaded Ammunition voids the warranty.

Never carry the gun with a round in the chamber until ready to shoot.

Your gun has been designed for ammunition of a specific caliber - do not alter the barrel, chamber, caliber for which you gun was designed. Be sure you never mix ammunition.

- Use only ammunition specifically recommended for your firearm. (Proper Ammunition specified on barrel and cylinder).

SAFETY FEATURES

Safety devices, if used properly, can help minimize the danger of accidental firing.

NOTE: Read carefully your instruction manual on how to operate the safety devices on your gun. Safety devices on guns are extras and are not a substitute for your proper and safe handling practices.

WARRANTY NOTICE!!

CHARCOAL BLUE FINISH: Derives its name from the high-temperature fire blueing process involved in attaining the deep royal blue color. Charcoal Blue is *more delicate than standard blue*: the gun must be constantly oiled and with use will become a desirable smoke gray "patina" finish as on an antique gun.

NICKEL PLATED FINISH: This nickel plated finish is a superficial electrolytic process: these nickel plated firearms, after firing, the muzzle crown of the barrel and the cylinder may begin to show wear on close inspection. This is due to usage and is unavoidable.

WHITE FINISH: White finish is delicate. It is essential you look after your revolver.

Acidity from you hand creates rust, therefore the gun must be oiled after handling or simply touching. Remember, your gun is not Stainless Steel.

WOOD: The manufacturer does not warrant the wood (stock, forend and grips) with respect to finish, matching of pieces, dents, scratches, cuts and dings etc.

METAL: The manufacturer does not warrant the metal finish, wood to metal fit etc.

The manufacturer assumes no responsibility for improper or careless handling, unauthorized modifications, use of defective, improper, hand-loaded, reloaded or remanufactured ammunition, customer abuse or neglect of the product.

This warranty does not apply to normal wear or any parts, or if an unauthorized repair and/or alteration has been performed.

All are firearms are subject to proof testing at the Italian National Proof House and are proofed at much higher pressures than normal pressures. Furthermore, the chamber dimensions and head space are tested according to the Saami and C.I.P. regulations.



A. Uberti S.p.A.
25063 Gardone V.T. (Brescia) Italy - Via Artigiani, 1
Phone +39.030.83 41 800 - Telefax +39.030.83 41 801
E-mail: info@ubertireplicas.it - www.ubertireplicas.com