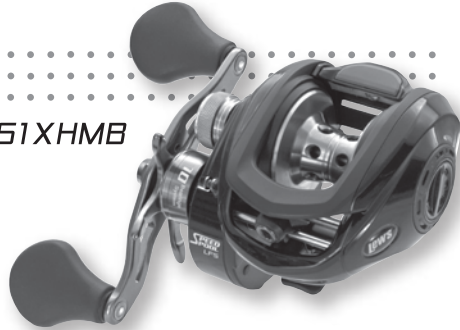




TOURNAMENT MB SPEED SPOOL® LFS

TS1SMB, TS1HMB, TS1SHMB, TS1XHMB



Speed Spool Baitcast reels are designed to be **Lighter, Faster and Stronger**

Driven by innovation – Fueled with Passion
Feel the Difference!

TOURNAMENT MB
SPEED SPOOL® LFS

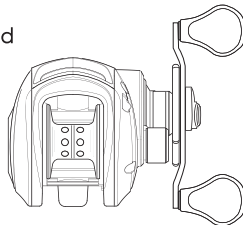
Reel Specifications

Model	Weight (oz.)	Gear Ratio	Line Capacity (yd./lb.)	IPT
TS1SMB	6.7	5.6:1	150/12	23"
TS1HMB	6.7	6.8:1	120/12	28"
TS1SHMB	6.7	7.5:1	120/12	31"
TS1XHMB	6.7	8.3:1	120/12	35"
TS1SMBL*	6.7	5.6:1	150/12	23"
TS1SHMBL*	6.7	7.5:1	120/12	31"

*Left hand retrieve.

FEATURES:

- One-piece, Lightweight Aluminum Frame
- Premium 10-bearing system with stainless steel double shielded ball bearings and Zero-Reverse One-way Clutch Bearing
- Deep Forged Double Anodized Aluminum U-spool
- Carbon Drag System up to 14 lbs. Drag
- Multi Setting Brake (MSB) system utilizes both magnetic and centrifugal braking to reduce backlash
- 85mm Bowed Aluminum Handle on TS1HMB, TS1SHMB and TS1SHMBL models
95mm Bowed Aluminum Handle on TS1SMB and TS1SMBL models



10 Bearing System

Performance – Right out of the Box!

Your Tournament MB baitcast reel by Lew's® is designed for performance and functionality. From the way it conforms to your hand, to the way it reacts crisply and effortlessly to your command, you'll know the minute you grab onto the Speed Spool® that you've got a quality reel.

Your Speed Spool® reel exploits several new developments which will allow you to set yourself apart from the competition.

High Strength Brass Gearing

The drive gear, crankshaft, and worm shaft are made of high strength brass for increased strength and durability. In addition to these advantages, brass provides exceptionally low friction to enhance efficiency.

One-piece Aluminum Frame

Your Speed Spool® reel utilizes a one-piece all aluminum frame. So you'll never have to worry about frame twisting or torquing.

Lightweight Machine Forged Aluminum Spool Machine Forged Aluminium Spool

The spool on your Lew's® reel has been engineered to maximize casting distance. Anodized to withstand oxidation and abrasion, machine forged and built for deep capacity.

Zero-Reverse Bearing

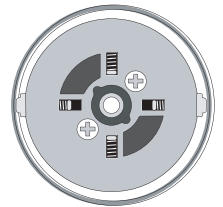
The handle on your Speed Spool® will only rotate forward for rock solid hook setting power. When you release the handle it will hold its position because of the Zero-Reverse one way clutch bearing, never losing an inch on your catch; an invaluable property to have when you're pulling it in.

10 Bearing System

Multi Setting Braking System (MSB)

In order to combat backlash your Tournament MB Speed Spool® reel features both an externally adjustable, full release magnetic brake system as well as an internally adjustable centrifugal brake system. The magnetic brakes give consistent braking throughout the entire cast and are adjusted by the palming side dial. The centrifugal brakes provide initial braking at the beginning of the cast to reduce backlash and can be turned off to reduce braking, by removing the palming sideplate and pushing the white pin(s) towards the center of the spool until they click. To turn them back on, push the white pin(s) away from the center of the spool until they click.

MSB
Multi Setting Brake



Cast Control System

A second feature exists to prevent backlash, the Cast Control System. An adjustment knob is found next to the star drag. The function saddles the spool shaft with steady pressure in order to stabilize spool speed.

To calibrate the system reel your lure in until it rests on the tip of the rod, then tighten the knob until taut. Depress the thumb bar, and holding the rod horizontally loosen the knob slowly until the lure begins to descend. The spool should continue to spin after the lure contacts the ground, but should not complete more than one full rotation. If the spool does not continue to spin, the knob is too tight. If the spool completes more than one rotation, the knob is too loose. Repeat until you have achieved the desired results.

Bowed Aluminum Handle

Our 85mm (95mm on TS1SMB and TS1SMBL) bowed aluminum handle will give you all the cranking power you need. The Lew's® custom SoftTouch contoured paddle is an added bonus known for its comfortable fit and ease for all day fishing.



TOURNAMENT MB SPEED SPOOL® LFS

TS15MB, TS1HMB, TS15HMB, TS1XHMB

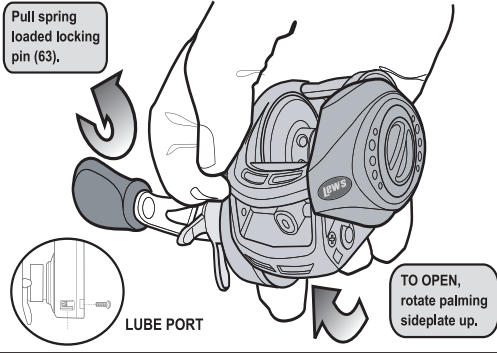
One Year Limited Warranty

Maintenance and Care

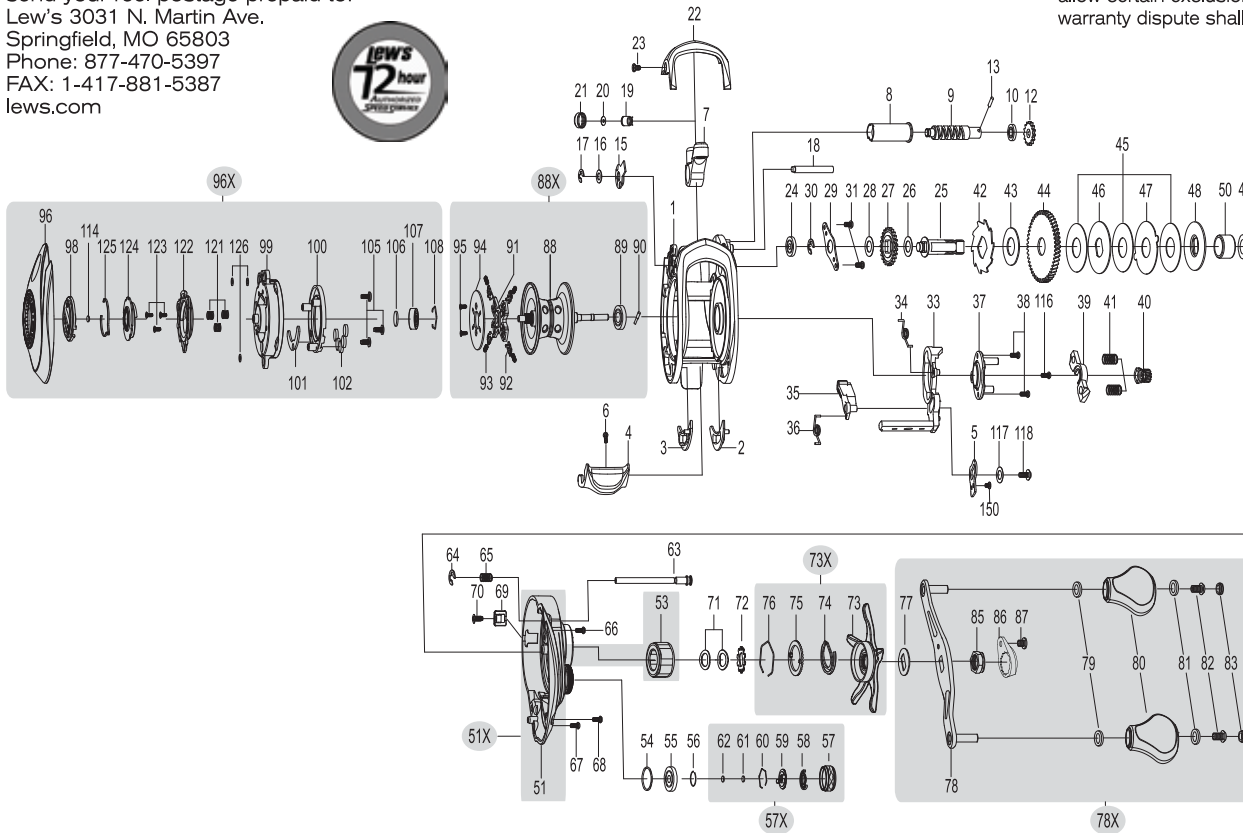
When applying lubricant to your Speed Spool® reel, avoid using multi-purpose oil. Use lightweight oils or greases made for fishing reels. Apply oil to all bearings, the crankshaft and the worm gear. Apply grease to the bushings, pinion gears, drive gears, and crank gears.

After usage, your reel should be inspected for dirt or sand and cleaned if excessive build-up is present. If your reel has come in contact with saltwater it is important to flush all parts with water, dry and re-lubricate your reel. Through diligent cleaning and maintenance your Lew's® reel will provide you with years of reliability and sound performance.

fig 1 To remove palming sideplate pull locking pin (63) away from reel body.



For professional cleaning and maintenance send your reel postage prepaid to:
Lew's 3031 N. Martin Ave.
Springfield, MO 65803
Phone: 877-470-5397
FAX: 1-417-881-5387
lews.com



Lew's® warrants its products¹ to withstand normal² use for the purpose designed and intended when manufactured for a period of one (1) year from the original retail sale date to the original retail consumer. Lew's® will at its option repair or replace³ Lew's® products when required for the warranty period and return⁴ the product to the owner at no additional⁵ cost to the owner.

¹Numerous products have been manufactured under variations of the Lew's® name and under the Lew's® Logo by multiple businesses over the past 50 years. This warranty is specifically for products manufactured on behalf of Lew's® of Springfield, Missouri USA since January 1, 2010. Lew's® products manufactured by or on behalf of other entities prior to January 1, 2010 are not covered by this warranty. In all circumstances, this Warranty is Limited in Value to the original retail value of the product and is limited to actual damage to the Lew's® product and only the Lew's® product. ²Loss of a product, and loss/damage of a product or parts due to the attempted repair or servicing of a Lew's® product by any person or business other than Lew's® or Lew's® Authorized Warranty Service Agent, and damage caused by or resulting from abuse, misuse, lack of recommended maintenance, accident, acts of God, and shipping damages occurring in transit to Lew's® or Lew's® Authorized Agent are outside the scope of Lew's® Limited Warranty and will be repaired through Lew's® after warranty services at the expense of the consumer. ³Any products replaced by Lew's® will be new or remanufactured by a Lew's® Authorized Agent with the same or next model upgrade product. ⁴Lew's® will return warranted products to the consumer by reasonable means as determined by Lew's®. ⁵Express or expedited services are the responsibility of the consumer as is sending the product to Lew's® or Lew's® Authorized Agent, for Warranty Service. Lew's® and Lew's® Service Agents as authorized by Lew's® are the sole agents authorized to repair or replace Lew's® products under the terms of this warranty. Only written changes by an officer of Lew's® can alter the terms or conditions of this warranty.

This warranty gives you specific legal rights including additional rights extended by some states which do not allow certain exclusions and limitations. Any action brought against Lew's® for the purpose of settling a warranty dispute shall be brought and litigated in the State of Missouri, County of Greene.

KEY #	PART NAME	KEY #	PART NAME	KEY #	PART NAME
1	FRAME	42	RATCHET	78X	HANDLE ASSEMBLY
2	CLUTCH BAR PLATE (A)	43	RATCHET WASHER	79	BALL BEARING (2)
3	CLUTCH BAR PLATE (B)	44	DRIVE GEAR	80	HANDLE KNOB (2)
4	CLUTCH BAR	45	DRAG WASHER (L-3)	81	BALL BEARING (2)
5	LINK PLATE	46	DRAG WASHER (D-1)	83	HANDLE KNOB SCREW (2)
6	CLUTCH BAR SCREW	47	DRAG WASHER (A)	85	HANDLE NUT
7	LEVELWIND ASSEMBLY	48	DRAG WASHER (D-2)	86	HANDLE NUT CAP
8	PIPE	49	SLEEVE WASHER (OPTIONAL)	87	HANDLE NUT RETAINER SCREW
9	WORM SHAFT	50	SLEEVE	88	SPOOL
10	BALL BEARING	51	GEAR SIDEPLATE	88X	SPOOL ASSEMBLY
12	IDLER(S)	51X	GEAR SIDEPLATE ASSEMBLY	89	BALL BEARING
13	WORM SHAFT PIN	53	ONE-WAY CLUTCH BEARING	90	PIN
15	WORM SHAFT BUSHING (B)	54	O-RING	96	PALMING SIDEPLATE
16	WORM SHAFT WASHER	55	BALL BEARING	96X	PALMING SIDEPLATE ASSEMBLY
17	E-RING	56	BEARING RETAINER	98	CONTROL DIAL
18	PILLAR	57	CAST CONTROL CAP	99	SPOOL COVER
19	LEVELWIND PIN	57X	CAST CONTROL CAP ASSEMBLY	100	MAGNET HOLDER-D
20	SPACER (OPTIONAL)	61	TENSION WASHER	101	MAGNET HOLDER PLATE-D
21	LEVELWIND NUT	62	SPOOL SPACER (B)	102	MAGNET (5)
22	FRONT COVER	63	LOCKING PIN	105	SPOOL COVER SCREW (3)
23	FRONT COVER SCREW (2)	64	E-RING	106	SPOOL SPACER
24	BALL BEARING	65	LOCKING PIN SPRING	107	BALL BEARING
25	CRANKSHAFT	66	GEAR SIDEPLATE SCREW (A)	108	BEARING RETAINER
26	IDLER (L) WASHER (A)	67	GEAR SIDEPLATE SCREW (B)	116	CAM PLATE SCREW
27	IDLER (L)	71	DRAG SPRING WASHER (A-2)	117	CLUTCH WASHER
28	IDLER(L) WASHER (B)	72	DRAG SPACER	118	CLUTCH SCREW
29	BEARING PLATE	73	STAR DRAG	121	SPRING (3)
30	E-RING	73X	STAR DRAG ASSEMBLY	122	SLIDE CAM-H
31	BEARING PLATE SCREW	74	CLICK SPRING	123	SLIDE CAM-H SCREW (3)
33	CLUTCH CAM	75	CLICK PLATE-B	124	SLIDE CAM-D
39	PINION YOKE	76	CLICK PLATE RETAINER	126	SPOOL COVER SPACER (3) OPTIONAL
40	PINION GEAR	77	LEAF SPRING	150	LINK PLATE SCREW
41	PINION YOKE SPRING (2)	78	HANDLE		