

SABRE®

SMART PEPPER SPRAY

SPS-14-BK User Manual

**Security Equipment
Corporation**

747 Sun Park Drive
Fenton Missouri 63026 USA
Phone: 636-343-0200
Toll Free: 800-325-9568

www.sabred.com



Product Specifications

- Formula: SABRE RED
- Spray Pattern: Powerful Stream
- Bursts: 25 (Up to 5x the amount of other brands)
- Spray Distance: 10 Feet
- Bluetooth Range: 30 Feet

Included Accessories

- SABRE Red ½ oz Canister
- SABRE ½ oz Practice Canister
- USB Charging Cable
- Free SABRE App

What does SABRE® Pepper Spray do?

- Involuntary eye closure
- Difficulty breathing
- Facial burning
- Psychological symptoms (fear, anxiety & panic)
- More at sabrered.com/effects

When should I use my SABRE® Pepper Spray?

- Carry it with you at all times!
- Deploy when you feel your safety is in jeopardy or you are attacked, then run and alert the police immediately — do not try to capture your attacker.
- Product is designed to be used in the upright position only.
- We recommend replacing the Pepper Spray after deployment, to make sure you're always fully protected.
- Be sure to always inspect the expiration date found on the canister, never use if expired.

Active Ingredients

- Oleoresin Capsicum (Red Pepper). AVOID CONTACT WITH YOUR SKIN AND EYES

In case of skin contact...

- Remove contaminated clothing immediately
- Flush skin 15-20 minutes with soap and cold water, repeat as necessary
- Do not rub, or use creams, salves or oils
- Consult a physician if irritation persists

In case of eye contact...

- Carefully remove & discard contact lenses
- Flush eyes with cold water for 15 minutes
- Get prompt medical attention



WARNING

FOR SELF-DEFENSE ONLY. The use of this substance or device for any purpose other than self-defense is a crime under the law. Illegal use of this unit is punishable by imprisonment, fines or both. Not to be purchased or possessed by minors, felons, anyone addicted to narcotics or where prohibited by law. N.Y. — This device shall not be sold by anyone other than a licensed or authorized dealer. Violators may be prosecuted under the law. FAA regulates carrying self-defense pepper sprays on airplanes. Contents are dangerous - use with care.

CAUTION: CONTENTS UNDER PRESSURE.

Do not puncture or incinerate can. Do not expose to heat or store above 120°F (50°C). Each canister states expiration date. KEEP OUT OF THE REACH OF CHILDREN. Read and follow enclosed instructions before using.

SABRE Smart Pepper Spray Instructions



Charging Cord



Spacer



Canisters



The SABRE Smart Pepper Spray comes empty. Before loading the Pepper Spray canister it is recommended that you first use the supplied Practice canister to familiarize yourself with the product.

WARNING

To prevent misfiring always make sure the red Spacer is properly installed before loading/unloading.

Loading the SABRE Smart Pepper Spray

- Make sure Spacer is properly installed under lid before loading



Spacer Removed



Spacer Installed

- To install the Spacer, lift open the top lid and place the Spacer over the actuator as shown in image.
- The Spacer is properly installed when it is fitted over the actuator button and allows the top lid to close flat.

- Once the Spacer is in place, unscrew the base (bottom piece) of the SABRE Smart Pepper Spray and set aside



Base Removal

- Place thumb over the top lid with "S" and keep thumb in place during next steps



Thumb Over Top Lid

- Take the SABRE Practice Canister and place it, valve tip first, inside the SABRE Smart Pepper Spray case



Loading Canister

- Pick up the SABRE Smart Pepper Spray case, gripping it so the front spray position is pointed away from you
- Re-attach the base of the Smart Pepper Spray case by screwing into the bottom clockwise until it's completely tight



Re-attach Base

- The Canister should now be loaded inside and is ready for use
- Lift the top lid and carefully remove the Spacer



Removing Spacer

- Keep the Spacer in a safe place; it will be needed for future canister loading and unloading
- Always remove the Spacer before attempting to fire
- Its recommended to test fire the product outside in a well-ventilated area with the spray pointing away from you to ensure the canister was loaded properly. We recommend not pairing your pepper spray to the SABRE App until after test-fire to avoid sending a false alert.
- Watch training video at <https://www.sabrered.com/sabre-app-videos>
- Pair SABRE Smart Pepper Spray with SABRE App. The SABRE Smart Pepper Spray is now ready to use

To spray your SABRE Smart Pepper Spray

- Remember to always remove the Spacer before attempting to fire!
- Slide thumb under protective cover onto actuator button
- Aim at your target
- Press down to deploy SABRE Red Pepper Spray
- Fire ear to ear across the eyes. Once eyes are affected, aim for nose and mouth
- A stream will reach up to 10' (3 m) in front of you
- Shield face when firing into the wind
- Release pressure to stop firing
- Sidestep and escape to safety

When you sense that you are in a potentially dangerous situation, have your Pepper Spray in hand and ready to use.

To Replace the Pepper Spray Canister

- It's best to unpair the Pepper Spray from the SABRE App before replacing the canister to avoid accidentally alerting the alarm in the App.



Unpair Device

- Canister should only be replaced outside in a well-ventilated area with the spray pointing away from you
- **CAUTION:** You must install the Spacer before replacing the canister. See page 5 for Spacer instructions.
- To replace the canister first unscrew the base of the Smart Pepper Spray by twisting the bottom counter-clockwise
- Remove the used canister by grasping the bottom of the canister with your fingers and pulling straight out
- Once the used canister is removed, set aside and pick up replacement canister
- Insert the new canister in SABRE Smart Pepper Spray case with the plastic valve tip at the top
- Once canister is inside, re-attach the base of the housing and screw completely on, canister will automatically connect to actuator
- Test fire the product outside in a well-ventilated area with the spray pointing away from you. We recommend not pairing the Smart Pepper Spray to the SABRE App until after test-fire, to avoid sending a false alert.

- Pair SABRE Smart Pepper Spray with SABRE App. The SABRE Smart Pepper Spray is now ready to use
- Additional replacement canisters can be purchased at SabreRed.com

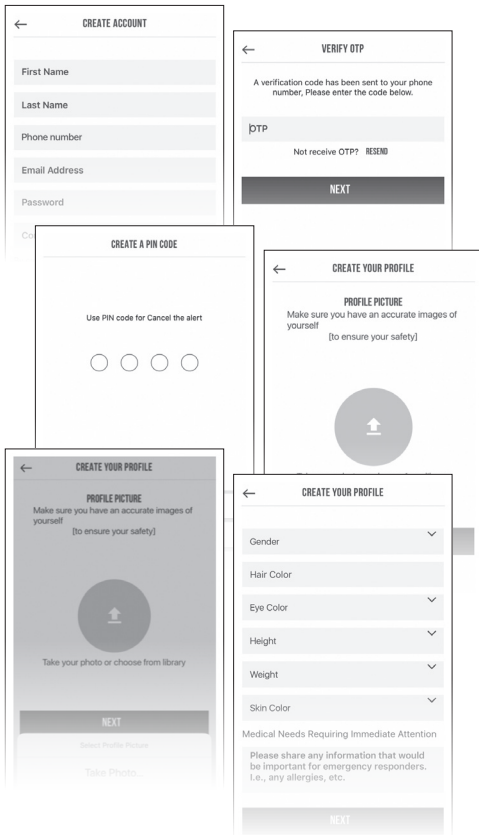
Now that you are familiar with how to use the SABRE Smart Pepper Spray download the SABRE App and create an account to link with the device!

- Download SABRE App from the App Store (iOS), Android or Google Play
- Follow user prompts by accepting Terms and Conditions
- Standard text and data rates apply for these services.
- Create account – Create your user profile and enter information that can be used to identify you in case of emergency
- OTP Verification – To complete account set up, SMS OTP Verification must be completed by entering the one-time password verification code that will be sent to the app user's phone number. Code will be sent by SMS text and will need to be entered into the app for verification.
- If you prefer to receive OTP Verification via phone, select this option when prompted.

NOTE: If you do not receive OTP Verification text, select the phone call option or contact your cellular carrier to ensure they are not restricting SMS OTP texts.

- Create Pin Code – Create a 4-digit code that is your security password when using the app for quick authorization

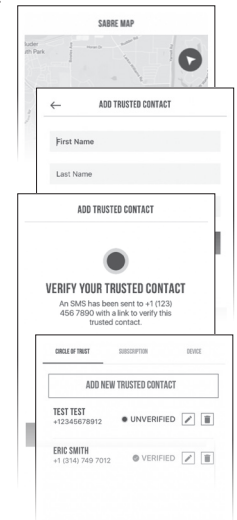
- Create Your Profile – First create a profile picture either by taking a photo or choosing from your photo library. Once completed you will be prompted to the next screen for Gender, Hair Color, Eye Color, Height, Weight, Skin Color, and Medical Issues for Immediate Attention. This information will be important for emergency responders and only used for this purpose.



You are now in the SABRE App Home Map Screen. To get the most out of your product you will need to enter information for your Circle of Trust, the individuals you identify to send alerts to in the event of an emergency.

- Enter Circle of Trust Contacts – From the SABRE Home Map Screen choose the “User Icon” in the bottom right hand of screen. Then click “ADD NEW TRUSTED CONTACT” and enter the information (You may also choose from your Contact List by clicking contact icon in phone number box). Once entered, a SMS text will be sent to verify your Trusted Contact.

- Verify Trusted Contact – As an extra safety precaution, the added Trusted Contact must verify to be alerted by simply clicking the link in the SMS text they receive. Prior to adding a contact to your Circle of Trust, it’s best to notify each person that they will be receiving a link. They will need to click on the link to verify they accept to receive notifications from the SABRE App. Once verified, when you pull down the Trusted Contact screen to refresh a green checkmark will appear next to the Trusted Contact name. It will appear as “unverified” until the Trusted contact clicks the SMS link that was sent to them.

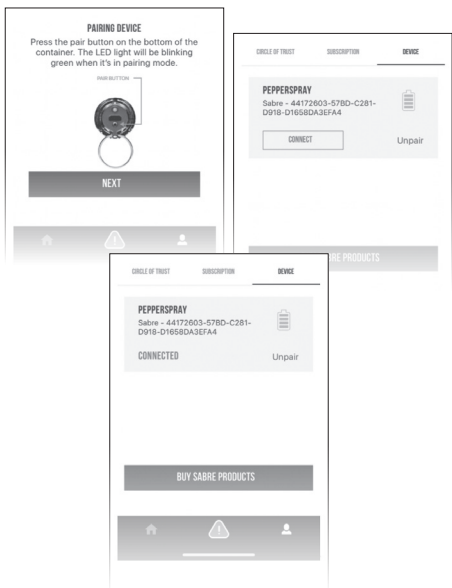


- You can add up to 5 contacts to your Circle of Trust. Once verified, all contacts you have added in your Circle of Trust are notified with every alert.

Pairing SABRE Smart Pepper Spray with the SABRE App

Within SABRE App from the Settings Menu, choose Device Management

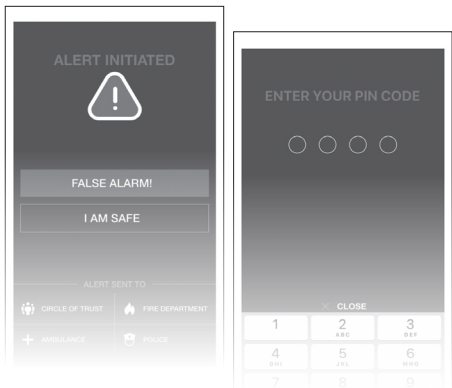
- From Device Management Menu, Choose Pair Device on App
- Keep your Bluetooth device within 3 feet (1 meter) when pairing
- Press the pair button on the bottom of the Smart Pepper Spray as seen in below image
- The LED light on the device will flash green when it's in pairing mode
- Select “Pair” on SABRE App while green light is flashing to pair. Pairing successful will be displayed on the App screen.



The SABRE App can also be used if the Smart Pepper Spray is not connected, by opening the alert screen and tapping the Alert button. This was designed in case you are in a situation without your Smart Pepper Spray and do not feel safe. You can always be prepared.

Alert Initiated

- When the SABRE Smart Pepper Spray is deployed an alert is triggered through Bluetooth transmission to your SABRE App.
- Verified Trusted Contacts will receive SMS emergency alert text with a link showing the location where the device was deployed. It will continue to share the user's geo-location with the Trusted Contacts until the user opens the app and either chooses “False Alarm” or “I Am Safe”.
- The Security PIN must be correctly entered to cancel the alert. This is for your protection to verify your identity, in case your phone was stolen by the attacker.
 - False Alarm – should be used if the product was accidentally used and there is no immediate danger.
 - I Am Safe – should be used when the user is no longer in a dangerous situation and does not require help.
- Once PIN is entered the Trusted Contacts will receive a notification that you are no longer in danger and location will no longer be shared.



- When alarm is initiated the user will receive a text from Noonlight inquiring about the alert. If a response to the text is not sent, a Noonlight dispatcher will call the user's mobile phone immediately.
- If the user does not respond to text/phone call Noonlight will dispatch first responders to your location.

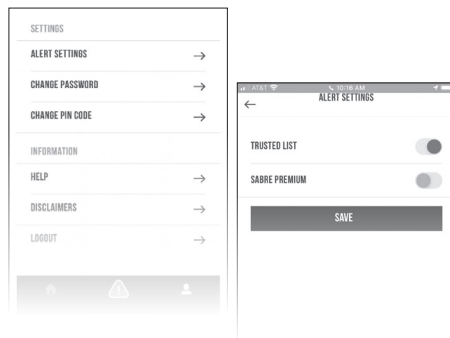
Settings

To access Settings menu, first go to the Profile page by clicking the icon on the right at the bottom of the screen. Settings menu is located in the top right corner of the Profile page.

911 Alert Integration - Premium Option

SABRE has teamed up with Noonlight to offer upgraded protection.

- The SABRE App was built with an extra layer of protection that alerts local police, ambulance and fire department in addition to your Circle of Trust. When an alert is initiated, Noonlight dispatchers receive the alert and will contact the user via text to provide emergency assistance.
- Noonlight alerts local authorities when your SABRE Smart Pepper Spray is deployed. Authorities are able to track your location as well as see where your device was deployed
- For a small monthly fee you can subscribe to SABRE Premium for this additional protection service from the user screen.
 - Click Subscription in the middle of user screen and upgrade now. You will automatically be directed to the App store to process payment for the subscription. You will be directed back to the SABRE App once completed.
- With this option activated you can now alert your Circle of Trust as well as local authorities.



Alert Settings

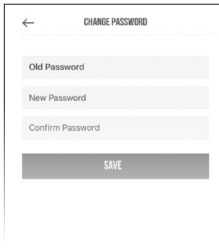
Designate who you want to alert in case of an emergency with a simple toggle of the switch.

- On- button will appear red and in the right position. Alert will be sent.
- Off- the button will appear gray and in the left position. Alert will not be sent.

NOTE: First Responders (Fire Department, Ambulance, Police) alerts are only available with SABRE Premium subscription service. See page 14 of manual for details.

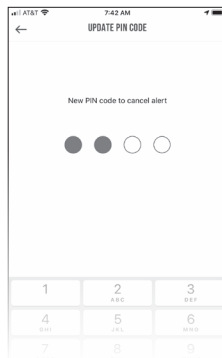
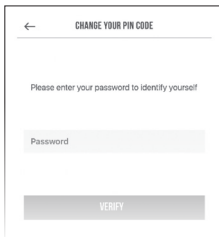
Change Password

- To change your password, you will first be required to enter your current password.
- Enter new password and confirm by typing the same password. These must match to Save and update password.



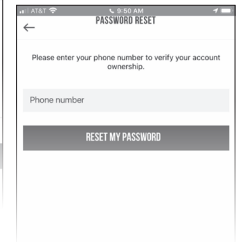
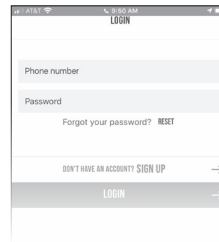
Change PIN Code

- To change your 4-digit PIN code, you will first be required to enter your current PIN code.
- You will then be prompted to update your PIN with a new 4-digit code. Once entered you will need to confirm your pin code on the next screen to Save and update the PIN.



Forgot Your Password

- If can't remember your password and need to reset, click RESET from the Log In screen.
- You will then be prompted to the next screen to enter your phone number for account verification. Once entered, an OTP code will be sent via SMS text.
- Follow the prompts to reset your password.
- If you do not receive OTP text verification code, contact your carrier to ensure SMS OTP text are not being blocked.



SABRE App Tips

The SABRE App was designed with your safety in mind. Features of the SABRE App will only work when Cellular Device is paired with SABRE Smart Pepper Spray. Always make sure the products are paired before use. The GPS coordinates sent to your Circle of Trust as text messages are sent from your mobile phone's internal GPS chip, location accuracy is based on carrier's network capability. Message and data rates may apply.

To ensure you are getting the most out of this product its best to familiarize yourself with the app before use and to consider the following:

- At least one contact must be added and verified to alert Trusted Contacts in the event of an emergency

- Alert Settings must be turned on for Trusted List and/or Premium Service (local authorities) for alerts to be sent. In Alert Setting screen, the toggle button will be red and in the right-side position.
- Location services must be active to send your location to Circle of Trust, SABRE must ALWAYS be allowed to use location services to use this feature.
- Bluetooth must be turned on at all times and shared with SABRE App
- You must have an internet-enabled mobile phone or device using either the iOS or Android operating system in order to access the Services and data coverage must ALWAYS be turned on
- SABRE App must be running (can be running in the background)
- Background refresh App must be turned on
- SABRE Smart Pepper Spray must be paired and in range of your mobile device (up to 30 feet range)
- Battery must be charge both on the Smart Pepper Spray and mobile device
- Always test product prior to use
- If you do not receive OTP text verification code, contact carrier to ensure SMS OTP text are not being blocked. If OTP text verification is blocked, you can alternately use the OTP phone call verification.

Charging Battery

The integrated battery comes partially charged and is located at the base of the Smart Pepper Spray. Charge the battery by inserting the supplied Micro USB cord into the underside of the base and connecting the standard USB side of the cord into a computer or other USB charging source.

To Determine Battery Charge:

When the SABRE Smart Pepper Spray is paired with your mobile phone, the battery life indicator is displayed within the SABRE App on the Device screen, located in your Profile page. When the battery is fully charged the indicator will show 4 solid green bars. When the battery is low the indicator will show only 1 solid red bar; the device should be charged immediately.



Battery Life Indicator

The SABRE Smart Pepper Spray itself also has a battery life indicator. To check the battery life, press the button on the underside of the base.

- Green blinking Light = 100% - 30% Battery Life
- Yellow blinking light = 29% - 11% Battery Life
- Red blinking light = 10% or less Battery Life – charge immediately



This device complies with Part 15 of the FCC Rules. Operation is subject to the following two conditions:

- (1) This device may not cause harmful interference, and
- (2) this device must accept any interference received, including interference that may cause undesired operation.

This equipment has been tested and found to comply with the limits for a Class B digital device, pursuant to part 15 of the FCC Rules. These limits are designed to provide reasonable protection against harmful interference a residential installation. This equipment generates, uses and can radiate radio frequency energy and, if not installed and used in accordance with the instructions, may cause harmful interference to radio communications. However, there is no guarantee that interference will not occur in a particular installation. If this equipment does cause harmful interference to radio or television reception, which can be determined by turning the equipment off and on, the user is encouraged to try to correct the interference by one or more of the following measures:

- Reorient or relocate the receiving antenna.
- Increase the separation between the equipment and receiver.
- Connect the equipment into an outlet on a circuit different from that to which the receiver is connected.
- Consult the dealer or an experienced radio/TV technician for help.

MODIFICATION: Any changes or modifications not expressly approved by the grantee of this device could void the user's authority to operate the device.

SABRE SMART PEPPER SPRAY Warranty Information:

The Smart Pepper Spray device is covered under a 1-year limited warranty from the date of purchase. Proof of purchase is required.

LIMITED WARRANTY: If this product fails to work at any time before its expiration date due to a manufacturing defect, return it to Security Equipment Corporation for a replacement. The warranty does not cover products which have been abused, altered or damaged. TO THE EXTENT PERMITTED BY LAW, SECURITY EQUIPMENT CORPORATION DISCLAIMS ALL OTHER IMPLIED OR EXPRESS WARRANTIES OF MERCHANTABILITY AND/OR FITNESS FOR A PARTICULAR PURPOSE.

LIMITATION OF LIABILITY: This limited warranty is your sole remedy and SECURITY EQUIPMENT CORPORATION shall not be liable for any damages, whether direct, indirect, incidental, special, consequential, exemplar or otherwise, including lost revenues and lost profits, arising out of any theory of recover, including statutory, contract or tort. In no event will SECURITY EQUIPMENT CORPORATION'S entire liability exceed the purchase price of this product. Some states and provinces do not allow the exclusion or limitations of incidental or consequential damages so the above limitations or exclusions do not apply to you. This limited warranty gives you specific legal rights, and you may also have other rights which vary from state to state and province to province.

Disclaimers

- Normal carrier charges and taxes may apply to any content you obtain from the Services. SABRE is not responsible for any surcharges you incur from your mobile phone or internet service provider as a result of the use of the Services.
- Features of the SABRE App require cellular device and SABRE Smart Pepper Spray to be in range of one another at all times. It is recommended that the cellular device and SABRE Smart Pepper Spray stay within 30 Feet from each other to avoid the risk of unpairing.
- The SABRE App will send a notification if the Smart Pepper Spray becomes unpaired; always ensure your Smart Pepper Spray is paired.
- If the product unpairs for whatever reason SABRE is not responsible in the event of an emergency.
- Features of the SABRE App require product and mobile device to be charged. If the device or mobile phone batteries are not properly charged and maintained, SABRE is not responsible in the event of an emergency.
- Features of the SABRE App require software to always be up to date and the most current available version is required to operate.
- Both the Premium Noonlight 1st Responders Alert Service and Circle of Trust location texts require cellular service network to function properly. If you are in an area where network is unavailable you should not rely solely on SABRE App. These features are designed for residents of the contiguous U.S., Alaska, and Hawaii. SABRE makes no representations that the Service is appropriate or available for use in other locations. Those who access or use

the Service from other jurisdictions do so at their own volition and are entirely responsible for compliance with all applicable United States and local laws and regulations.

- Without limiting the generality of the foregoing, we expressly disclaim all liability for service defect or failure, claims that are due to normal wear, service misuse, abuse, service modification, improper service selection and non-compliance with any written directions.
- You understand and agree that any alerts provided to you through the Service may be delayed or prevented by a variety of factors. SABRE does its best to provide alerts in a timely manner with accurate information. However, we neither guarantee the delivery nor the accuracy of the content of any alert. You also agree that SABRE shall not be liable for any delays, failure to deliver, or misdirected delivery of any alert; for any errors in the content of an alert; or for any actions taken or not taken by you or any third party in reliance on an alert.
- SABRE is not responsible if SABRE Smart Pepper Spray is damaged or dropped in water and is no longer able to function properly.
- SABRE does not give any warranty or other assurance as to the operation, quality or functionality of the application. Access to the application may be interrupted, restricted or delayed for any reason.
- Full use of SABRE Service is dependent upon your use of a cellphone with adequate software, supported mobile cellular device with Internet access, Bluetooth technology, and uninterrupted telephone service. The maintenance and security of this equipment may influence the performance of the SABRE Service and it is your responsibility to ensure the functionality of the equipment.

- SABRE does not give any warranty or other assurance as to the operation, quality or functionality of the application. Access to the application may be interrupted, restricted or delayed for any reason.

Location-based Service

The Service makes use of detailed location information, which includes GPS signals sent by your mobile device to and from the App.

Accordingly, you must allow the App to access your location at all times in order for the Service to function. After your SABRE Smart Pepper Spray has been deployed, to the extent you have opted into the sending of such alerts, SABRE will make your location available to (1) your Circle of Trust for display and tracking through Google maps until the user indicates they are safe or cancels their alarm; and/or (2) Emergency 1st responders, if you opted into the subscription-based Premium Services.

Cellular Service and Bluetooth Connectivity Required

A cellular connection between your mobile device and your cellular provider is required to use the Service (“Cellular Connection”). You are responsible for obtaining the data network access necessary to use the Service. Your mobile network’s data and messaging rates and fees may apply if you access or use the Service from your device. You are responsible for acquiring and updating compatible hardware or devices necessary to access and use the Service and Applications and any updates.

A Bluetooth connection between your mobile device and the SABRE Smart Pepper Spray is also required to use the Service (“Bluetooth Connection”). You are responsible for your mobile devices and SABRE Smart Pepper Spray’s

respective Bluetooth beacons’ functioning properly and being paired. The SABRE Smart Pepper Spray must be within reach of your mobile device’s Bluetooth transmitter. For the Bluetooth beacon to function properly, the SABRE Smart Pepper Spray must be charged. Your SABRE Smart Pepper Spray has a sufficient charge when the light on the handle emits a “green” light, indicating the device has a battery charge of at least 30%. A “yellow” light indicates a battery charge of 11-29%. A “red” light indicates a battery charge of 10% or less.

NOTE: the App must be open and running on your mobile device for the SABRE Smart Pepper Spray’s Bluetooth beacon to connect to the App.

With respect to the Cellular Connection and Bluetooth Connection, SABRE does not guarantee that the Service will function on any particular hardware or devices. In addition, the Service may be subject to malfunctions and delays inherent in the use of the data networks, electronic communications, or Bluetooth connectivity. There will be times when access to the Service is interrupted for maintenance, upgrades, or emergency repairs or for reasons that are beyond our control, including the failure of telecommunication lines, communication links, and computer or telecommunication equipment. Although we will make reasonable efforts to minimize these issues if it is within our reasonable control to do so, you agree that we will not in any way be liable or responsible to you for any interruptions, modification, suspension, or disruption of your access to or use of the Service.

Disclaimer of Warranties

THE SERVICE IS PROVIDED "AS IS". WE DO NOT WARRANT OR MAKE ANY PROMISES REGARDING THE CORRECTNESS, USEFULNESS, ACCURACY, AVAILABILITY, OR RELIABILITY OF (i) YOUR USE OR THE RESULTS OF YOUR USE OF THE SERVICE; (ii) ANY ADVICE YOU GLEAN FROM THE Service WHETHER PROVIDED BY US OR A THIRD PARTY; OR (iii) ANY OTHER CONTENT AVAILABLE THROUGH THE SERVICE. WE DO NOT PROMISE THAT THE Service WILL BE UNINTERRUPTED OR WILL BE ERROR-FREE, OR THAT ANY DEFECTS WILL BE CORRECTED. THERE IS NO WARRANTY OF ANY KIND, INCLUDING, WITHOUT LIMITATION, ANY WARRANTY OF TITLE, MERCHANTABILITY, NON-INFRINGEMENT, OR FITNESS FOR A PARTICULAR PURPOSE. NO ADDITIONAL STATEMENTS OUTSIDE THE TERMS OF THIS AGREEMENT, INCLUDING, WITHOUT LIMITATION, STATEMENTS REGARDING CAPACITY, SUITABILITY FOR USE OR PERFORMANCE, WHETHER MADE BY OUR EMPLOYEES OR OTHERWISE, IS A WARRANTY OR PROMISE BY US AND WE HAVE NO RESPONSIBILITY OR LIABILITY FOR ANY SUCH STATEMENTS. WE WILL HAVE NO RESPONSIBILITY FOR THE TIMELINESS, DELETION, MIS-DELIVERY, OR FAILURE TO STORE ANY COMMUNICATION OR CONTENT.

SOME STATES OR JURISDICTIONS DO NOT ALLOW THE EXCLUSION OF IMPLIED WARRANTIES OR LIMITATIONS ON HOW LONG AN IMPLIED WARRANTY MAY LAST. IN THE EVENT THE EXCLUSION OF IMPLIED WARRANTIES OR LIMITATIONS CONTAINED IN THESE TERMS OF SERVICE SHALL BE DETERMINED BY A COURT TO BE INVALID OR UNENFORCEABLE, THEN SUCH PROVISIONS SHALL BE REFORMED TO THE MAXIMUM LIMITATION PERMITTED BY APPLICABLE LAW. TO THE EXTENT PERMISSIBLE, ANY IMPLIED WARRANTIES ARE LIMITED TO 90 DAYS FROM THE DATE OF ACCESS.

NOTES

Security Equipment Corporation

747 Sun Park Drive
Fenton Missouri 63026 USA
Phone: 636-343-0200
Toll Free: 800-325-9568

www.sabrered.com