



MODEL: SARPA

- SAR P/A 12GA 3 28"1MC BL"
- SAR P/A 12GA 3 28"1MC CAMO"
- SAR P/A 12GA 3.5 26"1MC BL"
- SAR P/A 12GA 3.5 28"18.5"1MCBL"
- SAR P/A 12GA 3.5 28"1MC BL"
- SAR P/A 12GA 3.5 28"1MC CAMO"
- SAR P/A 20GA 3 20"1MC BL"
- SAR P/A 20GA 3 22"1MC BL YTH"
- SAR P/A 20GA 3 22"1MC CAMO YT"
- SAR P/A 20GA 3 26"1MC BL"
- SAR P/A 20GA 3 26"1MC CAMO"



PUMP ACTION Shotguns

INSTRUCTION and MAINTENANCE MANUAL

USSG, INC. MODEL SARPA PUMP ACTION SHOTGUN

WARNINGS AND INSTRUCTION MANUAL PLEASE READ THESE INSTRUCTIONS

MODEL NUMBER SARPA	BARREL LENGTH 18.5", 20", 24", 26", 28", 30", 32"	GAUGES 12, 20, 16, 410, 28
TYPE PUMP ACTION SHOTGUN		FINISH BLUE, CAMO

GENERAL INFORMATION:

Weight (average) - 28" = 7.5 Lbs.

Overall Length – 18", 38", 43", 45", 47", 49", 51"

FOR YOUR SAFETY AND THE SAFETY OF OTHERS, this owner's manual contains important warnings and safety procedures which must be understood **BEFORE** using this firearm. Read the **INSTRUCTIONS** and if you do not understand any part of them or the operation of your shotgun, stop and seek professional firearms instruction. You can get a copy of this manual from USSG, Inc. upon request.

Record the serial number of your firearm (located inside the receiver on the right hand side):

and a description of it:

Make a copy of this manual, proof of purchase/sales record for safekeeping in a secure safe or fireproof container. Such proof is necessary if the firearm is damaged, stolen or sent in for warranty repair.

 **W A R N I N G**
****YOU RISK PERSONAL INJURY OR DEATH
BY HANDLING THIS FIREARM****


Before handling any firearm, make sure you know the safety procedures and most importantly, keep the firearm pointed in a safe direction.

Before handling this firearm, read, understand and follow the instructions in this manual. Always keep this manual with the firearm. If you lend, give or sell this firearm, be sure the manual goes with it. If there is anything you do not understand, seek advice from someone qualified in safe handling of firearms. You must ALWAYS obey the following warnings, instructions and safety procedures:

1. Always keep the muzzle point in a safe direction.
2. Firearms should be unloaded and secured when not actually in use.
3. Don't rely on your firearm's safety.
4. Be sure of your target and what's beyond it.
5. Use only proper ammunition matching the precise gauge of your specific shotgun.
6. If your shotgun fails to fire when the trigger is pulled, handle with care.
7. Always wear ear and eye protection when shooting.
8. Be sure the barrel is clear of obstructions before shooting.
9. Don't alter or modify your firearm and have it serviced regularly.
10. Learn the mechanical and handling characteristics of your shotgun.
11. Shoot sober!

Type Of Ammunition To Be Used:

It is suggested that high quality commercially manufactured ammunition be used in this firearm. Avoid military surplus or old ammunition as it may not fire with sufficient force to expel the projectile or wad from the barrel. **The use of reloaded, high pressure or hand-loaded ammunition can be dangerous and will void the warranty.**

 **LEAD WARNING:** The actual firearm does not contain any lead; however, it does fire ammunition which contains lead or lead compounds known to the State of California to cause cancer, birth defects, reproductive toxicity, and other serious physical injury. Those who discharge a firearm, stand near someone who discharges a firearm or clean firearms are hereby warned of the dangers presented by lead and lead compounds and should take protective health measures. Avoid exposure to lead while handling and wash your hands after contact. Proper air ventilation is absolutely necessary when shooting indoors.

NOTICE

SHOTGUNS ARE CLASSIFIED AS FIREARMS OR DANGEROUS WEAPONS

and are sold by USSG INC. with the specific understanding that we are not responsible in any manner whatsoever for their safe handling or resale under local laws and regulations.

USSG INC. shall not be responsible in any manner whatsoever for malfunctioning of the firearm, for physical injury or for property damage resulting in whole or in part from (1) intentional or negligent discharge, (2) improper or careless handling, (3) unauthorized modifications and/or alteration of the internal/safety mechanisms, (4) defective, improper, high pressure, hand-loaded, or reloaded ammunition, (5) corrosion and/or lack of proper maintenance (6) neglect, or (7) other influences beyond our direct and immediate control. This limitation applies regardless of whether liability is asserted on the basis of contract, negligence or strict liability (including any failure to warn). Under no circumstance shall USSG INC. be liable for incidental or consequential damages, such as loss of use of property, commercial loss and loss of earnings or profits.

FOLLOWING THESE SAFETY RULES CAN SAVE YOUR LIFE OR THE LIFE OF SOMEONE ELSE

Get competent firearms instruction in safe handling before using this firearm. Please ask your dealer for names of a qualified instructor near you. All guns are extremely dangerous if carelessly handled or used. Remember that the firearm user is the primary “safety” and that reliance on any mechanical device should never replace safe handling procedures.

This firearm WILL FIRE if a cartridge is in the chamber and the trigger is pulled while the safety is disengaged.

DO NOT LOAD THIS SHOTGUN UNTIL YOU UNDERSTAND HOW IT OPERATES.

KEEP this shotgun unloaded at all times except when you are ready to fire and sure of your target.

ALWAYS carry this shotgun in a case or original box unloaded.

NEVER point this shotgun at anything that is not your intended target even if the shotgun is unloaded. When loading, unloading, cleaning or handling, always be sure the muzzle is pointed in a safe direction and always keep your finger off the trigger.

NEVER assume any gun is unloaded. Before handling, check to make sure the chamber is empty. See Unloading Instructions. Make sure you know that this or any firearm is unloaded before displaying or handling it. When handling any firearm, keep your fingers away from the trigger at all times until you intend to fire.

FOLLOWING THESE SAFETY RULES CAN SAVE YOUR LIFE OR THE LIFE OF SOMEONE ELSE

Get instructions from a competent firearms instructor before using this or any firearm. Learn from a professional how to handle, load, unload, operate, fire and care for your gun.

NEVER PLAY with your firearm. It is not a toy and can be a very dangerous weapon that can cause serious personal injury or death.

Always keep the gun pointed in a safe direction. Treat every gun as if it is loaded...all the time. **NEVER** point any firearm (loaded or unloaded) at any person or anything you do not intend to shoot. Always keep your gun unloaded until ready to use and make sure that it is unloaded before cleaning.

Keep your finger **OFF** the trigger until you are actually aiming at the target and ready to shoot. Learn to rest your finger outside of the trigger guard.

Never rely on a gun's "safety" to protect you from unsafe gun handling. A safety is only a mechanical device, not a substitute for using common sense and following gun safety procedures.

Never leave a gun unattended or where it could fall.

Store guns and ammunition separately **beyond the reach of children**. Make sure that they are properly secured so untrained individuals and children will be denied access to your guns and ammunition.

Test your gun's operation and safeties only at a shooting range while the firearm is pointed in a safe direction.

Know your target and what is beyond. Ask yourself what the projectile will hit if it misses the target or passes through the intended target. Remember, a fired projectile can travel over a mile (including a ricochet) and is capable of going through walls. Never shoot at hard flat surfaces or water. . .bullets ricochet.

Guns and alcohol or drugs do not mix. Don't take any alcoholic beverages and/ or drugs before or during shooting activities.

Never pull a gun toward you by the muzzle. Don't climb a tree, cross a ditch or fence with a loaded gun.

Always empty guns before entering a house, car, truck, boat, RV, camp or any building.

When receiving a gun, always open the action and check to make sure the chamber is unloaded.

NEVER accept anyone's word that a gun is "unloaded" or "empty." You should immediately open the action and check to make sure it is unloaded.

FOLLOWING THESE SAFETY RULES CAN SAVE YOUR LIFE OR THE LIFE OF SOMEONE ELSE

Be careful with **ALL** ammunition. Even “blank” cartridges are deadly at close range due to the muzzle blast. Make sure your ammunition is new and in good clean condition. Do **NOT** oil or grease ammunition as this may damage the cartridge primer. Do **NOT** tamper with or alter the standard factory ammunition.

Keep firearms unloaded when not actually in use. Load the gun only when on the range preparing to fire and unload it before leaving the range.

Never put your hand over the muzzle of a gun.

ALWAYS WEAR protective shooting glasses and hearing protection when using firearms.

Spectators should be at least 10 feet behind and away from the shooter while the shooter is loading, shooting and unloading. Spectators should wear protection for hearing and sight loss and they should avoid distracting those shooting their firearms.

Never drop your gun. If you do drop it, unload it and check it for proper function before using it again.

Do **NOT** alter or modify your gun. Don't try to change your gun's trigger pull, because it may affect sear engagement and thereby cause accidental firing.

Do **NOT** remove any internal safety or safety device on the firearm. Safety mechanisms are designed to help protect you from injury or death.

Properly maintain and keep your gun clean. Keep it in a dry place away from other metals and water. If your gun shows sign of corrosion or improper operation, have it serviced by a competent gunsmith.

Keep the muzzle pointed in a safe direction when loading and unloading your gun. Never point the muzzle at anyone. Never put your hand over the muzzle of a gun.

If a gun fails to fire when the trigger is pulled, keep it pointed down range at the target for 60 seconds. Sometimes slow primer ignition will cause a “hang fire” and the cartridge will go off after a short pause. If it still fails to fire, keep muzzle pointed in safe direction and avoid exposure to the breech, as you attempt to unload your firearm.

Never let water, snow, mud or other material enter the barrel. Always be sure the barrel is free of any obstruction.

Use the correct ammunition for your gun. Do **NOT** use the wrong size or wrong strength ammunition in your firearm.

FOLLOWING THESE SAFETY RULES CAN SAVE YOUR LIFE OR THE LIFE OF SOMEONE ELSE

Teach children: 1. **NOT** to touch guns, bullets, cartridges, shells, flares or any explosive device and 2. That if they discovery such a dangerous item or weapon, they must immediately report its location to their parents, school teacher or police.

Remember a firearm has the capability of taking your life or the life of someone else. Be careful with your firearm — an accident is almost always the result of not following basic safety rules.

USED FIREARMS - Firearms are sometimes altered to work incorrectly, or parts may be removed, lost or replaced with incorrect parts. If you got your USSG INC. firearm as a used gun, **BEFORE USING IT** you should take it to a good gunsmith who knows USSG INC. firearms, and have him examine it.

WRITE USSG INC. concerning any items or circumstances which you don't understand and which might relate to your safety and the operation of your firearm at: US SPORTING GOODS, INC. 1426 King Street, Cocoa, FL 32922

Phone: (321) 639-4842

WARNING (POTENTIAL OBSTRUCTIONS)

BEFORE LOADING or firing a shotgun, examine the bore and the firing chamber to be certain they are clean and free of any obstruction. Even a heavy coat of oil, grease, snow or water may result in damage to the firearm and injury to the shooter and/or persons near the firearm. A misfire or unusual sound upon firing is a signal to cease firing and to examine the chamber and bore. If there is any obstruction, clear the obstruction and clean the bore and chamber before firing.

Any bore obstruction, even if it is only partly blocked, may cause the gun to blow up if it is fired, or may cause damage to the gun such as a bulged barrel. To avoid injury or death to the shooter or bystanders, check the barrel before shooting or if a shot does not sound normal.

WARNING

Always keep the muzzle pointed in a safe direction! Never attempt to load or unload any firearm inside a vehicle, building or other confined space (except a properly constructed shooting range). Enclosed areas frequently offer no completely safe direction in which to point the firearm. If an accidental discharge occurs, there is great risk of death, personal injury or property damage. Before loading, always clean all, grease and oil from the bore and chamber, and check to be certain that no obstruction is in the barrel. Any foreign matter in the barrel could result in a bulged or burst barrel or other damage to the firearm and could cause serious injury to the shooter or to others.

⚠ WARNING

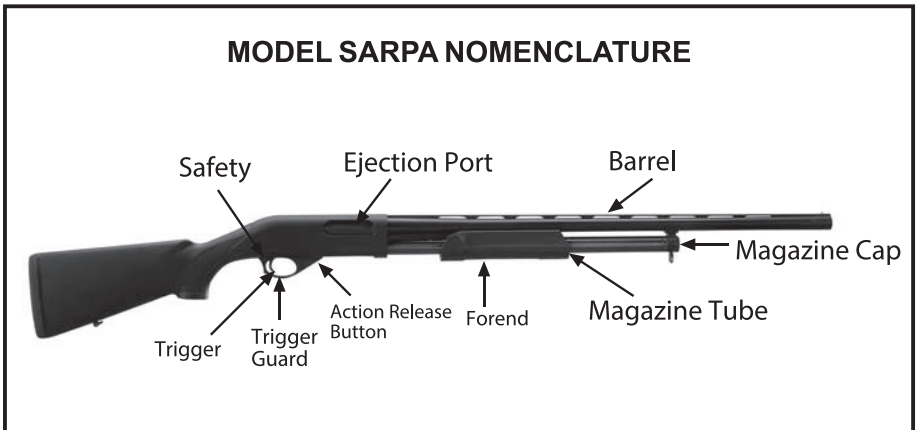
If there is any reason to suspect that a projectile is obstructing the barrel, immediately unload the firearm (See Unloading Instructions) and check the chamber and the bore. A wad, shot or some other matter may be lodged some distance down the barrel where it can not easily be seen. Check the bore by using a cleaning rod to pass through the barrel. If a blockage is in the bore, **DO NOT ATTEMPT TO SHOOT IT OUT WITH ANOTHER CARTRIDGE, OR BLOW IT OUT WITH A BLANK CARTRIDGE OR A CARTRIDGE FROM WHICH THE SHOT HAS BEEN REMOVED. SUCH TECHNIQUE(S) CAN GENERATE EXCESSIVE PRESSURE, DAMAGE THE FIREARM AND CAUSE SERIOUS PERSONAL INJURY.** If the blockage can be removed with a cleaning rod, clean any unburned powder grains from the bore, chambers and mechanism before resuming shooting. If the blockage can not be dislodged by tapping it with a cleaning rod, take the firearm to a gunsmith.

⚠ WARNING (EYE AND EAR PROTECTION)

When shooting, full eye and ear protection is mandatory at all times. Shooters and spectators must wear shooting glasses and hearing protection to prevent eye injury and hearing loss. Vision and hearing impairment can occur with only one moment of non-protection.

⚠ WARNING (Mechanical Malfunctions)

STOP SHOOTING IMMEDIATELY AND UNLOAD YOUR FIREARM if your firearm develops: a mechanical malfunction; binding or stoppage; spitting powder/gas; a cartridge primer is punctured; a cartridge case is bulged or ruptured; or the sound on firing does not sound quite right. Do **NOT** try one more shot but unload your firearm and take it and the ammunition to a qualified gunsmith or send the firearm back to USSG INC. for examination. Do not assume that the shotgun is empty merely because you checked the chamber. You must also check the bore for any fired shot or wad jammed inside the barrel.



Directions for Assembly

⚠ WARNING: Read and understand all instruction and warnings in this manual BEFORE using this shotgun.

1. Remove the stock/action from the box and remove the plastic covering. Remove the barrel from inside the box and remove its plastic covering and check to make sure the barrel is clear.
2. Remove the magazine tube cap.
3. Move the forend rearward slightly, so that the bolt is in the locked closed position. Insert the barrel extension into the receiver, making sure that the barrel extension is sliding between the bolt and top of the receiver and that the barrel collar is surrounding the magazine tube. Push the barrel back into the receiver until the barrel extension is flush with the front of the receiver.
4. Screw the magazine cap into place at the end of the magazine.

OPERATING INSTRUCTIONS

⚠ WARNING: Read and understand all instruction and warnings in this manual BEFORE using this shotgun. It is important to learn the parts of your shotgun and their functions before using this firearm.

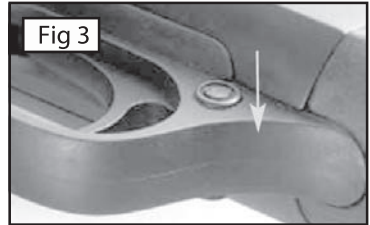
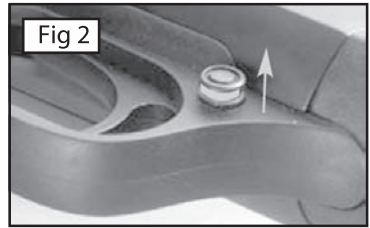
ACTION RELEASE TAB

Locate the action release tab on the left side of the receiver just forward of the trigger guard. Depressing this tab will unlock the action. You can now cycle the action by pulling the forend fully rearward and completely forward until the bolt/action is in its locked closed position. (**Fig. 1**)



SAFETY

The Safety Button is set through the trigger guard and can easily be activated or deactivated by pushing it until flush with one side or the other. When the safety is flush with the right side of the trigger guard, the safety is disengaged and there is a red ring visible on the base of the safety on the left side of the trigger guard (**Fig. 2**) When the safety is flush with the left side of the trigger guard, and the red ring is no longer visible, your safety has been engaged and you cannot fire your shotgun. (**Fig. 3**)



AMMUNITION

Use only quality ammunition specifically designed for your gauge of shotgun. Each barrel is marked with the size of shotshell it will accept. If the barrel is marked 3.5" that means your shotgun will accept 3.5" or 3" or 2-3/4" shotshells. If your barrel is marked 3" your shotgun will accept 3" or 2-3/4" shotshells. If your barrel is marked 2-3/4" do not attempt to load any size other than 2-3/4" shotshells. All USSG Inc. shotguns will accommodate steel shot. However, steel shot should not be used with any choke tighter than an improved cylinder choke (flush mount or external). Do not use steel shot with improved modified, full, modified or extra full choke tubes (flush mount or external).

⚠ WARNING: THE ACCIDENTAL LOADING AND DISCHARGE OF SHELLS OF THE WRONG GAUGE IN YOUR GUN CAN RESULT IN DAMAGE TO YOUR GUN AND INJURY TO THE SHOOTER OR OTHERS. To be safe, carry only the proper gauge ammunition with you when shooting.

LOADING

When loading, keep the safety on and the muzzle pointed in a safe direction. To load the magazine tube:

1. Turn the shotgun upside down. Make sure the action is locked closed.
2. Place a shotshell, of the proper gauge, onto the carrier (**Fig. 4**).
3. Slide the shell up and into the magazine tube. Two shells can fit into the magazine tube.
4. Cycle the action by first pulling the forend toward the action and then pushing the forend forward until the action locks closed. Your shotgun is now in battery. You can increase the shot capacity of your shotgun by adding an additional shotshell into the magazine following the procedures above.



FIRING

⚠ WARNING: Read and understand all instructions and warnings in this manual BEFORE using this shotgun. It is important to learn the parts of your shotgun and their functions before using this firearm.

Keep the muzzle pointed at your target. Be aware of what is behind or around your target as well as the target itself. After you have cycled the action and loaded a shell into your pump shotgun, the gun is ready to fire. Depress the safety so that it is flush with the right side of the trigger guard and has been disengaged. Pull the trigger and the shotgun will fire. Cycle the action to eject the spent shell and reload another shell.

UNLOADING

⚠ WARNING: Read and understand all instructions and warnings in this manual BEFORE using this shotgun. Always keep the shotgun pointed in a safe direction.

If you have your shotgun loaded and are ready to fire, but change your mind, first engage the safety by pushing the safety button flush with the left side of the trigger guard so that the red ring is no longer visible. Push the action release inward to unlock the action and slide the forend toward the action. The shell, which had been loaded, will eject. Be careful not to allow the shot shell to eject onto a hard surface, which may cause the shell to discharge.

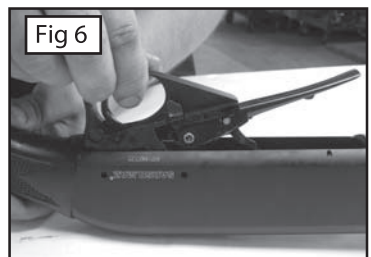
DISASSEMBLY

⚠ WARNING: Read and understand all instructions and warnings in this manual BEFORE using this shotgun. Always make sure the shotgun is completely unloaded before disassembly. Make sure your shotgun is UNLOADED before beginning disassembly.

At regular intervals or when the shotgun has been exposed to sand, water or other adverse conditions, disassemble, clean and oil it.

To disassemble your shotgun;

1. Remove the magazine cap.
2. Remove the barrel by pulling it out of the action.
3. Remove the forend and action bar assembly.
4. Remove the block from the action bar assembly.
5. Remove the trigger group by first removing the two retaining pins by using a punch to drive the pins out of the receiver. **(Fig. 5)**
6. Once the retaining pins have been removed, the entire trigger group can be removed by pulling down on the trigger guard. **(Fig. 6)**



You can remove the magazine tube plug for cleaning by:

1. Taking a screwdriver to the mag tube plug.
2. Push down.
3. Turn the mag plunger 1/8 turn clockwise and carefully release. **(Fig. 7)** CAUTION: The magazine tube is under spring pressure!

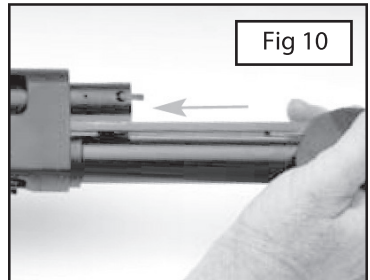
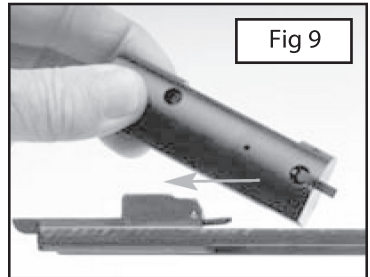
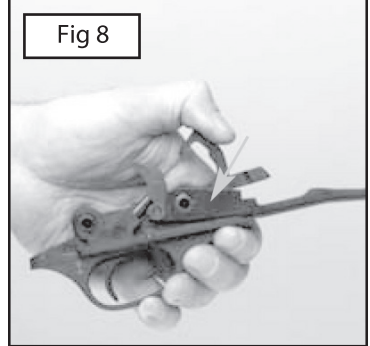
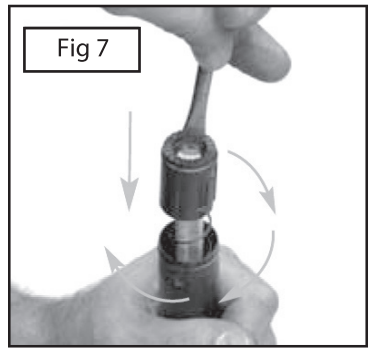
Further disassembly is not recommended and not necessary for regular maintenance.

REASSEMBLE

To reassemble the shotgun, first cock the hammer on the trigger assembly. To cock the hammer, pull down on the hammer until it locks into place.

1. Insert the trigger making sure the hammer is in the cocked position and tap the retaining pins back into position. **(Fig. 8)**
2. Hold the bolt carrier/action bar forend assembly and the bolt horizontally; hook the bolt assembly over the spring-loaded plunger protruding from the face of the bolt carrier. **(Fig. 9)**
3. Lower the bolt to rest on the carrier.
4. Make sure the bolt assembly is not resting on top of the plunger.
5. Slide the action bar assembly into the receiver to install. **(Fig. 10)**
6. Fully insert the barrel into the action until the barrel collar is flush with the action, and screw the magazine cap into place.

⚠ CAUTION: Always unload your gun and store it and ammunition separately in a locked receptacle out of children's reach and sight, minimizing the risk that the gun and ammunition could be easily available for loading and firing.



USE YOUR SHOTGUN CAREFULLY AND SAFELY.

! MANUFACTURER'S WARNING:

This firearm was manufactured to properly perform with the original parts as designed. It is your duty to make sure any parts you buy are correctly installed and that neither replacements nor originals are altered or changed. Your gun is a complex tool with many parts that must relate correctly to other parts for safe and accurate operation. Putting a gun together wrong or with modified parts can result in a damaged gun, or personal injury or death to you or others. Always let a qualified gunsmith work on your gun or at least, check any work not performed by a gunsmith. Firearms safety is your primary concern. **THE GUN OWNER MUST ACCEPT FULL RESPONSIBILITY FOR THE CORRECT REASSEMBLY AND FUNCTIONING OF THE FIREARM AFTER ANY DISASSEMBLY OR REPLACEMENT OF PARTS.**

TO CLEAN AND MAINTAIN YOUR SHOTGUN:

- A) Follow procedures for unloading shotgun as described previously.
- B) Follow procedures for disassembly of shotgun as described previously.
- C) Materials needed to clean this shotgun are: a cleaning rod, cotton bore patches, brass bore brush, powder solvent, a small soft brush and good quality gun oil.

! WARNING: Lead or lead compounds are known to the State of California to cause cancer, birth defects, reproductive toxicity, and other serious physical injury. Those who clean firearms should take protective measures to avoid contact or exposure to such chemicals.

- D) Using the bore brush with powder solvent, scrub the interior of the barrel and chamber to remove any powder and lead residue in the bore. Always and lastly, swab the interior of the barrel with cotton patch with gun oil to coat and protect the bore and chambers from rust and corrosion.
- E) Any powder fowling on the firing wall, barrel, etc. can be easily cleaned with a brush and powder solvent.
- F) All external surfaces should be wiped down with a light coat of rust preventative. Avoid using too much oil as powder, dust or other foreign material may get trapped in the oil. This could lead to congealed deposits which may interfere with the safe and reliable operation of the shotgun.
- G) **USE CAUTION** while using solvents in gun bore cleaning. Prolonged or excess contact with solvents can damage the gun's bluing and finish. Be sure to wipe away all excess solvent and then lubricate with oil.
- H) A gun should be cleaned after firing. In addition, external parts should be wiped with an oiled cloth after handling. A light oil is ordinarily all that is necessary in cleaning if the gun has not been fired or fired very little. If a gun is used frequently, it must be cleaned after each firing and regularly serviced by a professional gunsmith. If the gun has been stored, remove all excess oil and/or grease before firing. Always check to be sure that no cleaning patch or other obstruction remains in the bore or chambers before firing.

DANGER — AMMUNITION WARNING

Firearms may be damaged and serious personal injury or death to the shooter or bystanders may result from any condition which contributes to the generation of excessive pressure or uncontrolled release of gas within the firearm. Such adverse conditions can be caused by bore or chamber obstructions, propellant powder overloads or by defective, incorrect or improperly loaded and assembled cartridge components. Even the strongest firearm can be blown up as a result of excessive pressure. It is extremely dangerous to use a cartridge whose pressure is greater than that developed by cartridges loaded to industry standards.

AMMUNITION (CARTRIDGES) NOTICE

We specifically disclaim responsibility for any damage, injury or death occurring in connection with or as the result of the use of USSG INC. shotguns with faulty, non-standard, remanufactured, hand loaded or reloaded ammunition or with cartridges other than factory cartridges for which the firearm was originally chambered.

LUBRICATION WARNING

Firing a shotgun with oil, grease or any other material even partially obstructing the bore may result in damage to the shotgun and personal injury to the shooter and those nearby. Do not spray or apply lubricants directly on ammunition. If the powder charge of a cartridge is affected by the lubricant, they may not fully ignite yet the energy from the primer and/or powder may still be sufficient to push the projectile or wad into the bore where it may become lodged. Firing a subsequent cartridge into the obstructed bore will damage the shotgun and may cause personal injury to the shooter and those nearby. Use lubricants properly. You are responsible for the proper care and maintenance of your firearm and ammunition.

ONE YEAR LIMITED WARRANTY

This USSG INC. firearm is warranted to the original retail customer for One Year from date of purchase against defects in material and workmanship. All parts and labor or replacement **at our option** are covered. Stock and Fore End are not covered by the One Year Warranty. The warranty on the stock and fore end is 60 days from purchase and only covers manufactured and material defects.

Transportation to and from our repair facilities, government fees, damage caused by failure to perform normal maintenance, sales outside the United States, damage due to use of high velocity, high pressure, reloaded or other nonstandard ammunition, or any unauthorized repair, modification, misuse, abuse, or alteration of the product is not covered by this Limited Warranty.

Any implied warranties, including the implied warranties of merchantability and fitness for a particular purpose, are limited to one year from date of original retail purchase. Consequential or incidental damages and/or expenses, or any other expenses are not covered by this warranty.

To obtain warranty performance send your firearm with proof of retail purchase, freight prepaid to:

US SPORTING GOODS, INC.
1426 King Street
Cocoa, FL 32922

NOTICE: It is illegal to ship a firearm with ammunition in the firearm or in the same packaging. Firearms and ammunition must be shipped separately. For information about shipping ammunition, call USSG INC. at (321) 639-4842.

 **WARNING—ALTERATIONS OR MODIFICATIONS**

Altering or modifying parts and/or internal safeties is dangerous and will void the warranty. This shotgun was manufactured to perform properly with the original parts as designed. It is your duty to make sure any parts you buy are made for this firearm and are installed correctly and that neither the replacements nor originals are altered or changed. Your gun is a complex precision tool with many parts that must relate correctly to other parts in order for proper and safe operation. Putting a gun together wrong or with incorrect or modified parts can result in a damaged gun, danger, and personal injury or death to you and others through malfunction. Always have a qualified gunsmith work on your gun or at least check any work not performed by a gunsmith.

YOUR OWNER'S MANUAL

Always keep this manual with your firearm. Make sure you understand all the warnings, operation instructions and safety procedures. When you lend, give or sell the firearm, be sure this manual goes with it. You can get a copy of this manual from USSG INC. upon request.

ALL PARTS ORDERS ARE SUBJECT TO A \$10.00 CHARGE FOR SHIPPING AND HANDLING. Please state Model, Caliber, Serial Number, and Finish Color when ordering. For parts, information and service contact:

US SPORTING GOODS, INC. 1426 King Street, Cocoa, FL 32922
Phone: (321) 639-4842

CHOKE TUBES

⚠️ WARNING. Never install or remove choke tubes while the firearm is loaded. Only install or remove choke tubes with the firearm unloaded, the action open and the trigger block safety engaged.

⚠️ WARNING! MAKE SURE YOU FULLY TIGHTEN THE CHOKE TUBE
Shooting with a loose choke tube can cause damage to your shotgun.

Additional information on screw choke tubes:

- A) Only tighten or loosen choke tubes with flat key wrench supplied with shotgun. Note: wrench (and extra choke tube or tubes if supplied) are under the cardboard in front of the shotgun receiver in the box.
- B) Never shoot the shotgun with a partially installed choke tube.

- C) Your pump action shotgun comes with one interchangeable multi-choke tube. The lines on the top of the tube can identify the choke tube constriction (**Fig. 11**).

The constrictions are as follows:

NAME CONSTRICTION NOTCHES

Cylinder .000" I IIIII

Skeet .005" IIIII

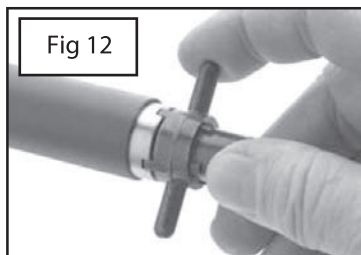
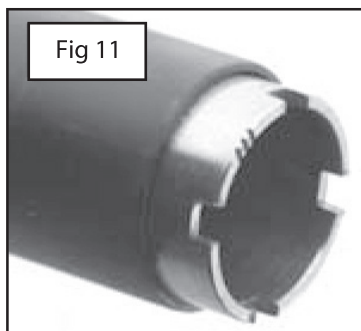
Improved Cylinder .010" IIIII

Modified .020" III

Improved Modified .025" II

Full .035" I

Other multi-choke tubes are available from your USSG Inc. dealer or USSG Inc. To change the choke tubes, simply use the special spanning tool provided. Insert the spanning tool into the recessed space of the tube and unscrew. Insert the desired choke tube and seat with the spanning tool in the reverse direction. (**Fig. 12**)



- D) **USSG Inc. recommends the following choke tube selections:** For steel shot, improved cylinder or cylinder. For buckshot, improved cylinder or cylinder chokes. For slugs, use an improved cylinder or cylinder.

⚠️ WARNING: If your shotgun is equipped for multi-choke tubes, never fire your shotgun without a choke tube installed! This could damage the choke tube threads on the inside of the barrels.

- E) Before using the shotgun make sure that the choke tubes are installed correctly.
- F) Keep choke tubes lubricated and installed. Never fire the gun without a choke tube installed. Handle choke tubes carefully since the leading edge is very thin.

Notes on Shot Material and Chokes:

- 1) Lead, Bismuth and Tungsten Matrix - OK to use lead choke tubes or fixed choke guns
- 2) Steel, Tungsten–Iron, Hevi Shot - you must use steel shot tubes or lead (IC or Cylinder tubes or fixed IC or Cylinder chokes)
- 3) Always treat all fixed choke guns as if they were made for lead shot (no - Steel, Tungsten–Iron, Hevi Shot unless otherwise noted or the choke is IC or Cylinder)

If you would like to buy extra choke tubes (skeet, trap, extra full, etc.)
call 1-321-639- 4842

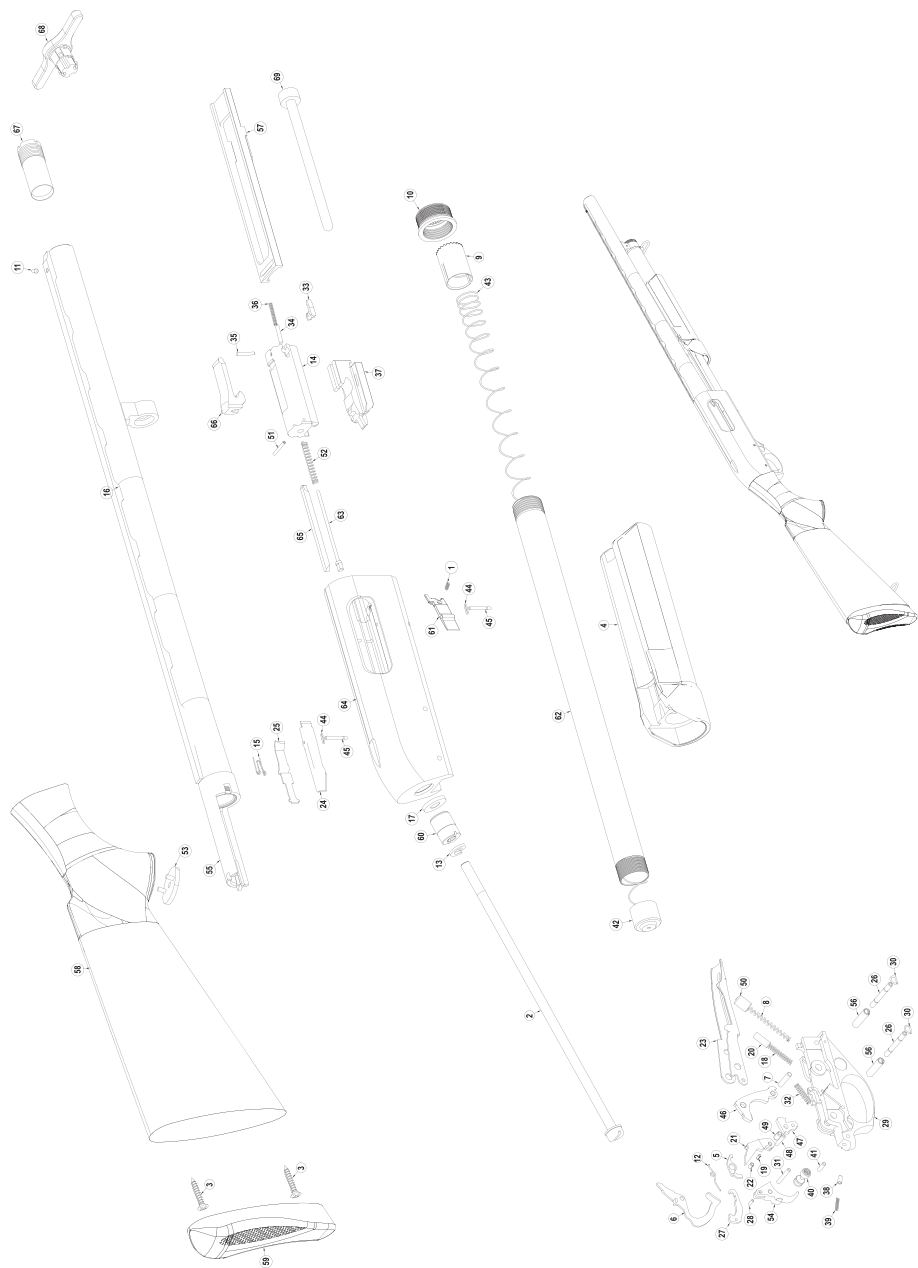
SAR PA 12GA 3 28"1MC BL" EXPLODED VIEW



SAR PA 12GA 3 28"1MC BL" PART LIST

NO	PART NAME	NO	PART NAME
1	RECEIVER LATCH RETAINING SPRING	35	EXTRACTOR PIN BLUED
2	STOCK CONNECTING BOLT	36	EXTRACTOR SPRING
3	BUTT PLATE SCREW	37	BOLT SLIDE PUMP 12 GA BLUED
4	FOREND 12GA PUMP	38	BOLT SLIDE PUMP 12 GA BLUED
5	SAFETY ARM	39	HAND SAFETY SPRING
6	SAFETY LEVER	40	HAND SAFETY BLUED
7	HAMMER PIN BLUED	41	HAND SAFETY SPRING RETAINING PIN BLUED
8	HAMMER SPRING PUMP	42	MAGAZINE FOLLOWER BLUED
9	MAGAZINE SPRING RETAINING RING 12GA	43	MAGAZINE SPRING 12 GA
10	CYLINDER RUBBER GUIDE FOREND CAP (REMINGTON) BLUED	44	LATCH PIN RETAINING SPRING
11	FRONT SIGHT M3	45	LATCH PIN BLUED
12	AUTOMATIC SAFETY SPRING	46	HAMMER PUMP
13	BUFFER	47	HAMMER BLOCK
14	BOLT BLUED 12 GA	48	HAMMER BLOCK PIN BLUED
15	BEARING HOLDER SPRING PUMP	49	HAMMER BLOCK ELASTIC PIN
16	BARREL 71 CM 3" BLUED INTERNAL SHOCK	50	HAMMER SPRING FOLLOWER BLUED
17	STOCK INTERNAL BUFFER	51	FIRING PIN ELASTIC STOP
18	CARRIER MAIN SPRING	52	FIRING PIN SPRING
19	BREECH BLOCK LATCH INTERNAL PIN	53	PLASTIC STOCK LOWER LID
20	BREECH BLOCK LATCH SPRING FOLLOWER BLUED	54	TRIGGER BLUED
21	BREECH BLOCK LATCH BLUED	55	BARREL EXTENSION ASSY 12GA BLUED
22	BREECH BLOCK LATCH PIN	56	TRIGGER GUARD PIN BUSHING WHITE CHROME
23	CARRIER 12 GA PUMP BLUED	57	COCKING ROD 12 GA BLUED
24	BEARING HOLDER PUMP BLUED	58	STOCK SYNTHETIC 12GA
25	AUXILIARY MAGAZINE LATCH SPRING BLUED	59	BUTT PLATE NEW TYPE SYNTHETIC camouflaged
26	TRIGGER PLATE PIN 12 GA BLUED	60	STOCK STUD PART SEARCH
27	TRIGGER ARM	61	RECEIVER LATCH RETAINING BLUED
28	TRIGGER ARM PIN	62	MAGAZINE TUBE SAR-PA BLUED
29	TRIGGER PLATE PUMP	63	FIRING PIN BLUED
30	TRIGGER GUARD PIN BUSHING SPRING	64	RECEIVER SAR PA 12GA LASER MARKING
31	TRIGGER PIN BLUED	65	LOCKING BLOCK SHOE BLUED
32	TRIGGER SPRING	66	LOCKING BLOCK 12GA BLUED
33	EXTRACTOR BLUED	67	INTERNAL CHOKE 5"- LASER MARKING
34	EXTRACTOR PLUNGER BLUED		

SAR P/A 12GA 3 28"1MC CAMO" EXPLODED VIEW



SAR P/A 12GA 3 28"1MC CAMO" PART LIST

NO	PART NAME	PART NAME
1	RECEIVER LATCH RETAINING SPRING	EXTRACTOR SPRING
2	STOCK CONNECTING BOLT	BOLT SLIDE PUMP 12 GA BLUED
3	BUTT PLATE SCREW	BOLT SLIDE PUMP 12 GA BLUED
4	FOREND 12GA PUMP camouflaged	HAND SAFETY SPRING
5	SAFETY ARM	HAND SAFETY BLUED
6	SAFETY LEVER	HAND SAFETY SPRING RETAINING PIN BLUED
7	HAMMER PIN BLUED	MAGAZINE FOLLOWER BLUED
8	HAMMER SPRING PUMP	MAGAZINE SPRING 12 GA
9	MAGAZINE SPRING RETAINING RING 12GA	LATCH PIN RETAINING SPRING
10	CYLINDER RUBBER GUIDE FOREND CAP(REMINISTON) CAMO	LATCH PIN BLUED
11	FRONT SIGHT M3	HAMMER PUMP
12	AUTOMATIC SAFETY SPRING	HAMMER BLOCK
13	BUFFER	HAMMER BLOCK PIN BLUED
14	BOLT BLUED 12GA	HAMMER BLOCK ELASTIC PIN
15	BEARING HOLDER SPRING PUMP	HAMMER SPRING FOLLOWER BLUED
16	BARREL 71 CM 3"internal shock camouflaged	FIRING PIN ELASTIC STOP
17	STOCK INTERNAL BUFFER	FIRING PIN SPRING
18	CARRIER MAIN SPRING	PLASTIC STOCK LOWER LID
19	BREECH BLOCK LATCH INTERNAL PIN	TRIGGER BLUED
20	BREECH BLOCK LATCH SPRING FOLLOWER BLUED	BARREL EXTENSION ASSY 12GA BLUED
21	BREECH BLOCK LATCH BLUED	TRIGGER GUARD PIN BUSHING WHITE CHROME
22	BREECH BLOCK LATCH PIN	COCKING ROD 12 GA BLUED
23	CARRIER 12 GA PUMP	STOCK SYNTHETIC 12GA
24	BEARING HOLDER PUMP BLUED	BUTT PLATE NEW TYPE SYNTHETIC camouflaged
25	AUXILIARY MAGAZINE LATCH SPRING BLUED	STOCK STUD PART SEARCH
26	TRIGGER PLATE PIN 12 GA BLUED	RECEIVER LATCH RETAINING BLUED
27	TRIGGER ARM	MAGAZINE TUBE SAR-PA BLUED
28	TRIGGER ARM PIN	FIRING PIN BLUED
29	TRIGGER PLATE PUMP	RECEIVER SAR PA 12GA LASER MARKING CAMO
30	TRIGGER GUARD PIN BUSHING SPRING	LOCKING BLOCK SHOE BLUED
31	TRIGGER PIN BLUED	LOCKING BLOCK 12GA BLUED
32	TRIGGER SPRING	INTERNAL CHOKE 5"- LASER MARKING
33	EXTRACTOR BLUED	CHOKE TUBE KEY (PLASTIC INJECTION)
34	EXTRACTOR PLUNGER BLUED	PLUG 12 GA
35	EXTRACTOR PIN BLUED	

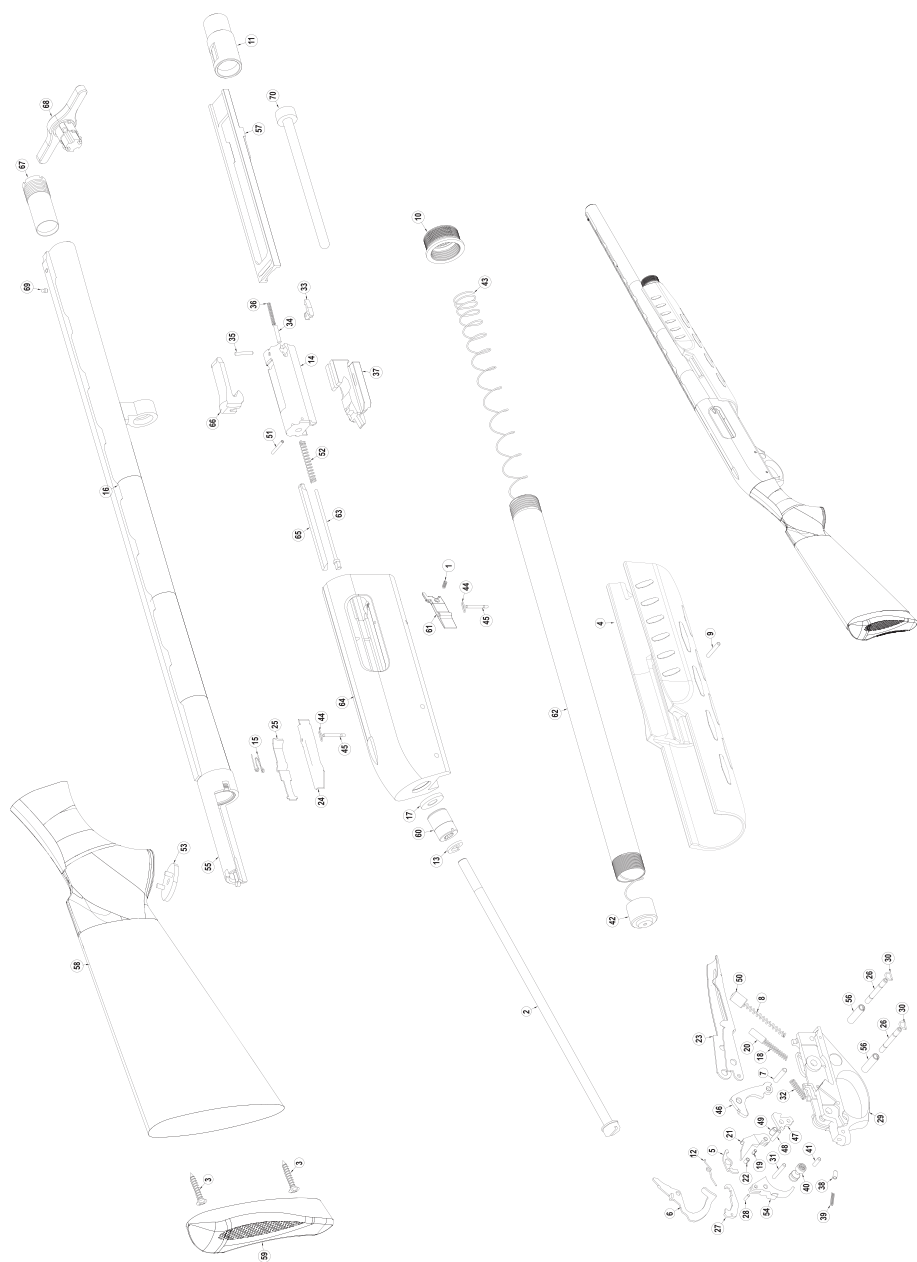
SAR P/A 12GA 3.5 26"1MC BL" EXPLODED VIEW



SAR P/A 12GA 3.5 26"1MC BL" PART LIST

NO	PART NAME	NO	PART NAME
1	RECEIVER LATCH RETAINING SPRING	36	EXTRACTOR SPRING
2	STOCK CONNECTING BOLT	37	BOLT SLIDE PUMP M204 SM BLUED
3	BUTT PLATE SCREW	38	BOLT SLIDE PUMP 12 GA BLUED
4	FOREND 3 1/2" PUMP	39	HAND SAFETY SPRING
5	SAFETY ARM	40	HAND SAFETY BLUED
6	SAFETY LEVER	41	HAND SAFETY SPRING RETAINING PIN BLUED
7	HAMMER PIN BLUED	42	MAGAZINE FOLLOWER BLUED M204 SM
8	HAMMER SPRING PUMP	43	MAGAZINE SPRING 12 GA
9	FOREND CONNECTION PIN BLUED	44	LATCH PIN RETAINING SPRING
10	CYLINDER RUBBER GUIDE FOREND CAP (REMINGTON) BLUED	45	LATCH PIN BLUED
11	COCKING ROD SUPPORT 3 1/2"PUMP	46	HAMMER PUMP
12	AUTOMATIC SAFETY SPRING	47	HAMMER BLOCK
13	BUFFER	48	HAMMER BLOCK PIN BLUED
14	BOLT BLUED M204 SM	49	HAMMER BLOCK ELASTIC PIN
15	BEARING HOLDER SPRING PUMP	50	HAMMER SPRING FOLLOWER BLUED
16	BARREL 71 3 1/2" blued internal shock	51	FIRING PIN ELASTIC STOP
17	STOCK INTERNAL BUFFER	52	FIRING PIN SPRING
18	CARRIER MAIN SPRING	53	PLASTIC STOCK LOWER LID
19	BREECH BLOCK LATCH INTERNAL PIN	54	TRIGGER BLUED
20	BREECH BLOCK LATCH SPRING FOLLOWER BLUED	55	BARREL EXTENSION ASSY 3/2" BLUED
21	BREECH BLOCK LATCH BLUED	56	TRIGGER GUARD PIN BUSHING WHITE CHROME
22	BREECH BLOCK LATCH PIN	57	COCKING ROD BLUED M204 SM
23	CARRIER 3 1/2" PUMP BLUED	58	STOCK SYNTHETIC NEW TYPE 12GA
24	BEARING HOLDER PUMP BLUED 3.5"	59	BUTT PLATE NEW TYPE SYNTHETIC camouflaged
25	AUXILIARY MAGAZINE LATCH SPRING BLUED 3 1/2"	60	STOCK STUD PART SEARCH
26	TRIGGER PLATE PIN 12 GA BLUED	61	RECEIVER LATCH RETAINING BLUED
27	TRIGGER ARM	62	MAGAZINE TUBE SAR-PA BLUED
28	TRIGGER ARM PIN	63	FIRING PIN BLUED LEOPARD
29	TRIGGER PLATE PUMP	64	RECEIVER SAR PA 12GA 3 1/2" LASER MARKING
30	TRIGGER GUARD PIN BUSHING SPRING	65	LOCKING BLOCK SHOE BLUED
31	TRIGGER PIN BLUED	66	LOCKING BLOCK 12GA BLUED
32	TRIGGER SPRING	67	INTERNAL CHOKE 5*- LASER MARKING
33	EXTRACTOR BLUED	68	CHOKE TUBE KEY (PLASTIC INJECTION)
34	EXTRACTOR PLUNGER BLUED	69	FRONT SIGHT M3
35	EXTRACTOR PIN BLUED	70	PLUG 12 GA

SAR P/A 12GA 3.5 28"18.5"1MCBL" EXPLODED VIEW



SAR P/A 12GA 3.5 28"18.5"1MCBL" PART LIST

NO	PART NAME	NO	PART NAME
1	RECEIVER LATCH RETAINING SPRING	36	EXTRACTOR SPRING
2	STOCK CONNECTING BOLT	37	BOLT SLIDE PUMP M204 SM BLUED
3	BUTT PLATE SCREW	38	BOLT SLIDE PUMP 12 GA BLUED
4	FOREND 3 1/2" PUMP	39	HAND SAFETY SPRING
5	SAFETY ARM	40	HAND SAFETY BLUED
6	SAFETY LEVER	41	HAND SAFETY SPRING RETAINING PIN BLUED
7	HAMMER PIN BLUED	42	MAGAZINE FOLLOWER BLUED M204 SM
8	HAMMER SPRING PUMP	43	MAGAZINE SPRING 12 GA
9	FOREND CONNECTION PIN BLUED	44	LATCH PIN RETAINING SPRING
10	CYLINDER RUBBER GUIDE FOREND CAP (REMINGTON) BLUED	45	LATCH PIN BLUED
11	COCKING ROD SUPPORT 3 1/2" PUMP	46	HAMMER PUMP
12	AUTOMATIC SAFETY SPRING	47	HAMMER BLOCK
13	BUFFER	48	HAMMER BLOCK PIN BLUED
14	BOLT BLUED M204 SM	49	HAMMER BLOCK ELASTIC PIN
15	BEARING HOLDER SPRING PUMP	50	HAMMER SPRING FOLLOWER BLUED
16	BARREL 71CM 3 1/2" blued internal shock	51	FIRING PIN ELASTIC STOP
17	STOCK INTERNAL BUFFER	52	FIRING PIN SPRING
18	CARRIER MAIN SPRING	53	PLASTIC STOCK LOWER LID
19	BREECH BLOCK LATCH INTERNAL PIN	54	TRIGGER BLUED
20	BREECH BLOCK LATCH SPRING FOLLOWER BLUED	55	BARREL EXTENSION ASSY 3 1/2" BLUED
21	BREECH BLOCK LATCH BLUED	56	TRIGGER GUARD PIN BUSHING WHITE CHROME
22	BREECH BLOCK LATCH PIN	57	COCKING ROD BLUED M204 SM
23	CARRIER 3 1/2" PUMP BLUED	58	STOCK SYNTHETIC NEW TYPE 12GA
24	BEARING HOLDER PUMP BLUED 3.5"	59	BUTT PLATE NEW TYPE SYNTHETIC camouflaged
25	AUXILIARY MAGAZINE LATCH SPRING BLUED 3 1/2"	60	STOCK STUD PART SEARCH
26	TRIGGER PLATE PIN 12 GA BLUED	61	RECEIVER LATCH RETAINING BLUED
27	TRIGGER ARM	62	MAGAZINE TUBE SAR-PA BLUED
28	TRIGGER ARM PIN	63	FIRING PIN BLUED LEOPARD
29	TRIGGER PLATE PUMP	64	RECEIVER SAR PA 12GA 3 1/2" LASER MARKING
30	TRIGGER GUARD PIN BUSHING SPRING	65	LOCKING BLOCK SHOE BLUED
31	TRIGGER PIN BLUED	66	LOCKING BLOCK 12GA BLUED
32	TRIGGER SPRING	67	INTERNAL CHOKE 5- LASER MARKING
33	EXTRACTOR BLUED	68	CHOKE TUBE KEY (PLASTIC INJECTION)
34	EXTRACTOR PLUNGER BLUED	69	FRONT SIGHT M3
35	EXTRACTOR PIN BLUED	70	PLUG 12 GA

SAR P/A 12GA 3.5 28"1MC BL" EXPLODED VIEW



SAR P/A 12GA 3.5 28"1MC BL " PART LIST

NO	PART NAME	NO	PART NAME
1	RECEIVER LATCH RETAINING SPRING	36	EXTRACTOR SPRING
2	STOCK CONNECTING BOLT	37	BOLT SLIDE PUMP M204 SM BLUED
3	BUTT PLATE SCREW	38	BOLT SLIDE PUMP 12 GA BLUED
4	FOREND 3 1/2" PUMP	39	HAND SAFETY SPRING
5	SAFETY ARM	40	HAND SAFETY BLUED
6	SAFETY LEVER	41	HAND SAFETY SPRING RETAINING PIN BLUED
7	HAMMER PIN BLUED	42	MAGAZINE FOLLOWER BLUED M204 SM
8	HAMMER SPRING PUMP	43	MAGAZINE SPRING 12 GA
9	FOREND CONNECTION PIN BLUED	44	LATCH PIN RETAINING SPRING
10	CYLINDER RUBBER GUIDE FOREND CAP ^(REMINGTON) BLUED	45	LATCH PIN BLUED
11	COCKING ROD SUPPORT 3 1/2" PUMP	46	HAMMER PUMP
12	AUTOMATIC SAFETY SPRING	47	HAMMER BLOCK
13	BUFFER	48	HAMMER BLOCK PIN BLUED
14	BOLT BLUED M204 SM	49	HAMMER BLOCK ELASTIC PIN
15	BEARING HOLDER SPRING PUMP	50	HAMMER SPRING FOLLOWER BLUED
16	BARREL .66CM 3 1/2" blued internal shock	51	FIRING PIN ELASTIC STOP
17	STOCK INTERNAL BUFFER	52	FIRING PIN SPRING
18	CARRIER MAIN SPRING	53	PLASTIC STOCK LOWER LID
19	BREECH BLOCK LATCH INTERNAL PIN	54	TRIGGER BLUED
20	BREECH BLOCK LATCH SPRING FOLLOWER BLUED	55	BARREL EXTENSION ASSY 3/2" BLUED
21	BREECH BLOCK LATCH BLUED	56	TRIGGER GUARD PIN BUSHING WHITE CHROME
22	BREECH BLOCK LATCH PIN	57	COCKING ROD BLUED M204 SM
23	CARRIER 3 1/2" PUMP BLUED	58	STOCK SYNTHETIC NEW TYPE 12GA
24	BEARING HOLDER PUMP BLUED 3.5"	59	BUTT PLATE NEW TYPE SYNTHETIC camouflaged
25	AUXILIARY MAGAZINE LATCH SPRING BLUED 3 1/2"	60	STOCK STUD PART SEARCH
26	TRIGGER PLATE PIN 12 GA BLUED	61	RECEIVER LATCH RETAINING BLUED
27	TRIGGER ARM	62	MAGAZINE TUBE SAR-PA BLUED
28	TRIGGER ARM PIN	63	FIRING PIN BLUED LEOPARD
29	TRIGGER PLATE PUMP	64	RECEIVER SAR PA 12GA 3 1/2" LASER MARKING
30	TRIGGER GUARD PIN BUSHING SPRING	65	LOCKING BLOCK SHOE BLUED
31	TRIGGER PIN BLUED	66	LOCKING BLOCK 12GA BLUED
32	TRIGGER SPRING	67	INTERNAL CHOKE 5"- LASER MARKING
33	EXTRACTOR BLUED	68	CHOKE TUBE KEY (PLASTIC INJECTION)
34	EXTRACTOR PLUNGER BLUED	69	FRONT SIGHT M3
35	EXTRACTOR PIN BLUED	70	PLUG 12 GA

SAR P/A 12GA 3.5 28"1MC CAMO" EXPLODED VIEW



SAR P/A 12GA 3.5 28"1MC CAMO" PART LIST

NO	PART NAME	NO	PART NAME
1	RECEIVER LATCH RETAINING SPRING	36	EXTRACTOR SPRING
2	STOCK CONNECTING BOLT	37	BOLT SLIDE PUMP M204 SM BLUED
3	BUTT PLATE SCREW	38	BOLT SLIDE PUMP 12 GA BLUED
4	FOREND 3 1/2" PUMP camouflaged	39	HAND SAFETY SPRING
5	SAFETY ARM	40	HAND SAFETY BLUED
6	SAFETY LEVER	41	HAND SAFETY SPRING RETAINING PIN BLUED
7	HAMMER PIN BLUED	42	MAGAZINE FOLLOWER BLUED M204 SM
8	HAMMER SPRING PUMP	43	MAGAZINE SPRING 12 GA
9	FOREND CONNECTION PIN BLUED	44	LATCH PIN RETAINING SPRING
10	CYLINDER RUBBER GUIDE FOREND CAP (REINFORCED) CAMO	45	LATCH PIN BLUED
11	COCKING ROD SUPPORT 3 1/2" PUMP	46	HAMMER PUMP
12	AUTOMATIC SAFETY SPRING	47	HAMMER BLOCK
13	BUFFER	48	HAMMER BLOCK PIN BLUED
14	BOLT BLUED M204 SM	49	HAMMER BLOCK ELASTIC PIN
15	BEARING HOLDER SPRING PUMP	50	HAMMER SPRING FOLLOWER BLUED
16	BARREL 71 3 1/2" camouflaged internal shock	51	FIRING PIN SPRING
17	STOCK INTERNAL BUFFER	52	FIRING PIN ELASTIC STOP
18	CARRIER MAIN SPRING	53	PLASTIC STOCK LOWER LID
19	BREECH BLOCK LATCH INTERNAL PIN	54	TRIGGER BLUED
20	BREECH BLOCK LATCH SPRING FOLLOWER BLUED	55	BARREL EXTENSION ASSY 3 1/2" BLUED
21	BREECH BLOCK LATCH BLUED	56	TRIGGER GUARD PIN BUSHING WHITE CHROME
22	BREECH BLOCK LATCH PIN	57	COCKING ROD BLUED M204 SM
23	CARRIER 3 1/2" PUMP BLUED	58	STOCK SYNTHETIC 12GA camouflaged
24	BEARING HOLDER PUMP BLUED 3.5"	59	BUTT PLATE NEW TYPE SYNTHETIC camouflaged
25	AUXILIARY MAGAZINE LATCH SPRING BLUED 3 1/2"	60	STOCK STUD PART SEARCH
26	TRIGGER PLATE PIN 12 GA BLUED	61	RECEIVER LATCH RETAINING BLUED
27	TRIGGER ARM	62	MAGAZINE TUBE SAR-PA BLUED
28	TRIGGER ARM PIN	63	FIRING PIN BLUED LEOPARD
29	TRIGGER PLATE PUMP	64	RECEIVER SAR PA 12GA 3 1/2" LASER MARKING
30	TRIGGER GUARD PIN BUSHING SPRING	65	LOCKING BLOCK SHOE BLUED
31	TRIGGER PIN BLUED	66	LOCKING BLOCK 12GA BLUED
32	TRIGGER SPRING	67	INTERNAL CHOKE 5"- LASER MARKING
33	EXTRACTOR BLUED	68	CHOKE TUBE KEY (PLASTIC INJECTION)
34	EXTRACTOR PLUNGER BLUED	69	PLUG 12 GA
35	EXTRACTOR PIN BLUED	70	FRONT SIGHT M3

SAR P/A 20GA 3 20"1MC BL" EXPLODED VIEW



SAR P/A 20GA 3 20"1MC BL " PART LIST

NO	PART NAME	NO	PART NAME
1	RECEIVER LATCH RETAINING SPRING	35	FRONT SIGHT M3
2	STOCK STUD 20GA	36	HAND SAFETY SPRING FOLLOWER BLUED
3	BUTT PLATE SCREW G2002	37	HAND SAFETY SPRING
4	FOREND 20GA PUMP	38	HAND SAFETY BLUED
5	SAFETY ARM	39	HAND SAFETY SPRING RETAINING PIN BLUED
6	SAFETY LEVER	40	MAGAZINE FOLLOWER BLUED
7	HAMMER PIN BLUED	41	MAGAZINE SPRING 20 GA
8	HAMMER SPRING PUMP	42	LATCH PIN RETAINING SPRING
9	INTERNAL CHOKE 5" 20GA - LASER MARKING	43	LATCH PIN BLUED
10	CYLINDER RUBBER GUIDE FOREND CAP 20GA	44	HAMMER PUMP
11	AUTOMATIC SAFETY SPRING	45	HAMMER BLOCK
12	CHOKE TUBE KEY BLACK PLATED	46	HAMMER BLOCK PIN BLUED
13	BEARING HOLDER SPRING PUMP	47	HAMMER BLOCK ELASTIC PIN
14	BARREL 20GA 5TCM I.C. 3" BLUED	48	HAMMER SPRING FOLLOWER BLUED
15	STOCK STUD BUSH BLUED 20GA	49	FIRING PIN ELASTIC STOP
16	CARRIER MAIN SPRING	50	FIRING PIN SPRING
17	BREECH BLOCK LATCH INTERNAL PIN	51	BOLT PUMP 20 GA BLUED
18	BREECH BLOCK LATCH SPRING FOLLOWER BLUED	52	TRIGGER BLUED
19	BREECH BLOCK LATCH BLUED	53	BARREL EXTENSION ASSY 20GA BLUED
20	BREECH BLOCK LATCH PIN	54	TRIGGER GUARD PIN BUSHING WHITE CHROME
21	PUMP 20ga CARRIER	55	STOCK SWIVEL BLUED
22	BEARING HOLDER PUMP BLUED	56	SYNTHETIC STOCK 20 GA.
23	AUXILIARY MAGAZINE LATCH SPRING BLUED	57	BUTT PLATE TYPE SYNTHETIC 20GA
24	TRIGGER PLATE PIN 20 GA BLUED	58	PLUG 20 GA
25	TRIGGER ARM	59	RECEIVER LATCH RETAINING BLUED
26	TRIGGER ARM PIN	60	MAGAZINE TUBE 20GA BLUED
27	TRIGGER PLATE PUMP	61	FIRING PIN BLUED
28	TRIGGER GUARD PIN BUSHING SPRING	62	RECEIVER 20 GA -ANODIZED
29	TRIGGER PIN BLUED	63	LOCKING BLOCK SHOE BLUED
30	TRIGGER PIN BLUED	64	LOCKING BLOCK 20GA BLUED
31	EXTRACTOR BLUED	65	MAGAZINE SPRING RETAINING RING 20GA
32	EXTRACTOR PLUNGER BLUED	66	COCKING ROD 20 GA BLUED
33	EXTRACTOR PIN BLUED	67	BOLT SLIDE PUMP 20 GA BLUED
34	EXTRACTOR SPRING	68	FRONT SIGHT ADAPTER

SAR P/A 20GA 3 22"1MC BL YTH" EXPLODED VIEW



SAR P/A 20GA 3 22"1MC BL YTH" PART LIST

NO	PART NAME	NO	PART NAME
1	RECEIVER LATCH RETAINING SPRING	36	EXTRACTOR SPRING
2	STOCK STUD 20GA	37	FRONT SIGHT M3
3	BUTT PLATE SCREW G2002	38	HAND SAFETY SPRING FOLLOWER BLUED
4	FOREND SYNTHETIC 20GA PUMP-ACTION	39	HAND SAFETY SPRING
5	SAFETY ARM	40	HAND SAFETY BLUED
6	SAFETY LEVER	41	HAND SAFETY SPRING RETAINING PIN BLUED
7	HAMMER PIN BLUED PUMP-ACTION	42	MAGAZINE FOLLOWER BLUED
8	HAMMER SPRING PUMP-ACTION	43	MAGAZINE SPRING 20 GA
9	INTERNAL CHOKE 5" -LASER MARKING	44	LATCH PIN RETAINING SPRING
10	INTERNAL CHOKE 3" -LASER MARKING	45	LATCH PIN BLUED
11	CYLINDER RUBBER GUIDE FOREND CAP 20GA	46	HAMMER PUMP-ACTION
12	HAND SAFETY SPRING	47	SEAR
13	INTERNAL CHOKE 1" - LASER MARKING	48	SEAR PIN BLUED
14	CHOKE TUBE KEY BLUED PLATED	49	SEAR ELASTIC PIN
15	BEARING HOLDER SPRING 20GA	50	HAMMER SPRING FOLLOWER BLUED
16	BARREL(56)20GA	51	FIRING PIN ELASTIC STOP
17	STOCK STUD BUSH BLUED 20GA	52	FIRING PIN SPRING
18	CARRIER MAIN SPRING	53	BOLT BLUED 20GA PUMP
19	BREECH BLOCK LATCH INTERNAL PIN	54	TRIGGER BLUED
20	BREECH BLOCK LATCH SPRING FOLLOWER BLUED	55	BARREL EXTENSION ASSY 20GA BLUED
21	BREECH BLOCK LATCH BLUED	56	TRIGGER GUARD PIN BUSHING WHITE CHROME
22	BREECH BLOCK LATCH PIN	57	STOCK SWIVEL BLUED
23	CARRIER 20 GA	58	SYNTHETIC STOCK 20 GA.
24	BEARING HOLDER	59	BUTT PLATE TYPE SYNTHETIC 20GA
25	BEARING HOLDER SPRING	60	PLUG 20 GA
26	TRIGGER PLATE PIN 20 GA BLUED	61	RECEIVER LATCH RETAINING
27	TRIGGER ARM	62	MAGAZINE TUBE 20GA PUMP-ACTION BLUED
28	TRIGGER ARM PIN	63	FIRING PIN BLUED
29	TRIGGER PLATE PUMP-ACTION	64	RECEIVER LASER MARKING
30	TRIGGER GUARD PIN BUSHING SPRING	65	LOCKING BLOCK SHOE BLUED
31	TRIGGER PIN BLUED	66	LOCKING BLOCK 20GA BLUED
32	SEAR SPRING	67	MAGAZINE SPRING RETAINING RING 20GA
33	EXTRACTOR BLUED	68	COCKING ROD 20GA BLUED
34	EXTRACTOR PLUNGER BLUED	69	BOLT SLIDE 20GA BLUED
35	EXTRACTOR PIN BLUED	70	FRONT SIGHT ADAPTER

SAR P/A 20GA 3 22"1MC CAMO YT" PART LIST

NO	PART NAME	NO	PART NAME
1	RECEIVER LATCH RETAINING SPRING	36	EXTRACTOR SPRING
2	STOCK STUD 20GA	37	FRONT SIGHT M3
3	BUTT PLATE SCREW	38	HAND SAFETY SPRING FOLLOWER BLUED
4	SYNTHETIC STOCK 20 GA.	39	HAND SAFETY SPRING
5	SAFETY ARM	40	HAND SAFETY BLUED
6	SAFETY LEVER	41	HAND SAFETY SPRING RETAINING PIN BLUED
7	HAMMER PIN BLUED	42	MAGAZINE FOLLOWER BLUED 20GA
8	HAMMER SPRING PUMP-ACTION	43	MAGAZINE SPRING 20GA
9	INTERNAL CHOKE 5" -LASER MARKING 20GA	44	LATCH PIN RETAINING SPRING
10	INTERNAL CHOKE 3" -LASER MARKING	45	LATCH PIN BLUED
11	CYLINDER RUBBER GUIDE FOREND CAP 20GA	46	HAMMER PUMP-ACTION
12	AUTOMATIC HAND SAFETY SPRING	47	SEAR
13	INTERNAL CHOKE 1" - LASER MARKING	48	SEAR PIN BLUED
14	CHOKE TUBE KEY	49	SEAR ELASTIC PIN
15	BEARING HOLDER SPRING 20GA PUMP-ACTION	50	HAMMER SPRING FOLLOWER BLUED
16	BARREL(66)20GA	51	FIRING PIN ELASTIC STOP
17	STOCK STUD BUSH BLUED 20GA	52	FIRING PIN SPRING
18	CARRIER MAIN SPRING	53	BOLT BLUED 20GA
19	BREECH BLOCK LATCH INTERNAL PIN	54	TRIGGER BLUED
20	BREECH BLOCK LATCH SPRING FOLLOWER BLUED	55	BARREL EXTENSION ASS Y 20GA BLUED
21	BREECH BLOCK LATCH BLUED	56	TRIGGER GUARD PIN BUSHING WHITE CHROME
22	TABREECH BLOCK LATCH PIN	57	STOCK SWIVEL BLUED
23	CARRIER BLUED 20GA	58	SYNTHETIC STOCK 20 GA.
24	BEARING HOLDER	59	BUTT PLATE TYPE SYNTHETIC 20GA
25	BEARING HOLDER SPRING	60	PLUG 20GA
26	TRIGGER PLATE PIN 20GA BLUED	61	RECEIVER LATCH RETAINING
27	TRIGGER ARM	62	MAGAZINE TUBE
28	TRIGGER ARM PIN	63	FIRING PIN BLUED
29	TRIGGER PLATE PUMP-ACTION	64	RECEIVER 20GA
30	TRIGGER GUARD PIN BUSHING SPRING	65	LOCKING BLOCK SHOE BLUED
31	TRIGGER PIN BLUED	66	LOCKING BLOCK 20GA BLUED
32	SEAR SPRING	67	MAGAZINE SPRING RETAINING RING 20GA
33	EXTRACTOR BLUED	68	COCKING ROD 20GA BLUED
34	EXTRACTOR PLUNGER BLUED	69	BOLT SLIDE 20GA BLUED
35	EXTRACTOR PIN BLUED	70	FRONT SIGHT ADAPTER

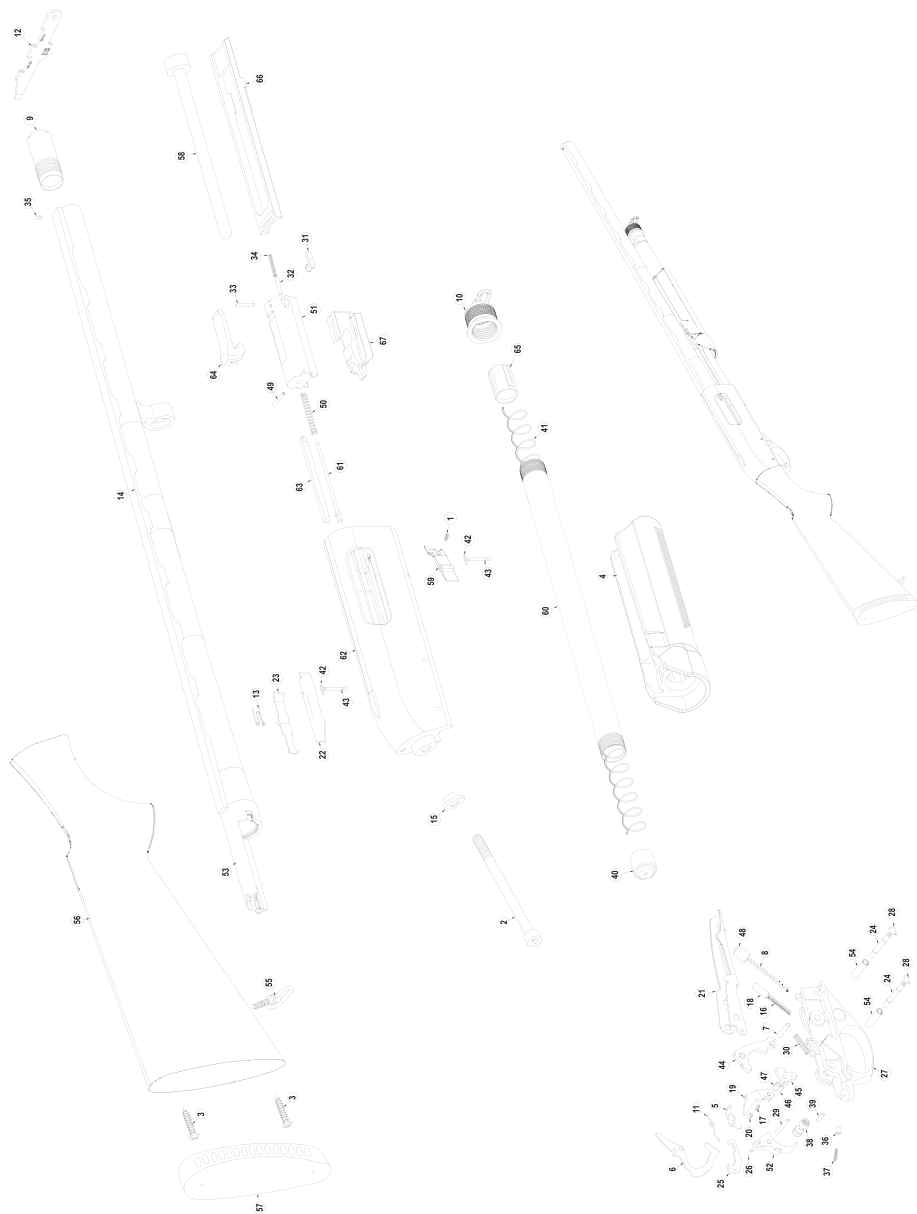
SAR P/A 20GA 3 26"1MC BL" EXPLODED VIEW



SAR P/A 20GA 3 26"1MC BL" PART LIST

NO	PART NAME	NO	PART NAME
1	RECEIVER LATCH RETAINING SPRING	36	HAND SAFETY SPRING FOLLOWER BLUED
2	STOCK STUD 20GA	37	HAND SAFETY SPRING
3	BUTT PLATE SCREW G2002	38	HAND SAFETY BLUED
4	FOREND 20GA PUMP	39	HAND SAFETY SPRING RETAINING PIN BLUED
5	SAFETY ARM	40	MAGAZINE FOLLOWER BLUED
6	SAFETY LEVER	41	MAGAZINE SPRING 20 GA
7	HAMMER PIN BLUED	42	LATCH PIN RETAINING SPRING
8	HAMMER SPRING PUMP	43	LATCH PIN BLUED
9	INTERNAL CHOKE 5" 20GA - LASER MARKING	44	HAMMER PUMP
10	CYLINDER RUBBER GUIDE FOREND CAP 20GA	45	HAMMER BLOCK
11	AUTOMATIC SAFETY SPRING	46	HAMMER BLOCK PIN BLUED
12	CHOKE TUBE KEY BLACK PLATED	47	HAMMER BLOCK ELASTIC PIN
13	BEARING HOLDER SPRING PUMP	48	HAMMER SPRING FOLLOWER BLUED
14	BARREL(66) 20GA I.C.+CONNECTING RING+UPPER STRIP	49	FIRING PIN ELASTIC STOP
15	STOCK STUD BUSH BLUED 20GA	50	FIRING PIN SPRING
16	CARRIER MAIN SPRING	51	BOLT PUMP 20 GA BLUED
17	BREECH BLOCK LATCH INTERNAL PIN	52	TRIGGER BLUED
18	BREECH BLOCK LATCH SPRING FOLLOWER BLUED	53	BARREL EXTENSION ASSY 20GA BLUED
19	BREECH BLOCK LATCH BLUED	54	TRIGGER GUARD PIN BUSHING WHITE CHROME
20	BREECH BLOCK LATCH PIN	55	STOCK SWIVEL BLUED
21	PUMP 20ga CARRIER	56	SYNTHETIC STOCK 20 GA.
22	BEARING HOLDER PUMP BLUED	57	BUTT PLATE TYPE SYNTHETIC 20GA
23	AUXILIARY MAGAZINE LATCH SPRING BLUED	58	PLUG 20 GA
24	TRIGGER PLATE PIN 20 GA BLUED	59	RECEIVER LATCH RETAINING BLUED
25	TRIGGER ARM	60	MAGAZINE TUBE 20GA BLUED
26	TRIGGER ARM PIN	61	FIRING PIN BLUED
27	TRIGGER PLATE PUMP	62	RECEIVER 20 GA - ANODIZED
28	TRIGGER GUARD PIN BUSHING SPRING	63	LOCKING BLOCK SHOE BLUED
29	TRIGGER PIN BLUED	64	LOCKING BLOCK 20GA BLUED
30	TRIGGER PIN BLUED	65	MAGAZINE SPRING RETAINING RING 20GA
31	EXTRACTOR BLUED	66	COCKING ROD 20 GA BLUED
32	EXTRACTOR PLUNGER BLUED	67	BOLT SLIDE PUMP 20 GA BLUED
33	EXTRACTOR PIN BLUED	68	INTERNAL CHOKE 1" 20GA - LASER MARKING
34	EXTRACTOR SPRING	69	INTERNAL CHOKE 3" 20GA - LASER MARKING
35	FRONT SIGHT M3		

SAR P/A 20GA 3 26"1MC CAMO" EXPLODED VIEW



SAR P/A 20GA 3 26"1MC CAMO" PART LIST

NO	PART NAME	PART NAME
1	RECEIVER LATCH RETAINING SPRING	FRONT SIGHT M3
2	STOCK STUD 20GA	HAND SAFETY SPRING FOLLOWER BLUED
3	BUTT PLATE SCREW G2002	HAND SAFETY SPRING
4	FOREND 20GA PUMP CAMOUFLAGE	HAND SAFETY BLUED
5	SAFETY ARM	HAND SAFETY SPRING RETAINING PIN BLUED
6	SAFETY LEVER	MAGAZINE FOLLOWER BLUED
7	HAMMER PIN BLUED	MAGAZINE SPRING 20 GA
8	HAMMER SPRING PUMP	LATCH PIN RETAINING SPRING
9	INTERNAL CHOKE 5* 20GA - LASER MARKING	LATCH PIN BLUED
10	CYLINDER RUBBER GUIDE FOREND CAP 20GA	HAMMER PUMP
11	AUTOMATIC SAFETY SPRING	HAMMER BLOCK
12	CHOKE TUBE KEY BLACK PLATED	HAMMER BLOCK PIN BLUED
13	BEARING HOLDER SPRING PUMP	HAMMER BLOCK ELASTIC PIN
14	BARREL 20GA 66CM I.C. 3" CAMOUFLAGE COATED	HAMMER SPRING FOLLOWER BLUED
15	STOCK STUD BUSH BLUED 20GA	FIRING PIN ELASTIC STOP
16	CARRIER MAIN SPRING	FIRING PIN SPRING
17	BREECH BLOCK LATCH INTERNAL PIN	BOLT PUMP 20 GA BLUED
18	BREECH BLOCK LATCH SPRING FOLLOWER BLUED	TRIGGER BLUED
19	BREECH BLOCK LATCH BLUED	BARREL EXTENSION ASSY 20GA BLUED
20	BREECH BLOCK LATCH PIN	TRIGGER GUARD PIN BUSHING WHITE CHROME
21	PUMP 20GA CARRIER	STOCK SWIVEL BLUED
22	BEARING HOLDER PUMP BLUED	STOCK 20GA SYNTHETIC CAMOUFLAGE
23	AUXILIARY MAGAZINE LATCH SPRING BLUED	BUTT PLATE TYPE SYNTHETIC 20GA
24	TRIGGER PLATE PIN 20 GA BLUED	PLUG 20 GA
25	TRIGGER ARM	RECEIVER LATCH RETAINING BLUED
26	TRIGGER ARM PIN	MAGAZINE TUBE 20GA BLUED
27	TRIGGER PLATE PUMP	FIRING PIN BLUED
28	TRIGGER GUARD PIN BUSHING SPRING	RECEIVER SAR PA 20 GA CAMO LASER MARKING
29	TRIGGER PIN BLUED	LOCKING BLOCK SHOE BLUED
30	TRIGGER PIN BLUED	LOCKING BLOCK 20GA BLUED
31	EXTRACTOR BLUED	MAGAZINE SPRING RETAINING RING 20GA
32	EXTRACTOR PLUNGER BLUED	COCKING ROD 20 GA BLUED
33	EXTRACTOR PIN BLUED	BOLT SLIDE PUMP 20 GA BLUED
34	EXTRACTOR SPRING	

 **WARNING**

Children are attracted to and can operate firearms that can cause severe injuries or death.

Prevent child access by always keeping guns locked away and unloaded when not in use. If you keep a loaded firearm where a child obtains and improperly uses it, you may be fined or sent to prison.

 **ADVERTENCIA**

A los niños les atraen las armas de fuego y los pueden hacer funcionar. Ellos pueden causarse lesiones graves y la muerte.

Evite que los niños tengan acceso a las armas de fuego guardándolas siempre con llave y descargadas cuando no las esté utilizando. Si usted tiene un arma de fuego cargada en un lugar en que un niño tiene acceso a ella y la usa indebidamente. Le pueden dar una multa a enviarlo a la cárcel.

Importer:

US SPORTING GOODS, INC.
1426 King Street
Cocoa, FL 32922
Phone: (321) 639-4842
Fax: 321-639-7006

Manufacturer:

Nargileci Sk. Sarsilmaz Is
Merkezi No:4 34116
Merican - Istanbul / TURKEY
Phone: +90 212 513 35 07 pbx
Fax: +90 212 511 19 99

www.eaacorp.com
eaacorp@eaacorp.com

www.sarsilmaz.com
sarsilmaz@sarsilmaz.com