

---

## CONTENTS

Introduction .....	2
Description .....	2
Safety Rules .....	3
Assembly .....	4
Operation .....	6
Disassembly .....	8
How To Disassemble and Assemble the Choke Tubes .....	8
Choke Tubes Information .....	9
Maintenance and Cleaning .....	10
Technical Drawings and Part Lists .....	11

---

## INTRODUCTION

*This manual provides important information for assembling and using your new gun. Please read the Owner's Manual carefully before handling the gun.*

*Follow safe gun handling procedure at all times. Get instructions from a competent firearms instructor before using the firearm.*

*If you have questions or concerns about the assembly or the operation of your gun, see your dealer, or a qualified gunsmith.*

*Keep this manual, and consult it as needed. If you sell or transfer your gun, make sure the manual stays with the gun.*

*This shotgun, which is produced with the latest possibilities of the contemporary technology, is reliable and practical about its aesthetics, its lightness, its operating system and its expertise in service.*

## DESCRIPTION

This Over&Under shotgun operates with the locking of the barrel to the receiver and firing of the cartridges sequentially. It has automatic ejectors and single selective trigger, which allows you to choose which barrel to fire first and second, and also throws out the empty cartridges of the barrels that are fired.

This shotgun is produced in high standards of European craftsmanship. The instructions in this book will help to assure that it delivers the fine performance for which it was designed.

---

## SAFETY RULES

1. Always treat all firearms as if they were loaded. Don't rely on the safety. Keep the muzzle pointed in a safe direction at all times.
  2. Never cross a fence, climb a tree or jump across a ditch with a loaded gun. Always carry your gun so that you can control the direction of the muzzle if you fall or tumble.
  3. Never load or carry a loaded gun until you are ready to use it. Never leave a loaded gun unattended, or allow a loaded gun in a building or vehicle.
  4. Watch your muzzle, so that the other person doesn't have to. Never point any gun, loaded or unloaded, at anything you do not intend to shoot.
  5. Keep guns and ammunition separately, and in locked storage. Use a trigger lock or cable lock on the gun.
  6. Don't shoot unless you are absolutely sure of your target and what is beyond it. Never shoot at hard, flat surfaces or at water.
  7. Know the range of your gun. Shotgun pellets can travel 500 yards, and shotgun slugs have a range of 1/2 mile. Always be sure of your backstop, and what lies beyond.
  8. Always wear eye and ear protection when shooting. Make sure that persons close to you are similarly protected.
  9. Always be sure the barrel is clear of any obstruction. Each time you pick up the gun, check the barrel for any possible obstruction. Make sure the barrel is clean, and free of dirt or grease before shooting.
  10. Use the right ammunition. Always use clean, dry, original factory-loaded ammunition of the proper type and gauge for your gun. Carry only the proper ammunition for the gun you are shooting. If you are shooting a 12 gauge, do not carry 20 gauge ammunition.
- A gun is as safe as the person using it. Make sure that each person who handles the firearm has read the owner's manual, and understands and observes safe gun handling procedure.

## ASSEMBLY

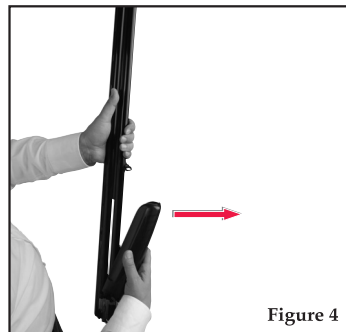
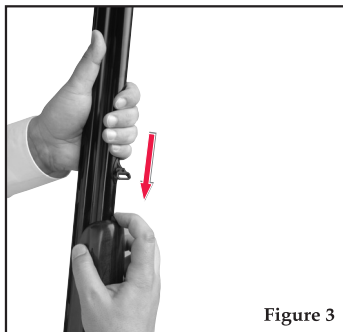
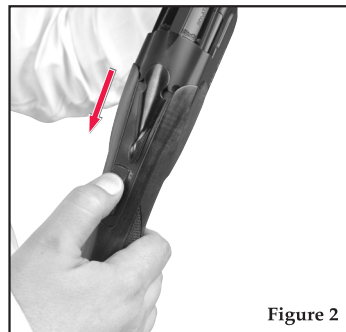
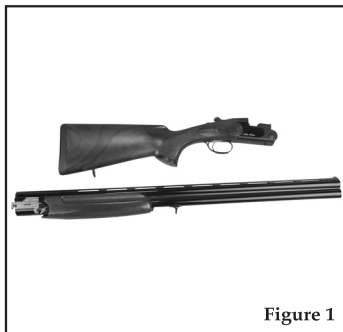
1) The shotgun comes with two separate parts. (Fig. 1)

2) Make sure that the barrels are clean and free of heavy lubrication and the safety is on. Safety on position is when the selector button is pushed to the back. (Fig 2.)

3) Remove the fore-end by pushing to the fore-end button down. (Fig. 3 & Fig. 4)

4) Take the receiver in your hand and push to the top lever to completely right. (Fig. 5)

5) Hold the barrel with your hand and the receiver with your other hand than slide the barrels through to the top of the receiver (Fig. 6)



6) To replace the fore-end on to shotgun, please slide the rear of the fore-end into the barrel at the same angle that you removed. The rear part of the fore-end should fit with the receiver's place. (Fig. 7) When it's fitted to the receiver push the top part of the fore-end and fit it to the barrel. If it does not fit, slap the fore-end easily. (Fig. 8)

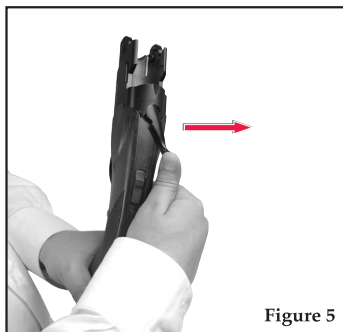


Figure 5



Figure 6

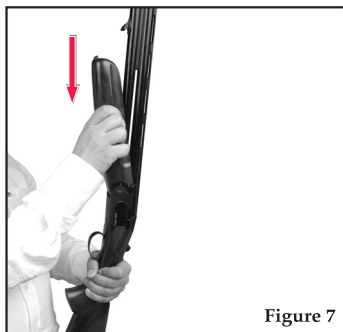


Figure 7

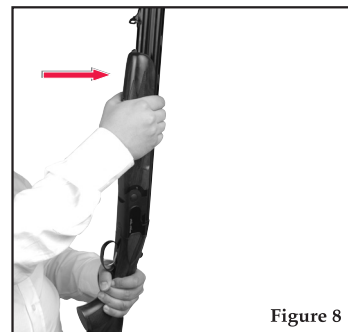


Figure 8

---

## OPERATION

- 1) Make sure that the safety is on and the gun is not ready to fire. Safety on position is when the selector button is pushed to the back. (Fig. 2)
- 2) When the shotgun is assembled, push the top lever to the right and break open the action by rotating the barrels downwards.
- 3) Make sure that the barrels are clean and free of heavy of lubrication.
- 4) Insert the proper cartridge to the chambers of barrels.
- 5) Close the shotgun. Make sure that the top lever has moved to the center position.
- 6) You should close the safety by pushing the selector button to the forward. If you take the selector button to the right and push forward, you will see the one red point on the left that means the down barrel is going to fire first and then the top barrel is going to fire secondly when you pull the trigger. If you take the selector button to the left and push forward, you will see the two red points on the right that means the top barrel is going to fire first and then the down barrel is going to fire secondly when you pull the trigger. (Fig. 9, Fig. 10)



---

7) When you are ready to fire pull the trigger. This shot is fired with the barrel that you choose firstly. After the fire release the trigger then pull the trigger again to fire the second shot of the barrel that you already chose as second. You don't need to operate the selector button to fire the second shot after the first shot because the shotgun automatically takes the selector button ready to fire the second shot.

**WARNING:**

If the shotgun does not fire even you pulled the trigger, put the muzzle to a safe position, do not pull the trigger again and take the gun to the safety on position. Wait for half a minute then break open the action by rotating the barrels downwards and eject the cartridge manually.

8) For unloading the shotgun, push the top lever to the right and break open the action by rotating the barrels downwards and the ejectors will throw out the used cartridges.

---

## DISASSEMBLY

- 1) Make sure that the barrels are empty of cartridges and safety is on.
- 2) Remove the fore-end by pushing to the fore-end button down. (Fig 3)
- 3) Move the top lever right and slide out the barrels from the receiver.

## HOW TO DISASSEMBLE AND ASSEMBLE THE CHOKE TUBES

- 1) Make sure that the barrels are empty of cartridges and safety is on.
- 2) Remove a choke tube by inserting the choke key, and turning it counter clockwise. (Fig. 11)
- 3) After cleaning and lubricating, insert the choke tube to the barrel and tighten the choke with choke key by turning it clockwise.

Consult the choke value chart for suggested values.

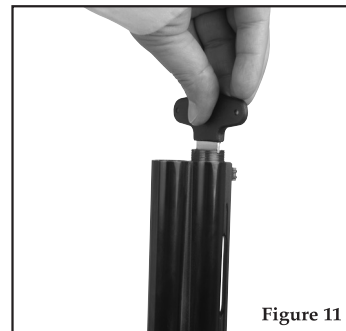







Figure 11



## WHAT'S MULTI CHOKE?

*The purpose of multi choke is to make barrel's tip narrowed down to shoot for and more collectively or to enlarge barrel's tip to shoot more wider groupment for small shots.*

CHOKE TYPE	SYMBOL	GAME	PELLET SIZE	USEFUL SHOOTING DISTANCE
* FULL		Goose, Duck, Wood Grouse. For long range hunting with lead shot and tight groups.	1-2-3	50-56 meters
** IMPROVED MODIFIED		Duck, Pheasant, Wood Grouse, Rabbit	4-5-6	41-44 meters
*** MODIFIED		Partridge, Pheasant, Quail, Pigeons, Woodcock. For long range hunting with steel shot and tight groups.	5-6-7-8	31-41 meters
**** IMPROVED CYLINDER		Quail, Dove and target shooting. For shorter distance more open shooting.	7-8-9-10-11-12	30-35 meters
***** SKEET		For sporting clay and skeet shooting. Short distances more open shooting.	7-8-9-10-11-12	20-30 meters

### WARNING:

Do not use choke values 1, 2 or 3 with slugs, single bullets or single projectiles. Do not use choke value 1 or 2 with steel shot.

### WARNING:

Never shot steel shot with a full or improved modified choke, use only modified, improved cylinder or skeet chokes (marked three, four, five cuts respectively). Do not use chokes full, improved modified, modified and (marked one, two, three cuts) with slugs, single bullets or single projectiles. Never use cartridge with a case longer than the chamber, as this would have serious consequences for both the gun and the shooter. Do not use 3<sup>1/2</sup> cartridges (Super magnum) in this shotgun. Never shot without the choke tube fitted on the barrel.

---

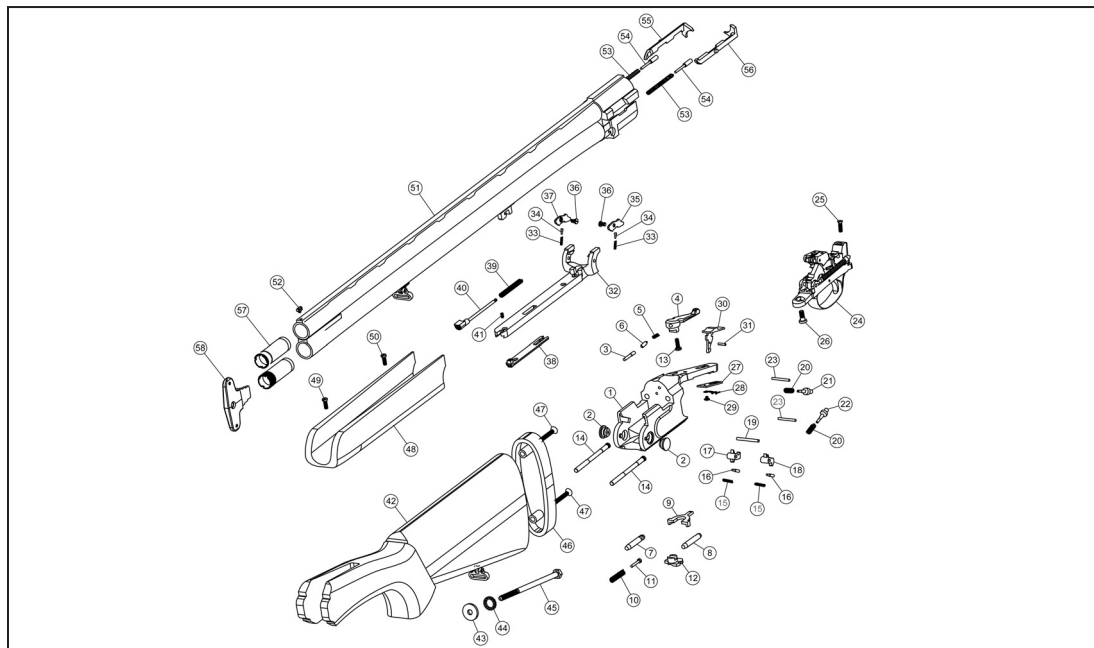
## MAINTENANCE AND CLEANING

- 1) Lubricate the piece of cloth that is over the ramrod and lubricate the inside of barrel with the help of ramrod.
- 2) Dry inside the barrel with a clean piece of cloth. Make sure that there is no scrap left inside the barrel after lubricating and drying.
- 3) If need also lubricate and dry the choke tubes as instructed in this manual how to assemble and disassemble.
- 4) Keep your guns away from wet, dirty, dusty and humid places.

### **WARNING:**

After the cleaning be completely sure that there is nothing left in the barrels.

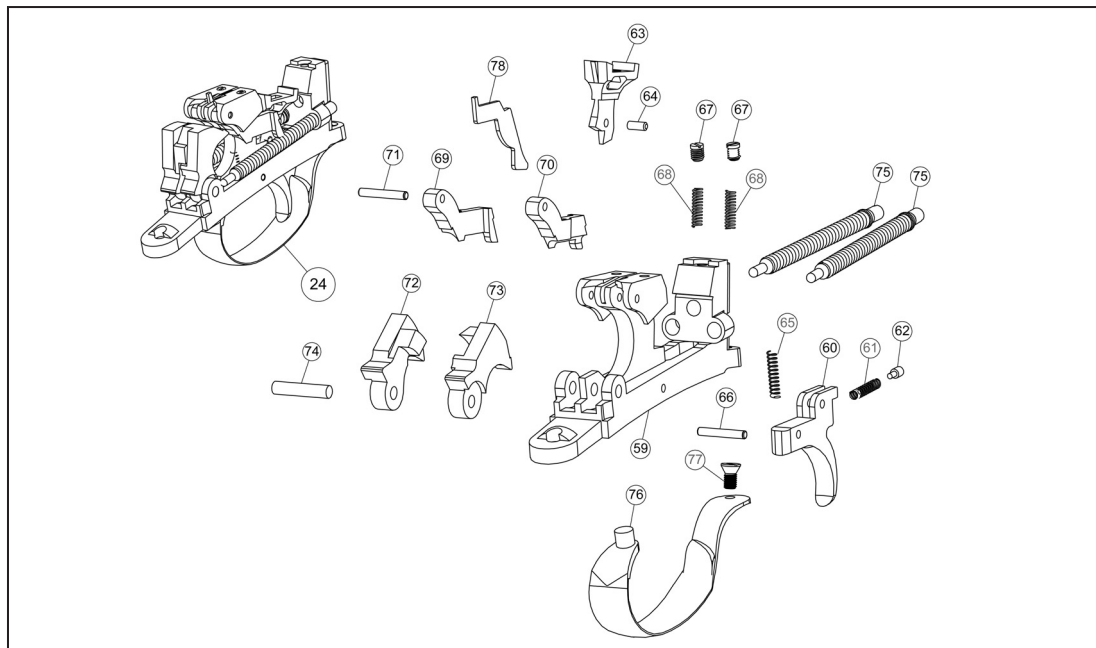
## GENERAL ASSEMBLY



## GENERAL ASSEMBLY - PART LISTING

Stock No	Description	Stock No	Description	Stock No	Description
1	RECEIVER	24	TRIGGER GROUP	47	STOCK PLATE SCREW
2	HINGE PIN	25	TRIGGER GROUP SMALL SCREW	48	FOREND
3	TOP LEVER RELEASE PIN	26	TRIGGER GROUP BIG SCREW	49	FOREND PLATE FRONT SCREW
4	TOP LEVER	27	SAFETY PLATE	50	FOREND PLATE REAR SCREW
5	TOP LEVER SPRING	28	SAFETY SPRING	51	BARREL
6	TOP LEVER SPRING PIN	29	SAFETY SPRING SCREW	52	FRONT SIGHT
7	RIGHT LOCKING LATCH	30	SAFETY	53	EJECTOR SPRING
8	LEFT LOCKING LATCH	31	SAFETY PIN	54	EJECTOR SPRING PIN
9	LOCKING CONNECTING PART	32	FOREND PLATE	55	RIGHT EJECTOR
10	LOCKING SPRING	33	FOREND LEVER SPRING	56	LEFT EJECTOR
11	LOCKING SPRING PIN	34	FOREND LEVER PIN	57	CHOKE TUBE
12	LOCKING OPENING PART	35	LEFT FOREND LEVER	58	CHOKE TUBE WRENCH
13	TOP LEVER SCREW	36	FOREND LEVER SCREW		
14	COCKING ROD	37	RIGHT FOREND LEVER		
15	COCKING LEVER SPRING	38	FOREND LATCH		
16	COCKING LEVER SPRING PIN	39	FOREND LATCH BUTTON SPRING		
17	RIGHT COCKING LEVER	40	FOREND LATCH BUTTON		
18	LEFT COCKING LEVER	41	FOREND LATCH BUTTON SCREW		
19	COCKING LEVER PIN	42	STOCK		
20	FIRING PIN SPRING	43	STOCK WASHER		
21	UPPER FIRING PIN	44	STOCK SPRING WASHER		
22	LOWER FIRING PIN	45	STOCK BOLT SCREW		
23	FIRING PIN CONNECTING PIN	46	STOCK PLATE		

## TRIGGER GROUP



---

## TRIGGER GROUP - PART LISTING

Stock No	Description
59	TRIGGER GROUP PLATE
60	TRIGGER
61	INERTIA BLOCK SPRING
62	INERTIA BLOCK SPRING PIN
63	INERTIA BLOCK
64	INERTIA BLOCK PIN
65	TRIGGER SPRING
66	TRIGGER PIN
67	SEAR SPRING SCREW
68	SEAR SPRING
69	RIGHT SEAR
70	LEFT SEAR
71	SEAR PIN
72	RIGHT HAMMER
73	LEFT HAMMER
74	HAMMER PIN
75	HAMMER SPRING
76	TRIGGER GUARD
77	TRIGGER GUARD SCREW
78	INERTIA BLOCK LATCH



