

READ THIS CAREFULLY BEFORE OPERATING THIS FIREARM

BOND ARMS^{INC.}
DOUBLE-BARREL HANDGUN
DERRINGERS

SAFETY AND INSTRUCTION MANUAL

FACTORY SERVICING & ASSISTANCE:

For help and information or should your Bond Arms handgun require factory service, contact Bond Arms at (817) 573-4445 and describe the problem

or email customerservice@bondarms.com

**Do not send in gun without first calling us for an RMA.*

**ALSO SEE OUR WARRANTY CARD
ON LAST PAGE OF THIS BOOKLET.**



P.O. Box 1296 • Granbury, TX 76048 • (817) 573-4445

WWW.BONDARMS.COM

SAFETY WARNINGS!

The safety warnings in this pamphlet are important. By understanding the dangers inherent in the use of any firearm, and by taking the precautions described herein, you can enjoy safety in the use of your new Bond Arms Firearm. Failure to heed any of these warnings may result in serious injury to you or others, as well as severe damage to the firearm or other property. Read and understand all the following precautions before removing this firearm from its package. This firearm is a precision instrument designed to function reliably with proper care and knowledgeable use. If you do not have a full understanding of the power and function of firearms, we recommend that you seek proper training. The Bond Arms Firearm incorporates safety features; however, **SAFE GUN HANDLING IS YOUR PERSONAL RESPONSIBILITY.**

This product Contains Lead From Test Firing. Wash hands after handling pistol.

NOTICE OF LIABILITY

BOND ARMS INC shall not be responsible, either in whole or part, for injury, death, or damage to property resulting from intentional or accidental discharge of this firearm, or from its function when used for purposes or subjected to treatment for which it was not designed. BOND ARMS INC will not honor claims involving our firearms which result from careless or improper handling, unauthorized adjustment, after market modifications, **remanufactured or reloaded ammo**, corrosion, neglect, or the use of wrong ammunition, bullets, or any combination of the above. At BOND ARMS' discretion claims made by a second or subsequent owner may or may not be honored.

SAFETY INSTRUCTIONS

1. Always keep safety on until ready to fire.
2. Always wear eye and ear protection when firing any gun.
3. BEFORE handling any firearm, understand its operation.
4. Always point your firearm in a safe direction.
NEVER point a firearm at another person or yourself.
5. Always handle your firearm as though it were LOADED.
6. Place your finger on the trigger ONLY when you are ready to fire.
7. Always be certain that your target and the surrounding area are safe before firing.
8. Always check to make sure the firearm is UNLOADED before passing it to or receiving it from another, and before storing it.
9. Do not make any modifications to the firearm.
10. Never use firearms while under the influence of drugs or alcohol.
11. NEVER leave a loaded firearm unattended.
12. Discharging firearms in poorly ventilated areas, cleaning firearms, or handling ammunition may result in exposure to lead and other substances known to cause birth defects, reproductive harm and other serious physical injury. Have adequate ventilation at all times. Wash hands thoroughly after exposure.
13. DO NOT rely on the safety to prevent accidental discharge. The safety may not prevent an accidental discharge due to dropping, jarring, or bumping a gun.

NOTE: If your pistol is accidentally dropped and the impact was on the hammer, internal damage could have occurred. Please contact BOND ARMS at (817) 573-4445 for return or service instructions.

YOUTH HANDGUN SAFETY ACT

1. The misuse of handguns is a leading contributor to juvenile violence and fatalities.
2. Safely storing and securing firearms away from children will help prevent the possession of handguns by juveniles, stop accidents, and save lives.
3. Federal Law prohibits, except in certain limited circumstances, anyone under 18 years of age from knowingly possessing a handgun, or any person from selling, delivering, or otherwise transferring a handgun to a person under 18.
4. A knowing violation of the prohibition against selling, delivering, or otherwise transferring a handgun to a person under the age of 18 is, under certain circumstances, punishable by up to 10 years in prison.

FIRING SAFETY:

1. Always keep safety on until ready to fire.
2. Always wear eye and ear protection when firing any gun.
3. When loading, unloading, or shooting do not put your hand or other body part in front of the barrel.
4. When firing, **do not place your fingers along the side of the barrel** or in front of the barrel.
5. Before firing, make sure that your firearm is in good working order and that the barrel is clear of dirt and obstructions.
6. If the firearm fails to fire a live round; engage safety, point in a safe direction, wait 30 seconds and then carefully unload it. **Now inspect the barrel for obstructions from the breech end.** If the barrel bore is clear, reload gun, disengage the safety. Completing these steps, you can now fire the gun.
7. Never cross obstacles such as fences or streams with a loaded firearm.
8. Never run with a loaded gun.
9. Never shoot at a hard surface or hard, flat surface or over a liquid surface, such as water to avoid a ricochet and possible serious personal injury to yourself or a bystander.

AMMUNITION:

1. Always use clean, dry, original factory-made ammunition of the proper type and caliber for your gun.
2. **Never use non-standard or reloaded ammunition.** Bond Arms, Inc. cannot be held responsible when faulty ammunition is used.
3. Your firearm has been designed for ammunition of a specific caliber. The proper caliber and cartridge type is indicated on the side of the barrel. Do not use any other ammunition than that specified on the barrel of your firearm. Do not alter the barrel, chamber, or caliber. **Do not use reloaded ammo.**
4. For derringers chambered in .45 Colt or .45 Colt/.410, only use loads suitable for Colt SAA revolvers. Do not chamber or shoot 454 Casull, +P rounds, or Corbon. Damage to the derringer and serious injury to the shooter would result.
5. For derringers chambered in .45Colt/.410, Do Not use High Velocity .45 Colt.
6. Do Not use Foreign Brand Ammo.
7. Do Not use Herter's Brand 357 Mag ammo.
8. If you experience misfires or accuracy problems, try different brands of the same caliber ammo. Ammunition varies among manufacturers.

TRANSPORT AND STORAGE

1. ALWAYS keep safety in “ON” position until ready to fire.
2. ALWAYS transport your firearm in the unloaded condition. ALWAYS carefully unload the gun before entering a motor vehicle or a dwelling. NEVER load in the house or in your vehicle.
3. Obey all laws relating to the transportation of firearms.
4. Always store your unloaded firearm and ammunition separately and in places inaccessible to unauthorized persons.
5. Do not store your firearm in an air-tight container.
6. If your firearm is to be stored for an extended period, apply a thin layer of oil on the outside of the pistol. Do not spray oil down inside the gun because some oils will dissolve the factory applied hammer grease.
7. **NOTE:** Rough Series handguns in High moisture areas may be subject to flash rust. Prevent this by applying an aerosol oil such as WD-40® or REM® Oil every month to protect the outside bead blasted areas of the handgun.

OPERATING INSTRUCTIONS

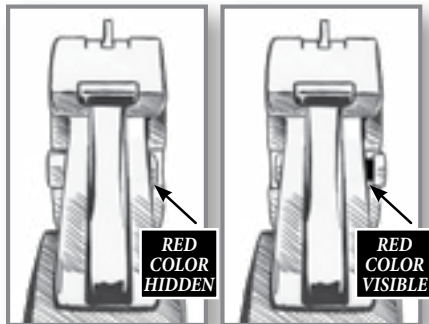
USE OF CROSSBOLT SAFETY:

Safety Warning: Always keep fingers away from the muzzle and the gun pointed in a safe direction.

KEEP YOUR FINGER OFF THE TRIGGER.

To engage the safety to the “ON SAFE” position:

1. Grip the firearm with the muzzle pointing away from you.
2. Slide crossbolt safety to the LEFT side of the gun, in front of the rebounding hammer.
3. Crossbolt safety will now block the hammer from reaching the firing pins. This does not prevent the hammer from being cocked or released by a pull of the trigger.



*Safety in
“ON SAFE” Position*

*Safety in
“ON FIRE” Position*

OPERATING INSTRUCTIONS (cont.)

NOTE: Do Not intentionally release the hammer under full tension onto the crossbolt safety, or when there is not a barrel installed and locked into the frame by an engaged lock lever (often referred to as the barrel being “In-Battery”). Dry firing onto an engaged crossbolt safety or without a barrel In-Battery will damage the integrity of the firearm over time.

To disengage the safety to the “ON FIRE” position:

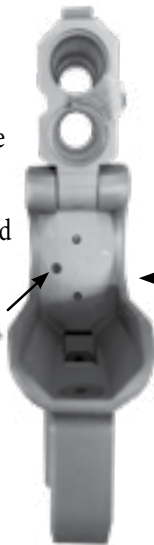
1. Grip the firearm with the muzzle pointing away from you.
2. Slide crossbolt safety to the RIGHT side of the gun.
3. Pistol is now ready to fire.

APPROVED SAFETY DEVICE

KEY ENTRY INTERNAL SAFETY LOCKING DEVICE (SLD)

As defined in the
ATF Federal Firearms
Regulations Reference Guide
Section 192(a)(34).

This Acts as an Effective Child
Safety Lock and Gun Lock.



TO LOCK:

1. Push cross-bolt safety to the LEFT to the "SAFETY ON" position.
2. Insert the key provided (.05" hex key / allen wrench) in the Safety Locking Device (SLD) and turn clockwise until the SLD is jammed into the cross-bolt safety. Then push the cross-bolt safety to make sure it does not move. The Safety is now locked in the "SAFETY ON" position.

TO UNLOCK:

Unscrew to release the safety. When unlocking the child safety screw the screw must not protrude past the breech face or the barrel will damage the screw and prevent proper fit.

LOADING:

Safety Warning: Hammer must be in the UNCOCKED position. Engage the manual crossbolt safety by sliding the safety to the “ON SAFE” position, in front of the rebounding hammer. **KEEP YOUR FINGER OFF THE TRIGGER while loading the firearm.**

1. Ensure that the hammer is in the “UNCOCKED” position.
2. Push locking lever handle down and swing barrel away from frame.
3. Insert the proper cartridge for the barrel into each barrel.

Safety Warning: Use only factory loaded ammunition.

NOTE: For barrels chambered in .45LC/.45 Colt, Bond Arms, Inc. uses a slightly smaller diameter chamber. If the ammo you are using has difficulty chambering, first clean the chamber and/or try a different brand of ammo.

4. Carefully close the barrel by swinging the barrel back to the frame and carefully close the gun into the locked position while pointing the end of the barrel away from you and others in a safe direction.
5. Ensure that the lock lever has engaged and that the barrel is secure.
6. The locking lever handle should be parallel to the barrel.

FIRING - SAFETY WARNINGS:

If your gun is loaded with live ammunition and the hammer is in full cock but pulling the trigger does not release the hammer, engage the safety to the “ON SAFE” position. Take a 1/8” Allen wrench and remove the barrel from the frame. Once the barrel is removed from the frame, put the safety in the “ON FIRE” position. Then cock and release while holding the hammer back with your thumb and gently allow the hammer to go forward as you pull the trigger. Do not attempt to fire the pistol. Contact BOND ARMS INC at (817) 573-4445, M-F for trouble shooting advice.

ALWAYS engage the crossbolt safety in the “ON SAFE” position until you are ready to fire.

ALWAYS keep fingers away from the muzzle. ALWAYS point gun in a safe direction.

ALWAYS wear hearing and eye protection.

DO NOT cock hammer until ready to fire. KEEP FINGER OFF trigger until ready to fire.

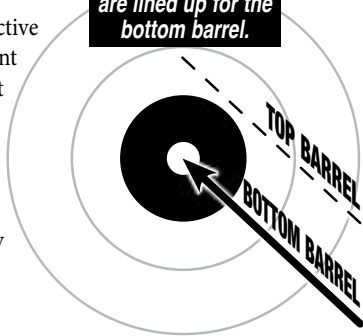
FIRING INSTRUCTIONS CONTINUED ON NEXT PAGE.

FIRING (cont.):

1. Pull back hammer to the full cock position and push the crossbolt safety to “ON FIRE” position.
2. Aim firearm at the target. Align the two sights and squeeze the trigger to fire.
3. Placing the index finger of the non-shooting hand on the front of the trigger guard (as in the Weaver hold) is NOT recommended. This type of hold may force the gun to impact the knuckle on the middle finger of the shooting hand if shooting heavy recoiling calibers.
4. The Bond Arms Derringer is a short range handgun. Effective range is from 1 to 21 feet. Because the barrels are at different distances from the top of the shooting hand, the bullet fired from the top barrel will be different from the bullet fired from the bottom barrel.

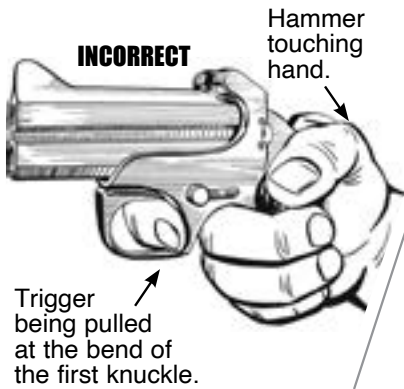
NOTE for .45LC/.410 users: Due to the short rifling engagement in this chambering, the .45LC bullet may or may not be stabilized depending on the ammunition used.

The sites of the gun are lined up for the bottom barrel.



FIRING INSTRUCTIONS CONTINUED ON NEXT PAGE.

FIRING (cont.):



Note:
Trigger pull has downward and back motion, not straight back.

FIRING INSTRUCTIONS CONTINUED ON NEXT PAGE.

FIRING (cont.):

Trigger Pull:

The trigger pull is approximately 7 pounds, which is within the acceptable range for a pistol of this type. Derringers, being small compact pistols, require the user to operate the gun in a specific manner.

1. With the hammer in the full cock position, grasp the grip with your shooting hand making sure that your hand is NOT touching the cocked hammer. Any amount of pressure applied to the cocked hammer by your hand will increase the trigger pull substantially.
2. Make contact with the trigger using the pad of your trigger finger. Avoid pulling the trigger with the bend of your first knuckle.
3. Pull the trigger downward and back.
4. Trigger pull gets better with usage.

UNLOADING:

Safety Warning: Always point the firearm in a safe direction.

1. Ensure that the crossbolt safety is in the “ON SAFE” position.
2. Check that the hammer is in the uncocked position. If necessary, hold the hammer with your thumb and release the trigger. Gently let the hammer slide to the uncocked position while the safety is on.
3. Push lock lever handle down and swing barrel away from frame.
4. Remove spent cartridge cases from the barrel breech. Slide extractor away from the barrel to eject cases if necessary.
(Barrels for rimless rounds, such as 9mm, 380acp, 10mm, 40S&W and 45acp **do not have an extractor**. There is a clearance cut in the breech of the barrel to allow the shooter to extract the rounds with a fingernail or rim of a fired casing.)
5. Close barrel by swinging barrel back to frame and ensure that the lock lever has engaged.

INTERCHANGEABLE BARRELS:

Safety Warning: Ensure that your gun is UNLOADED.

NOTE: With the barrel locked into the frame, notice the position of the lock lever handle. When the new barrel is locked in the frame this lever handle should be in approximately the same position. Locking lever handle should be approximately parallel to the barrel.

*Locking Lever -
Incorrect*



*Locking Lever -
Correct*



UNLOADING (cont.):

REMOVING AND INSTALLING BARRELS:

1. Push lock lever handle down and swing barrel away from frame.
2. Loosen and remove barrel hinge screw with 1/8" Allen wrench (not provided.) Barrel can now be removed from the gun's frame.
3. Align the hinge hole of the barrel to be installed with the hinge hole in the frame. Slip barrel hinge screw through the frame and barrel hinge hole.
4. Use 1/8" Allen wrench and tighten the screw until it bottoms out and cannot be turned. **DO NOT OVERTIGHTEN THIS SCREW. DAMAGE TO THE SCREW COULD OCCUR.**
5. Close the barrel by swinging the barrel back to the frame. Check lock lever handle position as explained in NOTE above in this section.

UNLOADING:

SAFETY CHECK FOR NEW BARREL:

6. With barrel locked into the frame and with the gun UNLOADED, cock and release while holding the hammer back with your thumb and gently allow the hammer to go forward as you pull the trigger. KEEP THE GUN POINTED IN A SAFE DIRECTION. If the hammer does not go forward, remove the barrel from the frame and call Bond Arms at (817) 573-4445 before using.

CHANGING GRIPS:

BOND ARMS INC has a wide variety of custom grips available for your pistol. When changing the grips, you must first make sure that the pistol is unloaded with the safety in the “ON” position and pointed in a safe direction. Pull the hammer to the full cock position. Use the proper screwdriver to remove the grip screw of the existing grips. Install the new grips. Cock and release while holding the hammer back with your thumb and gently allow the hammer to go forward as you pull the trigger. Some fitting of the new grips may be required (do not modify the frame or other parts of the firearm).

UNLOADING (cont.):

MAINTENANCE AND CLEANING:

Safety Warning: Ensure that your gun is not loaded.

After each shooting, clean the barrel bore from the rear (breech end) with a bore cleaning solvent and cotton patches or a brass bore brush. Never clean the barrel from the muzzle and do not use steel brushes. Use a suitable cleaning rod. When bore is clean, push a lightly oiled patch through the bore. After each use, wipe all external metal surfaces with a lightly oiled cloth.

NOTE: Keep the hammer area inside of the frame free of dirt and other foreign matter. Failure to do so may render the rebounding hammer inoperative. **DO NOT** spray oil down inside the gun because some oils will dissolve the factory applied hammer grease resulting in an increase in trigger pull.

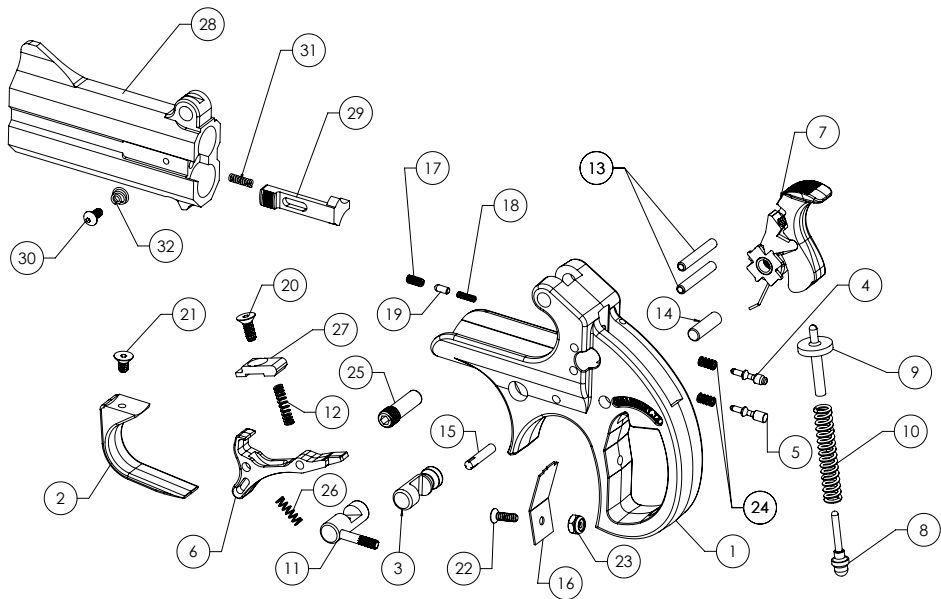
Do not disassemble the flipper from the locking lever. Improper reassembly of the flipper to the locking lever could disable the rebounding hammer feature and make the gun unsafe.

SERVICING:

Periodically check your firearm for dirt and other foreign matter. Check for grit in the hammer action, barrel locking mechanism, cartridge extractor, and crossbolt safety.

ITEM NO.	QTY.	TITLE
1	1	FRAME
2	1	TRIGGER GUARD
3	1	SAFETY
4	1	TOP FIRING PIN
5	1	BOTTOM FIRING PIN
6	1	TRIGGER
7	1	HAMMER ASSEMBLY
8	1	BOTTOM SRPING GUIDE
9	1	TOP SPRING GUIDE
10	1	HAMMER SPRING
11	1	LOCK LEVER
12	1	LOCK LEVER SPRING
13	2	FIRING RETAINING PIN
14	1	HAMMER PIN
15	1	TRIGGER PIN
16	1	SELECTOR FLAT SPRING

ITEM NO.	QTY.	TITLE
17	1	CHILD SAFETY SCREW
18	1	SAFETY SPRING
19	1	SAFETY DETENT
20	1	LOCK LEVER SCREW
21	1	TRIGGER GUARD SCREW
22	1	SELECTOR SCREW
23	1	SELECTOR NUT
24	2	FIRING PIN SPRING
25	1	BARREL HINGE SCREW
26	1	TRIGGER SPRING
27	1	LOCK LEVER FLIPPER
28	1	BARREL
29	1	EXTRACTOR
30	1	EXTRACTOR SCREW
31	1	EXTRACTOR SPRING
32	1	EXTRACTOR CONICAL SPRING



QUESTIONS:

Which chamber fires first?

The hammer alternates between the top and bottom firing pins each time the hammer is cocked. There is no manually operated switch on the pistol which allows you to select the top or the bottom chamber to fire.

But you can pre-select the chamber you wish to fire by doing the following:

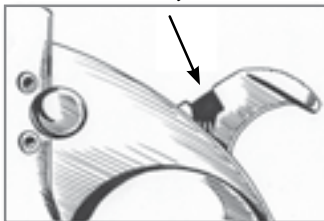
When the gun is unloaded with the safety in the “ON” position, cock the hammer back and you will see a separate piece of metal and a spring on the left side of the Hammer when the gun is held in a firing position. This piece of metal is the hammer head and each time you cock the hammer the hammer head will raise one time and then drop the next. Note the position of the hammer head and if it is in the lower position then the bottom barrel will fire next. If the hammer head stays in the top position then the top barrel will fire next. After cocking and using your thumb to release the hammer several times you will see the movement of the hammer head.

Most of the competitive shooters that use the Bond derringer set the pistol to shoot the bottom chamber first. By selecting the bottom chamber first, the pistol recoils straight back with practically no muzzle flip allowing a faster recovery time for the second shot.

TOP barrel will fire when like this.



BOTTOM barrel will fire when like this.



QUESTIONS (cont.):

Can I shoot a .45ACP in a .45Colt/.410 barrel?

NO. The .45ACP is a completely different cartridge than the .45 Colt. The .45ACP is rimless and would fall through the extractor on this barrel. Bond Arms does make a .45ACP barrel for your Bond derringer.

Is the .45Colt the same as the .45 Long Colt?

YES. The .45 Colt is exactly the same round as the .45 Long Colt. The .45 Long Colt name was required in the late 1800's to differentiate between the .45 Colt and the shorter .45 Schofield. With the passing of the .45 Schofield as a popular round, the name .45 Colt is now the more accepted name for this cartridge.

Does Bond Arms build a barrel that shoots two different CALIBERS, such as .22lr and .357 Mag or .45ACP and .22Mag? NO.

Does Bond Arms build a barrel that shoots different CARTRIDGES in the same chamber?
Yes.

- The .45Colt/.410 chamber will shoot either a .45Colt, .410 Shot shell or a .45 Schofield.
- The .357 Magnum will also shoot the .38 Special, .38 Long Colt, .38 Short Colt and the .357 Magnum CCI Shot shell.
- The .32 H&R Magnum will also shoot .32 S&W Long and .32 Colt New Police.
- The .44 Special will also shoot .44 Russian.

QUESTIONS (cont.):

Will any barrel fit on the different versions of the Bond derringer?

All Bond Arms derringer barrels are interchangeable, except for California and Stinger models. California and Stinger models have their own sets of interchangeable barrels respectively.

What do I do if hammer is cocked, pistol is loaded, but no amount of pulling the trigger will release the hammer?

(Remember that trigger pull has a downward and back motion instead of straight back)

Make sure your pistol is POINTED IN A SAFE DIRECTION. If your gun is loaded with live ammunition and the hammer is in full cock but pulling the trigger does not release the hammer, engage the safety to the “ON SAFE” position. Take a 1/8” Allen wrench and remove the barrel from the frame. Once the barrel is removed from the frame, put the safety in the “ON FIRE” position. Then cock and release while holding the hammer back with your thumb and gently allow the hammer to go forward as you pull the trigger. Do not attempt to fire the pistol. Contact BOND ARMS INC at (817) 573-4445, M-F for trouble shooting advice.

QUESTIONS (cont.):

What is the rebounding hammer?

Think of the rebounding hammer as an automatic half cock. The hammer automatically rebounds to a blocked position off of the firing pins. This allows for safer reloading compared to other derringers. The rebounding hammer is an exclusive patented feature for the Bond derringers. The crossbolt safety should be able to move between positions in front of the rebounding hammer. Contact BOND ARMS INC at (817) 573-4445, M-F for trouble shooting advice.

***Rebounding
Hammer
NORMAL
Half-Cock
Position***



***Rebounding
Hammer
FIRING
Position***

Is it okay to dry fire on the manual crossbolt safety in the “ON SAFE” position?

NO. The crossbolt safety should be used as an emergency device to keep the gun from firing unintentionally. It can be harmful to the gun to repeatedly snap the hammer down on the crossbolt safety.

Is it okay to dry fire the pistol with the manual safety in the “ON FIRE” position?

NO. It is okay to dry fire the pistol with fired (spent) casings. Dry firing on either the .22 Mag or .22 Long Rifle will damage the chamber. DO NOT DRY FIRE on these calibers. Snap Caps are not recommended.

Is it okay to carry the Bond Derringer cocked and locked as is sometimes done with the 1911 style semi-automatic pistol?

NO. This is very unsafe.

WARRANTY:

YOUR PURCHASE RECORD **RECORD YOUR SERIAL NUMBER HERE AND KEEP THIS BOOKLET** **WITH YOUR PISTOL CASE FOR YOUR CONVENIENCE.**

Name of Owner _____

Address _____

City _____ State _____ Zip _____

Contact Phone No. _____

Model _____ Caliber _____

Serial No. _____

Where Purchased _____

Date of Purchase _____

WARRANTY:

IMPORTANT! WARRANTY INFORMATION!
MUST BE FILLED OUT WITHIN 30 DAYS OF PURCHASE!!

Purchaser or Product Owner:

REQUIRED Name: _____

REQUIRED Phone: _____

REQUIRED Email: _____

REQUIRED Address: _____

Your Gun Information

REQUIRED Serial Number: _____

REQUIRED Gun Model: _____

Store or Dealer where Purchased:

Name: _____

City & State: _____

Phone: _____

Comments or Testimonials:

How did you hear about our product:

- | | |
|-------------------------------------|--|
| <input type="radio"/> Word of Mouth | <input type="radio"/> In Store Display |
| <input type="radio"/> Radio Ad | <input type="radio"/> Magazine Ad |
| <input type="radio"/> Gun Show | <input type="radio"/> Website |

(Check all that apply)

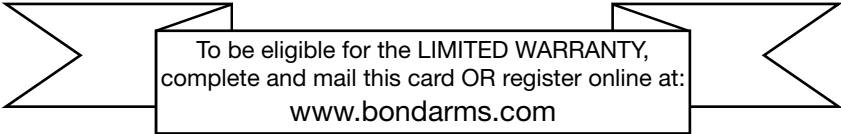
- American Handgunner
- American Rifleman (NRA)
- America's 1st Freedom (NRA)
- Bass Pro Outdoor World
- Blue Press
- Cabela's Outfit Journal
- Cowboy Chronicle (SASS)
- Farm & Ranch Connection
- Guns
- Guns & Ammo
- Gun Digest
- Guns of Old West
- Handguns
- Nations Best Sports Fish & Hunt
- Outdoors
- Shoot! Magazine
- Shooter's Bible
- Shooting Sports (NRA)
- Shooting Times
- TV
- Other

**Detach this page,
place in an envelope and mail to:**

BOND ARMS, INC.

P.O. Box 1296

Granbury, Texas 76048



To be eligible for the LIMITED WARRANTY,
complete and mail this card OR register online at:

www.bondarms.com